

FY 26-27 Capital Bill Request Building and General Services

*Vermont Department of Buildings and
General Services*

Wanda L. Minoli, Commissioner
Joe Aja, Director
*Design & Construction
February 2025*



Section 3: Agency of Human Services Appropriated to Buildings & General Services

Statewide: Planning, Design, and Construction for HVAC Upgrades at Correctional Facilities

- Add Air Conditioning (AC) to:
 - Southern State Correctional Facility
 - Northern State Correctional Facility
 - Northeast Regional Correctional Facility
 - Caledonia Community Work Camp
- Northwest State Correctional Facility >\$16,000,000
- Design is complete for temporary AC and underway for permanent AC
- No bids received for a construction manager

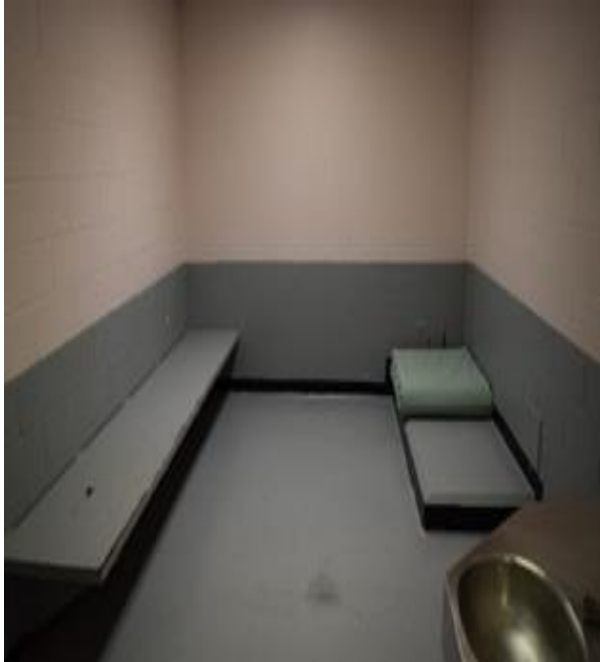
Cost Allocations <i>(in thousands)</i>	Approved Through	Current Year	Budget Year	Budget Year	Future Requirements			Total
	FY '24	FY '25	FY '26	FY '27	FY '28	FY '29	FY '30 – FY '35	
Bond	800	5,150	5,000	1,000	16,609			28,559
Cash								
Total	800	5,150	5,000	1,000	16,609			28,559
Funded Balance		4,761						4,761



Statewide: ADA Compliance at Correctional Facilities

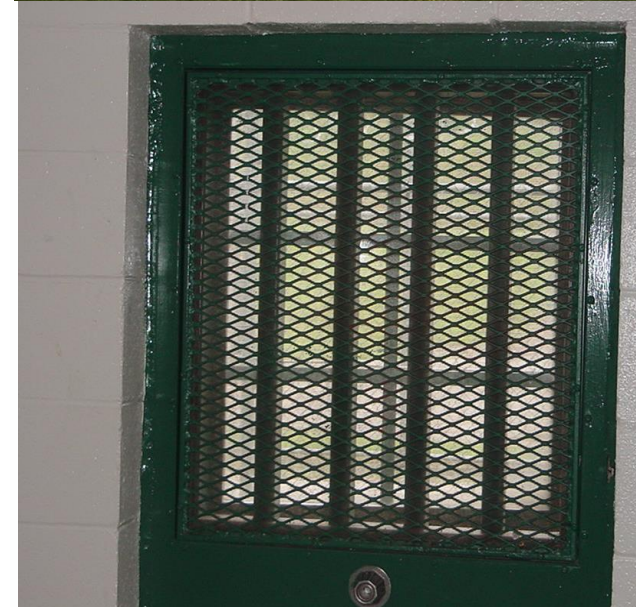
- Department of Justice (DOJ) Settlement to comply with the Americans Disabilities Act (ADA)
- Three facilities:
 - Southern State Correctional Facility – Completed
 - Northern State Correctional Facility – Contract pending
 - Chittenden Regional Correctional Facility – Contract pending
 - All work must be completed by October 27, 2025, in accordance with the DOJ amended Agreement
- Oversight by an independent architect

Cost Allocations <i>(in thousands)</i>	Approved Through	Current Year	Budget Year	Budget Year	Future Requirements			Total
	FY '24	FY '25	FY '26	FY '27	FY '28	FY '29	FY '30 – FY '35	
Bond	1,200	822	2,000					4,022
Cash								
Total	1,200	822	2,000					4,022
Funded Balance	368	822						1,190



Statewide: Correctional Facility Safety and Security Upgrades

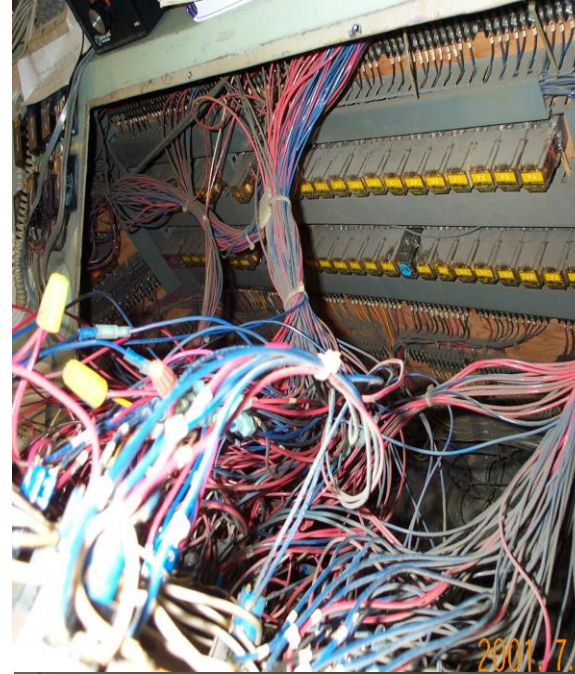
- Structural safety and security needs due to infrastructure failures or operational changes at all seven facilities
- Examples:
 - Security camera system replacement and additions
 - Secure fencing changes and repairs
 - Suicide prevention efforts
 - Compliance with Prison Rape Elimination Act (PREA)
 - Replacing of ventilation grills, bunks, stools and tables



Cost Allocations <i>(in thousands)</i>	Approved Through	Current Year	Budget Year	Budget Year	Future Requirements			Total
	FY '24	FY '25	FY '26	FY '27	FY '28	FY '29	FY '30 – FY '35	
Bond			225	200				425
Cash								
Total			225	200				425
Funded Balance								

Rutland: Marble Valley Regional Correctional Facility (MVRCF) Door Control System Replacements

- Replacement of existing door control system to current industry-standard technology
- Match system previously upgraded at NSCF and SSCF
 - Touchscreen controls for doors, lights and water
 - Camera system upgrade
 - Fence perimeter intrusion defection system



Cost Allocations (in thousands)	Approved Through	Current Year	Budget Year	Budget Year	Future Requirements			Total
	FY '24	FY '25	FY '26	FY '27	FY '28	FY '29	FY '30 – FY '35	
Bond				500				500
Cash								
Total				500				500
Funded Balance								

St. Johnsbury: Northeast Correctional Complex

Northeast State Correctional Facility (NESCF) and the Caledonia Community Work Camp (CCWC) – Door Control Replacement

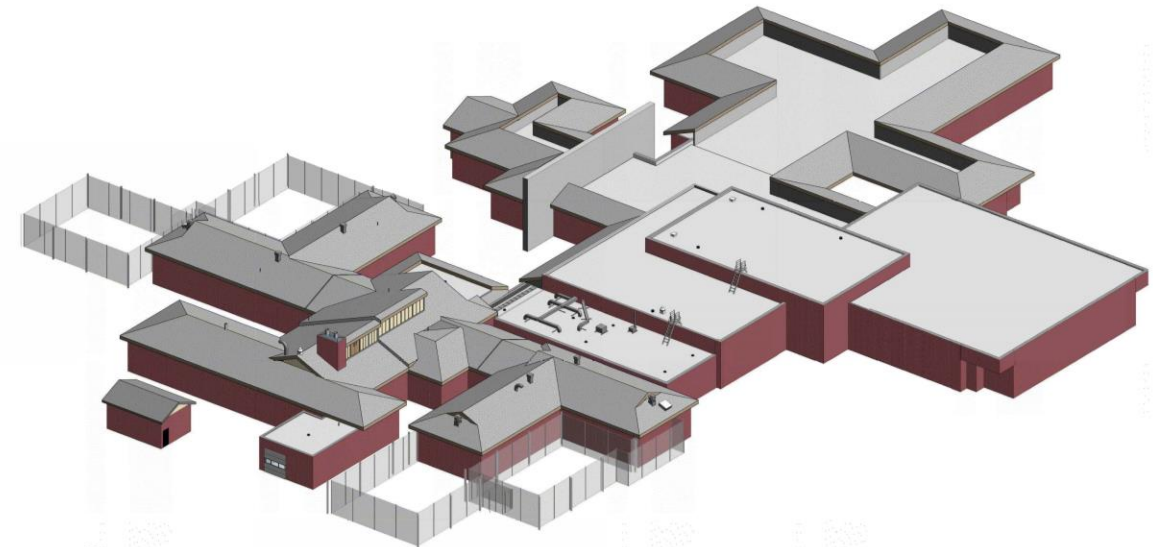
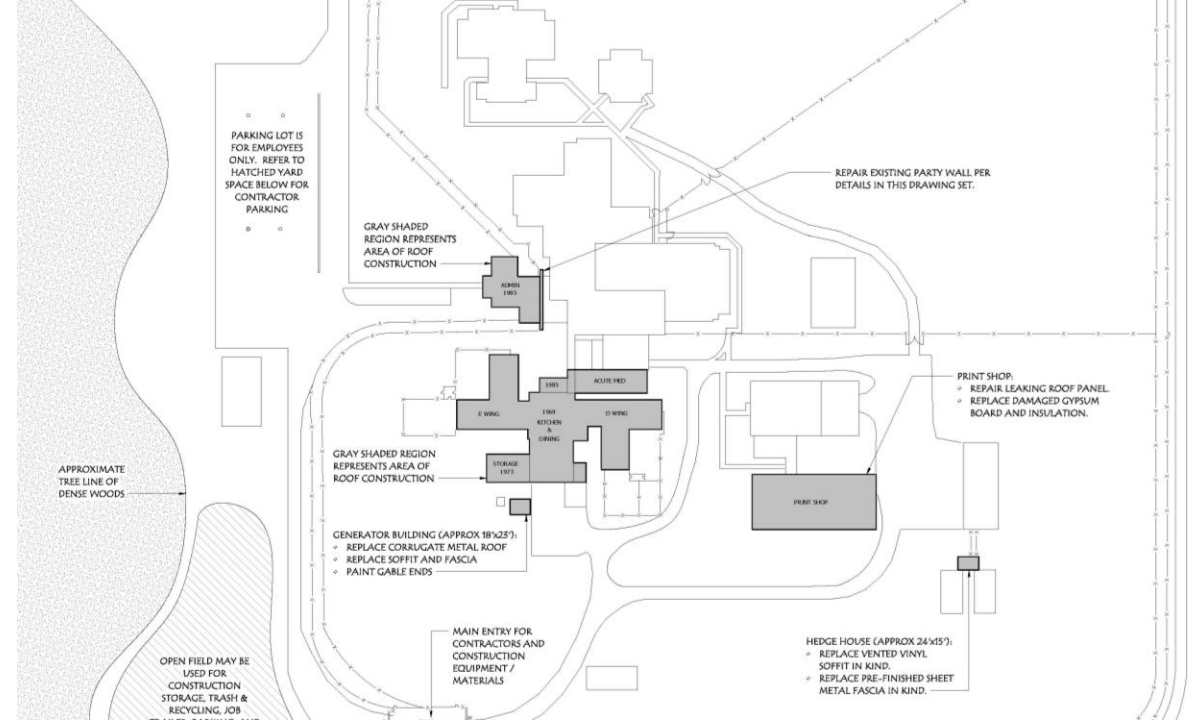
- Replacement of existing door control system to current industry-standard technology
- Match system previously upgraded at NSCF and SSCF
 - Touchscreen controls for doors, lights and water
 - Camera system upgrade
 - Fence perimeter intrusion defection system
- Temporary relocation of incarcerated individuals while the construction work is underway in each living unit
- Complete deferred maintenance during this time

Cost Allocations <i>(in thousands)</i>	Approved Through	Current Year	Budget Year	Budget Year	Future Requirements			Total
	FY '24	FY '25	FY '26	FY '27	FY '28	FY '29	FY '30 – FY '35	
Bond	1,670	1,750	1,000	2,600				7,020
Cash								
Total	1,670	1,750	1,000	2,600				7,020
Funded Balance	706	1,750						2,456



St. Albans: Northwest State Correctional Facility (NWSCF) Roof Replacement

- Replacement of 10 roofs
- Membrane, asphalt shingle and corrugated metal roofs
 - Increase insulation
 - Remove and reinstall razor ribbon
 - Increase fascia board heights
 - Install access ladders
 - Raise plumbing stacks, HVAC curb and exhaust vents
- Repair and anchor brick on the security wall



2 ISOMETRIC VIEW (FOR REFERENCE ONLY)

Cost Allocations (in thousands)	Approved Through	Current Year	Budget Year	Budget Year	Future Requirements			Total
	FY '24	FY '25	FY '26	FY '27	FY '28	FY '29	FY '30 – FY '35	
Bond	1,300	400	1,200					2,900
Cash								
Total	1,300	400	1,200					2,900
Funded Balance	1,299	400						1,699

Newport: Northern State Correctional Facility – Sprinkler System Upgrades

- Constructed in 1993
- Sprinkler system is both wet and dry type systems
- Replace the dry system pipes

Cost Allocations <i>(in thousands)</i>	Approved Through	Current Year	Budget Year	Budget Year	Future Requirements			Total
	FY '24	FY '25	FY '26	FY '27	FY '28	FY '29	FY '30 – FY '35	
Bond				1,000	2,100			3,100
Cash								
Total				1,000	2,100			3,100
Funded Balance								

