

SFY26-SFY27 Capital Request

Vermont Department of Fish and Wildlife
Andrea Shortsleeve, Interim Commissioner



Outline

- Department Overview
- Capital Usage Overview
- SFY26/SFY27 Capital Request Summary
- SFY26/SFY27 Project Details



Department Mission:

The conservation of fish, wildlife and plants and their habitats for the people of Vermont.

What we conserve



Natural communities



Fish



Habitat



Invertebrates



Wildlife



Plants

Who we serve



Wildlife watchers



Future generations



Anglers



Hunters and trappers

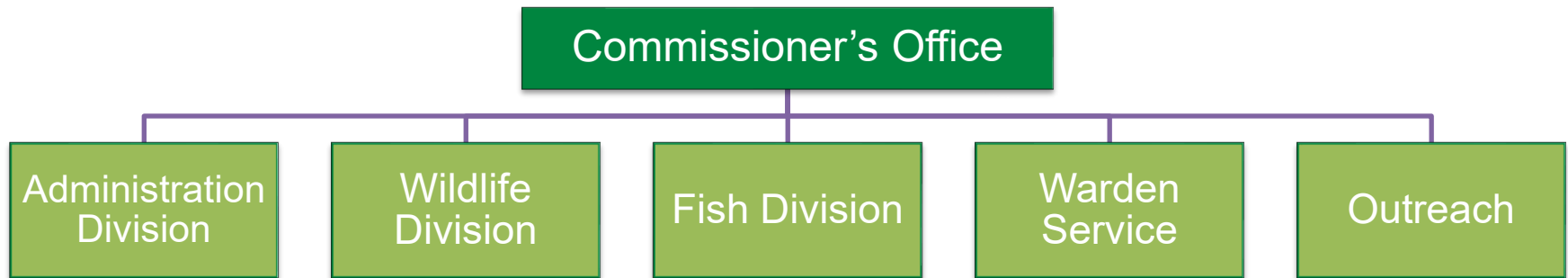


Communities



Landowners

Fish and Wildlife Organizational Structure



Capital projects at F&W



General Department

Residences

Department owned buildings



Fish Culture

5 locations



Access Areas

Approx 196 across the state



Green Mountain Conservation
Camp (GMCC)

Woodbury and Castleton



Wildlife Management Areas
(WMAs)

105 WMA's

130,000 acres

Roads, parking areas, kiosks, buildings, dams

SFY26/SFY27 Request

\$2.13M Total

Project	SFY26	SFY27
General Department	\$ 96,000	\$ -
Fish Culture	\$ 289,000	\$ 696,000
Access Areas	\$ -	\$ 100,000
GMCC	\$ 220,000	\$ -
WMA's	\$ 187,500	\$ 233,360
Fish Division boat	\$ 100,000	\$ -
Warden Service boat	\$ 212,500	\$ -
Total	\$ 1,105,000	\$ 1,029,360

General Department Projects



Sandbar
residence
repair

Essex regional
office repairs

Fish Culture Projects

Drill second well
at Roxbury

Resurface
asphalt between
indoor raceways
at Ed Weed

Epoxy floors of
pavilion tanks



Fish Culture Projects cont.



Roof repairs

Hazardous
tree removal

Repairs to
shop
chimney

Access Areas

Construction of ADA accessible boat ramps and fishing platforms



GMCC

Bathroom
moisture
mitigation

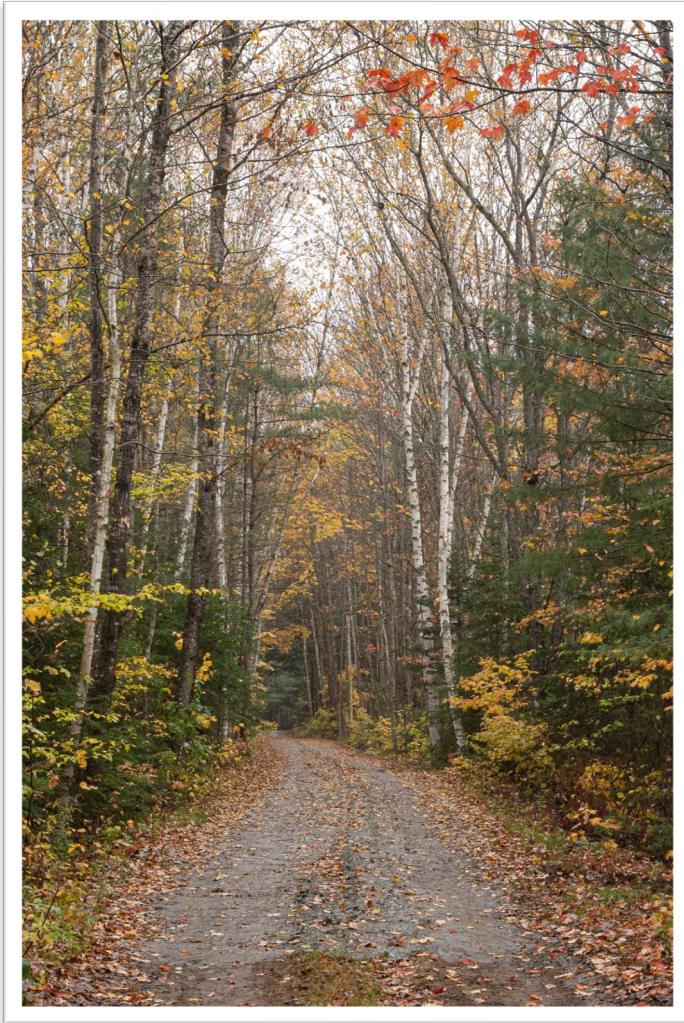
ADA ramp
cabin 1

Education Center
and Dining Hall
power wash and
stain

Road work



Wildlife Management Areas



Statewide WMA
infrastructure

Repairs and
maintenance of
dams

Boats

Recreational
boating safety
vessel for patrol on
Lake Champlain

Electrofishing boat
for Fish
Management

