



FORESTS, PARKS & RECREATION
VERMONT



AGENCY OF NATURAL RESOURCES

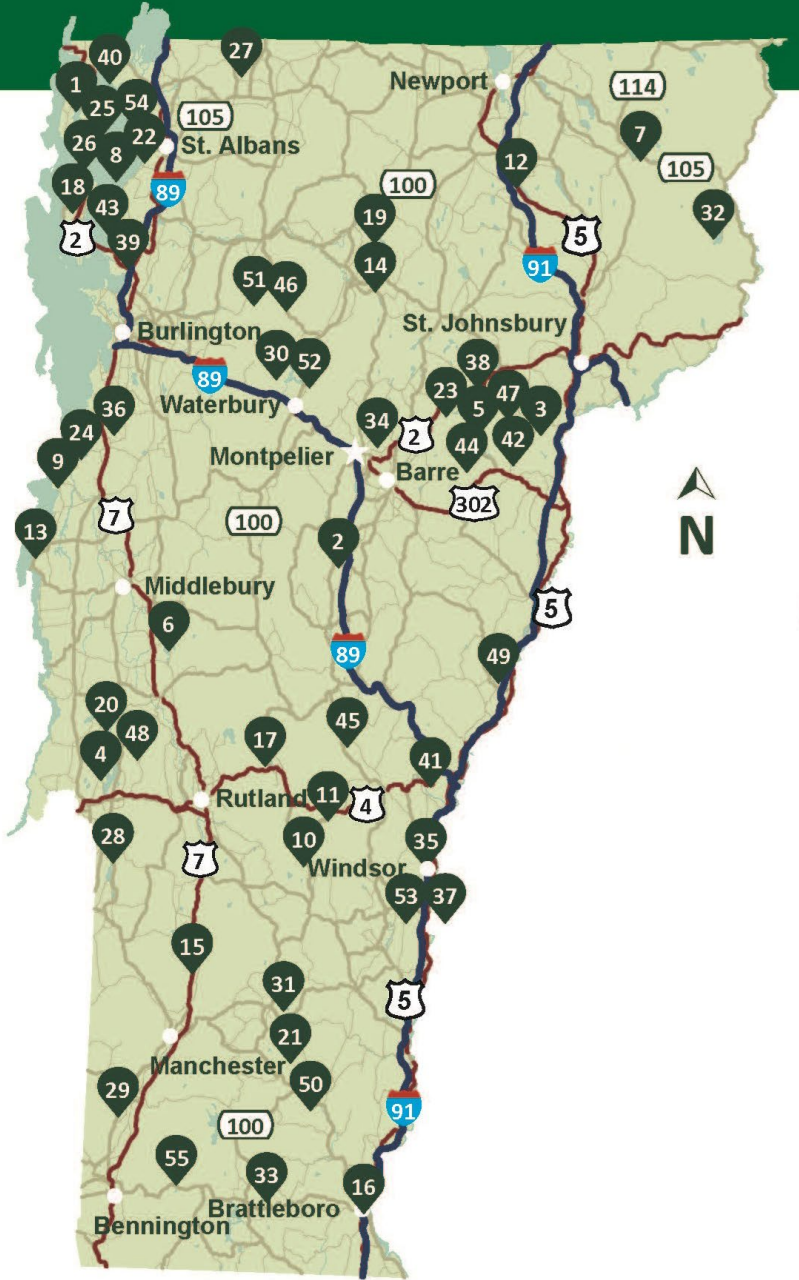
CAPITAL BILL LINE ITEMS

Danielle Fitzko, Commissioner



WELCOME

VERMONT STATE PARKS



KEY FACTS



55
STATE PARKS



39
CAMPGROUNDS



2,225
CAMPSITES



51
CABINS



29
BEACHES



597,552
DAY VISITORS



503,369
CAMPING VISITORS



1000+
INSURED STRUCTURES



EQUIVALENT TO THE
5TH LARGEST
MUNICIPALITY
IN THE STATE OF VERMONT



120
VENDORS



47
YEAR-ROUND
STAFF



450
SEASONAL
STAFF

STATE STATISTICS

\$3 BILLION
TOURISM
INDUSTRY

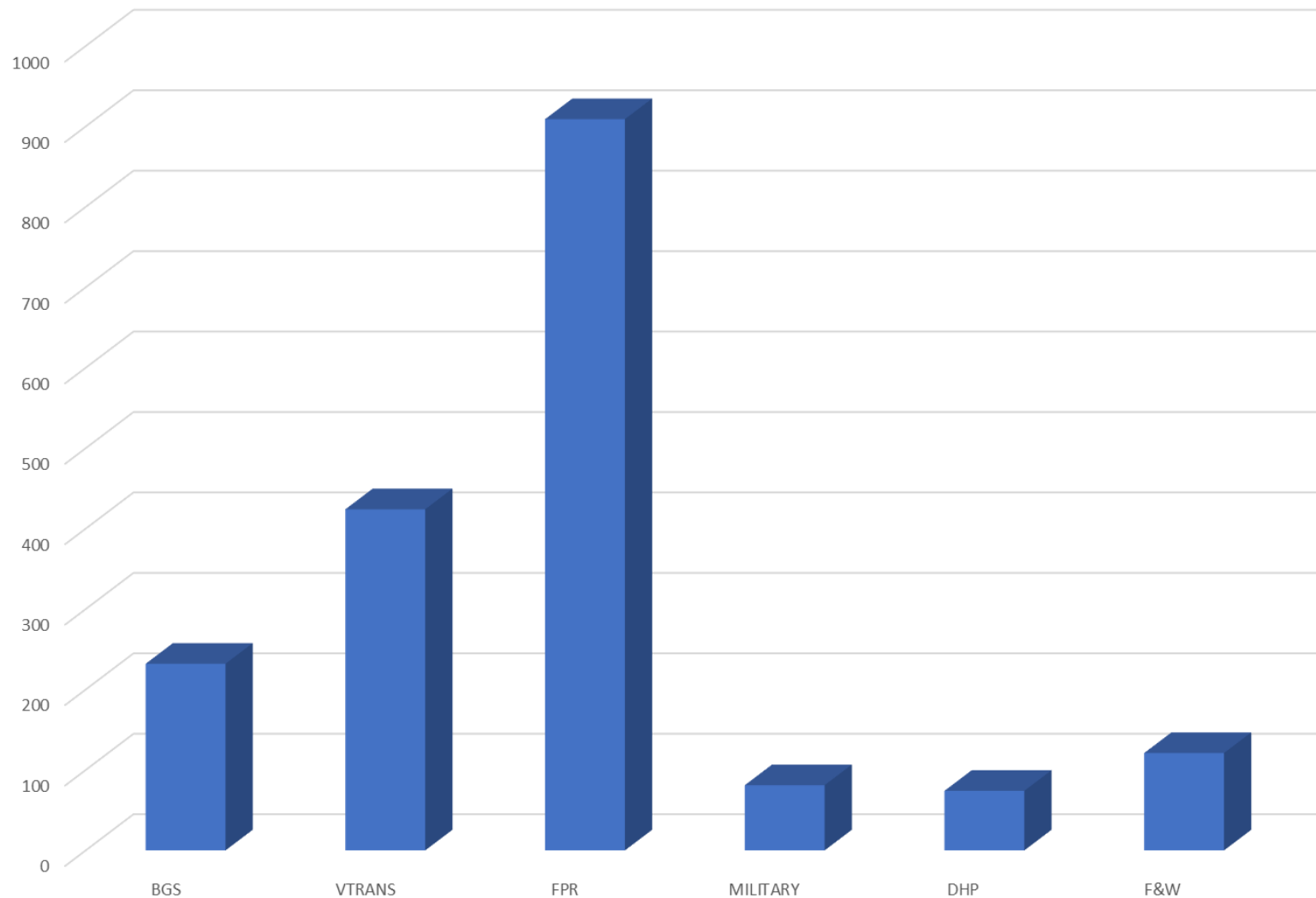
OUTDOOR RECREATION
REPRESENTS
OVER 4.61%
OF VERMONT'S GDP



VERMONT IS THE
SECOND HIGHEST
IN THE NATION
FOR OUTDOOR RECREATION,
COMPRISING THE
LARGEST PERCENTAGE
OF THE STATE'S
ECONOMY

PARKS INFRASTRUCTURE

Insured Structure Count



Source:
2022 BGS property
summary

TYPES OF FACILITIES THAT WE MAINTAIN

- **Customer Care**

- Toilets
- Playgrounds

- **System Care**

- Water Systems
- Wastewater Systems
- Electrical Service

- **Employee Care**

- Service Centers
- Housing
- Other “Back of House”



MORE TECHNICAL THAN MOST KNOW

- **40 miles** of buried piping carrying drinking and wastewater
- Maintenance staff are certified to run **35** regulated drinking water systems
- **9** wastewater systems
- Most structures now eligible for **Historic Preservation**
- **Operational Environmental Permit** counts have increased



PARKS MODERNIZATION STUDY



**INVESTING TODAY
TO BUILD THE FUTURE
FOR VERMONT
STATE PARKS**



PARTICIPATING PARTNERS



**Vermont Outdoor
Business Alliance**



Vermont Outdoor Recreation Economic Collaborative



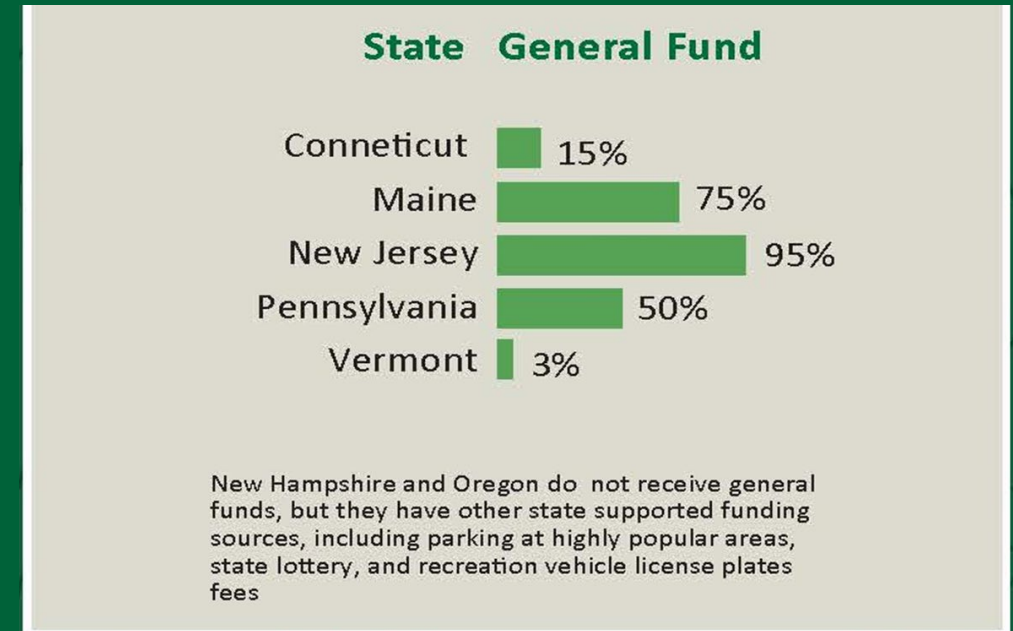
DEPARTMENT OF TOURISM
& MARKETING



KEY FINDINGS RELATED TO INFRASTRUCTURE



- Critical investment and asset management are required to address the aging and stressed VSP infrastructure valued at over \$280 million.
- Capital funding for infrastructure improvements does not meet the standard rates of deterioration and necessary improvements.



KEY FINDINGS RELATED TO INFRASTRUCTURE



- VSP facilities remain deficient in meeting ADA requirements, state stormwater and wastewater management, modern sanitary facilities, and forthcoming climate initiatives such as electrification and resilience measures.

KEY FINDINGS RELATED TO INFRASTRUCTURE

- Vermont State Parks and recreational infrastructure statewide will be increasingly affected by climate change.



A scenic view of a lake between mountains. The water is a deep blue-green color, and the mountains are covered in dense green forest. The sky is a clear blue with a few white clouds. In the foreground, there are several large, dark rocks partially submerged in the water. The text "CAPITAL LINE ITEMS" is overlaid in the center of the image in a bold, white, sans-serif font. A thin white vertical line is positioned on the left side of the image, extending from the top to the bottom.

CAPITAL LINE ITEMS

SECTION 9: LINE 87 WITHIN STATE PARKS

Infrastructure Rehabilitation And Improvement

FY26 - \$3,500,000 & FY27 - \$2,500,000



**Smaller Scale
Projects**



**Emergency
Wastewater Reserve**



Larger Scale Projects

SECTION 9: LINE 87 WITHIN STATE PARKS

Infrastructure Rehabilitation And Improvement

FY26 - \$3,500,000 & FY27 - \$2,500,000



Sand Bar State Park Entrance

Translating Success



SECTION 9: LINE 87 WITHIN STATE PARKS

Infrastructure Rehabilitation And Improvement

FY26 - \$3,500,000 & FY27 - \$2,500,000



Maintenance Shop at Gifford Woods State Park

Killington, VT



SECTION 9: LINE 87 WITHIN STATE PARKS

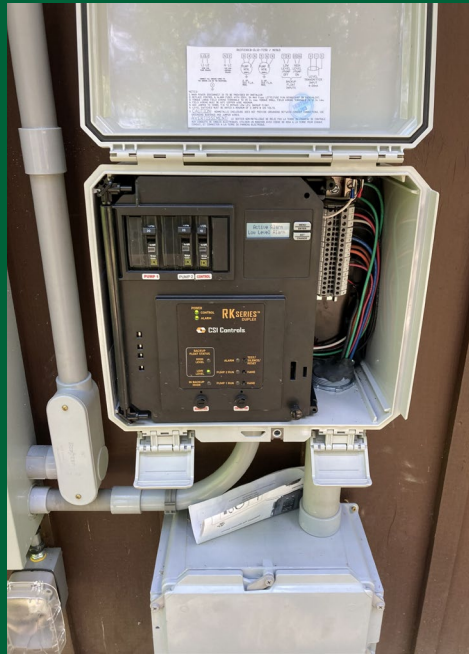
Infrastructure Rehabilitation And Improvement FY26 - \$3,500,000 & FY27 - \$2,500,000



Toilet building at Maidstone State Park
Maidstone, VT

SECTION 9: LINE 87 WITHIN STATE PARKS

Infrastructure Rehabilitation And Improvement FY26 - \$3,500,000 & FY27 - \$2,500,000



**Waste water at Fort Dummer State Park
Brattleboro, VT**

SECTION 9: LINE 87 WITHIN STATE PARKS

Infrastructure Rehabilitation And Improvement

FY26 - \$3,500,000 & FY27 - \$2,500,000



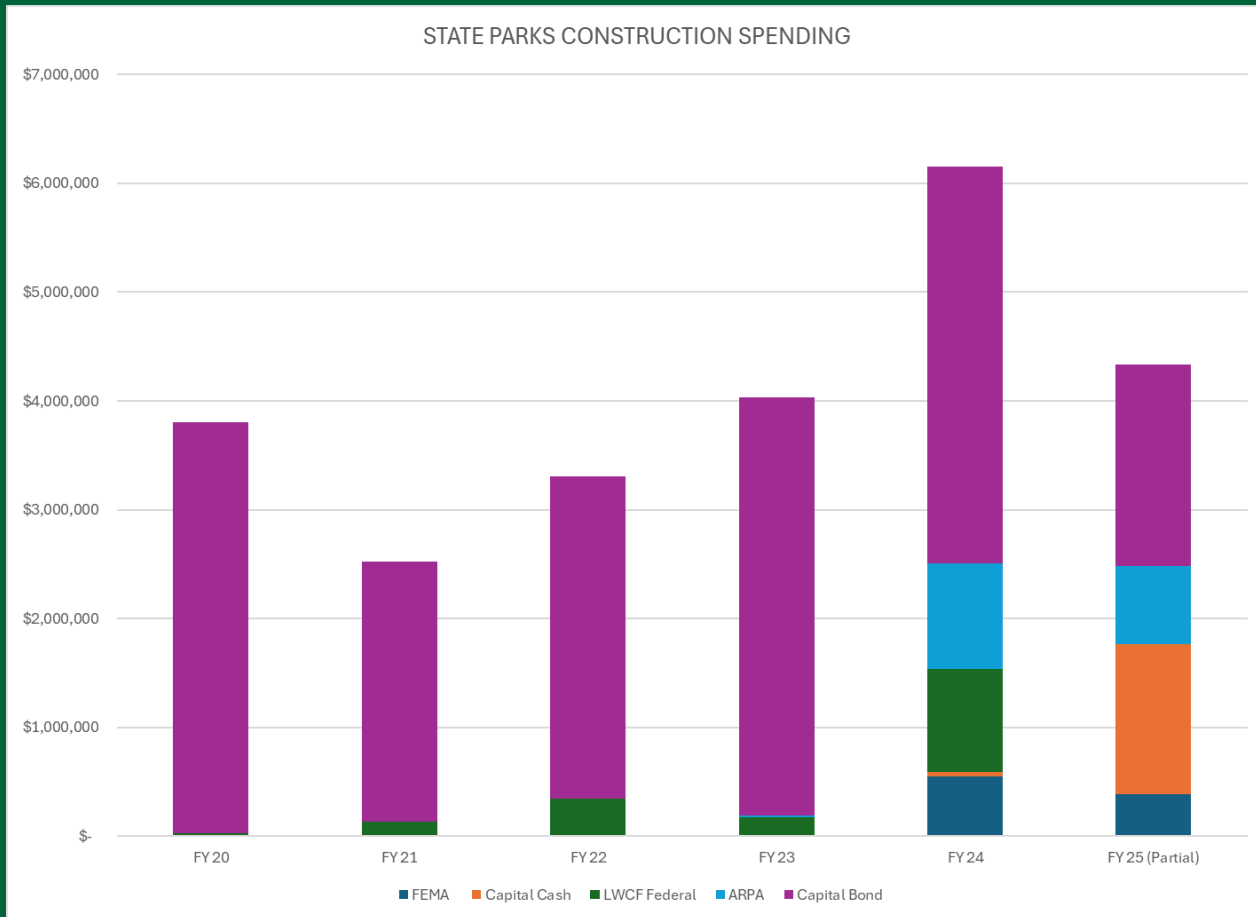
**3-Acre Rule Project at Allis State Park
Randolph, VT**

SECTION 9: LINE 87

WITHIN STATE PARKS

Infrastructure Rehabilitation And Improvement

FY26 - \$3,500,000 & FY27 - \$2,500,000



State Parks has the Capacity to Spend.

It isn't always easy and there are bumps in the road, but we recover quickly

SECTION 9: LINE 88

OUTSIDE OF STATE PARKS

Public Land Access Infrastructure (PLAI)

FY26 & FY27 - \$700,000



People come for the view:

Upgrades are needed to continue to serve as iconic destinations for generations to come



SECTION 9: LINE 88

OUTSIDE OF STATE PARKS

Public Land Access Infrastructure (PLAI)

FY26 & FY27 - \$700,000



South End of Lake Willoughby
Westmore, VT

SECTION 9: LINE 88

OUTSIDE OF STATE PARKS

Public Land Access Infrastructure (PLAI)

FY26 & FY27 - \$700,000



Monroe Parking Area
Duxbury, VT

SECTION 9: LINE 88

OUTSIDE OF STATE PARKS

Public Land Access Infrastructure (PLAI)

FY26 & FY27 - \$700,000



**Mt. Philo
Charlotte, VT**

SECTION 9: LINE 88

OUTSIDE OF STATE PARKS

Public Land Access Infrastructure (PLAI)

FY26 & FY27 - \$700,000



Forest City Bridge -
Camels Hump State Park
Huntington, VT

SECTION 9: LINE 88

OUTSIDE OF STATE PARKS

Public Land Access Infrastructure (PLAI)

FY26 & FY27 - \$700,000



Cotton Brook Road
Stowe, VT

SECTION 10: CLEAN WATER - LINE 100

ANR LANDS

Forestry Access Road Water Quality Improvements

FY26 - \$200,000



BEFORE

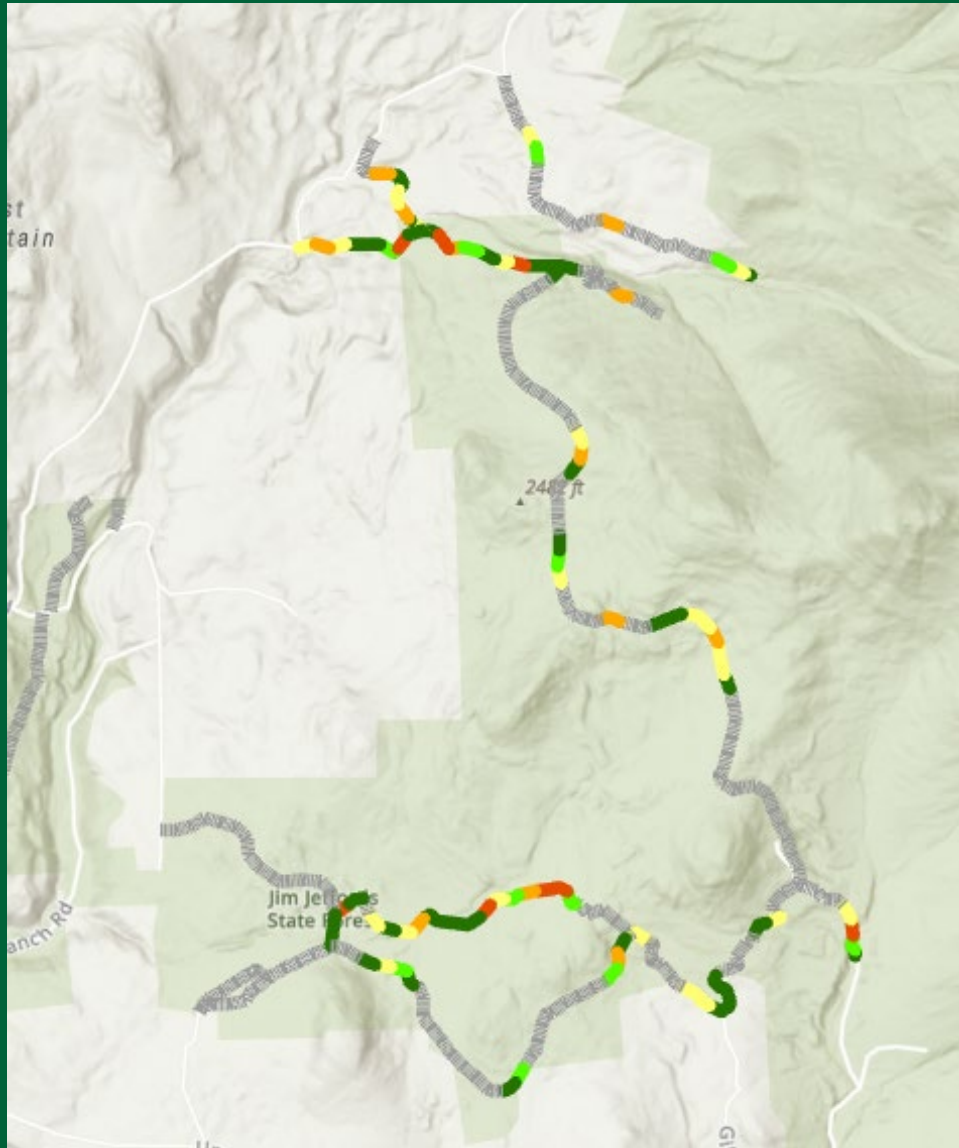


AFTER

Corrective Practices

- Ditch relief culverts
- Ditch disconnection culverts
- Armoring culvert outlets
- Correctly sizing structures
- Re-crowning & grading the road surface & shoulders
- Installing new road surface material

ROAD EROSION INVENTORY



Coolidge State Forest and Jeffords State Forest Mendon and Shrewsbury, VT

- Very High Priority
- High Priority
- Moderate Priority
- Low Priority
- Meets AMP Standards
- Not Hydroconnected



FORESTS, PARKS & RECREATION

VERMONT



AGENCY OF NATURAL RESOURCES

