

# House Committee on Commerce & Economic Development

April 17, 2025

# The Economic & Labor Market Information Division *online @ VTLMi.info*

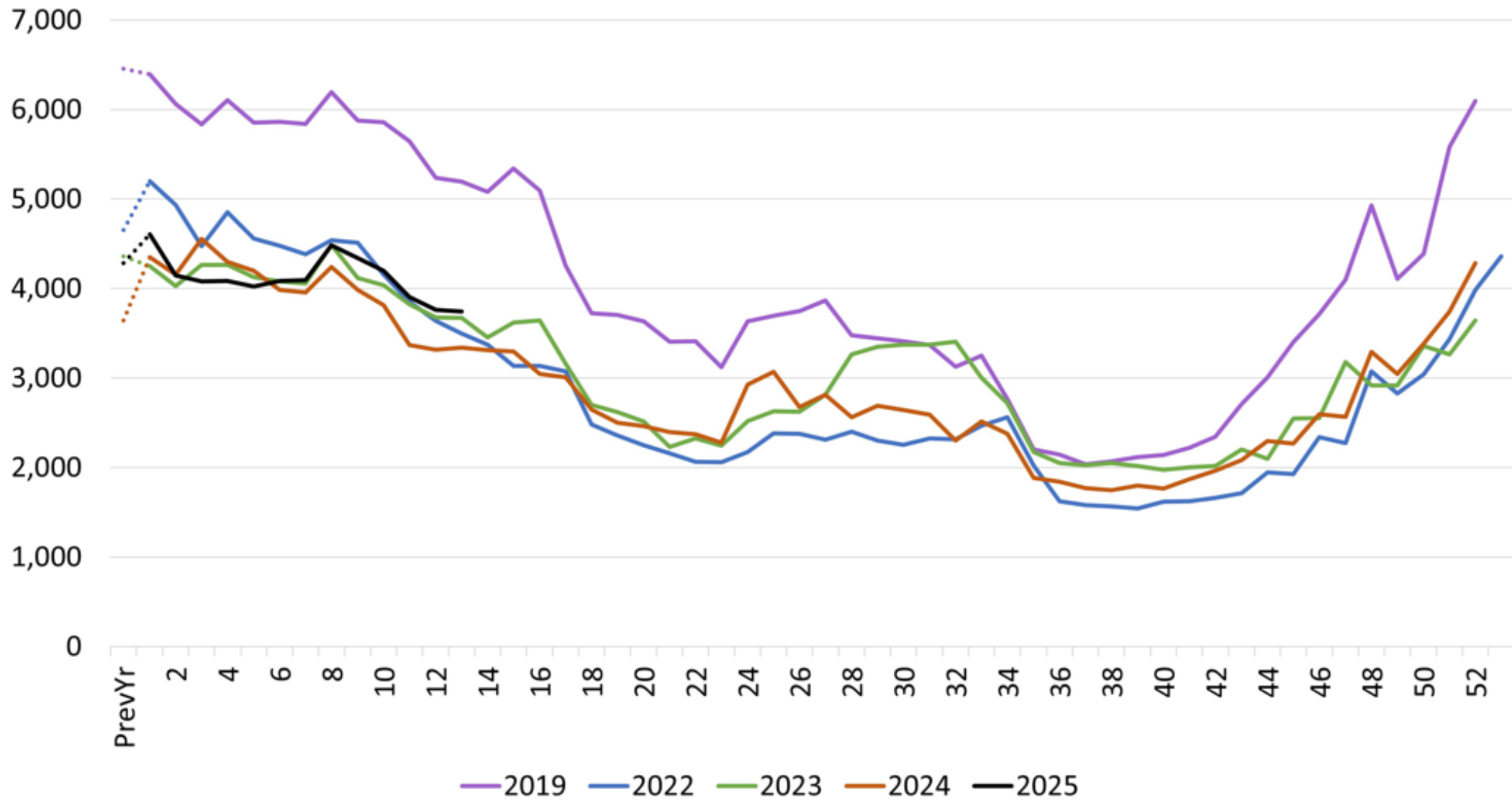
Help Us Serve You Better  
**Complete ELMI  
Customer Survey**

- Housed in the Vermont Department of Labor
- State partner to the Federal Government
- 90% federally funded
  - Thank you USDOL Employment & Training Administration!

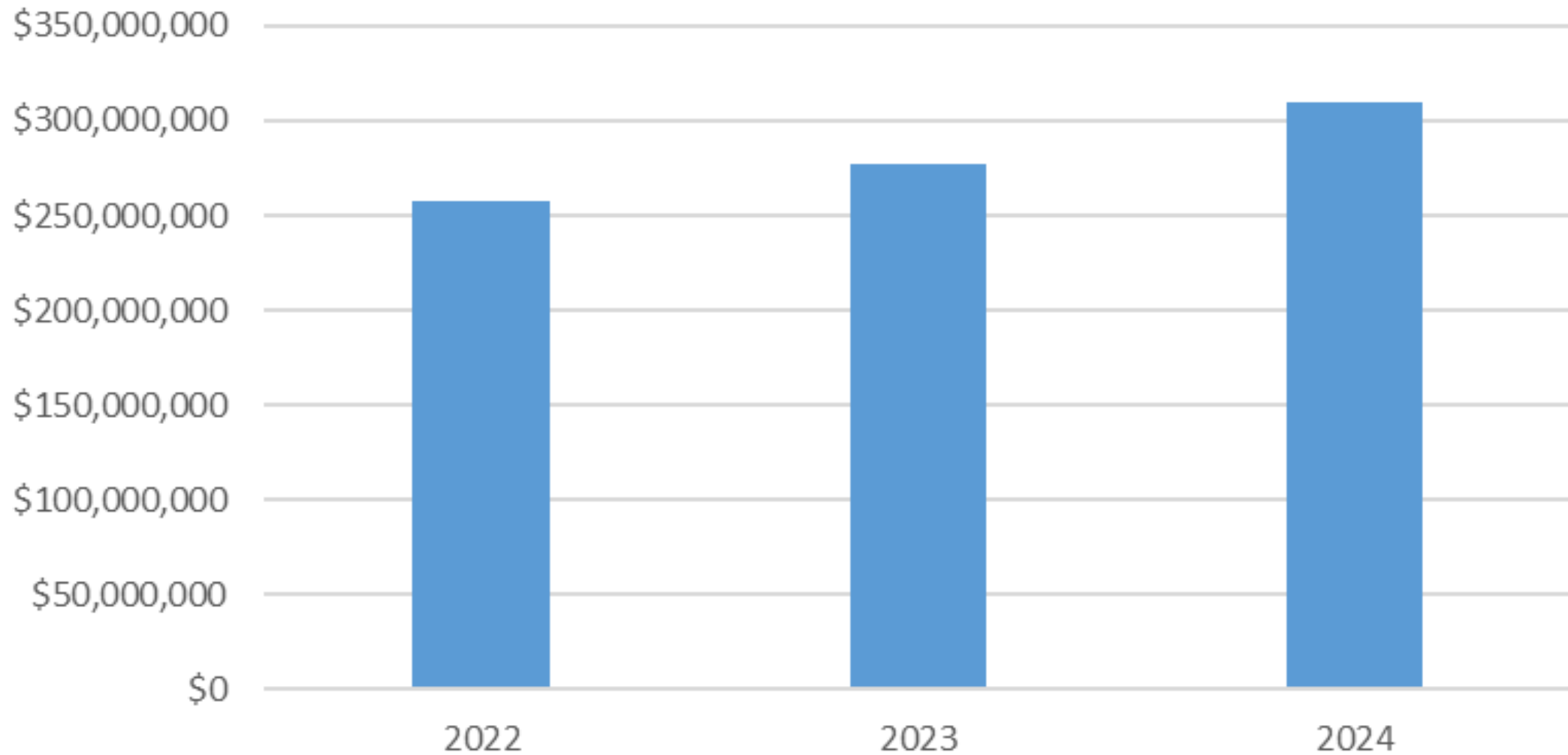
**Purpose:** to produce, disseminate and explain economic data for the benefit of the State of VT, educational institutes, employers, students, job-seekers, researchers, and the public.



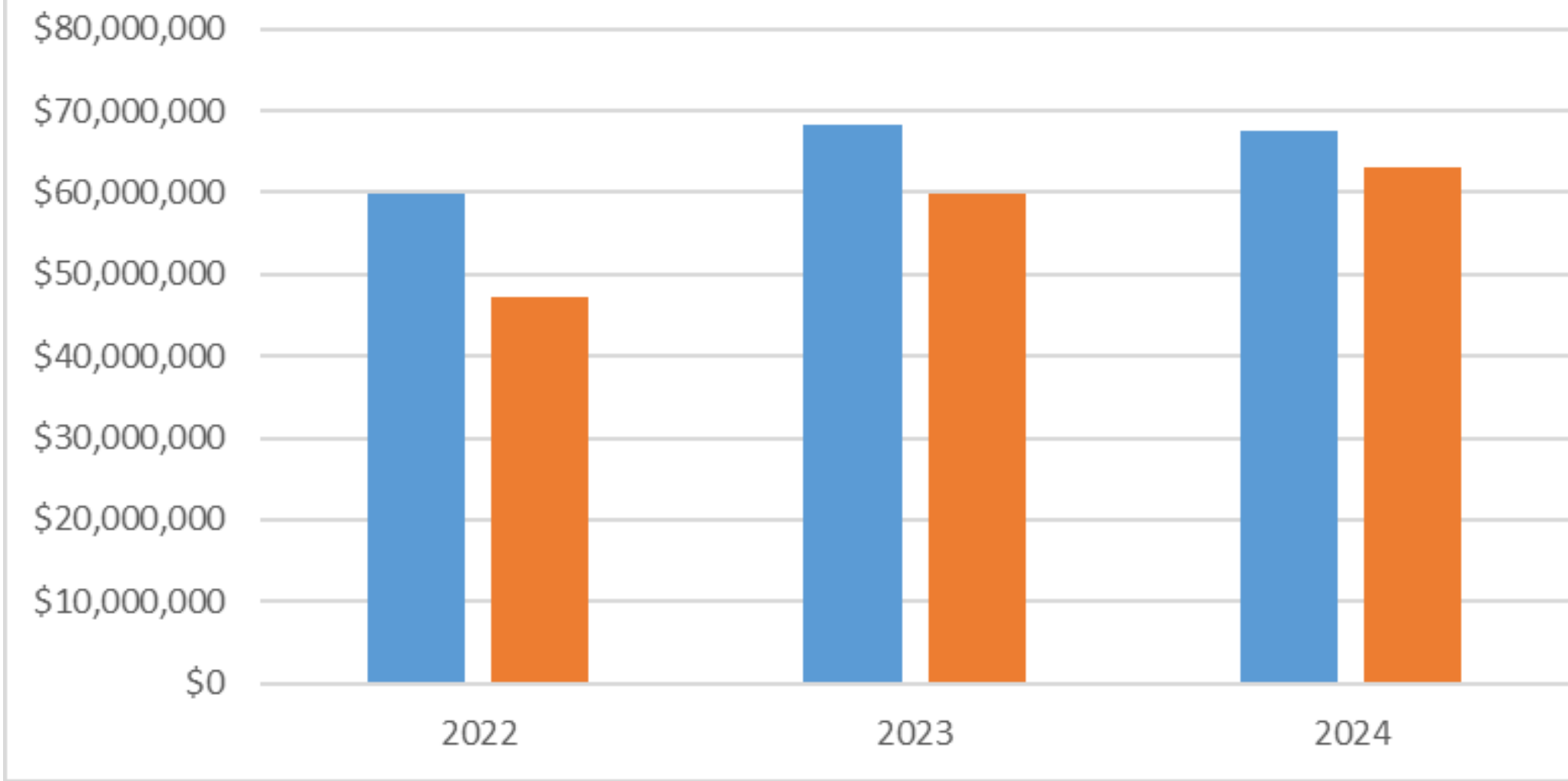
# Weekly Total Regular UI Claims



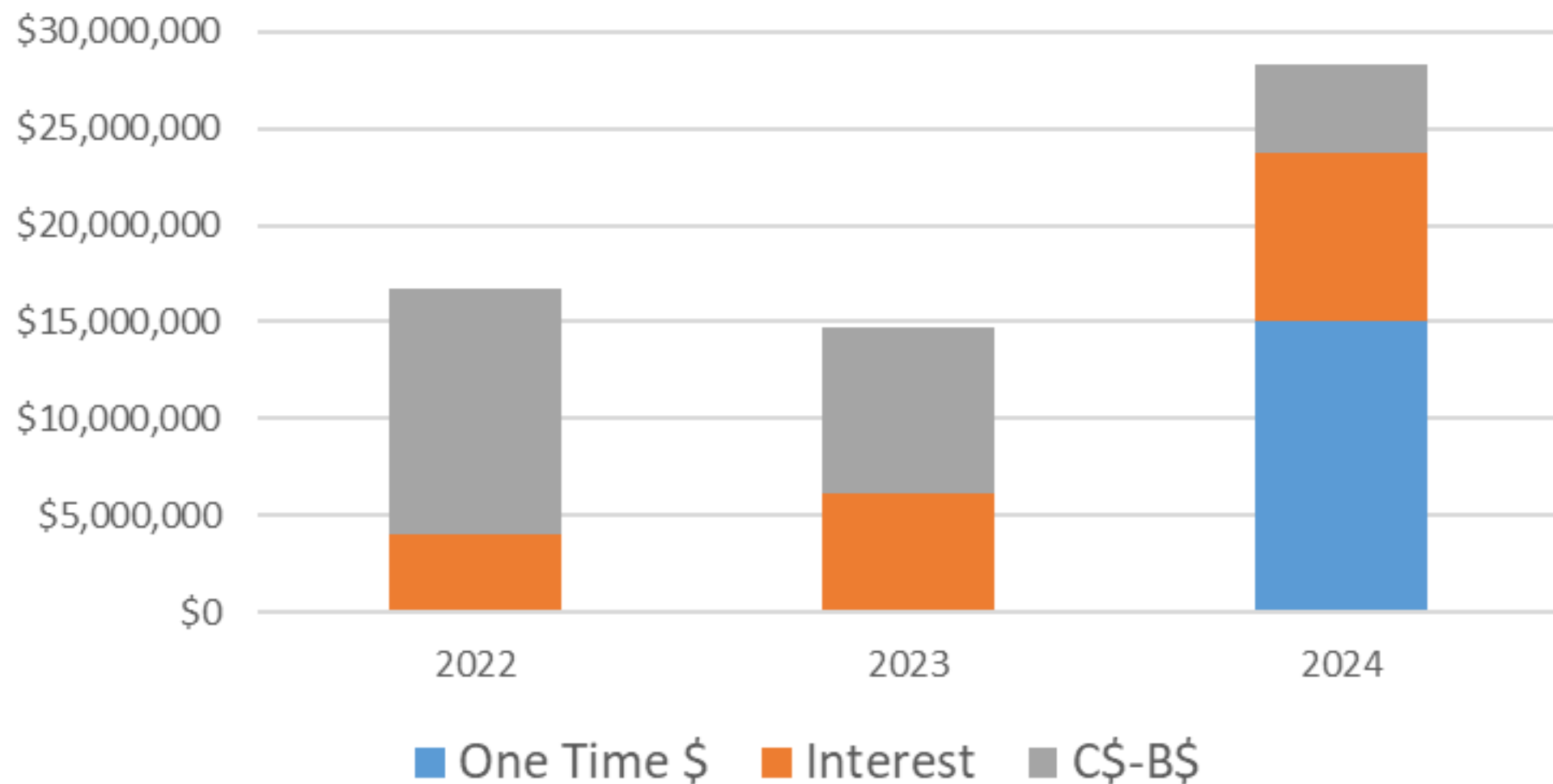
## UI Trust Fund - Balance to Pay Benefits



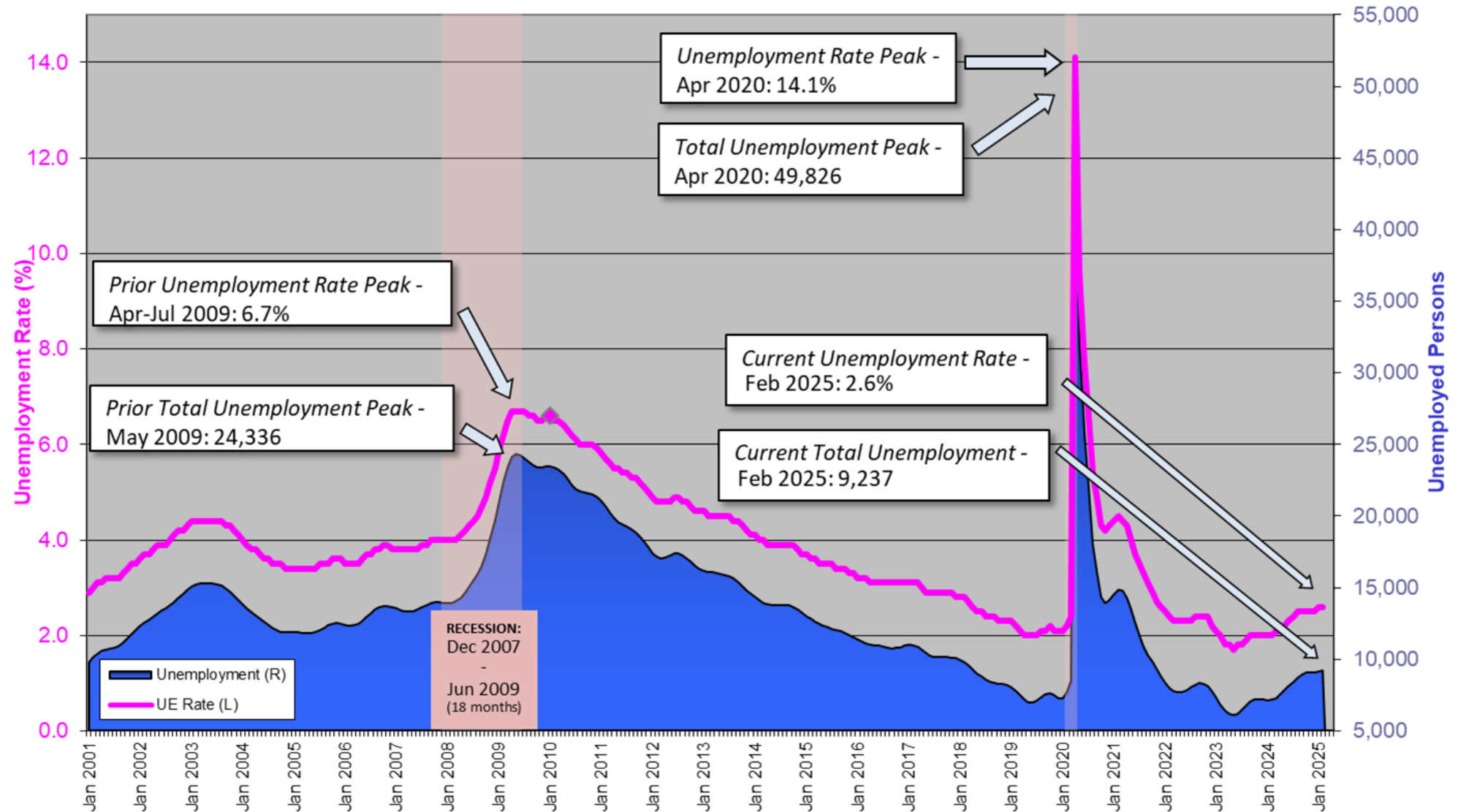
# Contributions vs. Benefits Paid



## Major Components of Change to UI TF Balance



Vermont Unemployment & Unemployment Rate  
**January 2001 - Present; Seasonally Adjusted**



Source: VT Dept. of Labor, [www.VTLMI.info](http://www.VTLMI.info)

# Thank you!

Mathew Barewicz

Economic & Labor Market Information Division

Vermont Department of Labor

[mathew.barewicz@Vermont.gov](mailto:mathew.barewicz@Vermont.gov)

[www.VTLMI.info](http://www.VTLMI.info)

Help Us Serve You Better  
**Complete ELMI  
Customer Survey**

(visit [VTLMI.info](http://VTLMI.info))

