

Vermont Department of Labor

**Overview for the House Committee on Commerce and
Economic Development**

January 23, 2025

The Department of Labor exists to improve the lives of working Vermonters. Together, we serve the people and businesses of our great state so all of us can live well, be safe, and experience meaningful employment.



Department Purpose

Working with an **OPERATIONAL EXCELLENCE** mindset

Providing **COMPASSIONATE SERVICE** to everyone

Acting with **PROFESSIONALISM** and **INTEGRITY** in all that we do

Ensuring **EQUITY, ACCESS,** and **BELONGING** for our staff and our customers



Department Principles

Governor's Office Liaison
Amanda Wheeler

Office of Workforce
Strategy and Development
Executive Director
Sabina Haskell

State Workforce
Development Board

Commissioner
Michael Harrington

Deputy Commissioner
Kendal Smith

Principal Assistant /
Legislative Liaison
Rowan Hawthorne

Executive Assistant
Roger Van Tassel

Communications
Rachel Dumeny

Workforce Development
Director
Jay Ramsey

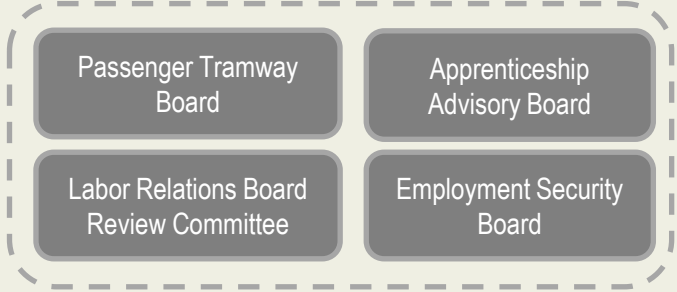
Economic & Labor
Market Information
Director
Mathew Barewicz

Unemployment
Insurance
UI Associate Director
Kristine Murphy

Workers' Comp & Safety
Director
Dirk Anderson

Legal Services &
General Counsel
Robert Depper

Business Administration
& CFO
Chad Wawrzyniak



Department Structure

Workforce Development

11 Regional Offices

State Workforce Employment & Training

Operates State/Fed Programs

Workforce Innovation & Opportunity Act

Workers' Comp & Safety

Workers' Compensation

VOSHA

Project WorkSAFE

Passenger Tramway

RETAIN

ELMI

Current Employment Statistics

Occupational Safety & Health Statistics

Occupational Employment & Wage Statistics

Short-term & Long-term Occupational Projections

Unemployment Insurance

Benefits

Taxes

Program Integrity & Fraud

RESEA

Legal Services

UI, WC, & VOSHA Legal Appeals

Wage & Hour

Government Transparency

Business Office

Facilities

Finance

Contracts & Procurement

Operations, Policies, and Procedures

Performance Management

EO & Accessibility

Department Structure

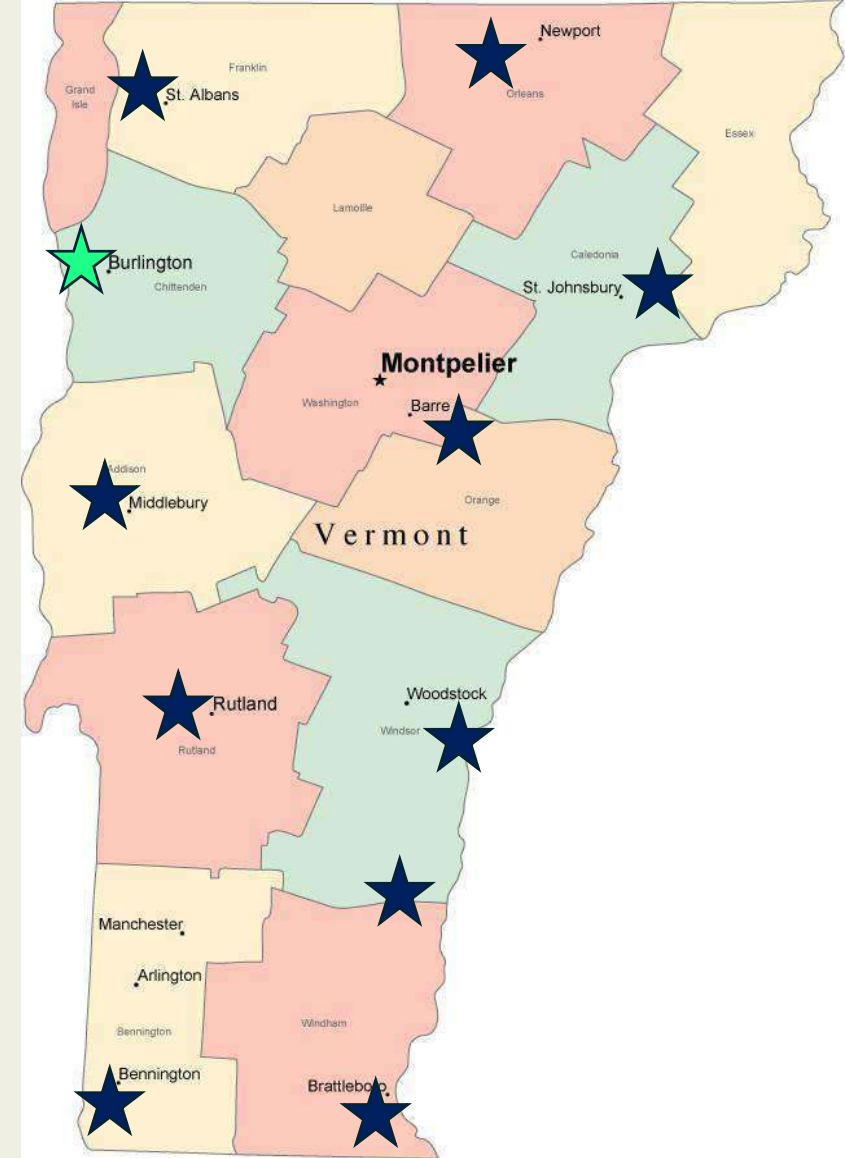


DEPARTMENT OF LABOR

A proud partner of the [americanjobcenter](#) network

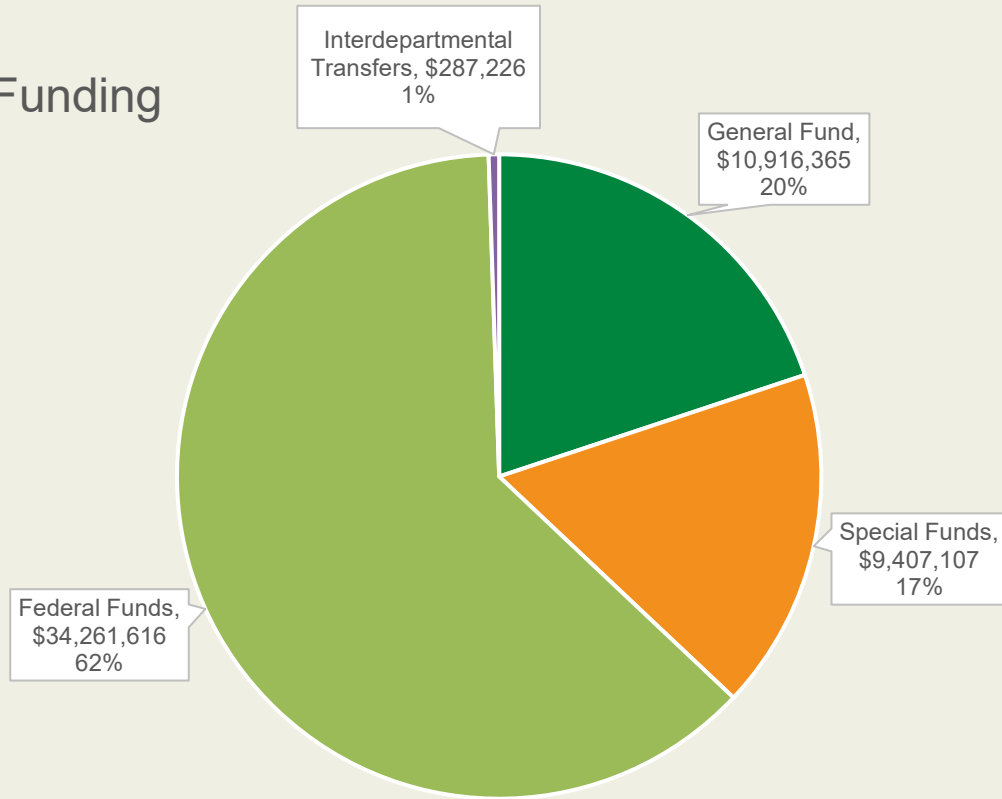
Job Centers

- Barre
- Bennington
- Brattleboro
- Burlington
- Middlebury
- Newport
- Rutland
- Springfield
- St. Albans
- St. Johnsbury
- White River Junction



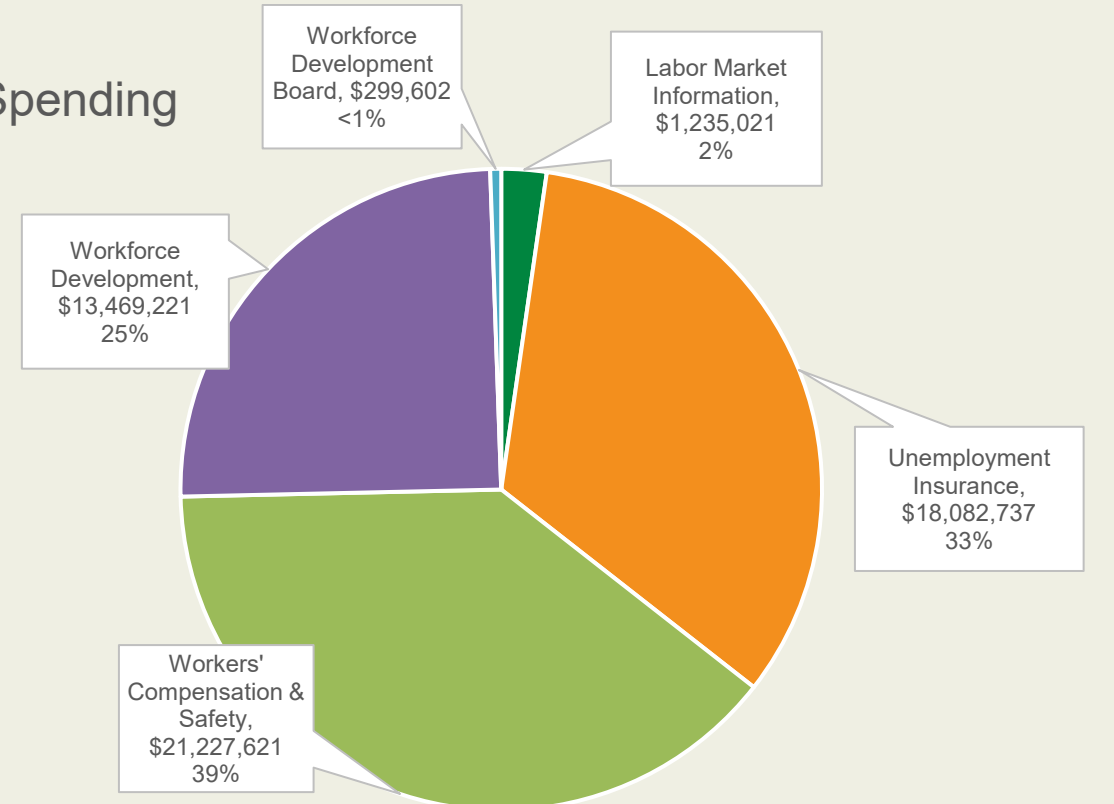
Department Field Offices

Funding



- General Fund
- Special Funds
- Federal Funds
- Interdepartmental Transfers

Spending



- Labor Market Information
- Unemployment Insurance
- Workers' Compensation & Safety
- Workforce Development
- Workforce Development Board

Department of Labor Funding FY25

Workforce Development

Employment and Recruitment Services

Workers' Compensation and Safety

Workplace Safety and Dispute Resolution

Economic and Labor Market Information

Labor Force and Economic Data and Analysis

Unemployment Insurance

Employer Taxes and Benefits

Department Functions

Director: Jay Ramsey

Staff: ~ 64

The WD division administers federal and state workforce development programs to promote workforce expansion and engagement through trainings, education programs, apprenticeships, and support services.

There are 11 job centers across the state.

11 Regional Office Teams with
Employment & Training
Consultants

Refugee & Immigrant
Employment Services

Registered Apprenticeship
Programs

Work-Based Learning & On the
Job Training

Youth Employment & Services

Veterans' Services & Programs

Dislocated Worker Grants

State Training Programs &
Incentives

Workforce Development

 VERMONT
DEPARTMENT OF LABOR

A proud partner of the  americanjobcenter network

Interim Director: Kristine Murphy

Staff: ~ 87

The Unemployment Insurance division provides short-term benefits to those who lose their jobs through no fault of their own. The UI trust fund is 100% funded by contributions from employers.

Unemployment Benefits Claims Processing

Employer Tax Contributions

Adjudications

Program Integrity & Fraud

Benefits Accuracy Measurement

Re-Employment Services & Eligibility Assessment

Appeals*

Unemployment Insurance

Director: Mathew Barewicz

Staff: ~ 11

E&LMI is responsible for producing, disseminating, and explaining economic data for the benefit of the State of Vermont.

Target audiences include elected officials, businesses, educational institutes, students, job-seekers, researchers, and the public.

Current Unemployment
Statistics

Occupational Safety and Health
Statistics

Local Area Unemployment
Statistics

Quarterly Census of
Employment & Wages

Occupational Employment &
Wage Statistics

Specialized Grants & Federal
Reporting

Short-term and Long-term
Occupational Projections

Labor Market Information



A proud partner of the  americanjobcenter network

Director: Dirk Anderson

Staff: ~ 45

The Workers' Compensation and Safety Division ensures that workers are protected while on the job and if a workplace injury occurs, that the worker is covered by workers' compensation insurance. The Division includes the Workers' Comp, VOSHA, Project WorkSAFE, and Passenger Tramway.

VOSHA enforces both state and federal workplace safety rules and regulations. It also investigates severe workplace injury incidents. Project WorkSAFE provides free, confidential safety consultations to businesses and municipalities to ensure workplace are safe, and Passenger Tramway inspects all of Vermont's ski lifts and new ski lift construction.

Workers' Compensation

Vermont Occupational
Safety & Health
Administration

Passenger Tramway

Project WorkSAFE

Workers' Comp & Safety



A proud partner of the [americanjobcenter](#) network

The Office of Workforce Strategy and Development was created under Act 146 (2024).

It oversees the convening and collaboration of workforce efforts across the State of Vermont and advises the Governor on strategies to strengthen Vermont's workforce.

The Office has an executive director and a staff assistant and works in tandem with the Department of Labor and the Agency of Education.

The State Workforce Development Board falls under the Office and advises the Governor, the Executive Director, and the Commissioner of Labor on the development and implementation of a comprehensive, coordinated, and responsive workforce education and training system, as required under the federal Workforce Innovation and Opportunity Act (WIOA).

The Board has 27 members which include state staff, legislators, workforce training providers, municipal officials, and business owners.

OWSD Executive Director:

Sabina Haskell
sabina.haskell@vermont.gov
802-798-6693

SWDB Chair:

Jay Bellows
President/CEO
KORE Power

**Office of Workforce Strategy
and Development (New)**



- Job Seekers
- Employers
- Workers
- Attorneys / Law Firms
- Training Providers
- Insurers
- Legislators
- Business Owners
- Other States
- Federal Government
- Voters

- Special Interest Groups
- Career Advancers
- Students
- Economists
- Policy Makers

Constituents

- Unemployment Benefits
- Workplace Safety Concerns
- Worker Rights
- Wage Complaints
- Re/Employment Services
- Grants
- Data & Information
- Dispute Resolution
- Training Providers

Constituents

**Policy and Legislative
Issues**

Rowan Hawthorne
Legislative Liaison

Constituent Issues

Roger Van Tassel
Executive Assistant

General Inquiries

Roger Van Tassel
Executive Assistant

Michael Harrington, Commissioner
michael.harrington@vermont.gov

Kendal Smith, Deputy Commissioner
kendal.smith@vermont.gov

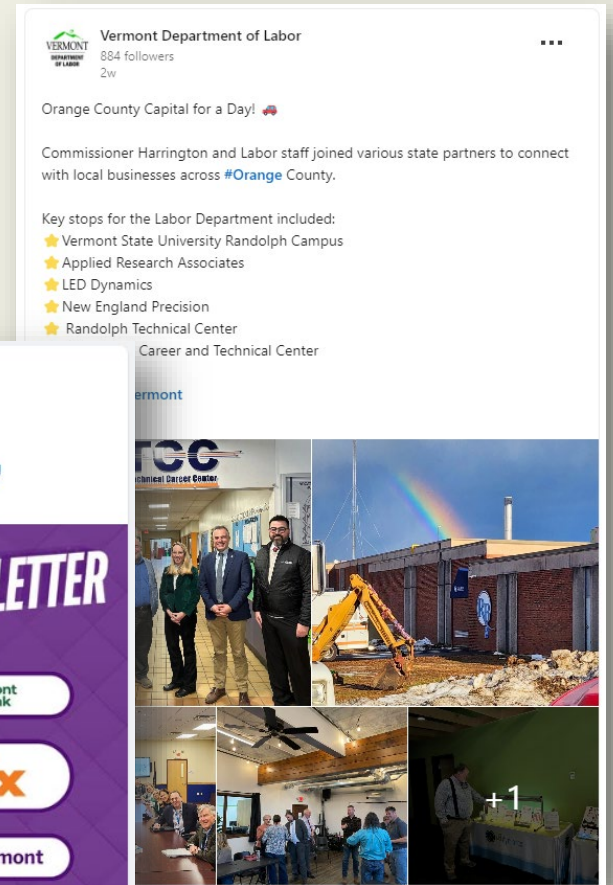
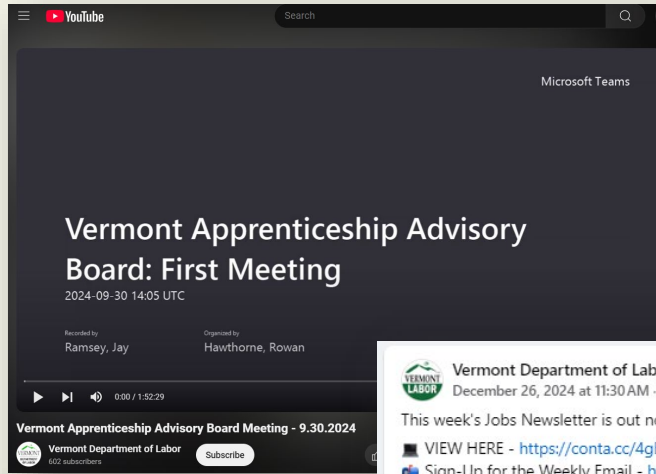
Rowan Hawthorne, Legislative Liaison
rowan.hawthorne@vermont.gov

Roger Van Tassel, Executive Assistant
labor.commissioner@vermont.gov
802-828-4301 (office)

<https://labor.vermont.gov>

Department Contacts

Thank You



Weekly Jobs Newsletter

EMPLOYMENT OPPORTUNITIES FROM AROUND VERMONT, DELIVERED STRAIGHT TO YOUR INBOX!

Over 6,900 Jobs!
(Open positions in Vermont and posted on Vermont JobLink as of 1/2/25)

Visit Vermont JobLink

This week's featured employer:

Consolidated communications

Click the image above to learn more about the featured employer.

Consolidated Communications Enterprise Svcs.

Consolidated Communications Enterprise Services provides advanced communication solutions, including data, internet, voice, and cloud services, to medium and large businesses across a 20-plus state service area. Employees can expect a collaborative work environment that emphasizes innovation and customer satisfaction. The company offers a comprehensive benefits package, including health, dental, and vision insurance, a 401(k) retirement plan, and opportunities for professional development.

Job Locations: Alburg, Burlington, Milton, Montpelier, Rutland, White River Junction

Material Control Specialist | **VoIP Engineer** | **View All Job Openings!**

Interested in being the featured employer? [Reach out today!](#)

WEEKLY JOBS NEWSLETTER

7,100+ Open Positions on Vermont JobLink

Featured Employer: **FedEx**

25 Selected Jobs From Around Vermont

VDOL Is Hiring: UC Claims Adjudicator

Calendar of Upcoming Events

Available Now!

1 Like | 1 Comment