



2025 Airport Update

House Committee on Commerce &
Economic Development

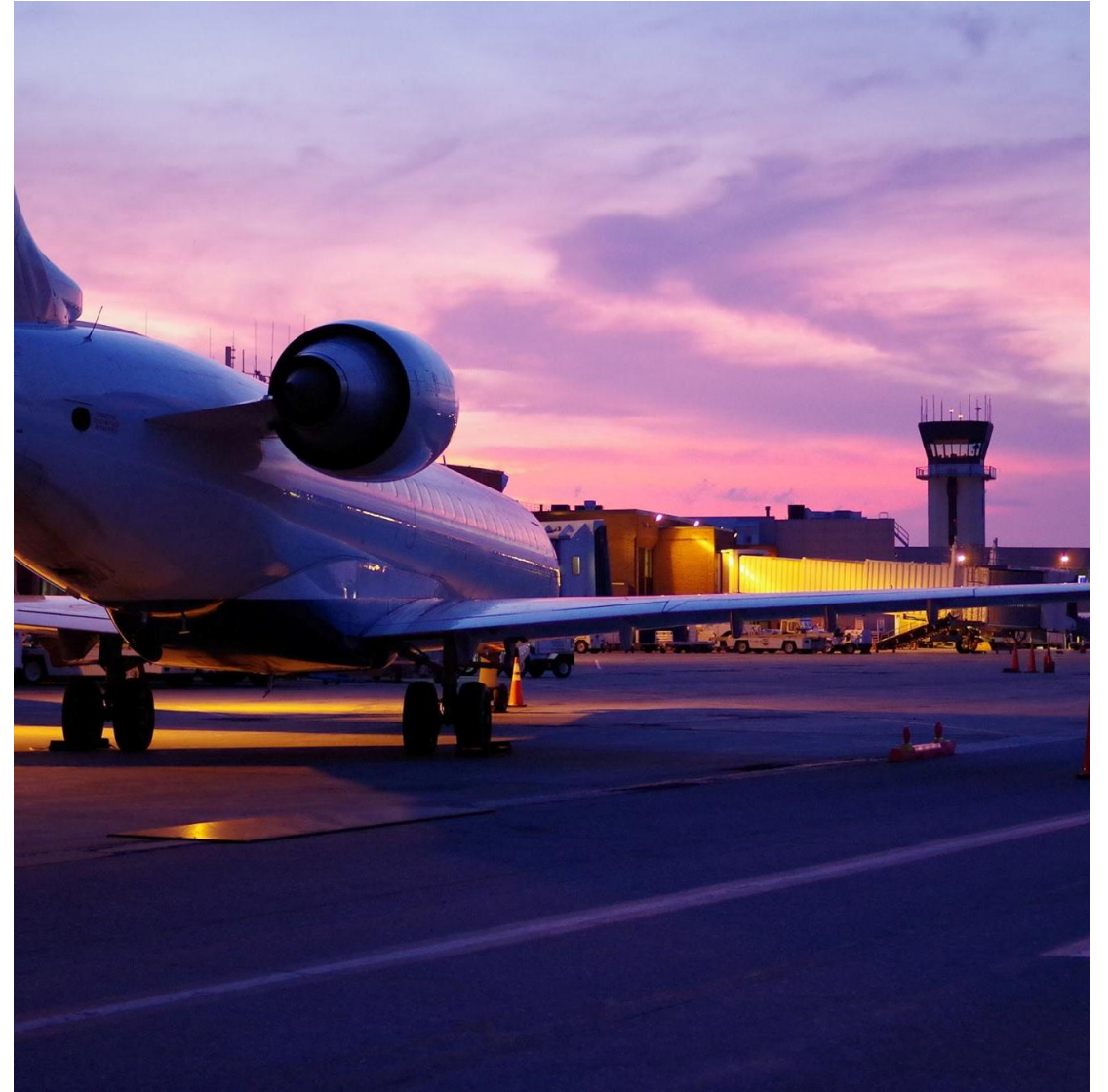
Nic Longo | Director of Aviation

Jeff Bartley | Director of Innovation &
Marketing



What's happening at Leahy BTV

- Who we are and where we go
- Challenges, opportunities and industry Changes
- Passenger Growth
- Carbon Accreditation
- Project NexT and Community Path



WHO WE ARE AND WHERE WE GO

Who is Leahy BTV?

Small-Hub Airport

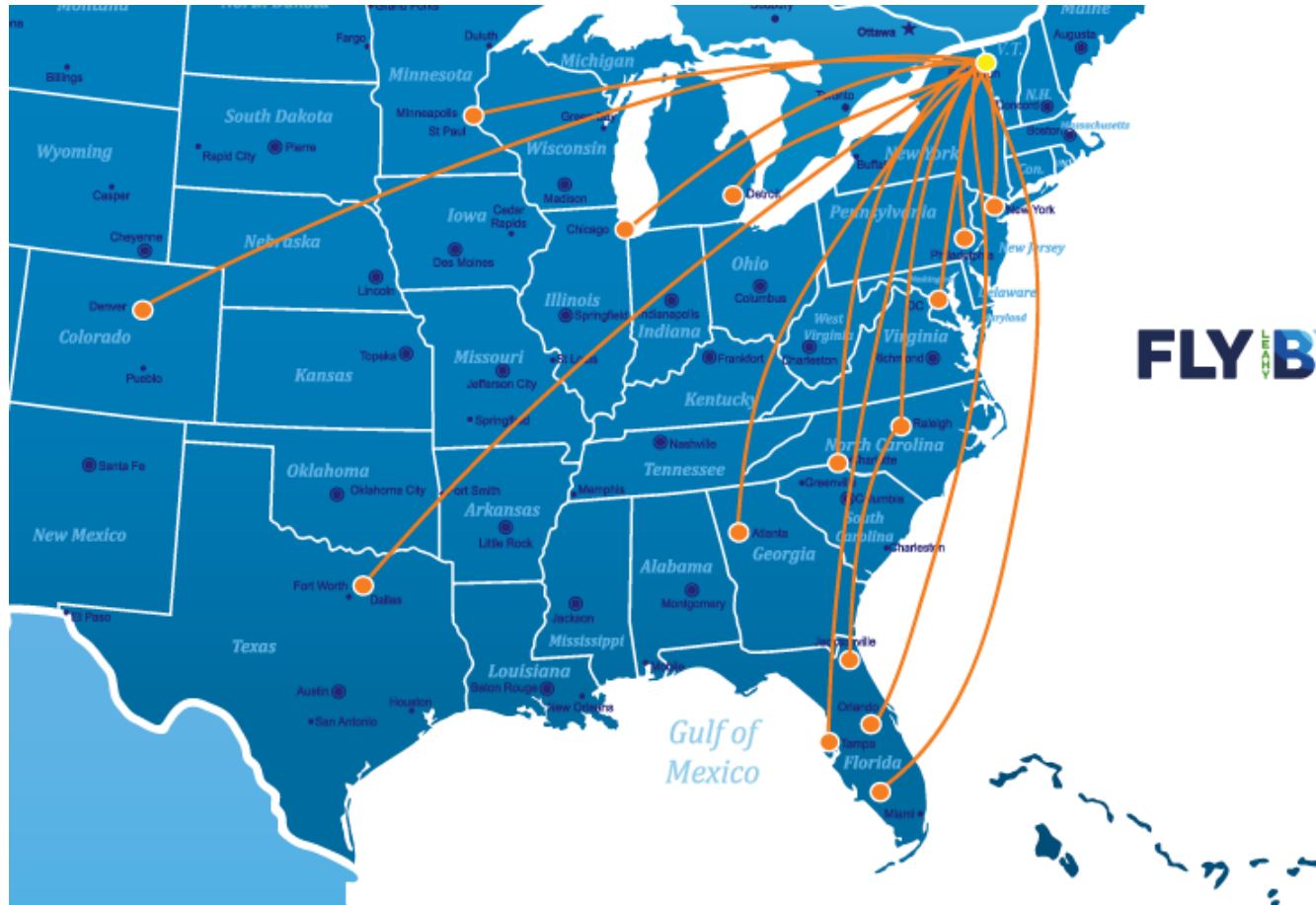
- We see 1.4 million passengers per year
- 2nd busiest airport in New England when looking at total operations
- One of the largest points of entry into Vermont
- Source of innovation (Beta) and curiosity (VFA)
- Vermont National Guard



Our Airline Partners



The most non-stop destinations dating back to 1990!



- Atlanta (ATL) via [Delta](#)
- Charlotte (CLT) via [American Airlines](#)
- Chicago (ORD) via [United](#)
- Dallas (DFW)* via [American Airlines](#)
- Detroit (DTW)* via [Delta](#)
- Denver (DEN)* via [United](#)
- Fort Myers (RSW) via [Breeze](#)
- Jacksonville (JAX)* via [Breeze](#)
- Minneapolis - St. Paul (MSP)* via [Sun Country Airlines](#) or [Delta](#)
- Newark (EWR) via [United](#)
- New York (JFK) via [Delta](#)
- New York (LGA) via [Delta](#) or [American Airlines](#)
- Orlando (MCO) via [Breeze](#) or [Frontier](#)
- Philadelphia (PHL) via [American Airlines](#)
- Raleigh-Durham (RDU) via [Breeze](#)
- Tampa (TPA) via [Breeze](#) or [Frontier](#)
- Washington DC (IAD) via [United](#)
- Washington DC (DCA) via [American Airlines](#)

*Seasonal

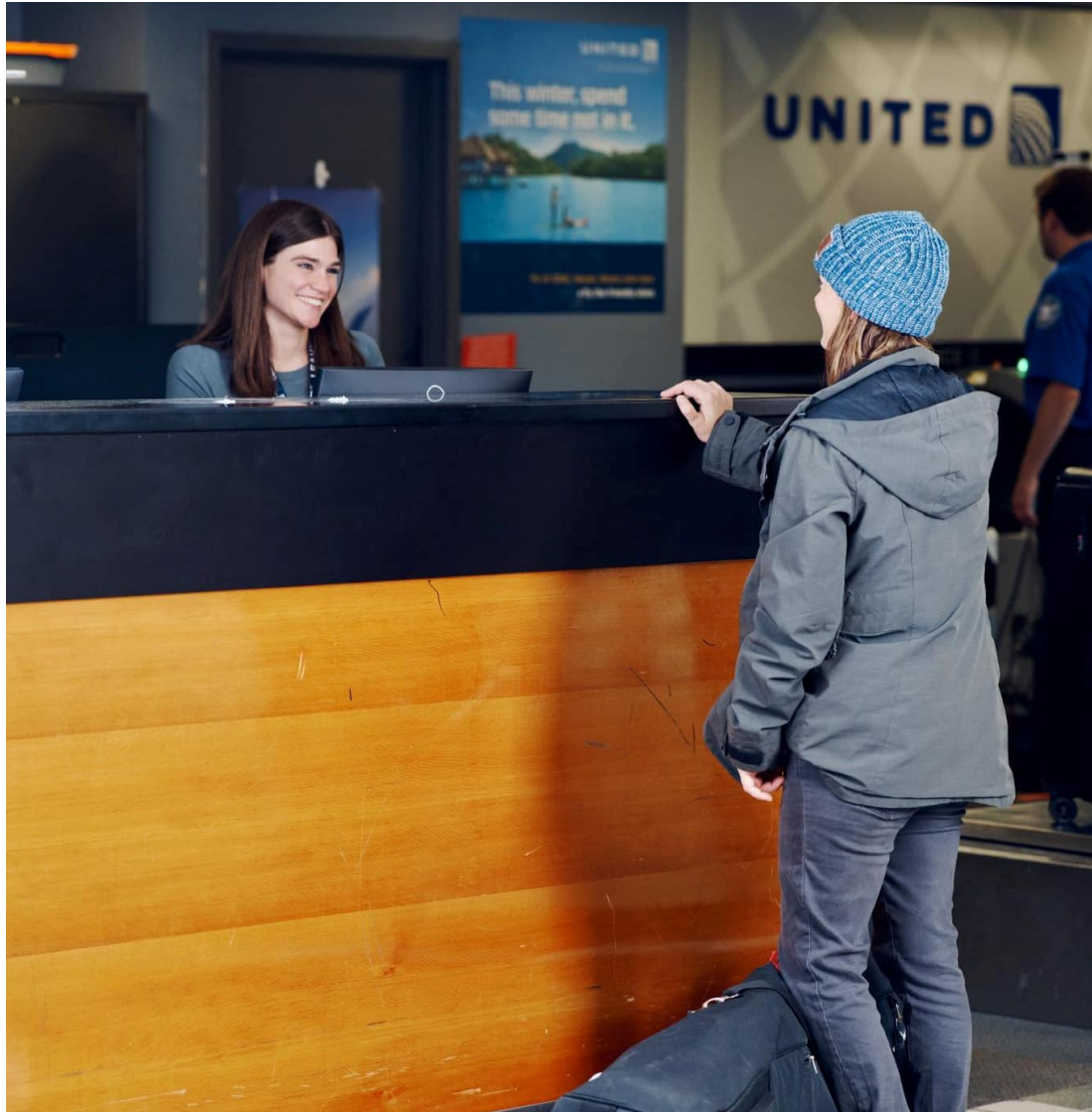
We are more than commercial services

Our current airfield tenants include:

- Aerodyme
- Beta Technologies
- Burlington Technical College
 - FedEx
 - Heritage Aviation
 - Pratt & Whitney Canada
- University of Vermont Medical Center
 - Vermont Air National Guard
 - Vermont Army National Guard
 - Vermont Flight Academy



Economic Impact*



Valuation

- The overall value of the Airport to the region is **\$1.04 billion**
- The annual economic activity generated by the airport is **\$481 million**
- The current asset value of the airport is **\$562 million**

Jobs

- The airport supports **4,935 jobs** – only 50-60 are direct employees of Leahy BTV.
- The airport provides Vermonters with **\$170.3 million** in salaries annually

Taxes

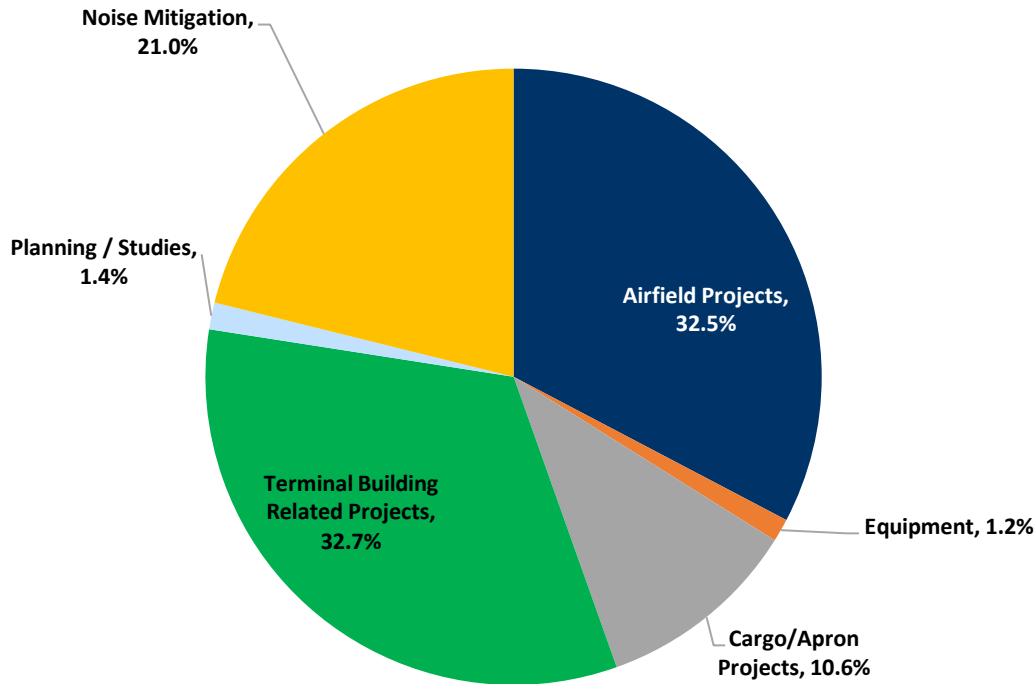
- The airport generates approximately **\$29 million** in state taxes and **\$6 million** in local taxes annually
- Estimated **\$2 million** in airport fuel revenue generated at Leahy that must be re-invested in an aviation program. Leahy BTV receives **\$500,000**

**2017 economic impact study.*

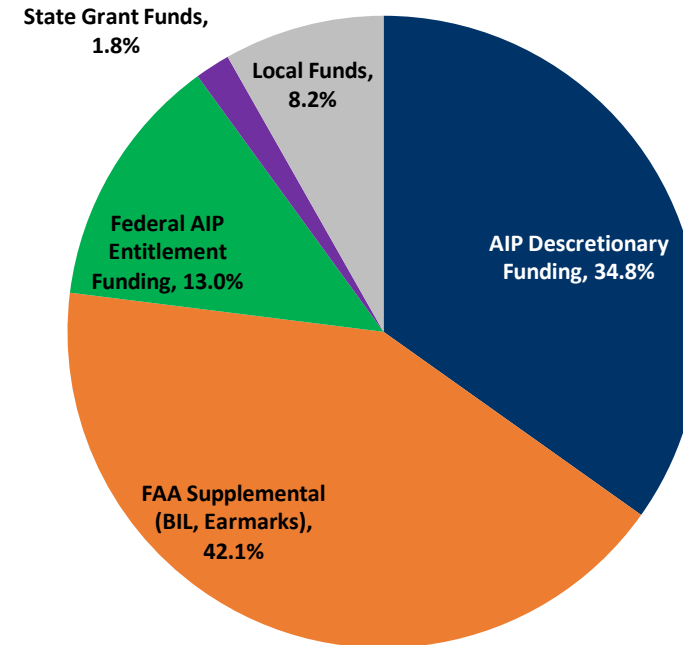
Leahy BTV Capital Development Program Overview

- The Airport Capital Development Program for FY 2024 – 2028 has an estimated cost of \$137 million of which \$125 is expected to be funded by federal or state grants—Program funding sources do not include any additional bonds

Capital Development Program Expenditures, FY2024-2028



Capital Development Program Funding Sources, FY2024-2028



Capital Development Program Projects and Funding Sources

FY 2024-2028

(000's)	TOTAL
Projects:	
Airfield Projects	\$44,483
Cargo Apron Development	14,524
Terminal Building Related Projects	44,759
Planning/Studies	1,880
Noise Mitigation	29,720
Total Project Cost	\$137,026
Funding Sources:	
Federal AIP Entitlement Funding	\$17,600
AIP Discretionary	47,092
FAA Supplemental Funding	56,974
State Grant Funds (500K annually)	2,500 ←-1.8%
Local Funds *	11,200
Total Funding Sources	\$137,026

*Local funding projected to be partially paid with PFCs

2024 was a busy year!

- Two new airlines (Breeze and Frontier) added 15 flights weekly to four destinations
- Meetings with over a dozen airlines
- Two major community events (Eclipse and Block Party)
- Dozens of guests including FAA Administrator, an Olympian, Senator Leahy, Senator Welch, and several community groups



Challenges, opportunities, and industry changes

Built for regional aircraft

Additions 25 years ago were for regional aircraft

Four gates operating at one time with 150 passengers inbound and outbound at the same time.

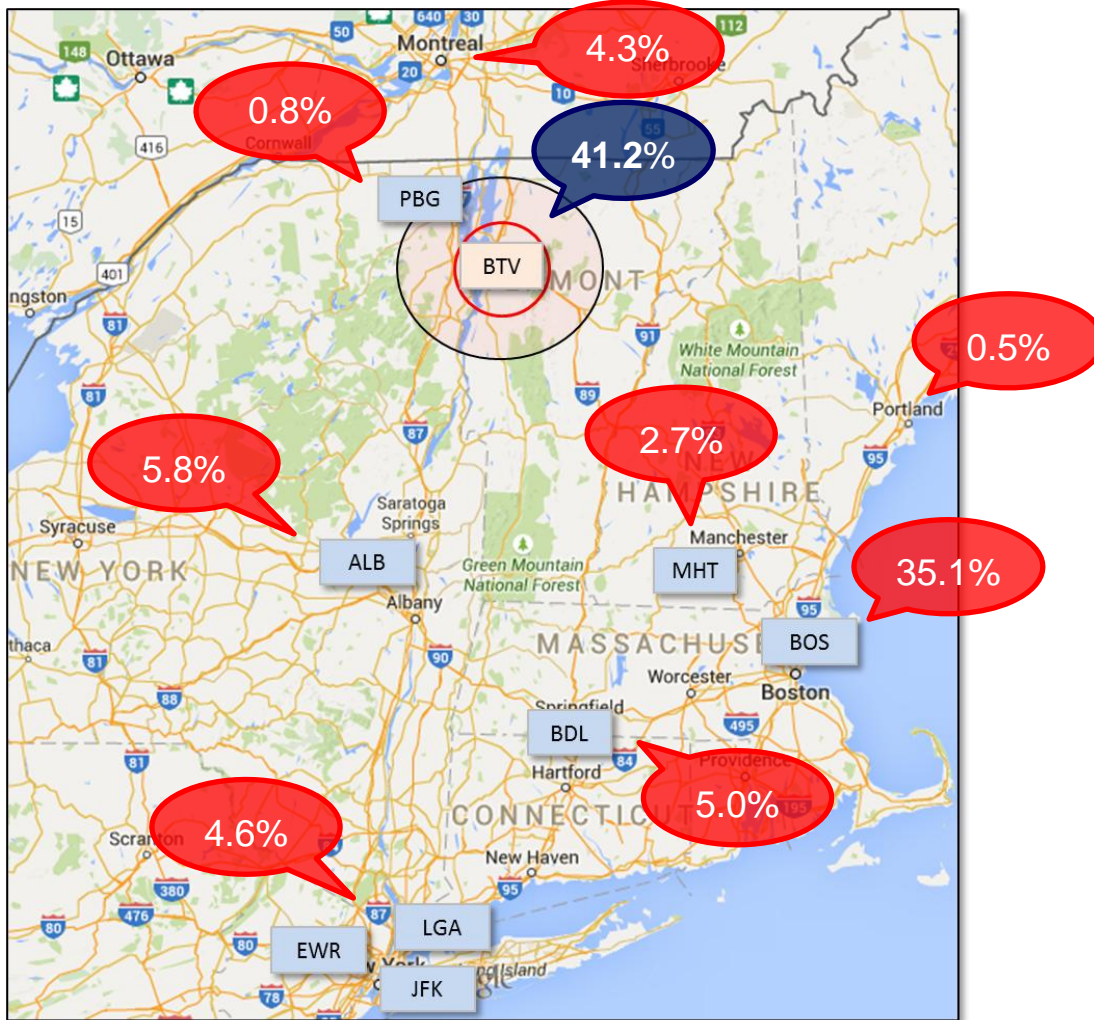
Original designed for 50 passengers per flight.

Industry demands more amenities (food, shopping, etc.)



Burlington Catchment Area Traffic

Year-End Third Quarter 2023



Leakage = opportunity to retake market

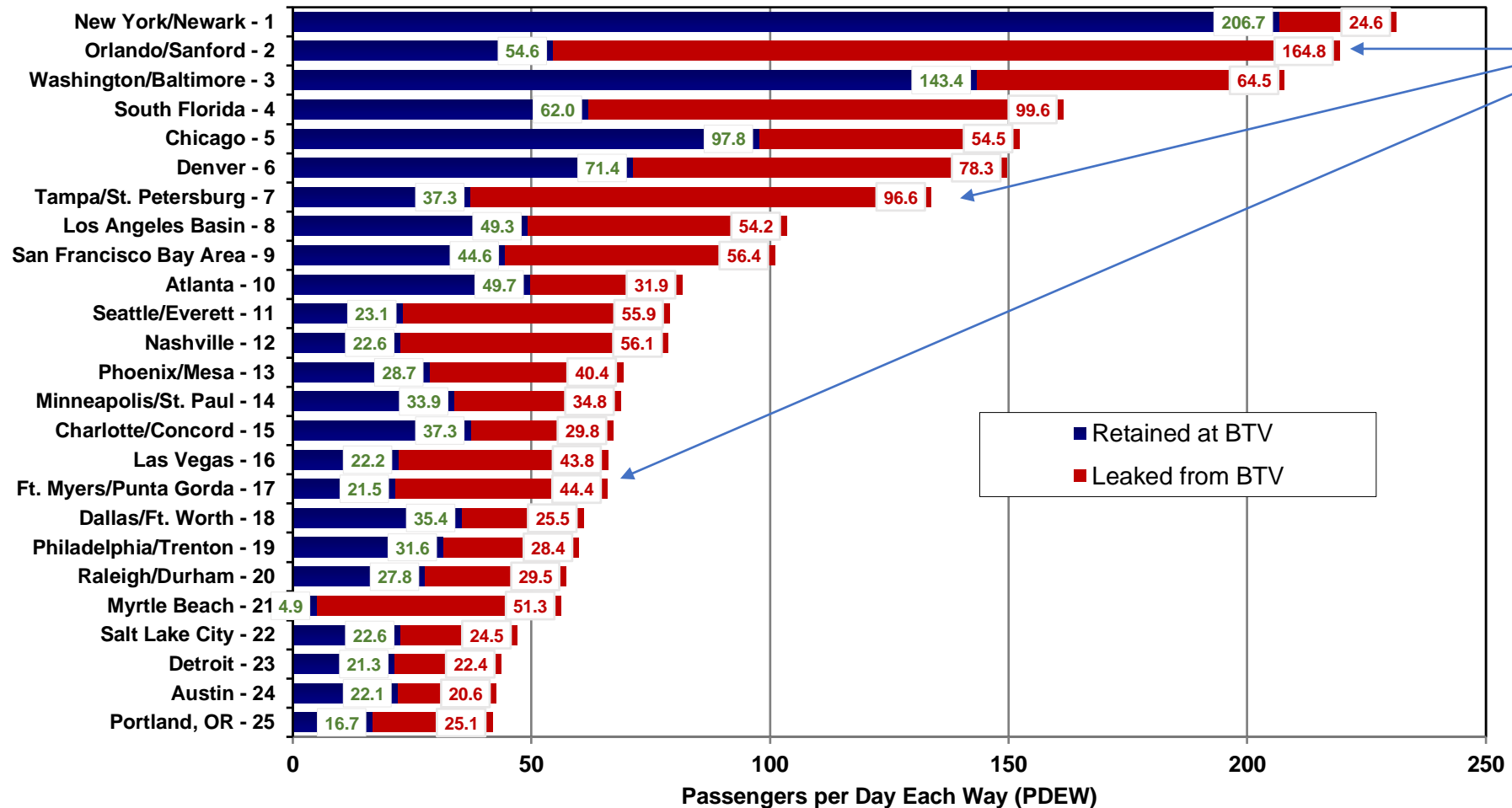
Leahy BTV to embark on campaign highlighting more options out of BTV.

Leahy BTV retained just 41.2% of the Traffic Generated in its catchment area in YE 3Q 2023; Boston captured 25.1% of the traffic.

Demand is there.

Passengers per Day Each Way (PDEW) in the 25 Largest True Markets at Burlington

Year-End Third Quarter 2023

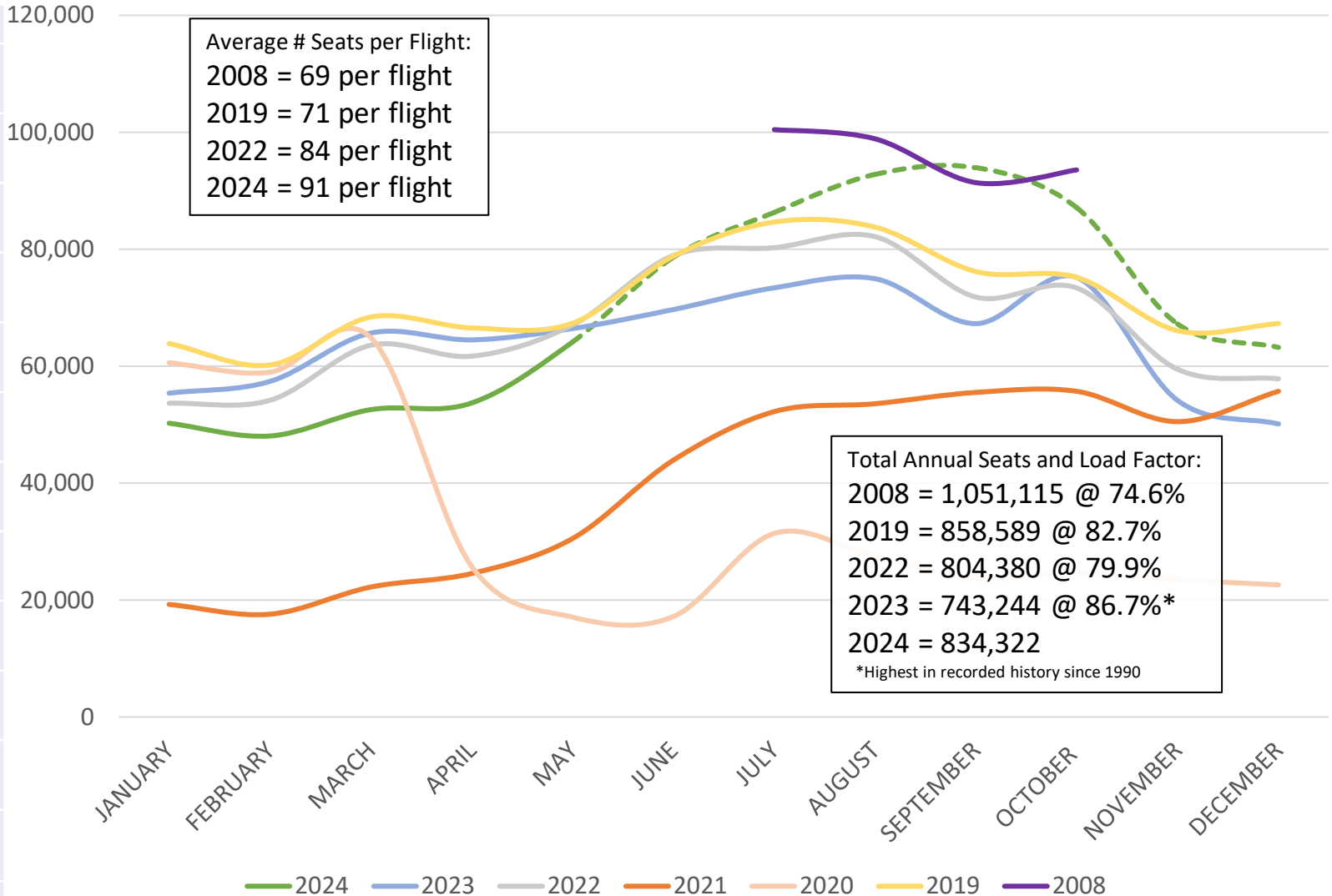


Pre-Breeze and Frontier

■ Retained at BTV
■ Leaked from BTV

Scheduled Seats; Past and Projections

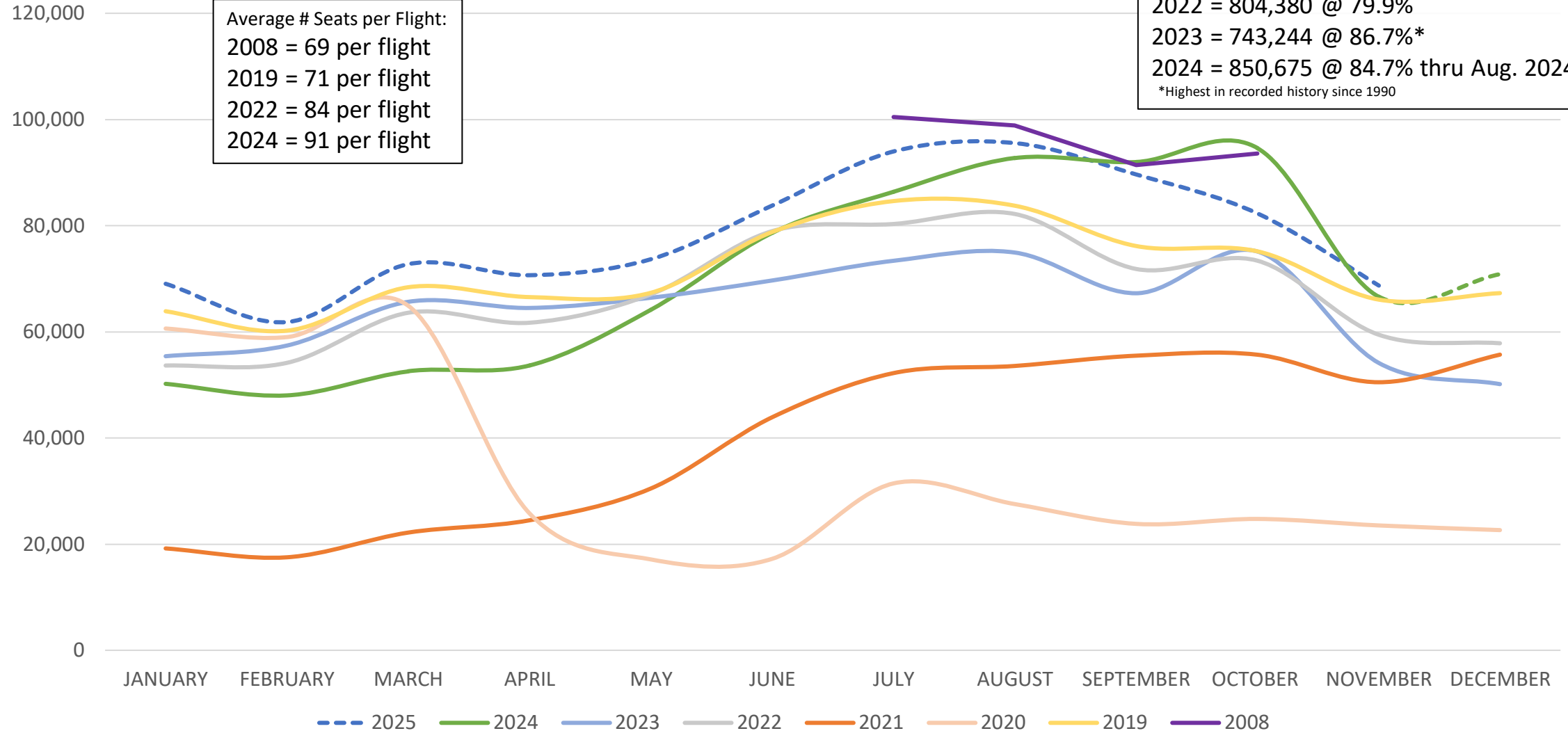
	2024	2023	2022	2021	2020	2019
JANUARY	50,245	55,401	53,680	19,243	60,623	63,905
FEBRUARY	48,066	57,412	54,187	17,571	59,004	60,240
MARCH	52,577	65,656	63,612	22,229	64,908	68,428
APRIL	53,671	64,497	61,736	24,541	25,790	66,566
MAY	64,163	66,423	67,070	30,532	17,126	67,379
JUNE	78,672	69,679	78,974	43,954	17,236	78,828
JULY	86,328	73,387	80,312	52,270	31,442	84,658
AUGUST	92,809	74,942	82,198	53,620	27,551	83,786
SEPTEMBER	93,944	67,270	71,852	55,555	23,823	76,194
OCTOBER	87,140	75,143	73,411	55,743	24,753	75,193
NOVEMBER	67,188	54,148	59,481	50,552	23,524	66,096
DECEMBER	63,218	50,137	57,867	55,753	22,648	67,316
TOTALS	838,021	774,095	804,380	481,563	398,428	858,589



Scheduled Seats; Past and Projections

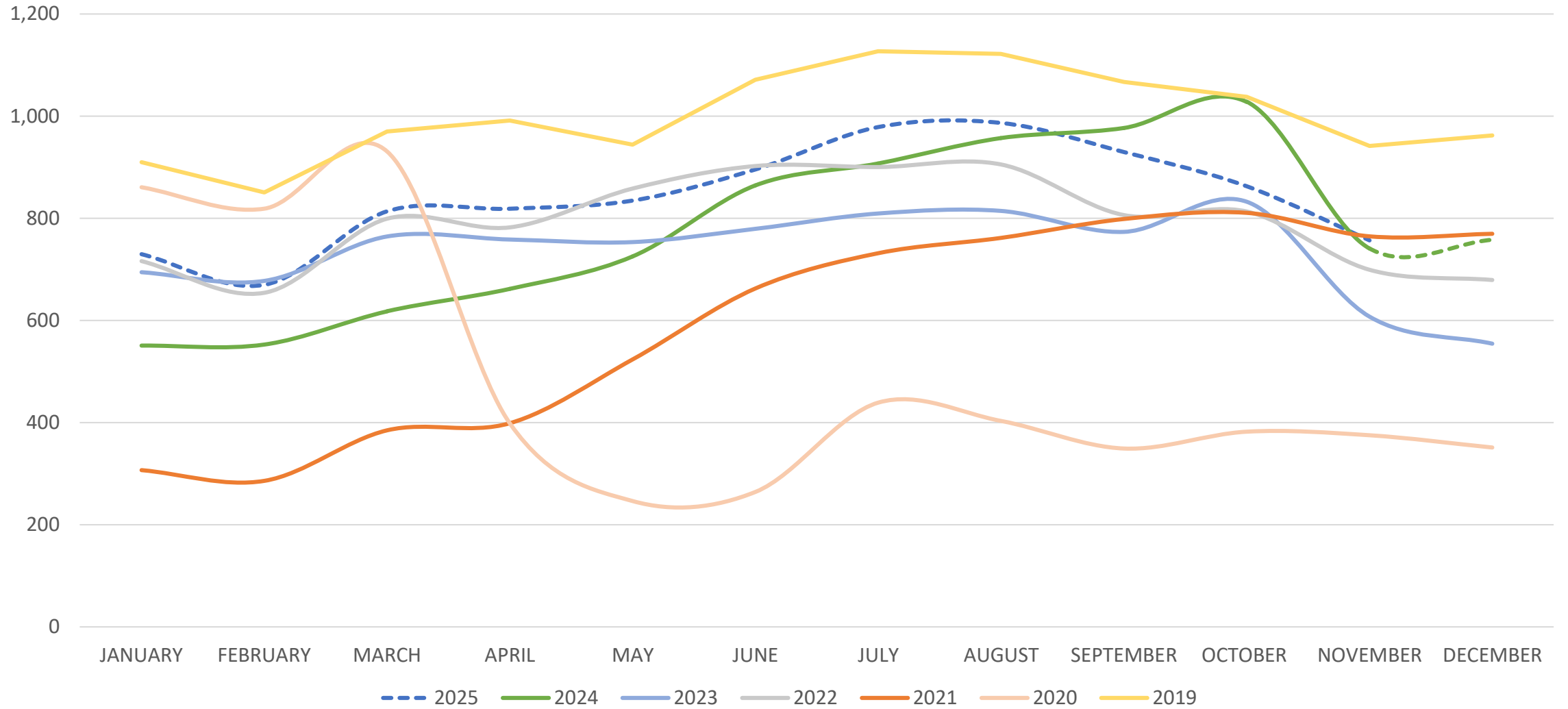
Total Annual Seats and Load Factor:
 2008 = 1,051,115 @ 74.6%
 2019 = 858,589 @ 82.7%
 2022 = 804,380 @ 79.9%
 2023 = 743,244 @ 86.7%*
 2024 = 850,675 @ 84.7% thru Aug. 2024
 *Highest in recorded history since 1990

Average # Seats per Flight:
 2008 = 69 per flight
 2019 = 71 per flight
 2022 = 84 per flight
 2024 = 91 per flight

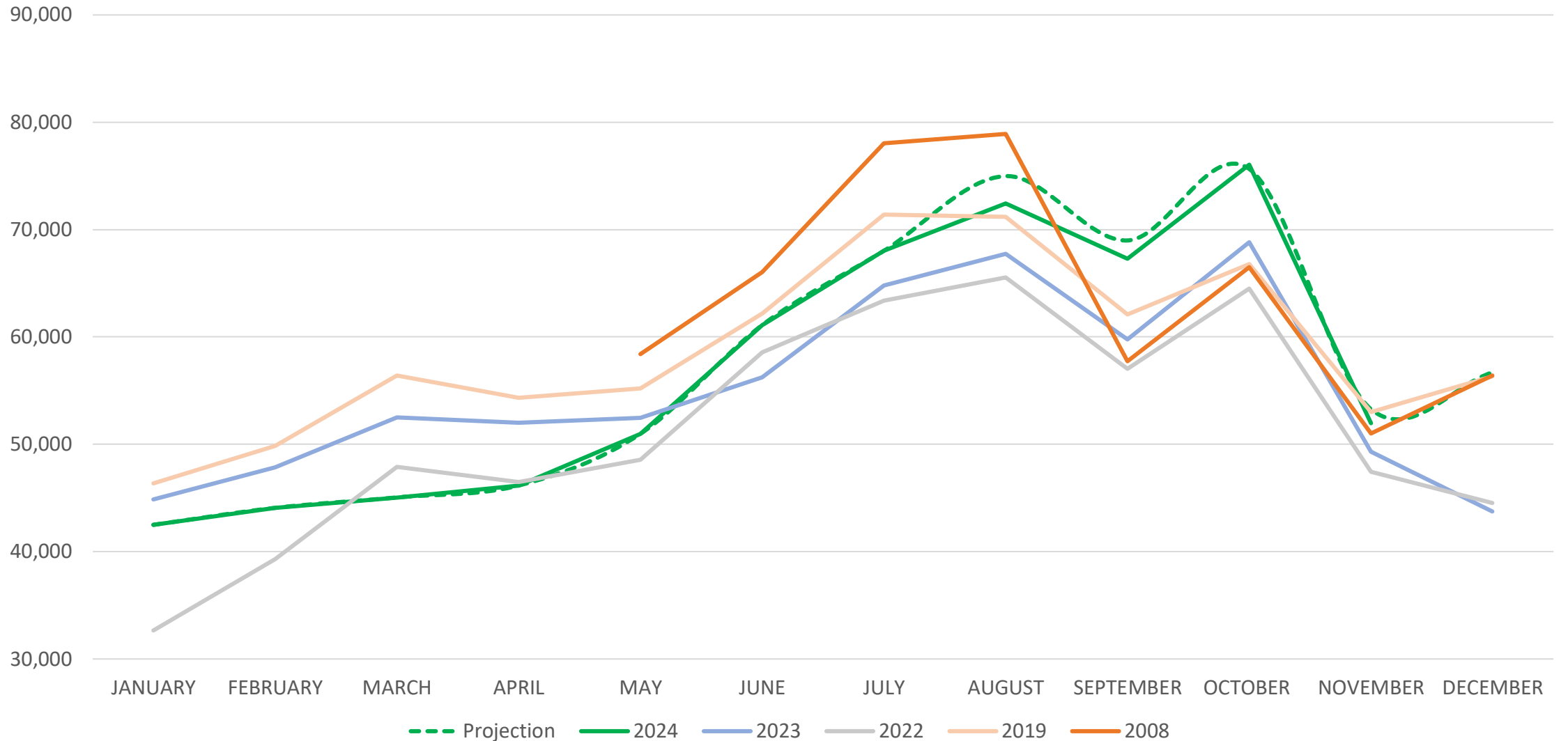


2025 projections have us near 2008 results and surpass 2019 results.

Scheduled Departures; Projections

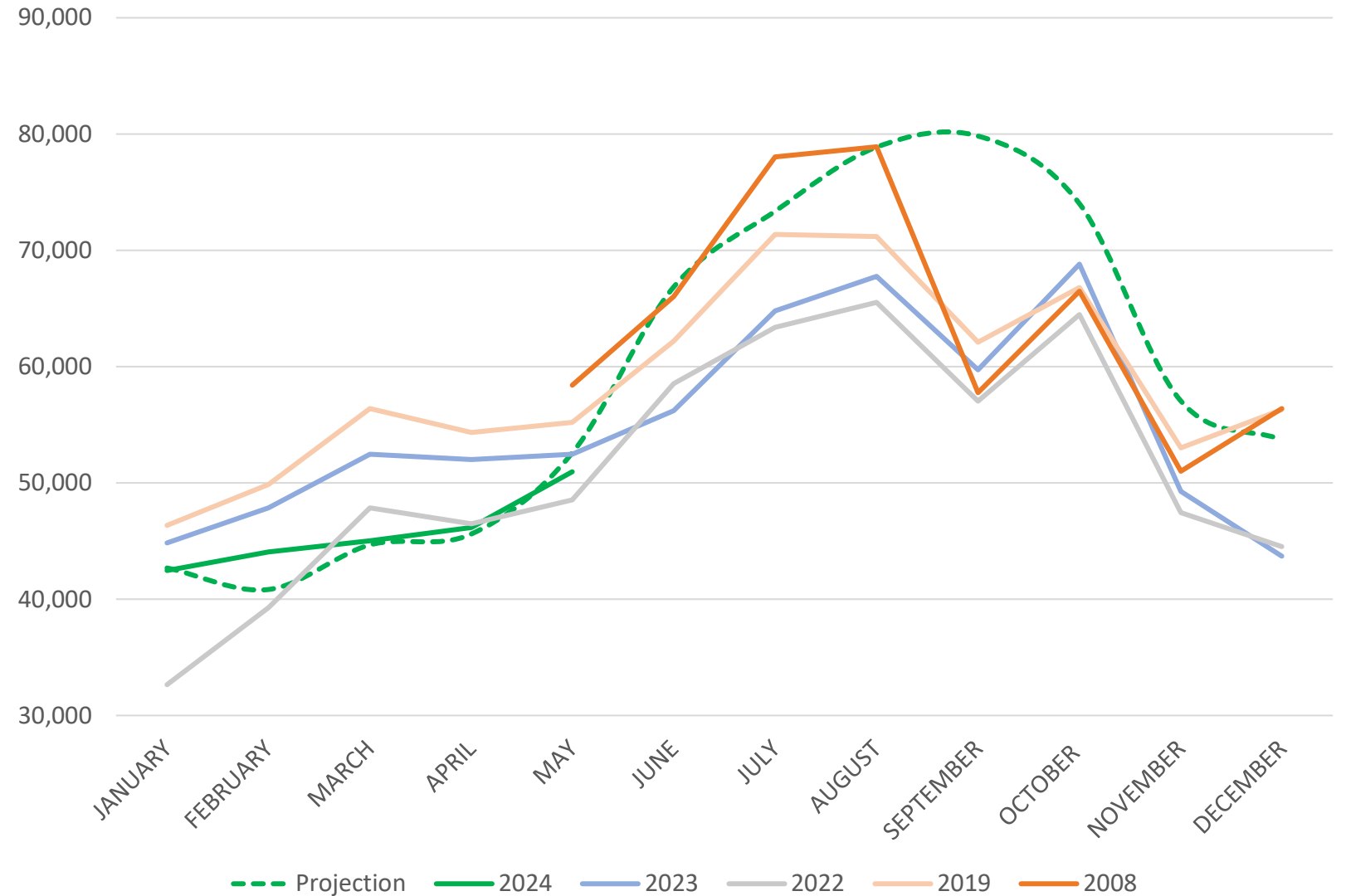


Passenger Statistics



Passenger Statistics

	2024	2023	2022	2021	2020	2019
JANUARY	42,495	44,848	32,652	8,979	50,750	46,356
FEBRUARY	44,078	47,864	39,291	11,696	49,341	49,867
MARCH	45,049	52,484	47,878	13,491	26,158	56,400
APRIL	46,158	52,018	46,485	19,563	1,448	54,340
MAY	50,972	52,471	48,564	26,325	3,911	55,209
JUNE		56,241	58,546	37,229	7,458	62,180
JULY		64,807	63,402	46,344	12,119	71,381
AUGUST		67,763	65,535	47,059	12,823	71,200
SEPTEMBER		59,751	57,037	43,072	11,292	62,116
OCTOBER		68,823	64,490	50,618	14,416	66,795
NOVEMBER		49,302	47,452	41,572	10,211	53,007
DECEMBER		43,725	44,545	42,886	9,393	56,314
TOTALS	~710,000	660,097	615,877	388,834	209,320	705,165



Project NexT

Congressionally Directed Spending Awards

BTV Project NexT \$34 Million

South Terminal Design work \$4.0 Million

New General Aviation Ramp: \$5 Million

New Jet Bridge \$2 Million

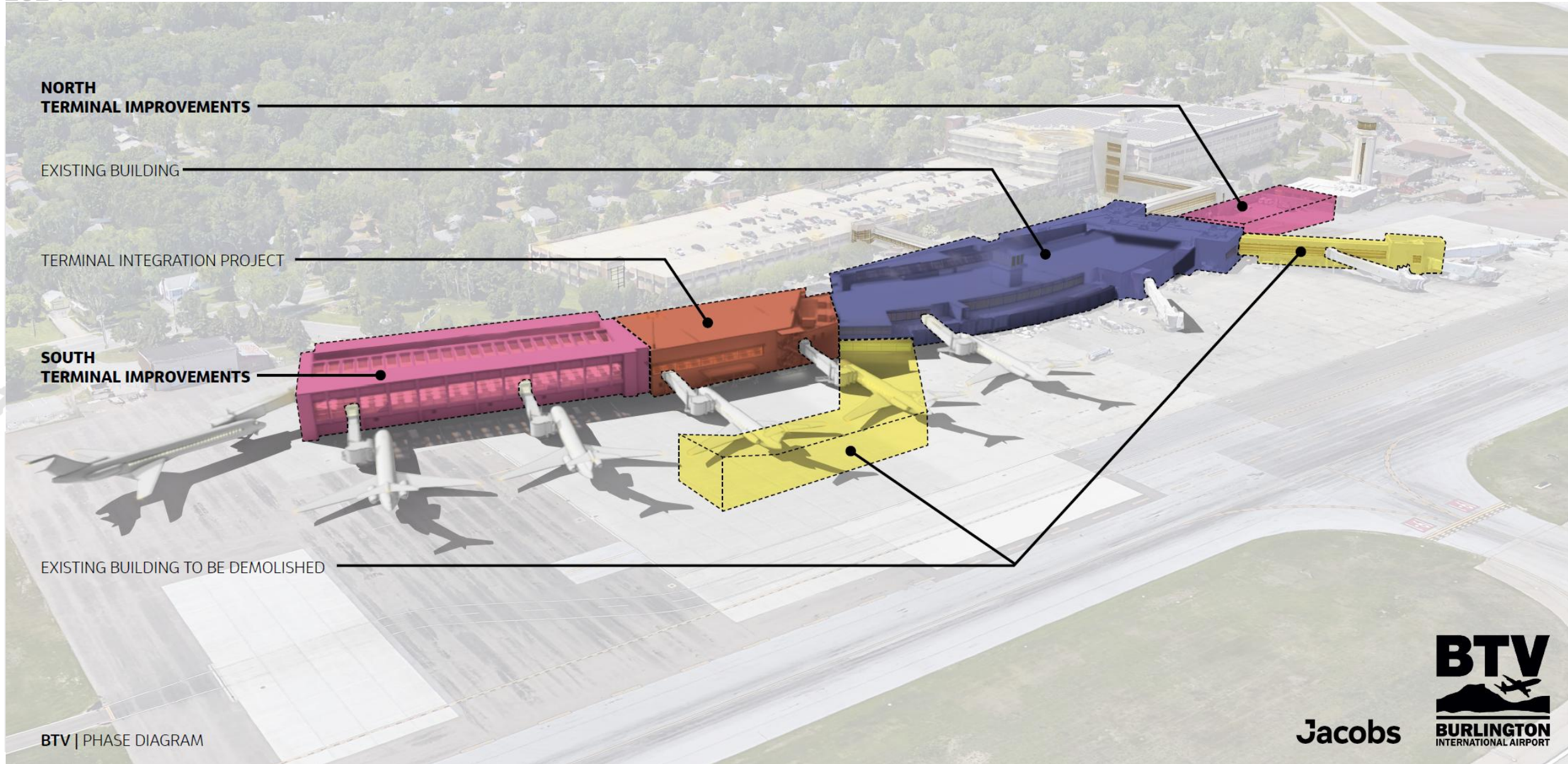
\$45 Million



Project NexT's Sustainable Focus

- Implementation of geothermal field for heating and cooling
- Employment of a mass timber framing structure and maple ceilings will reduce carbon footprint of the construction
- A Photovoltaic-ready area is a focal part of the third-floor design along with gardens and a patio viewing area available to the public





**NORTH
TERMINAL IMPROVEMENTS**

EXISTING BUILDING

TERMINAL INTEGRATION PROJECT

**SOUTH
TERMINAL IMPROVEMENTS**

EXISTING BUILDING TO BE DEMOLISHED

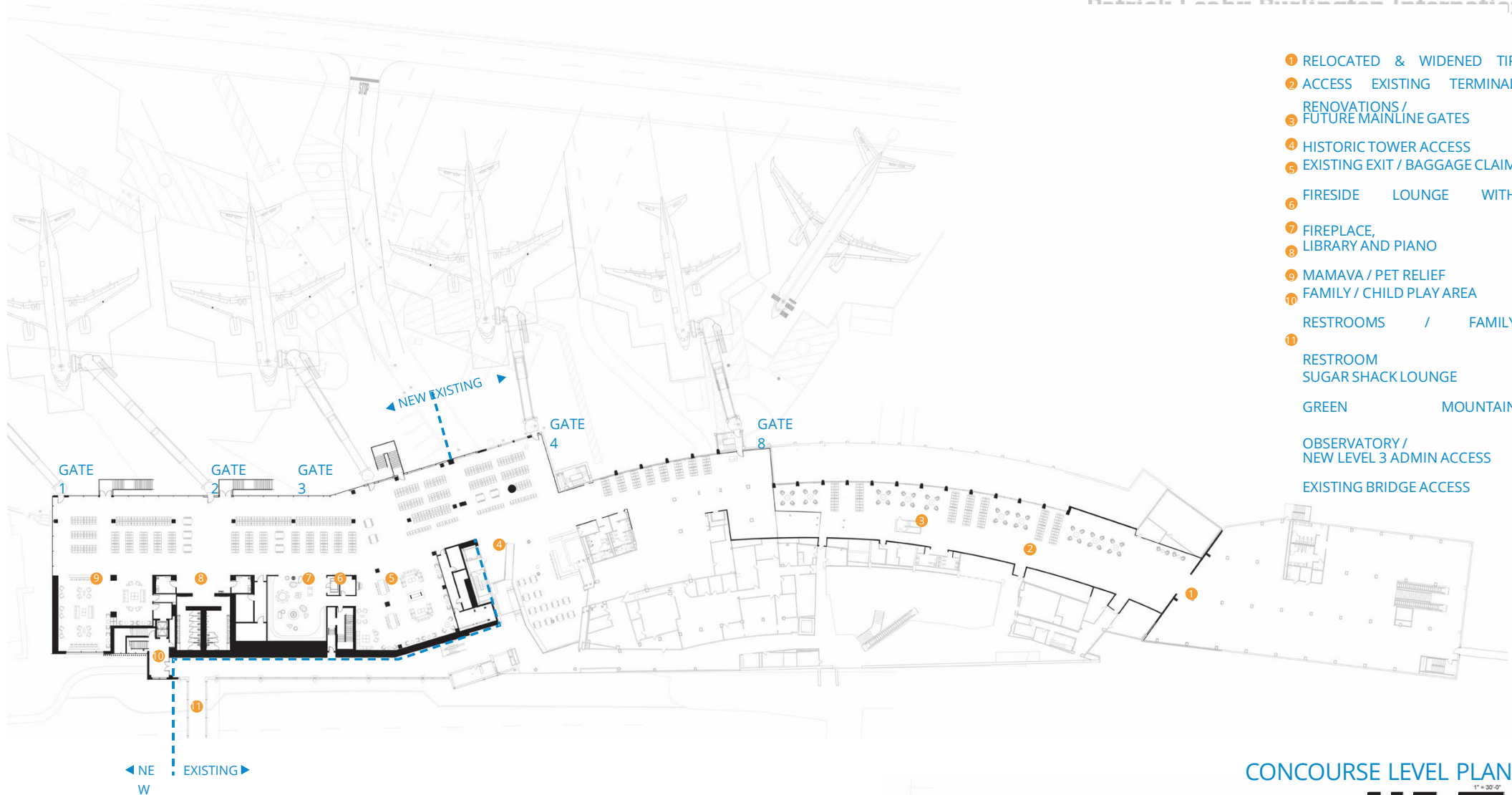
BTV | PHASE DIAGRAM

Jacobs



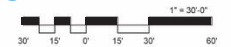






- 1 RELOCATED & WIDENED TIP
- 2 ACCESS EXISTING TERMINAL
- 3 RENOVATIONS / FUTURE MAINLINE GATES
- 4 HISTORIC TOWER ACCESS
- 5 EXISTING EXIT / BAGGAGE CLAIM
- 6 FIRESIDE LOUNGE WITH
- 7 FIREPLACE, LIBRARY AND PIANO
- 8 MAMAVA / PET RELIEF FAMILY / CHILD PLAY AREA
- 9 RESTROOMS / FAMILY
- 10 RESTROOM SUGAR SHACK LOUNGE
- 11 GREEN MOUNTAIN
- OBSERVATORY / NEW LEVEL 3 ADMIN ACCESS
- EXISTING BRIDGE ACCESS

CONCOURSE LEVEL PLAN





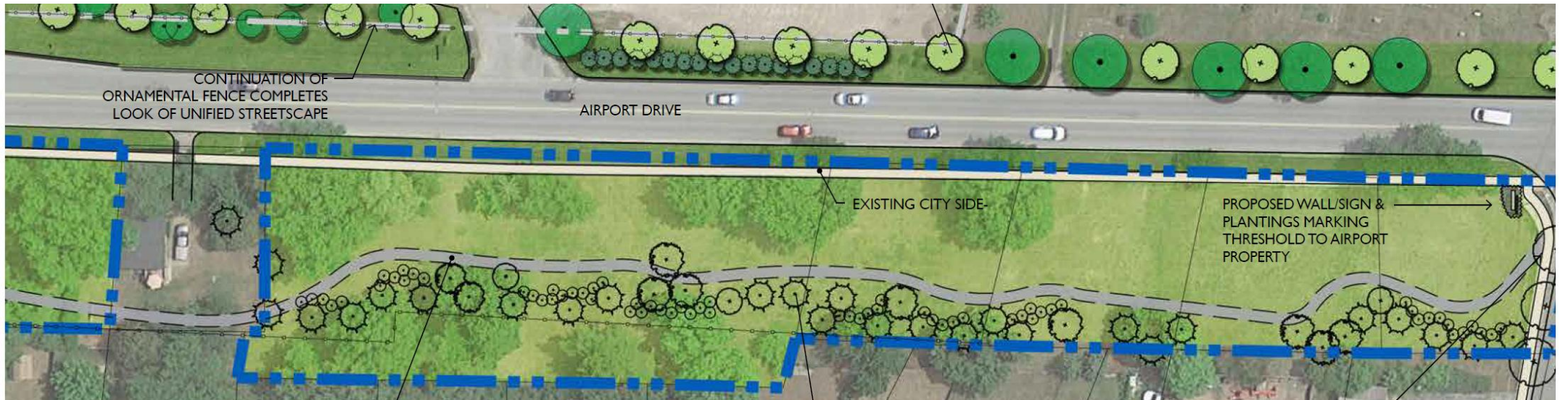




Jacobs

BTV
PATRICK LEAHY
BURLINGTON
INTERNATIONAL AIRPORT

Community Engagement





SUSTAINABILITY



airport
carbon
accreditation **level 1**

GLOBAL EFFORT TO MITIGATE AIRPORT CARBON EMISSIONS

Airport Carbon Accreditation

- A significant milestone in the airport's ongoing commitment to sustainability. By joining over 600 ACA-accredited airports worldwide, Leahy BTV has taken an important step toward creating a more environmentally responsible future.
- Leahy BTV is the second airport in New England to earn this accreditation
- As a Top 5 Small Airport in the U.S., Leahy BTV is proud to not only offer efficient and convenient travel experiences but a place where sustainability and environmental stewardship are a top priority.



Leahy BTV's Electric Vehicle Fleet is Growing!

The Airport has 3 Ford Lightning trucks, 1 Mach-E Mustang and an Electric Sweeper









What's next?

Legislative Tours

Thursday, March 6th and Friday March 7th from 10:00 AM – 2:00 PM

Tour includes stops at:

- Patrick Leahy Burlington International Airport Terminal
- Airfield maintenance operations
- Heritage Aviation
- Pratt & Whitney
- Burlington Technical School
- Vermont Flight Academy
- Beta Technologies
- Airport Rescue and Fire

Lunch included

RSVP to jbartley@btv.aero