

Introduction to the Vermont Land Trust

Tracy Zschau
Allen Karnatz

January 2025



Our purpose

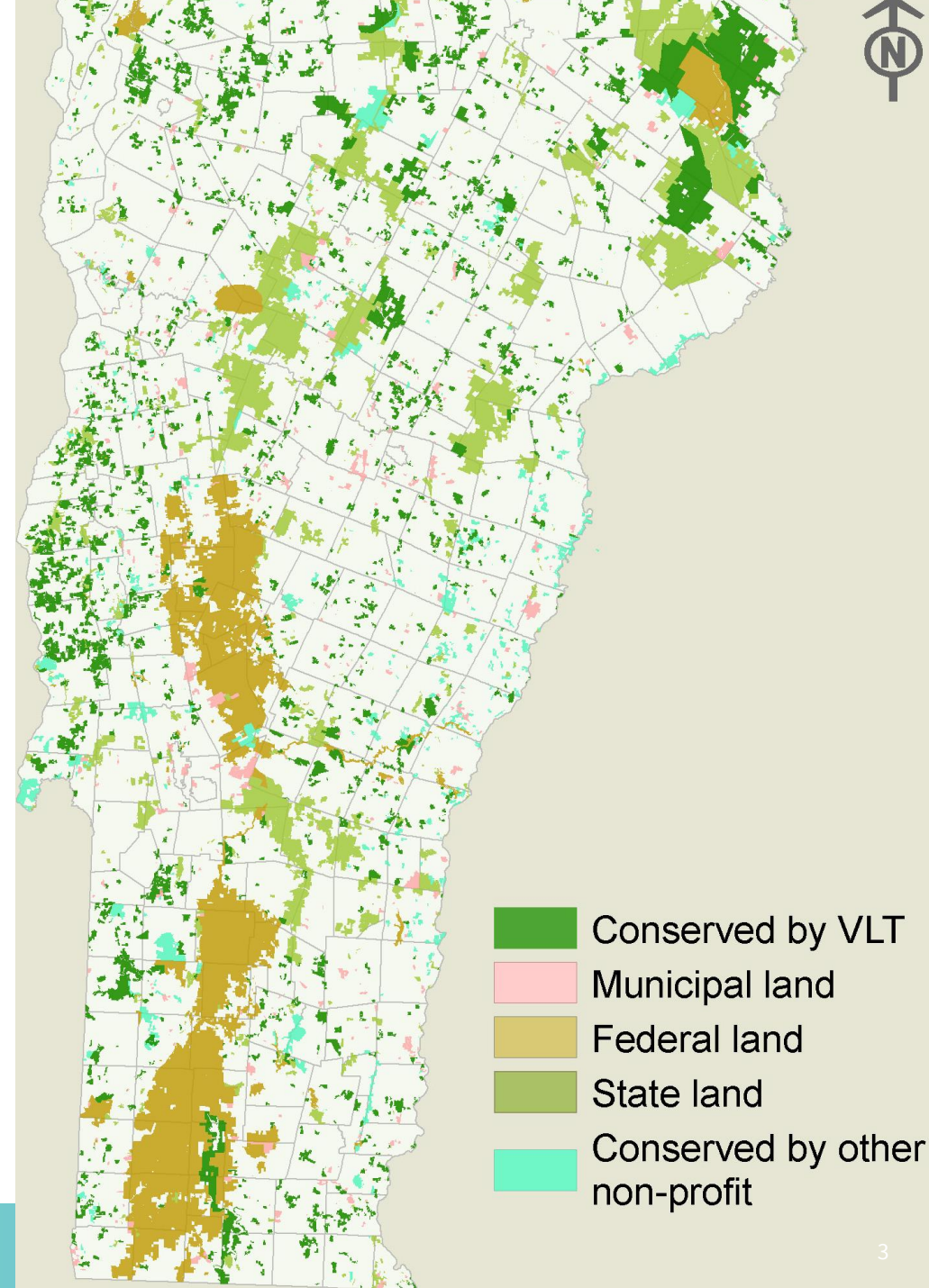
Rooted in Vermont since 1977, the Vermont Land Trust helps people protect, care for, and connect to the home we share.



Mad River Valley

About us

- Founded in 1977
- Conserved 11% of Vermont, over 647,000 acres
- Protected 1,100+ farms and 450,000 acres of forestland
- Steward 2,300 easements
- Own 44 properties
- 3,100 members
- 47 employees
- FY25 Operating Budget: \$7.8M
- 5 offices: Montpelier, Richmond, Newport, Woodstock, Brattleboro





What we do

Help people and communities

- Protect land
- Care for land
- Connect to land



How we do it

- Conservation easements
- Stewardship
- Land ownership
- Ecological restoration
- Forestry and land management
- Farmland access
- Events, storytelling, and education



Lucas Dairy Farm, 390 acres, Orwell

2024 Highlights

- 8,773 acres protected
 - 6,300+ acres of forestland
 - 2,400 acres of farmland
- Helped 7 farm families buy land
- Protected 38 miles along rivers and 248 acres of wetlands
- Planted 7,770 trees and shrubs
- Grew 15,000+ lbs. of food for people in need
- Hosted 1,000+ people at educational events



Heartwood Farm, Albany

Farmland Protection and Access

- Over 1,000 farms conserved
- 158,000 acres protected
- Over 100 successful transfers
- Hundreds of streams protected and wetlands improved

The Vermont Farm Landscape

- Increasing farmland values
- Declining dairy sector
- Farms getting bigger and smaller
- Aging farmers
- Need for improved farmworker housing
- Increasing development pressure
- Growing climate change impacts



Blue Ledge Farm, Leicester



Old Road Farm, Granville

100 Successful Transfers

Strong demand

- 80 conserved farms sold in last 5 years
- 842 farm seekers (as of January 2024)

Pipeline

- 48 farmland conservation projects (12 farmland access)
- 4 Retroactive OPAVs (all farm transfers)

Revolving loan fund

- \$15M in debt capital to buy farms

Woodlawn Farm, Pawlet and Rupert

- First conserved by Leach family 1997
- 8th generation dairy and diversified operation
- Bought and conserved two more farms in 2012
- 860 total acres
- Conservation easements supported by VHCB and NRCS



Defreest Farms Waitsfield

- Conventional dairy (herd based in Warren)
- 70 acres
- Includes riparian protections, land retirement, buffers, and public access along Mad River
- Funded by USDA, VHCB, DEC



Doyle Family Fletcher

- Transfer from the King Family Trust to the Doyles
- 180 Acres
- Diversified Farm – Chicken, Pork, Beef, Sugarbush
- Riparian Protection
- Conservation Easement purchase supported by VHCB & NRCS



Climate resilience programs

- Forestland conservation
- Overlays and water quality protections
- Wetland and ecological restoration
- Soil health
- Landowner services/education



VLT-owned land, Andover

Vermont Land Trust



UNITING LAND AND LIVES

tracy@vlt.org and allen@vlt.org