



FORESTS, PARKS & RECREATION
VERMONT



AGENCY OF NATURAL RESOURCES

FOREST MANAGEMENT ON STATE LANDS

Jim Duncan, State Lands Manager, Dept of Forests, Parks and Recreation



WELCOME

OUTLINE



- What is the Division of Forests State Lands Program
- What are state lands?
- What type of forest management happens on state lands?
- How do we plan for state land forest management?
- What else are we managing on state lands?

FROM PARCEL TO IMPLEMENTATION ON STATE LANDS



A photograph of a dense forest with tall, thin trees and a ground covered in fallen leaves. The text is overlaid on the image.

WHAT IS THE DIVISION OF FORESTS STATE LANDS PROGRAM?

WHO IS IN THE DIVISION OF FORESTS STATE LANDS PROGRAM?

- 1 State Lands Manager
- 5 Stewardship Foresters
- 10 State Lands Foresters
- 3 Outdoor Recreation Specialists
- 15 seasonal staff including Forestry Specialists, Trail Coordinators, Roving Ranger, Trail Crew Members



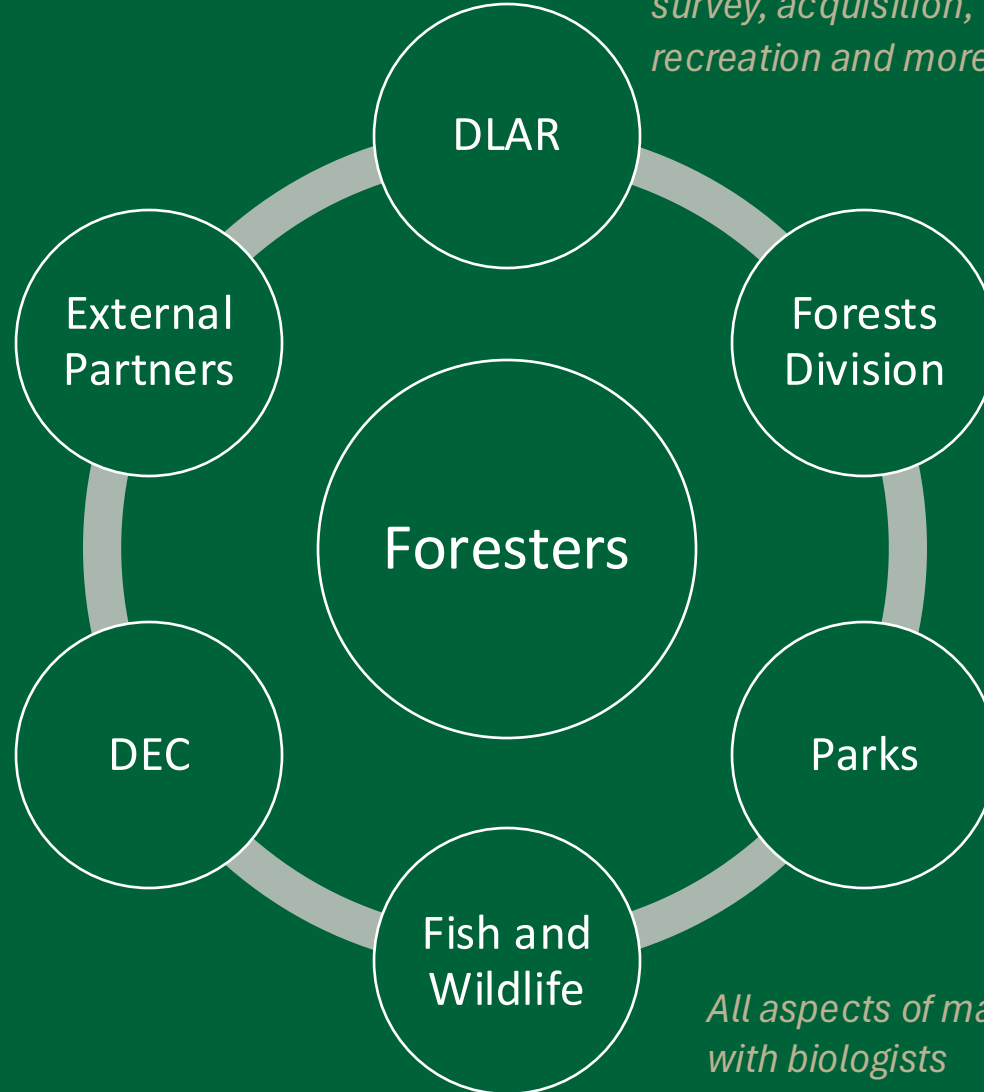
WHO IS IN THE STATE LANDS FOREST MANAGEMENT ENDEAVOR?



*Planning, lands admin,
survey, acquisition,
recreation and more*

*Communications, visitor
management,
implementation*

*Health, climate,
watershed/private, admin,
comms, economy*



*Planning, permitting,
reviews, technical assists*

*Planning, equipment
sharing, implementation*

*All aspects of management
with biologists*



WHAT ARE STATE LANDS?

AGENCY LAND OWNERSHIP

- Forests, Parks and Recreation (239,000 ac)
 - State Forests (185,000 ac)
 - State Parks (54,000 ac)
- Fish and Wildlife (135,000+ ac)
 - Wildlife Management Areas
 - Riparian Management Areas
- Environmental Conservation
 - DEC-owned dam lands



WHAT ASSETS ARE ON ANR STATE LANDS?

- 2200 miles of externally facing boundary
- 900 miles of roads
- 590 miles of trail
- Examples of 93 out of 97 natural communities in the State



A photograph of a dense forest with tall, thin trees and a ground covered in fallen leaves. The text is overlaid on the image.

**WHAT TYPE OF FOREST MANAGEMENT
HAPPENS ON STATE LANDS?**

WHAT IS “ACTIVE FOREST MANAGEMENT”?

- Timber harvests
- Invasive plant treatment
- Promoting wildlife features like food-producing trees
- Open field maintenance
- Non-timber stand management



WHY CONDUCT TIMBER HARVESTS ON STATE LAND?

- Timber harvests can be an effective method to:
 - Restore and accelerate recovery from past land clearing
 - Address human-introduced threats to forests
 - Accelerate accumulation of old forest characteristics
 - Enhance and maintain forest health and resilience
 - Sustainably produce forest products
 - Create, maintain and enhance wildlife habitats
- May be most affordable tool to accomplish these at scale
- Provide local wood products Vermonters can be proud of



Revenue never drives the proposal of a timber harvest on state lands

MANAGING FOR CLIMATE RESILIENCE

- Retain woody debris in active management areas
- Match harvesting equipment to the site
- Improve road infrastructure
- Improve forest structure and age diversity
- Manage against non-native plants, pests and pathogens



SNAPSHOT OF FOREST MANAGEMENT IN THE LAST FIVE YEARS



- 27 sales offered
- Average 200 acres of harvest per year
- Average revenue of \$148,000 per year
- 3 climate change adaptation research sites installed
- Over 200 non-commercial projects including
 - Hazard tree removal
 - Timber stand improvement
 - Mast tree release
 - Field and roadside mowing



HOW DO WE PLAN FOR STATE LAND FOREST MANAGEMENT?

Acquisition



Long-range
planning



Project
development



Project review



Implementation



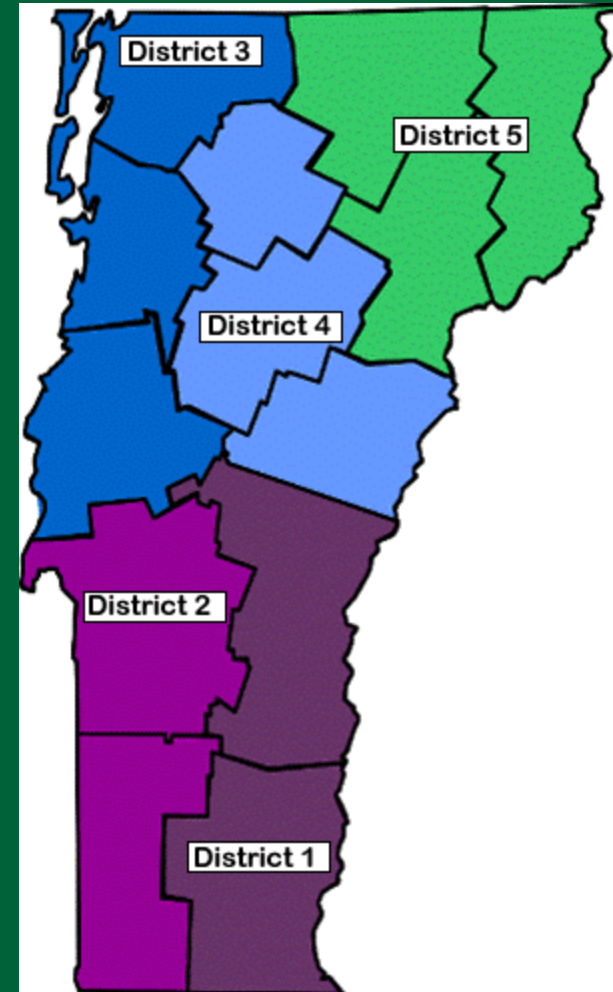
WHY DO LONG-RANGE MANAGEMENT PLANS (LRMPS)?

- Landscape-scale resource planning
- Balance multiple uses
- Understand public desires and opinion
- Provide opportunities that the public seeks consistent with missions and policies
- Establish continuity across staff



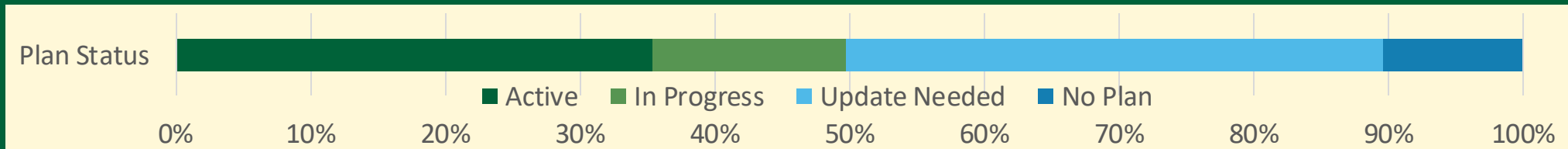
DISTRICT STEWARDSHIP TEAMS

- District Stewardship Teams
 - 10-12 natural resource experts representing the three departments
 - Wildlife biologists, foresters, recreation specialists, ecologists, watershed planner, fisheries biologist
 - Responsibilities:
 - Develop management plans
 - Manage ANR-owned land
 - Respond to proposals for use of state lands
 - Evaluate proposed acquisitions



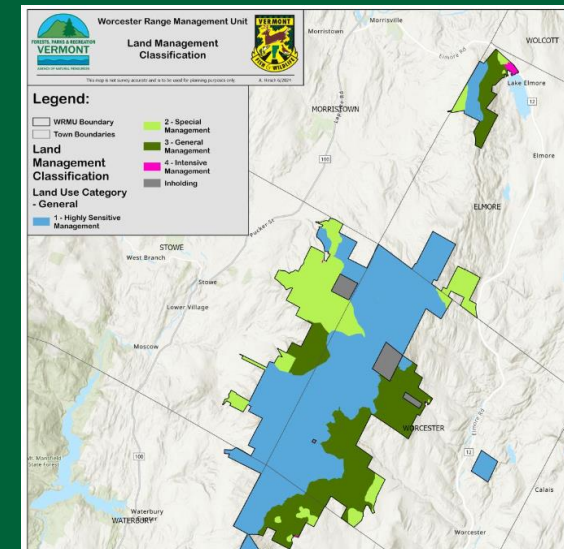
DEVELOPING AN LRMP

- Resource assessments
- Public scoping
- Draft management plan
- Public comment
- Evaluate comments
- Revised management plan
- Signature by Agency leadership



LAND MANAGEMENT CLASSIFICATIONS

- Highly Sensitive Management
UNCOMMON or **OUTSTANDING** resources
 Protection of those resources is the *primary* management consideration
- Special Management
UNIQUE or **SPECIAL** resources
 Protection or enhancement is an *important* management consideration
- General Management
 Areas that can support a variety of uses
 Focus on sustainable use of resources and minimizing conflicts
- Intensive Management
 Areas characterized by high levels of human activity



GOALS OF FOREST MANAGEMENT IN LRMP'S

- Promoting healthy, diverse forests
- Addressing climate change
- Managing invasive plants, pests and diseases
- Providing forest products
- Supporting diverse plant and wildlife habitat



Acquisition



Long-range
planning



Project
development



Project review



Implementation



ANNUAL STEWARDSHIP PLANS

- What, where and how of the upcoming year of work on State Lands
- Reviewed and approved by:
 - District Stewardship Teams
 - ANR Lands Team
 - Permitting and resource experts



TIMBER HARVEST REVIEW STEPS

Detailed resource inventory and review



Pre-sale inventory



Ecological review



Bat review



Historic Resources
Review



Other reviews

Prescription development and approval

Existing
conditions

Long-term
goals

Short-term
goals

Marking
standard

Operations

Prospectus development and approval

Species and
volumes

Operational
requirements

Deductions

Acquisition



Long-range
planning



Project
development



Project review

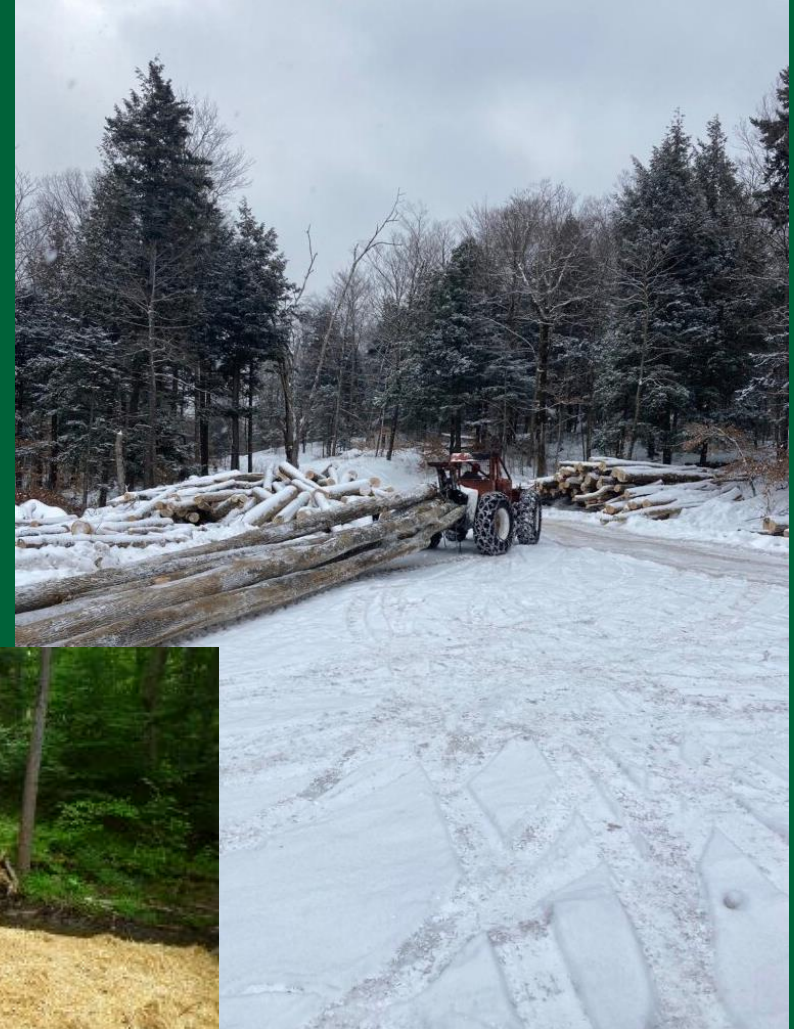


Implementation



EXECUTING A TIMBER HARVEST

- Showing and award of contract
- Oversight of operations
- Closeout and reporting
- Reinvestment of revenue



Treating phragmites
at Alburgh Dunes



Restoring steps at
fire tower





**WHAT ELSE ARE WE MANAGING ON
STATE LANDS?**

RECREATION AND HISTORIC FEATURES

- A range of recreation across seasons
- Maintaining existing resources and responding to requests
- Securing and documenting history



WATER QUALITY AND WILDLIFE HABITAT

- Creating and maintaining wildlife habitat
- Restoring stream corridors



ROADS AND PARKING AREAS

- Maintaining access for the public and land managers
- Upgrading roads to reduce water pollution
- Providing parking for people accessing state lands





CAMP
PLYMOUTH
STATE PARK
GROUP CAMPING & PICNICKING



THANK YOU
