



An Equine Industry Overview related to Bill H-273

March, 2025

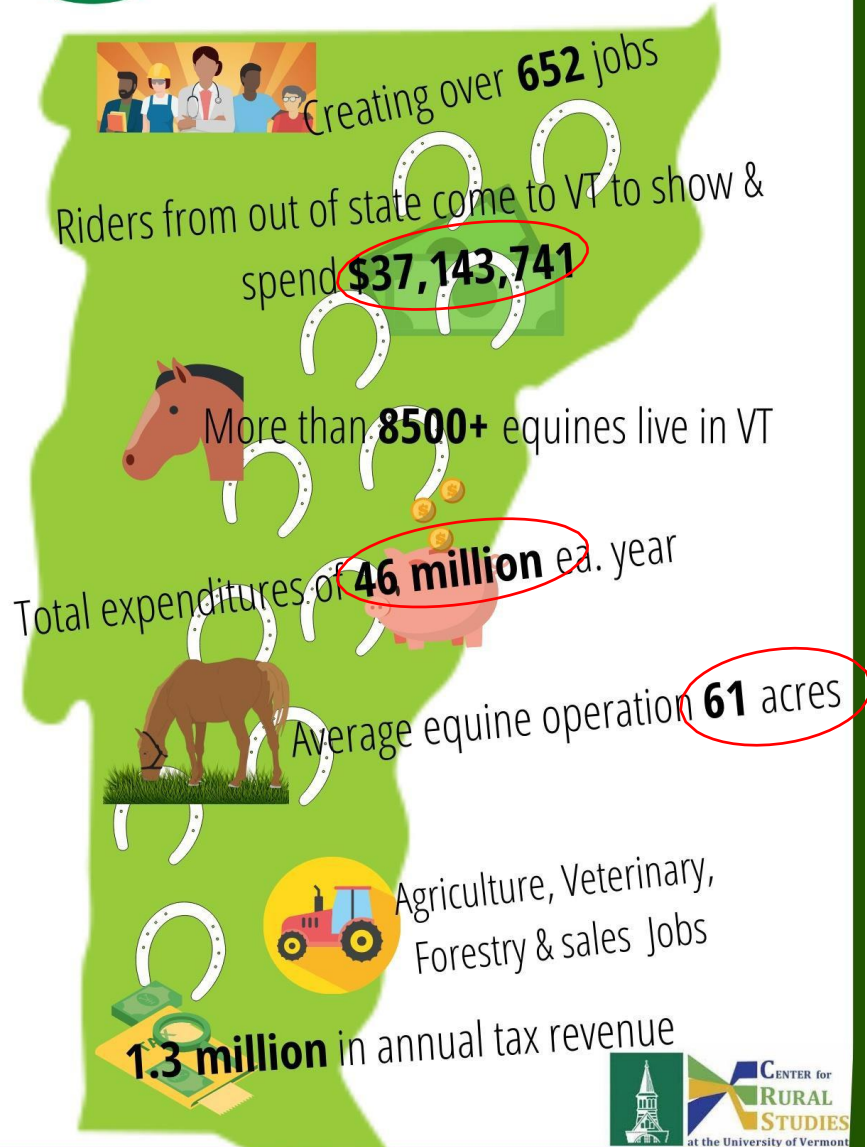
Reference Material

- 2025 Phone survey Vermont Horse Council Equine Farms
- 2022 USDA National Agricultural Statistics Service (NASS) Equine Brief Provided by UVM Center for Rural Studies
- 2018/2019 Vermont Horse Council Economic Impact Study





Economic Impact Study



- **700** responses

- 28% of 700 respondents (191 people) indicated they own, operate or earned income from equine businesses in 2019
- 51% of those (91 people) have a registered trade name, LLC or corporation.

- **2,334** equines

- 27% of the estimated 8500 equines in the state - based on extrapolated data



Equine Industry Overview

TABLE 4: ANNUAL EQUINE MAINTENANCE EXPENDITURES

	Percent of respondents answering	Mean Expenditure per 1 equine	Total Direct Spending 8,500 Equine	Total Direct Spending 10,000 Equine
Purchase of Equine in VT	7.46	\$3,197	\$2,027,547	\$2,385,349
Lease Payments for Equine in VT	2.86	\$1,175	\$285,357	\$335,714
Boarding in VT	28.10	\$2,973	\$7,099,121	\$8,351,907
Training, Lessons, and Coaching in VT	33.17	\$966	\$2,724,663	\$3,205,486
Competition and Event Entry Fees in VT	23.02	\$362	\$708,772	\$833,849
Feed in VT	53.33	\$1,638	\$7,426,388	\$8,736,927
Bedding in VT	39.68	\$405	\$1,364,894	\$1,605,757
Health in VT	63.97	\$1,090	\$5,925,243	\$6,970,874
Supplies in VT	55.56	\$424	\$2,000,348	\$2,353,350
Farrier in VT	64.29	\$632	\$3,455,653	\$4,065,474
Breeding in VT*	0.16	\$650	\$8,770	\$10,317
Total		\$12,862	\$33,017,914	\$38,844,687

Equine Contribution to Vermont's Landscape

- The average acreage 61 acres; median acreage is 23.5 acres
- 16% primary function is as a boarding, training, or riding facility
- 17.5% reported some portion of their land is enrolled in land preservation programs or land trusts.
- 29% reported some portion of their equine operation lands were enrolled in Current Use.



Potential

Equine Contribution to Vermont's Landscape

When asked, "would enroll if the Use Value Appraisal Program ("Current Use") expanded to include acreage dedicated to equine operations?"

47% responded in the affirmative



Equine Contribution to Vermont's Landscape

TABLE 13: PRIMARY USE OF EQUINE PROPERTY

For the total acres reported previously, what do you consider to have been the primary function of the operation in 2019?	Frequency	Percent
A place to keep horses, ponies, or other equine for personal use	231	69.6
Boarding, training, or riding facility (including recreational places)	53	16.0
Farm or Ranch (Dairy, Beef, Vegetable, etc.)	25	7.5
Other	11	3.3
Equine-assisted therapy facility	6	1.8
A breeding service place (breeding operation)	4	1.2
Equine rescue/sanctuary	2	0.6
Total	332	100

2025 Phone Survey - Equine Contribution to Vermont's Landscape

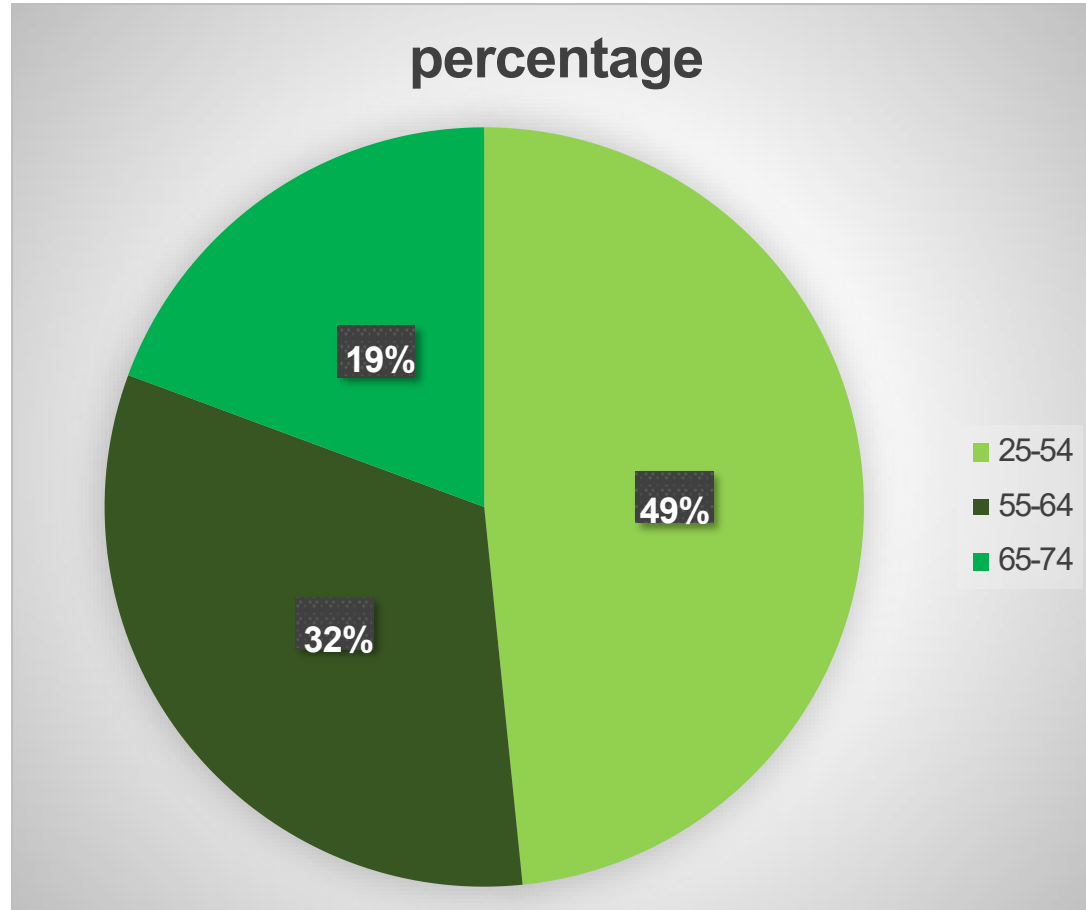
	TOTALS
# Surveyed	45
TOTAL Acreage	3869.5
Acreage in Hay/Pasture	1702
# Already in Current Use	14
# would apply in Current Use	Only 2 of 36 said NO; 1 said undecided
# Buildings	155
% Income from Equine (Average)	56.1%
# Horses (Average)	20
Hay Consumption- Square bale	93,100
Round bales	1215



Equine Industry Business Concerns

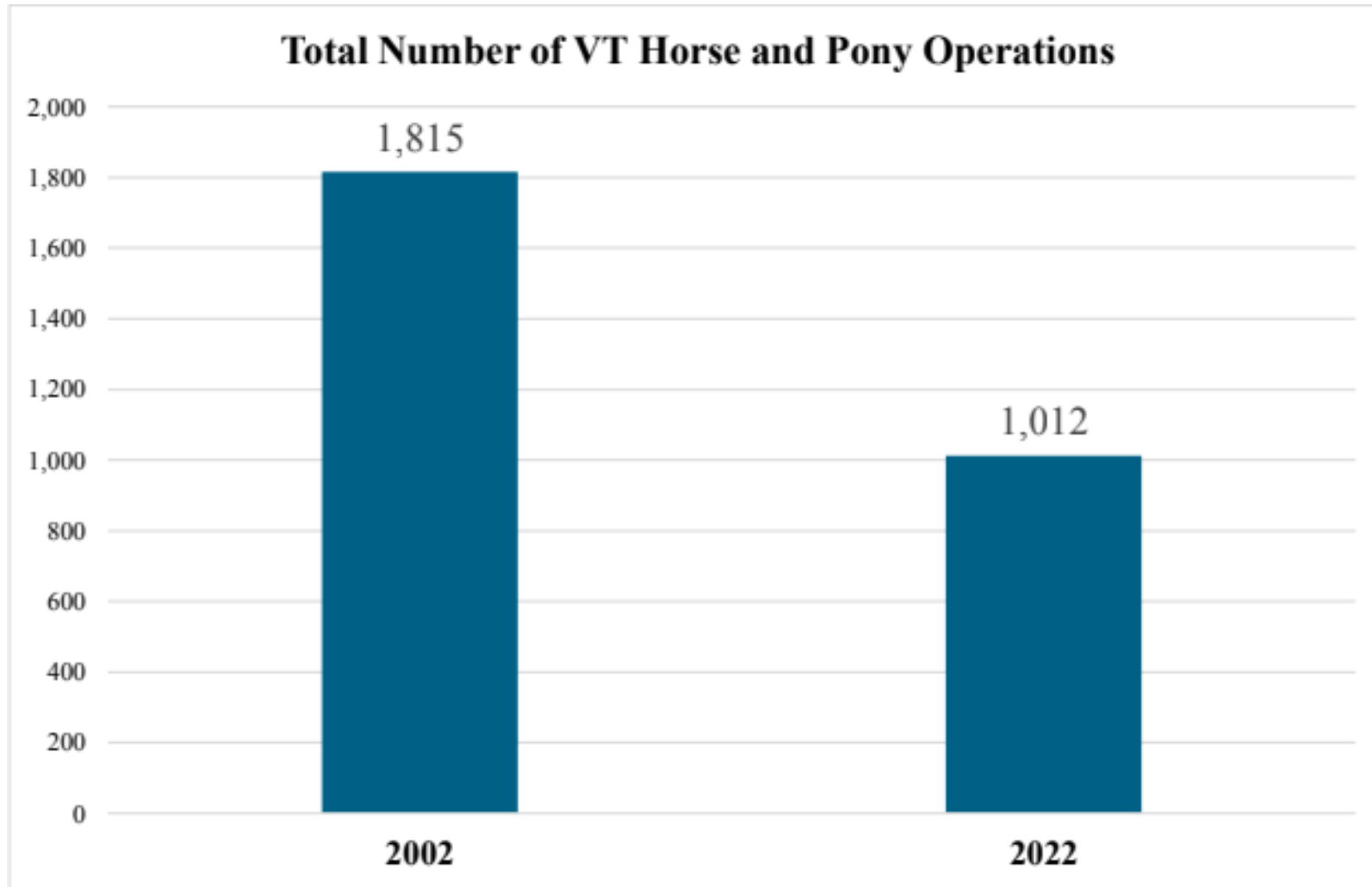
Please indicate how much of a concern each item was for you in 2019	Extreme Concern	Moderate Concern	Slight Concern	Somewhat Of A Concern	Not At All A Concern	N/A	Total
Taxes	35.9	20.5	7.7	12.8	16.7	6.4	100.0
Liability	19.5	19.5	11.7	22.1	19.5	7.8	100.0
Insurance/Workers Compensation	16.9	10.4	7.8	7.8	41.6	15.6	100.0
Hiring /Keeping Qualified Help	12.8	14.1	12.8	6.4	33.3	20.5	100.0
Regulations Affecting Farm Operation	10.4	13.0	13.0	18.2	36.4	9.1	100.0
Extreme Weather Events	8.0	26.7	28.0	20.0	16	1.3	100.0
Trespassing and Vandalism	6.5	15.6	23.4	6.5	40.3	7.8	100.0
Marketing Your Farm Operation	5.3	10.5	13.2	9.2	44.7	17.1	100.0
Availability of Veterinary & Farrier Services	5.1	20.3	19.0	12.7	41.8	1.3	100.0
Best Management Practices	4.1	14.9	23.0	13.5	37.8	6.8	100.0
Neighbor Complaints Concerning Farming Operations	4.1	6.8	12.2	6.8	58.1	12.2	100.0
Availability of Quality Feed/Hay	3.8	15.2	27.8	16.5	31.6	5.1	100.0
Availability of Machinery & Parts	1.3	7.6	20.3	11.4	48.1	11.4	100.0
Availability of Technical Assistance	1.3	7.8	27.3	10.4	45.5	7.8	100.0

Respondent Demographics



- 78% have lived in VT 16 or more years.
- Predominantly female
- 17% of respondents board in a commercial facility

Vermont Equine Farm Decline



Thank you

Heidi Krantz

equinesummit@vthorsecouncil.org

(802) 343-3104 cell; (802) 586-7559 home

https://vthorsecouncil.org/wp-content/uploads/2023/06/VHC_EquineOwnership_Report_Final_11302020.pdf

