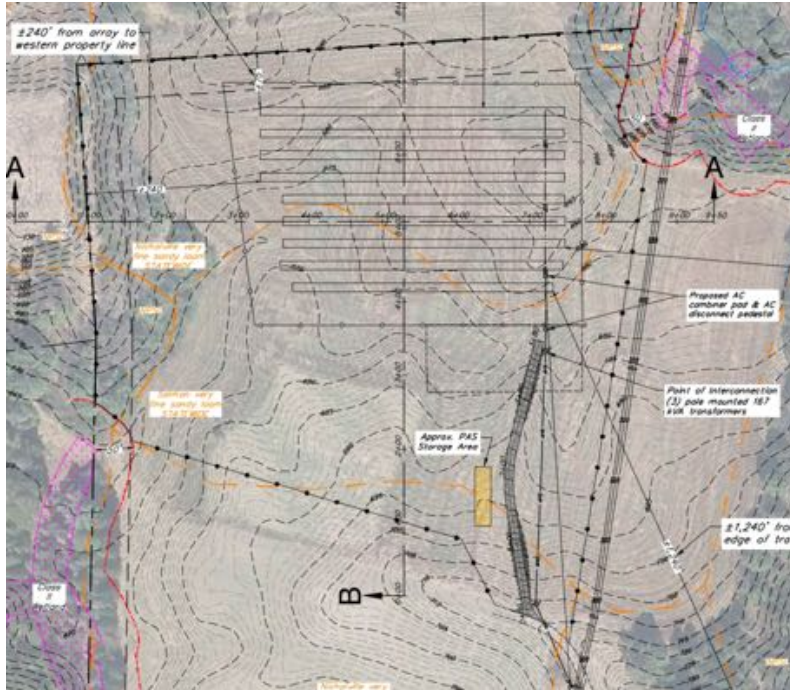


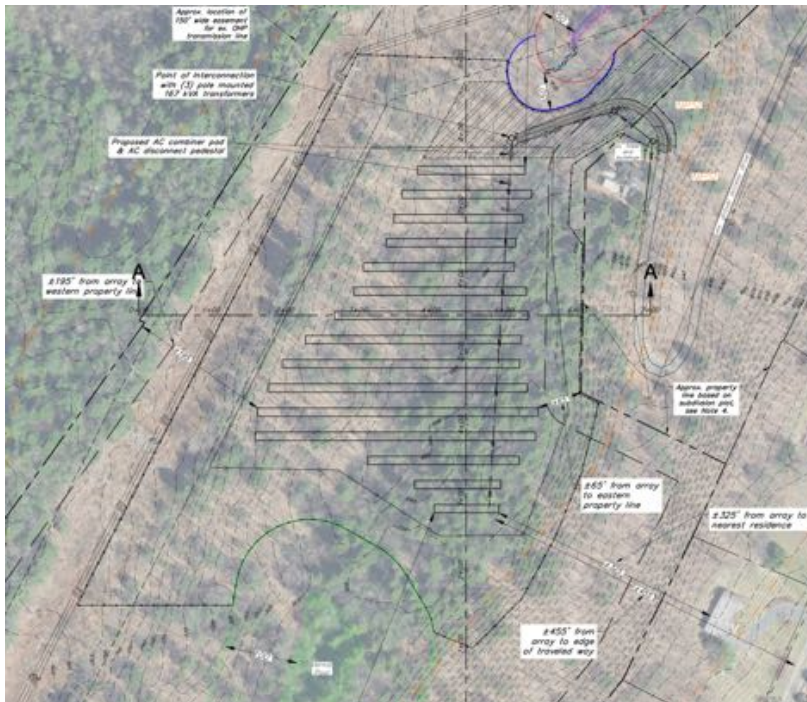
Forest and Field Conversion for Solar

Death by 1000 cuts

500 kW solar array on field in active farming for 200 years
St. Johnsbury



500 kW solar array to cut 8.2 acres of forest – Norwich



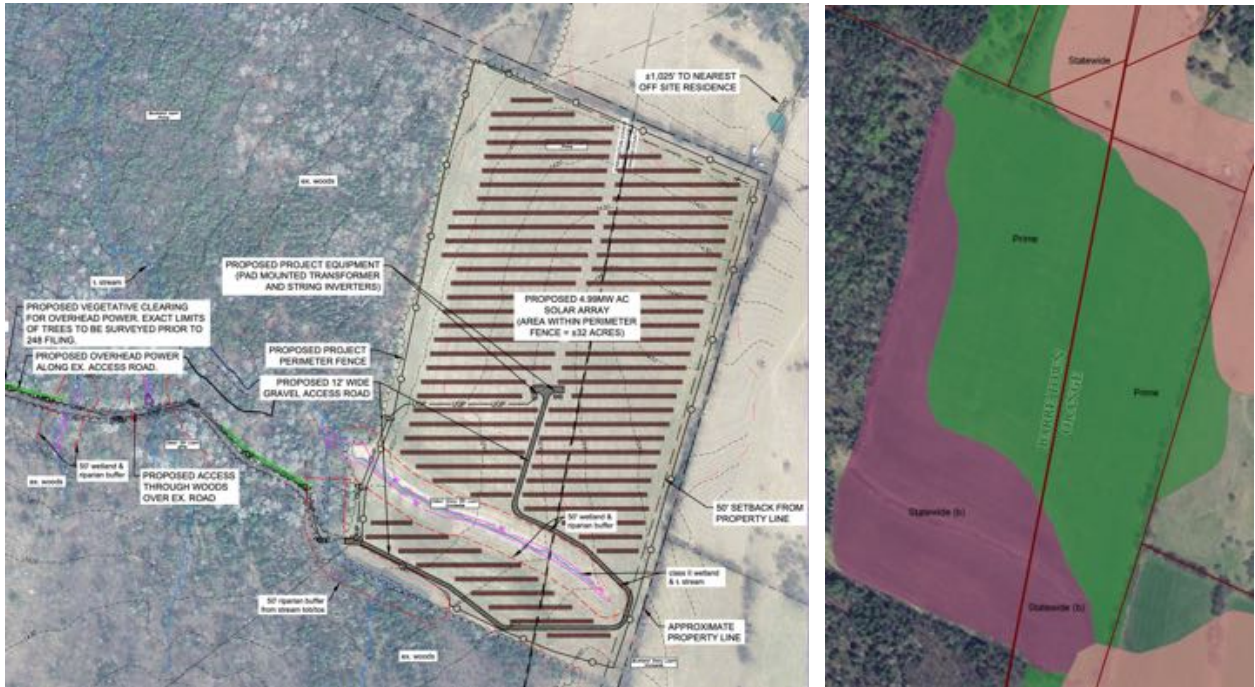
500 kW solar array on field that floods often including in winter – Manchester
Denied by the PUC resulting in uproar from REV and solar industry



Two 2 MW solar arrays on prominent hillside ~20 acre forest clearing
Bennington



4.99 MW solar array on prime agricultural soils – Barre Town



20 MW solar array on 87 – 100 acres, prime ag soil and 30 acre forest clearing
Shaftsbury (two more of these in the ISO-NE queue for Fair Haven & Windsor)

