

# The Vermont Department of Fish & Wildlife

## Wetland Acquisition and Restoration



Will Duane  
Land Acquisition Coordinator  
January 12, 2024

*The mission of the Vermont Fish & Wildlife Department is the conservation of our fish, wildlife, plants and their habitats for the people of Vermont*

# The Vermont Department of Fish & Wildlife

- ▶ 150+ Wildlife Management Areas and Streambank Management Areas statewide
- ▶ 100 years+ of public land ownership totaling over 130,000 acres
- ▶ VDFW is the largest single owner of wetlands in Vermont
- ▶ Conservation for habitat, public access, water quality, and flood resiliency



# The Vermont Department of Fish & Wildlife

## Types of Flood Resiliency Activities

- ▶ Wetland Property Acquisition
- ▶ Floodplain Property Acquisition
- ▶ Wetland Restoration
- ▶ Streambank Property Acquisition
- ▶ Assessment and Technical Assistance for Municipalities
- ▶ VFWD State Wildlife Grants, Habitat Stamp funds and Watershed Grants to replace undersized culverts and to remove unwanted dams





# The Vermont Department of Fish & Wildlife

- ▶ Brandon Swamp WMA
- ▶ 600 Acres+ public land with a growing footprint
- ▶ Most biologically diverse swamp complex in New England
- ▶ VT Conservation Design as a Landscape Scale Site of highest priority for Interior Forest Blocks, Connectivity Blocks, Surface Water and Riparian Areas, and Wildlife Connectivity

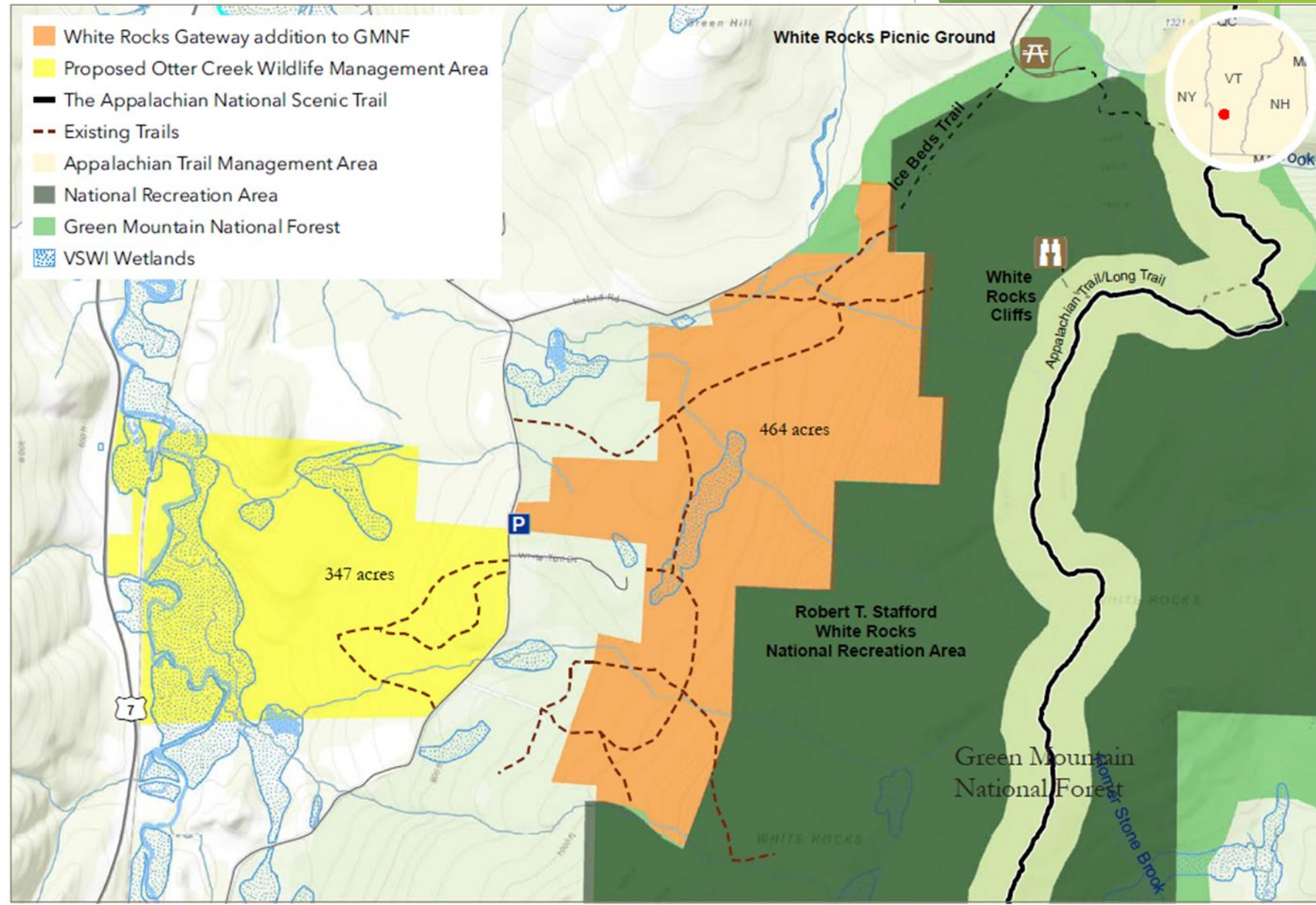




# The Vermont Department of Fish & Wildlife

## Otter Creek WMA

- ▶ 350 Acres Total
- ▶ 100 Acres of wetland and flood plain
- ▶ Upstream From Historic Wallingford Village.





# The Vermont Department of Fish & Wildlife

## Flood Buyouts

- ▶ Upper Missisquoi in Troy - 78 Acre FEMA parcel and farmland
- ▶ 2 Parcels in Morristown on Lamoille River

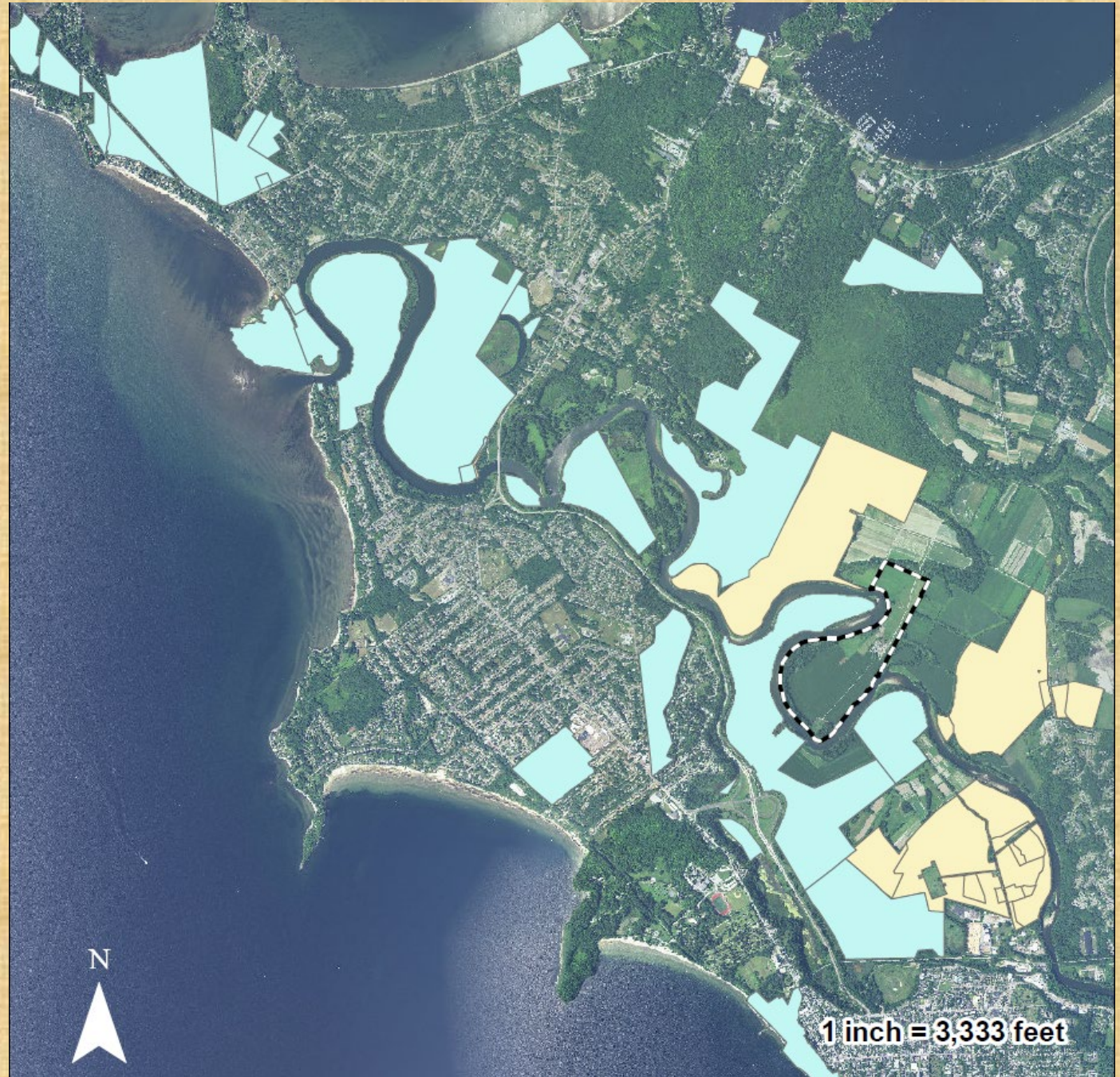
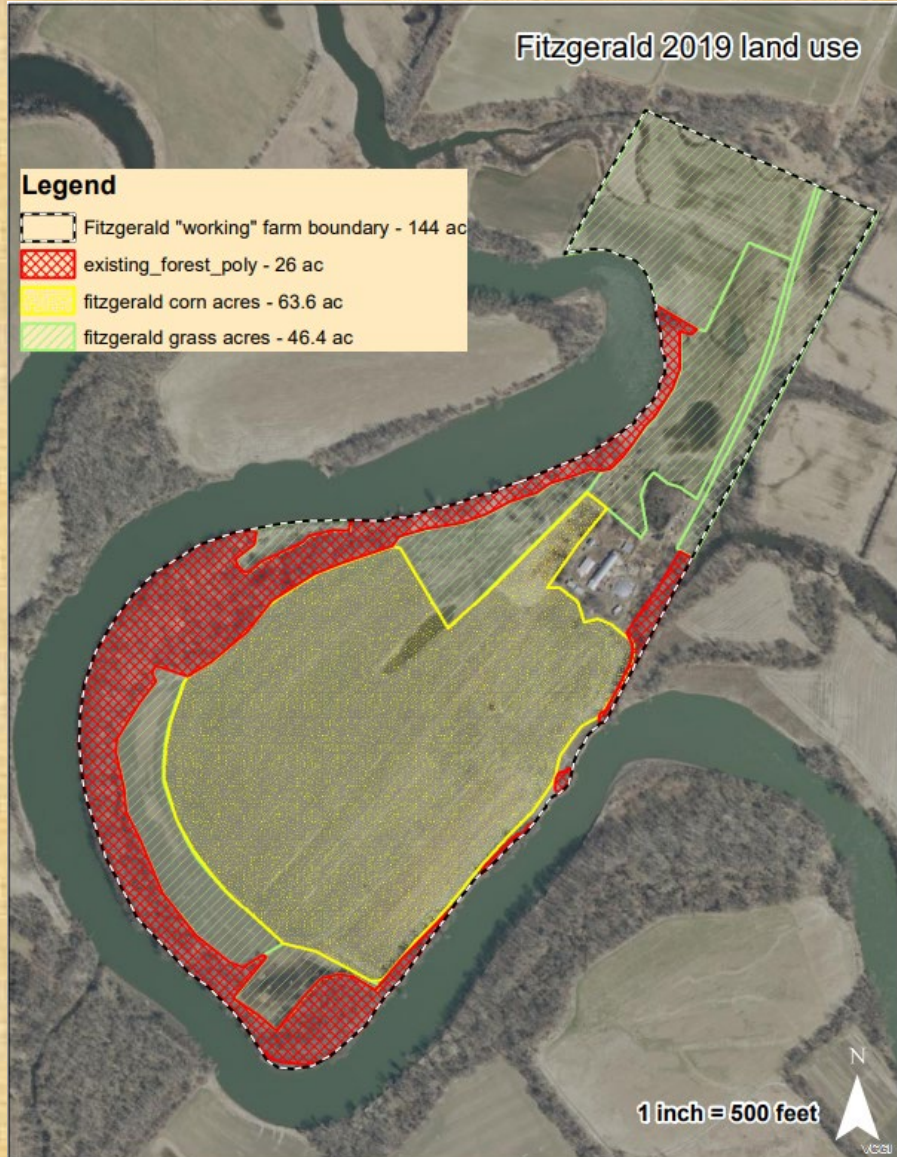




# Intervale WMA – Fitzgerald Farm

124 Acres – 100 Restorable

Colchester, VT – Winooski River Sub-Basin

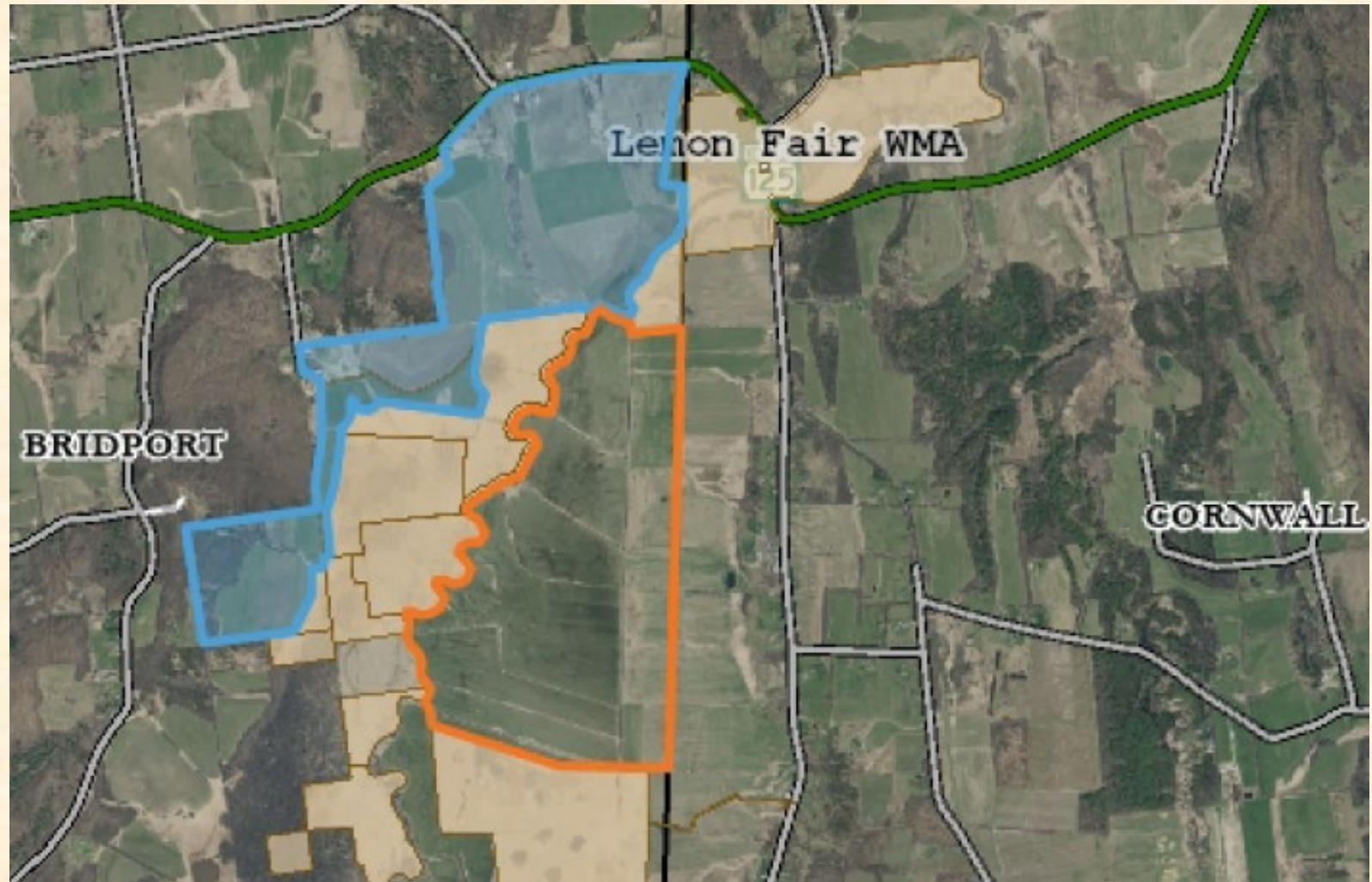
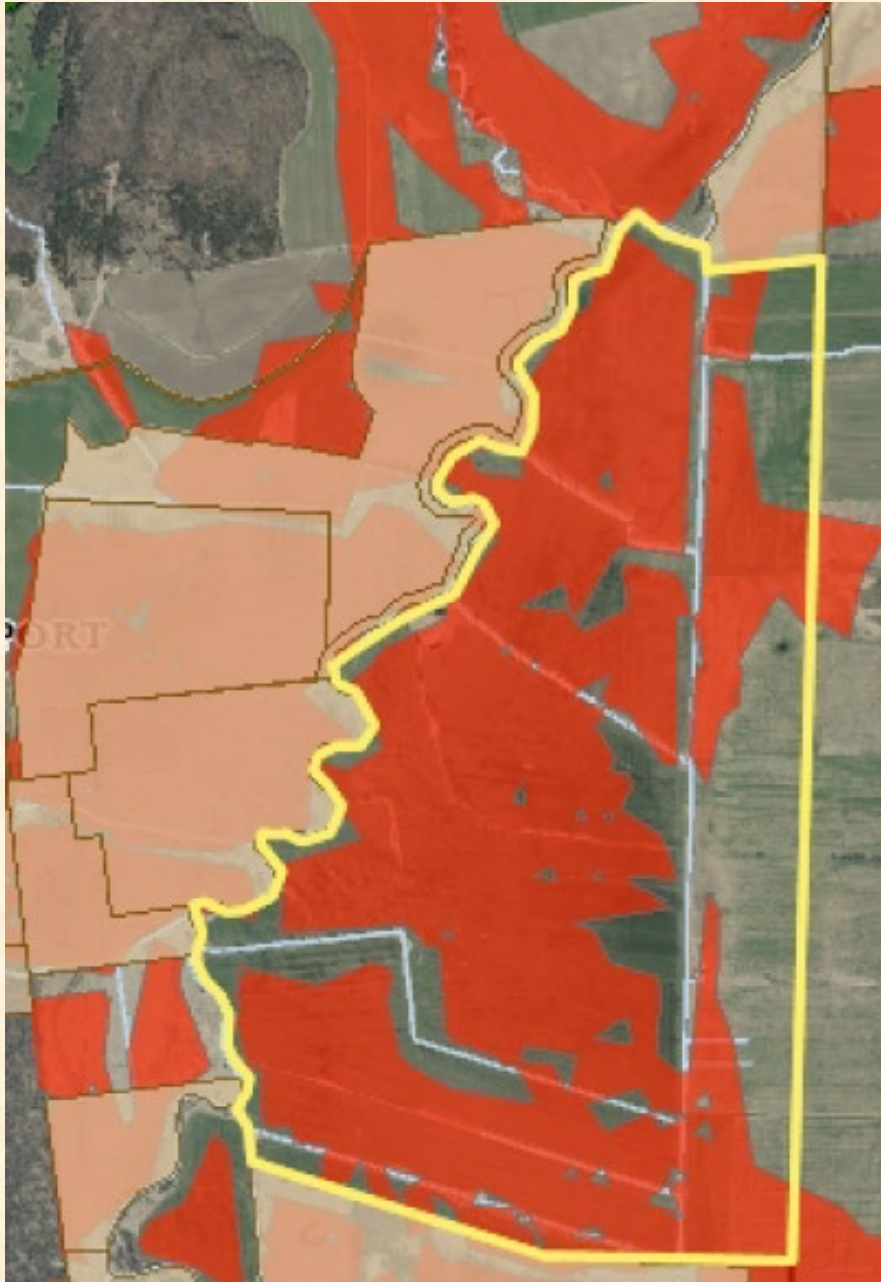








Lemon Fair WMA - Quesnel Parcel  
322 Acres – 322 Restorable  
Bridport, VT – Otter Creek Sub-Basin

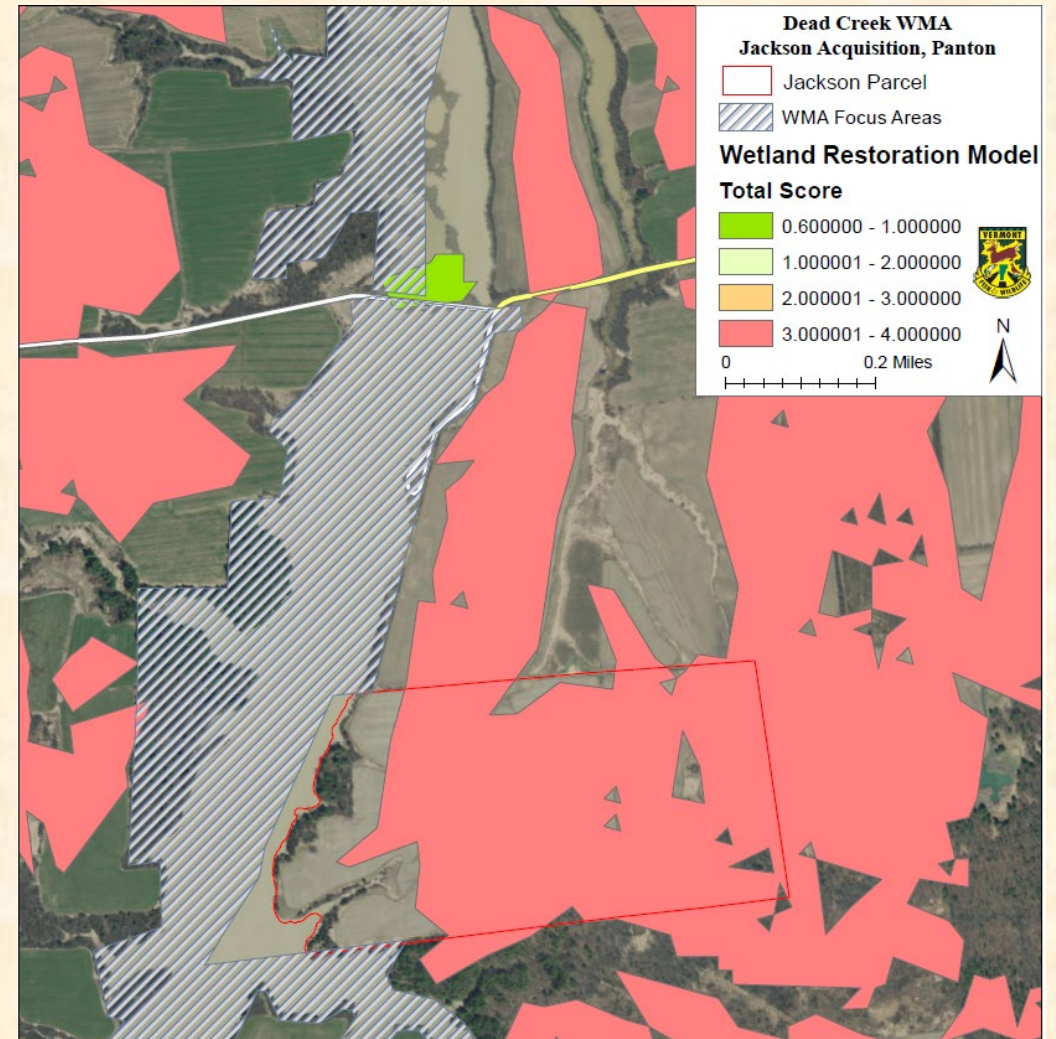
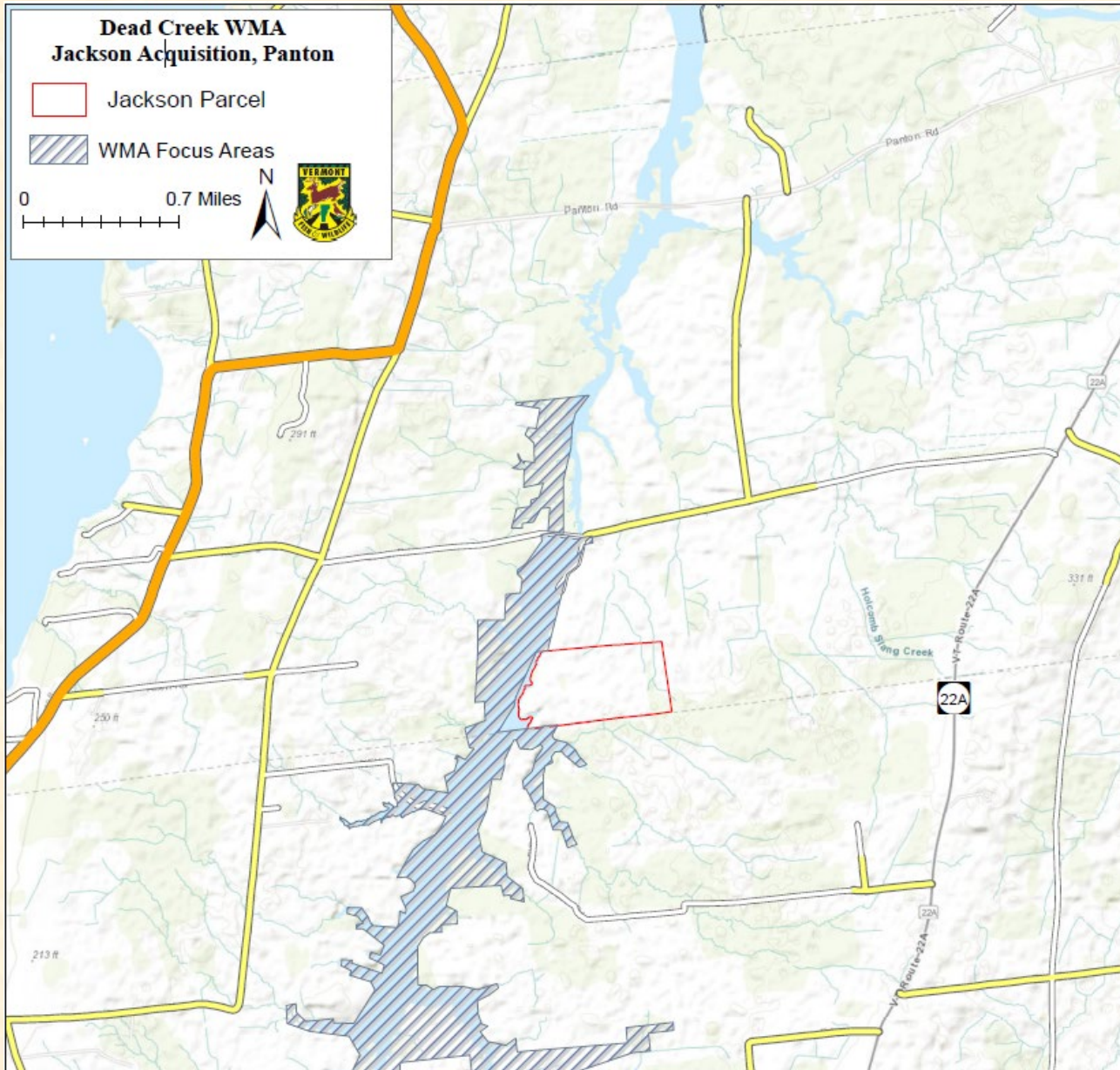




# Dead Creek WMA - Jackson Parcel

124 Acres – 119 Restorable

Panton, VT – Dead Creek Sub-Basin

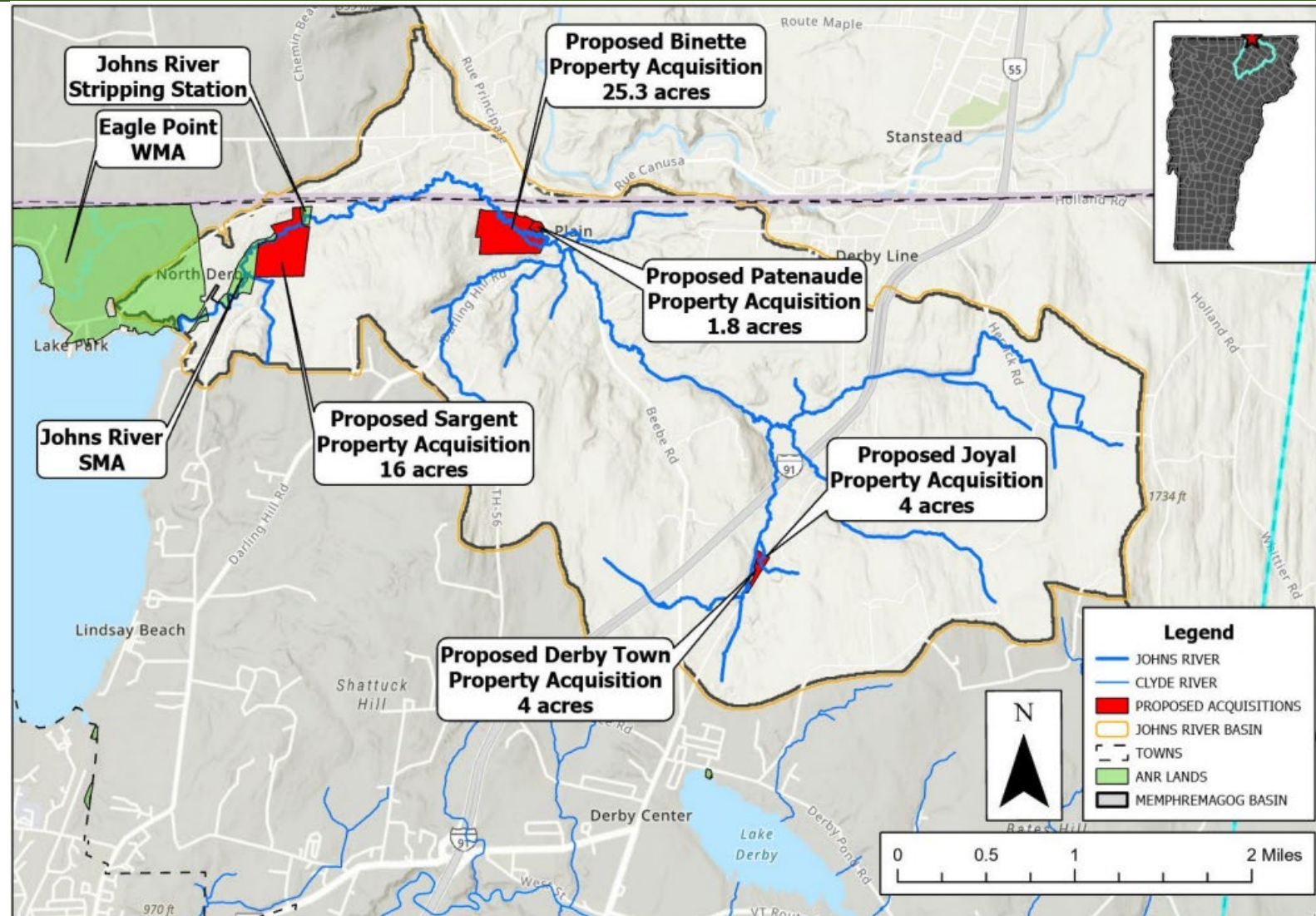




# The Vermont Department of Fish & Wildlife

## Johns River

- ▶ 6 planned acquisitions along the Johns River
- ▶ Restoring riparian areas, wetlands, and floodplain
- ▶ Increasing public access and resiliency



**Proposed Streambank Management Area Conservation Acquisitions  
Johns River Basin - Derby, VT**

Map generated on 7/28/2023 by Patrick Hurley - Memphremagog Watershed Association, Newport, VT

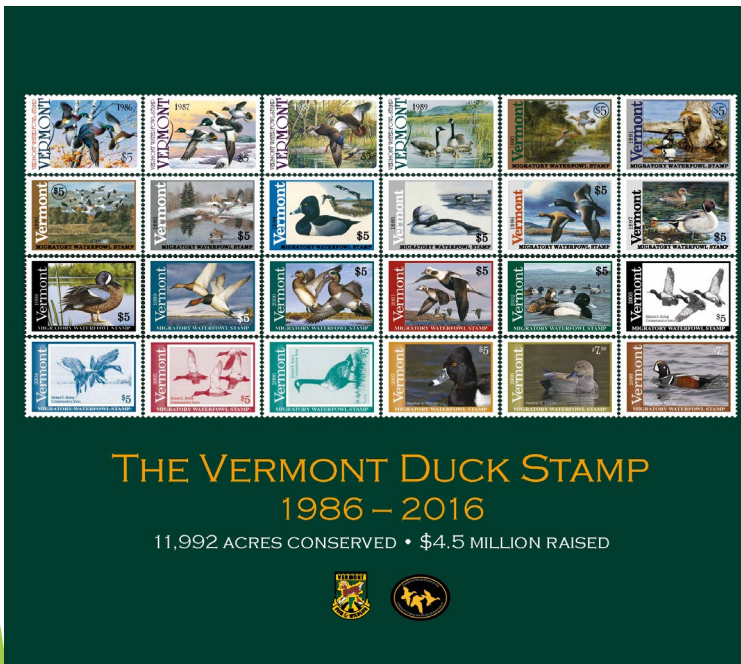




# The Vermont Department of Fish & Wildlife

## Vermont Duck Stamp Program

- First stamp released 1986
- \$4.5 million raised by stamp sales
- 12,000 acres of wetlands conserved through nearly 100 projects





# The Vermont Department of Fish & Wildlife

LCBP/EPA-  
Funded Wetland  
Acquisition and  
Restoration  
Grant





## **Additional Wetland Conservation Funding**

- ▶ Vermont Habitat Stamp
- ▶ US FWS Pittman Robertson Act Funds
- ▶ Vermont Housing and Conservation Board
- ▶ Private Fundraising