

# BAY RIDGE APARTMENTS & SOLAR

Kathy Beyer  
Senior VP Real Estate Development  
Evernorth



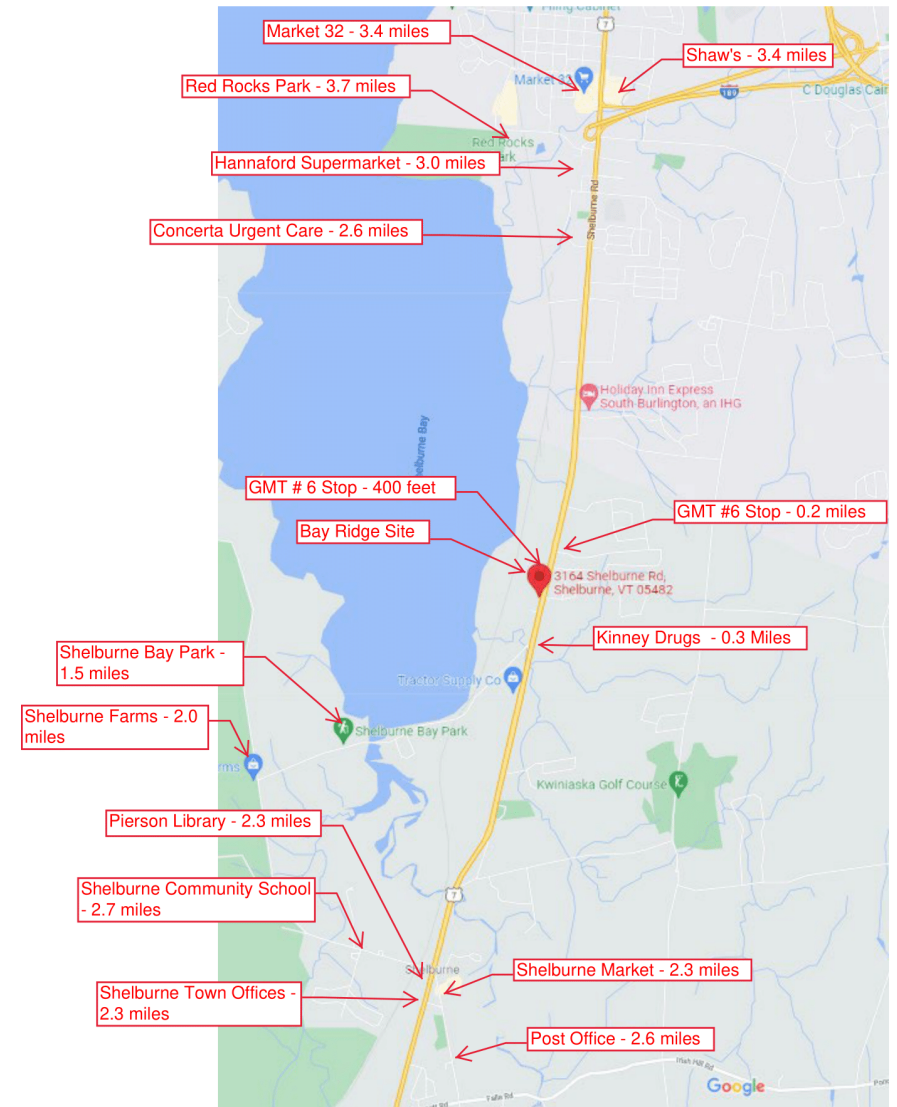
**evernorth**  
Investing in communities. Building possibilities.

# Introducing Bay Ridge

---

- A new mixed-income neighborhood
- 68 Affordable Apartments
- 26 Shared Equity Homes
- Location: Shelburne

Bay Ridge Location Map – 3164 Shelburne Road, Shelburne, VT 05482



# Bay Ridge Site Plan

By reducing the use of fossil fuels for heating, Bay Ridge will reduce carbon emissions by 189 tons per year.



4 LOCATOR MAP  
Scale: 1" = 1480'



3 SITE PLAN  
Scale: 1" = 30'-0"

**BAY RIDGE**  
SHELburnE, VERMONT

Copyright © 2022 All Rights Reserved  
DUNCAN WISNIEWSKI ARCHITECTURE  
A Vermont Corporation

LOCAL PERMIT SET

**Duncan Wisniewski**  
ARCHITECTURE

255 SOUTH CHAMPLAIN STREET  
BURLINGTON, VERMONT 05401  
TEL: 802.245.6100

DATE: 04.20.2022  
DRAWN: S.B., A.B.C.

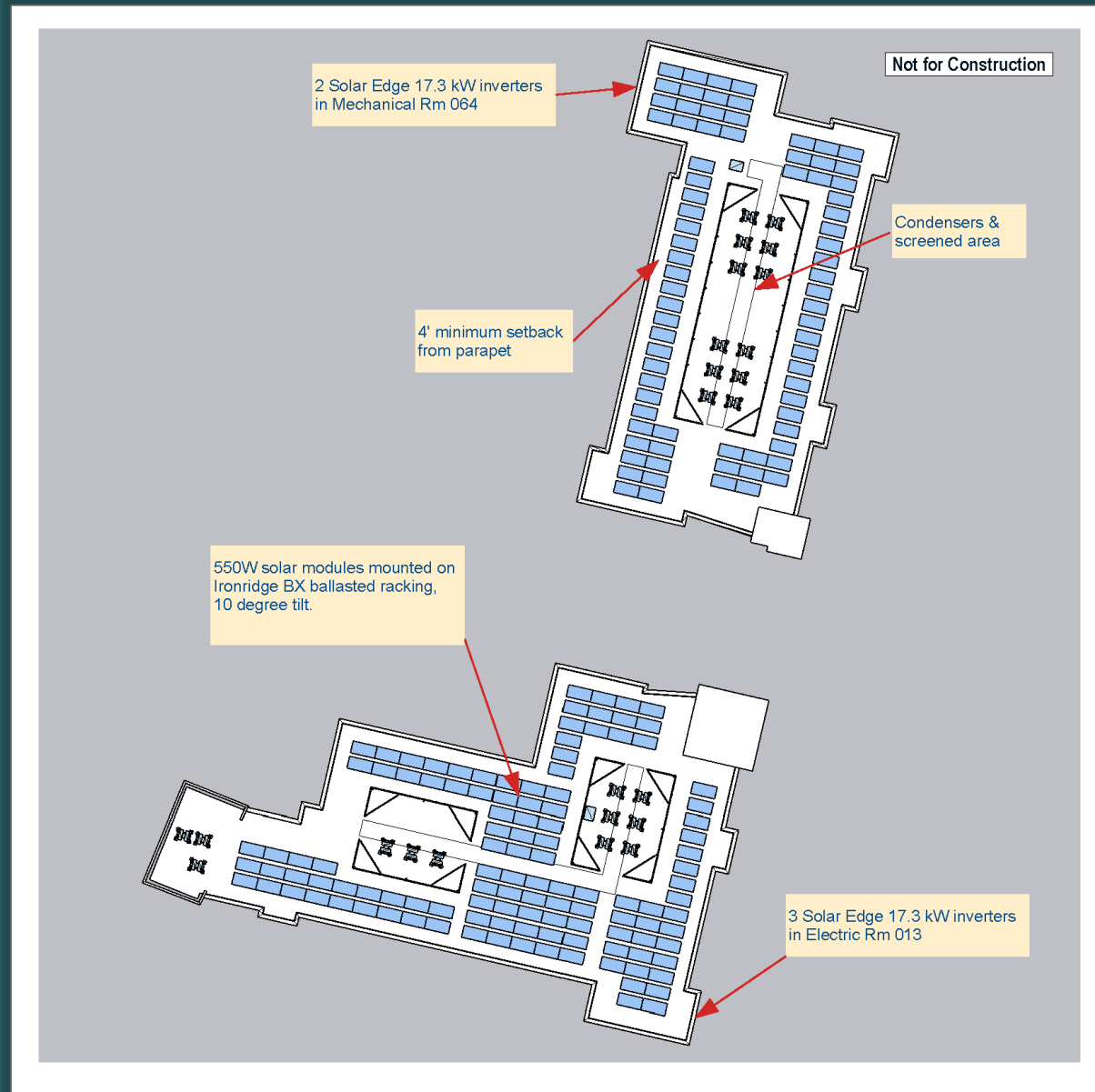
L1-1.7

# Bay Ridge Apartments



# Bay Ridge Rooftop Solar

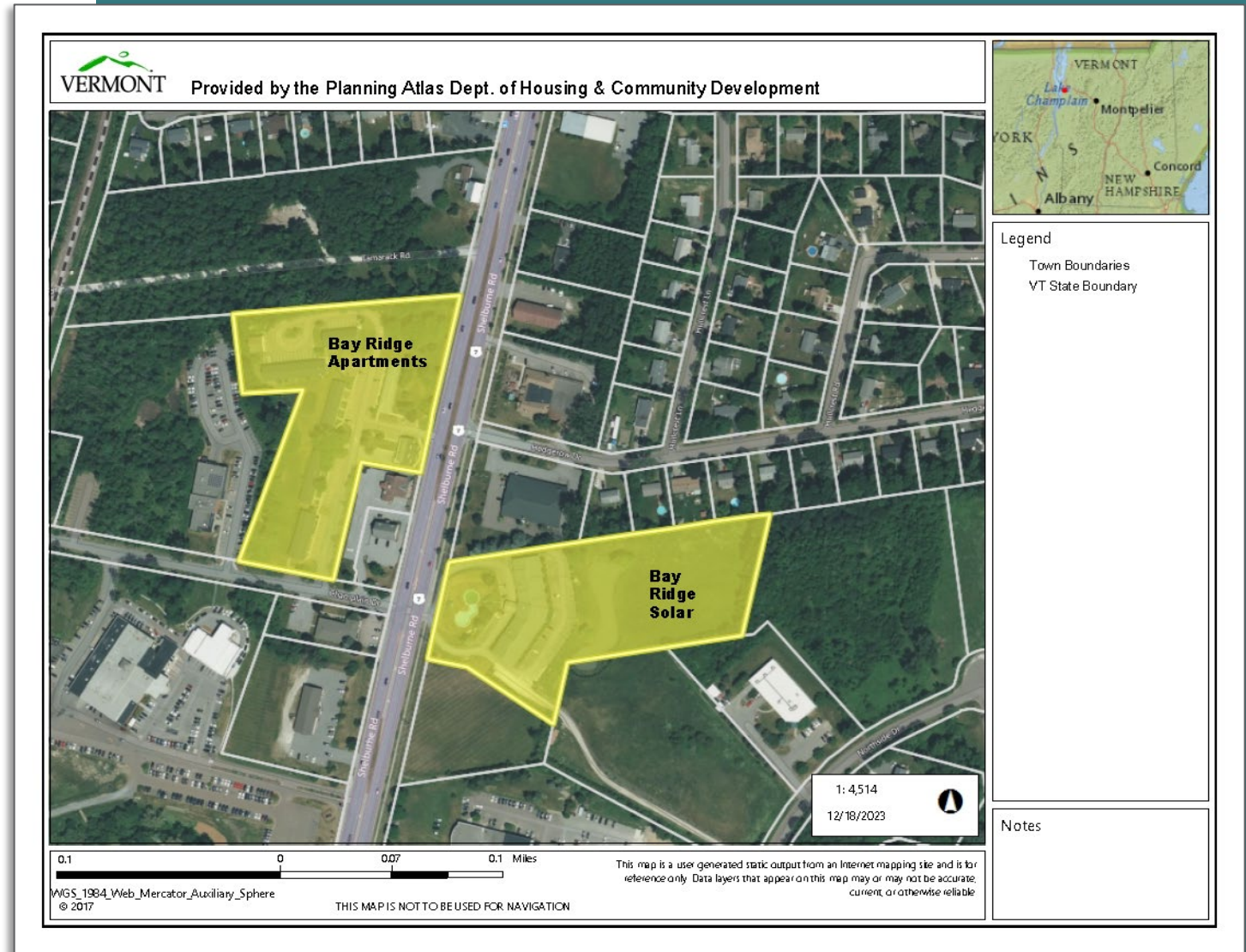
---



Adding solar to Bay Ridge Apartments is critical to the operating sustainability of the building.

# Bay Ridge Aerial View

The State's Energy  
Plan stresses the need  
“to ensure that the  
impacts of renewable  
energy are equitably  
distributed



# Bay Ridge Solar Site Plan



# Bay Ridge Solar Rooftop & Off -Site

---

The capital costs for the combined solar arrays is \$882,000 which is almost \$13,000/unit.

	Rooftop	Offsite	Combined
kwh production	113,500	270,800	384,300
net-metered credits generated	\$17,971	\$32,875	\$50,846
% total usage offset	15%	36%	51%





As of December 2022, there were over 2,500 community solar projects, operating in 43 states and Washington D.C., with Florida, New York and Minnesota leading the way.

But only about 2% of the nationwide solar capacity has been dedicated to low-income communities—something the IRA aims to change.

For low- to moderate-income residents in multifamily housing who do not have access to a roof, do not own their property...community solar creates an opportunity to access renewable energy and lower utility costs.

Source: Enterprise Community Partners, November 13, 2023

An aerial photograph showing a vast field of solar panels arranged in long, parallel rows. The panels are a dark blue color and are set against a lush green background of grass. The perspective is from directly above, looking down at the rows of panels.

# BAY RIDGE APARTMENTS & SOLAR

Kathy Beyer  
Senior VP Real Estate  
Development  
Evernorth