

Vermont Land Trust



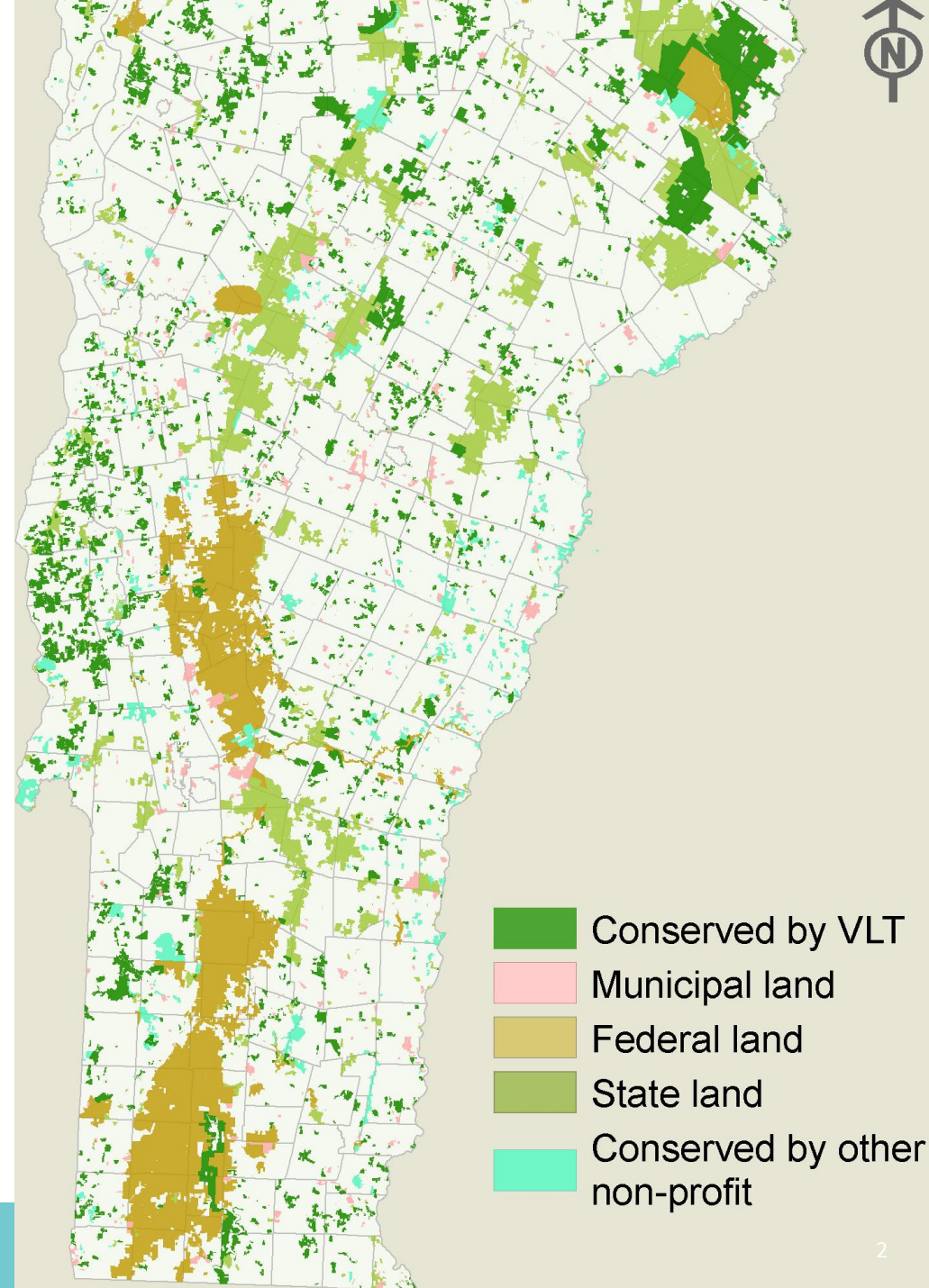
UNITING LAND AND LIVES

Abby White
2/17/23

About Us

Rooted in Vermont since 1977, the Vermont Land Trust helps people protect, care for, and connect to the home we share.

- Conserved 11% Vermont, over 620,000 acres
- Steward 2,300 easements
- 3,500 members
- 46 employees statewide





Harrison Farm, Addison

Farmland Protection and Access

- Over 1,000 farms conserved
- 158,000 acres protected
- Over 100 successful transfers
- Hundreds of streams protected and wetlands improved

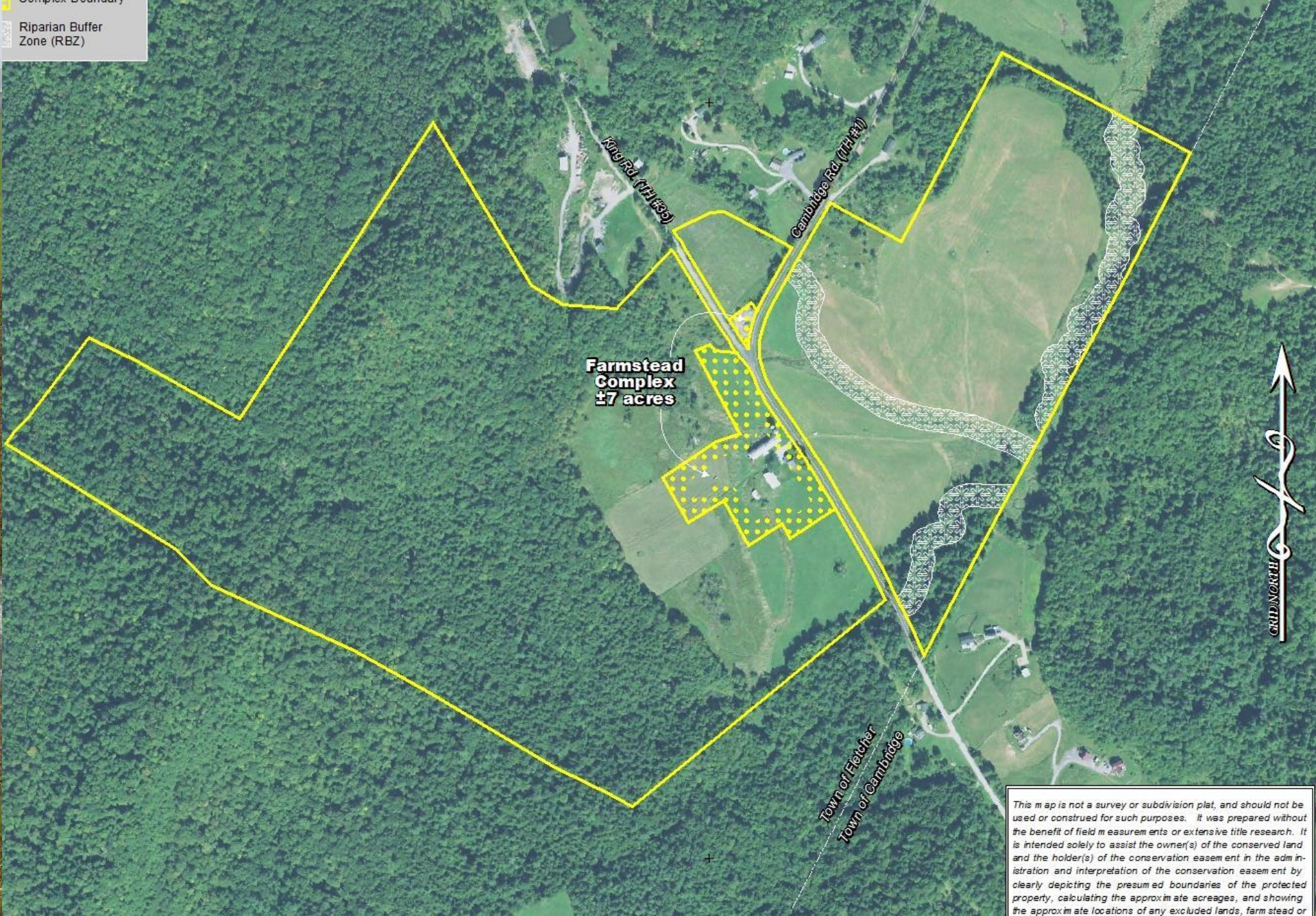
Doyle Family Fletcher, VT

- Transfer from the King Family Trust to the Doyles
- 180 Acres
- Diversified Farm – Chicken, Pork, Beef, Sugarbush
- Riparian Protection
- Conservation Easement purchase supported by VHCB & NRCS





Complex Boundary
Riparian Buffer
Zone (RBZ)



**Farmstead
Complex
±7 acres**

Town of Fletcher
Town of Cambridge

This map is not a survey or subdivision plat, and should not be used or construed for such purposes. It was prepared without the benefit of field measurements or extensive title research. It is intended solely to assist the owner(s) of the conserved land and the holder(s) of the conservation easement in the administration and interpretation of the conservation easement by clearly depicting the presumed boundaries of the protected property, calculating the approximate acreages, and showing the approximate locations of any excluded lands, farmstead or

Dodge – Gardner Pownal, VT

- Transfer from the Dodge Family to the Gardners
- 210 Acres
- Riparian/Wetland Protection
- Organic Dairy & Sugarbush
- Conservation Easement purchase supported by VHCB & NRCS



Expanding access to farmland

Having the land is huge. For me, it all comes back to having this place that we can improve—not only in terms of physical infrastructure...but through a long-term commitment to the land itself.

- Henry Webb,
Old Road Farm, 24 acres
Granville



The first time walking onto the farm and the big gambrel barn, there's just something that catches you. You can feel the imprint and care that generations of people have put into managing this land.

- Shona Sanford-Long,
Flying Dog Farm and
White River Land
Collaborative
Tunbridge



Pine Island Community Gardens,
Colchester

Thank you!