

# The Child Development Division's Child Care Financial Assistance Program

Senate Health and Welfare Committee

January 12, 2023

Miranda Gray, Deputy Commissioner

Emily Hazard, Child Care Benefits Administrator



Agency of Human Services, Department for  
Children and Families



# Child Development Division

- Child Care Financial Assistance Program (CCFAP) Rate Structure and Eligibility Criteria
- Landscape of the Child Care Payment including workforce
- Child Care Resource Distribution

# What is the Child Care Financial Assistance Program?

- The Child Care Financial Assistance Program is administered by the Child Development Division (CDD) as part of its mission to improve the well-being of Vermont's children.
- To do so, the program provides some or all the cost for early care, early education, and school age care for eligible families. This helps ensure all children, ages 6 weeks to 13 years (19 years for those with special needs), have access to quality child care.
- The CDD contracts with 11 Community Child Care Support Agencies (CCCSA) in the 12 AHS regions. Specialists in the CCCSA's help families find child care providers, apply for child care financial assistance, and determine eligibility.
- The program assists many different types of families whether caregivers are students, looking for work, retired, or working. In fact, a family of 3 with a household income of \$80,604 a year qualifies for some assistance.
- Current budget is \$62.75M which is a combination of GF and FF (Child Care Development Block Grant (CCDBG))

# CCFAP Rates

- Rates were determined based upon using the 2019 Market Rate Survey and set at the 75<sup>th</sup> percentile.
- The CDD has a set cap on what the state will pay on behalf of a family. The state pays the capped rate or the providers rate, whichever is less, after subtracting the family share (if any).
- If a family uses more than one child care provider, the family share is paid to the provider that cares for the youngest child first.
- The portion the State will pay (if any) for an eligible family will depend on the family's application, the provider's rate agreement, the State's capped rates, and the amount the family is obligated to pay (family share).

# Child Care Financial Assistance State's Capped Rates

Effective July 3, 2022

The State's capped rates are the maximum amount the State will pay to a child care provider on behalf of a family receiving child care financial assistance. The State will pay the lesser of the two: up to the provider's rate or the State's capped rate. To receive the maximum amount the State pays, a child care provider may need to increase their rates. For more detailed information about payments, which includes examples, please see our [fact sheet](#).

Licensed Care		1 STAR	2 STARS	3 STARS	4 STARS	5 STARS	Registered Home		1 STAR	2 STARS	3 STARS	4 STARS	5 STARS
Infant	Full-Time	\$290	\$297	\$300	\$314	\$349	Infant	Full-Time	\$200	\$203	\$207	\$210	\$225
	Part-Time	\$159	\$163	\$165	\$172	\$191		Part-Time	\$110	\$111	\$113	\$115	\$123
	Extended Time	\$394	\$403	\$408	\$427	\$474		Extended Time	\$272	\$276	\$281	\$288	\$306
Toddler	Full-Time	\$280	\$281	\$289	\$306	\$328	Toddler	Full-Time	\$198	\$200	\$204	\$208	\$211
	Part-Time	\$154	\$156	\$159	\$168	\$180		Part-Time	\$108	\$110	\$112	\$114	\$116
	Extended Time	\$380	\$382	\$393	\$416	\$446		Extended Time	\$269	\$272	\$277	\$285	\$286
Preschool	Full-Time	\$275	\$280	\$288	\$300	\$325	Preschool	Full-Time	\$190	\$195	\$200	\$205	\$210
	Part-Time	\$151	\$154	\$158	\$165	\$178		Part-Time	\$104	\$107	\$110	\$112	\$115
	Extended Time	\$374	\$380	\$391	\$408	\$442		Extended Time	\$258	\$265	\$272	\$278	\$285
School Age	Full-Time	\$225	\$231	\$245	\$250	\$275	School Age	Full-Time	\$185	\$190	\$195	\$198	\$200
	Part-Time	\$123	\$127	\$134	\$137	\$151		Part-Time	\$101	\$104	\$107	\$108	\$110
	Extended Time	\$306	\$314	\$333	\$340	\$374		Extended Time	\$251	\$258	\$265	\$267	\$272

## Important Definitions

### Authorized Hours of Care:

Full-Time Weekly – 26 to 50 hours a week

Part-Time Weekly – 1 to 25 hours a week

Extended Time – more than 50 hours a week

### Child's Age

Infant – birth up to 24 months old

Toddler – 2 up to 3 years old

Preschool – 3 up to 5 years old

School Age – 5 up to 12 years old (19 if child has special needs)



# How are Families or Caretakers Found Eligible for CCFAP?

- To be eligible for Child Care Financial Assistance, a family must:
  - Have a reason for child care (have a job, self-employed, looking for work, attending school or training, participating in Reach Up or has a special health need and need help caring for their child(ren), have a child with significant health or specialized development needs; an open case with Family Services or the family is experiencing significant stress)
  - Meet income guidelines
  - Be a Vermont Resident
  - Child receiving care must be a legal resident of United States

[CCFAP-Booklet.pdf \(vermont.gov\)](#)



# Child Care Financial Assistance Income Guidelines

Effective July 31, 2022

Family Size	Gross Monthly Income								
	\$0	\$25	\$50	\$75	\$100	\$125	\$150	\$175	\$200
3 or less	\$ 2,879	\$ 3,359	\$ 3,838	\$ 4,318	\$ 4,798	\$ 5,278	\$ 5,758	\$ 6,237	\$ 6,717
4	\$ 3,469	\$ 4,047	\$ 4,625	\$ 5,203	\$ 5,781	\$ 6,359	\$ 6,938	\$ 7,516	\$ 8,094
5	\$ 4,059	\$ 4,735	\$ 5,412	\$ 6,088	\$ 6,765	\$ 7,441	\$ 8,118	\$ 8,794	\$ 9,470
6 or more	\$ 4,649	\$ 5,424	\$ 6,198	\$ 6,973	\$ 7,748	\$ 8,523	\$ 9,298	\$ 10,072	\$ 10,847
Weekly Family Share	\$0	\$25	\$50	\$75	\$100	\$125	\$150	\$175	\$200

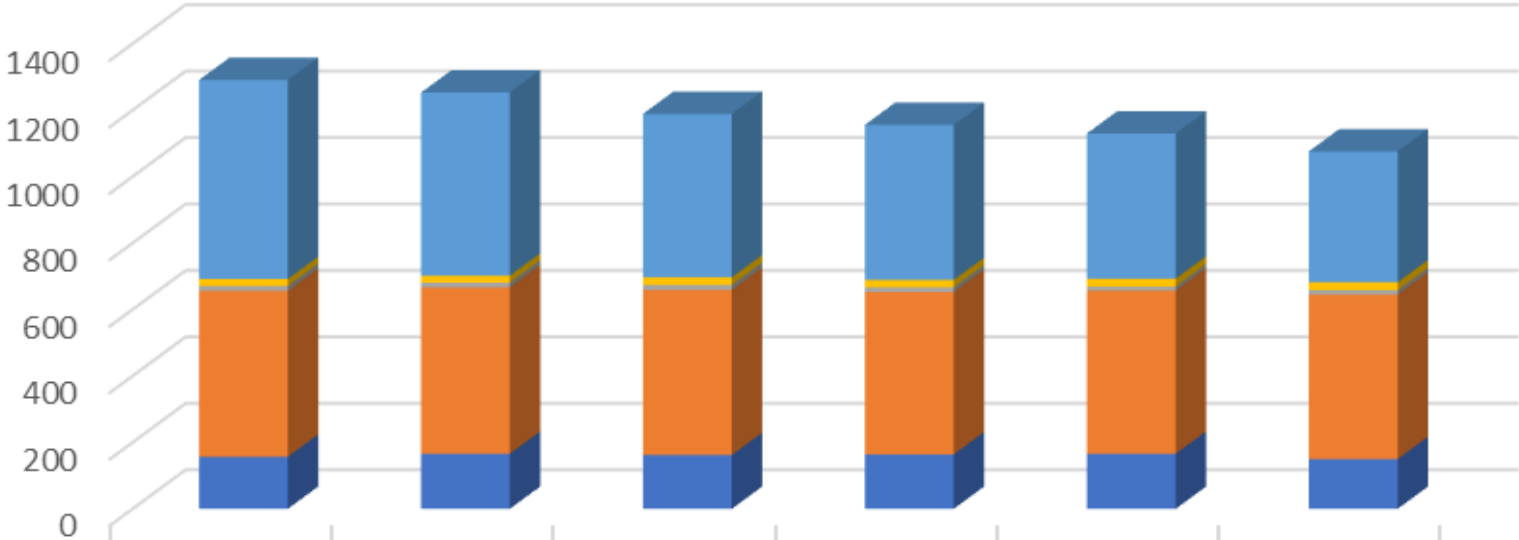
# Child Care Landscape





# Child Care Programs Over The Last 6 Years

# of Child Care Programs  
By Program Type



	Sept. 2017	Sept. 2018	Sept. 2019	Sept. 2020	Sept. 2021	Sept. 2022
Registered FCCH	599	551	492	467	437	394
Licensed FCCH	21	21	23	22	24	24
CBCCPP - Non-Recurring	15	14	15	14	12	13
CBCCPP	499	501	497	489	491	495
Afterschool Child Care Program	157	166	162	164	166	150

FCCH – Family Child Care Home

CBCCPP – Child Based Child Care and Preschool Program

Non-recurring – child care services to non-recurring clientele

# Licensed and Registered Child Care Capacity

## Types of Providers:

- Public PreK Programs— 99
- Licensed Child Care Centers – 314
- Licensed Family Child Care Home – 21  
(providers must meet staff/children ratios; can serve more than 10 children)
- Registered Family Child Care Home – 290 (limited to 10 children no more than 6 under 6 years old and 4 school age)
- Head Start Programs – 76 (licensed sites and home-based services)

## Statewide Capacity by Age (Sept 2022):

- Infants 2,914
- Toddlers 3,216
- PreK 10,877
- School Age 11,243
- Total 28,250

# CCFAP Families and Children Served

Utilization of the program: (for the month of Nov 2022)

FPL	Co-Pay	Children	Families
Under 150%	\$0*	4617	4173
151-200% FPL	\$25-\$50/wk	492	416
201-250% FPL	\$50-\$100/wk	726	651
251-300% FPL	\$100-\$150/wk	519	412
301-350%FPL	\$150-\$200/wk	386	281
Total		6740	5933

\*Certain service needs (Family Support, Protective Services, Reach Up, anything with a DCF Adoption Assistance Agreement) are not income-sensitive and may be assigned a \$0 Family Share despite higher income.

# Child Care Resources Distributed in 2022

Programs Run	Spent/Projected
CRRSA	\$12,228,305
ARPA Child Care Stabilization	\$29,332,561
ARPA Discretionary Funds	\$18,839,732
Child Care Workforce Retention Bonuses	\$7,000,000
Total	\$67,400,598