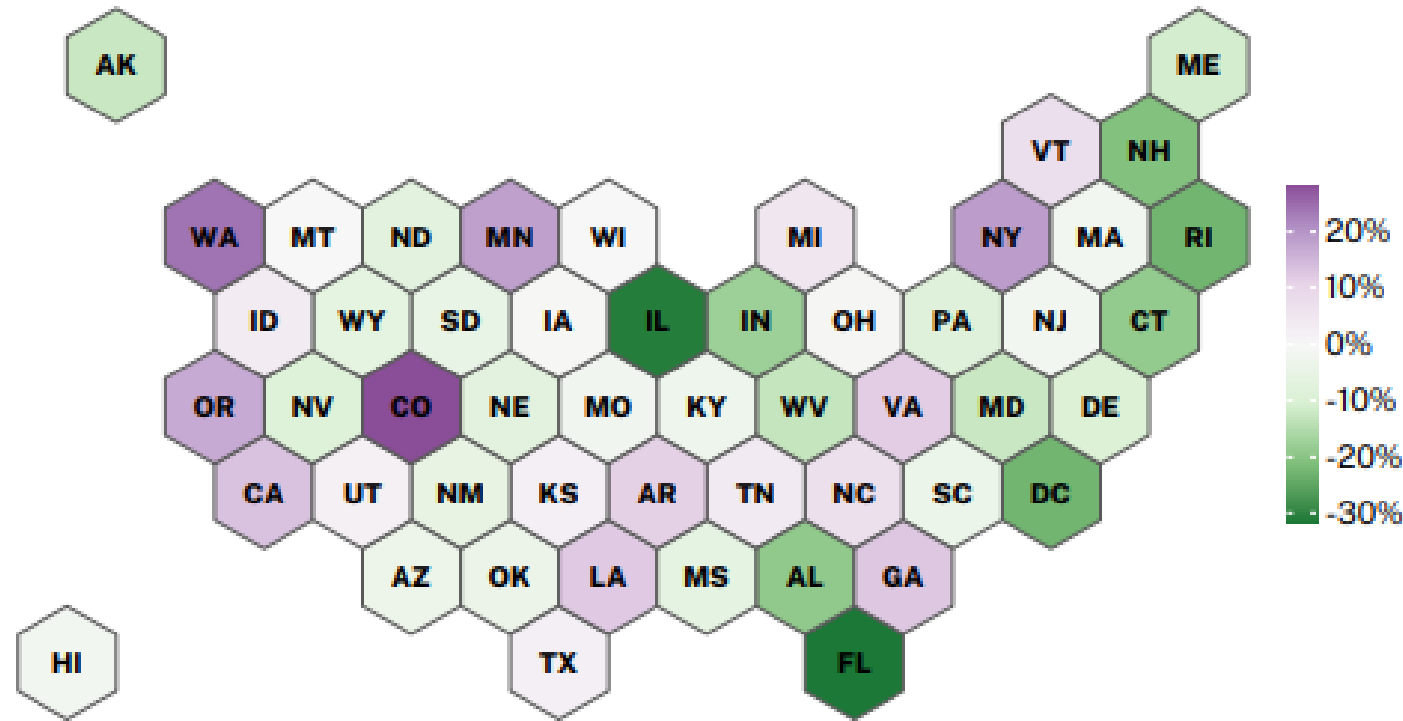


Figure 9. Percent change in violent crime, 2019 to 2022

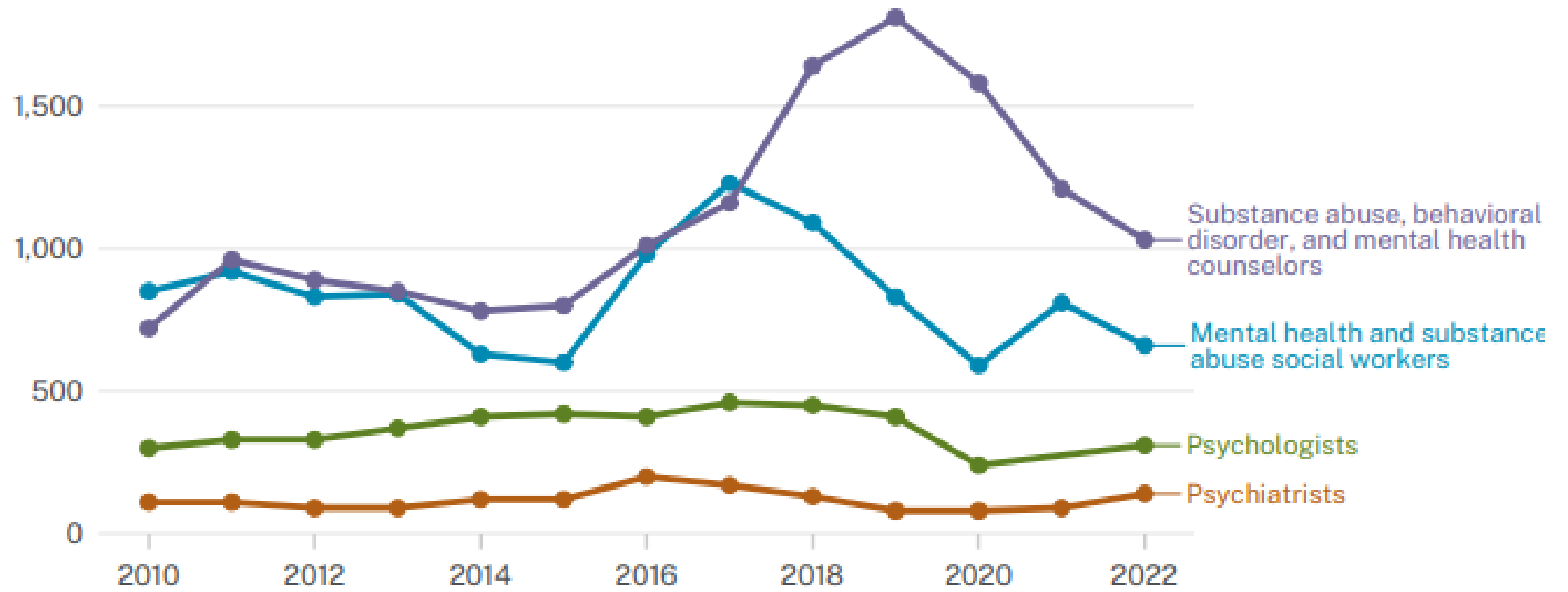


FBI Uniform Crime Reporting Program SRS

The FBI stopped Uniform Crime Reporting Program Summary Reporting System (SRS) data collection in 2020, which decreased the number of agencies that submitted their crime data and thus reduced the reliability of state estimates in 2021. In 2022, they allowed agencies who were unable to submit NIBRS data to submit SRS data again. 94 percent of the U.S. population was covered in the 2022 crime data submissions to the FBI, with most states providing close to complete data. However, the population upon which the estimates were derived decreased by over 10 percent in three states: Florida, Hawaii, and Illinois, so conclusions about crime changes in those states should be interpreted with additional caution.

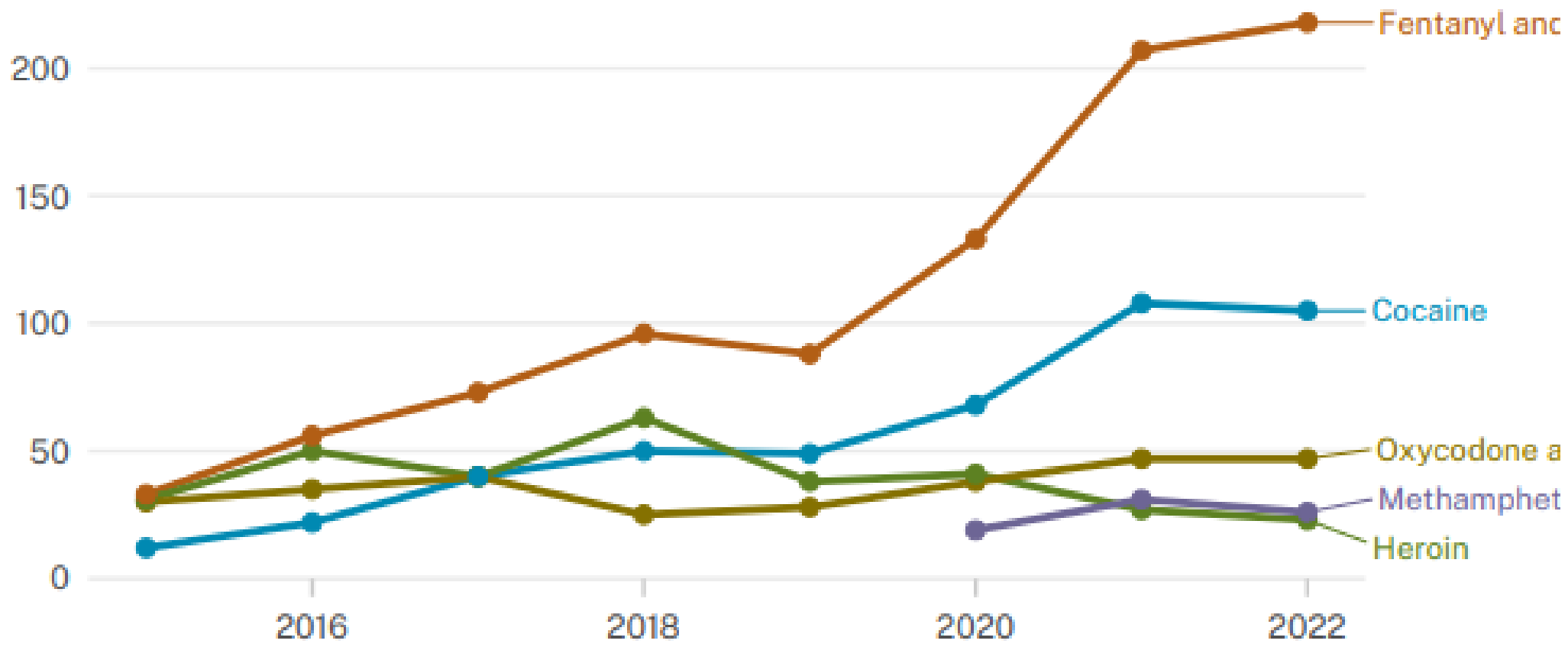
Figure 2. Number of behavioral health providers

Vermont



BLS Occupational Employment and Wage Statistics

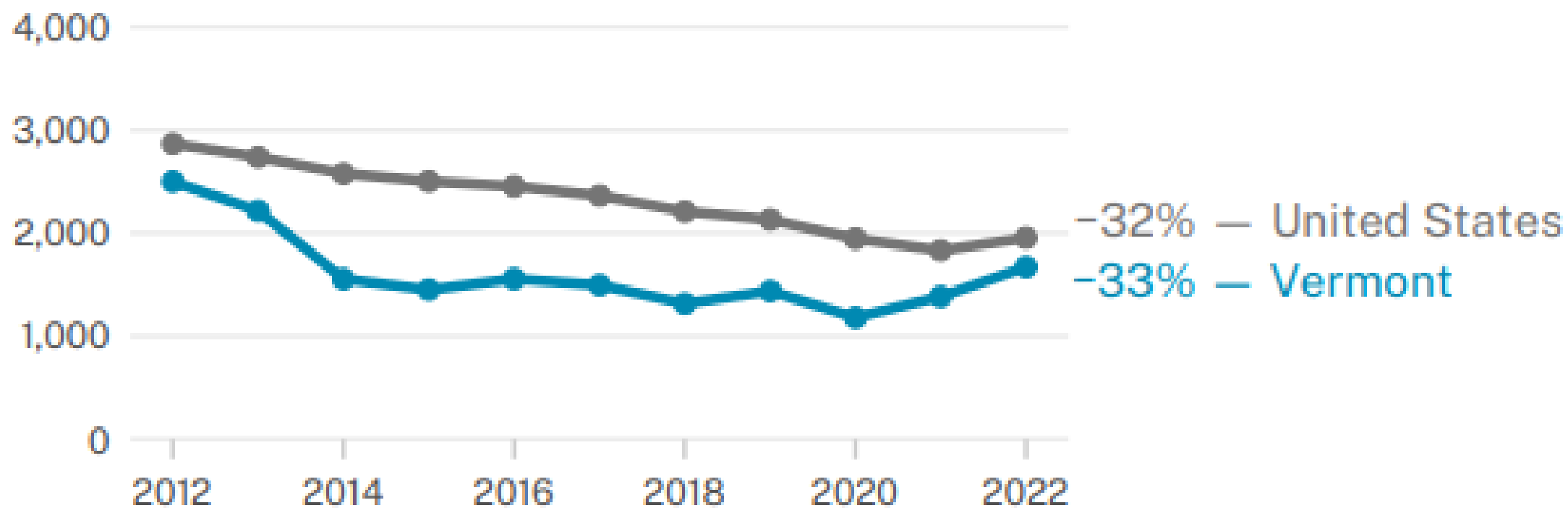
Figure 5. Deaths due to overdose by drug type
Vermont



CDC National Center for Health Statistics, National Vital Statistics System

Figure 13. Property index crime reported to police

Rate per 100k residents



FBI Uniform Crime Reporting Program SRS

Figure 14. Property index crime reported to police by offense

Rate per 100k residents

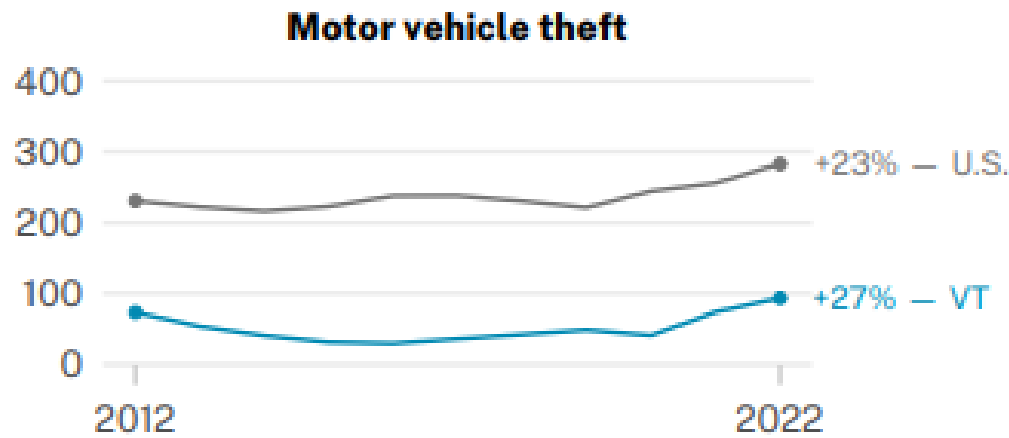
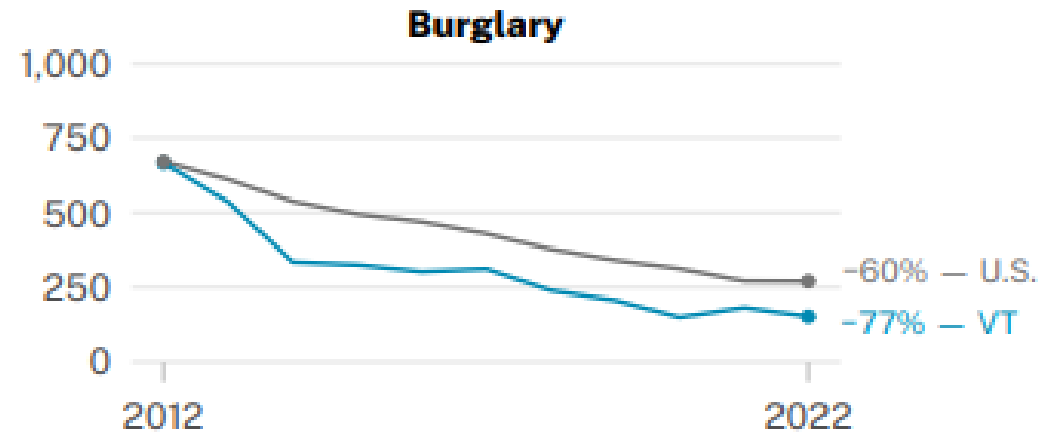
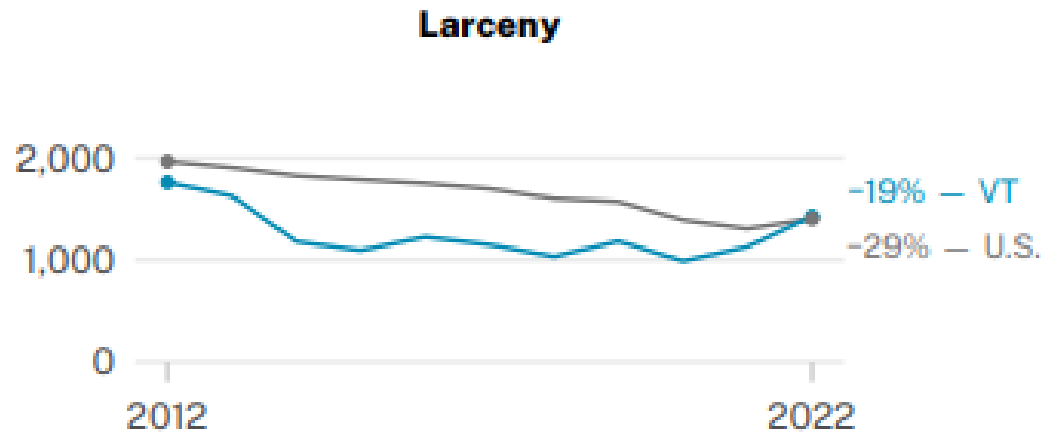
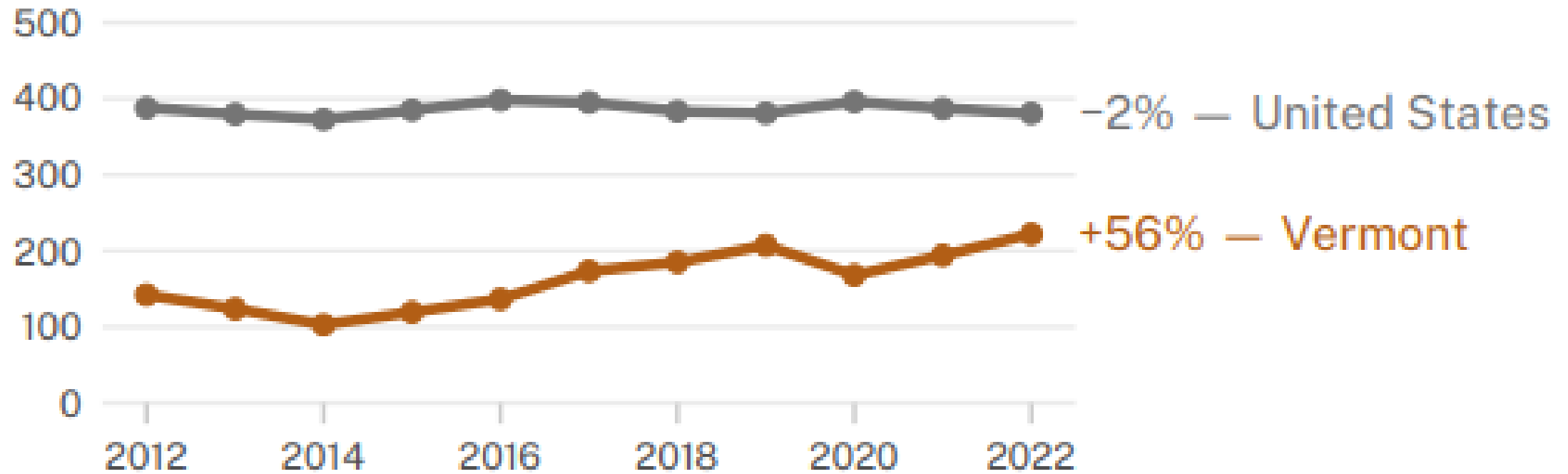


Figure 15. Violent index crime reported to police
Rate per 100k residents



FBI Uniform Crime Reporting Program SRS

Figure 16. Violent index crime reported to police by offense

Rate per 100k residents

