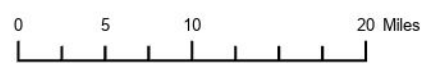
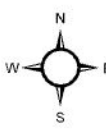


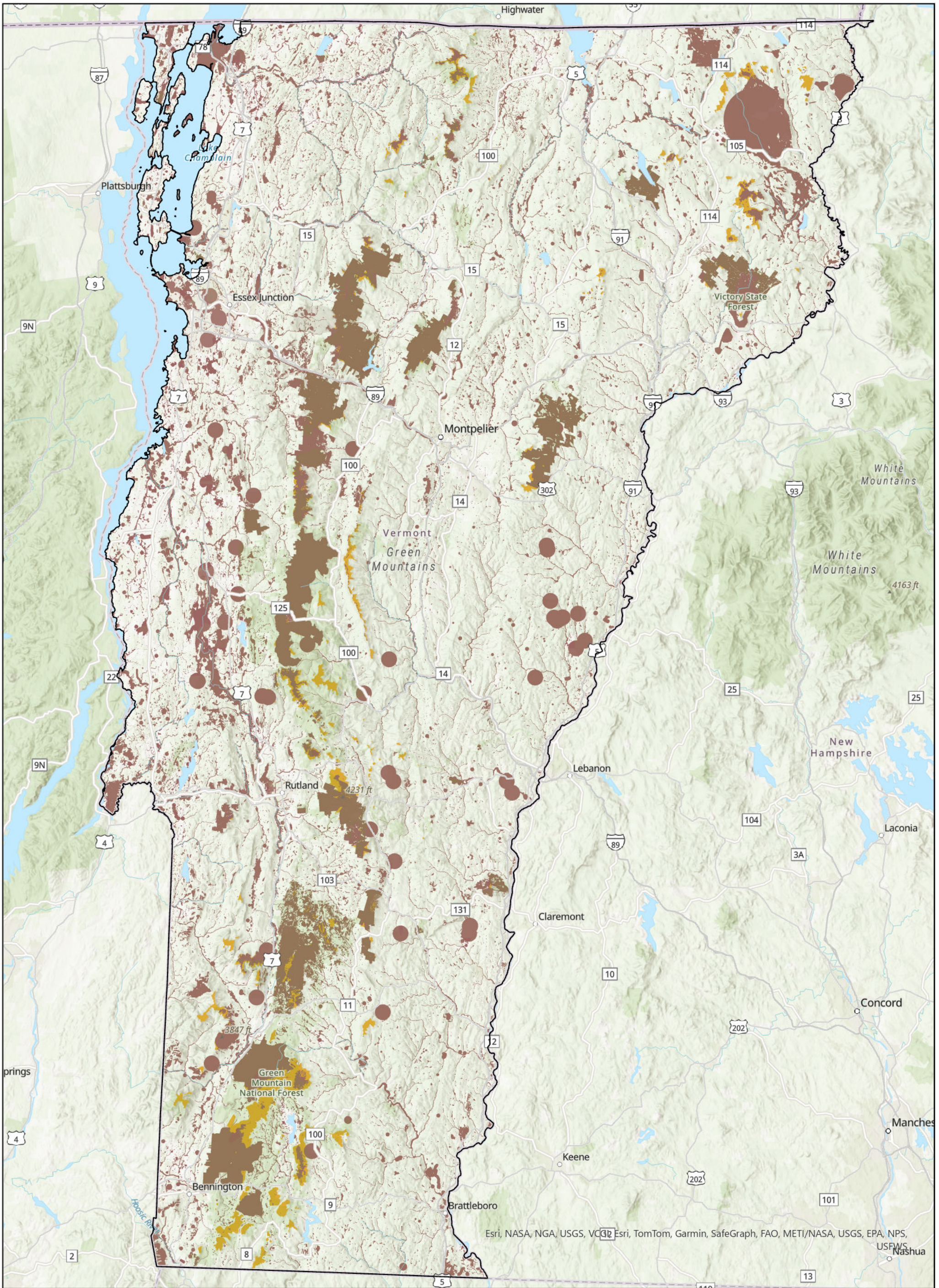
Map 1: State Known Constraints

The presence of known constraints suggests that areas are unsuitable for development based on state regulations. Known Constraints Include: Vermont Significant Wetlands Inventory, VSWI Wetlands Advisory Layer, Confirmed Vernal Pools, FEMA Floodways, DEC River Corridors, Significant Natural Communities, Rare Threatened Endangered Species, and National Wilderness Areas

- Legend**
- Known Constraints
 - State Boundary



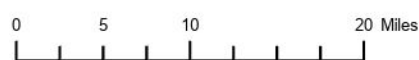
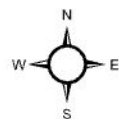
Sources: Known Constraints-VCGI ANR 2022
 Map created by M. Needle using ArcGIS.
 Disclaimer: The accuracy of information presented is determined by its sources. Errors and omissions may exist. The Chittenden County RPC is not responsible for these. Questions of on-the-ground location can be resolved by site inspections and/or surveys by registered surveyor. This map is not sufficient for delineation of features on-the-ground. This map identifies the presence of features, and may indicate relationships between features, but is not a replacement for surveyed information or engineering studies



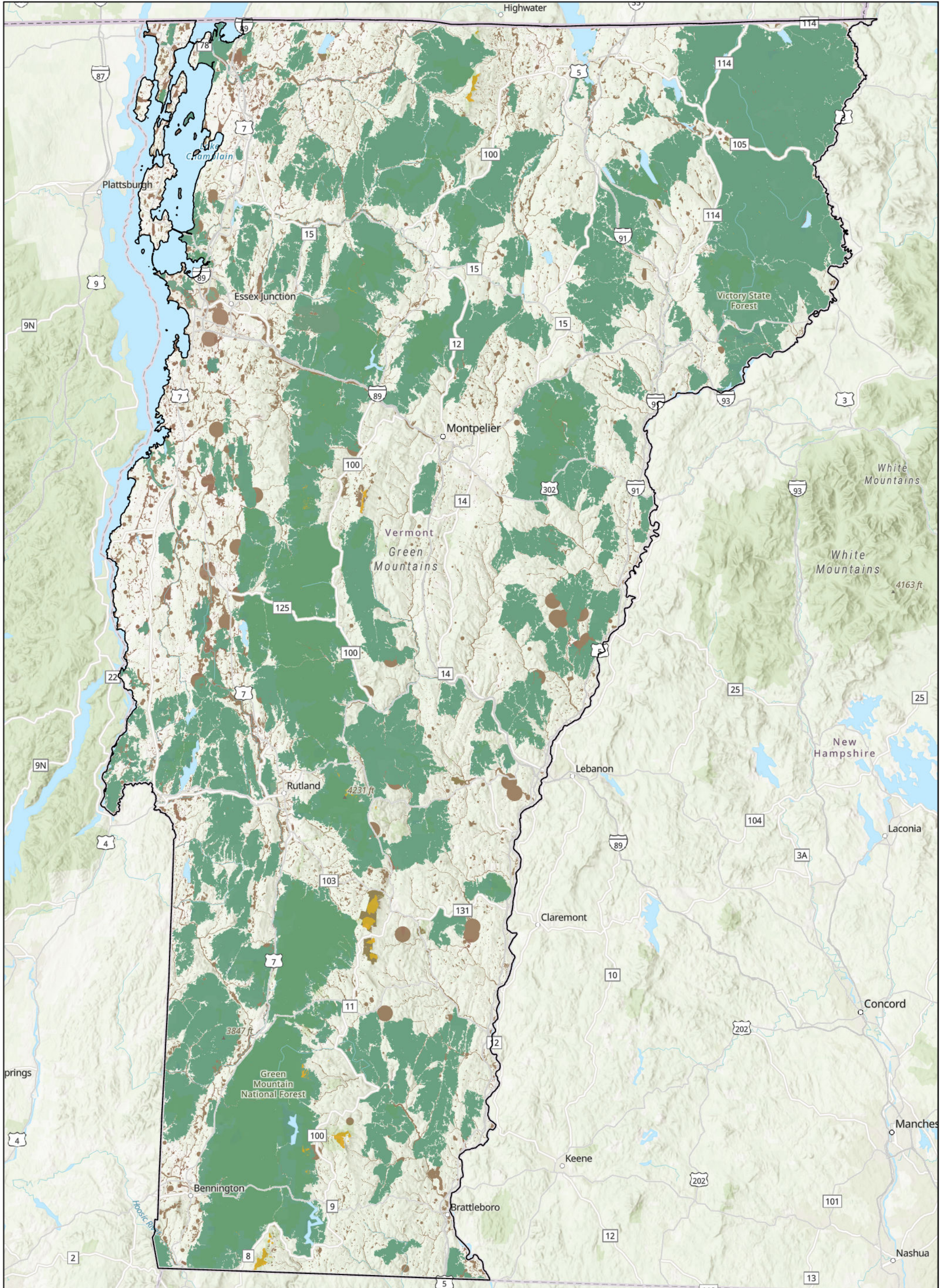
Map 2: State Known Constraints and Areas Above 2,500'

- Legend**
- Known Constraints
 - Elevation Above 2,500 Ft.
 - Vermont Boundary

The presence of known constraints suggests that areas are unsuitable for development based on state regulations. Known Constraints Include: Vermont Significant Wetlands Inventory, VSWI Wetlands Advisory Layer, Confirmed Vernal Pools, FEMA Floodways, DEC River Corridors, Significant Natural Communities, Rare Threatened Endangered Species, and National Wilderness Areas

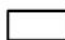





Sources:
 Known Constraints-VCGI.ANR 2022
 Elevation Digitized From USGS Maps- ANR
 Map created by M. Needle using ArcGIS.
 Disclaimer:
 The accuracy of information presented is determined by its sources. Errors and omissions may exist. The Chittenden County RPC is not responsible for these. Questions of on-the-ground location can be resolved by site inspections and/or surveys by registered surveyor. This map is not sufficient for delineation of features on-the-ground. This map identifies the presence of features, and may indicate relationships between features, but is not a replacement for surveyed information or engineering studies

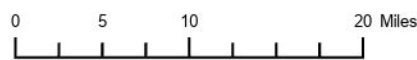
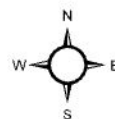


Map 3: State Known Constraints, Areas Above 2,500', and Highest Priority Interior Forest Blocks

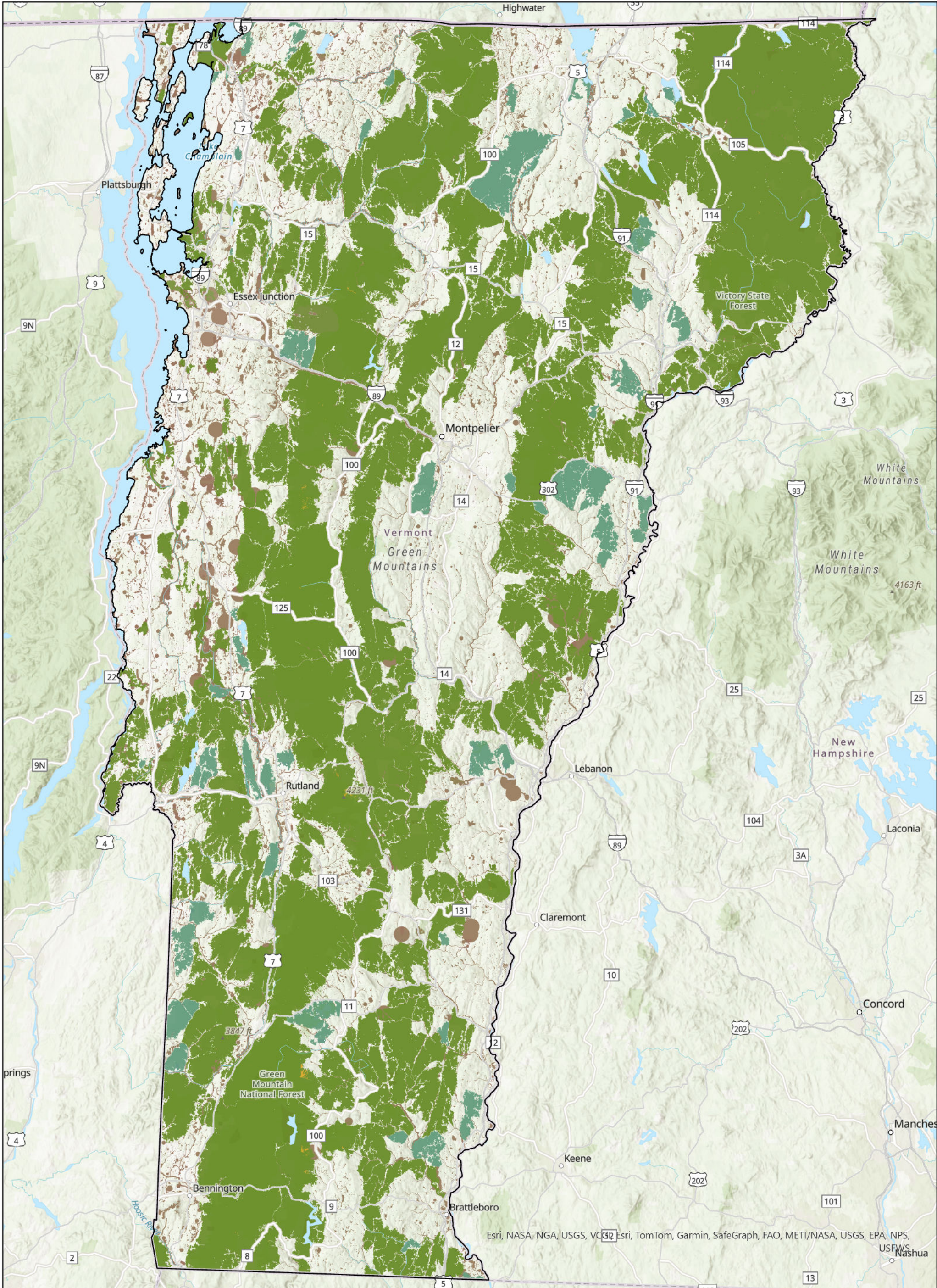
Legend

-  Vermont Boundary
-  Highest Priority Interior Forest Blocks
-  Elevation Above 2,500 Ft.
-  Known Constraints

The presence of known constraints suggests that areas are unsuitable for development based on state regulations.
Known Constraints Include:
 Vermont Significant Wetlands Inventory,
 VSWI Wetlands Advisory Layer, Confirmed Vernal Pools,
 FEMA Floodways, DEC River Corridors, Significant Natural Communities, Rare Threatened Endangered Species,
 and National Wilderness Areas



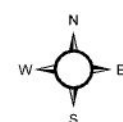
Sources:
 Known Constraints-VCGI.ANR 2022
 Elevation Digitized From USGS Maps- ANR
 VCD Highest Priority Forests-ANR
 Map created by M. Needle using ArcGIS.
 Disclaimer:
 The accuracy of information presented is determined by its sources. Errors and omissions may exist. The Chittenden County RPC is not responsible for these. Questions of on-the-ground location can be resolved by site inspections and/or surveys by registered surveyor. This map is not sufficient for delineation of features on-the-ground. This map identifies the presence of features, and may indicate relationships between features, but is not a replacement for surveyed information or engineering studies



Map 4: State Known Constraints, Areas Above 2,500', Highest Priority Interior Forest Blocks, and Highest Priority Connectivity Blocks

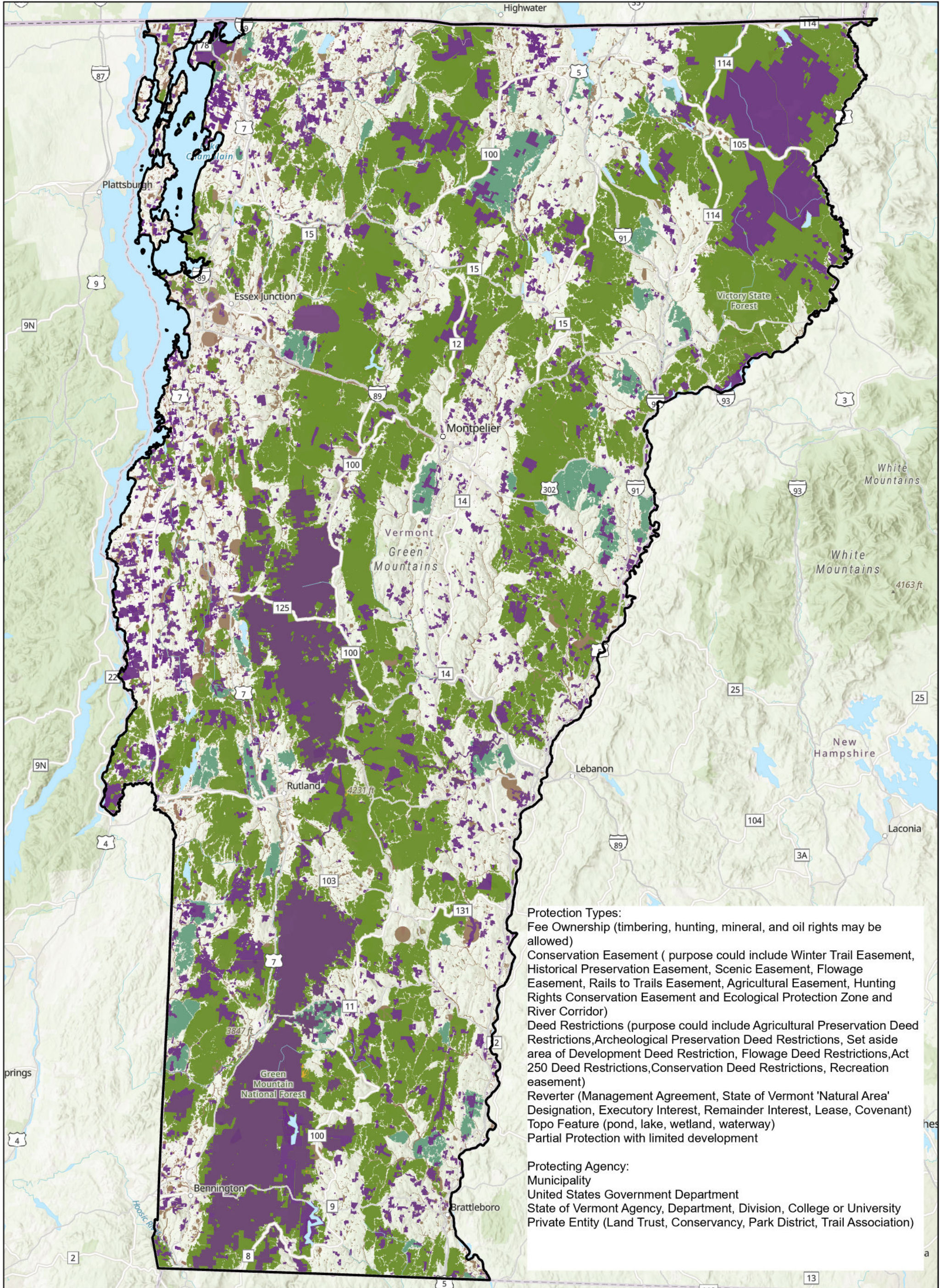
- Legend**
- Vermont Boundary
 - Vermont Highest Priority Connectivity Blocks
 - Highest Priority Interior Forest Blocks
 - Elevation Above 2,500 Ft.
 - Known Constraints

The presence of known constraints suggests that areas are unsuitable for development based on state regulations. Known Constraints Include: Vermont Significant Wetlands Inventory, VSWI Wetlands Advisory Layer, Confirmed Vernal Pools, FEMA Floodways, DEC River Corridors, Significant Natural Communities, Rare Threatened Endangered Species, and National Wilderness Areas



Sources:
 Known Constraints-VCGLANR 2022
 Elevation Digitized From USGS Maps-ANR
 VCD Highest Priority Forests-ANR
 Map created by M. Needle using ArcGIS.

Disclaimer:
 The accuracy of information presented is determined by its sources. Errors and omissions may exist. The Chittenden County RPC is not responsible for these. Questions of on-the-ground location can be resolved by site inspections and/or surveys by registered surveyor. This map is not sufficient for delineation of features on-the-ground. This map identifies the presence of features, and may indicate relationships between features, but is not a replacement for surveyed information or engineering studies



Protection Types:

- Fee Ownership (timbering, hunting, mineral, and oil rights may be allowed)
- Conservation Easement (purpose could include Winter Trail Easement, Historical Preservation Easement, Scenic Easement, Flowage Easement, Rails to Trails Easement, Agricultural Easement, Hunting Rights Conservation Easement and Ecological Protection Zone and River Corridor)
- Deed Restrictions (purpose could include Agricultural Preservation Deed Restrictions, Archeological Preservation Deed Restrictions, Set aside area of Development Deed Restriction, Flowage Deed Restrictions, Act 250 Deed Restrictions, Conservation Deed Restrictions, Recreation easement)
- Reverter (Management Agreement, State of Vermont 'Natural Area' Designation, Executory Interest, Remainder Interest, Lease, Covenant)
- Topo Feature (pond, lake, wetland, waterway)
- Partial Protection with limited development

Protecting Agency:

- Municipality
- United States Government Department
- State of Vermont Agency, Department, Division, College or University
- Private Entity (Land Trust, Conservancy, Park District, Trail Association)

Map 5: State Known Constraints, Areas Above 2,500', Highest Priority Interior Forest Blocks, Highest Priority Connectivity Blocks, and Protected Areas

Legend

- Vermont Boundary
- Area Protected by Federal, State or Municipal or Private Entity
- Highest Priority Connectivity Blocks
- Highest Priority Interior Forest Blocks
- Elevation Above 2,500 Ft.
- Known Constraints

The presence of known constraints suggests that areas are unsuitable for development based on state regulations.

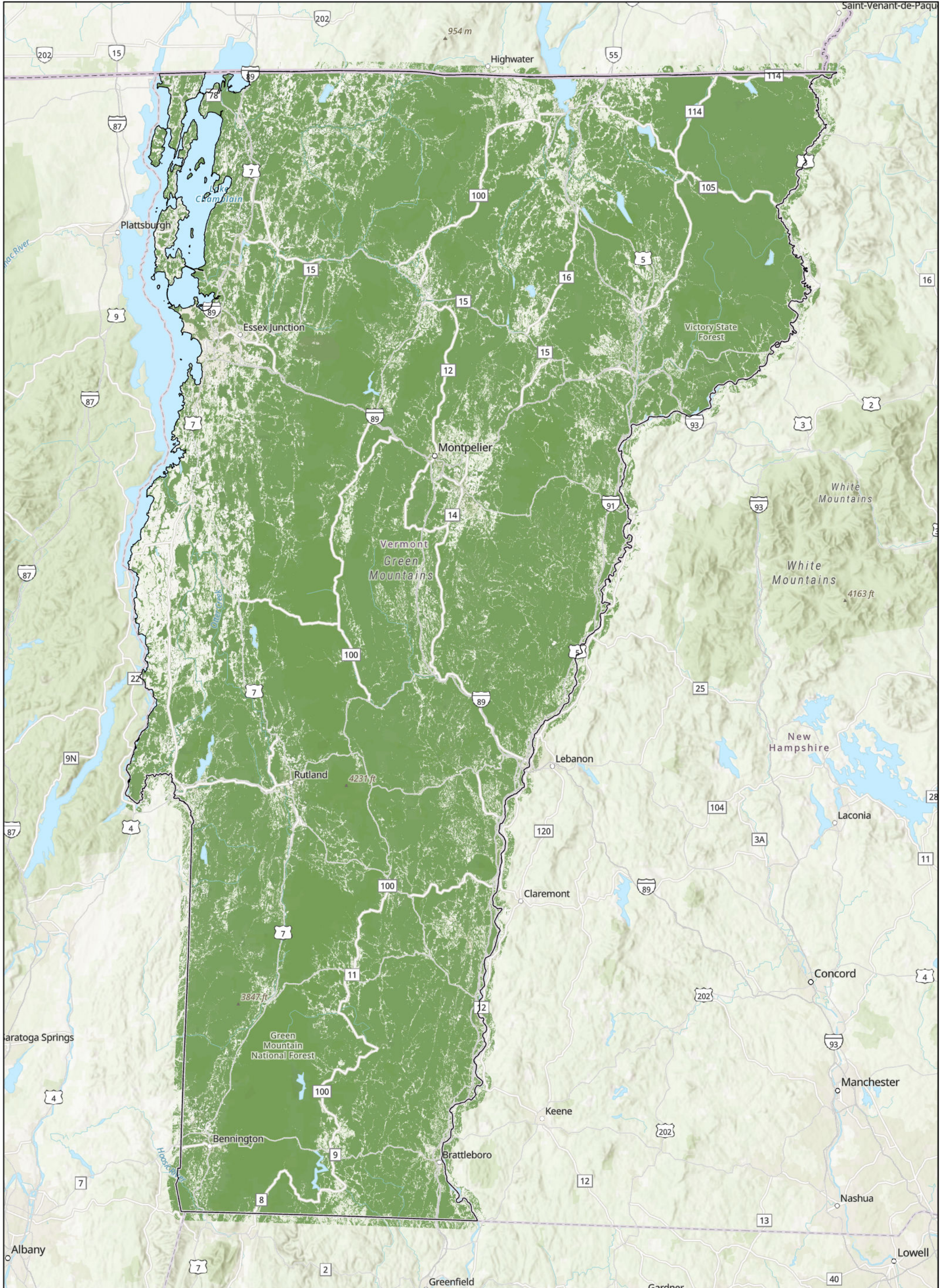
Known Constraints Include:
 Vermont Significant Wetlands Inventory, VSWI Wetlands Advisory Layer, Confirmed Vernal Pools, FEMA Floodways, DEC River Corridors, Significant Natural Communities, Rare Threatened Endangered Species, and National Wilderness Areas

0 5 10 20 Miles

Sources:
 Protected Lands-VCGI
 Known Constraints-VCGI ANR 2022
 Elevation Digitized From USGS Maps-ANR
 VCD Highest Priority Forests-ANR
 Map created by M. Needle using ArcGIS.

Disclaimer:
 The accuracy of information presented is determined by its sources. Errors and omissions may exist. The Chittenden County RPC is not responsible for these. Questions of on-the-ground location can be resolved by site inspections and/or surveys by registered surveyor. This map is not sufficient for delineation of features on-the-ground. This map identifies the presence of features, and may indicate relationships between features, but is not a replacement for surveyed information or engineering studies

CHITTENDEN COUNTY RPC
 Communities Planning Together



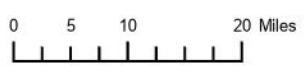
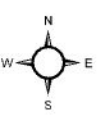
Map 6: Critical Resource Areas

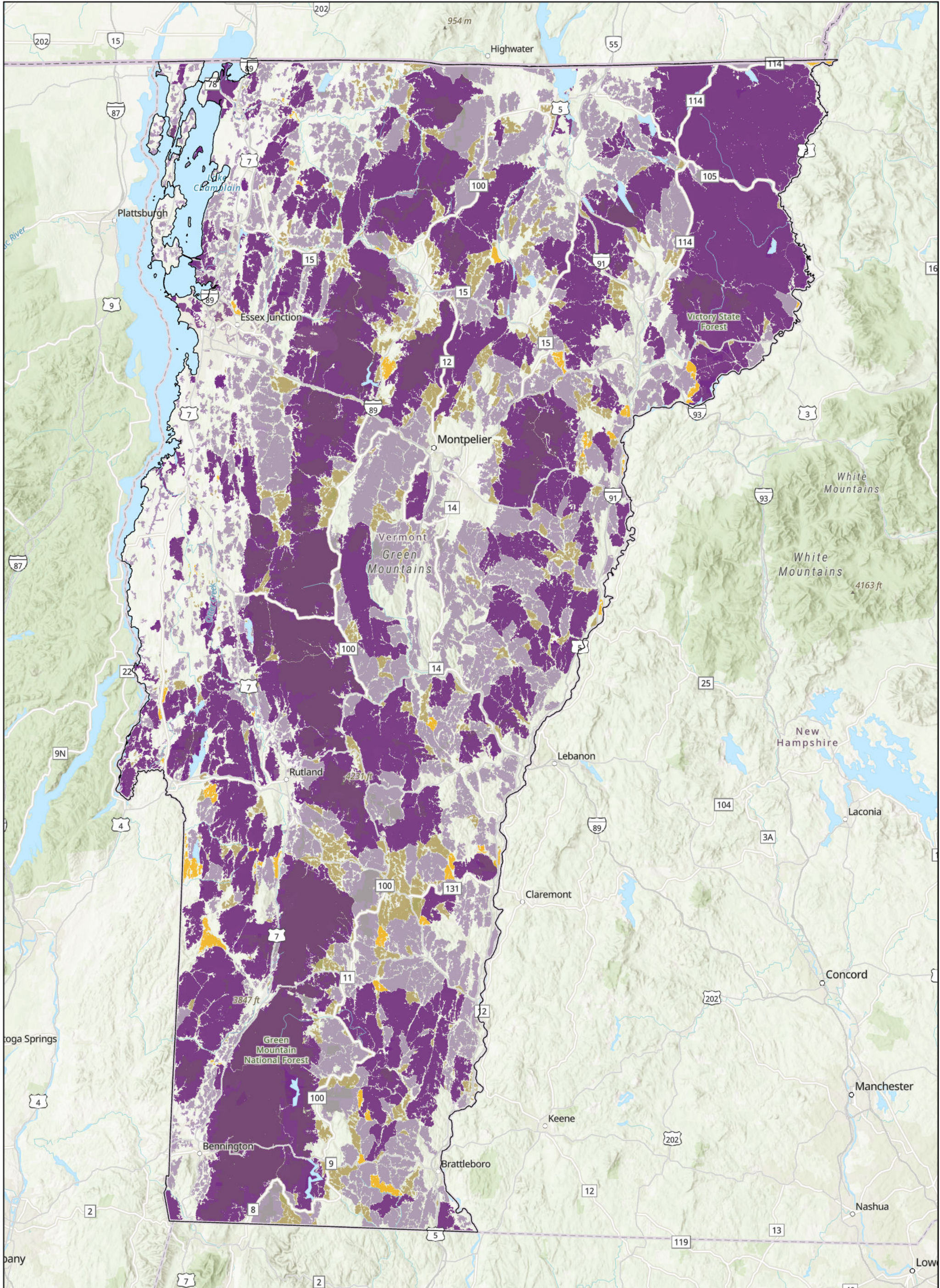
Legend

All Critical Resource Areas

Critical Resource Areas Include:
 River Corridor
 VSWI + Advisory Wetlands
 Land at Above 2,000 ft
 Steep Slope greater than 15%
 Prime Ag Soils
 Highest Priority Interior Forest Blocks
 Highest Priority Connectivity Forest Blocks
 Priority Connectivity Forest Blocks
 Priority Interior Forest Blocks

Sources:
 Protected Lands-VCGI
 Known Constraints-VCGI ANR 2022
 Elevation Digitized From USGS Maps-ANR
 VCD Highest Priority Forests-ANR
 Map created by M. Needle using ArcGIS.
 Disclaimer:
 The accuracy of information presented is determined by its sources. Errors and omissions may exist. The Chittenden County RPC is not responsible for these. Questions of on-the-ground location can be resolved by site inspections and/or surveys by registered surveyor. This map is not sufficient for delineation of features on-the-ground. This map identifies the presence of features, and may indicate relationships between features, but is not a replacement for surveyed information or engineering studies.





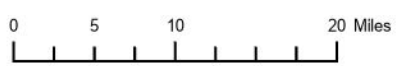
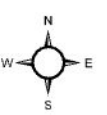
Map 7: Wildlife Habitat Areas

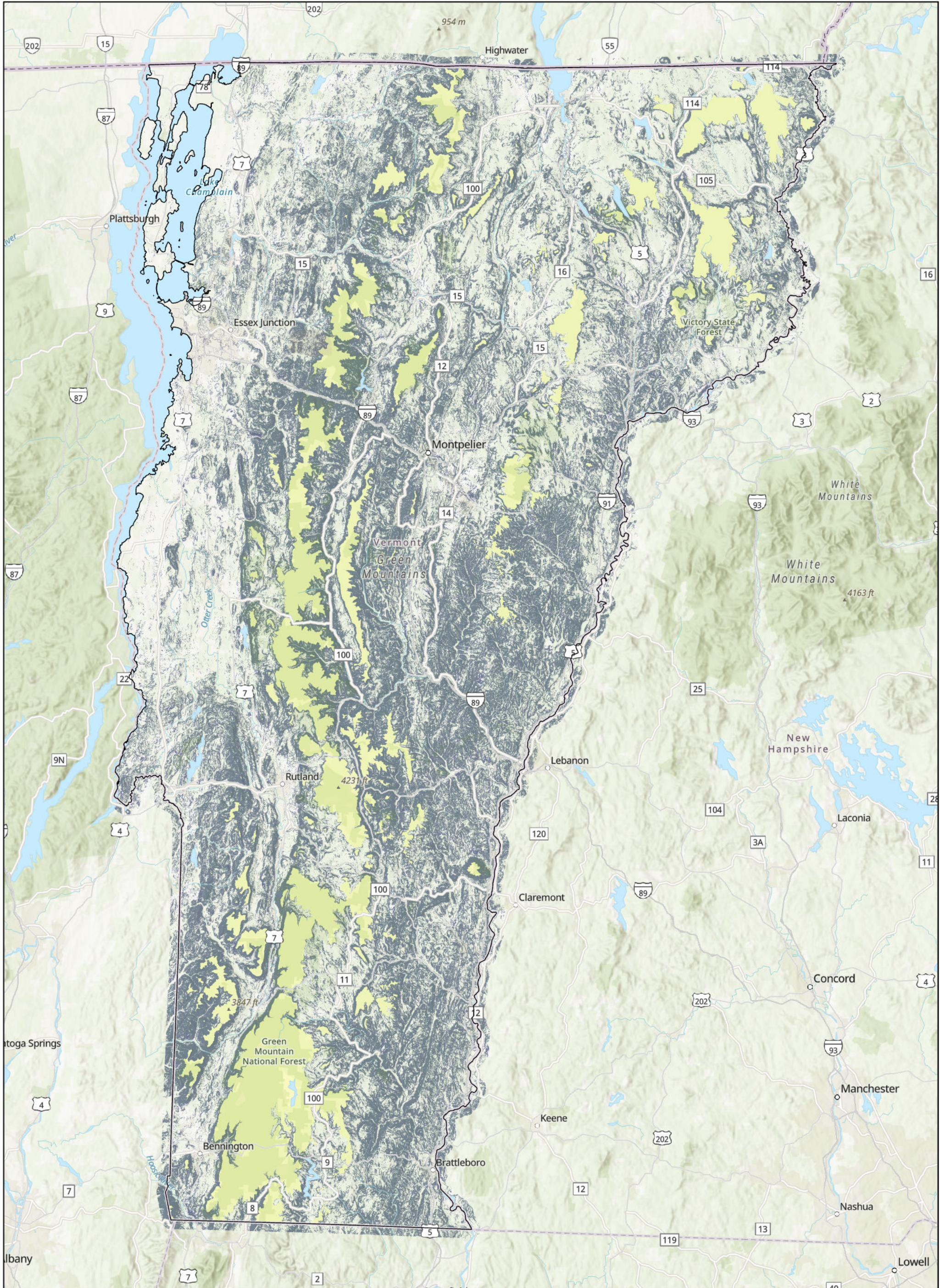
- | | | |
|---|---------------------------------|--------------------------------------|
| Interior Forest Blocks | Priority Interior Forest Blocks | Priority Connectivity Blocks |
| Highest Priority Interior Forest Blocks | Connectivity Forest Blocks | Highest Priority Connectivity Blocks |

Interior Forest blocks are areas of contiguous forest and other natural communities and habitats, such as wetlands, ponds, and cliffs, that are unfragmented by roads, development, or agriculture.

Connectivity Forest Blocks allows wide-ranging animals to move across their range, allows animals to find suitable habitat for their daily and annual life needs, allows young animals to disperse, allows plant and animal species to colonize new and appropriate habitat as climate and land uses change

Sources:
VCD Highest Priority and Priority Forests-ANR
Map created by M. Needle using ArcGIS.
Disclaimer:
The accuracy of information presented is determined by its sources. Errors and omissions may exist. The Chittenden County RPC is not responsible for these. Questions of on-the-ground location can be resolved by site inspections and/or surveys by registered surveyor. This map is not sufficient for delineation of features on-the-ground. This map identifies the presence of features, and may indicate relationships between features, but is not a replacement for surveyed information or engineering studies





Map 8 : Slope Greater than 15% and Land Above 2,000 ft.

Legend

- Elevation at or above 2,000 ft.
- Slope greater than 15%

Map created by M. Needle using ArcGIS.
 Disclaimer:
 The accuracy of information presented is determined by its sources. Errors and omissions may exist. The Chittenden County RPC is not responsible for these. Questions of on-the-ground location can be resolved by site inspections and/or surveys by registered surveyor. This map is not sufficient for delineation of features on-the-ground. This map identifies the presence of features, and may indicate relationships between features, but is not a replacement for surveyed information or engineering studies.

