



Women's Correctional & Reentry Center

August 28, 2024

CRCF: Current Conditions



Evidence-Based Design



Evidence-Based Design

1 SENSORY BOUNDARIES

Differentiation in ceiling materials, like wood, will add warmth, resonate sound and texture and provide differentiation of space

2 IDENTITY ANCHORS

Mural of local landscape to create sense of place and connection to nature.

3 NESTED LAYERS

Varying types of non-institutional furniture to break up large space into smaller intimate spaces.



Evidence-Based Design



Davidson County - Downtown Detention Center

Scandinavian Correctional Facilities



Halden Prison, Norway



Scandinavian Correctional Facilities



Halden Prison, Norway



River Valley Therapeutic Residence



River Valley Therapeutic Residence



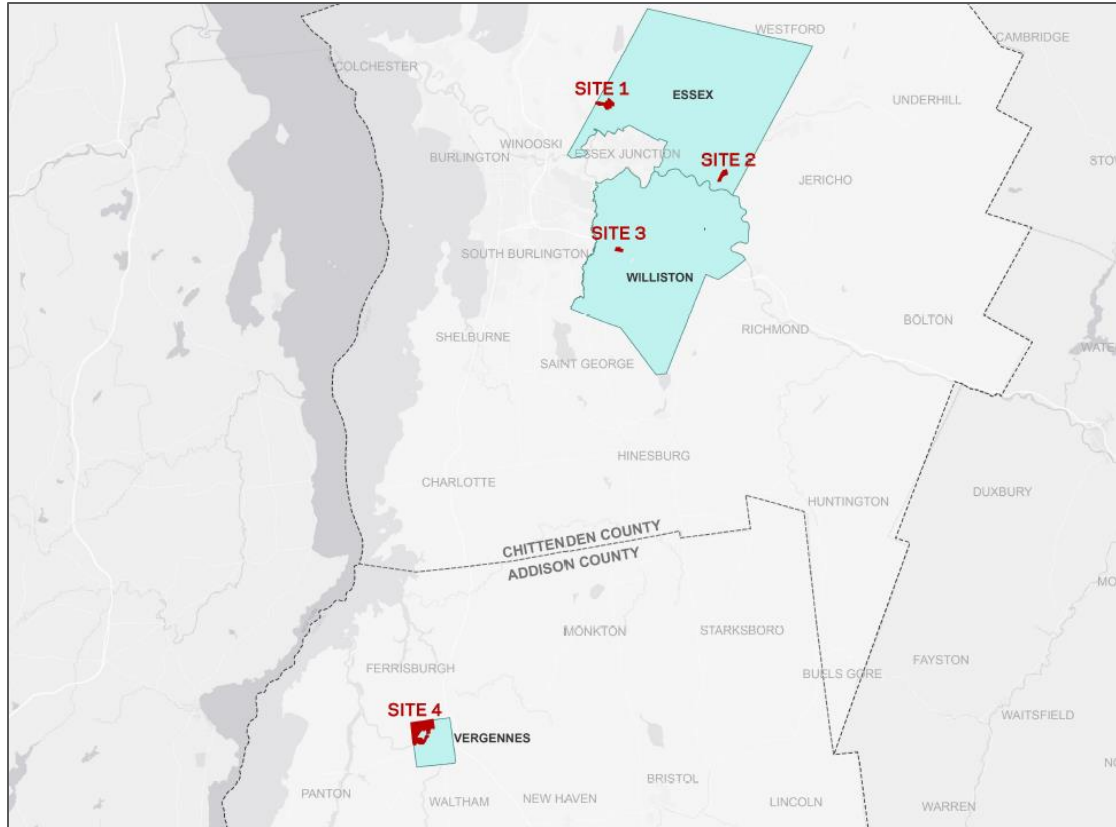
Site Criteria



DOC prioritized locating the facility in the greater Chittenden County area to:

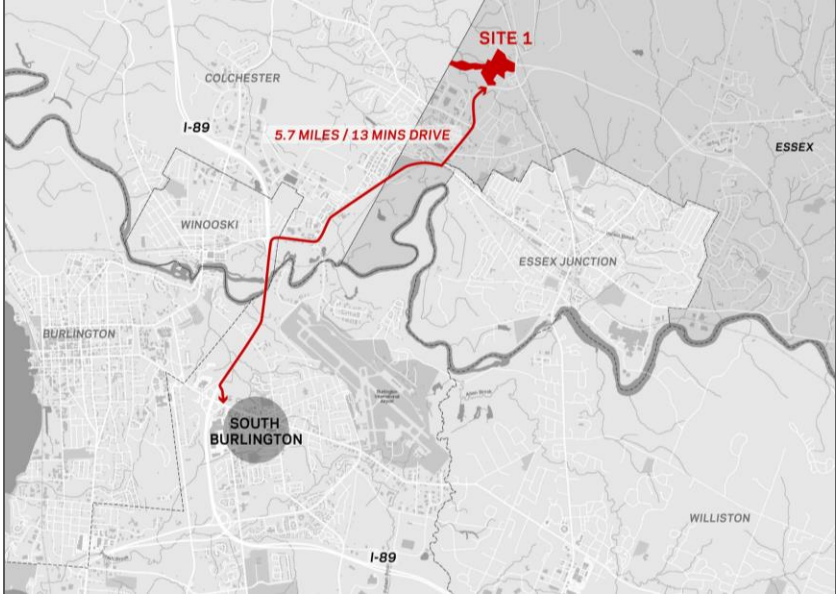
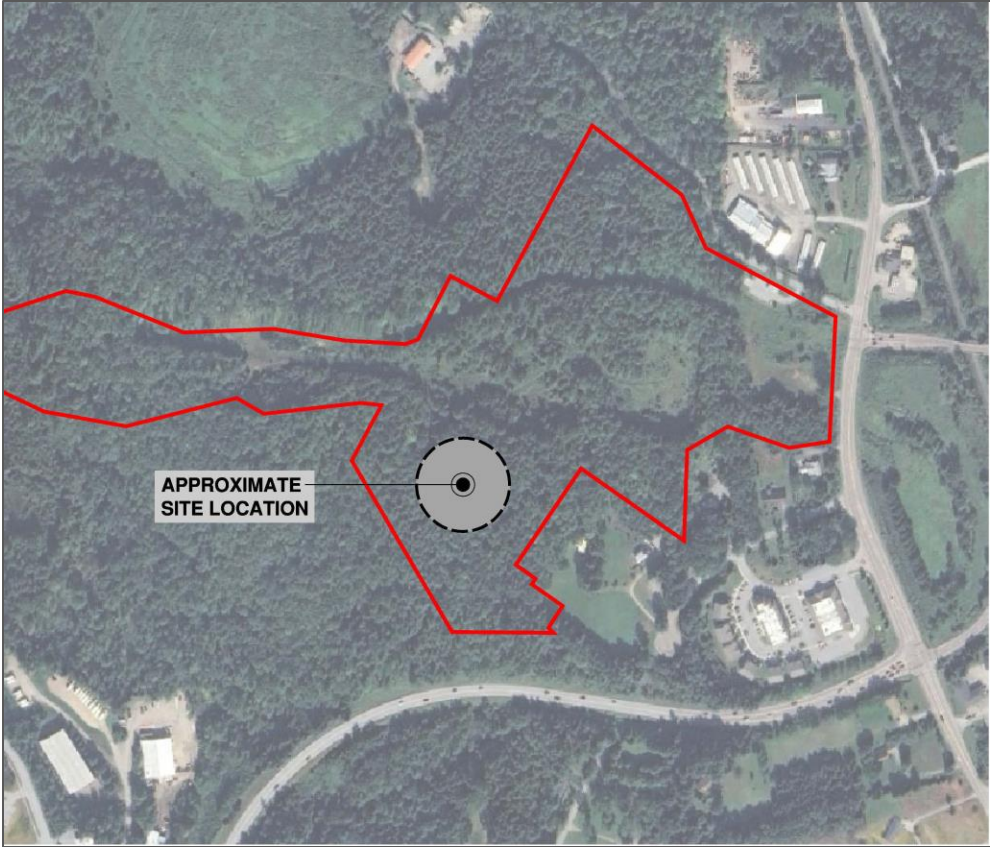
- Preserve critical partnerships with community organizations located in the Burlington area
- Be located near employment options for women in the reentry program
- Support connection to family and loved ones for people who are incarcerated
- Be conveniently located near public transportation
- Limit the burden of relocation on current CRCF staff, retain staff trained in trauma informed and gender responsive practices, and help ensure access to future workforce

Statewide Site Search: 165+ Sites



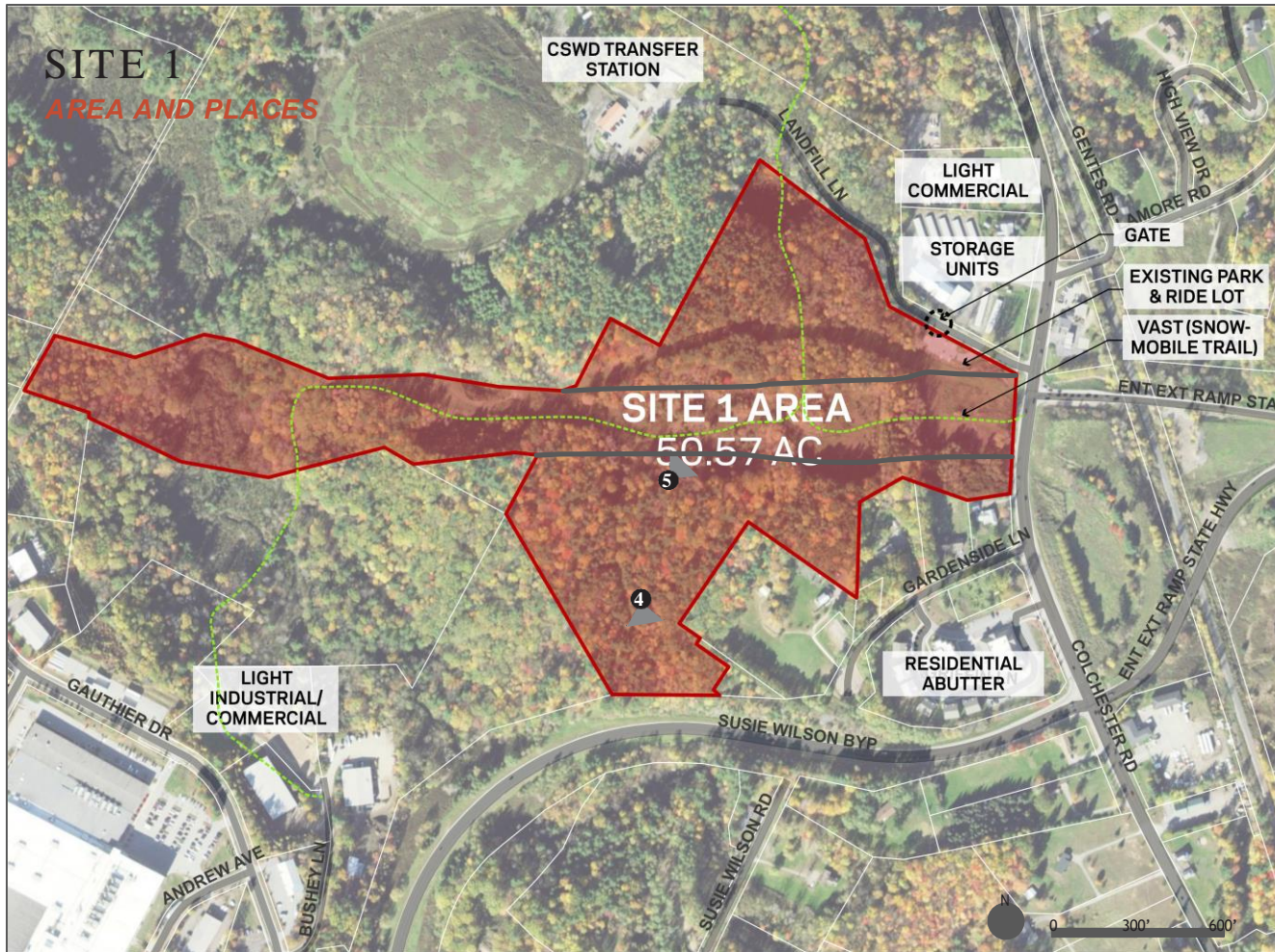
- Vetted properties owned by any State agency (140 sites)
- Worked with real estate consultant (5 sites)
- Conducted a publicly advertised statewide site search (20 sites)

Conceptual Diagram



SITE 1

AREA AND PLACES

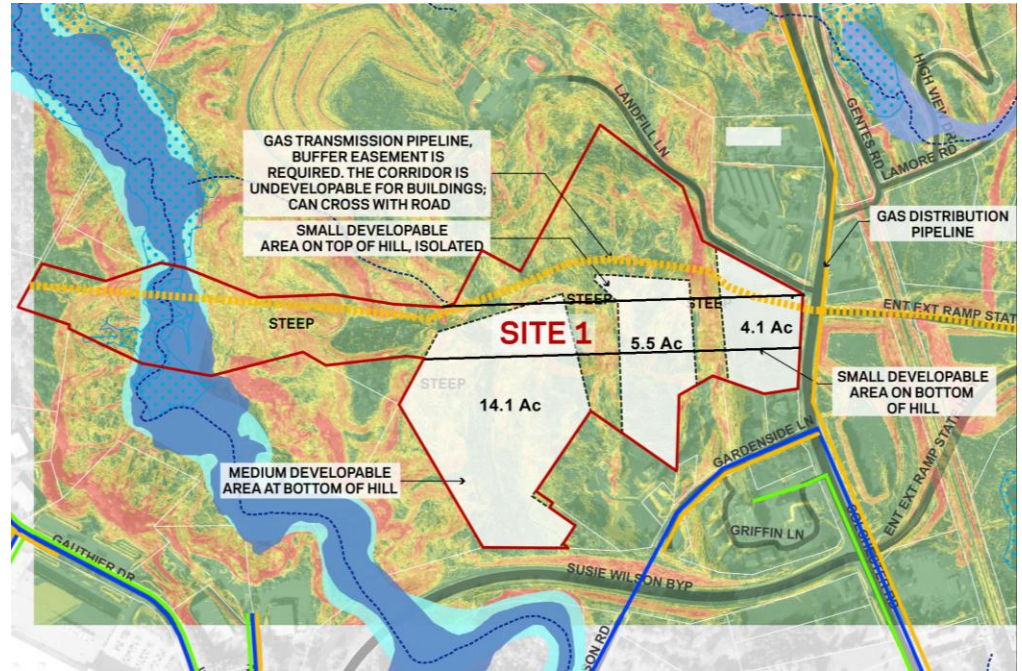


SITE 1

OVERALL EVALUATION

SITE 1			
SITE INFORMATION			
SITE AREA	50.6 Acre		
DEVELOPABLE AREA (Exclude Floodplain, NWI, and Steep slopes)	23.7 Acre	In separate areas, 14.1 ac, 5.5 ac and 4.1 ac.	
PLANNING EVALUATION			
PLANNING CRITERIA	EVALUATION	NOTES	
1 Site Location	●	<ul style="list-style-type: none"> - 13 mins drive from Burlington metropolitan. Residential neighbors to south. Western view. Close to VT289. 	
2 Site Area	●	<ul style="list-style-type: none"> Site total area is 50.6 ac. 	
3 Accessibility	●	<ul style="list-style-type: none"> Direct connection to downtown via Lincoln St. Public transit available. Access from either are a is best from Landfill Lane which is a private drive with gate. 	
4 Hydrological Condition	●	<ul style="list-style-type: none"> Wetland, 1% and 0.2% annual floodplain are noted on the site, but have little to no effect on the noted developable areas. 	
5 Topographics	●	<ul style="list-style-type: none"> Steep slopes dominate most of the site. Steep hill through east side of site. 	
6 Environmental Impact	●	<ul style="list-style-type: none"> Forests, habitats on site, high biological and conservation value according to VNH rating. From site walk through observation, the developable areas have medium to low conservation value. Transmission pipeline runs right through the site and parcel is surrounded by light commercial/industrial neighbors, a landfill, and a Class 2 highway. 	
7 Developable Area	●	<ul style="list-style-type: none"> Small developable area on top of hill and east of the hill. Medium developable parcel in the south portion possibly accessible by Susie Wilson Byp. Possible ledge at hill. Gas transmission pipeline running E/W through the site, and undevelopable easement buffer is required. VAST (undevelopable) land crosses property. 	
8 Available Utilities	●	<ul style="list-style-type: none"> Water/sewer/gas about site. 	

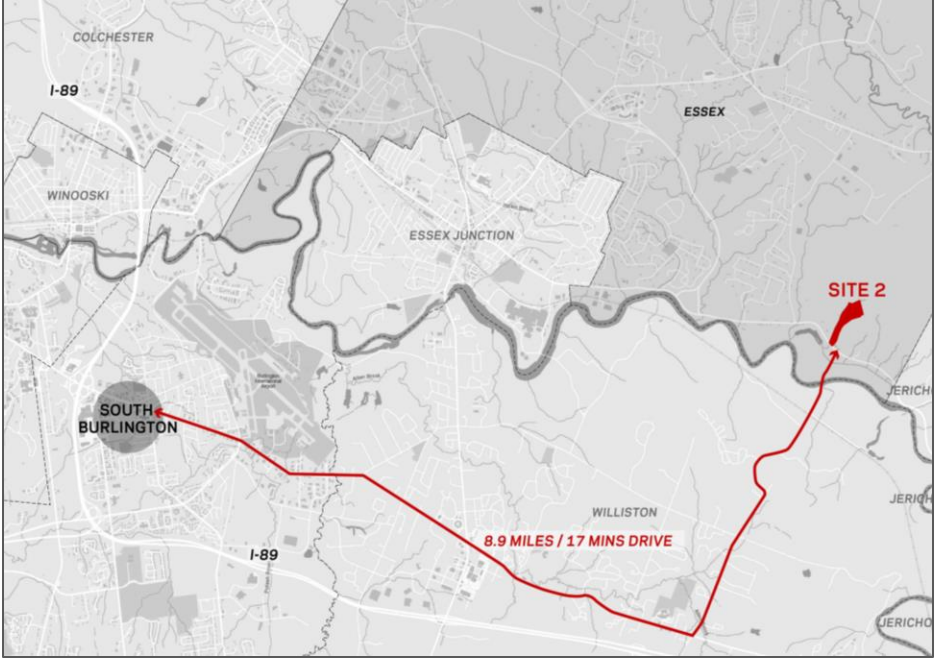
● Bad ● Neutral ● Good



LEGEND

--- DEVELOPABLE AREA

Potential Essex Sites: Site 2



Potential Essex Sites: Site 2

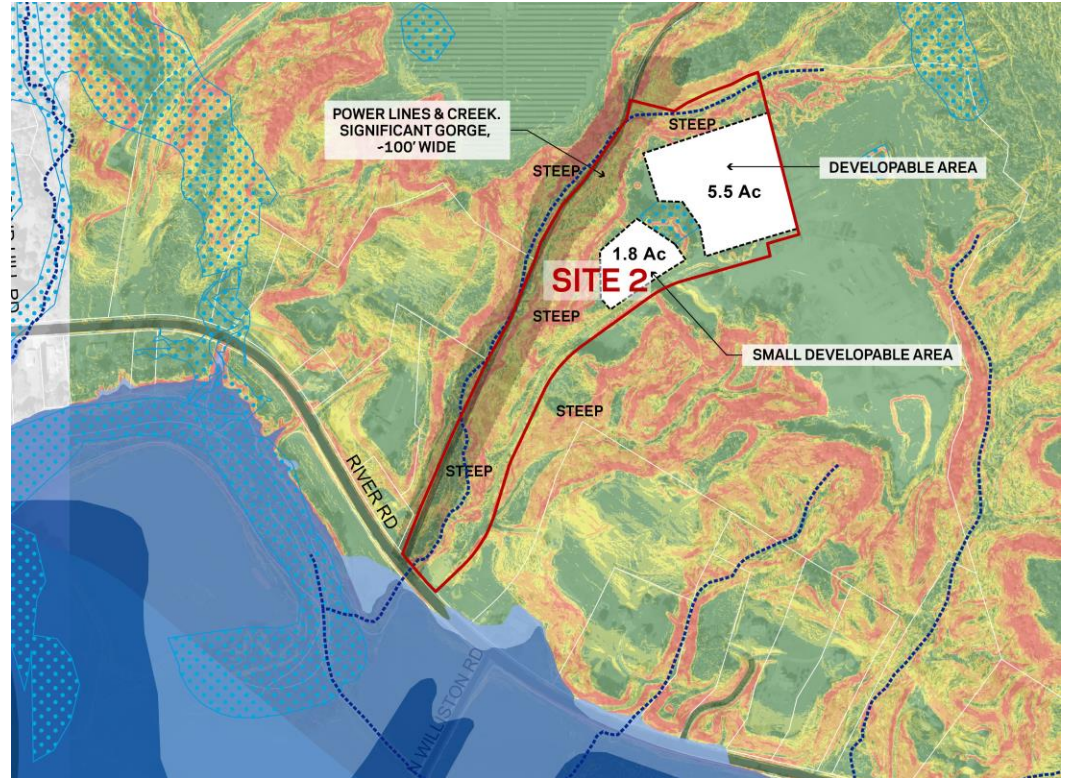


SITE 2

OVERALL EVALUATION

SITE 2		
SITE INFORMATION		
SITE AREA	24.9 Acre	
DEVELOPABLE AREA (Exclude Floodplain, NWI, and Steep slopes)	7.3 Acre	
PLANNING EVALUATION		
PLANNING CRITERIA	EVALUATION	NOTES
1 Site Location	●	<ul style="list-style-type: none"> -17 mins drive from Burlington metropolitan. Site location is not far from a Park and Ride location at Exit 11. Few residential neighbors, far from possible site. Southern view.
2 Site Area	●	<ul style="list-style-type: none"> Site total area is small and narrow
3 Accessibility	●	<ul style="list-style-type: none"> Short frontage along River Rd. can fit only 1 entrance/exit Shared access with construction company storage yard/sand pit. Existing road needs to be upgraded and widened. Class 1 to 89.
4 Hydrological Condition	●	<ul style="list-style-type: none"> Wetland on site. Flat site is wet.
5 Topographics	●	<ul style="list-style-type: none"> Steep slopes dominate most of the site. Steep access, current single lane driveway with steep pitches on both sides.
6 Environmental Impact	●	<ul style="list-style-type: none"> Forests, habitats on site, high biological and conservation value
7 Developable Area	●	<ul style="list-style-type: none"> Small flat pads suitable for development, and the flat pad is wet.
8 Available Utilities	●	<ul style="list-style-type: none"> Utilities are available at Sand Hill Rd. approximately 1/2 mile extension. Site within sewer allocation area.

● Bad ● Neutral ● Good



LEGEND

--- DEVELOPABLE AREA

Summer/Fall 2024



Completed

- ✓ Engagement with Essex Town and legislative leadership
- ✓ Announcement to DOC stakeholder group of focus on two sites in Essex
- ✓ Request to Essex Planning Commission
- ✓ Presentation to Essex Planning Commission
- ✓ Presentations to current CRCF residents

Upcoming

- Public community session hosted by service providers & Essex Community Justice Center
- DOC/BGS public outreach and listening sessions
- Planning Commission and Selectboard consideration of rezoning proposal
- Planning Commission public comment
- Continuing site analysis to evaluate potential suitability
- If suitable and permitted, continued planning, permitting, and review (3-5 years)
- Capital bill request for building construction

DOC Community Investment



This year, DOC allocated more than **\$11,000,000** in community-based services, programs, and alternatives to incarceration, including:

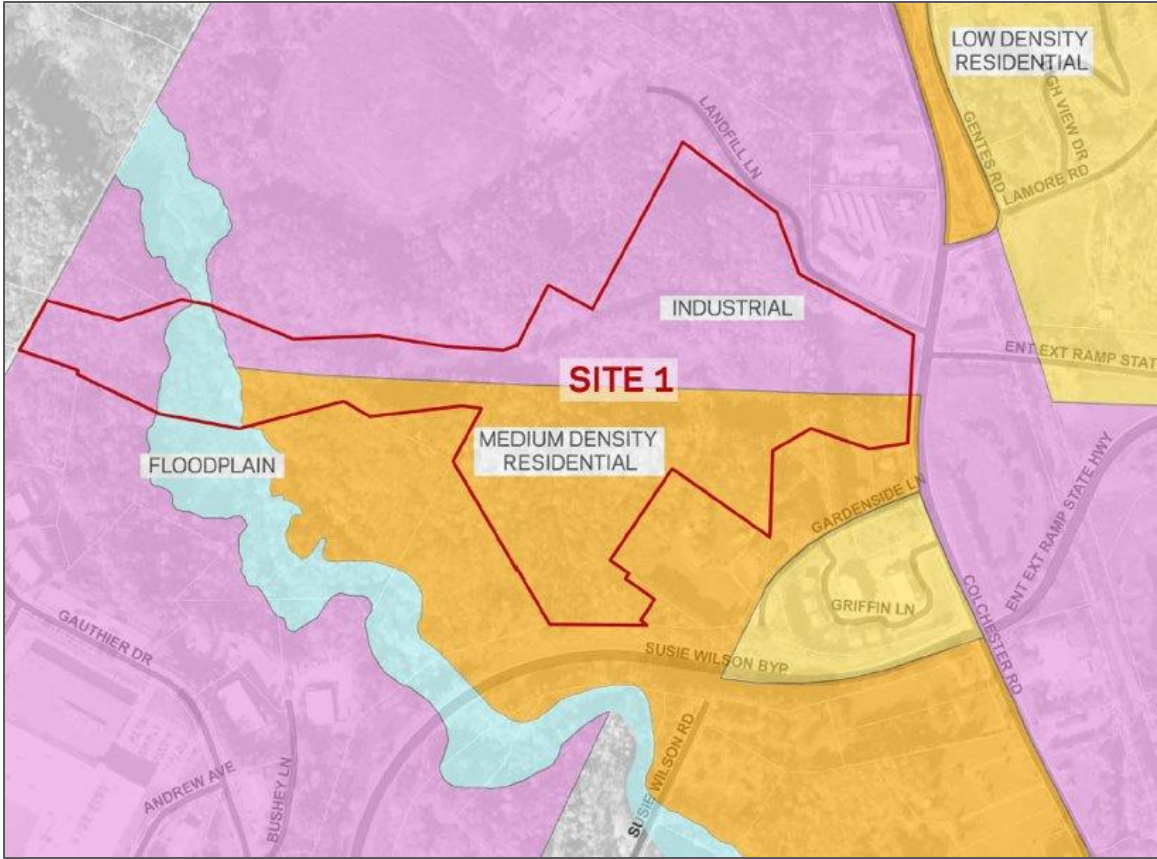
- **\$6,364,748** for transitional housing (Pathways, Burlington Housing Authority)
- **\$3,706,338** to Community Justice Centers across Vermont
- **\$1,060,000** for community recovery centers (Turning Points) for in-reach recovery coaching at all correctional facilities and probation and parole
- **\$714,516** granted to CRCF providers (Vermont Network DIVAS program, Vermont Works for Women, Lund Kids-A-Part, Mercy Connections) for trauma-informed counseling and mentoring, child visitation, and vocational training
- **\$240,952** for Jenna's Promise reentry support, housing-first recovery model, and vocational training

When the facility opens, Vermont will have spent more on alternatives to incarceration than the cost of the CRCF replacement.



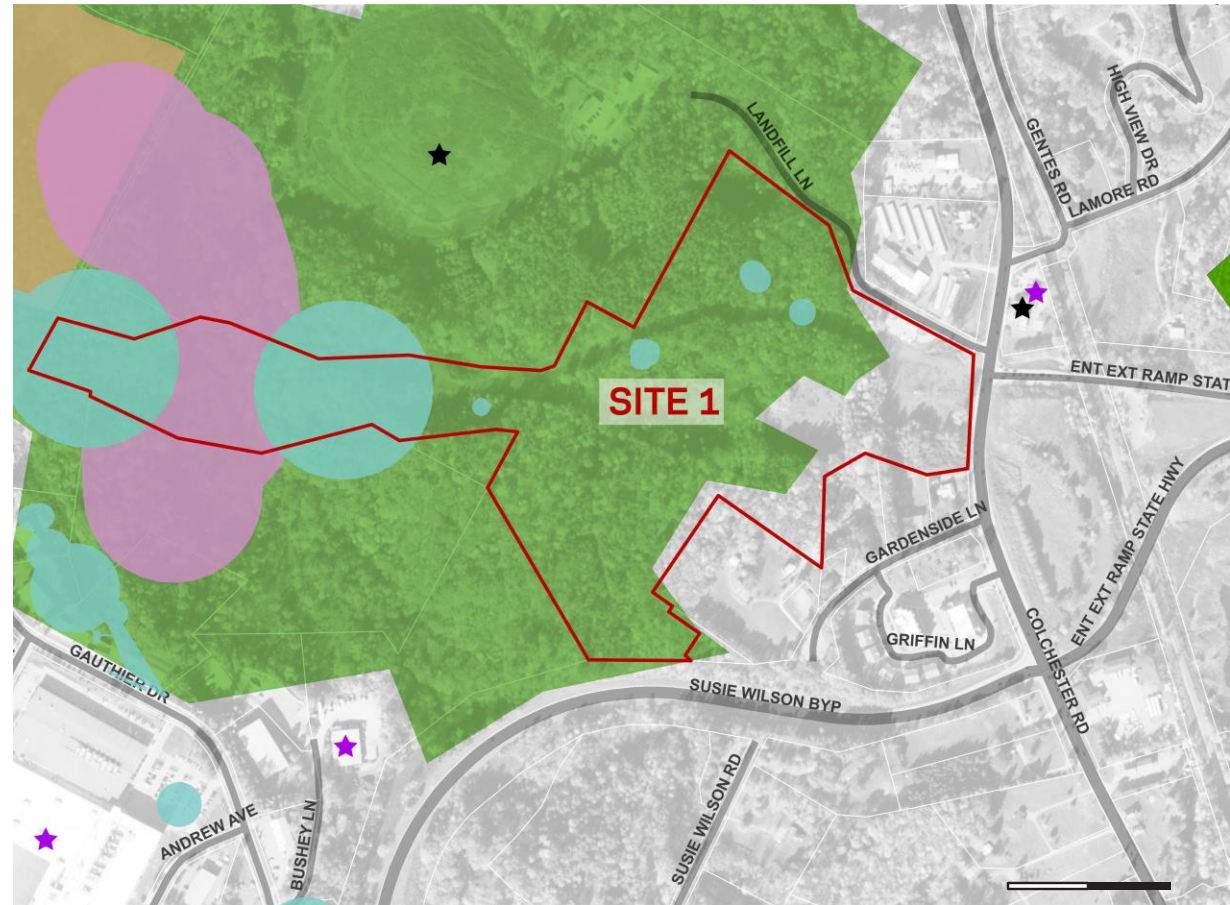
Appendix

Potential Essex Sites: Site 1



SITE 1

ENVIRONMENTAL IMPACT



LEGEND

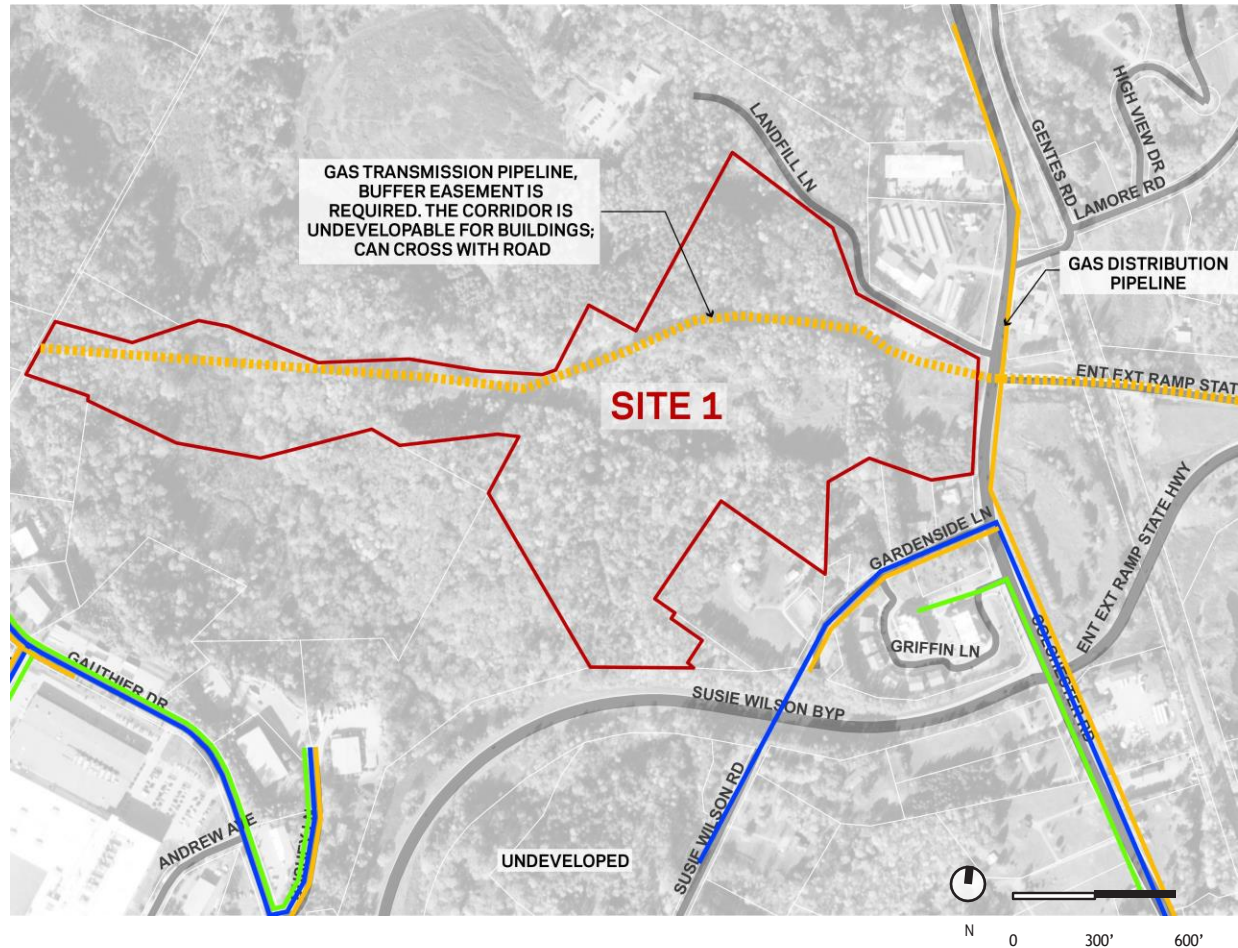
- HABITAT BLOCKS & WILDLIFE CORRIDORS - HIGH VALUE
- RARE, THREATENED & ENDANGERED SPECIES - ANIMAL
- RARE, THREATENED & ENDANGERED SPECIES - PLANT
- SIGNIFICANT NATURAL COMMUNITY
- HAZARDOUS SITE
- HAZARDOUS WASTE GENERATOR



0 300' 600'

SITE 1

UTILITIES

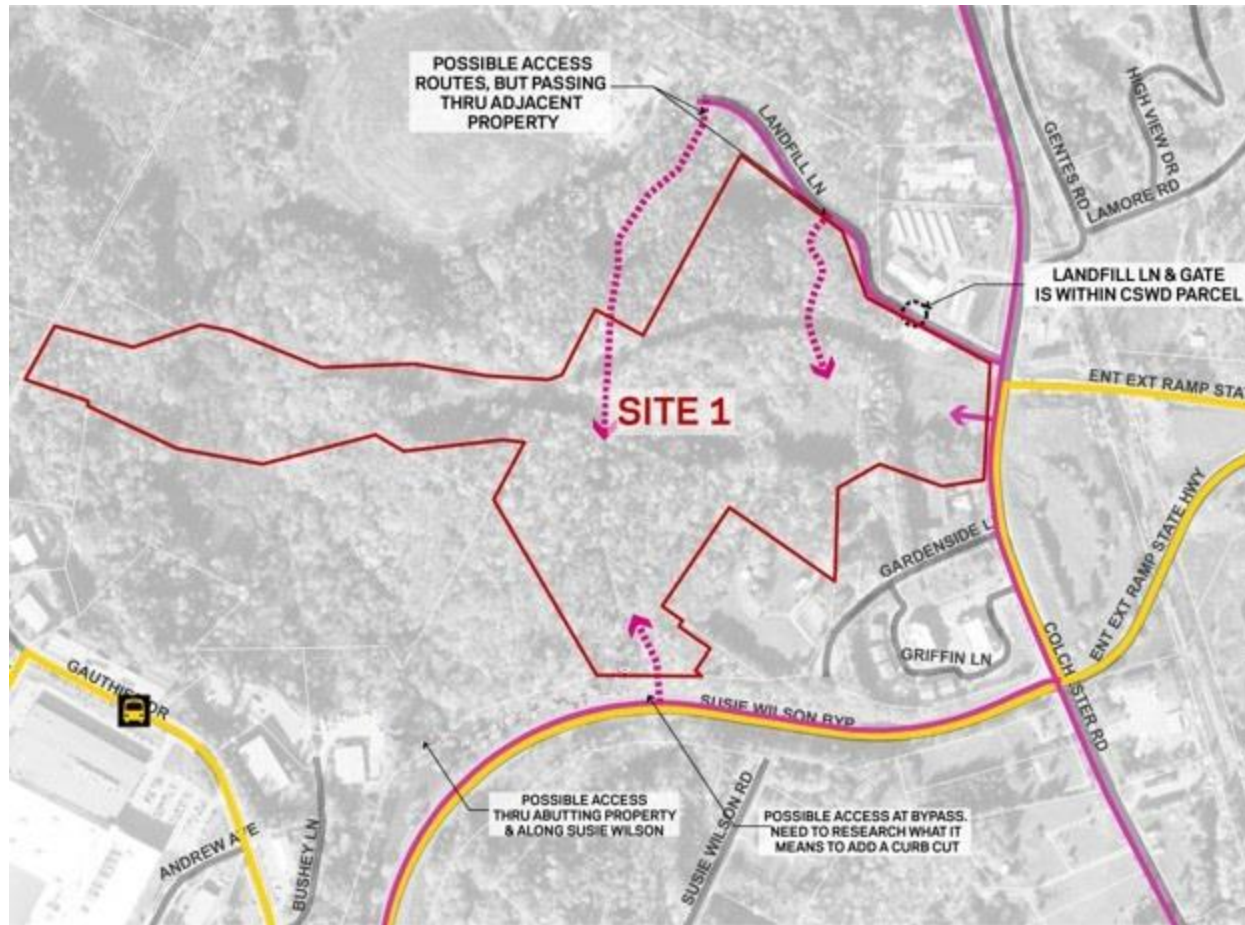


LEGEND



-  GAS
-  WATER
-  SEWER

SITE 1

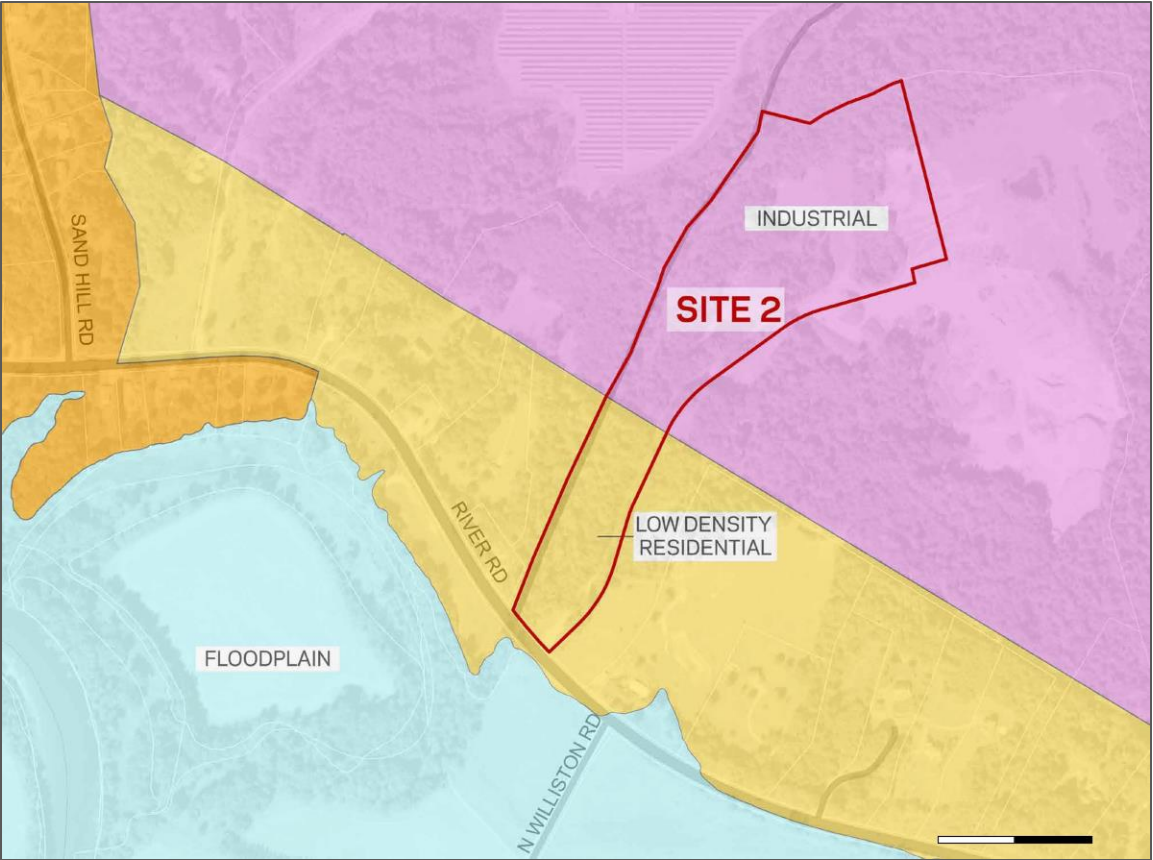
ACCESSIBILITY



LEGEND

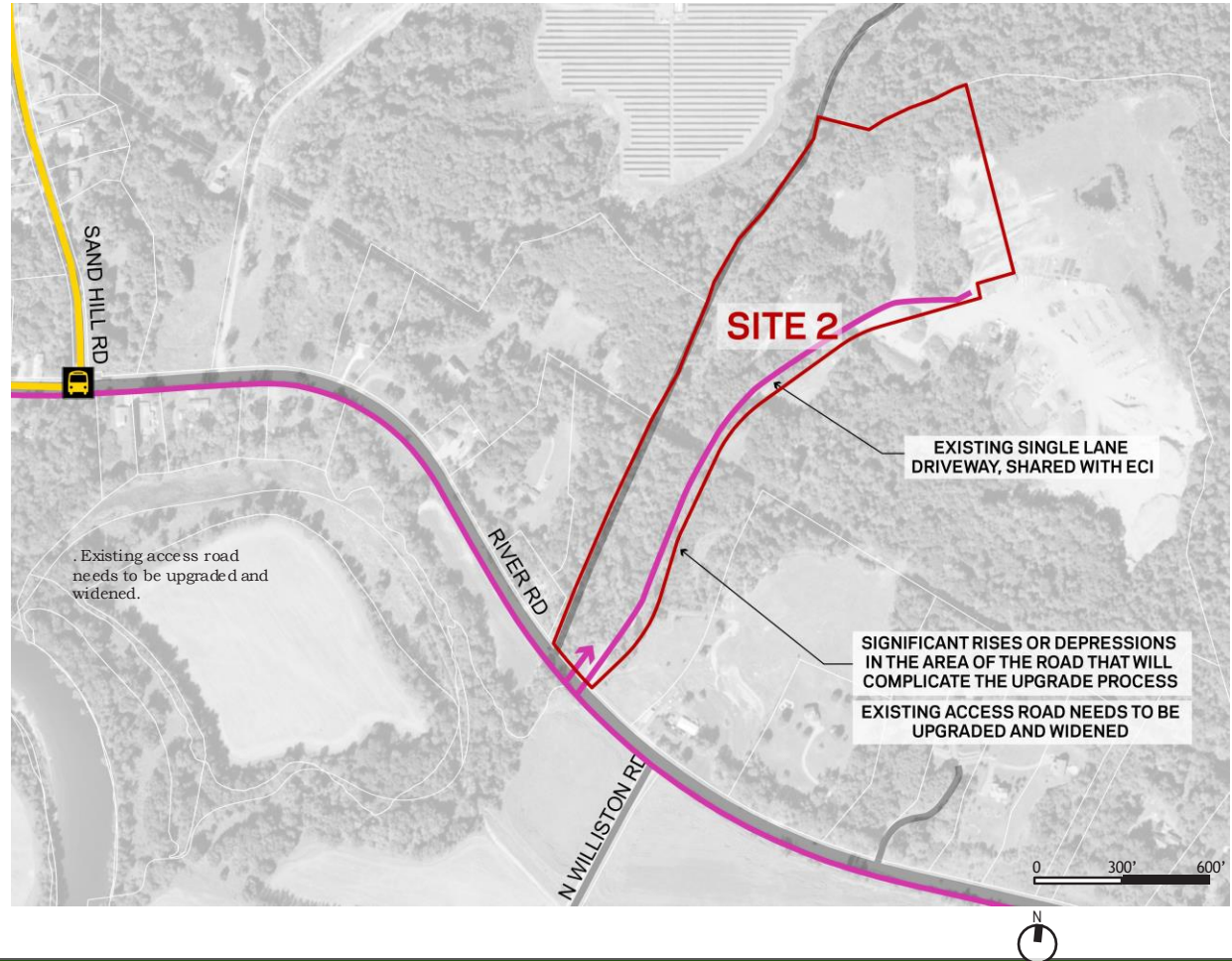
-  VEHICULAR ACCESS
-  PUBLIC TRANSIT

Potential Essex Sites: Site 2





SITE 2

ACCESSIBILITY



LEGEND

-  VEHICULAR ACCESS
-  PUBLIC TRANSIT

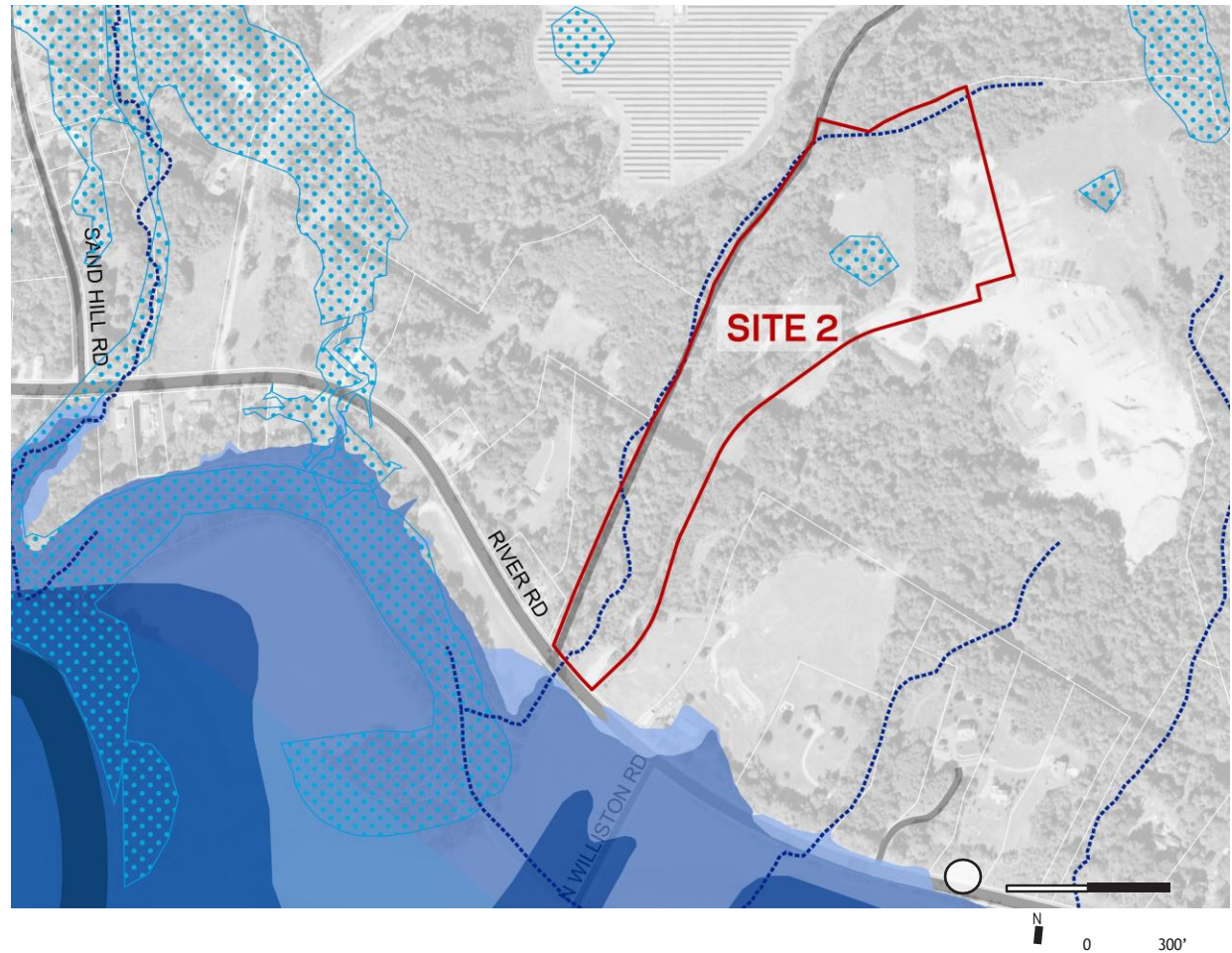
SITE 2

HYDROLOGICAL CONDITION



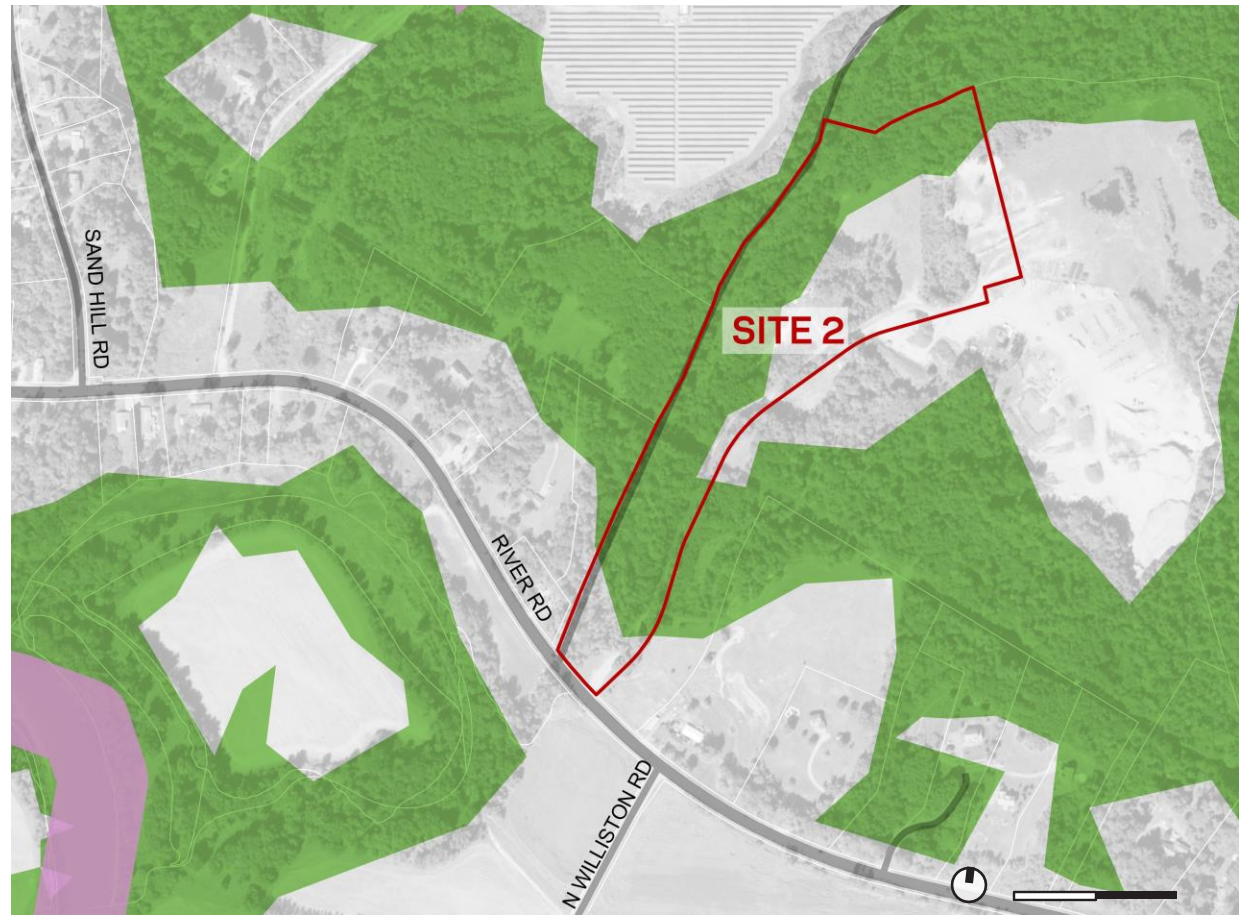
LEGEND

- 1% ANNUAL CHANCE FLOOD PLAIN
- 0.2% ANNUAL CHANCE FLOOD PLAIN
- WETLAND
- RIVER CORRIDORS
- STREAM





SITE 2

ENVIRONMENTAL IMPACT



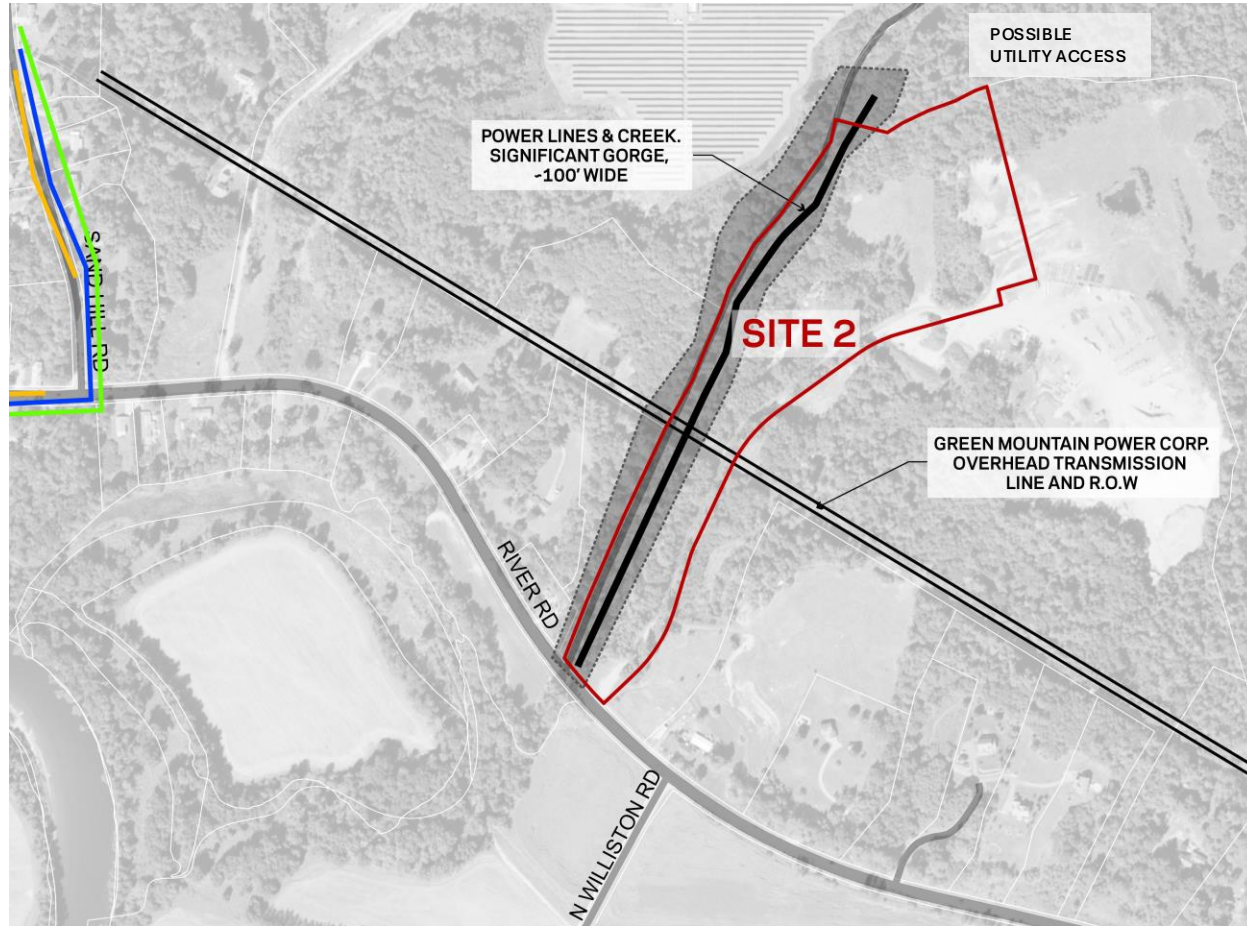
LEGEND

-  HABITAT BLOCKS & WILDLIFE CORRIDORS - HIGH VALUE
-  RARE, THREATENED & ENDANGERED SPECIES - ANIMAL





SITE 2

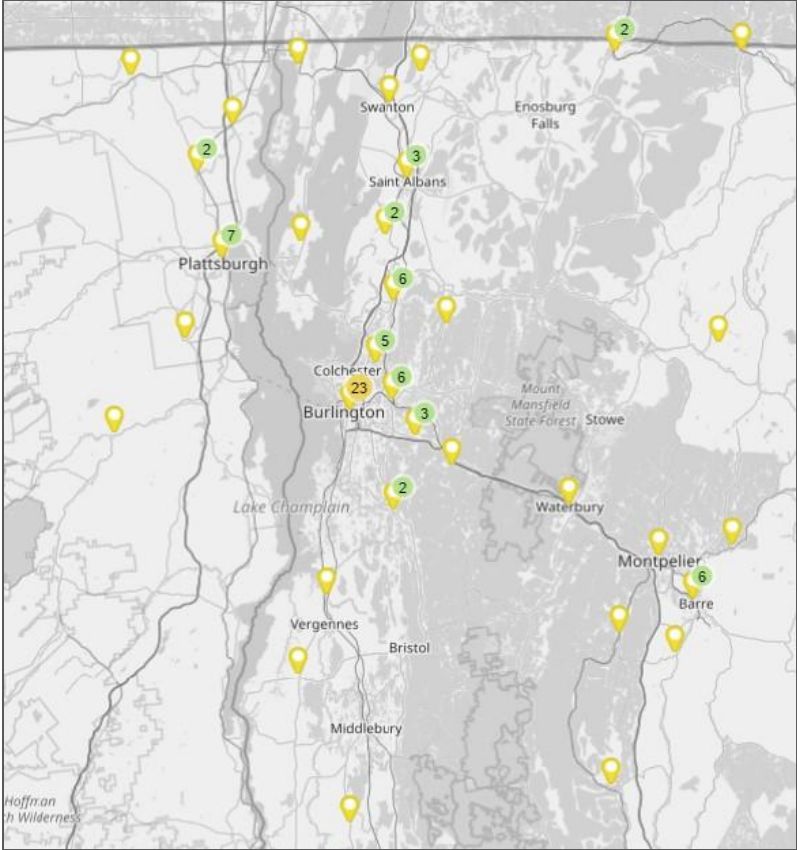
UTILITIES



LEGEND

-  GAS
-  WATER
-  SEWER
-  POWER

Current CRCF Employee Locations

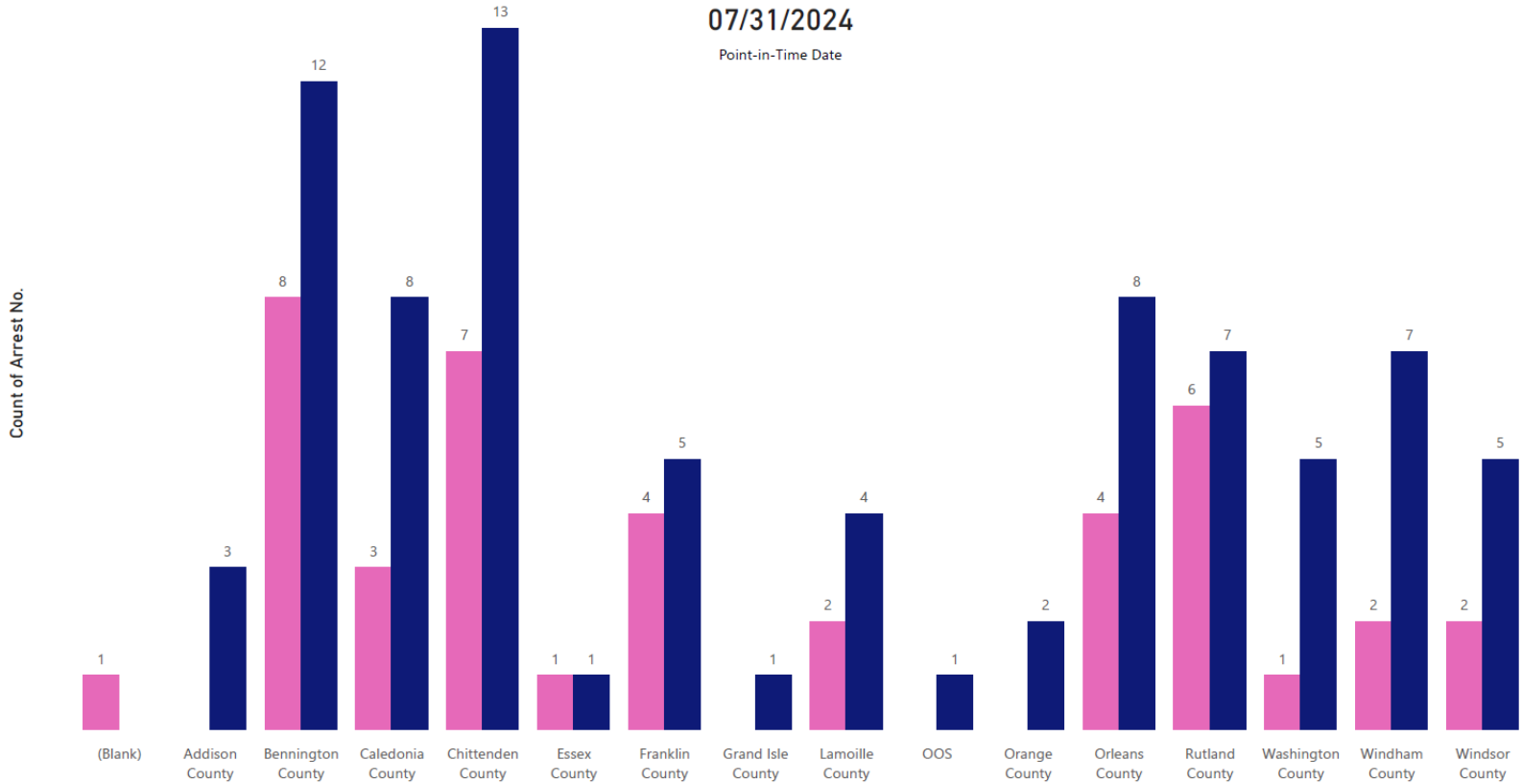


CRCF Point-in-Time Charges by County

Booking Status ● Detained ● Sentenced

07/31/2024

Point-in-Time Date



Conceptual Design

