

The July 7-17th 2023 Storm Response and Recovery

Presentation to the Vermont House Committee on Transportation

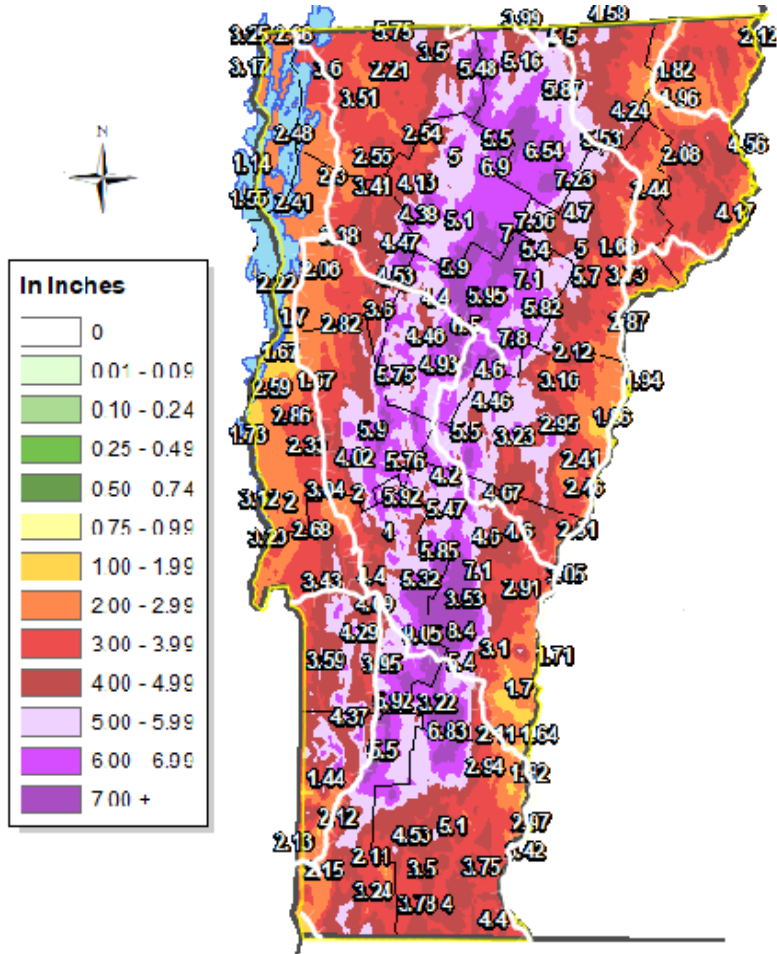
January 31, 2024

An aerial photograph of a railway track cutting through a dense, lush green forest. The track runs from the bottom center towards the middle of the frame, where it disappears into the distance. The surrounding trees are thick and vibrant green, with some hills visible in the far background under a slightly overcast sky. The overall tone is natural and serene.

Background

January 31, 2024

Background: Rainfall

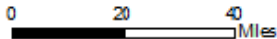


- Heavy rainfall occurred during July 10-11th.
- Rainfall amounts of 3 to 9 inches were observed across the state over 48 hours.
- The 5.28" rainfall at the airport in Berlin beat the previous record of 5.27" set with Tropical Storm Irene on 28 August 2011, setting a new record for rainfall in a single day.

Sources: NWS observers & spotters, media, public, state & local officials

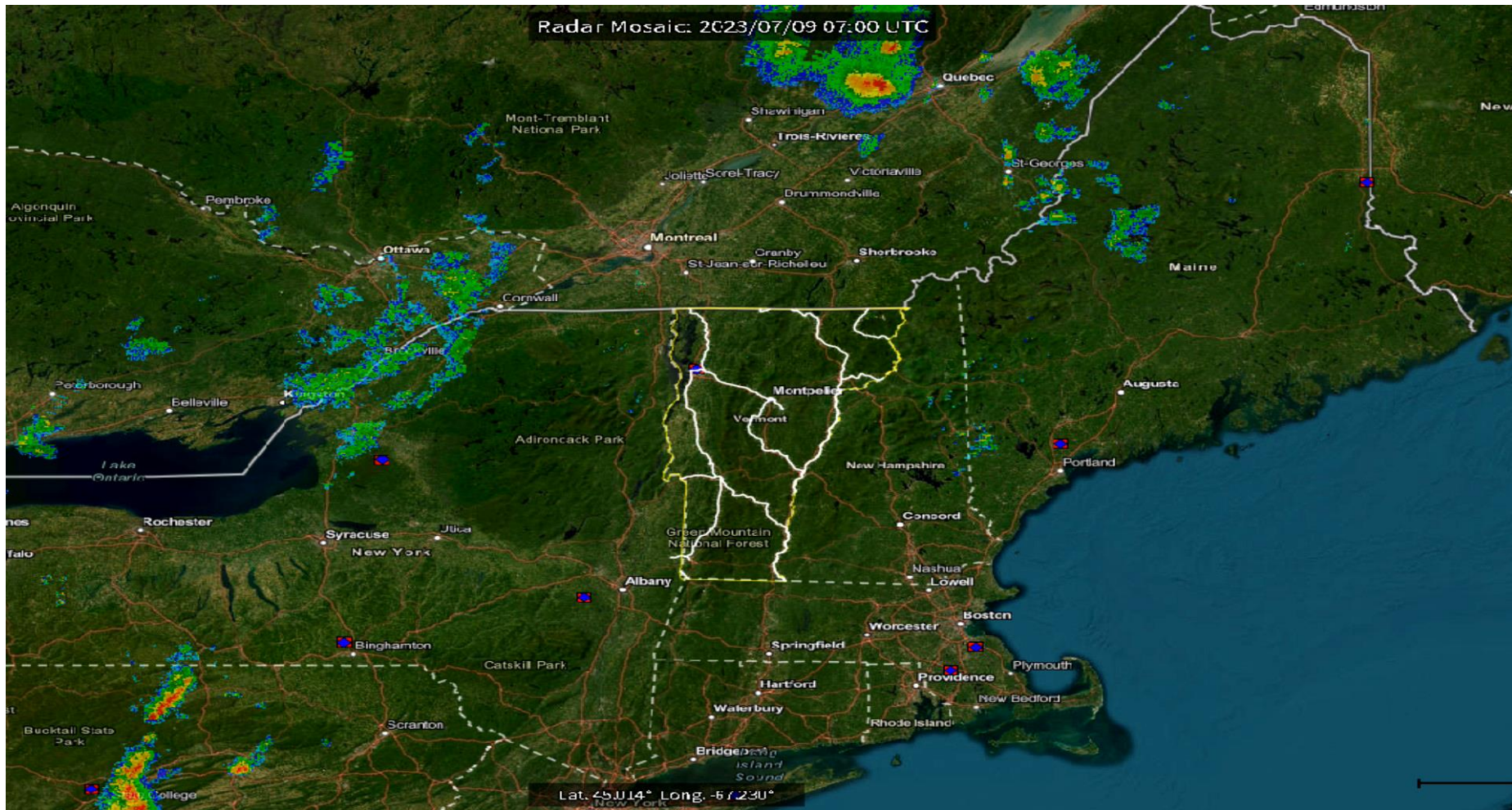
This map is an interpolation of actual reported values, but should be considered an estimation only

Created by the National Weather Service Forecast Office Burlington, Vermont

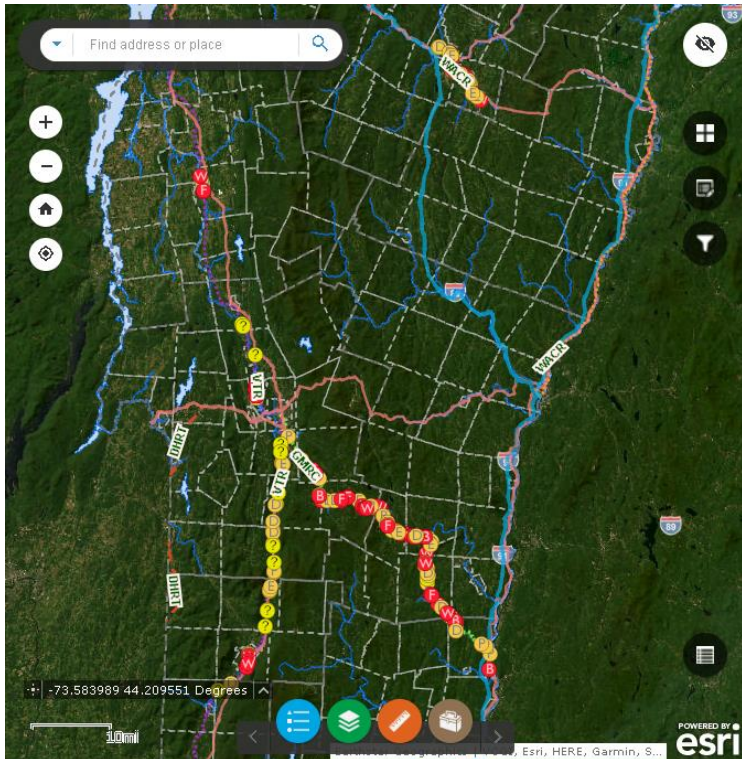


Source: National Weather Service (NWS) [weather.gov](https://www.weather.gov)
White lines are Rail Lines overlay

Background: Radar, July 9-10th

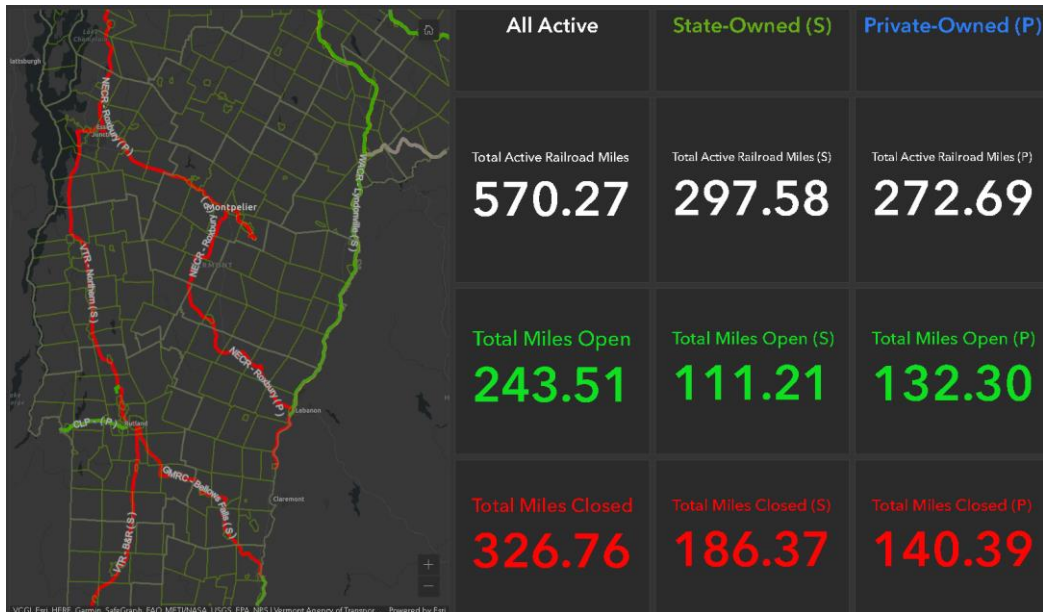


Background: Damage Apps



- Statewide State-owned Rail Lines had damage at 225 sites. There were 65 sites with debris-only damage. There were 160 sites that had individual damage solicitations given to contractors. Of those 160 sites, 105 sites are completed and 55 sites are ongoing.
- Rail Damage Occurred in 23 VT Towns
- Damage spanned 123 miles out of the 298 miles of state-owned Rail Lines, or 41%.
- 25 Bridges and 32 Culverts were affected. 6 Culverts required replacement.

Background: Damage Apps



Open / Closed Status Dashboard

- Using GPS data inherit in collection methods, GPS Coordinates, Town, Rail Line and Milepost are derived automatically
- GIS Dashboards were used to communicate Open / Closed Status of the Rail Lines to Vermont Emergency Management and Incident Command

Background: Amtrak Service

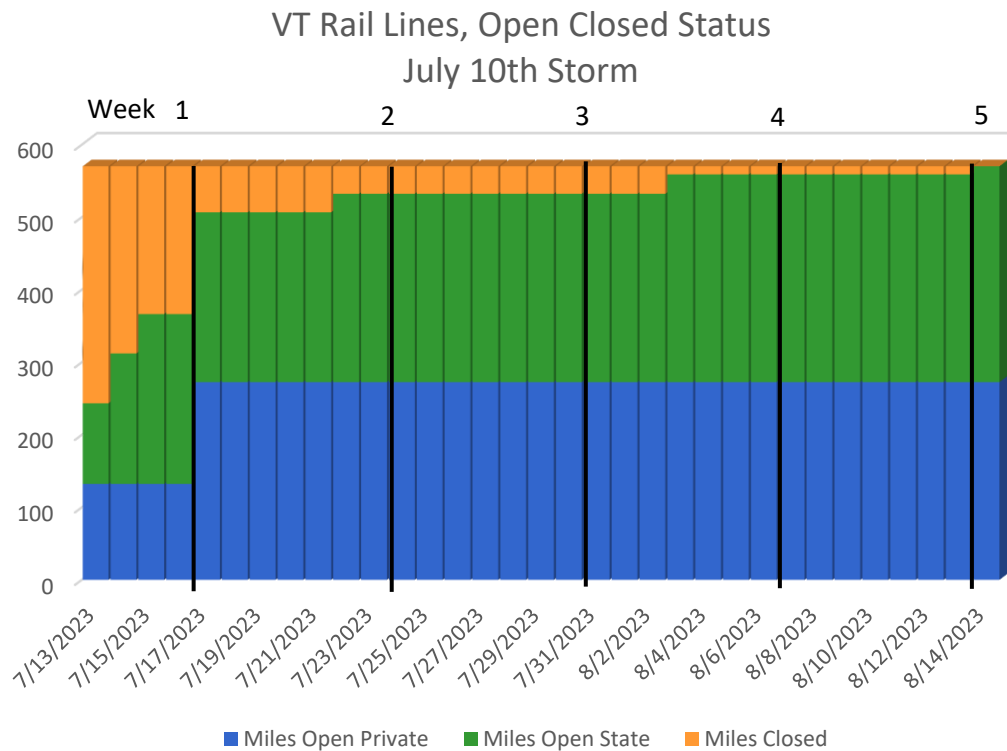


Photo by Vermont Rail System (VRS) 7/15/23

Amtrak Service was restored within 10 days

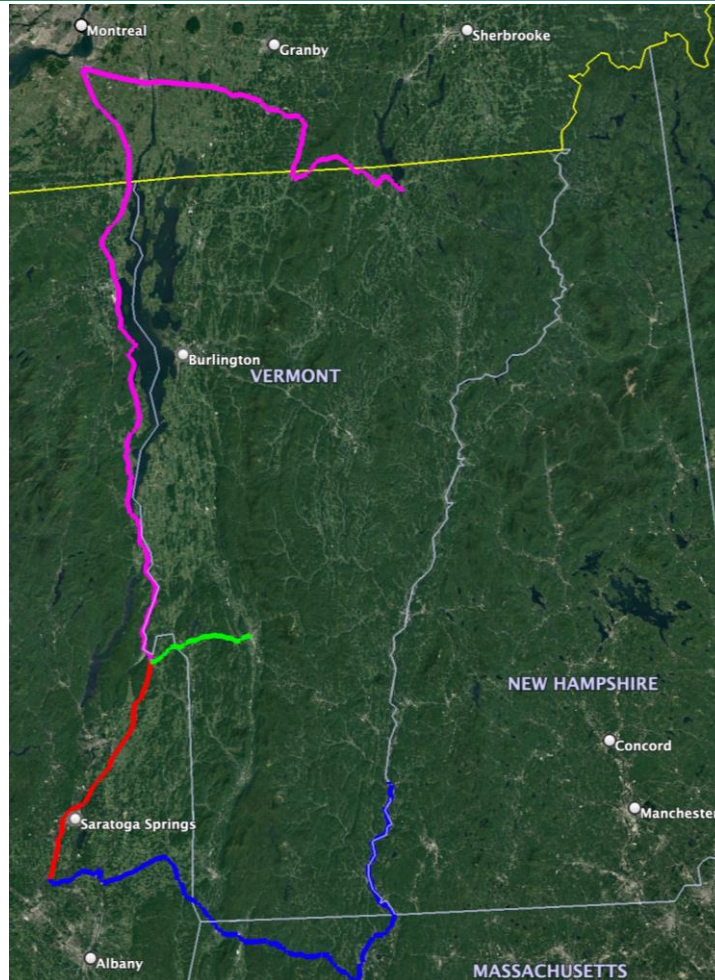
- Ethan Allen restored on July 15th
- Vermonter restored on July 19th

Background: Timeline



- After the storm, 58% of all VT Rail Lines were closed.
- In less than a week, only 11% of all VT Rail Lines were still closed.
- It took a total of 5 weeks to reopen all of VT Rail Lines.

Keeping Vermont Businesses Supplied



Vermont Rail Systems (VRS)
Freight Detour



Initial Damage

January 31, 2024

July 10th, 2023 Storm

Initial Damage on Vermont Railway Bennington & Rutland Subdivision

January 31, 2024

Rail Line: Vermont Railway (VTR) – Benn. & Rutland Subdivision

Town: Sunderland

Initial Damage – July 10th – 13th

MP 0

MP 16.2

MP 54.22

NORTH →

10

20

30

40

50

Bennington

Rutland



Rail Line: Vermont Railway (VTR) – Benn. & Rutland Subdivision

Town: Manchester

Initial Damage – July 10th – 13th

MP 0

MP 18.9

MP 54.22

NORTH

10

20

30

40

50

Bennington

Rutland

Rail Bridge #65



Rail Line: Vermont Railway (VTR) – Benn. & Rutland Subdivision

Town: Manchester

Initial Damage – July 10th – 13th

MP 0

MP 54.22

NORTH

10

20

30

40

50

Bennington

Rutland

MP 21.4



Rail Line: Vermont Railway (VTR) – Benn. & Rutland Subdivision

Town: Manchester

Initial Damage – July 10th – 13th

MP 0

MP 22.4

MP 54.22

NORTH →

10

20

30

40

50

Bennington

Rutland

13' long, 3' x 5'
Concrete Culvert



Rail Line: Vermont Railway (VTR) – Benn. & Rutland Subdivision

Town: Dorset

Initial Damage – July 10th – 13th

MP 0

MP 29.0

MP 54.22

NORTH

10

20

30

40

50

Bennington

Rutland



The July 7-17th, 2023 Storm - Response and Recovery

Rail Line: Vermont Railway (VTR) – Benn. & Rutland Subdivision

Town: Dorset

Initial Damage – July 10th – 13th

MP 0

MP 31.75

MP 54.22

NORTH

10

20

30

40

50

Bennington

Rutland

Rail Bridge #80



Rail Line: Vermont Railway (VTR) – Benn. & Rutland Subdivision

Town: Mount Tabor

Initial Damage – July 10th – 13th



Bennington

Rutland



The July 7-17th, 2023 Storm - Response and Recovery

Rail Line: Vermont Railway (VTR) – Benn. & Rutland Subdivision

Town: Danby

Initial Damage – July 10th – 13th

MP 0

MP 54.22

NORTH

10

20

30

40

50

Bennington

Rutland

MP 37.7



Rail Bridge #85



Rail Line: Vermont Railway (VTR) – Benn. & Rutland Subdivision

Town: Wallingford

Initial Damage – July 10th – 13th

MP 0

NORTH →

10

20

30

MP 40.6



40

50

MP 54.22

Bennington

Rutland

Rail Bridge #87



Rail Line: Vermont Railway (VTR) – Benn. & Rutland Subdivision

Town: Wallingford

Initial Damage – July 10th – 13th

MP 0

NORTH →

10

20

30

40

50

MP 42.67



MP 54.22

Bennington

Rutland

Rail Bridge #89



Rail Line: Vermont Railway (VTR) – Benn. & Rutland Subdivision

Town: Clarendon

Initial Damage – July 10th – 13th

MP 48.9



MP 54.22

MP 0

NORTH



10

20

30

40

50

Bennington

Rutland

Rail Bridge #94



Rail Line: Vermont Railway (VTR) – Benn. & Rutland Subdivision

Town: Clarendon

Initial Damage – July 10th – 13th

MP 0

MP 49.7

MP 54.22

NORTH →

10

20

30

40

50

Bennington

Rutland



Rail Line: Vermont Railway (VTR) – Benn. & Rutland Subdivision

Town: Clarendon

Initial Damage – July 10th – 13th

MP 0

MP 50.15

MP 54.22

NORTH

10

20

30

40

50

Bennington

Rutland



July 10th, 2023 Storm

Initial Damage on Vermont Railway Northern Subdivision

January 31, 2024

Rail Line: Vermont Railway (VTR) – Northern Subdivision

Initial Damage – July 10th – 13th

Town: Proctor

MP 58.65

MP 54.22



MP 123



Rutland



Burlington

Rail Line: Vermont Railway (VTR) – Northern Subdivision

Town: Proctor

MP 58.66

Initial Damage – July 10th – 13th

MP 54.22



MP 123



Rutland



Burlington

Rail Line: Vermont Railway (VTR) – Northern Subdivision

Town: Proctor

Initial Damage – July 10th – 13th

MP 59.53

MP 54.22



MP 123



Rutland



Burlington

Rail Line: Vermont Railway (VTR) – Northern Subdivision

Town: Proctor

MP 59.58

Initial Damage – July 10th – 13th

MP 54.22



60 NORTH → 70

80

90

100

110

120

MP 123

Rutland



Burlington

Rail Line: Vermont Railway (VTR) – Northern Subdivision

Town: Proctor

MP 60.11

Initial Damage – July 10th – 13th

MP 54.22

MP 123



Rutland



Burlington

Rail Line: Vermont Railway (VTR) – Northern Subdivision

Town: Proctor

MP 60.17

Initial Damage – July 10th – 13th

MP 54.22

MP 123

60 NORTH 70 80 90 100 110 120

Rutland

Burlington



Rail Line: Vermont Railway (VTR) – Northern Subdivision

Town: Proctor

MP 60.19

Initial Damage – July 10th – 13th

MP 54.22

MP 123



Rutland

Burlington



Rail Line: Vermont Railway (VTR) – Northern Subdivision

Town: Brandon

Initial Damage – July 10th – 13th

MP 68.10



MP 54.22

MP 123

60 NORTH 70 80 90 100 110 120

Rutland

Burlington



Rail Line: Vermont Railway (VTR) – Northern Subdivision

Town: Brandon

Initial Damage – July 10th – 13th

MP 68.30



MP 54.22

MP 123



Rutland

Burlington



July 10th, 2023 Storm

Initial Damage on Green Mountain Railroad Bellows Falls Subdivision

January 31, 2024

Rail Line: Green Mountain Railroad (GMRC)

Initial Damage – July 10th – 13th

Town: Rockingham

Bellows Falls

MP 8.60

Rutland

MP 0

MP 52.2

NORTH



10

20

30

40



Rail Bridge #112

Rail Line: Green Mountain Railroad (GMRC)

Initial Damage – July 10th – 13th

Town: Rockingham

Bellows Falls MP 0 MP 8.66

Rutland MP 52.2



Rail Line: Green Mountain Railroad (GMRC)

Town: Chester

Bellows Falls

MP 0

MP 12.80



Initial Damage – July 10th – 13th

Rutland

MP 52.2

NORTH



10

20

30

40



Rail Bridge #119

Rail Line: Green Mountain Railroad (GMRC)

Town: Chester

Bellows Falls

MP 0

Initial Damage – July 10th – 13th

Rutland

MP 52.2

MP 16.90



NORTH



10

20

30

40



Rail Line: Green Mountain Railroad (GMRC)

Town: Chester

Bellows Falls

MP 0

Initial Damage – July 10th – 13th

Rutland
MP 52.2

MP 18.28



Rail Line: Green Mountain Railroad (GMRC)

Town: Chester

Bellows Falls

MP 0

MP 18.60



Initial Damage – July 10th – 13th

Rutland

MP 52.2

NORTH



10

20

30

40



Rail Line: Green Mountain Railroad (GMRC)

Initial Damage – July 10th – 13th

Town: Cavendish

Bellows Falls

MP 0

Rutland

MP 52.2

MP 21.09



Rail Line: Green Mountain Railroad (GMRC)

Town: Cavendish

Bellows Falls

MP 0

Initial Damage – July 10th – 13th

Rutland

MP 52.2

MP 21.20



NORTH



10

20

30

40



Rail Line: Green Mountain Railroad (GMRC)

Town: Cavendish

Bellows Falls

MP 0

Initial Damage – July 10th – 13th

Rutland

MP 52.2

MP 21.38



NORTH



10

20

30

40



Rail Line: Green Mountain Railroad (GMRC)

Town: Cavendish

Bellows Falls

MP 0

Initial Damage – July 10th – 13th

Rutland

MP 52.2

MP 22.64



Rail Line: Green Mountain Railroad (GMRC)

Town: Cavendish

Bellows Falls

MP 0

Initial Damage – July 10th – 13th

Rutland

MP 52.2

MP 23.51



NORTH



10

20

30

40



Rail Line: Green Mountain Railroad (GMRC)

Town: Cavendish

Bellows Falls

MP 0

Initial Damage – July 10th – 13th

Rutland

MP 52.2

MP 23.54



NORTH →

10

20

30

40



Rail Line: Green Mountain Railroad (GMRC)

Town: Cavendish

Bellows Falls

MP 0

Initial Damage – July 10th – 13th

Rutland

MP 52.2

MP 23.55



Rail Line: Green Mountain Railroad (GMRC)

Town: Cavendish

Bellows Falls

MP 0

Initial Damage – July 10th – 13th

Rutland

MP 52.2

MP 23.60



NORTH



10

20

30

40



Rail Line: Green Mountain Railroad (GMRC)

Town: Cavendish

Bellows Falls

MP 0

Initial Damage – July 10th – 13th

Rutland

MP 52.2

MP 23.75



NORTH



10

20

30

40



Rail Line: Green Mountain Railroad (GMRC)

Town: Cavendish

Bellows Falls

MP 0

MP 23.80



Initial Damage – July 10th – 13th

Rutland

MP 52.2

NORTH



10

20

30

40



Rail Line: Green Mountain Railroad (GMRC)

Town: Cavendish

Bellows Falls

MP 0

Initial Damage – July 10th – 13th

Rutland

MP 52.2

MP 24.05



NORTH



10

20

30

40



Rail Line: Green Mountain Railroad (GMRC)

Town: Cavendish

Bellows Falls

MP 0

Initial Damage – July 10th – 13th

Rutland

MP 52.2

MP 24.35



NORTH



10

20

30

40



Rail Line: Green Mountain Railroad (GMRC)

Initial Damage – July 10th – 13th

Town: Cavendish

Bellows Falls

MP 0

MP 24.37

Rutland

MP 52.2



Rail Line: Green Mountain Railroad (GMRC)

Town: Ludlow

Bellows Falls

MP 0

Initial Damage – July 10th – 13th

MP 28.45



Rutland

MP 52.2



Rail Line: Green Mountain Railroad (GMRC)

Initial Damage – July 10th – 13th

Town: Ludlow

Bellows Falls

MP 0

Rutland

MP 52.2

MP 28.55



NORTH →

10

20

30

40



Rail Line: Green Mountain Railroad (GMRC)

Town: Ludlow

Bellows Falls

MP 0

Initial Damage – July 10th – 13th

Rutland

MP 52.2

MP 30.70



NORTH



10

20

30

40



Rail Line: Green Mountain Railroad (GMRC)

Town: Ludlow

Bellows Falls

MP 0

Initial Damage – July 10th – 13th

MP 30.81

Rutland

MP 52.2



Rail Line: Green Mountain Railroad (GMRC)

Town: Mount Holly

Bellows Falls

MP 0

Initial Damage – July 10th – 13th

MP 31.68

Rutland

MP 52.2



Rail Line: Green Mountain Railroad (GMRC)

Town: Mount Holly

Bellows Falls

MP 0

Initial Damage – July 10th – 13th

MP 32.42



Rutland

MP 52.2



Rail Line: Green Mountain Railroad (GMRC)

Town: Mount Holly

Bellows Falls

MP 0

Initial Damage – July 10th – 13th

MP 32.72

Rutland

MP 52.2

NORTH



10

20

30



40



Rail Line: Green Mountain Railroad (GMRC)

Town: Mount Holly

Bellows Falls

MP 0

Initial Damage – July 10th – 13th

Rutland

MP 52.2



Rail Line: Green Mountain Railroad (GMRC)

Town: Mount Holly

Bellows Falls

MP 0

Initial Damage – July 10th – 13th

MP 32.85



Rutland

MP 52.2

NORTH →

10

20

30

40



Rail Line: Green Mountain Railroad (GMRC)

Town: Mount Holly

Bellows Falls

MP 0

Initial Damage – July 10th – 13th

MP 33.28



Rutland

MP 52.2

NORTH



10

20

30

40



Rail Line: Green Mountain Railroad (GMRC)

Town: Mount Holly

Bellows Falls

MP 0

Initial Damage – July 10th – 13th

MP 35.67



Rutland

MP 52.2

NORTH



10

20

30

40



Rail Line: Green Mountain Railroad (GMRC)

Town: Mount Holly

Bellows Falls

MP 0

Initial Damage – July 10th – 13th

MP 35.87

Rutland

MP 52.2

NORTH



10

20

30

40



Rail Line: Green Mountain Railroad (GMRC)

Town: Mount Holly

Bellows Falls

MP 0

Initial Damage – July 10th – 13th

MP 36.59



Rutland

MP 52.2

NORTH



10

20

30

40



Rail Line: Green Mountain Railroad (GMRC)

Town: Mount Holly

Bellows Falls

MP 0

Initial Damage – July 10th – 13th

MP 37.60



Rutland

MP 52.2

NORTH



10

20

30

40

Rail Bridge #142



Rail Line: Green Mountain Railroad (GMRC)

Town: Mount Holly

Bellows Falls

MP 0

Initial Damage – July 10th – 13th

MP 37.70



Rutland

MP 52.2



Rail Line: Green Mountain Railroad (GMRC)

Town: Wallingford

Bellows Falls

MP 0

Initial Damage – July 10th – 13th

MP 40.09

Rutland

MP 52.2

NORTH



10

20

30

40



Rail Line: Green Mountain Railroad (GMRC)

Town: Shrewsbury

Bellows Falls

MP 0

Initial Damage – July 10th – 13th

MP 45.58

Rutland

MP 52.2



| NORTH →

| 10

| 20

| 30

| 40

|



July 10th, 2023 Storm

Initial Damage on Washington County Railroad Montpelier & Barre Subdivision

January 31, 2024

Rail Line: Washington County Railroad (WACR) – Montpelier & Barre

Town: Berlin

Initial Damage – July 10th – 13th

MP 0

MP 3.45

MP 11.17

EAST →

2

4

6

8

10

Montpelier

Barre Town



Rail Line: Washington County Railroad (WACR) – Montpelier & Barre

Town: Berlin

Initial Damage – July 10th – 13th

MP 0

MP 5.04

MP 11.17

EAST →

2

4

6

8

10

Montpelier

Barre Town



Rail Line: Washington County Railroad (WACR) – Montpelier & Barre
Town: Barre City

Initial Damage – July 10th – 13th

MP 0

MP 6.35

MP 11.17

EAST →

2

4

6

8

10

Montpelier

Barre Town



Rail Line: Washington County Railroad (WACR) – Montpelier & Barre

Town: Barre City

Initial Damage – July 10th – 13th

MP 0

MP 6.8

MP 11.17

EAST →

2

4

6

8

10

Montpelier

Barre Town



Rail Line: Washington County Railroad (WACR) – Montpelier & Barre
Town: Barre City

Initial Damage – July 10th – 13th

MP 0

MP 6.9

MP 11.17

EAST →

2

4

6

8

10

Montpelier

Barre Town



Rail Line: Washington County Railroad (WACR) – Montpelier & Barre

Town: Barre City

Initial Damage – July 10th – 13th

MP 0

MP 6.9

MP 11.17

EAST →

2

4

6

8

10

Montpelier

Barre Town



Rail Line: Washington County Railroad (WACR) – Montpelier & Barre
Town: Barre City

Initial Damage – July 10th – 13th

MP 0

MP 7.1

MP 11.17

EAST →

2

4

6

8

10

Montpelier

Barre Town



Rail Line: Washington County Railroad (WACR) – Montpelier & Barre

Town: Barre City

Initial Damage – July 10th – 13th

MP 0

EAST



2

4

6

8

10

MP 11.17

Montpelier

Barre Town

MP 8.0



Rail Line: Washington County Railroad (WACR) – Montpelier & Barre

Town: Barre Town

Initial Damage – July 10th – 13th

MP 0

EAST



2

4

6

8

10

MP 9.31



MP 11.17

Montpelier



Barre Town



Before and After Images

January 31, 2024

July 10th, 2023 Storm

Before and After on Green Mountain Railroad Bellows Falls Subdivision

January 31, 2024

Rail Line: Green Mountain Railroad (GMRC)

Town: Rockingham

MP 8.6

MP 0

NORTH



10

20

30

40

MP 52.2

Recovery

Bellows Falls



Initial Damage

Rutland



After Recovery

Rail Line: Green Mountain Railroad (GMRC)

Town: Rockingham

Recovery

MP 0

MP 11.6

MP 52.2

NORTH

10

20

30

40

Bellows Falls

Rutland



Initial Damage



After Recovery

Rail Line: Green Mountain Railroad (GMRC)

Town: Rockingham

Recovery



Bellows Falls

Rutland



Initial Damage

After Recovery

Rail Line: Green Mountain Railroad (GMRC)

Town: Rockingham

Recovery



Bellows Falls



Initial Damage

Rutland



After Recovery

Rail Line: Green Mountain Railroad (GMRC)

Town: Cavendish

Recovery

MP 0

MP 21.10

MP 52.2

NORTH



10

20

30

40

Bellows Falls



Initial Damage

Rutland



After Recovery

Rail Line: Green Mountain Railroad (GMRC)

Town: Cavendish

Recovery

MP 0

MP 52.2

NORTH



10

20

MP 24.30



30

40

Bellows Falls

Rutland



Initial Damage

After Recovery

Rail Line: Green Mountain Railroad (GMRC)

Town: Cavendish

Recovery

MP 0

MP 28.50

MP 52.2

NORTH →

10

20

30

40

Bellows Falls

Rutland



Initial Damage



After Recovery

July 10th, 2023 Storm

Before and After on Washington County Railroad Montpelier & Barre Subdivision

January 31, 2024

Rail Line: Washington County Railroad (WACR) – Montpelier & Barre

Town: Berlin

Recovery

MP 0

MP 3.4

MP 11.17

EAST →

2

4

6

8

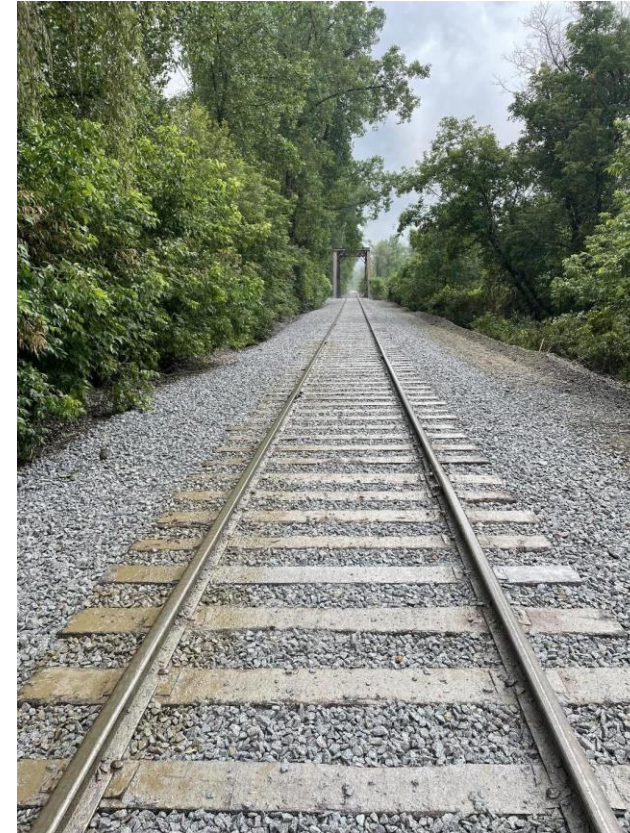
10

Montpelier

Barre Town



Initial Damage



After Recovery

Rail Line: Washington County Railroad (WACR) – Montpelier & Barre

Town: Barre City

Recovery

MP 0

MP 6.8

MP 11.17

EAST →

2

4

6

8

10

Montpelier

Barre Town



Initial Damage

After Recovery

Rail Line: Washington County Railroad (WACR) – Montpelier & Barre

Town: Barre City

Recovery

MP 0

MP 6.92

MP 11.17

EAST →

2

4

6

8

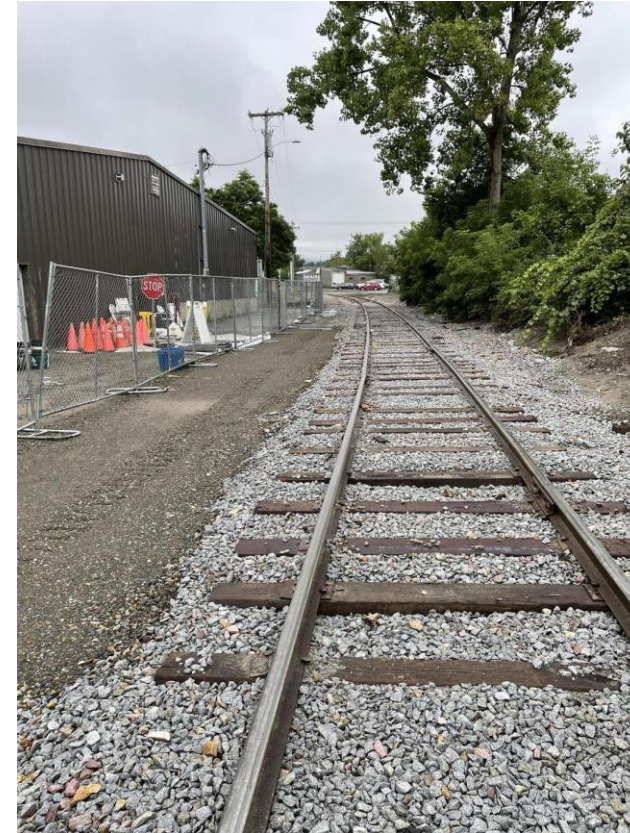
10

Montpelier

Barre Town



Initial Damage



After Recovery

Rail Line: Washington County Railroad (WACR) – Montpelier & Barre

Town: Barre City

Recovery

MP 0

EAST



2

4

6

MP 7.55



8

10

MP 11.17

Montpelier



Initial Damage

Barre Town



After Recovery

Rail Line: Washington County Railroad (WACR) – Montpelier & Barre

Town: Barre Town

Recovery

MP 0

EAST



2

4

6

8

10

MP 9.30



MP 11.17

Montpelier



Initial Damage

Barre Town



After Recovery

Rail Line: Washington County Railroad (WACR) – Montpelier & Barre

Town: Barre Town

Recovery

MP 11.3

MP 11.3

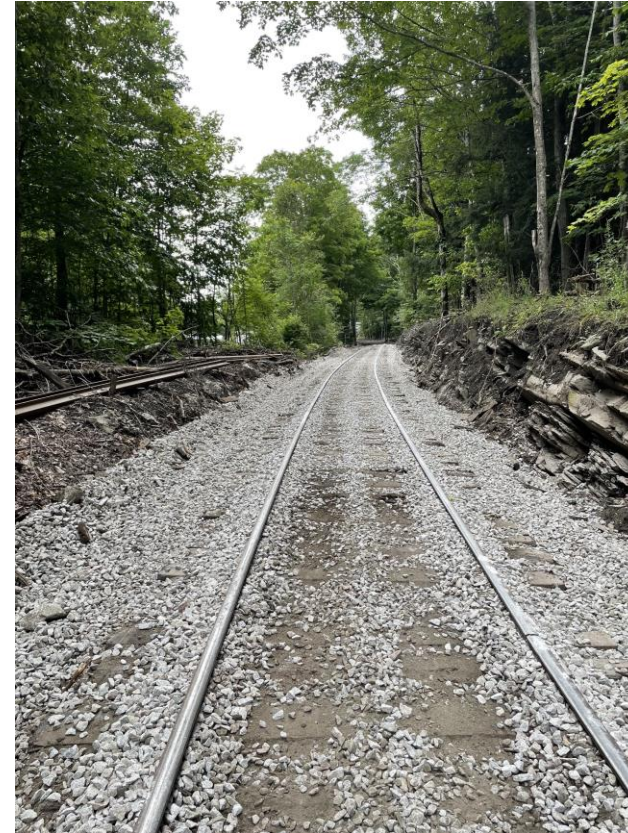
MP 0



Montpelier



Initial Damage



After Recovery

Barre Town



Large Project Sites

January 31, 2024

July 10th, 2023 Storm

Project Site in Chester, Bridge 119 at MP 12.8 on Green Mountain Railroad Bellows Falls Subdivision

January 31, 2024

Rail Line: Green Mountain Railroad (GMRC)

Recovery

Town: Chester
July 18th

MP: 12.80 BR119

July 10th



Sept. 21st

WEEK

1

2

3

4

5

6

7

8

9

10

Storm Event

Present



Rail Line: Green Mountain Railroad (GMRC)

Town: Chester
July 19th

MP: 12.80 BR119

Recovery

July 10th

Sept. 21st

WEEK

1

2

3

4

5

6

7

8

9

10

Storm Event

Present



Rail Line: Green Mountain Railroad (GMRC)

Town: Chester

July 20th

MP: 12.80 BR119

Recovery

July 10th



Sept. 21st

WEEK

1

2

3

4

5

6

7

8

9

10

Storm Event

Present



The July 7-17th, 2023 Storm - Response and Recovery

Rail Line: Green Mountain Railroad (GMRC)

Town: Chester

July 20th

MP: 12.80 BR119

Recovery

July 10th



Sept. 21st

WEEK

1

2

3

4

5

6

7

8

9

10

Storm Event

Present



The July 7-17th, 2023 Storm - Response and Recovery

Rail Line: Green Mountain Railroad (GMRC)

Town: Chester

MP: 12.80 BR119

Recovery

July 10th

July 21st



WEEK

1

2

3

4

5

6

7

8

9

10

Sept. 21st

Storm Event

Present



Rail Line: Green Mountain Railroad (GMRC)

Town: Chester

MP: 12.80 BR119

Recovery

July 10th

July 21st



WEEK

1

2

3

4

5

6

7

8

9

10

Sept. 21st

Storm Event

Present



Rail Line: Green Mountain Railroad (GMRC)

Town: Chester

MP: 12.80 BR119

Recovery

July 10th

July 24th

Sept. 21st

WEEK

1

2

3

4

5

6

7

8

9

10

Storm Event

Present



July 10th, 2023 Storm

Project Site in Chester, Bridge 123 at MP 17.82
on
Green Mountain Railroad
Bellows Falls Subdivision

January 31, 2024

Rail Line: Green Mountain Railroad (GMRC)

Town: Chester

MP: 17.82 BR123

Recovery

July 10th

July 26th



Sept. 21st

WEEK

1

2

3

4

5

6

7

8

9

10

Storm Event

Present



Rail Line: Green Mountain Railroad (GMRC)

Town: Chester

MP: 17.82 BR123

Recovery

July 10th

July 27th

Sept. 21st

WEEK

1

2

3

4

5

6

7

8

9

10

Storm Event

Present



Rail Line: Green Mountain Railroad (GMRC)

Town: Chester

MP: 17.82 BR123

Recovery

July 10th

July 28th



Sept. 21st

WEEK

1

2

3

4

5

6

7

8

9

10

Storm Event

Present



Rail Line: Green Mountain Railroad (GMRC)

Town: Chester

MP: 17.82 BR123

Recovery

July 10th

July 29th

Sept. 21st

WEEK

1

2



3

4

5

6

7

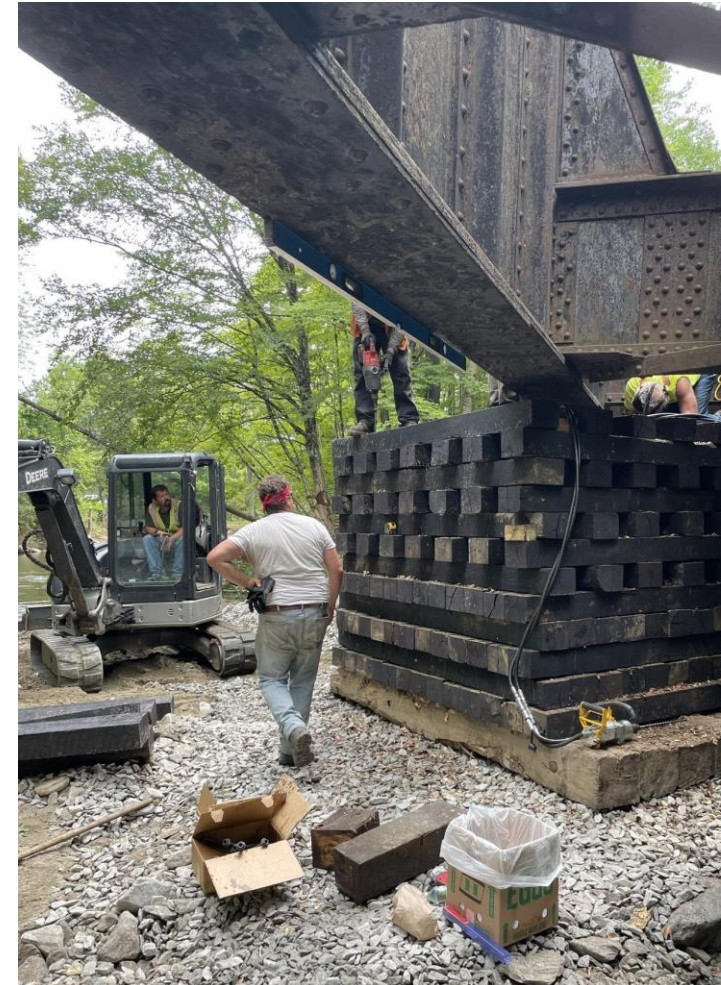
8

9

10

Storm Event

Present



Rail Line: Green Mountain Railroad (GMRC)

Town: Chester

MP: 17.82 BR123

Recovery

July 10th

July 31st

Sept. 21st

WEEK

1

2

3

4

5

6

7

8

9

10

Storm Event

Present



Rail Line: Green Mountain Railroad (GMRC)

Town: Chester

MP: 17.82 BR123

Recovery

July 10th

August 1st

Sept. 21st

WEEK

1

2

3

4

5

6

7

8

9

10

Storm Event

Present



Rail Line: Green Mountain Railroad (GMRC)

Town: Chester

MP: 17.82 BR123
August 3rd

Recovery

July 10th

Sept. 21st

WEEK

1

2

3

4

5

6

7

8

9

10

Storm Event

Present



Rail Line: Green Mountain Railroad (GMRC)

Town: Chester

MP: 17.82 BR123
August 4th

Recovery

July 10th

Sept. 21st

WEEK

1

2

3

4

5

6

7

8

9

10

Storm Event

Present



July 10th, 2023 Storm

**Project Site in Ludlow at MP 28.07
on
Green Mountain Railroad
Bellows Falls Subdivision**

January 31, 2024

Rail Line: Green Mountain Railroad (GMRC)

Recovery

Town: Ludlow

MP: 28.07

July 10th - 13th

July 10th ▾

WEEK

1

2

3

4

5

6

7

8

9

10

Sept. 21st

Storm Event

Present



Rail Line: Green Mountain Railroad (GMRC)

Recovery

Town: Ludlow

MP: 28.07

July 10th - 13th

July 10th ▾

Sept. 21st

WEEK

1

2

3

4

5

6

7

8

9

10

Storm Event

Present



Rail Line: Green Mountain Railroad (GMRC)

Recovery

Town: Ludlow

MP: 28.07

July 10th - 13th

July 10th ▾

Sept. 21st

WEEK

1

2

3

4

5

6

7

8

9

10

Storm Event

Present



7/11/23

Rail Line: Green Mountain Railroad (GMRC)

Recovery

Town: Ludlow

MP: 28.07

July 10th - 13th

July 10th ▾

Sept. 21st

WEEK

1

2

3

4

5

6

7

8

9

10

Storm Event

Present



7/11/23

Rail Line: Green Mountain Railroad (GMRC)

Town: Ludlow

MP: 28.07

July 10th - 13th

July 10th ▽

WEEK

1

2

3

4

5

6

7

8

9

10

Storm Event

Recovery

Sept. 21st

Present



7/11/23

Rail Line: Green Mountain Railroad (GMRC)

Town: Ludlow

MP: 28.07

Recovery

July 15th

July 10th



WEEK

1

2

3

4

5

6

7

8

9

10

Sept. 21st

Storm Event

Present



Rail Line: Green Mountain Railroad (GMRC)

Town: Ludlow

July 17th

MP: 28.07

Recovery

July 10th



WEEK

1

2

3

4

5

6

7

8

9

10

Sept. 21st

Storm Event

Present



Rail Line: Green Mountain Railroad (GMRC)

Town: Ludlow

July 19th

MP: 28.07

Recovery

July 10th



Sept. 21st

WEEK

1

2

3

4

5

6

7

8

9

10

Storm Event

Present





Rail Line: Green Mountain Railroad (GMRC)

Recovery

Town: Ludlow

MP: 28.07

July 19th

July 10th



Sept. 21st

WEEK

1

2

3

4

5

6

7

8

9

10

Storm Event

Present



Rail Line: Green Mountain Railroad (GMRC)

Town: Ludlow

MP: 28.07

Recovery

July 10th

July 20th



WEEK

1

2

3

4

5

6

7

8

9

10

Sept. 21st

Storm Event

Present



Rail Line: Green Mountain Railroad (GMRC)

Town: Ludlow

MP: 28.07

Recovery

July 10th

July 21st



WEEK

1

2

3

4

5

6

7

8

9

10

Sept. 21st

Storm Event

Present



Rail Line: Green Mountain Railroad (GMRC)

Town: Ludlow

MP: 28.07

Recovery

July 10th

July 25th



Sept. 21st

WEEK

1

2

3

4

5

6

7

8

9

10

Storm Event

Present



Rail Line: Green Mountain Railroad (GMRC)

Town: Ludlow

MP: 28.07

Recovery

July 10th

July 26th



Sept. 21st

WEEK

1

2

3

4

5

6

7

8

9

10

Storm Event

Present



Rail Line: Green Mountain Railroad (GMRC)

Town: Ludlow

MP: 28.07

Recovery

July 10th

July 26th



Sept. 21st

WEEK

1

2

3

4

5

6

7

8

9

10

Storm Event

Present



Rail Line: Green Mountain Railroad (GMRC)

Town: Ludlow

MP: 28.07

Recovery

July 10th

July 27th

Sept. 21st

WEEK

1

2

3

4

5

6

7

8

9

10

Storm Event

Present



Rail Line: Green Mountain Railroad (GMRC)

Town: Ludlow

MP: 28.07

Recovery

July 10th

July 27th

Sept. 21st

WEEK

1

2

3

4

5

6

7

8

9

10

Storm Event

Present



Rail Line: Green Mountain Railroad (GMRC)

Town: Ludlow

MP: 28.07

Recovery

July 10th

July 27th

Sept. 21st

WEEK

1

2

3

4

5

6

7

8

9

10

Storm Event

Present



Rail Line: Green Mountain Railroad (GMRC)

Town: Ludlow

MP: 28.07

Recovery

July 10th

July 31st

Sept. 21st

WEEK

1

2

3

4

5

6

7

8

9

10

Storm Event

Present



Rail Line: Green Mountain Railroad (GMRC)

Town: Ludlow

MP: 28.07

Aug. 3rd



July 10th

Sept. 21st

WEEK

1

2

3

4

5

6

7

8

9

10

Storm Event

Present



Rail Line: Green Mountain Railroad (GMRC)

Town: Ludlow

MP: 28.07

Aug. 4th

Recovery

July 10th

Sept. 21st

WEEK

1

2

3

4

5

6

7

8

9

10

Storm Event

Present



Rail Line: Green Mountain Railroad (GMRC)

Town: Ludlow

MP: 28.07

Aug. 4th

Recovery

July 10th

Sept. 21st

WEEK

1

2

3

4

5

6

7

8

9

10

Storm Event

Present



Rail Line: Green Mountain Railroad (GMRC)

Town: Ludlow

MP: 28.07

Aug. 7th



Recovery

July 10th

Sept. 21st

WEEK

1

2

3

4

5

6

7

8

9

10

Storm Event

Present



Rail Line: Green Mountain Railroad (GMRC)

Town: Ludlow

MP: 28.07

Aug. 7th



July 10th

Sept. 21st

WEEK

1

2

3

4

5

6

7

8

9

10

Storm Event

Present



Rail Line: Green Mountain Railroad (GMRC)

Town: Ludlow

MP: 28.07

Aug. 7th

Recovery

July 10th

Sept. 21st

WEEK

1

2

3

4

5

6

7

8

9

10

Storm Event

Present



Rail Line: Green Mountain Railroad (GMRC)

Town: Ludlow

MP: 28.07
Aug. 8th

Recovery

July 10th

Sept. 21st

WEEK

1

2

3

4

5

6

7

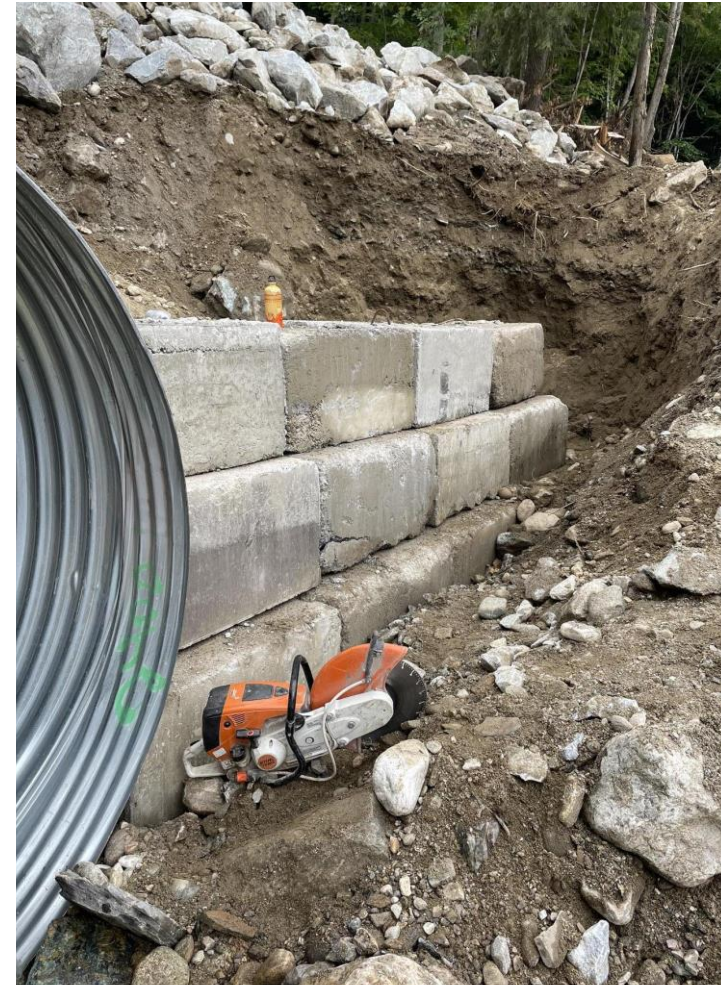
8

9

10

Storm Event

Present



Rail Line: Green Mountain Railroad (GMRC)

Town: Ludlow

MP: 28.07
Aug. 9th

Recovery

July 10th

Sept. 21st

WEEK

1

2

3

4

5

6

7

8

9

10

Storm Event

Present



Rail Line: Green Mountain Railroad (GMRC)

Town: Ludlow

MP: 28.07
Aug. 11th

Recovery

July 10th

Sept. 21st

WEEK

1

2

3

4

5

6

7

8

9

10

Storm Event

Present



Rail Line: Green Mountain Railroad (GMRC)

Town: Ludlow

MP: 28.07

Recovery

July 10th

Aug. 14th

Sept. 21st

WEEK

1

2

3

4

5

6

7

8

9

10

Storm Event

Present



Rail Line: Green Mountain Railroad (GMRC)

Town: Ludlow

MP: 28.07

Recovery

July 10th

Aug. 15th

Sept. 21st

WEEK

1

2

3

4

5

6

7

8

9

10

Storm Event

Present



Rail Line: Green Mountain Railroad (GMRC)

Town: Ludlow

MP: 28.07

Recovery

July 10th

Aug. 22nd

Sept. 21st

WEEK

1

2

3

4

5

6

7

8

9

10

Storm Event

Present



Rail Line: Green Mountain Railroad (GMRC)

Town: Ludlow

MP: 28.07

Recovery

July 10th

Aug. 22nd

Sept. 21st

WEEK

1

2

3

4

5

6

7

8

9

10

Storm Event

Present



Rail Line: Green Mountain Railroad (GMRC)

Town: Ludlow

MP: 28.07

Recovery

July 10th

Aug. 24th

Sept. 21st

WEEK

1

2

3

4

5

6

7

8

9

10

Storm Event

Present



Rail Line: Green Mountain Railroad (GMRC)

Town: Ludlow

MP: 28.07

Recovery

July 10th

Aug. 24th

Sept. 21st

WEEK

1

2

3

4

5

6

7

8

9

10

Storm Event

Present



Rail Line: Green Mountain Railroad (GMRC)
Town: Ludlow MP: 28.07

Recovery

July 10th

Aug. 28th

Sept. 21st



Storm Event

Present



Rail Line: Green Mountain Railroad (GMRC)

Town: Ludlow

MP: 28.07

Recovery

July 10th

Aug. 28th

Sept. 21st

WEEK

1

2

3

4

5

6

7

8

9

10

Storm Event

Present



Rail Line: Green Mountain Railroad (GMRC)
Town: Ludlow MP: 28.07

Recovery

July 10th

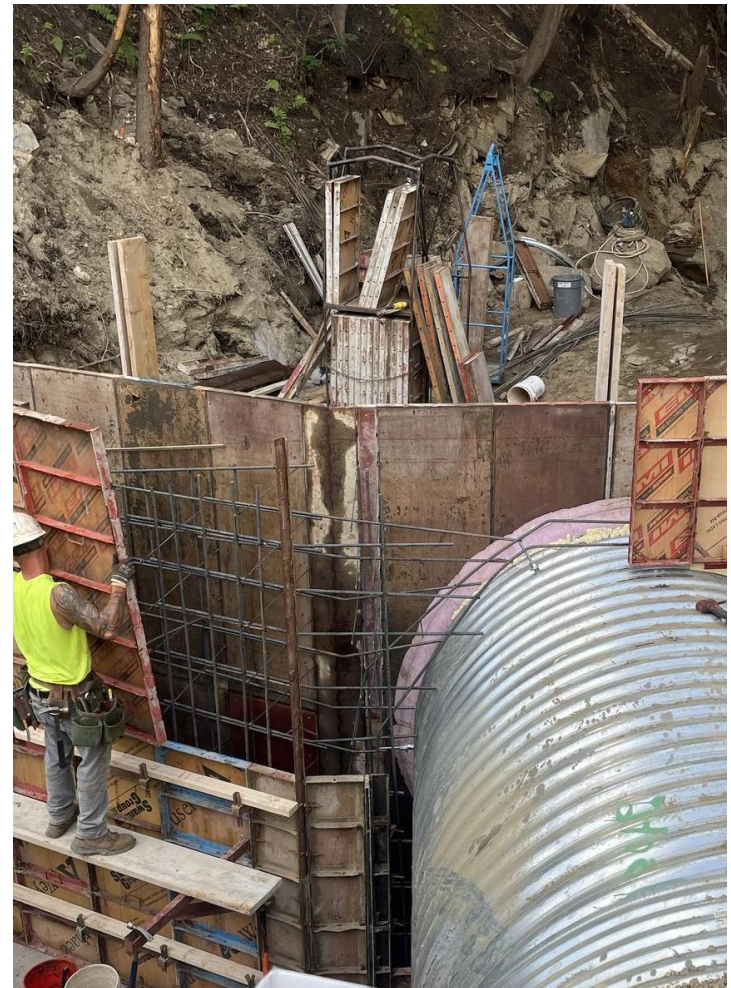
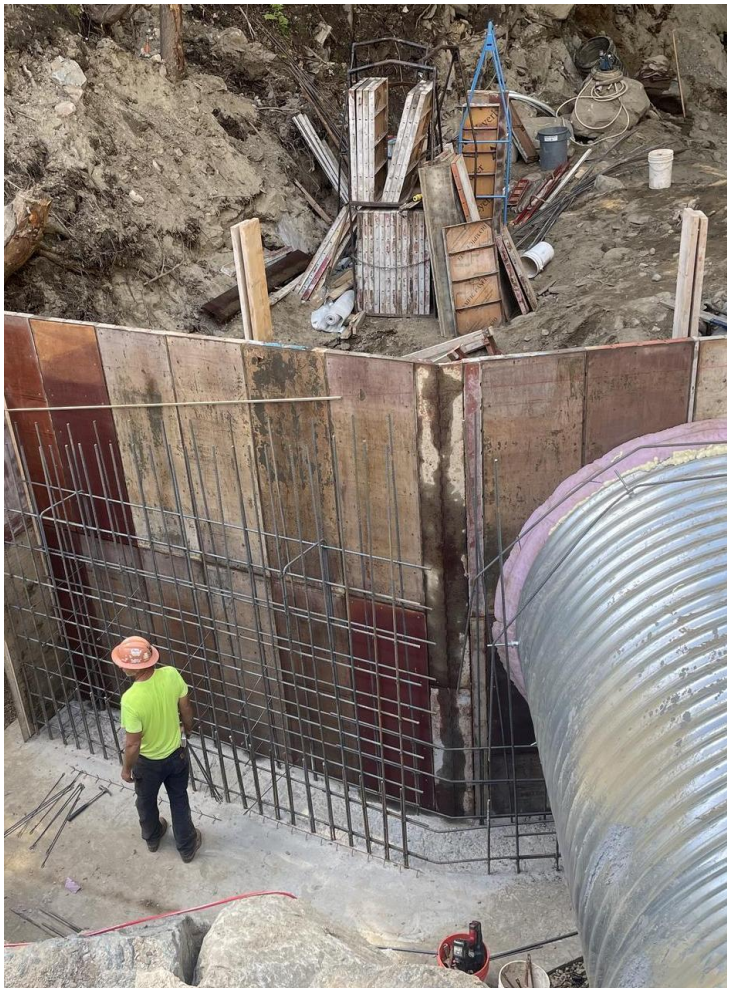
Sept. 6th

Sept. 21st



Storm Event

Present



Rail Line: Green Mountain Railroad (GMRC)
Town: Ludlow MP: 28.07

Recovery

July 10th

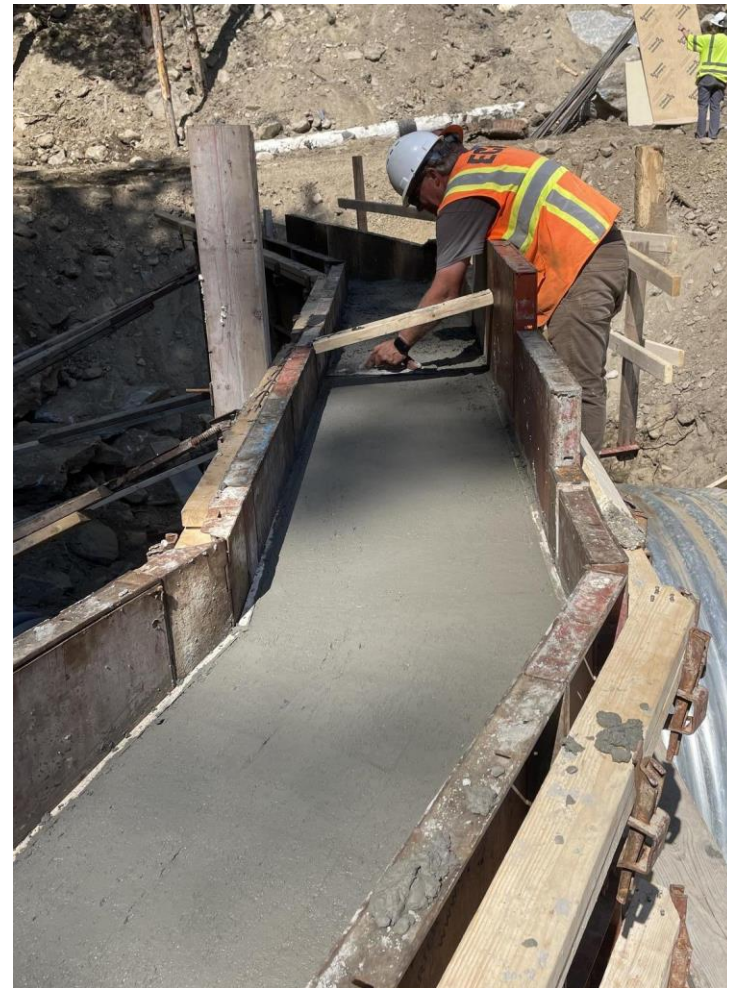
Sept. 7th

Sept. 21st

WEEK | 1 | 2 | 3 | 4 | 5 | 6 | 7 | 8 | 9 | 10

Storm Event

Present



Rail Line: Green Mountain Railroad (GMRC)
Town: Ludlow MP: 28.07

Recovery

July 10th

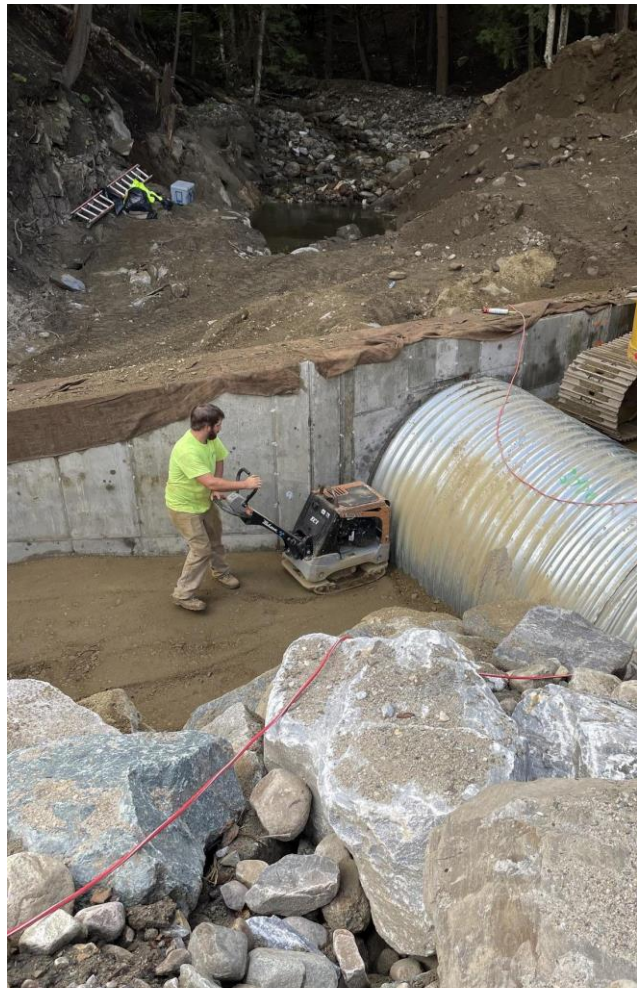
Sept. 12th

Sept. 21st



Storm Event

Present



Rail Line: Green Mountain Railroad (GMRC)
Town: Ludlow MP: 28.07

Recovery

July 10th

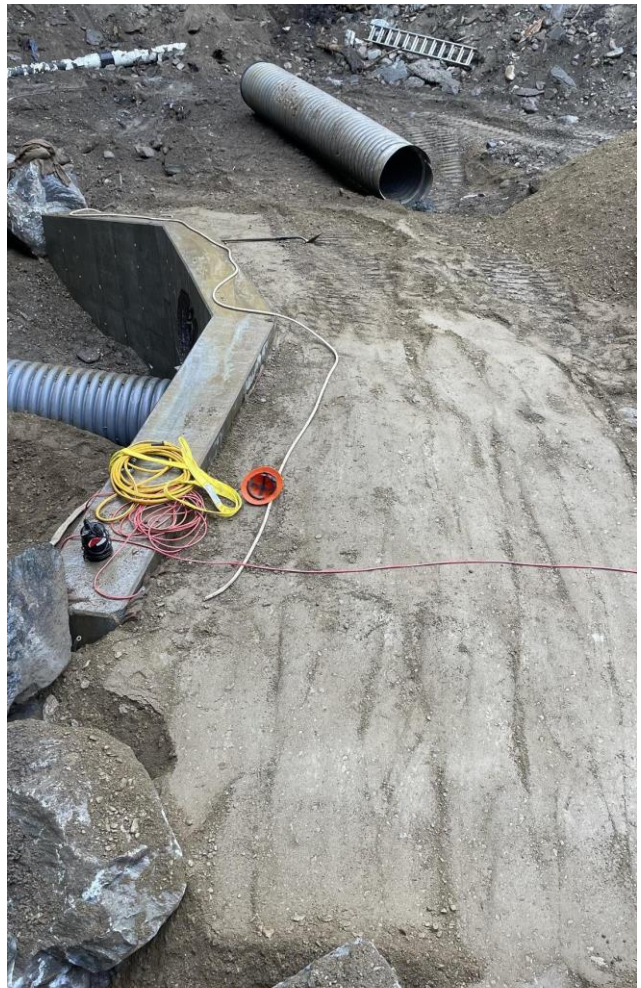
Sept. 13th

Sept. 21st

WEEK 1 2 3 4 5 6 7 8 9 10

Storm Event

Present



Rail Line: Green Mountain Railroad (GMRC)

Town: Ludlow

MP: 28.07

Recovery

Sept. 13th



Sept. 21st

July 10th

WEEK

1

2

3

4

5

6

7

8

9

10

Storm Event

Present



The July 7-17th, 2023 Storm - Response and Recovery

July 10th, 2023 Storm

**Project Site in Wallingford at MP 39.94
on
Green Mountain Railroad
Bellows Falls Subdivision**

January 31, 2024

Rail Line: Green Mountain Railroad (GMRC)

Town: Wallingford

MP: 39.90

Recovery

July 11th

July 10th



WEEK

1

2

3

4

5

6

7

8

9

10

Sept. 21st

Storm Event

Present



Rail Line: Green Mountain Railroad (GMRC)

Town: Wallingford

MP: 39.90

Recovery

July 13th

July 10th

Sept. 21st

WEEK

1

2

3

4

5

6

7

8

9

10

Storm Event

Present



Rail Line: Green Mountain Railroad (GMRC)

Town: Wallingford

MP: 39.90

Recovery

July 10th

July 17th



WEEK

1

2

3

4

5

6

7

8

9

10

Sept. 21st

Storm Event

Present



Rail Line: Green Mountain Railroad (GMRC)

Town: Wallingford

MP: 39.90

Recovery

July 10th

July 19th



WEEK

1

2

3

4

5

6

7

8

9

10

Sept. 21st

Storm Event

Present



Rail Line: Green Mountain Railroad (GMRC)
Town: Wallingford MP: 39.90

Recovery

July 10th
July 22nd



Sept. 21st



Storm Event

Present



Rail Line: Green Mountain Railroad (GMRC)

Town: Wallingford

MP: 39.90

Recovery

July 10th

July 24th



WEEK

1

2

3

4

5

6

7

8

9

10

Sept. 21st

Storm Event

Present



Rail Line: Green Mountain Railroad (GMRC)
Town: Wallingford MP: 39.90

Recovery

July 10th

July 25th

Sept. 21st



Storm Event

Present



Rail Line: Green Mountain Railroad (GMRC)

Town: Wallingford

MP: 39.90

Recovery

July 10th

July 28th

Sept. 21st

WEEK

1

2

3

4

5

6

7

8

9

10

Storm Event

Present



Rail Line: Green Mountain Railroad (GMRC)

Town: Wallingford

MP: 39.90

Recovery

July 10th

July 28th



Sept. 21st

WEEK

1

2

3

4

5

6

7

8

9

10

Storm Event

Present



Rail Line: Green Mountain Railroad (GMRC)

Town: Wallingford

MP: 39.90

Recovery

July 10th

July 29th

Sept. 21st

WEEK

1

2

3

4

5

6

7

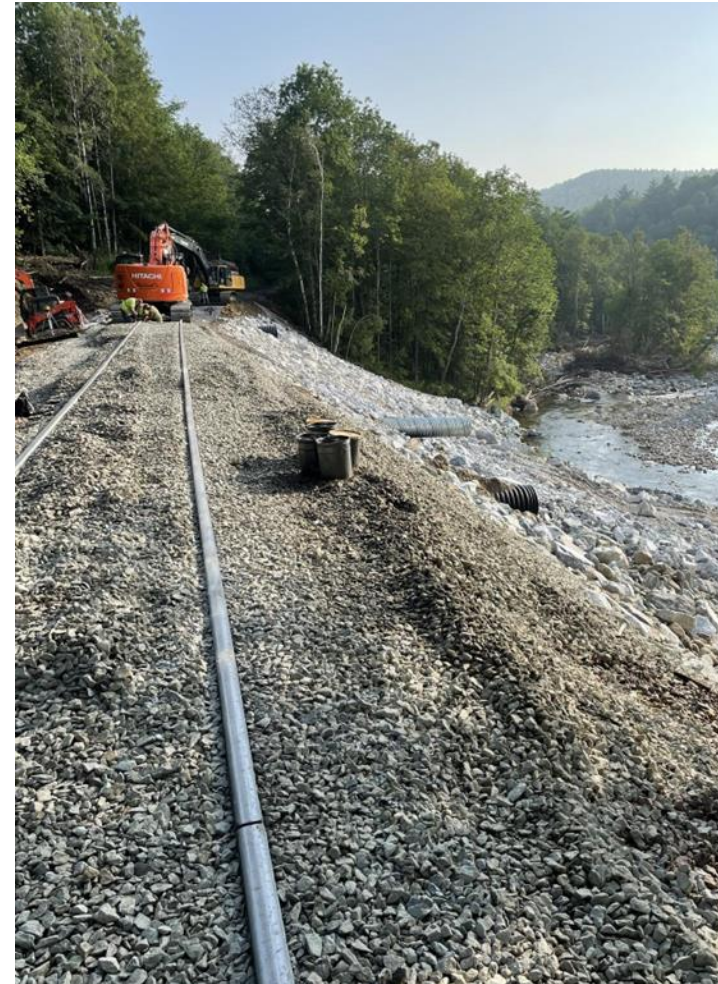
8

9

10

Storm Event

Present



Rail Line: Green Mountain Railroad (GMRC)

Town: Wallingford

MP: 39.90

Recovery

July 10th

July 31st

Sept. 21st

WEEK

1

2

3

4

5

6

7

8

9

10

Storm Event

Present



Rail Line: Green Mountain Railroad (GMRC)
Town: Wallingford MP: 39.90

Recovery

July 10th

July 31st

Sept. 21st



Storm Event

Present



Rail Line: Green Mountain Railroad (GMRC)

Town: Wallingford

MP: 39.90

August 2nd



Recovery

July 10th

Sept. 21st

WEEK

1

2

3

4

5

6

7

8

9

10

Storm Event

Present



Rail Line: Green Mountain Railroad (GMRC)

Town: Wallingford

MP: 39.90

August 4th

Recovery

July 10th

Sept. 21st

WEEK

1

2

3

4

5

6

7

8

9

10

Storm Event

Present



Rail Line: Green Mountain Railroad (GMRC)

Town: Wallingford

MP: 39.90

August 4th



Recovery

July 10th

Sept. 21st

WEEK

1

2

3

4

5

6

7

8

9

10

Storm Event

Present



Rail Line: Green Mountain Railroad (GMRC)

Town: Wallingford

MP: 39.90

August 4th



Recovery

July 10th

Sept. 21st

WEEK

1

2

3

4

5

6

7

8

9

10

Storm Event

Present



July 10th, 2023 Storm

Project Site in Berlin, Bridge 307 at MP 3.5
on
Washington County Railroad
Montpelier & Barre Subdivision

January 31, 2024

Rail Line: Washington Country Railroad (WACR) – Montpelier & Barre

Town: Berlin

MP: 3.5 BR307

Recovery

July 15th

July 10th

Sept. 21st

WEEK

1

2

3

4

5

6

7

8

9

10

Storm Event

Present



Rail Line: Washington Country Railroad (WACR) – Montpelier & Barre

Town: Berlin

MP: 3.5 BR307

Recovery

July 10th

July 23rd



WEEK

1

2

3

4

5

6

7

8

9

10

Sept. 21st

Storm Event

Present



Rail Line: Washington Country Railroad (WACR) – Montpelier & Barre

Town: Berlin

MP: 3.5 BR307

Recovery

July 10th

July 24th



Sept. 21st

WEEK

1

2

3

4

5

6

7

8

9

10

Storm Event

Present



Rail Line: Washington Country Railroad (WACR) – Montpelier & Barre

Town: Berlin

MP: 3.5 BR307

Recovery

July 10th

July 25th



WEEK

1

2

3

4

5

6

7

8

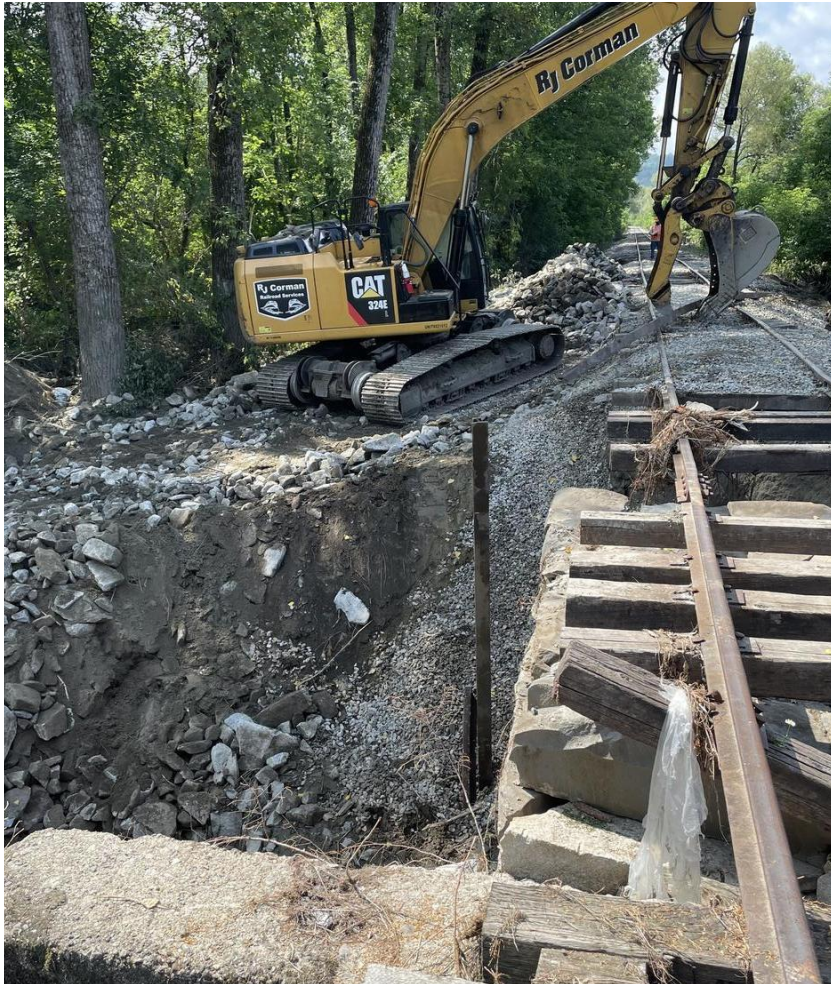
9

10

Sept. 21st

Storm Event

Present



Rail Line: Washington Country Railroad (WACR) – Montpelier & Barre

Town: Berlin

MP: 3.5 BR307

Recovery

July 10th

July 27th



Sept. 21st

WEEK

1

2

3

4

5

6

7

8

9

10

Storm Event



Present

Rail Line: Washington Country Railroad (WACR) – Montpelier & Barre

Town: Berlin

MP: 3.5 BR307

Recovery

July 10th

July 28th



Sept. 21st

WEEK

1

2

3

4

5

6

7

8

9

10

Storm Event

Present



Rail Line: Washington Country Railroad (WACR) – Montpelier & Barre

Town: Berlin

MP: 3.5 BR307

Recovery

July 10th

July 29th



Sept. 21st

WEEK

1

2

3

4

5

6

7

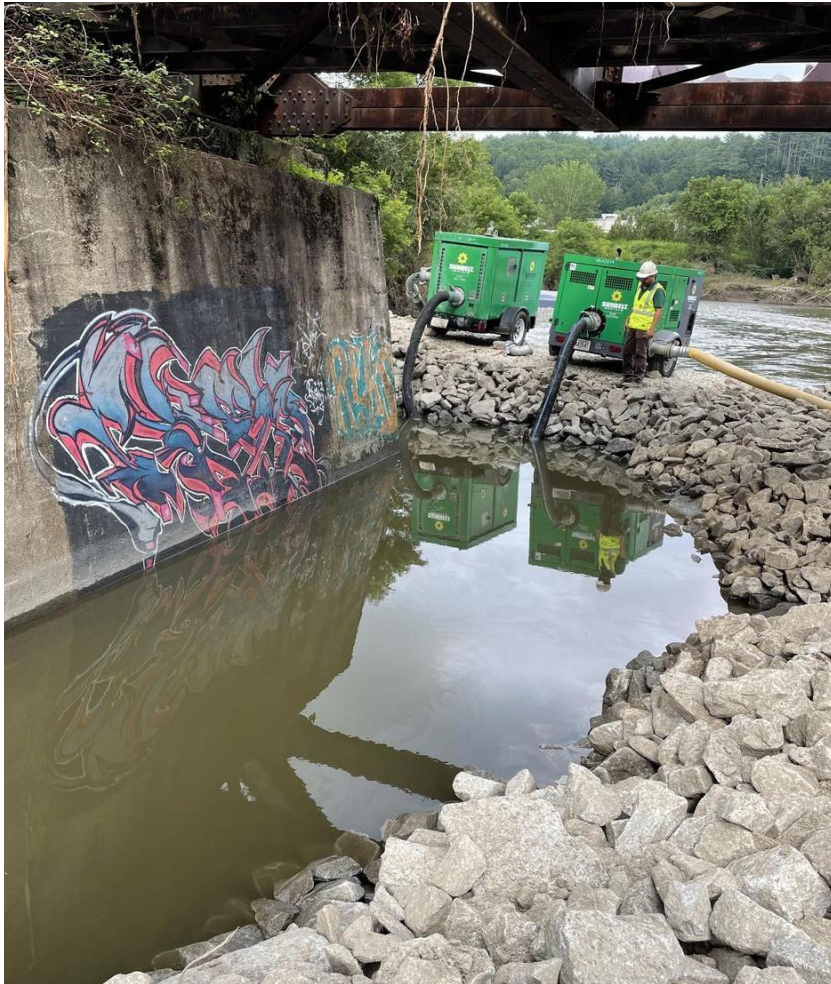
8

9

10

Storm Event

Present



Rail Line: Washington Country Railroad (WACR) – Montpelier & Barre

Town: Berlin

MP: 3.5 BR307

Recovery

July 10th

July 31th

Sept. 21st

WEEK

1

2

3

4

5

6

7

8

9

10

Storm Event

Present



Rail Line: Washington Country Railroad (WACR) – Montpelier & Barre

Town: Berlin

MP: 3.5 BR307

August 4th

Recovery

July 10th

Sept. 21st

WEEK

1

2

3

4

5

6

7

8

9

10

Storm Event

Present



Rail Line: Washington Country Railroad (WACR) – Montpelier & Barre

Recovery

Town: Berlin

MP: 3.5 BR307

August 7th

July 10th

Sept. 21st

WEEK

1

2

3

4

5

6

7

8

9

10

Storm Event

Present



The July 7-17th, 2023 Storm - Response and Recovery

Rail Line: Washington Country Railroad (WACR) – Montpelier & Barre

Town: Berlin

MP: 3.5 BR307

August 7th

Recovery

July 10th

Sept. 21st

WEEK

1

2

3

4

5

6

7

8

9

10

Storm Event

Present



Rail Line: Washington Country Railroad (WACR) – Montpelier & Barre

Town: Berlin

MP: 3.5 BR307
August 9th

Recovery

July 10th

Sept. 21st

WEEK

1

2

3

4

5

6

7

8

9

10

Storm Event

Present



Rail Line: Washington Country Railroad (WACR) – Montpelier & Barre

Town: Berlin

MP: 3.5 BR307
August 10th

Recovery

July 10th

Sept. 21st

WEEK

1

2

3

4

5

6

7

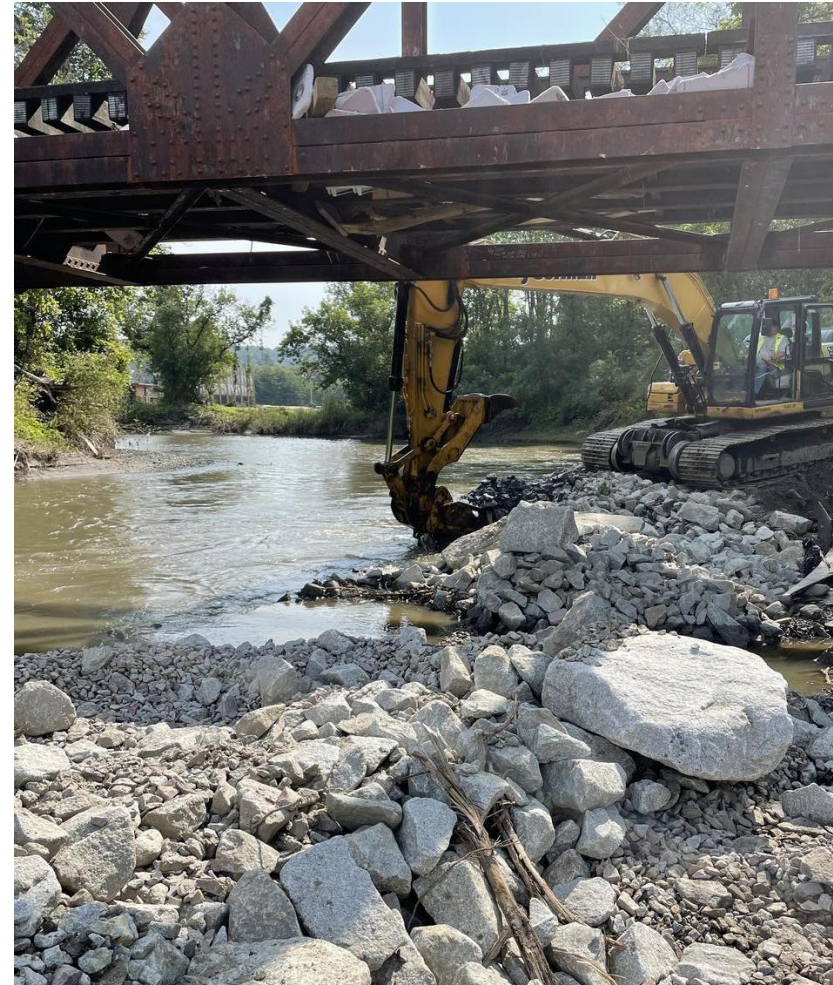
8

9

10

Storm Event

Present



Rail Line: Washington Country Railroad (WACR) – Montpelier & Barre

Town: Berlin

MP:

Recovery

July 10th

August 21st

Sept. 21st

WEEK

1

2

3

4

5

6

7

8

9

10

Storm Event

Present



The July 7-17th, 2023 Storm - Response and Recovery

Rail Line: Washington Country Railroad (WACR) – Montpelier & Barre

Town: Berlin

MP: 3.5 BR307

Recovery

July 10th

August 21st

Sept. 21st

WEEK

1

2

3

4

5

6

7

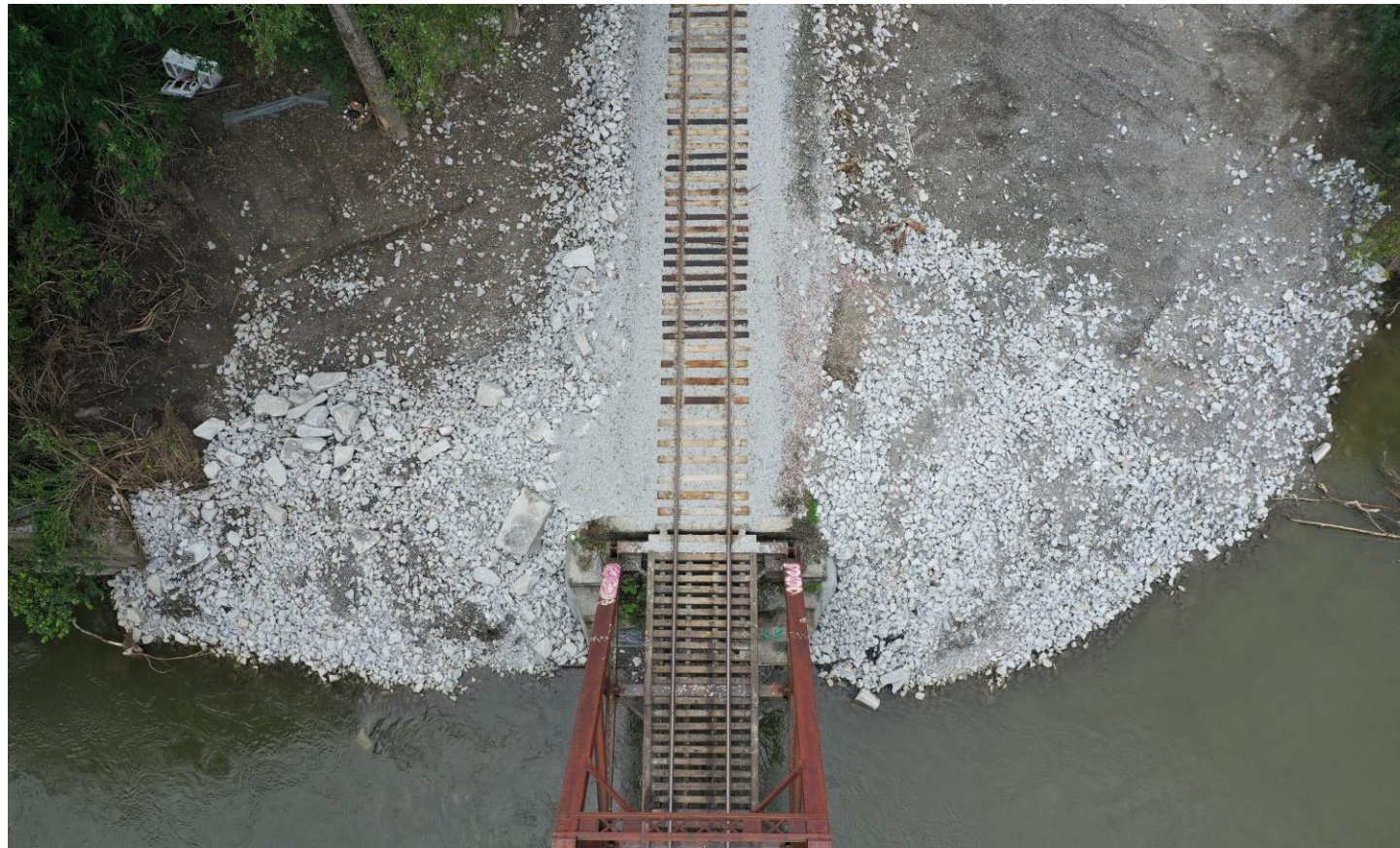
8

9

10

Storm Event

Present



July 10th, 2023 Storm

Project Site in Barre City, Rail Yard at MP 6.8 – 7.9
on
Washington County Railroad
Montpelier & Barre Subdivision

January 31, 2024

Rail Line: Washington Country Railroad (WACR) – Montpelier & Barre

Town: Barre City

MP: 6.8 – 7.9

Recovery

July 11th

July 10th

WEEK

1

2

3

4

5

6

7

8

9

10

Sept. 21st

Storm Event

Present



Rail Line: Washington Country Railroad (WACR) – Montpelier & Barre

Town: Barre City

MP: 6.8 – 7.9

Recovery

July 11th

July 10th

WEEK

1

2

3

4

5

6

7

8

9

10

Sept. 21st

Present

Storm Event



Rail Line: Washington Country Railroad (WACR) – Montpelier & Barre

Recovery

Town: Barre City
July 20th

MP: 6.8 - 7.9

July 10th



Sept. 21st

WEEK

1

2

3

4

5

6

7

8

9

10

Storm Event

Present



Rail Line: Washington Country Railroad (WACR) – Montpelier & Barre

Recovery

Town: Barre City
July 20th

MP: 6.8 - 7.9

July 10th



Sept. 21st

WEEK

1

2

3

4

5

6

7

8

9

10

Storm Event

Present



Rail Line: Washington Country Railroad (WACR) – Montpelier & Barre

Recovery

Town: Barre City
July 20th

MP: 6.8 - 7.9

July 10th

Sept. 21st

WEEK

1

2

3

4

5

6

7

8

9

10

Storm Event

Present



Rail Line: Washington Country Railroad (WACR) – Montpelier & Barre

Recovery

Town: Barre City
July 20th

MP: 6.8 – 7.9

July 10th

Sept. 21st



Storm Event

Present



Rail Line: Washington Country Railroad (WACR) – Montpelier & Barre

Town: Barre City

July 20th

MP: 6.8 – 7.9

Recovery

Sept. 21st

Present

July 10th

WEEK

1

2

3

4

5

6

7

8

9

10

Storm Event



Rail Line: Washington Country Railroad (WACR) – Montpelier & Barre

Town: Barre City

MP: 6.8 – 7.9

Recovery

July 10th

July 22nd



WEEK

1

2

3

4

5

6

7

8

9

10

Sept. 21st

Storm Event

Present



Rail Line: Washington Country Railroad (WACR) – Montpelier & Barre

Town: Barre City

MP: 6.8 – 7.9

Recovery

July 10th

July 25th



Sept. 21st



Storm Event

Present



Rail Line: Washington Country Railroad (WACR) – Montpelier & Barre

Town: Barre City

MP: 6.8 – 7.9

Recovery

July 10th

July 25th



Sept. 21st



Storm Event

Present



Rail Line: Washington Country Railroad (WACR) – Montpelier & Barre

Town: Barre City

MP: 6.8 – 7.9

Recovery

July 30th



July 10th

Sept. 21st

WEEK

1

2

3

4

5

6

7

8

9

10

Storm Event

Present



Rail Line: Washington Country Railroad (WACR) – Montpelier & Barre

Town: Barre City

MP: 6.8 – 7.9

August 1st



Recovery

July 10th

Sept. 21st

WEEK

1

2

3

4

5

6

7

8

9

10

Storm Event

Present



Rail Line: Washington Country Railroad (WACR) – Montpelier & Barre

Town: Barre City

MP: 6.8 – 7.9

August 2nd

Recovery

July 10th

Sept. 21st

WEEK

1

2

3

4

5

6

7

8

9

10

Storm Event

Present



Rail Line: Washington Country Railroad (WACR) – Montpelier & Barre

Town: Barre City

MP: 6.8 – 7.9

August 2nd



Recovery

July 10th

Sept. 21st

WEEK

1

2

3

4

5

6

7

8

9

10

Storm Event

Present



Rail Line: Washington Country Railroad (WACR) – Montpelier & Barre

Recovery

Town: Barre City

MP: 6.8 – 7.9
August 4th

July 10th

Sept. 21st

WEEK

1

2

3

4

5

6

7

8

9

10

Storm Event

Present



Rail Line: Washington Country Railroad (WACR) – Montpelier & Barre

Recovery

Town: Barre City

MP: 6.8 – 7.9

August 4th

July 10th

Sept. 21st

WEEK

1

2

3

4

5

6

7

8

9

10

Storm Event

Present



Rail Line: Washington Country Railroad (WACR) – Montpelier & Barre

Town: Barre City

MP: 6.8 – 7.9

August 4th

Recovery

July 10th

Sept. 21st

WEEK

1

2

3

4

5

6

7

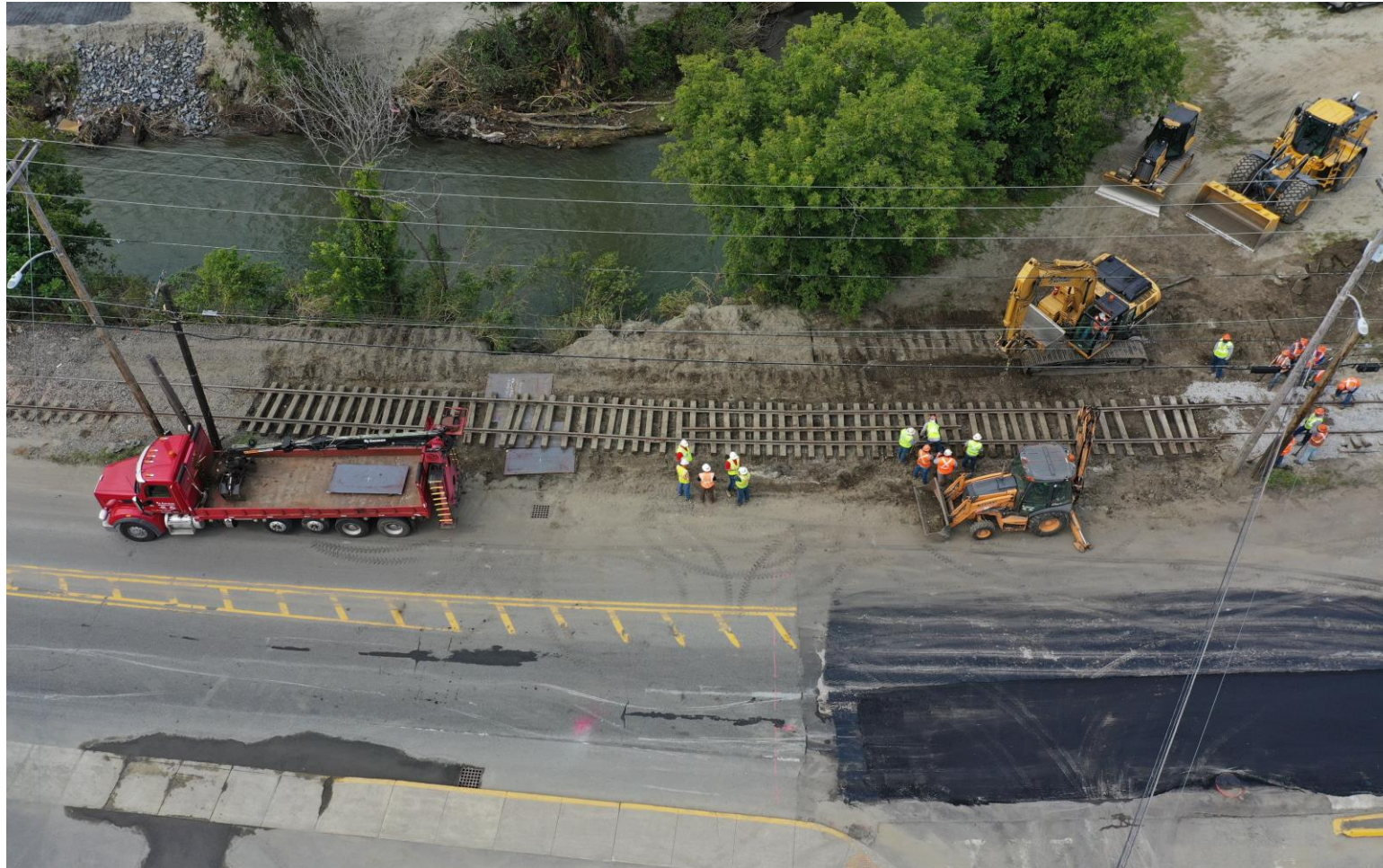
8

9

10

Storm Event

Present



The July 7-17th, 2023 Storm - Response and Recovery

Rail Line: Washington Country Railroad (WACR) – Montpelier & Barre

Town: Barre City

MP: 6.8 – 7.9
August 9th

Recovery

July 10th

Sept. 21st

WEEK

1

2

3

4

5

6

7

8

9

10

Storm Event

Present



Rail Line: Washington Country Railroad (WACR) – Montpelier & Barre

Town: Barre City

MP: 6.8 – 7.9

August 13th

Recovery

July 10th

Sept. 21st

WEEK

1

2

3

4

5

6

7

8

9

10

Storm Event

Present



Rail Line: Washington Country Railroad (WACR) – Montpelier & Barre

Town: Barre City

MP: 6.8 – 7.9

August 15th

Recovery

July 10th

Sept. 21st

WEEK

1

2

3

4

5

6

7

8

9

10

Storm Event

Present



July 10th, 2023 Storm

**Project Site in Barre Town at MP 9.3
on
Washington County Railroad
Montpelier & Barre Subdivision**

January 31, 2024

Rail Line: Washington Country Railroad (WACR) – Montpelier & Barre

Town: Barre Town

MP: 9.3

Recovery

July 13th

July 10th



WEEK

1

2

3

4

5

6

7

8

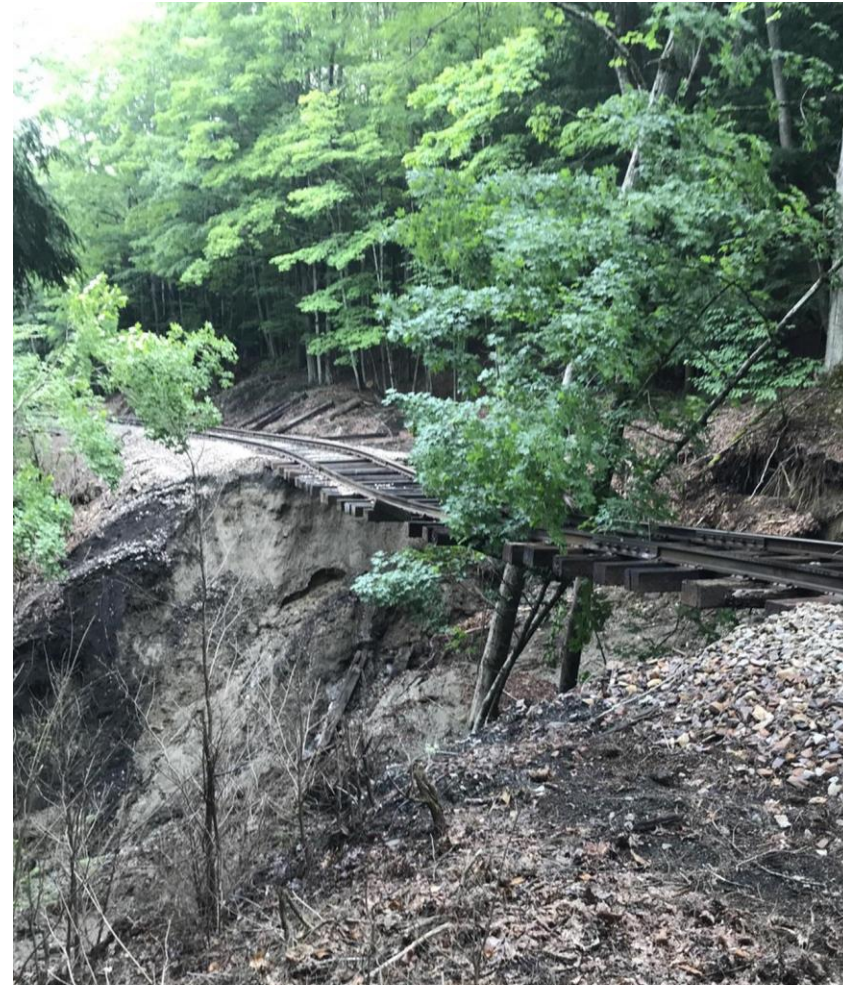
9

10

Sept. 21st

Storm Event

Present



Rail Line: Washington Country Railroad (WACR) – Montpelier & Barre

Town: Barre Town

MP: 9.3

Recovery

July 10th

July 23th



WEEK

1

2

3

4

5

6

7

8

9

10

Sept. 21st

Storm Event

Present



Rail Line: Washington Country Railroad (WACR) – Montpelier & Barre

Town: Barre Town

MP: 9.3

Recovery

July 10th

July 25th



Sept. 21st

WEEK

1

2

3

4

5

6

7

8

9

10

Storm Event

Present



Rail Line: Washington Country Railroad (WACR) – Montpelier & Barre

Town: Barre Town

MP: 9.3

Recovery

July 10th

July 25th



Sept. 21st

WEEK

1

2

3

4

5

6

7

8

9

10

Storm Event

Present



Rail Line: Washington Country Railroad (WACR) – Montpelier & Barre

Town: Barre Town

MP: 9.3

Recovery

July 10th

July 28th



Sept. 21st

WEEK

1

2

3

4

5

6

7

8

9

10

Storm Event

Present



Rail Line: Washington Country Railroad (WACR) – Montpelier & Barre

Town: Barre Town

MP: 9.3

Recovery

July 10th

July 30th



Sept. 21st

WEEK

1

2

3

4

5

6

7

8

9

10

Storm Event

Present



Rail Line: Washington Country Railroad (WACR) – Montpelier & Barre

Town: Barre Town

MP: 9.3

August 2nd

Recovery

July 10th

Sept. 21st

WEEK

1

2

3

4

5

6

7

8

9

10

Storm Event

Present



Thank you

Questions?

January 31, 2024



VT RAIL AND AVIATION BUREAU
DIRECTOR DAN DELABRUERE
&
VERMONT RAIL SYSTEMS
PRESIDENT SELDEN HOUGHTON