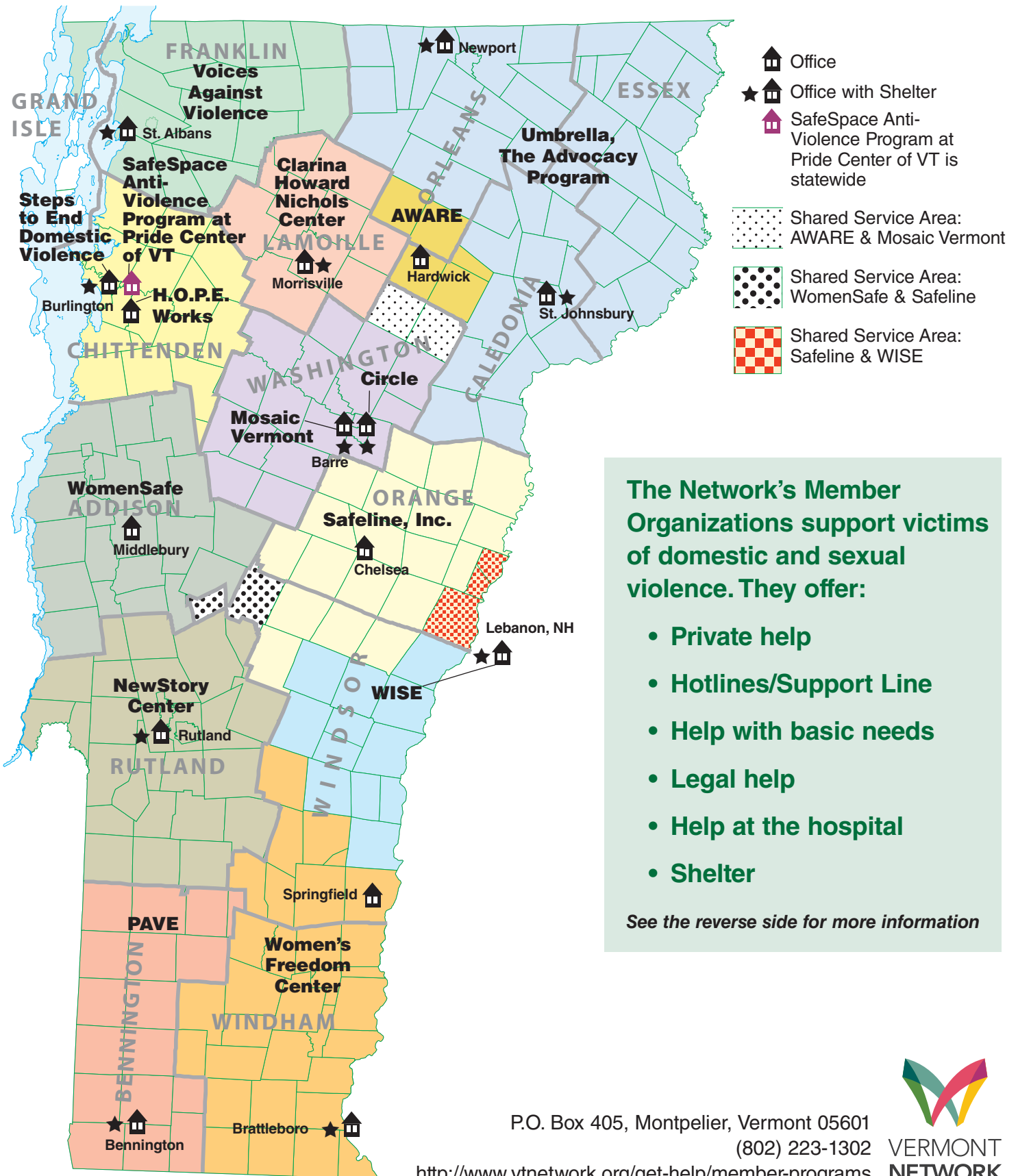


Member Organizations of the Vermont Network Against Domestic and Sexual Violence



The Network's Member Organizations support victims of domestic and sexual violence. They offer:

- Private help
- Hotlines/Support Line
- Help with basic needs
- Legal help
- Help at the hospital
- Shelter

See the reverse side for more information

Vermont Network Member Organizations

AWARE, Inc.

**Caledonia, Wash., & Orleans Counties
(of Hardwick area)**
Hotline: 802/472.6463
Office: 802/472.6463
www.awarevt.org

Circle*

Washington County
Hotline: 1.877.543.9498
Office: 802/476.6010
www.circlevt.org

Clarina Howard Nichols Center*

Lamoille County
Hotline: 802/888.5256
Office: 802/888.2584
www.clarina.org

H.O.P.E. Works

Chittenden County
Hotline: 802/863.1236
Office: 802/864.0555
www.hopeworksvt.org

Mosaic Vermont, Inc.*

Washington County
Hotline: 802/479.5577
Office: 802/476.1388
www.mosaic-vt.org

NewStory Center*

Rutland County
Hotline: 802/775.3232
Office: 802/775.3232
www.nscvt.org

PAVE*

Bennington County
Hotline: 802/442.2111
Office: 802/442.2370
www.pavebennington.org

Safeline, Inc.

**Orange County & Northern
Windsor County**
Hotline: 1.800.639.7233
Office: 802/685.7900
www.safelinevt.org

SafeSpace Anti-Violence Program at Pride Center of VT Statewide

Support Line: 802-863-0003 or
Toll-free: 866-869-7341
Phone: 802-860-7812
www.pridecentervt.org/programs/
safespace

Steps to End Domestic Violence*

Chittenden County
Hotline: 802/658.1996
Office: 802/658.3131
www.stepsVT.org

Umbrella, The Advocacy Program**

Caledonia, Orleans, & Essex Counties
St. J. Hotline: 802/748.8645
Newport Hotline: 802/334.0148
St. J. Office: 802/748.8645
Newport Office: 802/334.0148
www.umbrellanek.org

Voices Against Violence*

Franklin & Grand Isle Counties
Hotline: 802/524.6575
Office: 802/524.8538
www.voicesagainstviolence.org

WISE*

**Central Windsor County & towns of
Thetford & Fairlee**
Crisis line: 603/448.5525 or
toll-free 1.866.348.WISE
Office: 603/448.5922
www.WISEuv.org

Women's Freedom Center*

**Windham County &
Southern Windsor County**
Brattleboro Hotline: 802/254.6954 or
1.800.773.0689
Springfield Hotline: 802/885.2050
Brattleboro Office: 802/257.7364
Springfield Office: 802/885.2368
http://womensfreedomcenter.net

WomenSafe

Addison County & the town of Rochester
Hotline: 802/388.4205 or 1.800.388.4205
Office: 802/388.9180
www.womensafe.net

**Organization with shelter*

Services of the Member Organizations

Private Help: Network member organizations will not share any information about you unless you allow them to.*

Hotlines/Support Line: Pride Center of VT SafeSpace Program provides a support line 5 days a week.

All other member organizations staff a free hotline 24 hours a day, every day.

Help To Meet Basic Needs: Staff help people learn about resources to meet their basic needs.

Legal Help: Staff give information about legal issues and go with victims to court.

Help at the Hospital: Staff can meet people at the hospital after a sexual or physical assault.

Shelter: Staff help victims find short-term shelter.

**Some staff are "mandated reporters." This means they must report to the state if they believe a child has been abused or neglected. You can ask to speak to someone who is not a "mandated reporter." You can also speak to someone on the hotline without giving your name.*

Other Network Programs That Serve Victims of Domestic and Sexual Violence

DVAS (Deaf Vermonters Advocacy Services)

Videophone & Hearing: 802/461.4707
Text Line: 802/249.0345

DIVAS (Discussing Intimate Violence and

Accessing Support) Support for women incarcerated in Vermont. divas@vtnetwork.org