

VERMONT HOUSING & CONSERVATION BOARD

Homelessness Awareness Day

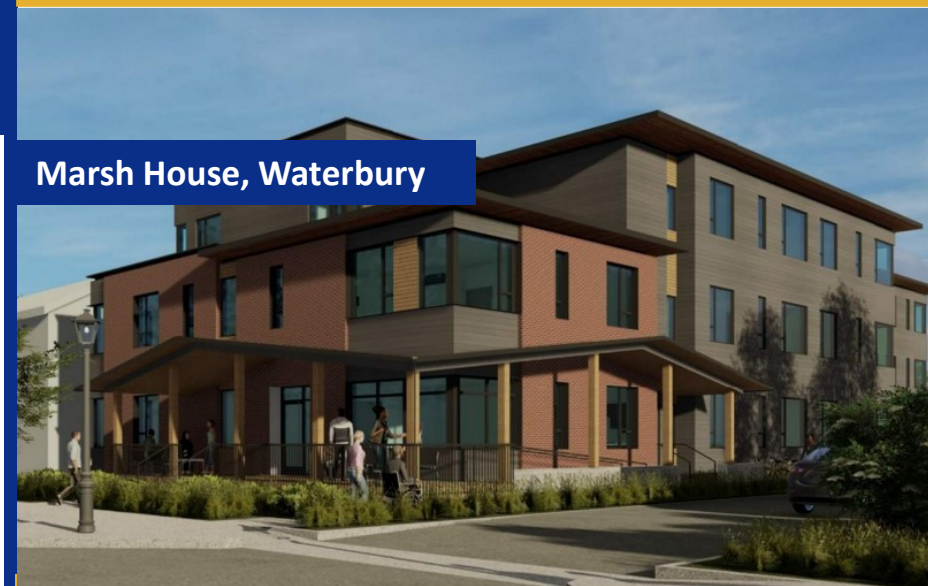
Presented by

Gus Seelig,
Executive Director

Upper Valley Haven, Hartford



Marsh House, Waterbury

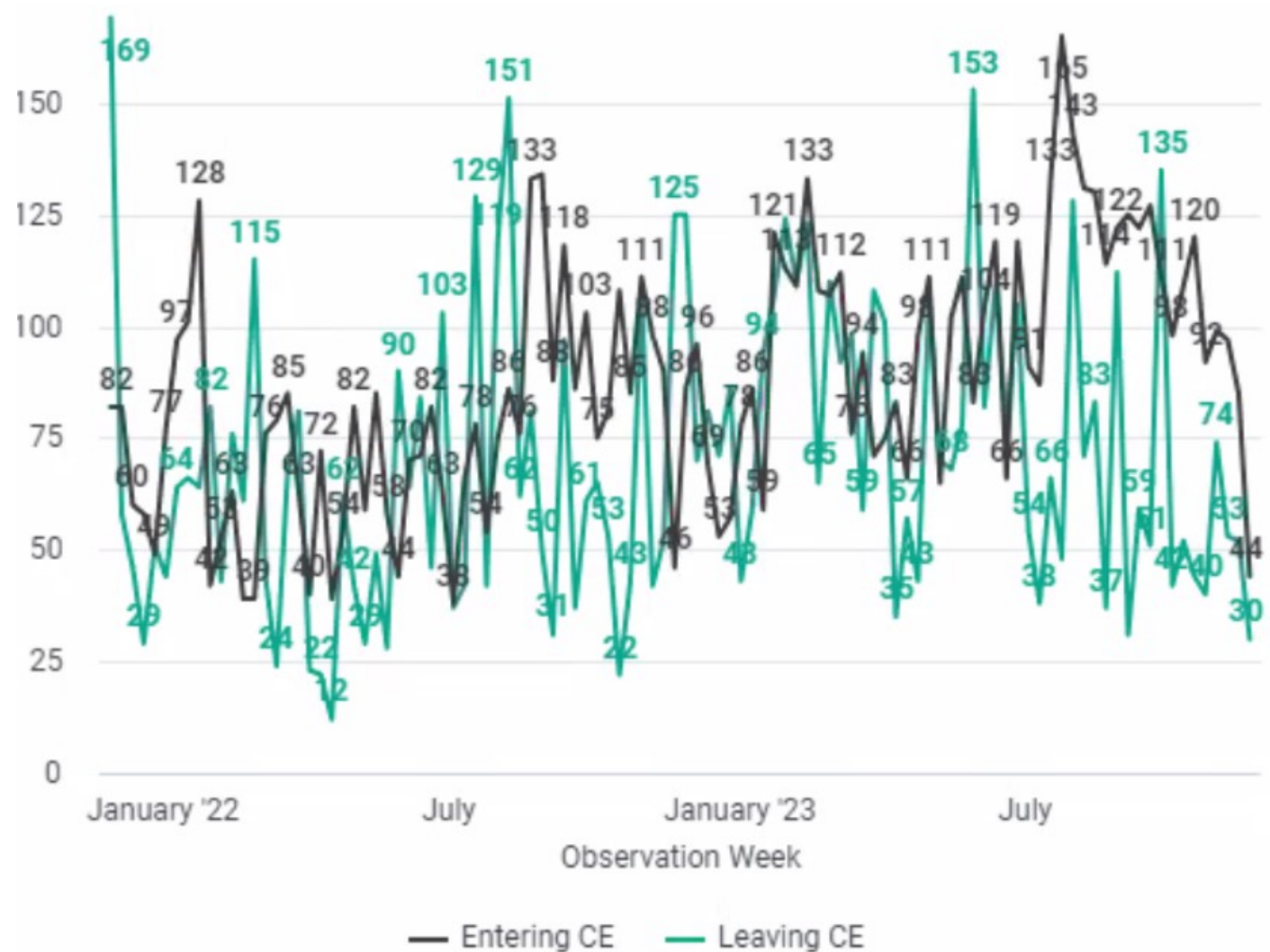


4,114 households rehoused since 2020

Exited to Permanent Destination Breakdown

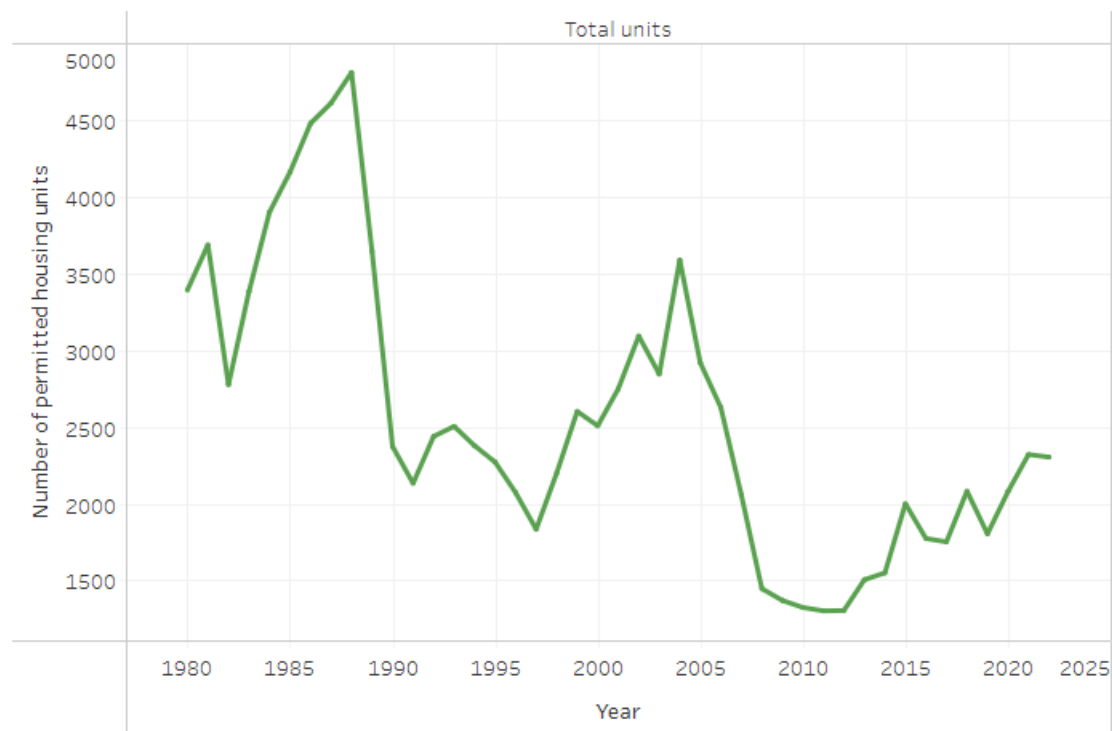
Destination	Count HoHs ▼	Average Days in Project
Rental by client, with ongoing housing subsidy	2,006	247.48
Rental by client, no ongoing housing subsidy	1,368	166.59
Staying or living with family, permanent tenure	414	199.02
Staying or living with friends, permanent tenure	220	172.74
Owned by client, no ongoing housing subsidy	72	181.07
Owned by client, with ongoing housing subsidy	33	221.30
Moved from one HOPWA funded project to HOPWA PH	1	40.00

Households entering and exiting homelessness





Housing Production in VT



COTS Family Housing
Burlington | 16 Units



TNC and Bennington Habitat Home, Pownal



North Pleasant, Bradford



Stuart Avenue, Colchester



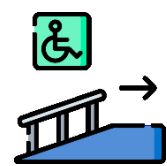
35 Years of Housing



15,000 permanently affordable homes
(rental & homeownership)



2,828 homes with
reduced lead paint hazards

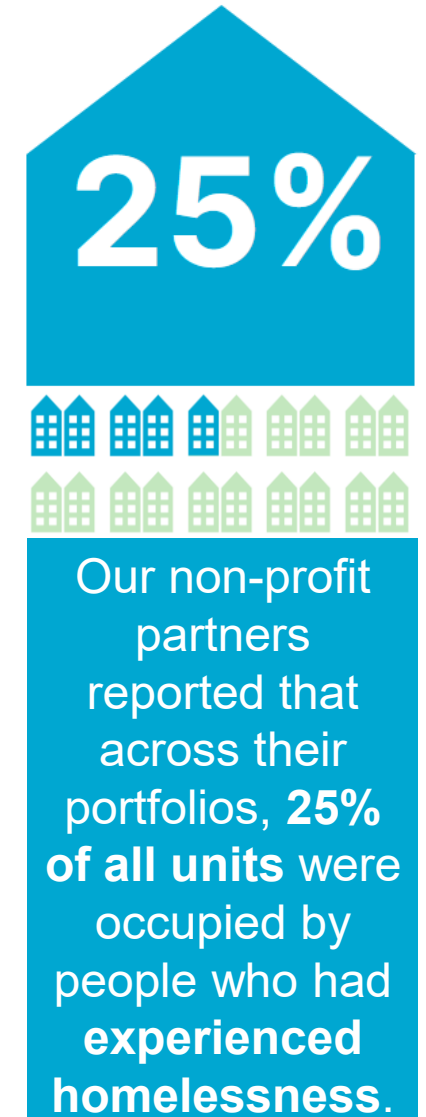
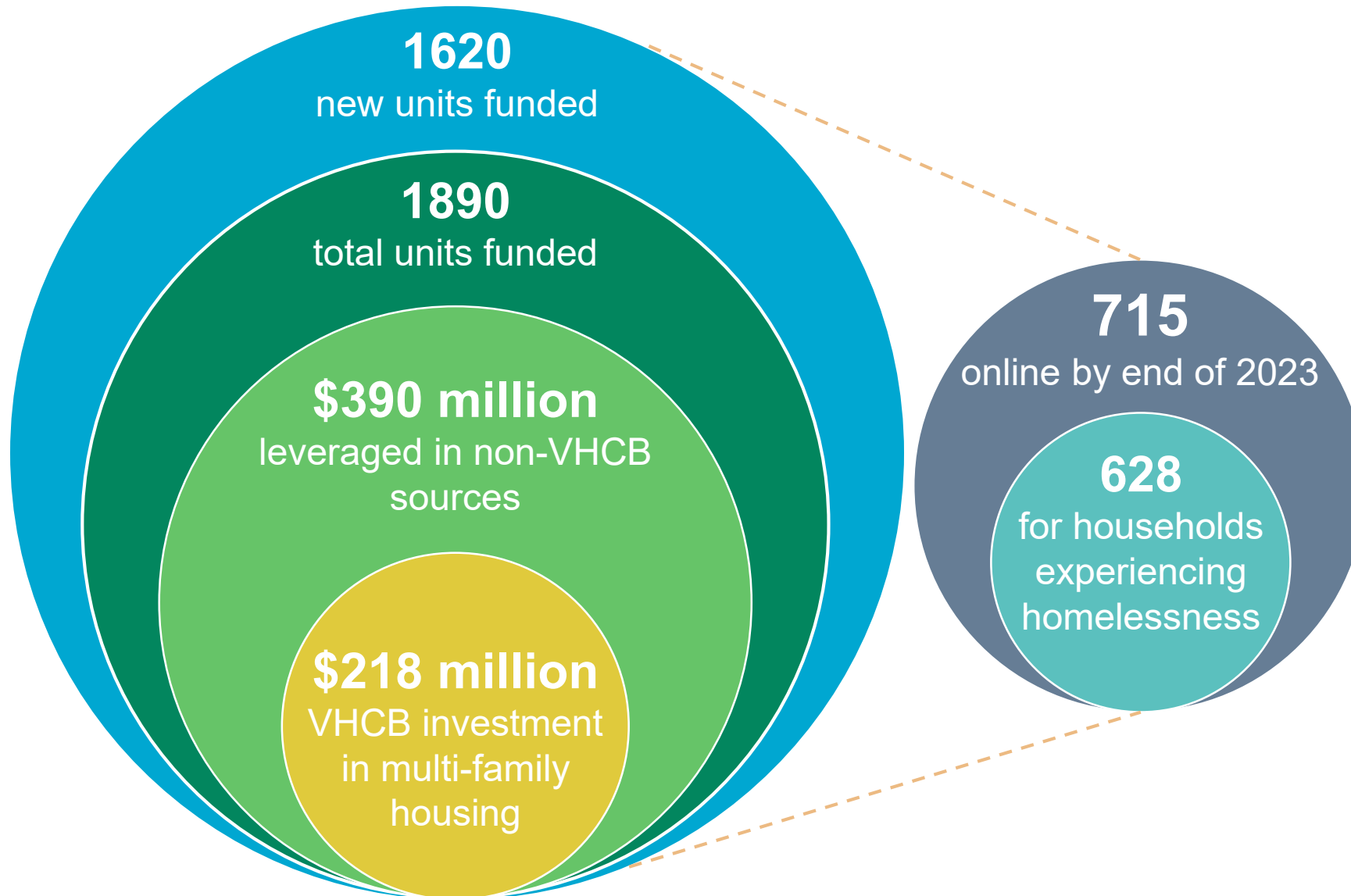


Over 1,700 home access units
for people with disabilities



\$400 million invested
\$2.2 billion leveraged

Rental Housing Investment 2020 - 2023



Affordable Housing Units Newly Leased to Households Experiencing Homelessness



Total units turned over in FY24:

220

Of these units, number leased to households who experienced homelessness:

89

Percentage
40%

1,000+

households experiencing homeless that VHCB helped to house in the past three years

Rental Housing Development



Heaton Street, Montpelier



Brandywine and Farmstead Lofts, South Burlington



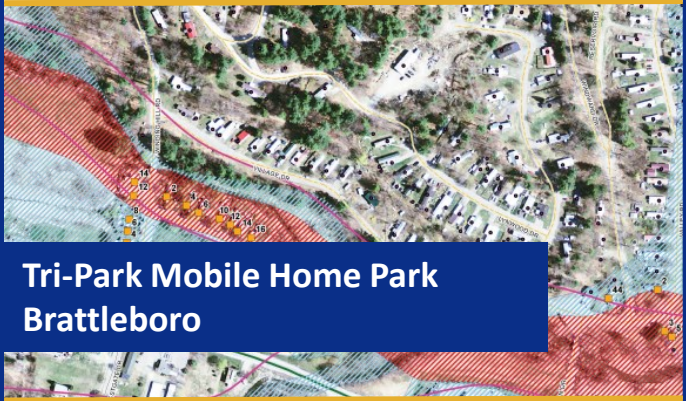
Bellows Falls Garage, Bellows Falls

- Partnerships with non-profit and private developers
- Permanent affordability
- Our investments leverage private and federal capital at 2:1 ratio to bring additional homes to VT

Manufactured Housing Communities



Zero-Energy Ready Homes
Bennington



Tri-Park Mobile Home Park
Brattleboro

Over 35 years, VHCB has invested in over 50 parks supporting over 2,600 homes.

- VHCB allocates state and federal dollars to eligible MHCs
- Eligible activities include:
- feasibility studies, acquisition, refinance, infrastructure funding, lot preparation, infill placement of new homes
- Primarily work with non-profit and cooperatively owned parks.
- Requirement for permanent affordability



Evergreen Mobile Home Park
Hardwick



Braeburn Apartments
20 units, South Burlington



The Chalet
35 units, West Brattleboro



Champlain Inn
50 beds, Burlington



Zephyr Place
72 units, Williston



Quality Inn
Barre

Hotel Conversions

Investing in Shelter

+ SINCE 2020
\$22 million
committed to fund:

496 
shelter beds
198 new 



**Welcome Center
Berlin**



**STEPS
Colchester**



**Groundworks
Brattleboro**



**COTS Family Housing
Burlington**

Capacity of Service Providers and Acuity of Need

THE CHALET
35 units, West Brattleboro



CHAMPLAIN INN
50 beds, Burlington





Beacon Apartments
South Burlington

Partnership with
UVM Medical Center



Juniper House
Burlington

Senior housing



Great River Terrace
Brattleboro

Housing & services for people
experiencing homelessness



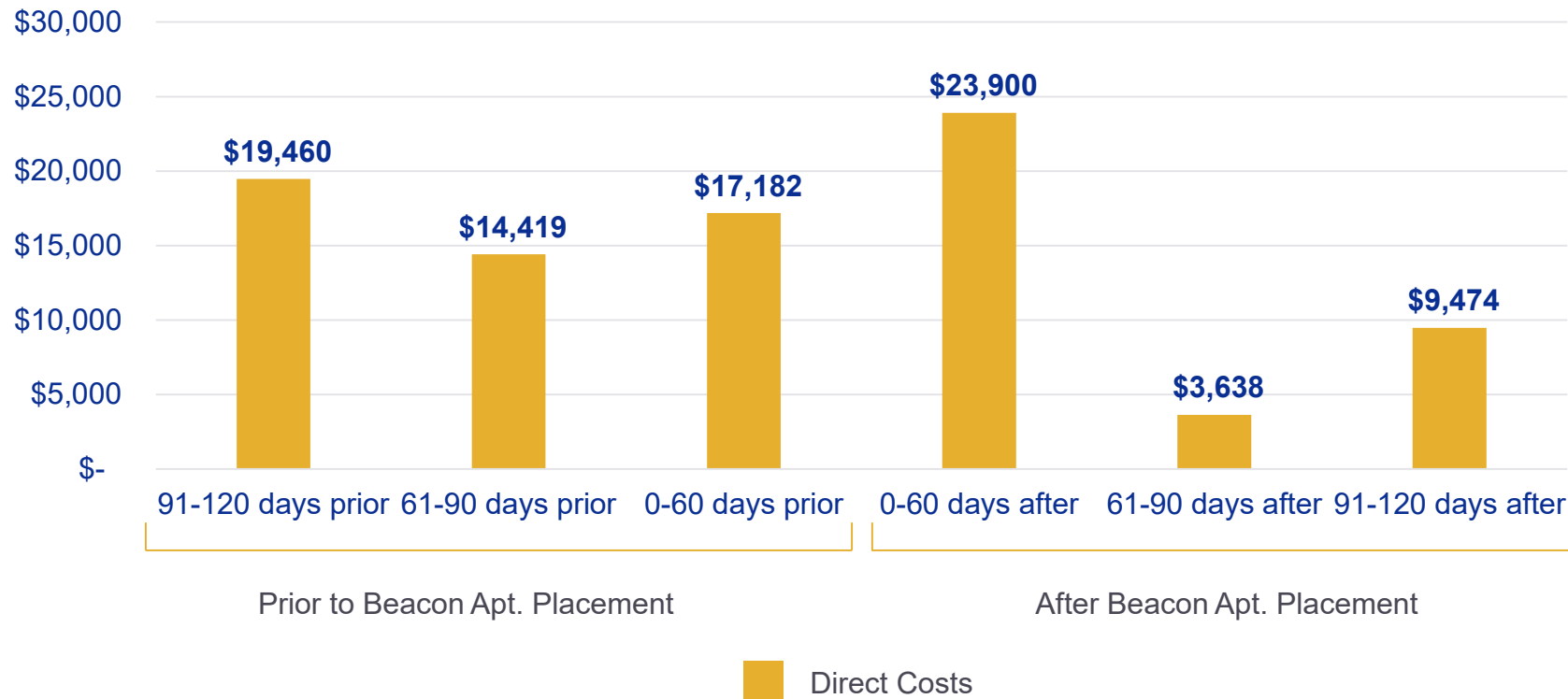
Foundation House
Barre

Recovery housing

Service-Enriched Housing

Beacon Apartments Patient Intervention Study

DIRECT COSTS BEFORE/AFTER PLACEMENT
Updated through August 2017 | 28 Patients



Permanent Affordability

Northgate Apartments in Burlington, **336 homes 100% owned and controlled** by the Northgate Residents Ownership Corporation.



After substantial advocacy work, the landlords agreed not to evict the residents.



Bove Brothers Plan to Evict Low-Income Refugee Families in Winooski – and Raise Rents

By **DEREK BROUWER** and **LIAM ELDER-CONNORS (VPR)**



Published February 16, 2022 at 10:00 a.m. | Updated March 7, 2022 at 6:34 p.m.





Vermont
Housing &
Conservation
Board

THANK YOU

Gus Seelig, gseelig@vhcb.org



Shared Equity Homeowner
Kelly DeFelice, Barre City



Congress Street Apartments
30 units in St. Albans



109 Green Street
Brattleboro



Firehouse Apartments, Bristol
Completed and opened October 2023