

**MEMORANDUM**

**TO:** Representative Lori Houghton, Chair, House Committee on Health Care

**FROM:** Emily Hawes, Commissioner, Department of Mental Health

**DATE:** February 8, 2023

**RE:** Follow up from continued testimony on the Brattleboro Retreat  
Follow up from testimony on the Governor's Proposed FY2024 Budget

---

Brattleboro Retreat Follow up Questions

1. *Were the referral and refusal data provided for instances or for individuals?*

The data provided show "instances" of referrals and refusals.

2. *Provide readmission protocols*

We do not have this. If they meet inpatient criteria, even multiple times, we are able to readmit them. Hospitals track readmission rates within a time span of 30 days.

3. *Provide moving averages of 3-month period of capacity of youth inpatient beds:*

The data provided below covers a 6 month look review of youth inpatient bed capacity. Between the youth and adolescent units, there are a total of 35 beds. This is more than years past as the Retreat is using some beds on a different unit to accommodate the increase in youth waiting and/or the divide the acuity across units.

Youth Inpatient Bed Data			
FY23 July 2022 - December 2022			
Average Values per Month			
Month	Capacity	Occupancy	Closed
Jul	35	15	16
Aug	35	12	18
Sep	35	14	19
Oct	35	18	16
Nov	35	23	10
Dec	35	22	11
6 month total	35	17	15

Analysis performed by DMH Research and Statistics Unit.  
Analysis based on data collected from the DMH Electronic Bed Board based on data entered by Brattleboro Retreat Staff. Values shown in the table are averages per month based on the number of days per month, and for the six month total time period of interest.

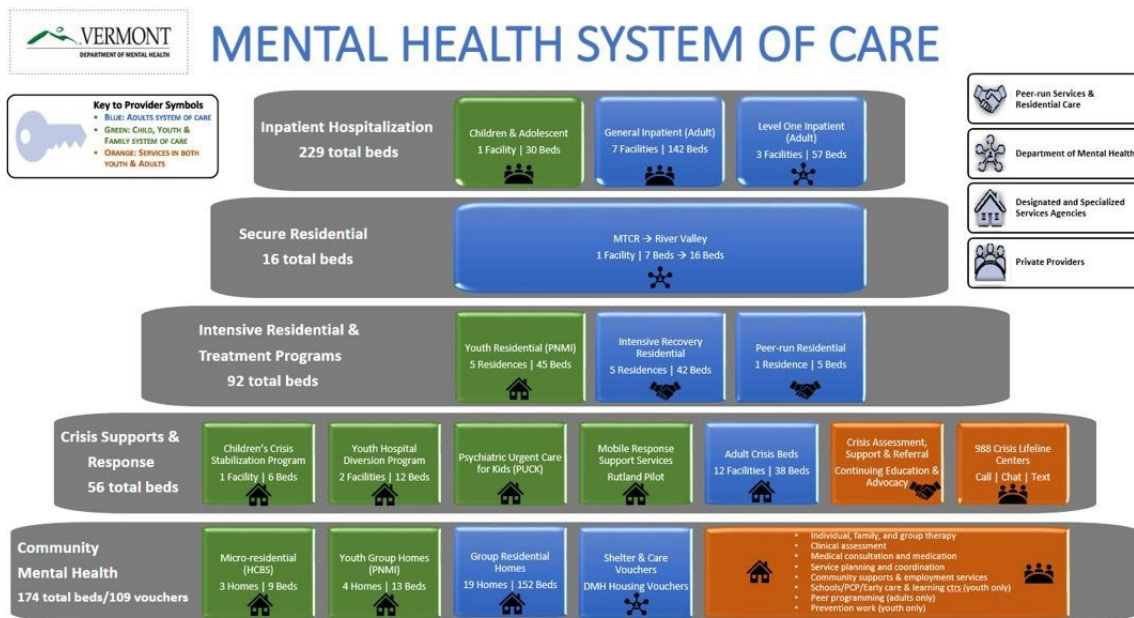


- Provide a range or representative sample of cost per bed to Medicaid for each level of the mental health system of care (see below for a graph illustrating these general categories):

The Department has listed below examples of costs-per-day based on different levels of care and program types. This is not a comprehensive list but can serve as representative samples. The examples below are Medicaid rates per day of service.

- Inpatient Hospitalizations
  - (Level 1 DMH-supported costs) a range of \$2,063/day-\$3,100/day
- Secure Residential
  - The daily cost of MTCR is \$1,260/day
- Intensive Residential & Treatment programs
  - Range for both youth and adults ranges from \$464/day to \$1,031.06/day
- Crisis Supports and Response
  - Average rate of crisis beds \$911/day
- Community mental health
  - CRT Residentials average around \$212/day

**Graph of levels of care for context:**



Governor’s Proposed FY2024 Budget Follow up Questions

- Budget percentage increase between FY2023 to proposed FY2024 for Travel Nurse staff:

The amount requested decreased from the Departments FY2023 budget adjustment request to the proposed FY2024 budget request. Prior to the pandemic, VPCH’s utilization of travel nurses was closer to



10-12 with a cost of \$100/hour or slightly less. The cost has increased to \$200/hour with overtime at time and a half. In addition to this increased utilization and rate, DMH was approved for 12-hour shifts, which included 4 hours of overtime per two-week period and extends to the travel nurses. Travel nurse costs are expected to decrease in FY2024 due to recruitment efforts for full-time staff and reductions in travel nurse rates.

2. *Provide PATH annual report acronym.*

Project for Assistance and Transition for Homelessness

3. *Is the money currently being utilized for the DMH community investment projects?*

<b>Community Investment Funding Updates</b>	
<b>Community Provider Stabilization</b>	<b>Funding has been disseminated</b>
<b>Community Based Alternatives to Emergency Departments</b>	<b>This project is currently in the process of writing agreements and is not yet being implemented</b>
<b>Forensic Assertive Community Treatment (FACT)</b>	<b>Funding has been disseminated</b>
<b>Community Investment Housing Grants</b>	<b>3.2mil of the total 4mil allocation has been disseminated</b>
<b>First Responder Wellness Investments</b>	<b>Funding has been disseminated</b>
<b>Emergency Community Outreach – Case Managers</b>	<b>The agreements have recently been executed and funding is anticipated to be disseminated shortly</b>
<b>Cultural Liaisons</b>	<b>Funding has been disseminated</b>
<b>Mental Health Language Access Videos</b>	<b>Funding has been disseminated, one of the 3 videos is complete</b>
<b>Abenaki Cultural Training and Mental Health Supports to Abenaki Bands in VT</b>	<b>Funding has been disseminated</b>

4. *Will we receive mobile crisis RFP responses before the budget is finalized?*

A multi-disciplinary team from across Agency of Human Services is currently reviewing and scoring the proposal. The team had questions on several aspects of the proposal and sent those back to the bidder for response before scoring the proposal. The Department anticipates that scoring will be completed before the end of this month (February). However, it is important to note that the State will not be able to make an announcement until a contract has been signed, which is typically 4-8 weeks after the winning bidder has been selected.

