

# School Mental Health

January 17, 2024

Heather Bouchey, PhD, Interim Secretary  
Agency of Education

Laurel Omland, MS, NCC, Director Child, Adolescent & Family Unit  
Vermont Department of Mental Health



# SUCCESS BEYOND SIX – SCHOOL MENTAL HEALTH MEDICAID

## **What is Success Beyond Six?**

- VT Legislature authorized in 1993 to help reduce cost burden to education and state by leveraging Medicaid for services to Medicaid-enrolled students
- Success Beyond Six (SB6) is the name for the Medicaid funding mechanism for school mental health services provided through Designated Agencies in partnership with a Local Education Agency (LEA)
- Local contract between a Supervisory Union/ School District (SU/SD) or school and a Designated Agency (DA)
  - District/school determines what to purchase from DA for school mental health services
  - Contract establishes what services can be funded through SB6 Medicaid and what the district/school may purchase above and beyond SB6
- Supervisory Union/District or school provides local match to draw down Medicaid federal share through DMH/DA authority

Legislative Report: January 2020

Review of Success Beyond Six: School Mental Health Services Act 72 (2019), Section E.314.1.

# Considerations about SB6 Medicaid

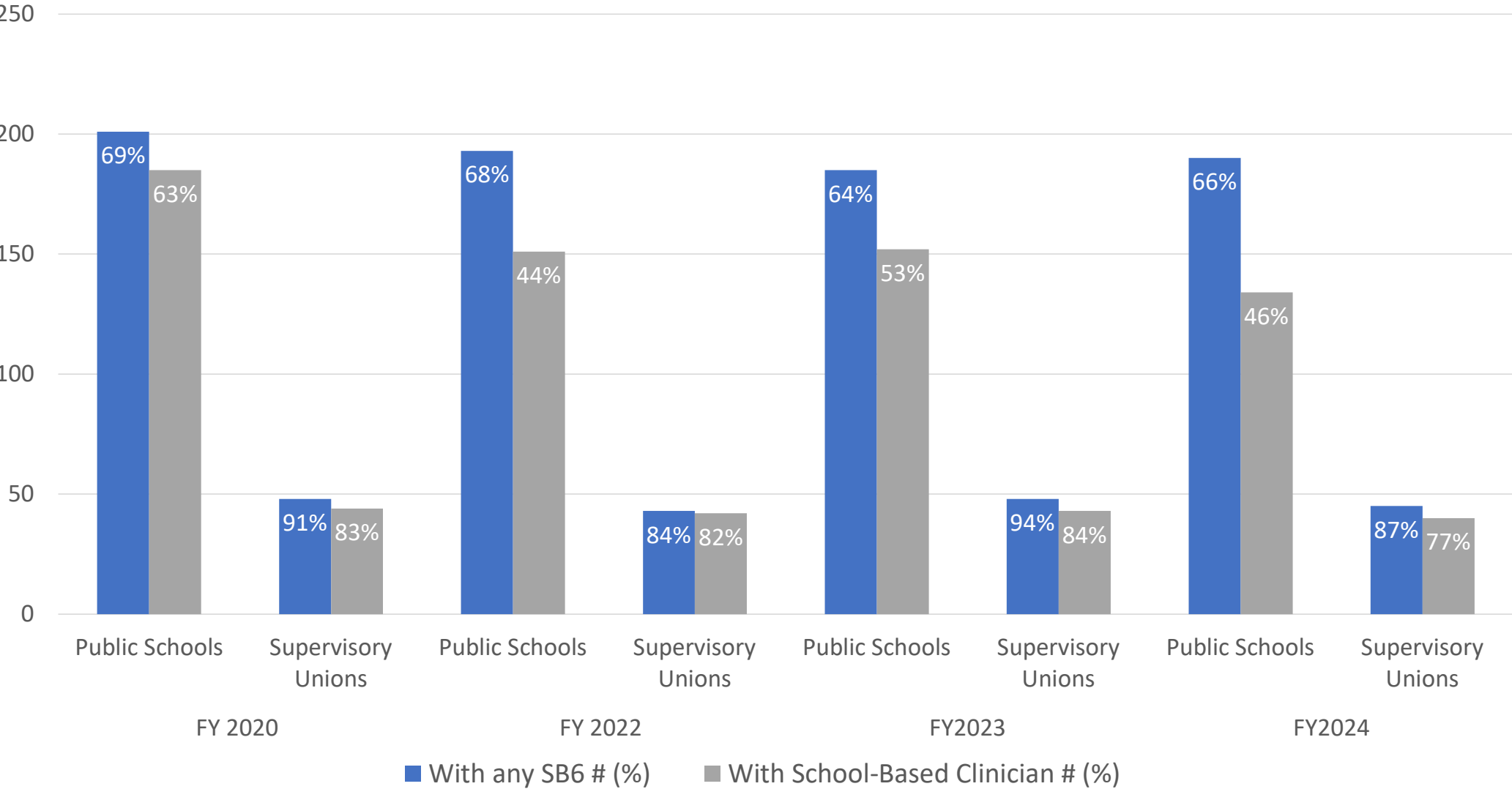
## Strengths

- Leveraging Medicaid and its flexibilities to support school MH
- Partnership of school and DA to determine need and services
- DA can work with families
- DA can participate in school team meetings for student (EST, IEP)
- Connection with broader system of care

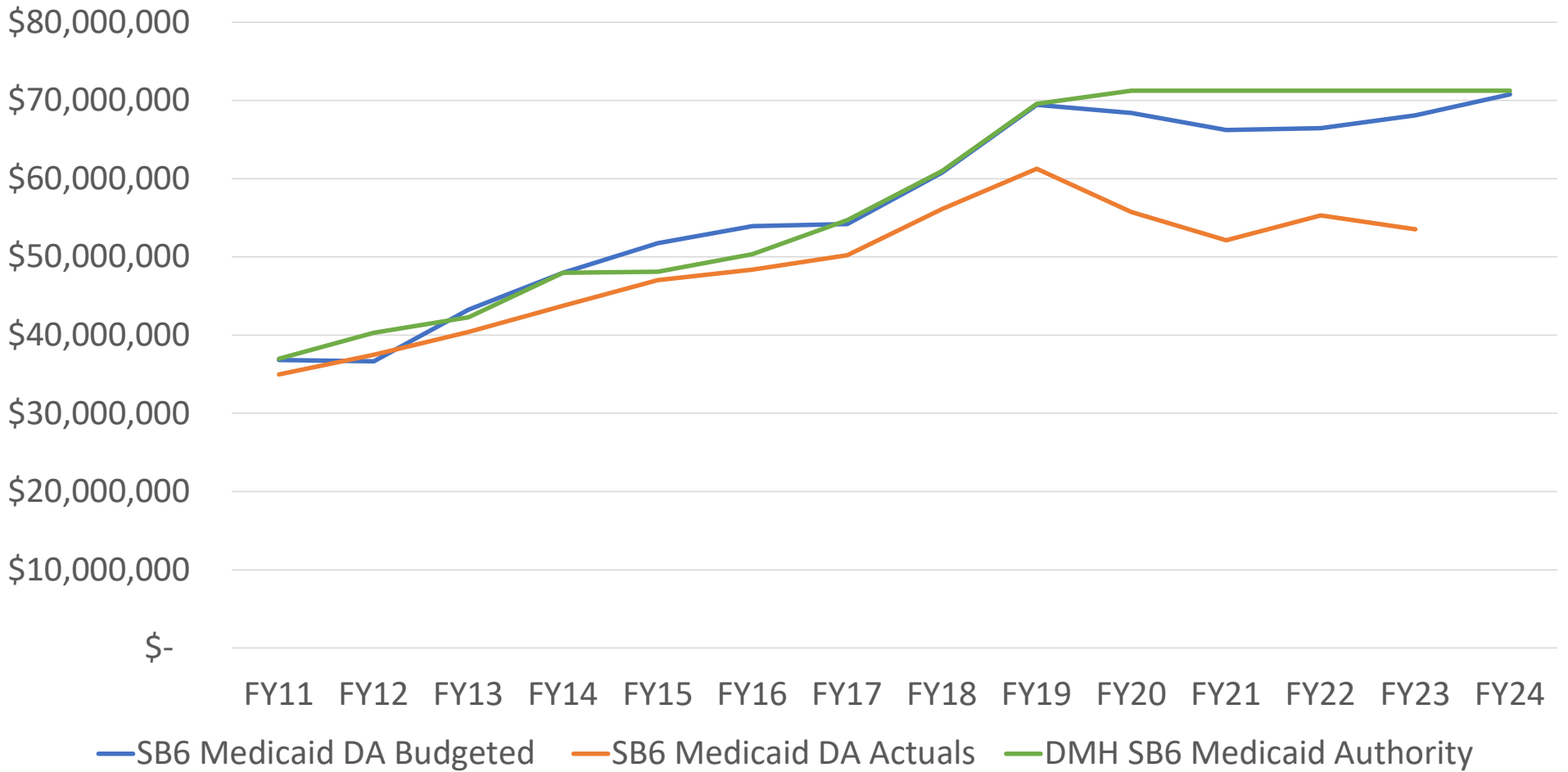
## Limitations

- Medicaid-enrolled students
- Medicaid Covered Services
  - Service threshold requirements for billing must be met; some students receive service but not at threshold level
  - Does not include:
    - Non-student specific mental health consultation (classroom, grade-level)
    - Training on MH topics
    - Intentional system-level work with MH expertise at table
- Administrative requirements of DAs
- DMH tracking of SB6 only, not other funded School MH

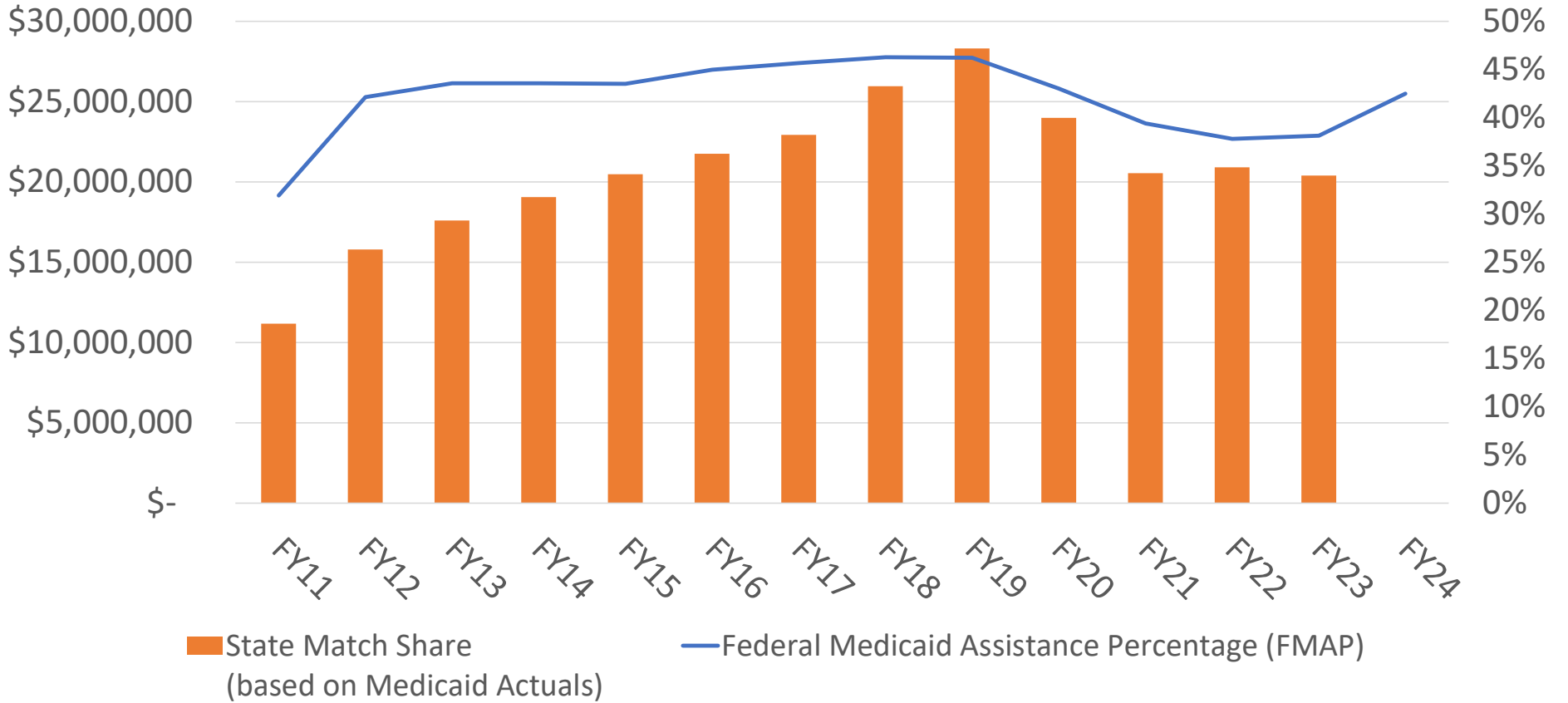
### Percent and Number of Schools and Supervisory Unions with SB6 Contracts



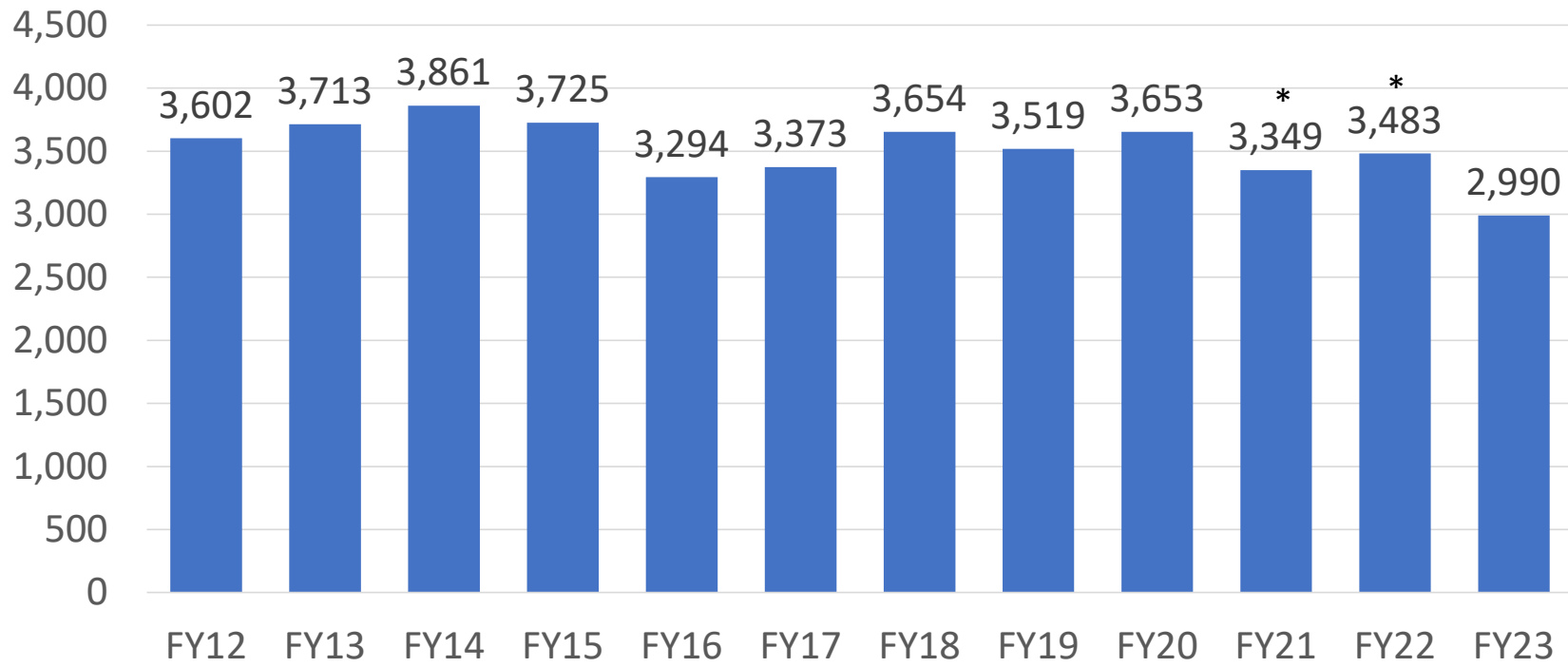
## SB6 Medicaid: Authority, Budgeted, Actuals



### State Match Share for SB6 Medicaid



## Total Number of Children Served in SB6 Medicaid School Mental Health, by Fiscal Year



\* COVID-19 impacted FY21-22 due to staff vacancies, staff & student illness, reduction in local contracts

# SB6 Monitoring

DMH has a contractual agreement with each Designated Agency for their Success Beyond Six (SB6) Medicaid program and funding, based on the local LEA/DA agreements.

## Program Monitoring

- Monitoring of SB6 services falls under the DMH Medicaid program oversight standards
  - Medicaid documentation and reporting requirements apply; [Mental Health Provider Manual](#)
  - Minimum Standards chart reviews
  - Agency reviews
- Additional SB6 practice standards, reporting requirements for covered services and claims payment
- DMH meets monthly with SB6 program directors

## Fiscal Monitoring

- Spending trend monitoring
- Monitor required Match payments
- Annual Medicaid utilization reconciliation
- Annual rate review for Concurrent Education Rehabilitation and Treatment (CERT) and SB6 case rates



# Success Beyond Six: Outcome Measurement

## How Much:

1. # of Students Served
2. # of FTEs by role and setting
3. Local contracted payment per school or district

## How Well:

1. School Satisfaction Survey
2. Annual Report

Locally tracked measures often include school attendance, in-classroom time, school disciplinary actions, etc.

## Is Anyone Better Off:

Child and Adolescent Needs and Strengths (CANS) [tool](#) data, collected 2x during school year:

1. % of eligible\* students who received two CANS in the school year  
(\*eligible = students who were in school based programming for 5 months or more this reporting year)
2. % of students who improved on an item in the Strengths domain
3. % of students who improved on a Support Intensity score
4. % of students who improved on School Behaviors

# Success Beyond Six (SB6) Services & MTSS

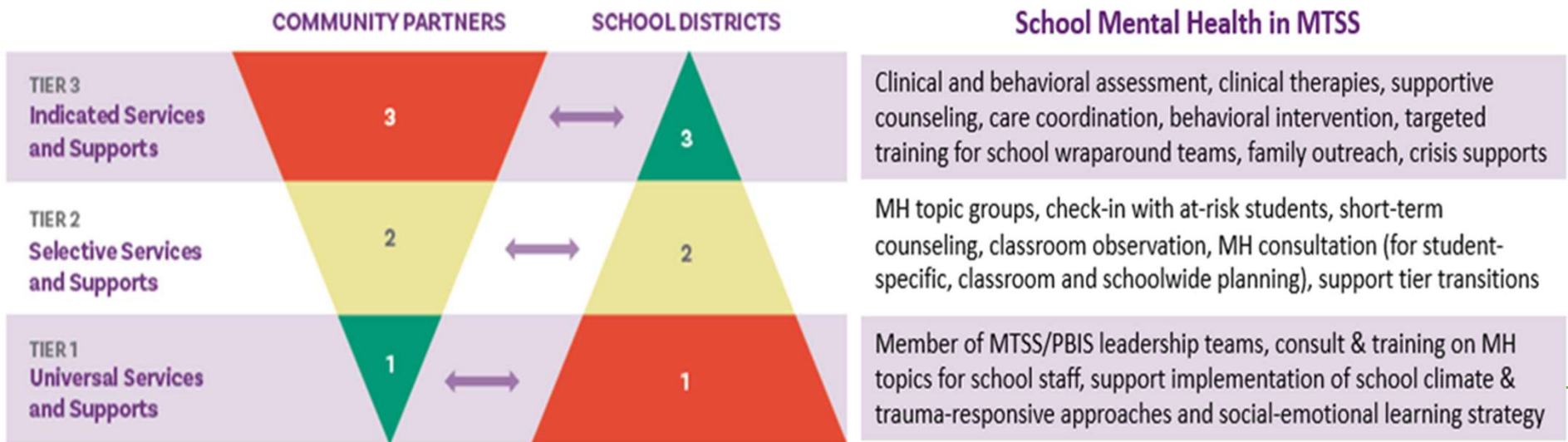
School-Based Clinical Services

School-Based Behavioral services

C.E.R.T. Therapeutic Schools

(Concurrent Education Rehabilitation and Treatment)

## Multi-Tiered Systems of Support (MTSS) and School Mental Health



Adapted from (Hoover, 2019)


# Different Structures for School Mental Health

Structure	Description	Considerations
<b>Internal</b>	Schools directly hire mental health providers	<ul style="list-style-type: none"> <li>• Schools provide administrative oversight, not clinical supervision</li> <li>• Clinician employee of school, need to develop relationships with community MH</li> <li>• LEA responsible to pursue insurance reimbursement</li> <li>• Ease of access for student</li> </ul>
<b>Integrated</b>	Local partnerships between school/district and community mental health (Designated Agencies)	<ul style="list-style-type: none"> <li>• Success Beyond Six Medicaid funding limited to Medicaid enrolled students for covered services; maximizing flexibilities under Medicaid alternative payment models. DA pursues Medicaid reimbursement.</li> <li>• LEA could contract for services beyond what is covered by SB6 using other fund source(s)</li> <li>• Designation means increased oversight by State, reporting, and documentation requirements.</li> <li>• School MH provider supported by their agency's clinical supervision structure, billing and compliance, and link with the other CYF services</li> <li>• Ease of access for student; often involves work with family</li> </ul>
<b>Co-located</b>	Schools open space for private mental health provider in building or via telehealth	<ul style="list-style-type: none"> <li>• Clinician bills insurance, only therapy is covered</li> <li>• May not be available for consultation, teaming</li> <li>• Ease of access for student</li> </ul>
<b>Coordinated</b>	Schools refer out to community provider	<ul style="list-style-type: none"> <li>• Waitlists</li> <li>• Limited number of after school hours</li> </ul>

# VT Funding for Social-Emotional Learning and Mental Health Supports in Schools/Districts

- Medicaid
  - DMH Success Beyond Six (SB6)
  - AOE School-Based Health Services
- LEA local budget/ State Ed Fund
- Title funds
- Elementary and Secondary School Emergency Relief (ESSER)
- IDEA-B 611 and 619 (Federal)
- Act 173 Census Based Grant
- Essential Early Education (EEE/ECSE)

<https://mentalhealth.vermont.gov/document/options-funding-social-emotional-learning-and-mental-health-supports-schools-districts> and on AOE site: [Options for Funding Social-Emotional Learning and Mental Health Supports for School Districts](#)

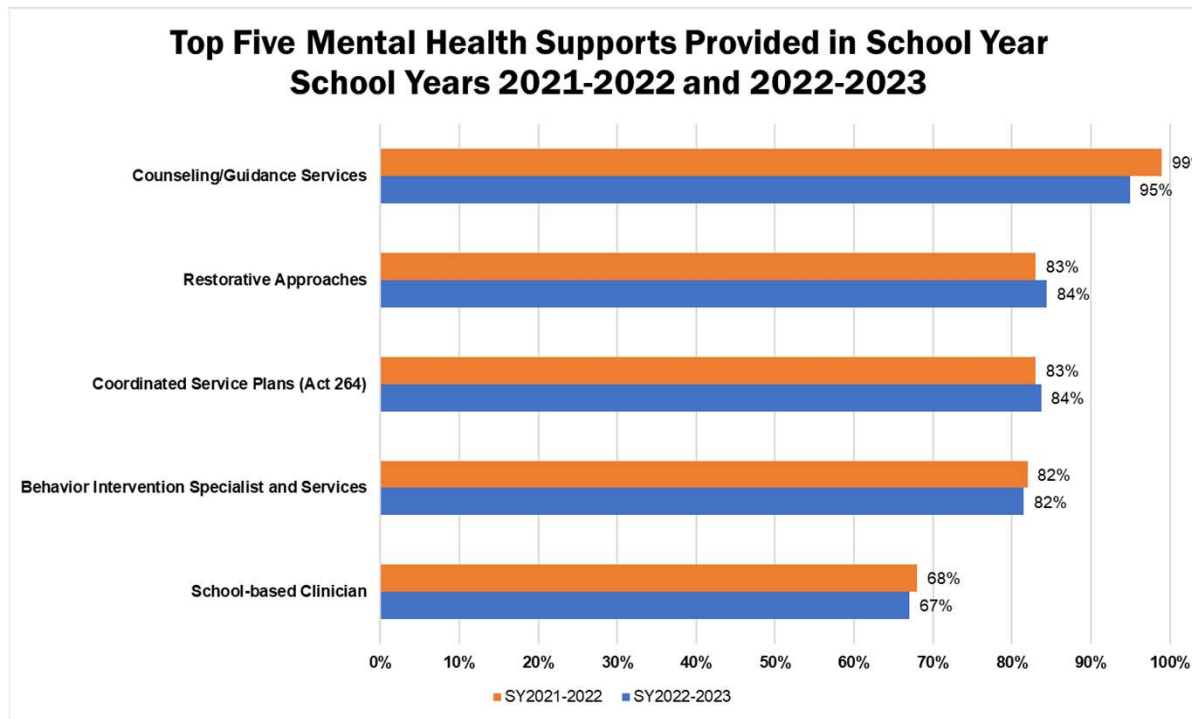
 <b>VERMONT</b>		<small>AGENCY OF EDUCATION DEPARTMENT OF MENTAL HEALTH DEPARTMENT OF VERMONT HEALTH ACCESS</small>	<small>education.vermont.gov mentalhealth.vermont.gov dvha.vermont.gov</small>
<b>Options for Funding Social-Emotional Learning and Mental Health Supports in Schools/Districts</b>			
Introduction .....	2		
How can this help you as district leader? .....	2		
Funding Options to Support Social-Emotional Learning and School Mental Health.....	2		
School Mental Health Funding Decision Visual Description .....	5		
Purpose of Funding Decision Visuals .....	5		
How the Funding Decision Visuals are Structured.....	5		
How to Use the Funding Decision Visuals.....	5		
Assumptions .....	5		
Additional Resources .....	5		
Guidance for Title Funds .....	5		
AOE School Based Health Services Medicaid & Reinvestment Funds .....	6		
Success Beyond Six School Mental Health Medicaid.....	6		
District Example: Proportionality of Funding for School Mental Health .....	9		
Table: School District Funds for SE/MH (Example).....	9		
Appendix A: Acronyms .....	11		
Appendix B: Funding Decision Visuals in List Format .....	14		
List Format: School Mental Health Funding - For Universal/Targeted .....	14		
List Format: School Mental Health Funding – Intensive/Individualized .....	15		

# **VTmtss Survey Data Mental Health and SEL Questions School Year 2022-2023**

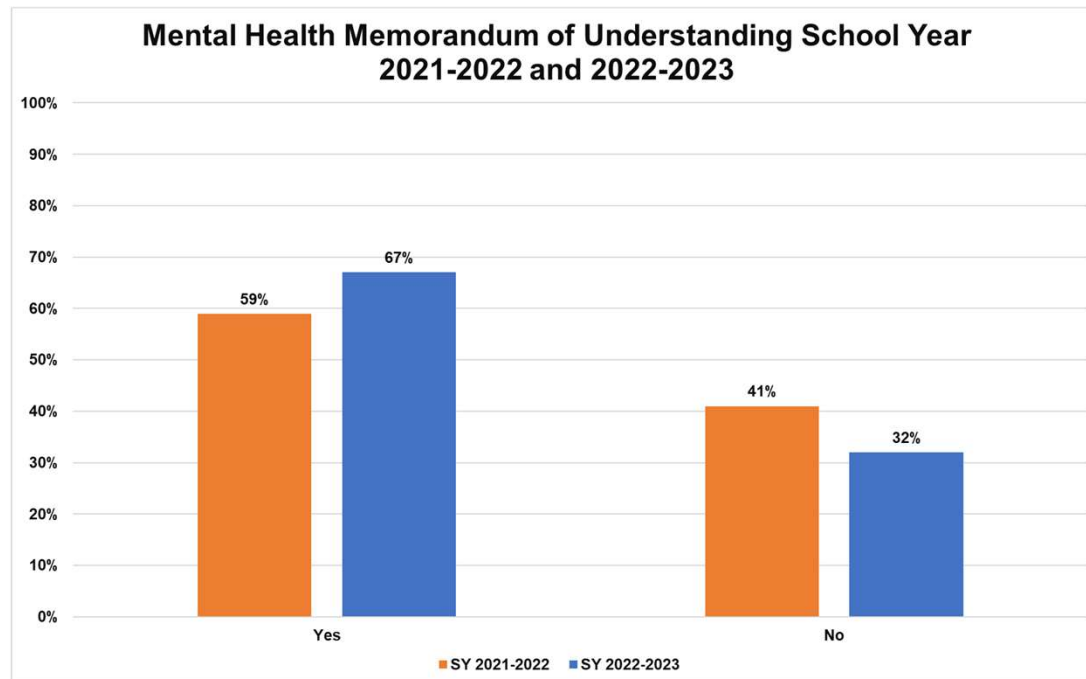
---

<https://education.vermont.gov/document/2022-2023-vermont-multi-tiered-system-supports-survey-summary>

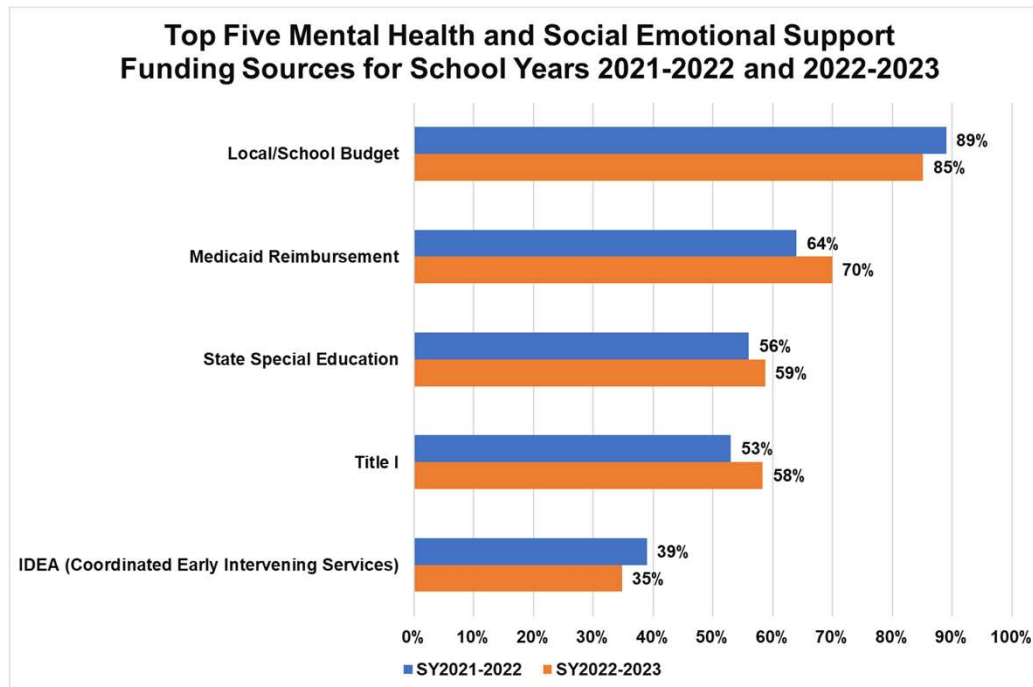
# Mental Health and Social Emotional Supports Principal Responses to Survey n=276



# Memorandum of Understanding for Local Designated Mental Health Agency Principal Responses to Survey n=276



# Mental Health and Social Emotional Support Funding Sources Principal Responses to Survey n=276





# Enhanced partnership between AOE & DMH

## Social-Emotional Wellness team

- Develop joint guidance
  - The Vermont School Mental Health Systems Toolkit  
<https://education.vermont.gov/documents/vermont-school-mental-health-systems-toolkit>
  - AOE webpage on *Social Emotional Learning (SEL) and Mental Health Well Being*:  
<https://education.vermont.gov/sel-vt>
  - [SEL And Mental Health: Making Connections with VTmtss](#)
  - [Universal Screening for Social, Emotional, and Behavioral Needs and Strengths in Vermont Schools](#)
- Oversee grants
  - Act 112, Project AWARE
- Coordinate efforts across divisions/agencies

# Enhanced partnership between AOE & DMH

## Project AWARE: Advancing Wellness and Resilience in Education

- 5-year SAMHSA federal award (2023-2028) to DMH in partnership with AOE
- Integrating mental health and wellness awareness, identification, and services within VTmtss
- 3 LEAs and their local DAs

- Goals
  - Increase awareness of mental health and suicide prevention among adults and students
  - Develop/enhance process for universal screening of student social, emotional and behavioral strengths & needs
  - Develop or update referral pathways to link students with supports and services through MTSS
  - Develop or update crisis protocols

LEA	DA
Barre Unified Union School District (BUUSD)	Washington County Mental Health (WCMH)
Caledonia County SU (CCSU)	Northeast Kingdom Human Services (NKHS)
Southwest VT Supervisory Union (SVSU)	United Counseling Services (UCS)