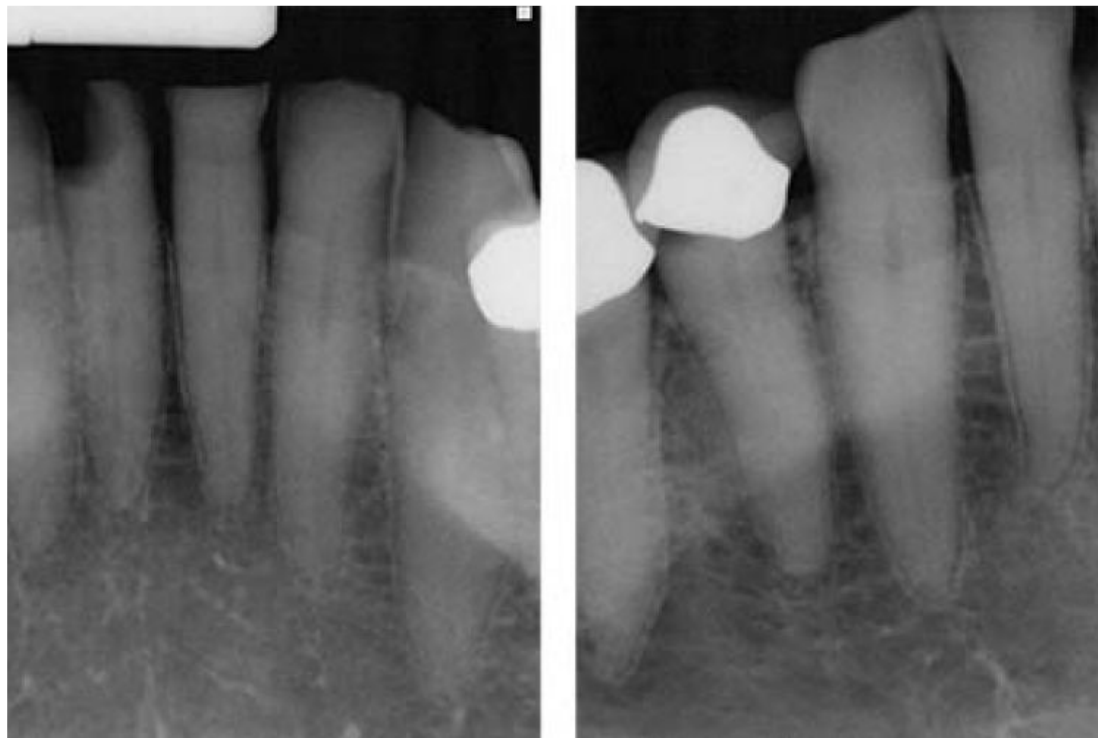


SMART (Silver Modified Atraumatic Restorative Therapy)



What is SMART

Silver **M**odified **A**traumatic **R**estorative **T**echnique (**SMART**), is a technique to halt decay and seal teeth using two products: silver diamine fluoride (SDF) and glass ionomer cement (GIC) sealant/restoration in a single appointment. It is a relatively simple procedure that can be done without using needles or drilling.

Rationale for Expansion of Care

- Poor geographic distribution of providers within the state.
- Using General Supervision, we can utilize our dental workforce more effectively needing less dental equipment to provide this simple clinical care.
- Trained dental hygienists at multiple remote sites with only one supervising dentist needed.

Dental Materials used for SMARTs

- Both Silver Diamine Fluoride and Glass Ionomer Cements are classified safe.
- Deemed as “Essential Medicines” by the World Health Organization*
 - Essential Medicines “are selected with due regard to disease prevalence and public health relevance, evidence of efficacy and safety and comparative cost-effectiveness.”
- Approved by the FDA

• <https://www.who.int/publications/i/item/WHO-MHP-HPS-EML-2021.02>

See also, “Global recognition of the benefits from glass ionomer cements and silver diamine fluoride as a ‘huge step forward for oral health’.” American Dental Assoc. news 2-15-2021

Clinical protocol

- Isolate and clean cavity with wet cotton.
- Apply Silver Diamine Fluoride
- Apply Glass Ionomer Filling Material
- There is no removal of any tooth structure. This procedure does not require any novocaine or drilling.