

# Emergency Housing Transition

House Committee on General and Housing, May 4, 2023

Miranda Gray, Deputy Commissioner

Sarah Phillips, Director, Office of Economic Opportunity

Katarina Lisaius, Senior Advisor to DCF Commissioner



# What does “homeless” mean?

## *Category 1: Literal Homelessness*

- Unsheltered (*place not meant for human habitation*)
- Staying in an emergency shelter, including domestic violence (DV) shelters
- Staying in an emergency apartment (for families)
- Staying in a host home (for unaccompanied minors)
- Staying in transitional housing for the homeless (e.g., Veterans Place in Northfield)
- Staying in a motel paid for by a community partner (e.g., DV shelter)
- In the General Assistance Emergency Housing Program – aka, receiving a “motel voucher”
- In the DCF Transitional Housing Program

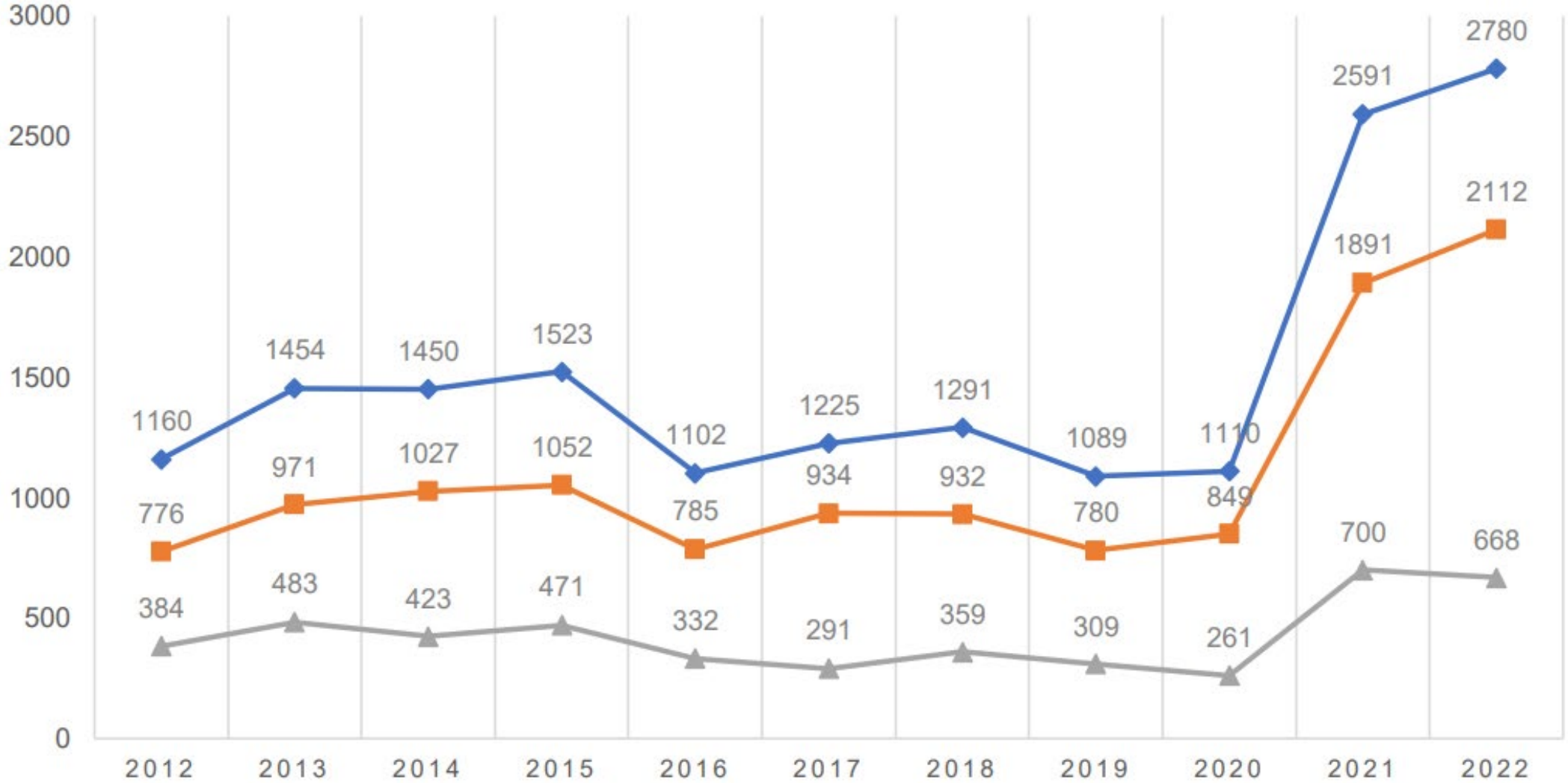
# Homelessness Data – April 2023

Program	Households
GA Emergency Housing	1822
Emergency Shelter/Emergency Apartments (including motels through Domestic Violence Shelters)	Approx 500
Unsheltered (estimate based on local unofficial counts)	At least 150

# TOTAL PERSONS EXPERIENCING HOMELESSNESS

◆ Statewide    ■ BoS CoC    ▲ CCHA CoC

\*BoS: Balance of State Continuum of Care; CCHA: Chittenden County Homeless Alliance



# Current GA Emergency Housing Eligibility

Adverse Weather Conditions until May 31, 2023

Emergency Housing Eligibility April 1 - June 30, 2023

- Fire, Flood, Natural Disaster
- Eviction or left rental due to a health code violation
- Domestic Violence
- 60 years of age or older
- In receipt of SSI or SSDI
- Family with a child up to age 18 (or 19 if in school)
- Pregnant any trimester

# GA Emergency Housing – April Data

Eligibility Category	# of Households	%
Adverse Weather Conditions	789	43%
Age 60+	82	4%
Disability	565	31%
Domestic Violence	22	1%
Families with Children	329	18%
Health Code Violations/Eviction	24	1%
Natural Disaster (Fire, Flood, Hurricane)	2	<1%
Pregnant	9	<1%
<b>Grand Total</b>	<b>1822</b>	

# Proposed GA Emergency Housing Eligibility SFY24

## Catastrophic (84 day limit)

- Fire, Flood, Natural Disaster
- Death of a spouse or minor child
- Court ordered or Constructive eviction
- Domestic Violence

## Vulnerable (28 day limit)

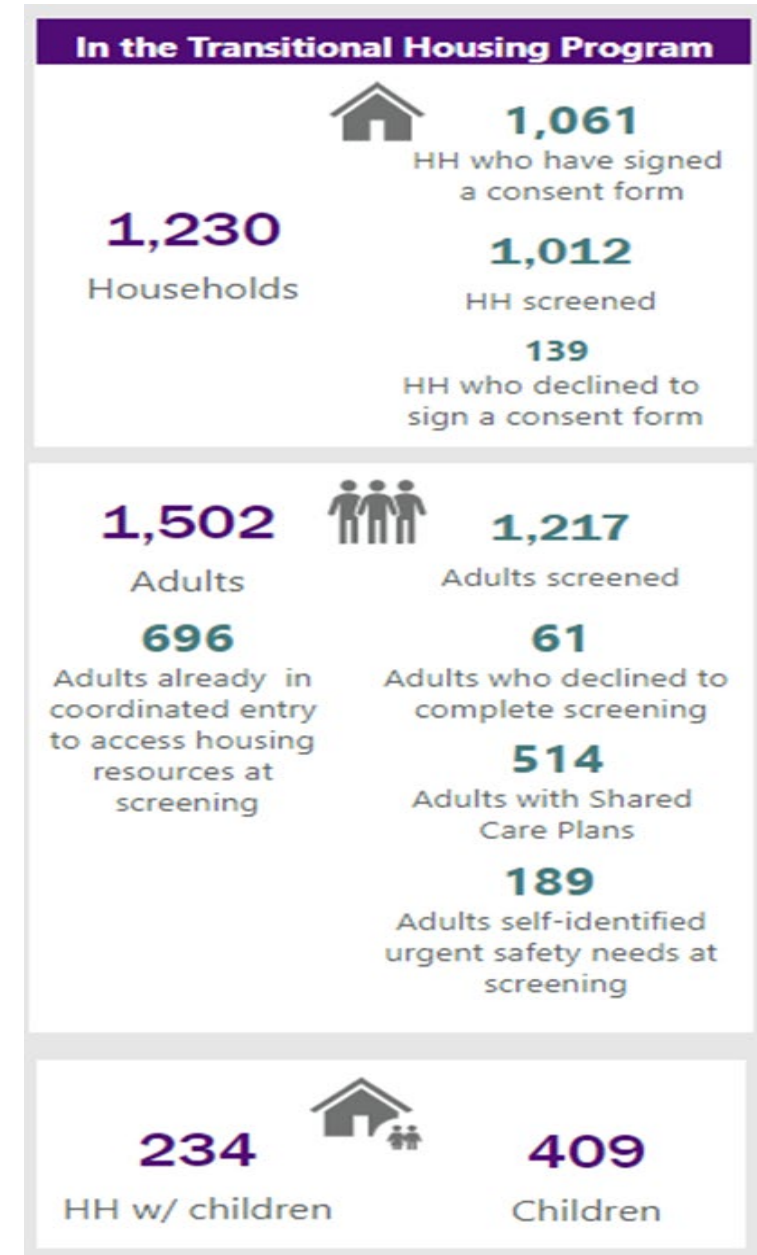
- 65 years of age or older
- In receipt of SSI or SSDI
- Family with a child 6 years of age or younger
- In the third trimester of pregnancy

County	# Current Households Not Eligible on 6/01/23	# Current Households Not Eligible 7/01/23
Addison	8	10
Bennington	65	112
Caledonia	27	51
Chittenden	204	177
Franklin	49	33
Lamoille	17	28
Orange	12	17
Orleans	3	18
Rutland	186	305
Washington	80	128
Windham	79	137
Windsor	36	40
<b>Grand Total</b>	<b>766</b>	<b>1056</b>

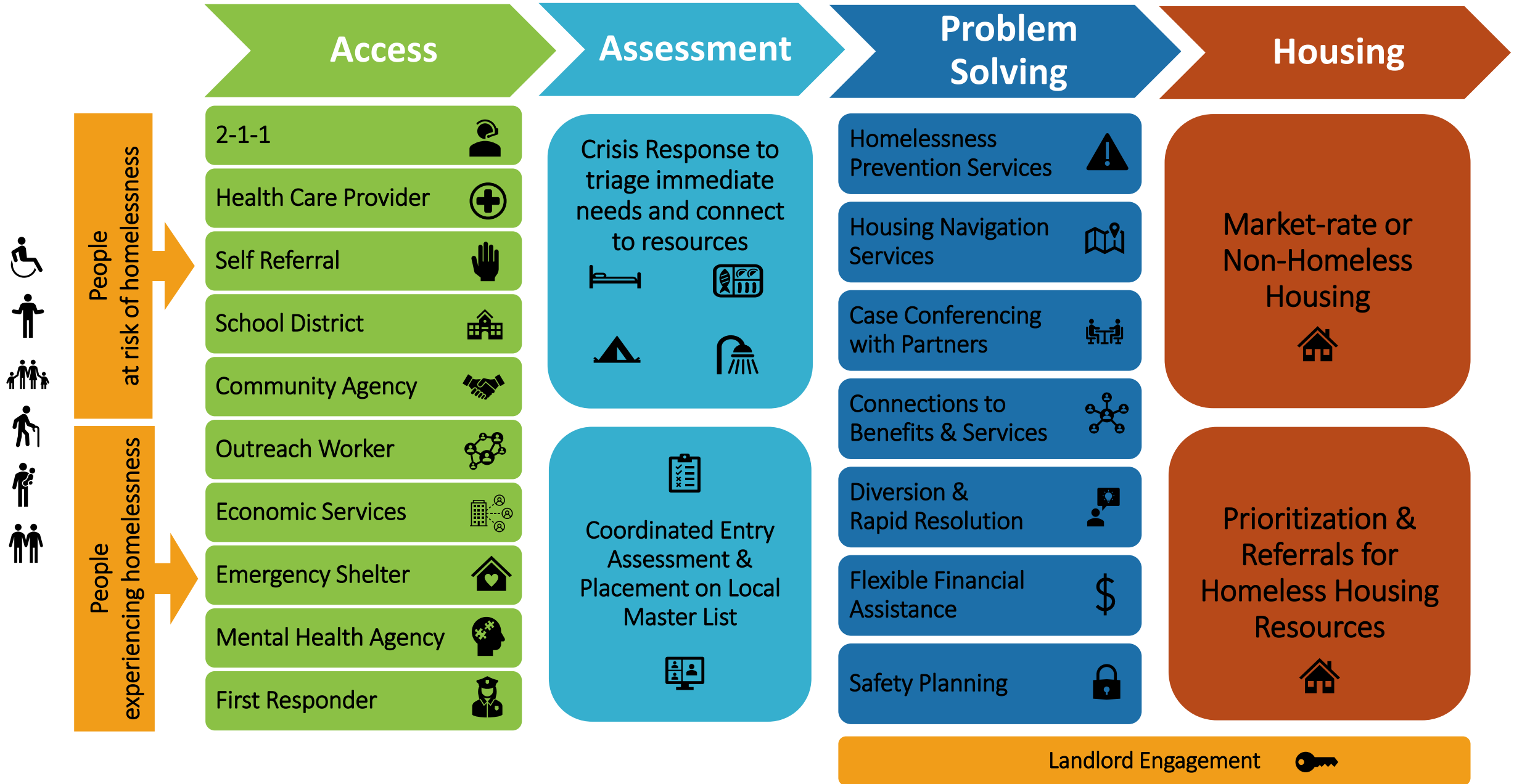


# Transitional Housing Program Care Coordination Teams

- 1,140 adults have been screen statewide
- 676 adults have a shared care plan
- 427 households have exited



# Coordinated Entry – Connecting People in Housing Crisis to Housing Supports & Resources



# Coordinated Entry – Connecting People in Housing Crisis to Housing Supports & Resources



People  
at risk of  
homelessness

Without resources or networks to prevent homelessness and:  
Renting but facing imminent eviction  
Staying with family or friends due to economic hardship  
Overcrowded  
Exiting an institution (hospital, corrections, *etc*) with no identified housing

People  
experiencing  
homelessness

Staying in emergency shelter (incl Domestic Violence Shelter)  
Staying in motel/hotel paid for by DCF or by a charitable organization  
Unsheltered (a place not meant for people to live): car, park, abandoned building, *etc*

# Coordinated Entry – Connecting People in Housing Crisis to Housing Supports & Resources

## Access

2-1-1



Health Care Provider



Self Referral



School District



Community Agency



Outreach Worker



Economic Services



Emergency Shelter



Mental Health Agency



First Responder



These agencies, and others, conduct the Coordinated Entry Assessment or refer to the [Coordinated Entry Lead Agency in the area](#) to help people connect to housing help

# Assessment

## Crisis Response



Triage immediate needs, and connect to:

- Emergency housing/shelter
- Domestic/sexual violence shelter or services
- Youth services
- Mental Health crisis services
- Detox/SUD crisis services
- Food, clothing, camping supplies, etc

Coordinated Entry - uniform assessment & screening tool:

- demographics for all household members
- service needs/use of other systems
- housing barriers and goals
- housing history
- screens for eligibility to various programs

Once assessed, households are placed on the local community-wide list through HMIS or manually

Coordinated Entry  
Assessment &  
Placement on  
Local Master List



# Problem Solving

Homelessness  
Prevention Services



Conflict resolution, landlord-tenant mediation, eviction prevention services

Housing Navigation  
Services



Develop a housing stability plan, address housing barriers (*e.g.*, ID, credit, transportation, criminal record, *etc.*), housing search assistance (incl. applications), document chronic homeless status, *etc.*

Case Conferencing  
with Partners



Weekly or bi-weekly case conferencing or team-based care for more complex cases: Local Coordinated Entry/Housing Review Team, Veterans Committee

Connections to  
Benefits & Services



Referrals & support applying to public benefits (*e.g.*, 3SquaresVT, Medicaid, Reach Up, *etc.*), Homeless Education Liaisons, employment services (*e.g.*, VDOL, Hireability), health care (*e.g.*, free clinics, VCCI, SUD treatment/recovery, mental health services), childcare and parenting support (*e.g.* HeadStart, PCC, *etc.*), legal services, *etc.*

Diversion &  
Rapid Resolution



Client-centered problem solving & short-term options for safe housing outside of shelter

Flexible Financial  
Assistance



Assistance with rental arrears, security deposits, moving costs, transportation, fees, IDs, *etc.*

Safety Planning



Support for survivor-led planning to reduce the risk of harm in the future

# Housing

## Market-rate & Non-Homeless Housing

- [Public Housing Authorities](#) – [Family Unification Vouchers](#), Mainstream Vouchers, Section 8/Housing Choice Vouchers, Public Housing
- Private landlord, no subsidy
- Family or Friends
- Recovery Housing
- [DOC Re-entry Housing](#)
- [Affordable Housing](#)
- [Long-Term Care](#) & Supports for People who need nursing-home level of care
- DMH Housing Supports
- Reach Up Housing Supports
- [Emergency Rental Assistance Program](#)

## Prioritization & Referrals for Homeless Housing

- Rapid Re-housing – Up to 24 months of rental assistance with individualized services
  - [HOME Family Voucher](#)
  - Vermont Rental Subsidy
  - CoC Rapid Re-housing Voucher
- Supportive Housing – ongoing rental assistance & services for those with complex service needs
  - Specific projects, e.g., Beacon apartments, Great River Terrace
  - CoC Permanent Supportive Housing (aka Shelter + Care), A Way Home
- Housing Designated for People Exiting Homelessness
  - Homeless Units through by [Vermont Housing Improvement Program](#)
  - Homeless Units developed with [Vermont Housing Conservation Board](#) funds
  - PHA units or vouchers with a homeless preference

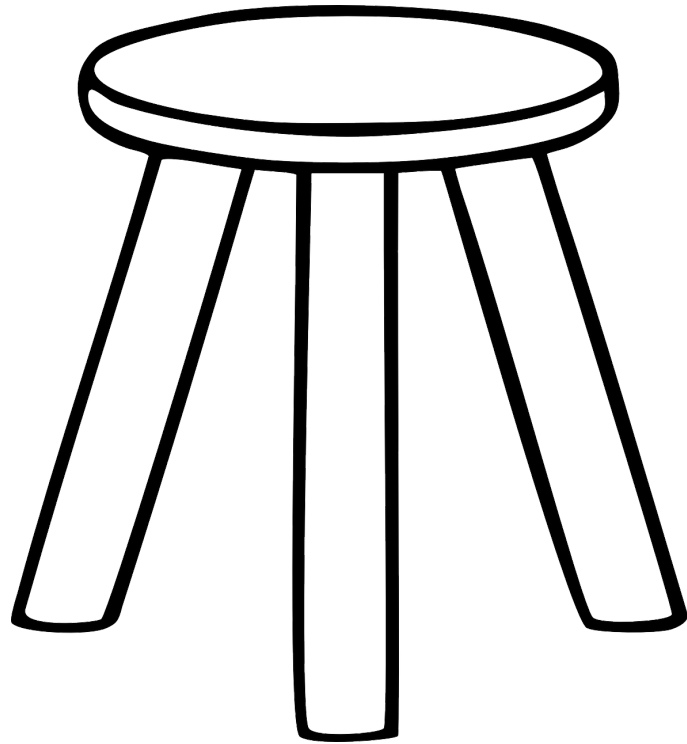
## Landlord Engagement



- Landlord Liaisons
- Landlord Relief Program
- Landlord Outreach Events



# “3 legs of the Stool” to Solve Homelessness



1. **A Unit**
2. **Rental assistance** to fill the affordability gap
3. **Supportive services** tailored to help people get and keep housing – connections to employment and health services

# Types of Housing Interventions

## Homelessness Prevention

Strategies that prevent homelessness for people seeking shelter by helping them to stabilize/preserve existing housing or identify immediate alternative housing, and, if necessary, connect them with services and financial assistance

## Emergency Shelter/Housing

By design, intended to be temporary and help guests exit to permanent housing as quickly as possible. Variety of forms: seasonal, year-round semi/non-congregate, motel vouchers, DV shelters, emergency apartments, host homes for youth, etc.

## Rapid Re-housing

Intervention that rapidly connects families and individuals experiencing homelessness to permanent housing through a tailored package of assistance that includes time-limited rental assistance and targeted supportive services

## Permanent Supportive Housing

Evidence-based housing intervention that combines long-term affordable housing assistance with wrap-around supportive services for people with complex service needs, as well as people with long-term disabilities

## Affordable Housing

Housing for which the occupant(s) is/are paying now more than 30 percent of their income for gross housing costs, including utilities

# COVID-era Investments to Address Homelessness

Supplemental Funding for Shelters (CRF, GF) for COVID related needs, for expansion of hours/staffing, etc.

Capital Funds for Shelter Improvement, Expansion (CRF, ARPA, GF)

Capital Funds for New Permanent Housing, some dedicated to re-house homeless (CRF, ARPA, GF, CDBG-CV)

Expansion of GA Emergency Housing to provide non-congregate shelter (FEMA)

Temporary Transitional Housing Program to provide stability to households continuing in motels (ERAP)

Expansion of Motel-based Services, including Housing Navigation Services (CRF, FEMA, ERAP, GF)

Rental & Utility Assistance/Arrears for low-income Vermonters (CRF, ERAP)

Expansion of Family Supportive Housing (Medicaid, GF)

Court-based eviction prevention (ERAP)

Expanded housing support services (navigation, application, retention, legal services) (ERAP)

Rehab offline private-market units, designated to re-house homeless (CRF, ARPA)

Health and Safety Repairs support for landlords (ERAP)

Flexible financial assistance for households at-risk/homeless (CRF, GF)

One-time payments to support transition out of motels (CRF)

Rapid Re-housing rental assistance and services for households who are homeless (ESG-CV, CRF)

# More Recently...

## *Expanded Housing Stability Services*

*(\$15.2M in ERA, SFY 22 - 24)*



- Landlord Liaisons
- Landlord-Tenant Mediation and Eviction Prevention Legal Services
- Motel-based Housing Navigation Services
- Housing Retention & Prevention Services
- Includes support for refugee resettlement organizations

## *Homeless Prevention:*

- \$500k added to the Housing Opportunity Grant Program to support rental arrears for those at risk of homelessness
- Temporary expansion of the Vermont Rental Subsidy program to maintain housing assistance for Reach Up families (\$1.5M)

## *HOME Family Housing Voucher Project*

*(\$3M one-time GF, SFY 23 BAA)*

- Providing 250 families experiencing homelessness a temporary rental assistance and a bridge to a permanent housing voucher – *2 families already leased and 4 in process!*



## *Landlord Relief Program*

*(\$5M one-time GF, SFY 22 BAA)*

- Fund administered by VSHA
- Statewide rental risk mitigation fund providing an incentive and added to security to landlords who agree to house Vermonters receiving rental assistance or exiting homelessness
- Vacancy loss, holding costs, qualifying damages, etc.



## *Permanent Supportive Housing*

- Approved pilot under the Medicaid Waiver; Technical Assistance contractor hired to support development with readiness to launch in late SFY24
- Partnered with VCEH on [Plan for Serving Individuals & Families Experiencing Homelessness with Severe Service Needs](#) - received [HUD Special funding](#) to address unsheltered homelessness - \$2.1m HUD CoC

## *Homeless Health Care Capacity Building*

- VDH funding to 9 communities to build capacity to enhance homeless health care access and outcomes
- Homeless Health Care Summit
- Hospital-Housing Partnerships Meeting
- Report coming in June from [National Health Care for the Homeless Council](#)

## *AHS Care Coordination Resource Teams*

### *(One-time GF SFY23 BAA)*

- AHS Staff conducting outreach, screening and team-based support



## *Emergency Shelter Preservation & Expansion*

- Replaced, expanded and created new projects: 525 HH capacity (32 seasonal)
- Funding
  - SFY24 recommend: \$3.75m GF base increase for expanded emergency shelters
  - SFY19 \$7.2M → SFY23 \$14.8M base funding for [Housing Opportunity Grant Program](#)
  - Significant new investments in wages and shelter projects
  - ~55% supports emergency shelter projects
- S.100: Address zoning & permitting barriers to emergency shelters
- Launched Emergency Shelter Learning Collaborative
- Shelter Safety Workgroup

# Funding Plans

Link to [DCF \\$15M General Fund Plan](#)

Link to [ERAP Funding \(Approved by JFC\)](#)

[Link to Fall 2022 Community Engagement Summary](#)

# Housing Presentations

Link to [DCF Joint Committee Emergency Housing Presentation](#)

Link to [VHCB Legislative Housing Presentation](#)

Link to [DCF Homelessness Awareness Day Presentation](#)