

# Vermont Land Trust



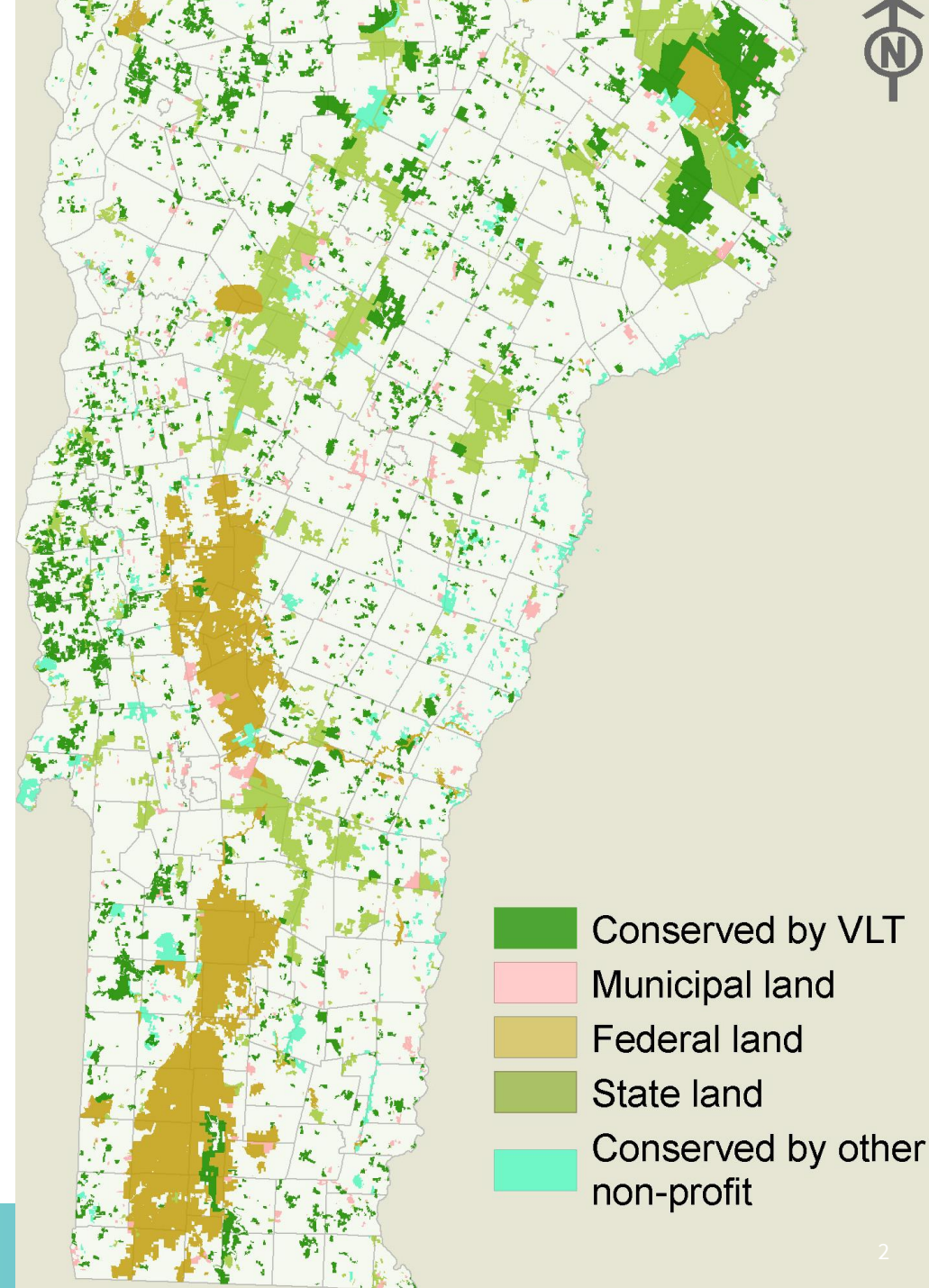
UNITING LAND AND LIVES

Helping people  
Protect  
Care for  
Connect with  
the land we love



# About us

- Founded in 1977
- Conserved 11% Vermont, over 630,000 acres
- Focus on farms, forests, community lands
- Steward 2,300+ easements
- 3,500 members
- Funds come from VHCB/state, federal, foundations, individuals
- 45 employees statewide







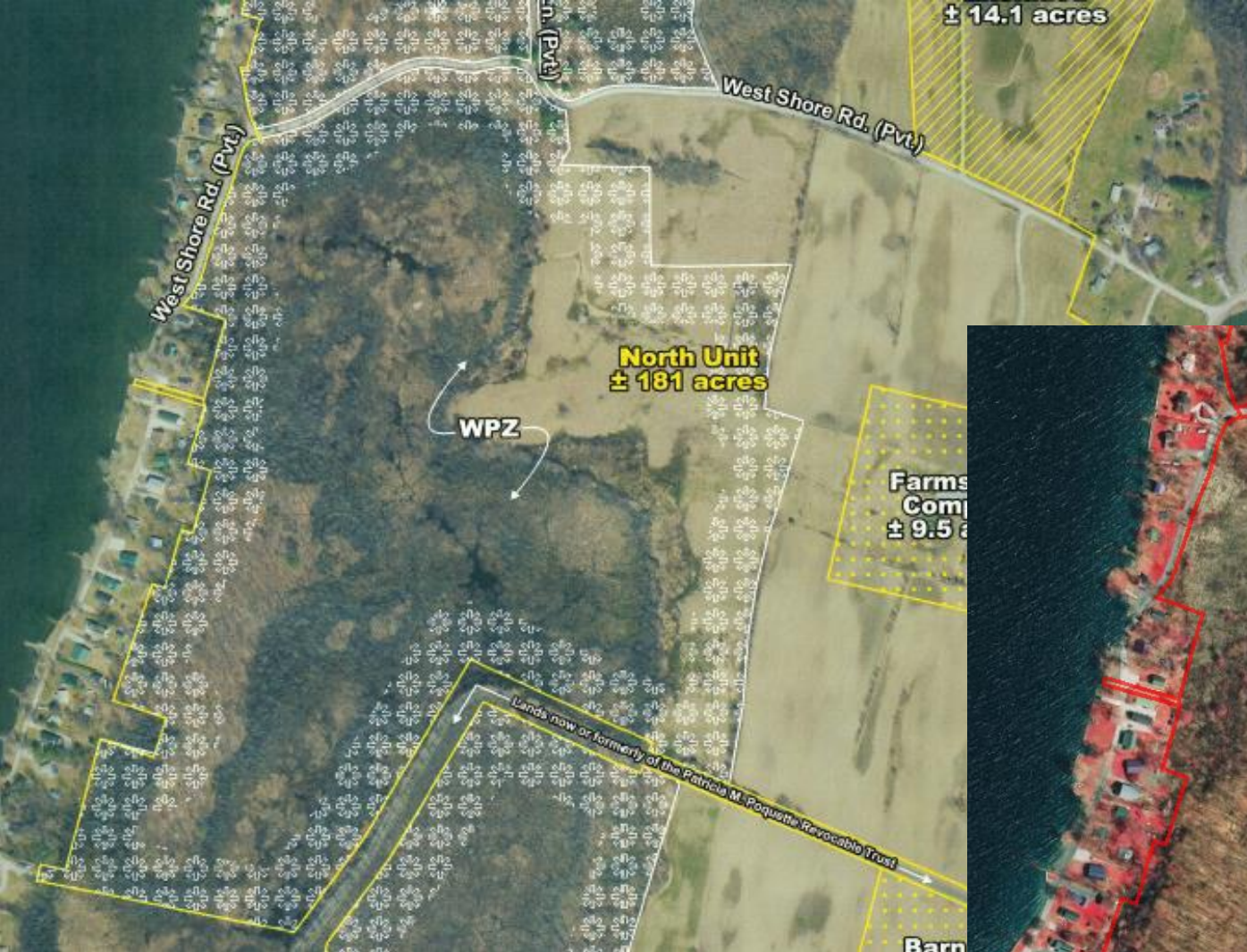
Button Farm, Colchester

# Ecology & Restoration

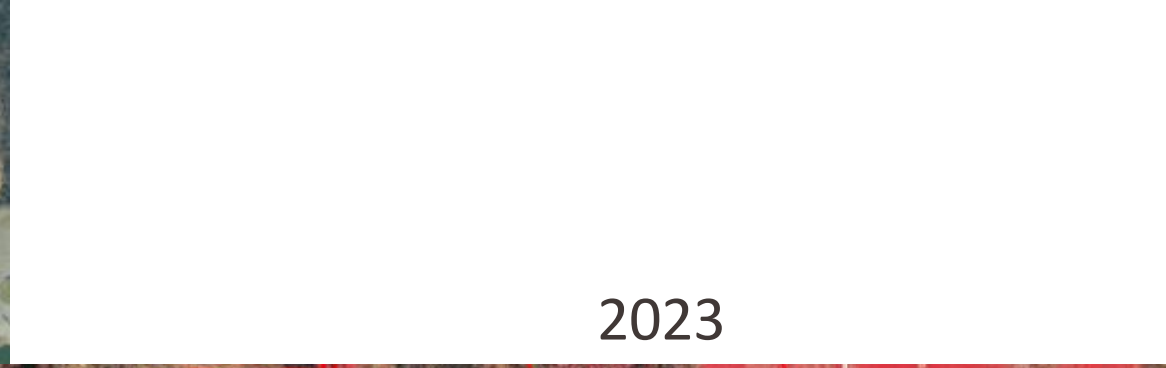
Since 1977, VLT has:

- Protected 62,900+ acres of wetlands and uncommon upland natural communities
- Conserved land along 3400 miles of rivers, streams, lakes & ponds
- Restored wetlands and streams, improved stream crossings, planted tens of thousands of trees, removed dams and berms





2019



2023

Josh Boissoneault Farm, St. Albans





Oct 31, 2017 10:38:50 AM



Josh Boissoneault Farm, St. Albans





Josh Boissoneault Farm, St. Albans



1954







• JAN 09



1962

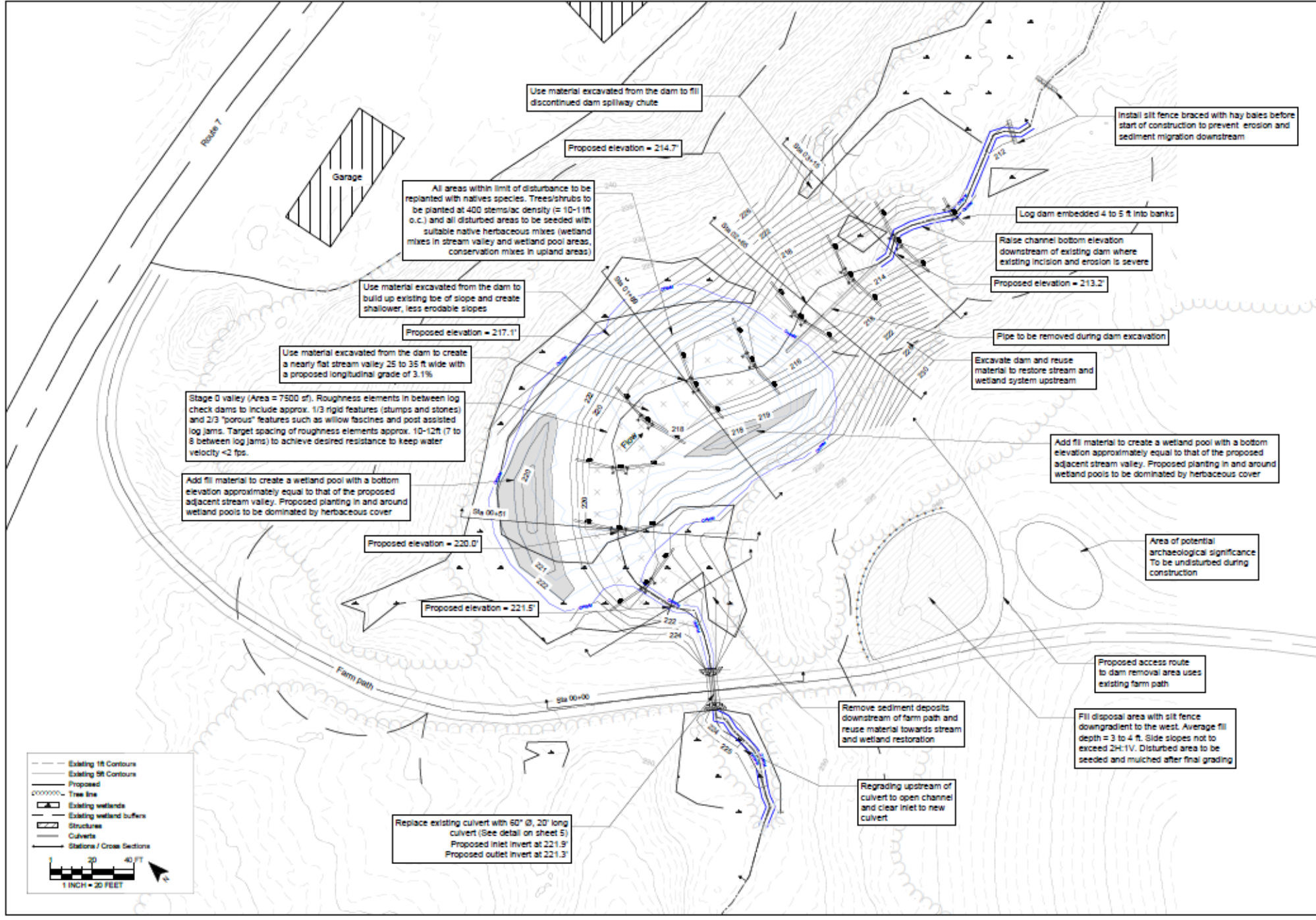


**Fall 2021**



Photo:  
FluidState Consulting





Note:  
 - Elevation datum NAVD 83  
 - Elevation based on field measurements (Total Station Nikon NIP-322 and Trimble) and LEAP DEM from VCGI

**SITE PLAN - PROPOSED CONDITIONS**  
**BUTTON DAM REMOVAL AND**  
**STREAM/WETLAND RESTORATION**  
 COLCHESTER, VT

DESIGN	RFS	DATE	6/13/2022
CHECKED	EPF	DATE	6/13/2022
PROJECT NO.	21008		
SHEET NO.	2 OF 7		
SHEET NAME	SP-2		





















Beaver Coexistence  
Brewster Uplands, Cambridge



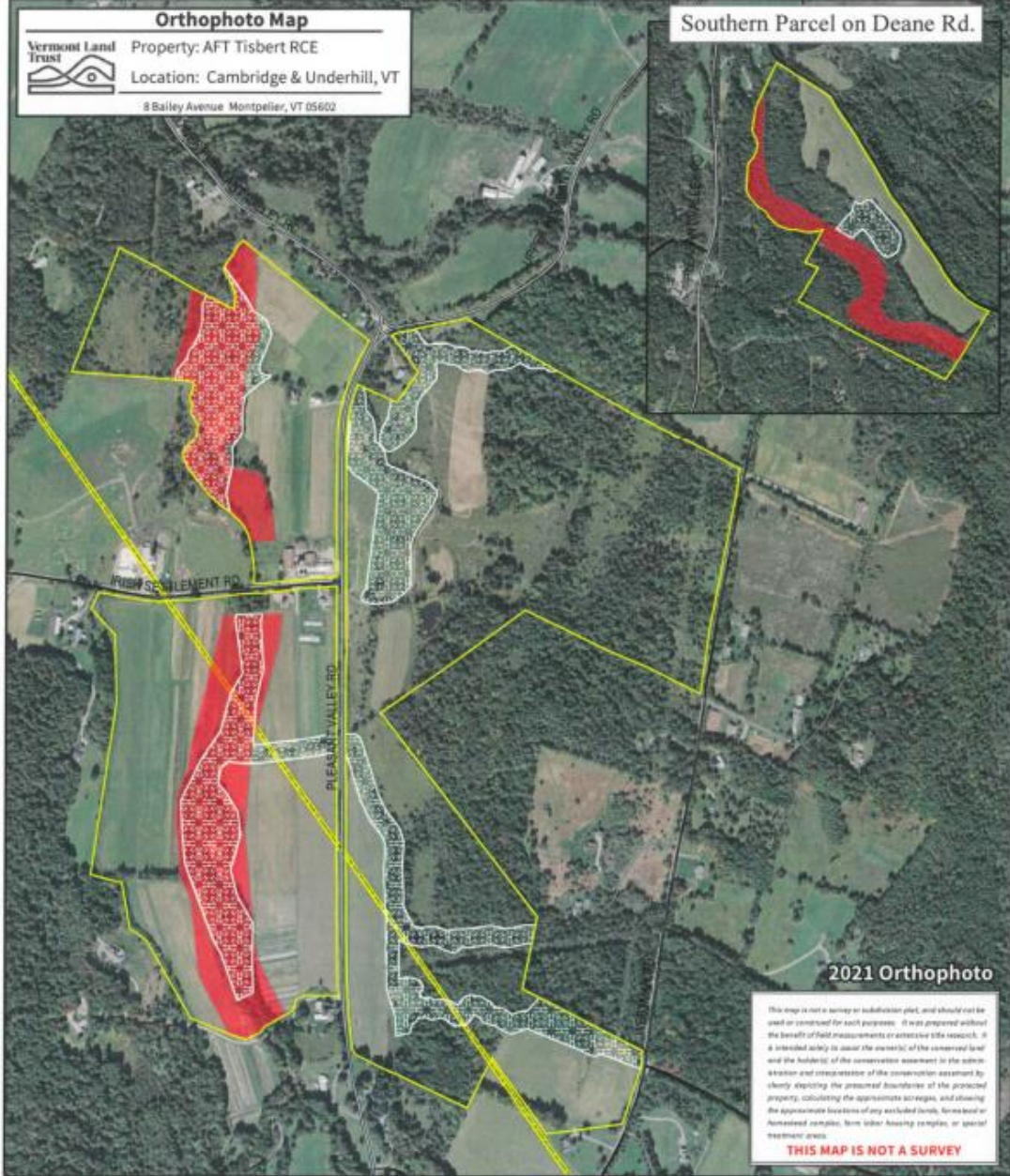


West Farm, Brewster Uplands, Cambridge



**Orthophoto Map**  
 Vermont Land Trust  
 Property: AFT Tisbert RCE  
 Location: Cambridge & Underhill, VT  
 8 Bailey Avenue Montpelier, VT 05602

Southern Parcel on Deane Rd.



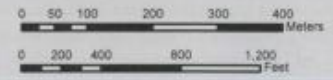
**2021 Orthophoto**

This map is not a survey or subdivision plat, and should not be used or construed for such purposes. It was prepared without the benefit of field measurements or extensive site research, it is intended solely to assist the owners of the conserved land and the holder(s) of the conservation easement in the administration and interpretation of the conservation easement by clearly depicting the presumed boundaries of the protected property, calculating the approximate acreage, and showing the approximate locations of any excluded lands, farmstead or homestead complex, farm labor housing complex, or special resource areas.

**THIS MAP IS NOT A SURVEY**

- Previously Protected Property
- Wetland Protection Zone (WPZ)
- River Corridor

Scale: 1:8,000







Valley Dream Farm, Cambridge  
River Corridor Easement & Wetland Restoration





Valley Dream Farm, Cambridge





Seymour River, Valley Dream Farm, Cambridge





Seymour River, Valley Dream Farm, Cambridge





Questions? [allaire@vlt.org](mailto:allaire@vlt.org)

4/10/2024