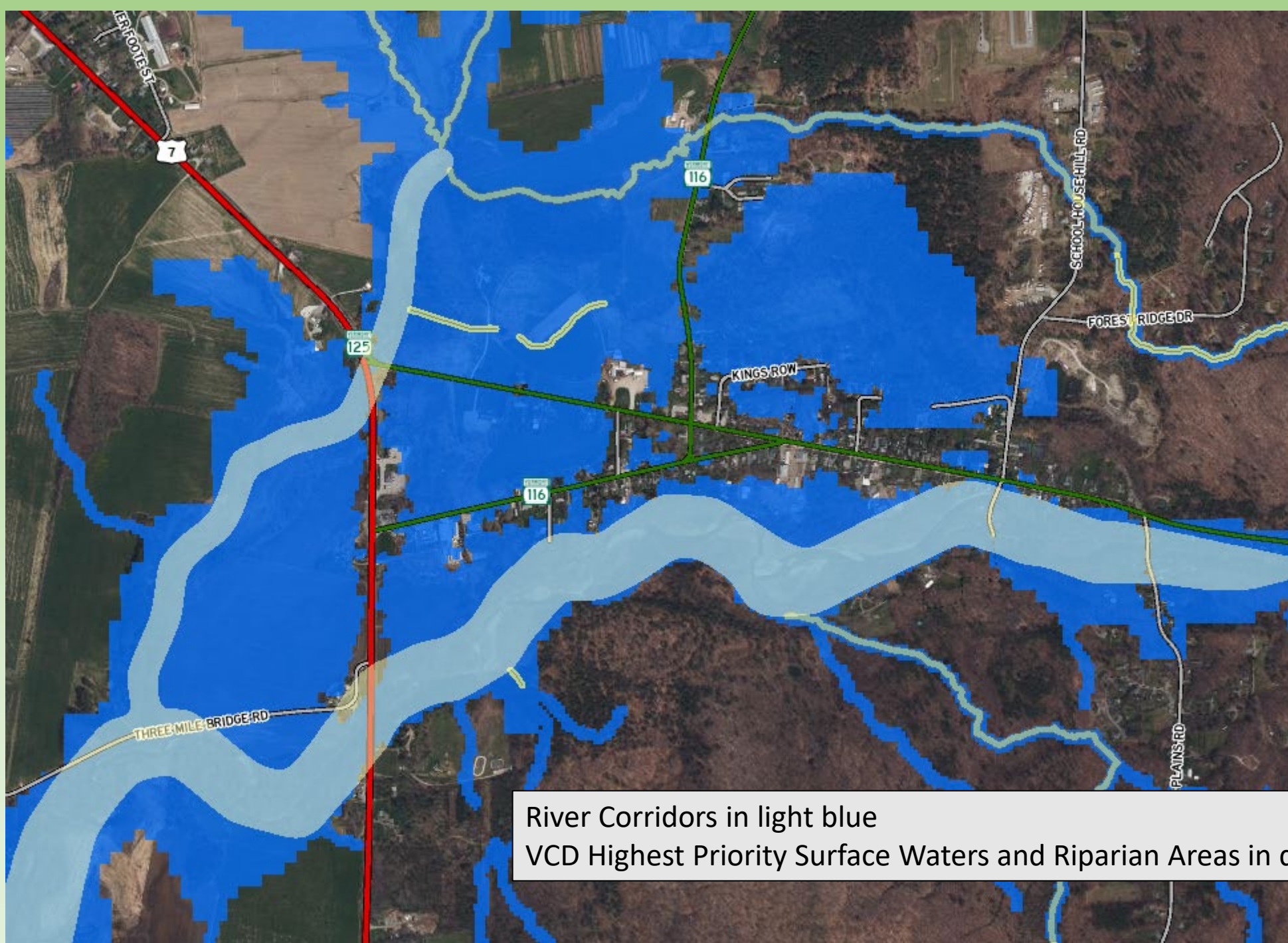


Robert Zaino
Vermont Fish and Wildlife Department
Presentation to House Committee on Environment and Energy
February 20, 2024






River Corridors in light blue
VCD Highest Priority Surface Waters and Riparian Areas in dark blue

Slope

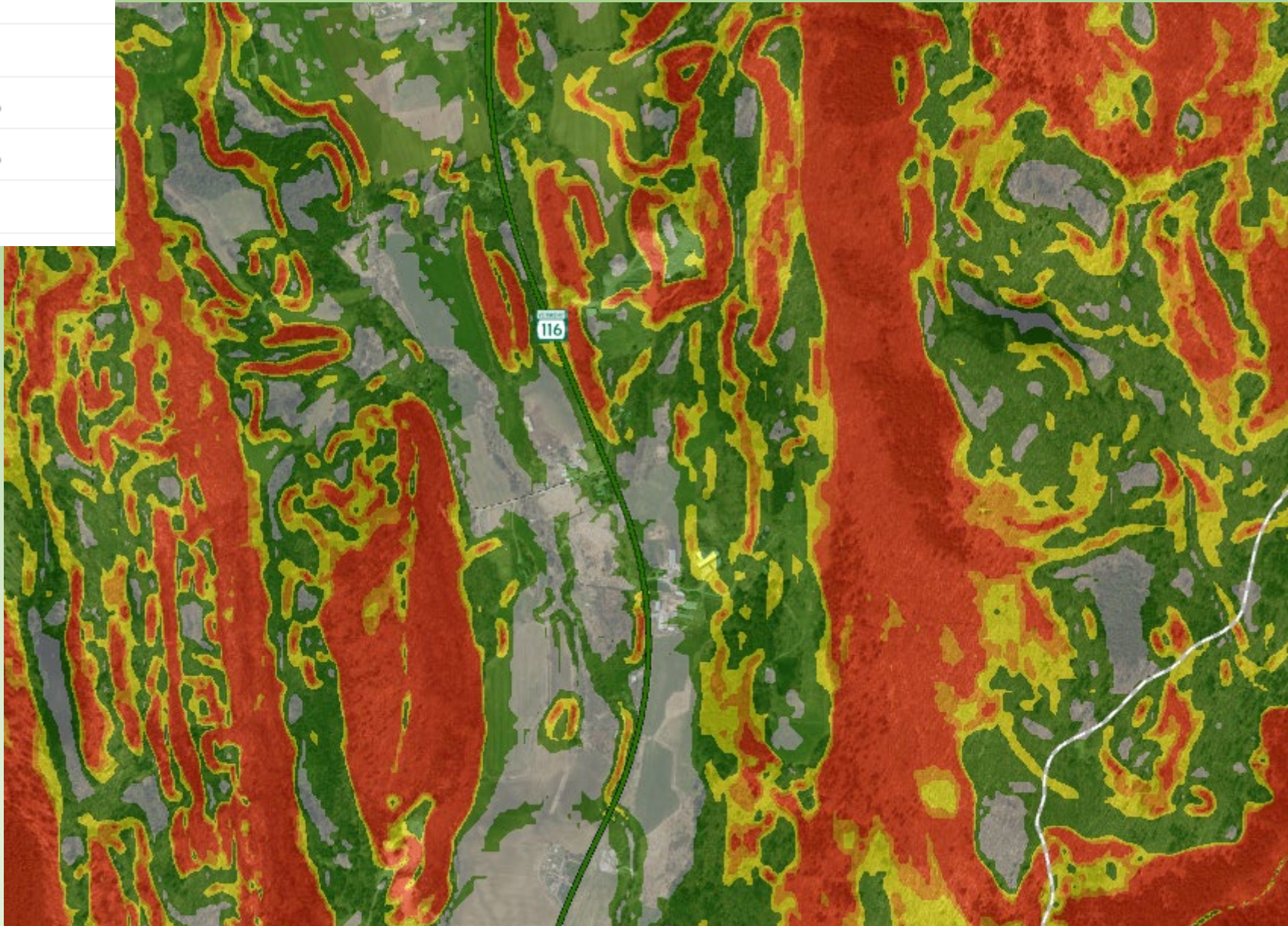
 <5%

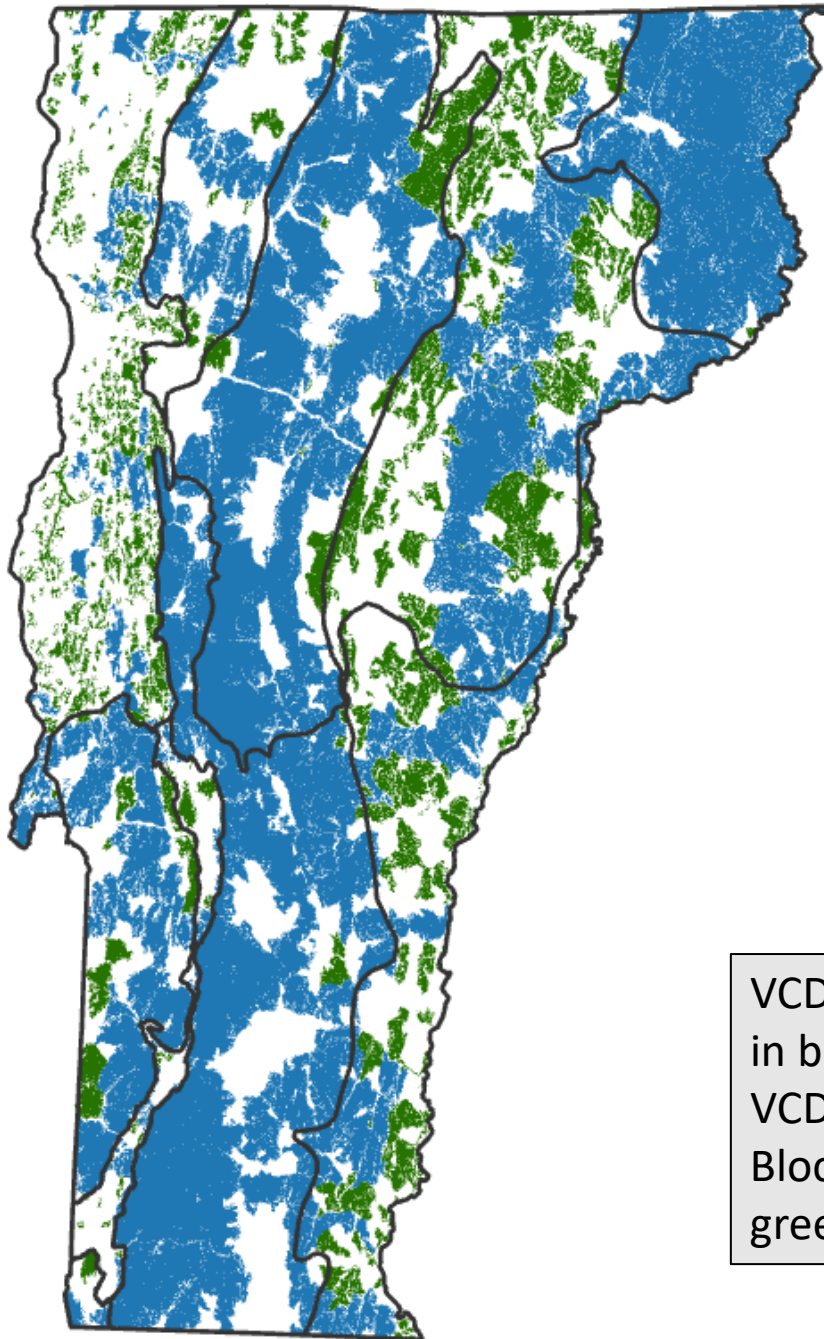
 5-15%

 15-20%

 20-25%

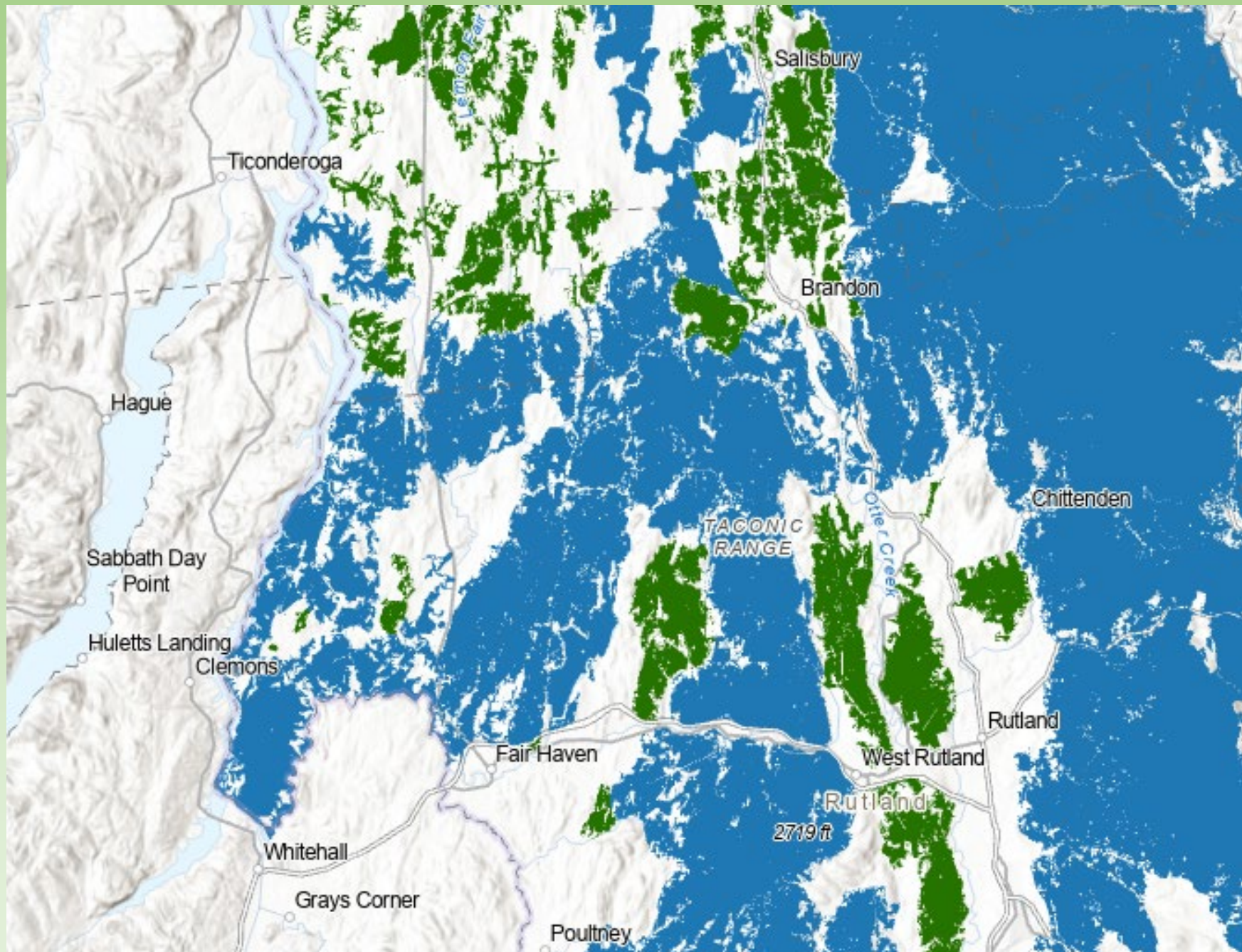
 >25%

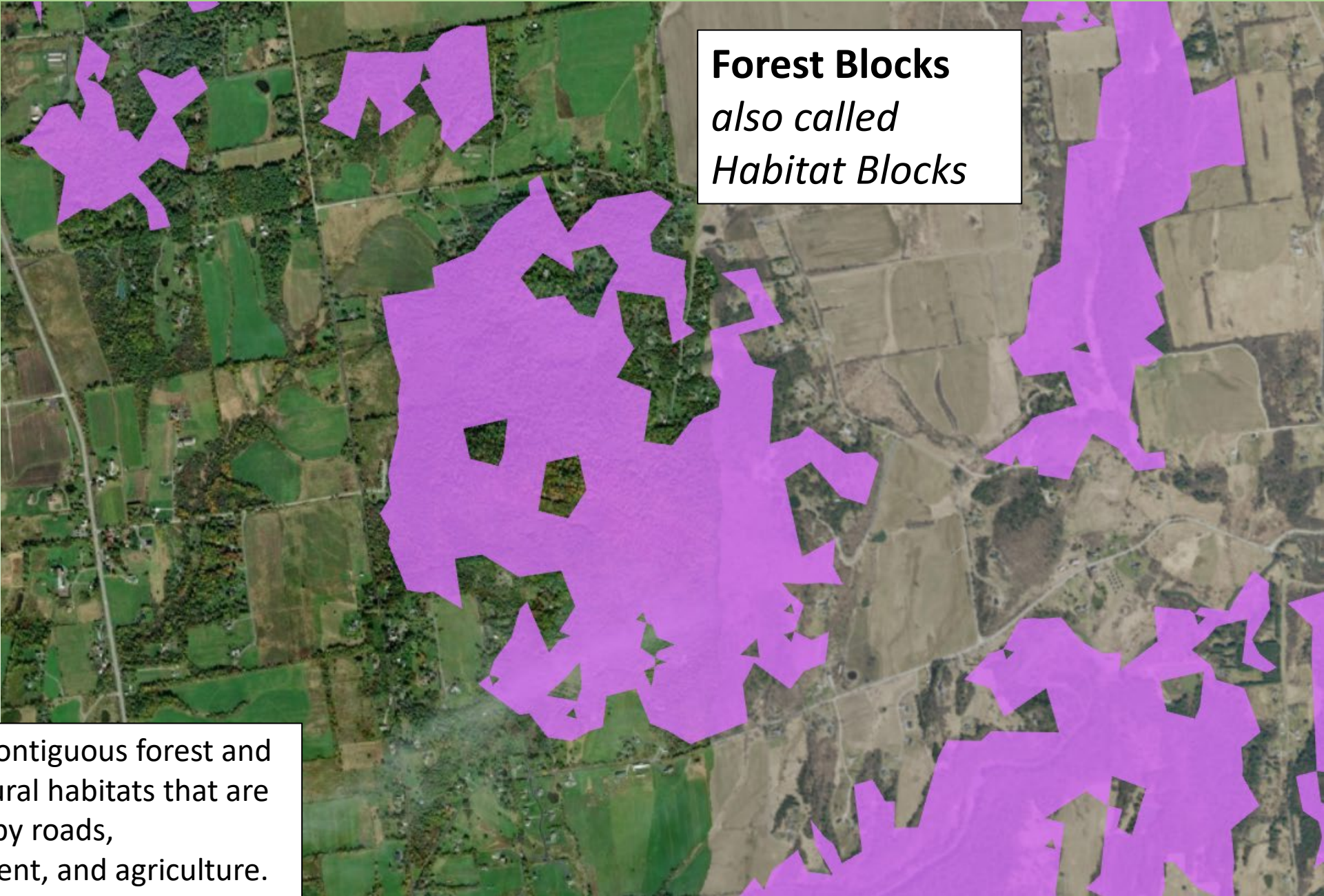




VCD Highest Priority Connectivity Blocks
in blue

VCD Highest Priority Interior Forest
Blocks and Geological Diversity Blocks in
green





Forest Blocks
also called
Habitat Blocks

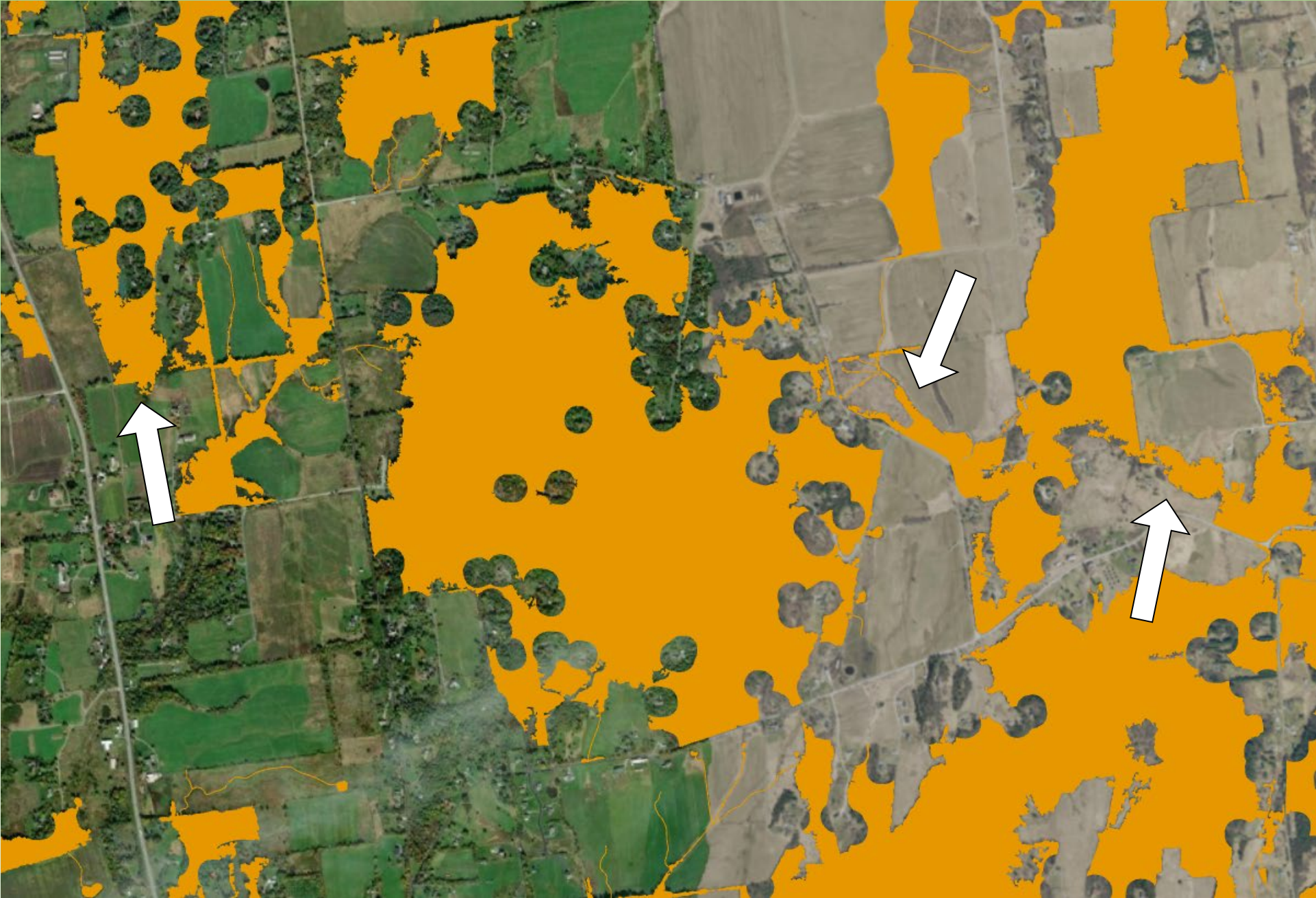
Areas of contiguous forest and other natural habitats that are bounded by roads, development, and agriculture.



New for 2024

Much improved
mapping of
habitat blocks

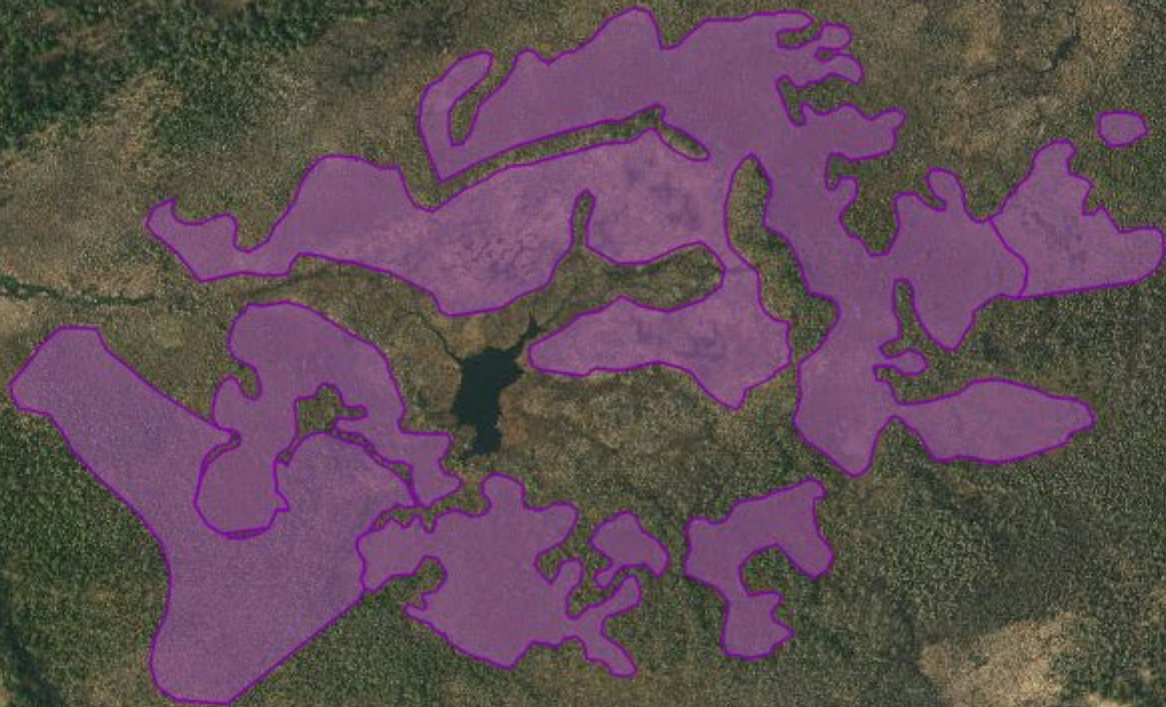




Natural Communities, Old Forests, Important Wildlife Habitats, and Rare Species

- Essential for maintaining an ecologically functional landscape
- But there are challenges as Act 250 triggers:
 - Some features are dynamic
 - Inconsistent mapping
 - Landowner trust





Franklin Bog – example of incomplete mapping of significant natural communities

Dry Transition Hemlock Forest – Old Forest
on private land in Springfield



Photo: Shelby Perry,
Northeast Wilderness Trust