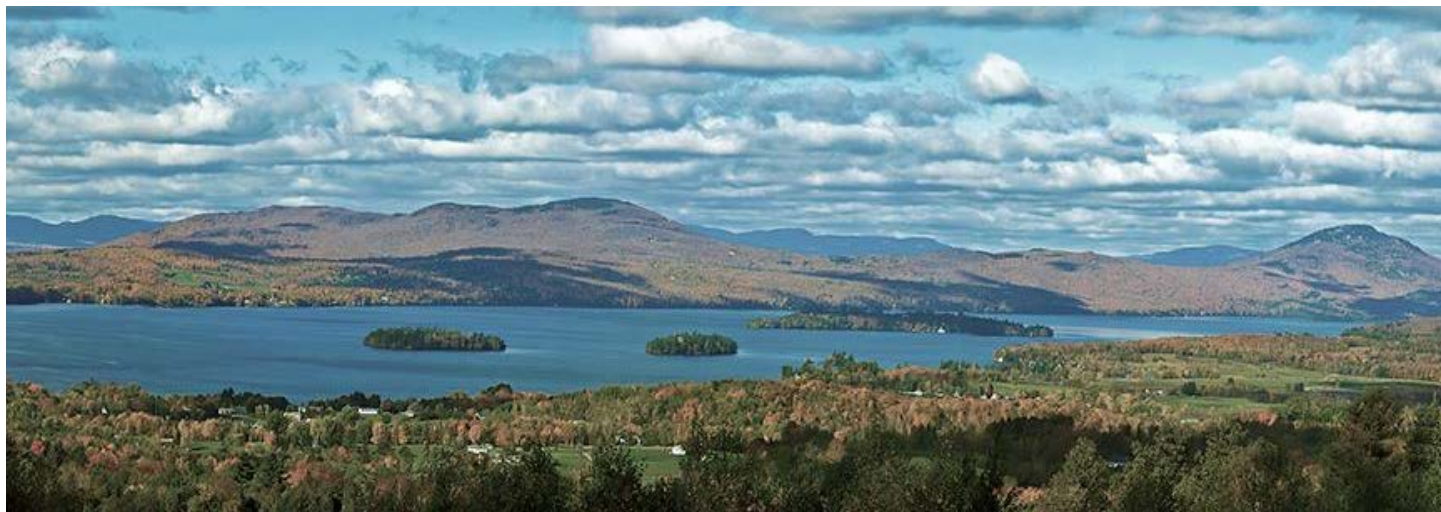


# One Lake, Two Views

A view of Lake Memphremagog to the Northwest where the waters flow towards Quebec, providing drinking water for 175,000 of our Canadian neighbors.



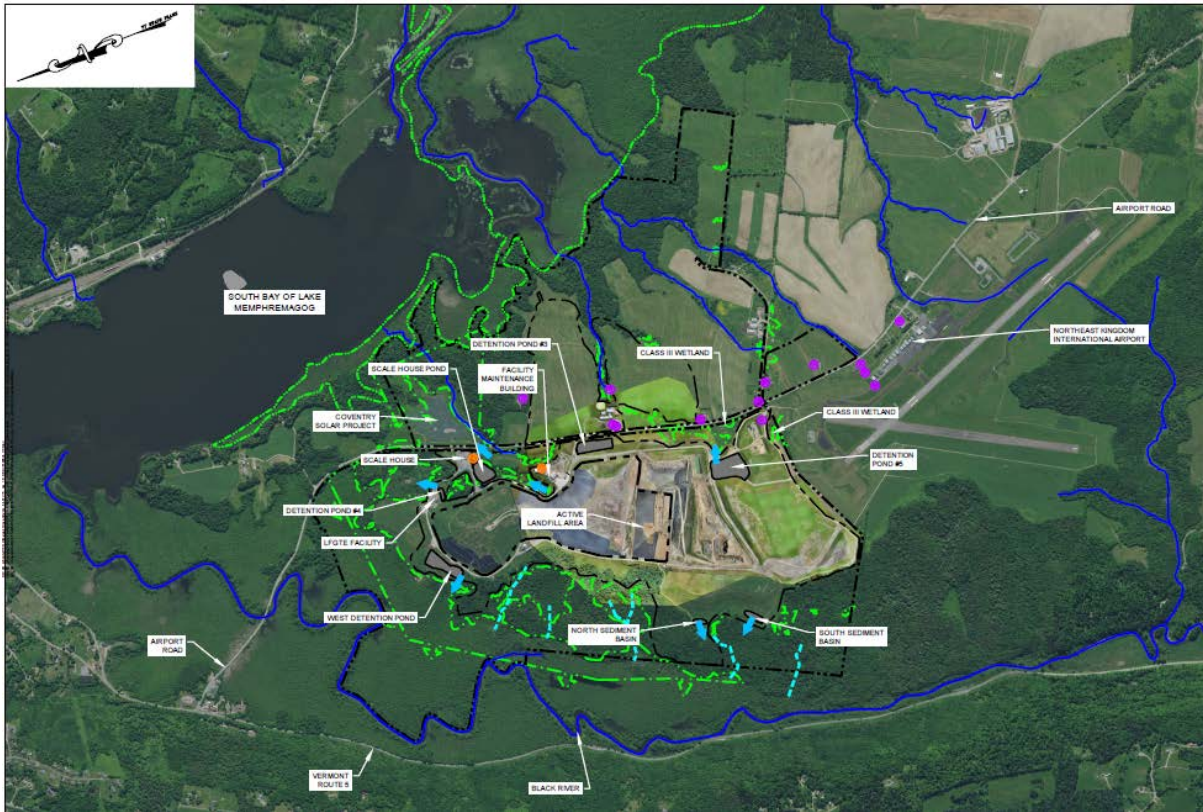
A view to the Southwest where the mega landfill, an outdated solid waste disposal model, looms over the wetlands, Black River, and Lake Memphremagog's South Bay.



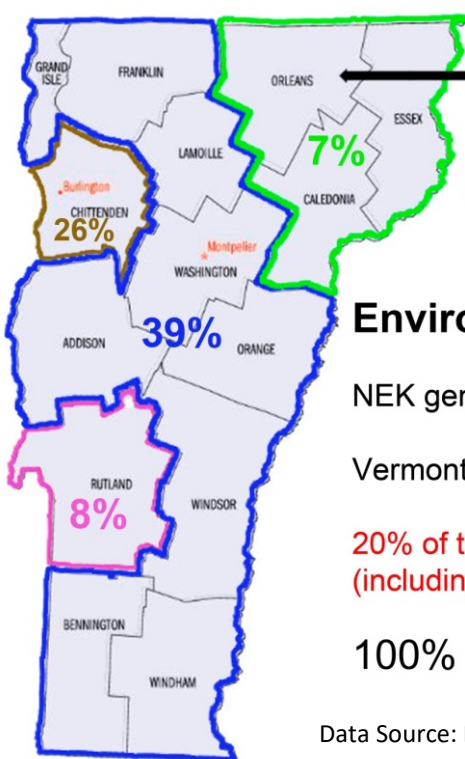
Don't Undermine Memphremagog's Purity  
NoLakeDump.com



The landfill is Surrounded by Wetlands, and in close proximity to the Black River and the South Bay of Lake Memphremagog.



Data Source: Location Map, April 2022, Sanborn Head, Erosion Prevention and Sediment Control Plans



20% out of state

### Environmental Injustice!

NEK generates only 7% of the waste,

Vermont as a whole generates 80% of the waste,

20% of the waste is imported from other states (including PFAS laden sludge)

100% of the waste is dumped into the NEK

Data Source: NEWSVT Quarterly Disposal, Recycling, and Composting Facility Reports 2022 Q1, Q2 & Q3



Don't Undermine Memphremagog's Purity  
NoLakeDump.com