

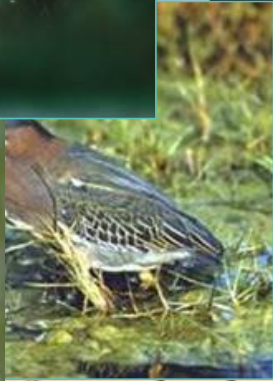
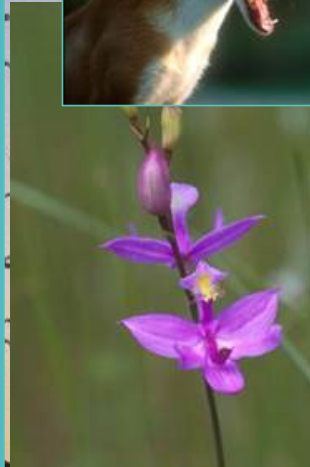
VT Agency of Natural Resources

Protecting, Managing & Conserving a Healthy
Landscape for Forests, Fish, Wildlife, People and more

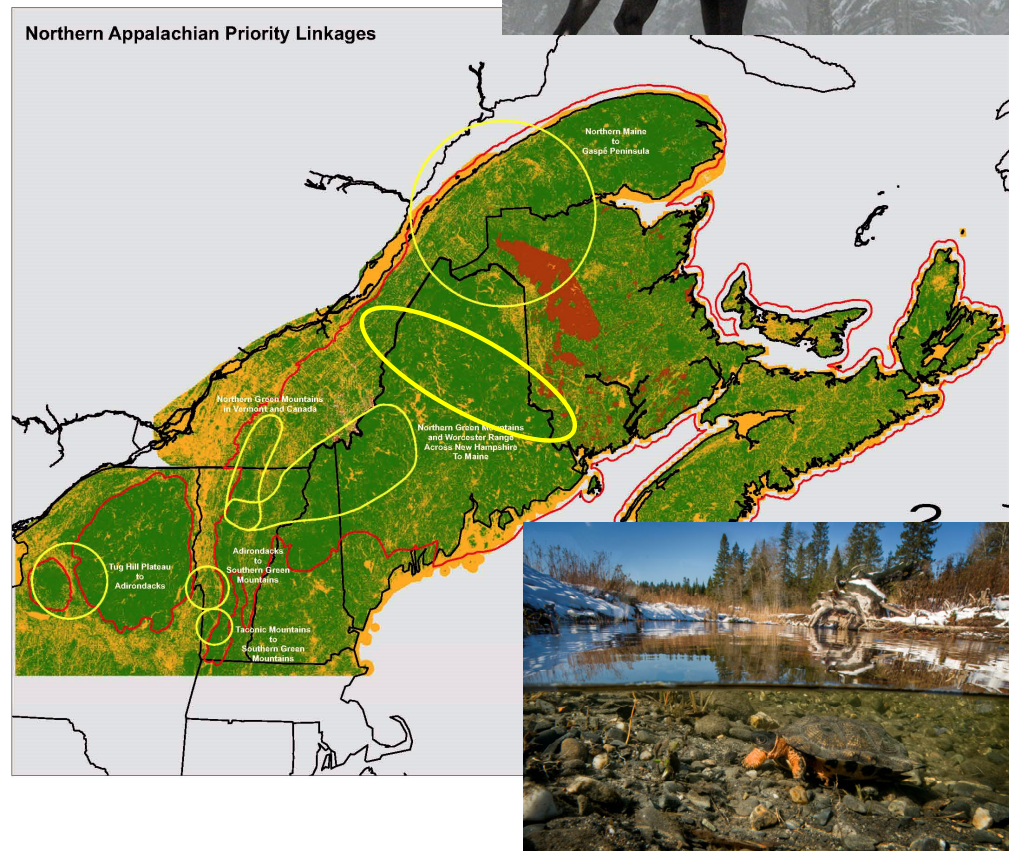
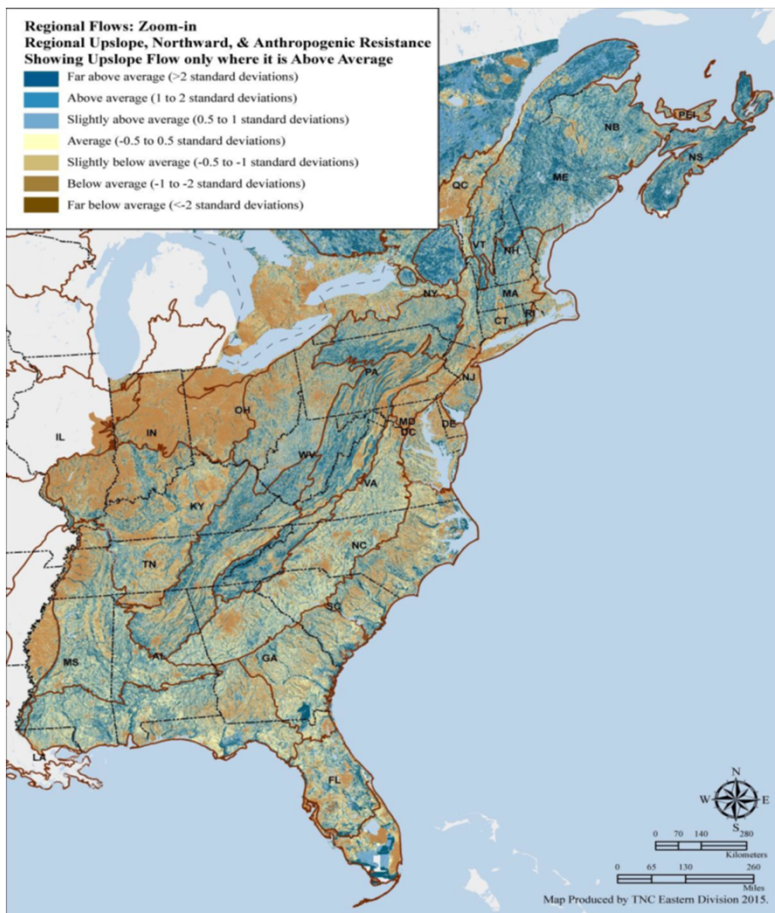


Becca Washburn, Director of Lands Administration & Recreation
John Austin, Lands and Habitat Program Manager
Wildlife Division

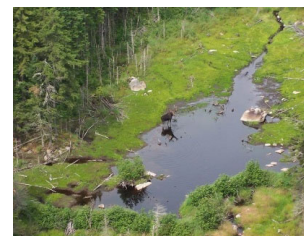
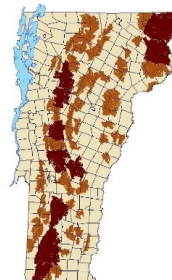
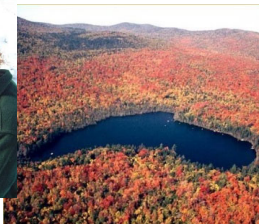
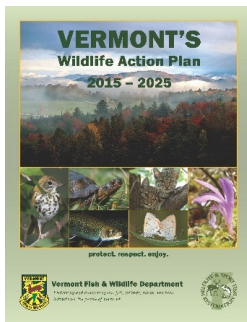
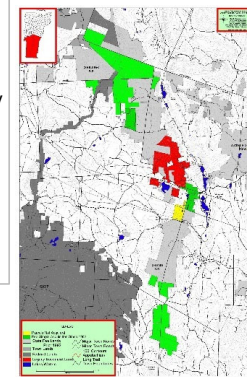
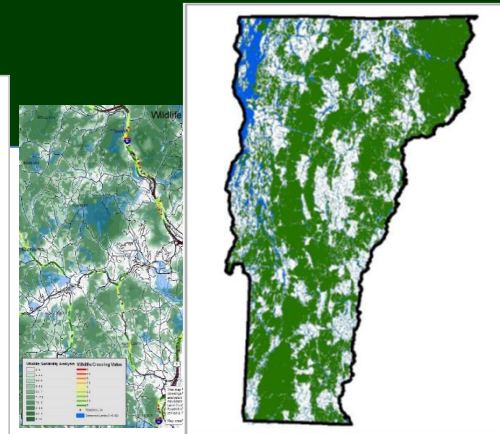
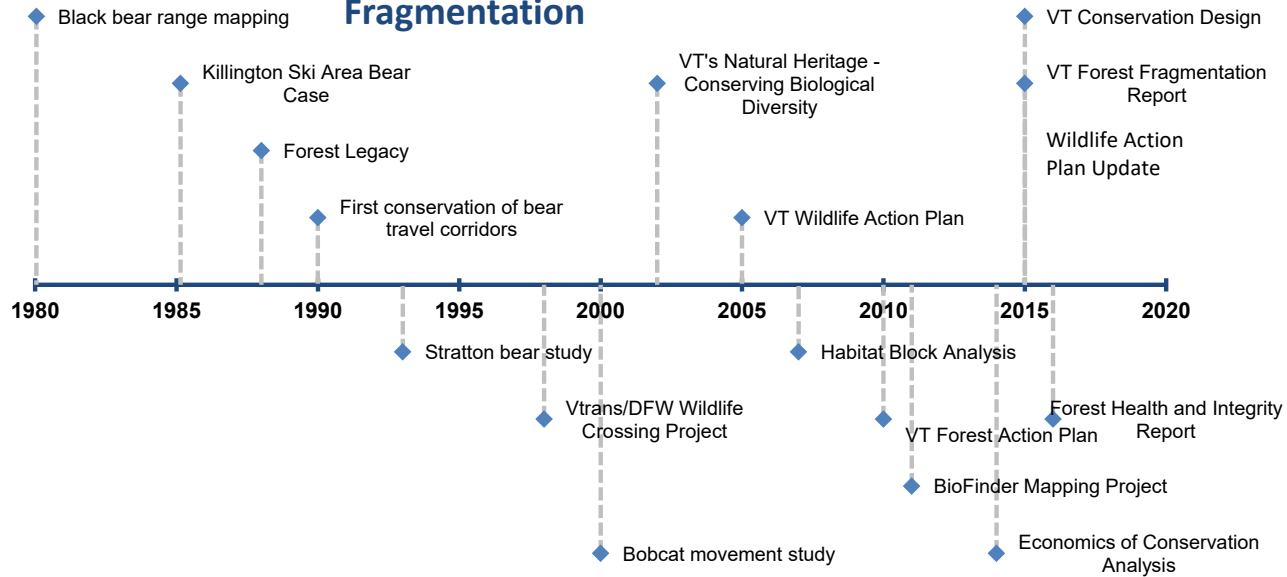
How can we ensure the conservation of all species and maintain a healthy landscape?



Regional Connectivity



Progression of Knowledge & Information about Forest Fragmentation





Habitat Conservation is Fundamental to Wildlife Conservation

- Technical Support to Private Landowners
- **Habitat Protection through Act 250 & Sec 248**
- Conservation Planning Support to VT Communities
- **Public Land Management with ALL Partners**
 - Land Conservation

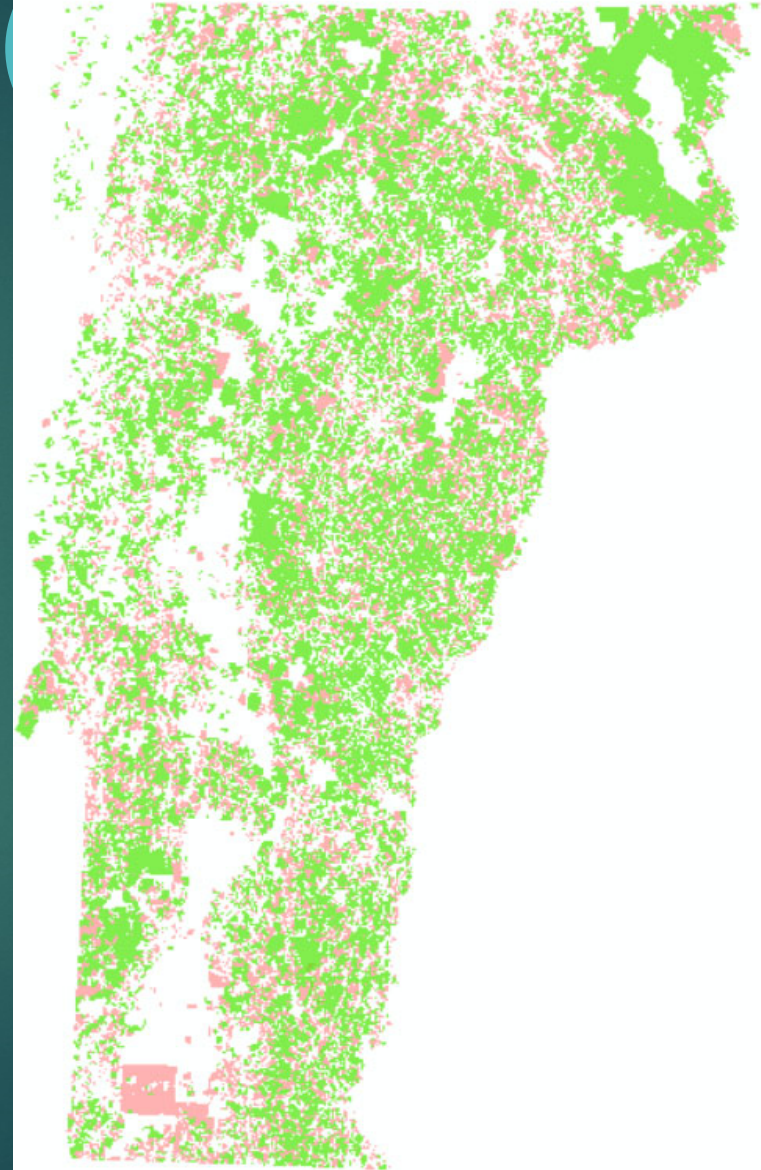
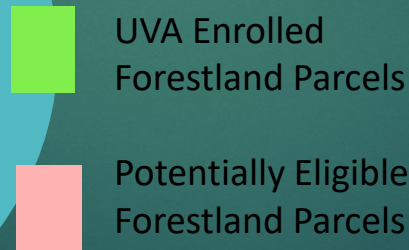
Parcels Enrolled in UVA

55% of eligible forestland parcels are enrolled

- 16,000 parcels enrolled
- 29,000 parcels eligible

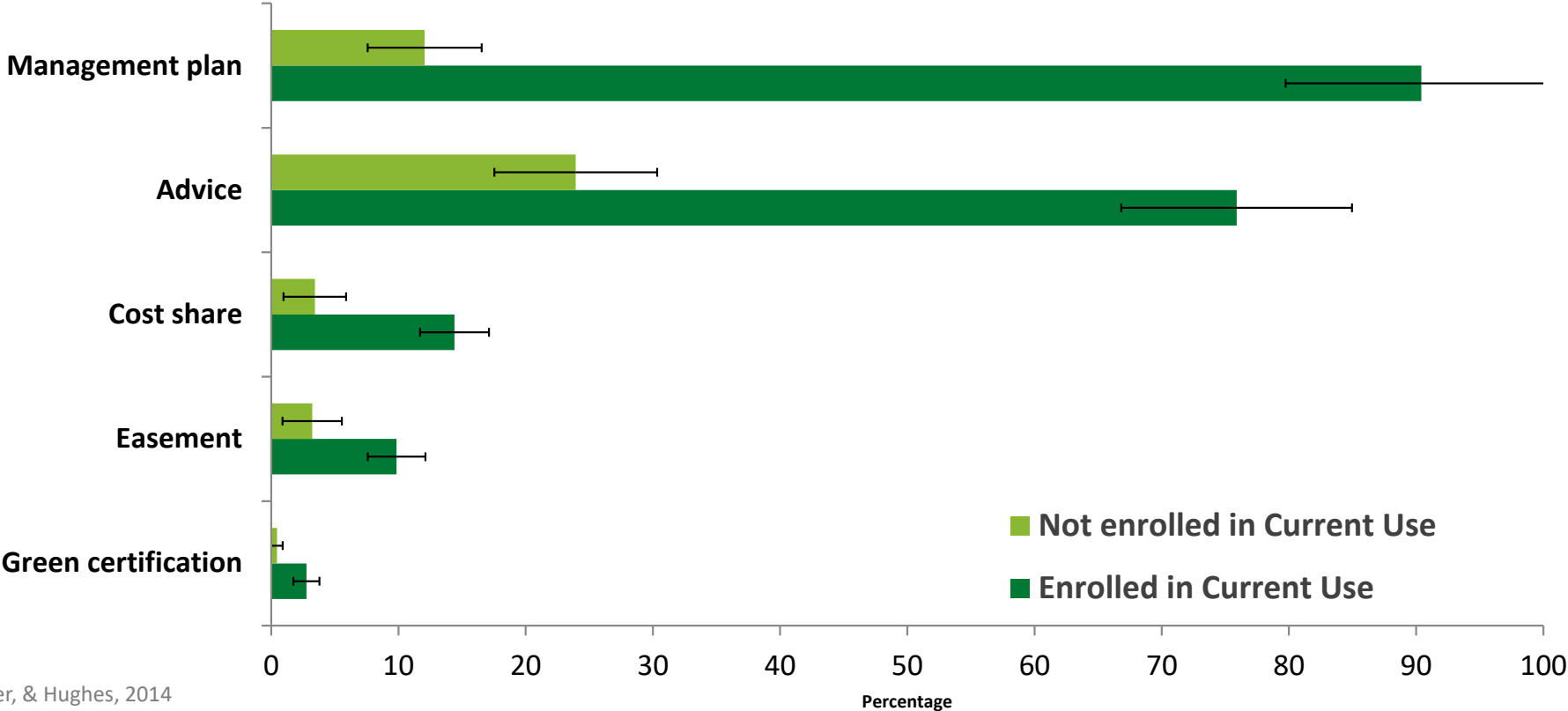
70% of eligible forest acres are enrolled

- 2.01 million acres enrolled
- 2.77 million acres eligible



Extended Benefits of UVA Program

Percentages of family forest land and ownerships with 25+ acres



Butler, Butler, & Hughes, 2014



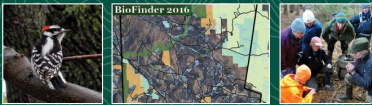


	2018	2019	2020	2021	2022	5 Year Total
Invasive Plant Control (acres)	800	622.6	831.8	507.8	856.3	3618.5
Tree and Shrub Establishment (acres)	2.5	1	33.6	29.5	4.9	71.5
Apple Tree Release (acres)	9.3	9.75	51.4	52.7	40	163.2
Early Successional Habitat Development (acres)	57	33.4	69.1	30.8	49.6	239.9
Delayed Mowing/Brush Hogging (acres)	65.9	112	93.2	60	41.8	372.9
Young Forest (acres)	53.1	59.6	97	78.1	59.5	347.3
Forest Stand Improvement (acres)	188.2	192.2	122.4	70.2	110.1	683.1
Mast/Crop Tree Release (acres)	67.5	28.75	80.4	135	119.8	431.5
FSI - Forestry for the Birds (acres)	17.2	14	25	10	15	81.2



Mapping Vermont's Natural Heritage

A Mapping and Conservation Guide for Municipal and Regional Planners in Vermont



Conserving Vermont's Natural Heritage

A Guide to Community-Based Planning for the Conservation of Vermont's Fish, Wildlife, and Biological Diversity



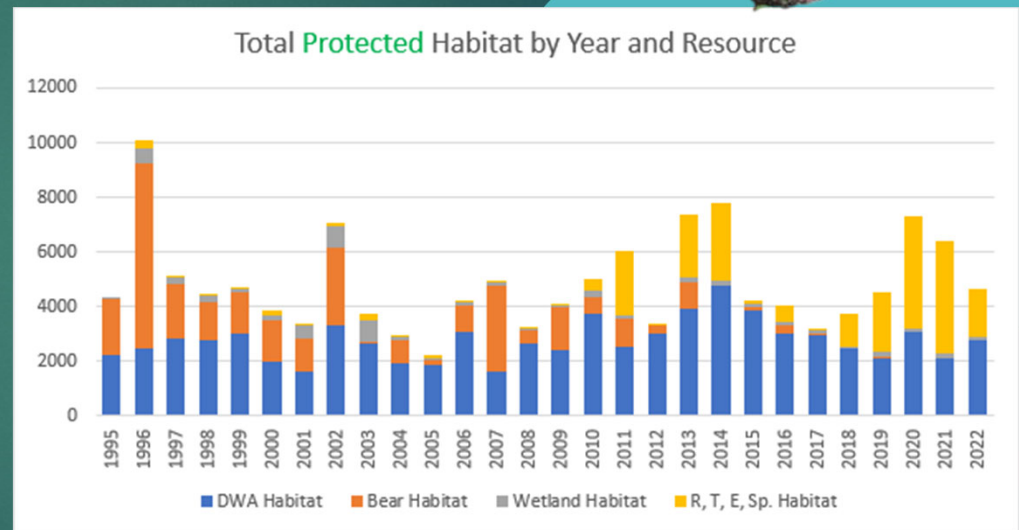
VT Fish & Wildlife Dept. – Leading on Conservation & Land Use Planning

- ▶ 2016, Mapping VT's Natural Heritage
- ▶ 2005, Conserving VT's Natural Heritage
- ▶ Providing planning, mapping, and data analysis support to all 251 towns in Vermont
- ▶ Working closely with all VT Regional Planning Commissions
- ▶ Support the Association of Vermont Conservation Commissions
- ▶ Worked with VNRC to assess and evaluate all town and regional plans every 10 years since 2000.



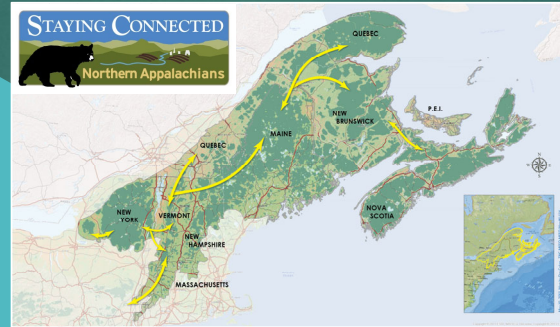
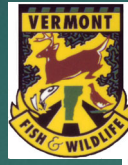
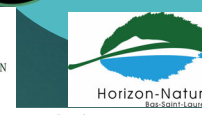
VT Fish & Wildlife Dept. – Protecting Fish & Wildlife Habitat through Act 250, Section 248, Wetland Permits, FERC, and More

- ▶ Protected over 39,000 acres of necessary wildlife habitat since 2016.
- ▶ Map & provide data on fish, wildlife, habitats and natural communities to guide thoughtful development



VT Fish & Wildlife
Dept. – Addressing
Wildlife
Conservation in
Renewable
Energy
Development

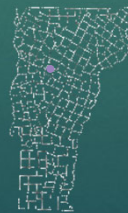




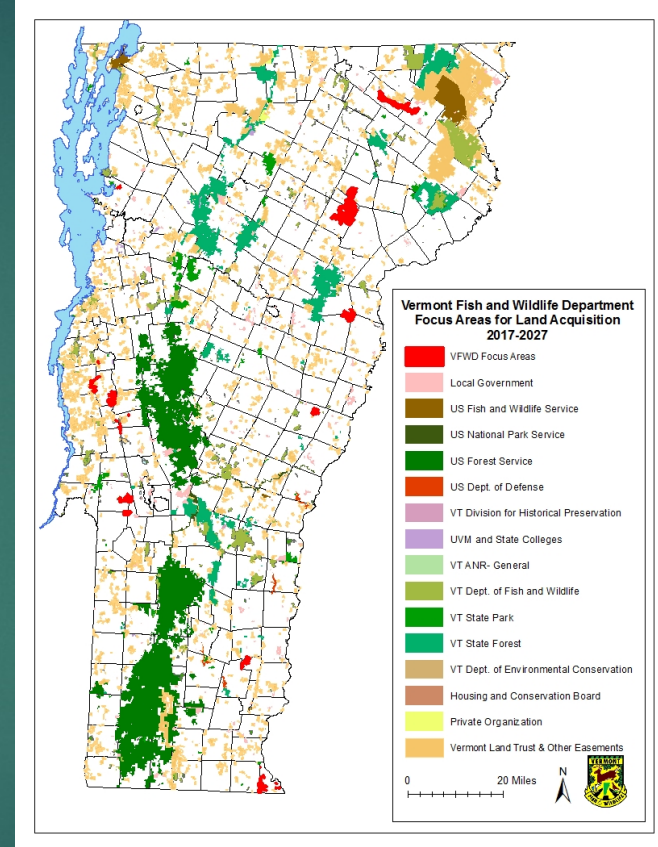
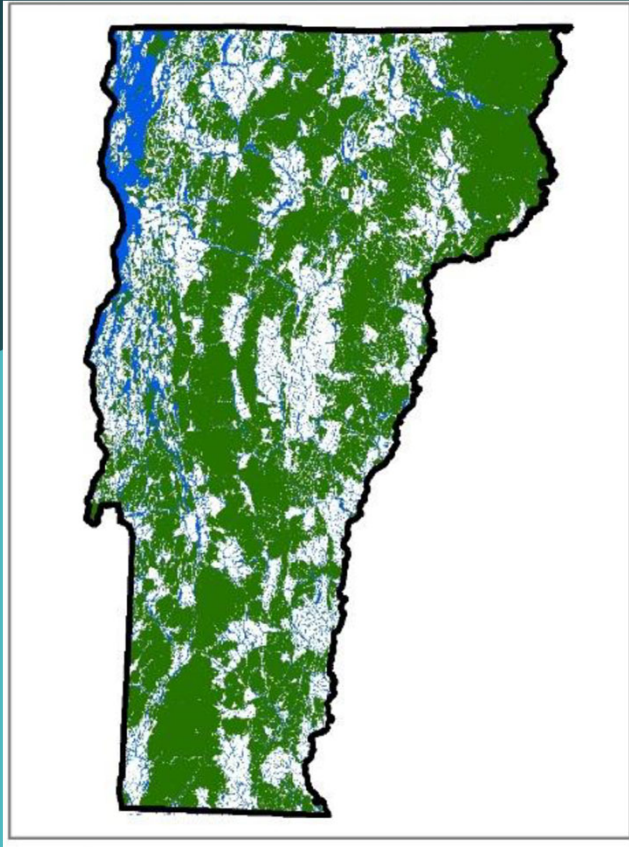
Coordinating Transportation investments and Land protection



Little River Shelf under Interstate 89



VCD & Land Conservation



A photograph of a dense forest with tall, thin trees and a ground covered in fallen leaves and moss. The text "PERMANENT LAND PROTECTION" is overlaid in white, bold, uppercase letters, centered horizontally and slightly above the vertical center. A thin white horizontal line is positioned directly below the text.

PERMANENT LAND PROTECTION

SUCCESS FACTORS

- Willing landowners
- Conservation organization
- Strategic conservation plan
- Funding
- Stewardship



Fee Acquisition vs. Conservation Easements

Fee Acquisition

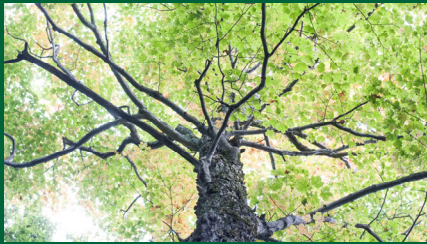
- Acquire full “bundle of sticks”
- Highest value
- Most management authority & responsibility
- Ownership responsibilities

Conservation Easement

- Acquire certain “sticks” like public access & development
- Less value than full cost to acquire parcel
- Management authority and responsibility commensurate with “sticks” acquired
- Stewardship obligations

Conservation values present on a property, in addition to other factors, will inform whether to acquire a conservation easement or fee title

AGENCY OWNERSHIP & MANAGEMENT



Acres

360,000 fee ownership

140,000 in conservation easements on private land



Evaluation Criteria

Ecological values

Public access

Management value

Funding

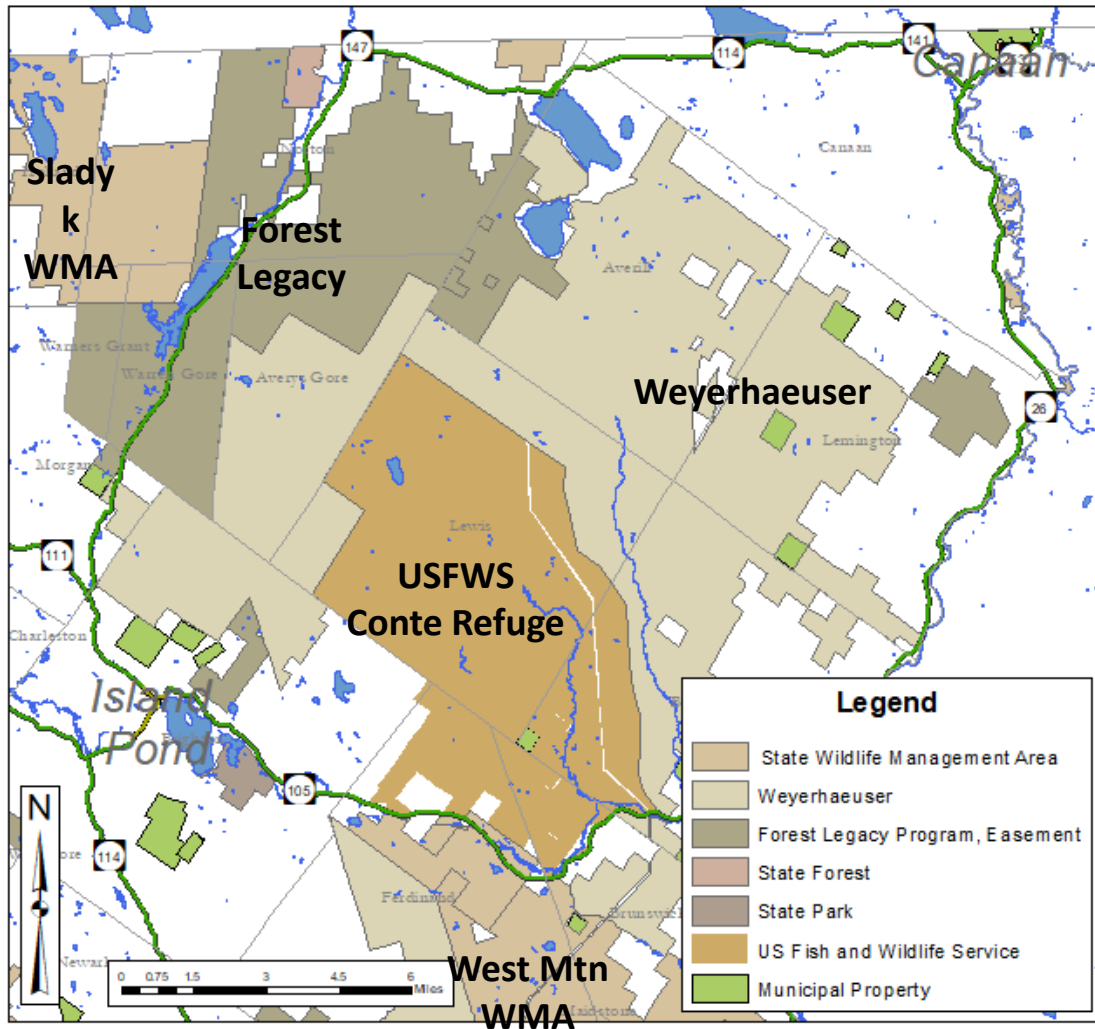
Partners





ALBURGH BLUFFS

- 164 acres added to State Park
- 16 Natural communities
- 25 Rare or endangered species
- 15+ years to acquire
- Partnerships!
- FPR ownership



CHAMPION LANDS

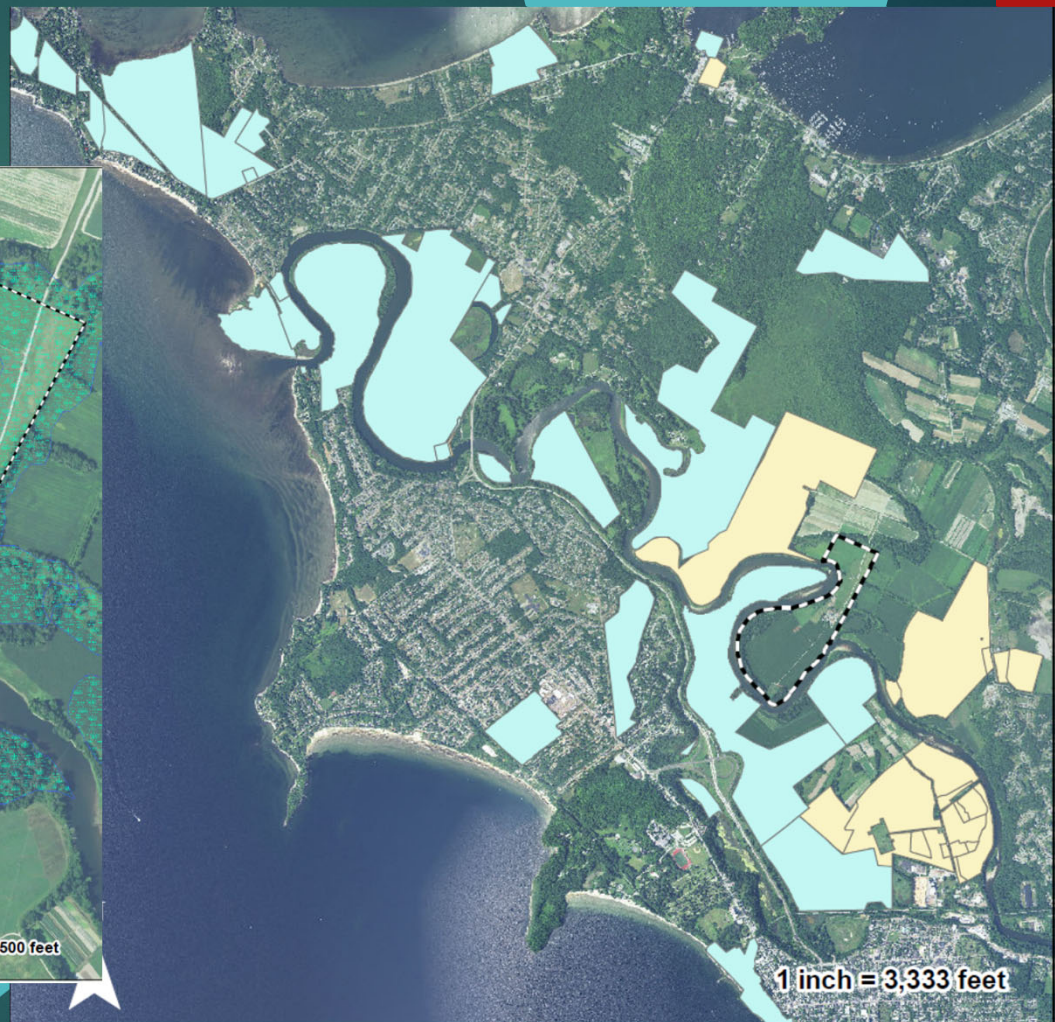
- 132,000 acres
- Conservation values
 - Working forest
 - Ecological protection
 - Public access
- Multiple ownership outcomes
- Partnerships!

VFWD EPA-Funded Wetland Acquisition and Restoration

- Overview – How did this come to be?
- FY18, FY19 and FY20 total \$4.35 million
- Anticipate \$2 million for FY21
- Future Opportunities
- Minimum Requirements
- Steering Committee:
Representation from DEC,
Fisheries and Wildlife.



Intervale WMA Fitzgerald, 124 acres





AGENCY OWNERSHIP & MANAGEMENT

The Agency Lands concept is intended to foster inter-department coordination and communication and where appropriate, improve consistency regarding state lands management and administration while recognizing and embracing the important distinctions among the three ANR department land holdings.

KEY TAKEAWAYS

- Vermont is a patchwork of different land uses and ownerships requiring a variety of tools and strategies to maintain an ecologically functional and connected landscape
- Permanent land protection is an important tool that requires key success factors
- Not all land is equal –VCD informs where investments in permanent land protection will achieve the greatest benefits