

FY 2024-2025

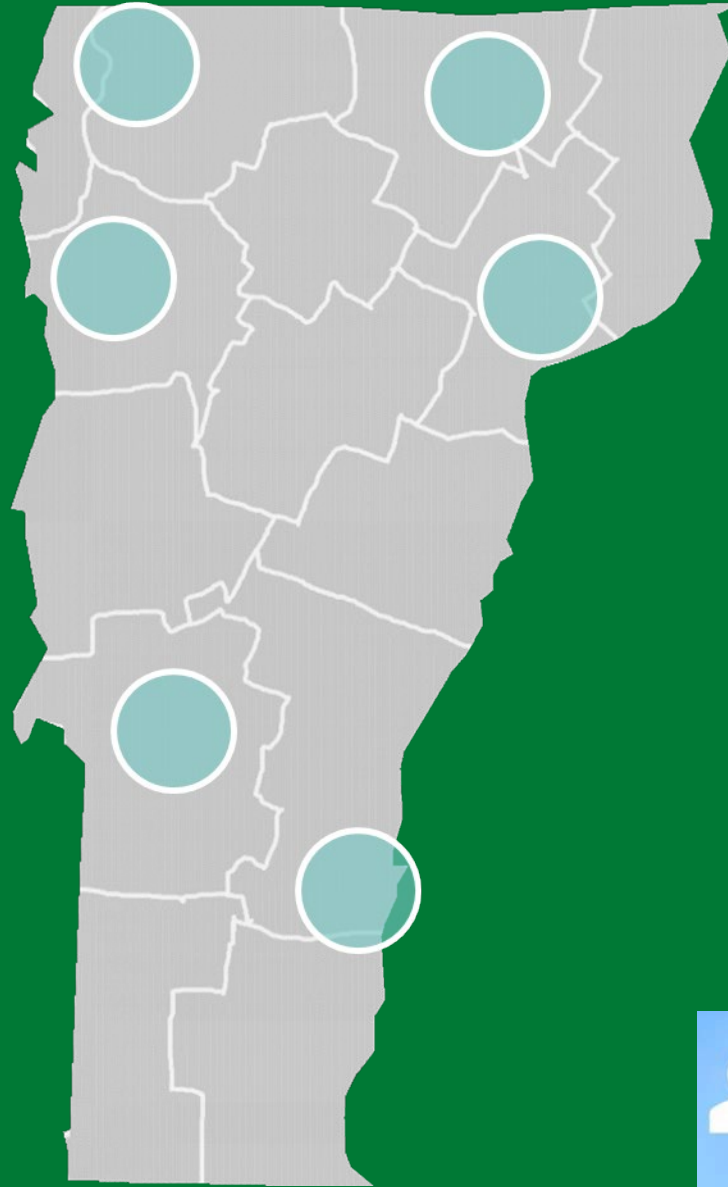
DOC Women's Facility Programming and Conceptual Design

Jennifer M. V. Fitch, P.E.
Commissioner

Joe Aja
Director, Design & Construction

Tabrena Karish
Project Manager, Design & Construction

January 16, 2024



TIMELINE:

2020- 2021: Developed Correctional Facility Feasibility Study

2021-2022: Programming and Conceptual Design of the Women's Facility

2023-2024: Site Selection

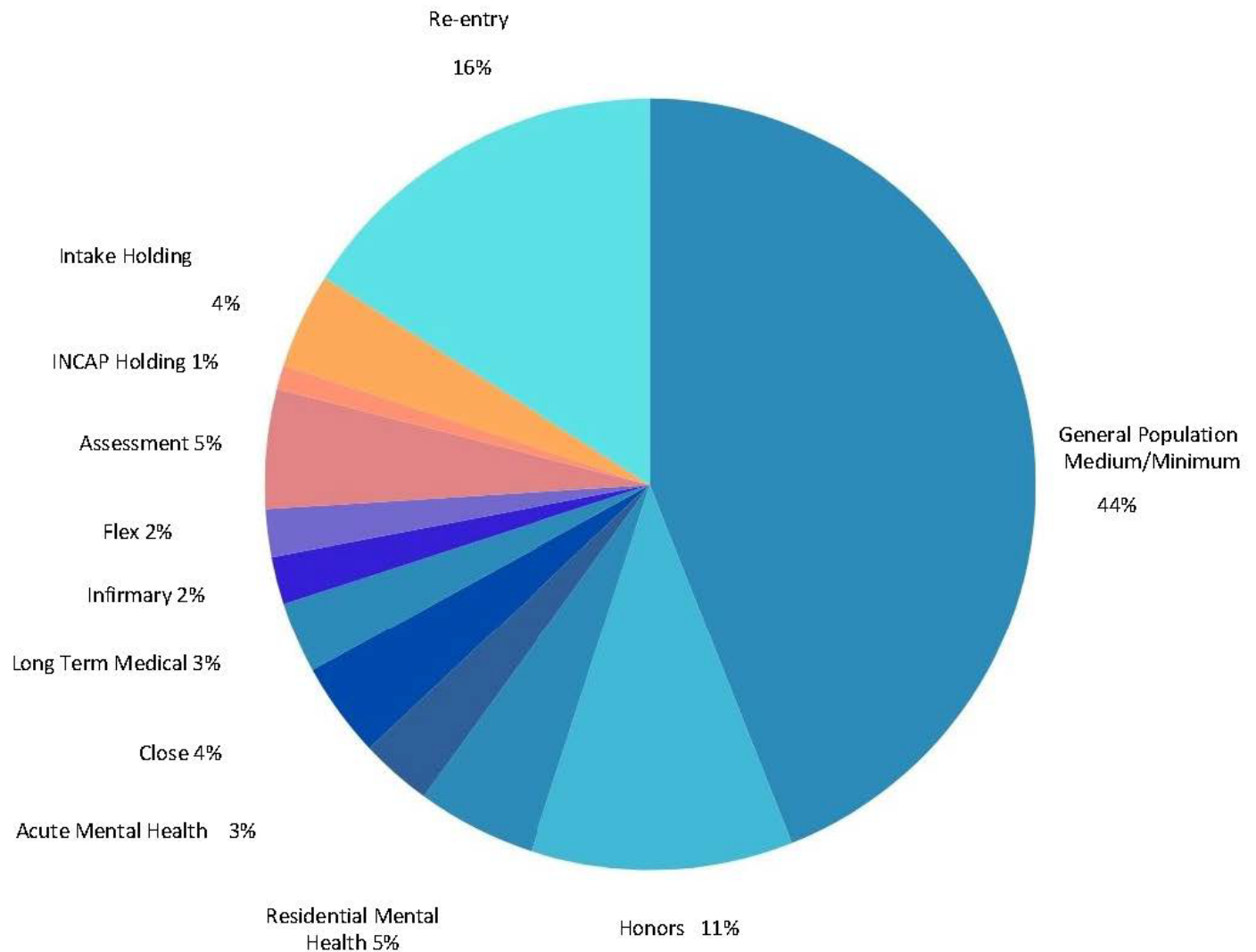


Evidence Based Design



HOUSING BREAKDOWNS

RE-ENTRY: 30+
GENERAL POPULATION: 80
HONORS: 20
RESIDENTIAL MENTAL H: 10
ACUTE MENTAL HEALTH: 5
CLOSE: 8
LONG TERM MEDICAL: 5
INFIRMARY: 4
FLEX: 4
ASSESSMENT: 10
INCAP HOLDING: 2
INTAKE HOLDING: 7



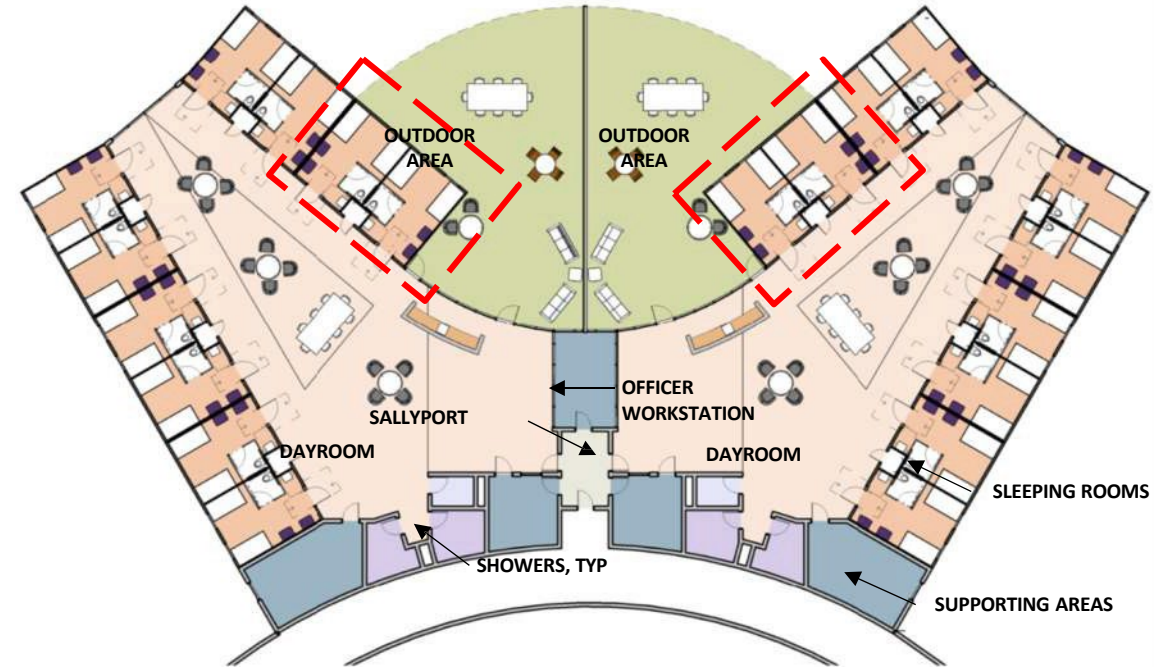
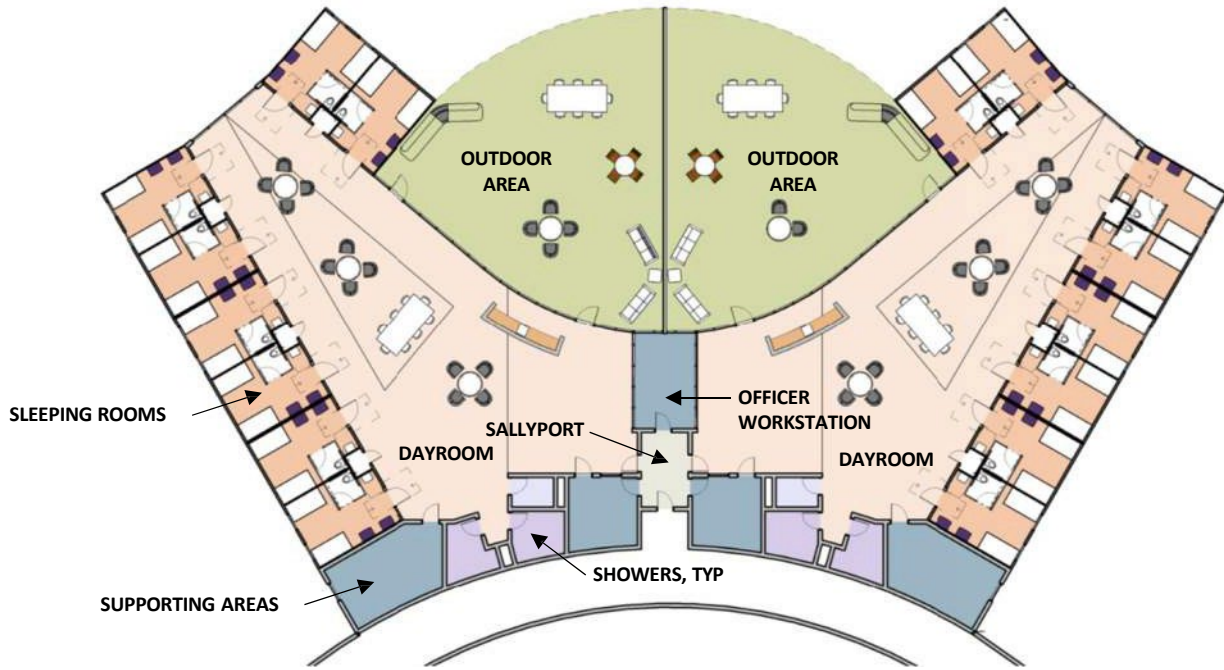
SECURE RESIDENTIAL TREATMENT FACILITY

SECURE FACILITY						RE-ENTRY		
RATED BED CAPACITY			ADDITIONAL OPERATIONAL BED CAPACITY			RATED CAPACITY		
UNIT	CAPACITY (BEDS)	CONFIGURATION	UNIT	CAPACITY (BEDS)	CONFIGURATION	UNIT	CAPACITY (BEDS)	CONFIGURATION
CLOSE	8	SINGLE, SECURE SLEEPING ROOM	INTAKE	7	2 SINGLE, 2 GROUP (4) SECURE SLEEPING ROOM	COMMUNITY RELEASE (WORK RELEASE / RE-ENTRY)	30	DOUBLE SLEEPING ROOM, POD CONFIGURATION OF 10 BEDS
MEDIUM	40	DOUBLE SLEEPING ROOM	INCAP	2	SINGLE SECURE SLEEPING ROOM	RE-ENTRY (EXPANSION)	(30 BEDS)	DOUBLE SLEEPING ROOM, POD CONFIGURATION OF 10 BEDS
MINIMUM	40	DOUBLE SLEEPING ROOM	ASSESSMENT	10	DOUBLE SECURE SLEEPING ROOM			
LONG TERM/CHRONIC MEDICAL	5	DOUBLE SLEEPING ROOM (SPACE FOR (CAREGIVER)	INFIRMARY	4	SINGLE ISOLATION SECURE SLEEPING ROOM			
ACUTE MENTAL HEALTH	5	SINGLE SECURE SLEEPING ROOM	FLEX HOUSING	4	DOUBLE SECURE SLEEPING ROOMS			
RESIDENTIAL MENTAL HEALTH	10	SINGLE SECURE SLEEPING ROOM						
HONORS HOUSING	20	DOUBLE SLEEPING ROOM						
RATED BED CAPACITY	128		OPERATIONAL BED CAPACITY	27		RATED BED CAPACITY	30	
TOTAL CAPACITY*	158							

CONFIGURATION	DRY/WET
SECURE SLEEPING ROOM	WET
SLEEPING ROOM	DRY

RATED BED COUNT	158
NON-RATED BED COUNT	27
FUTURE BEDS	30
TOTAL BEDS (DAY 1)	185
TOTAL BEDS (EXPANDED)	215

EXCLUDES OPERATIONAL BEDS



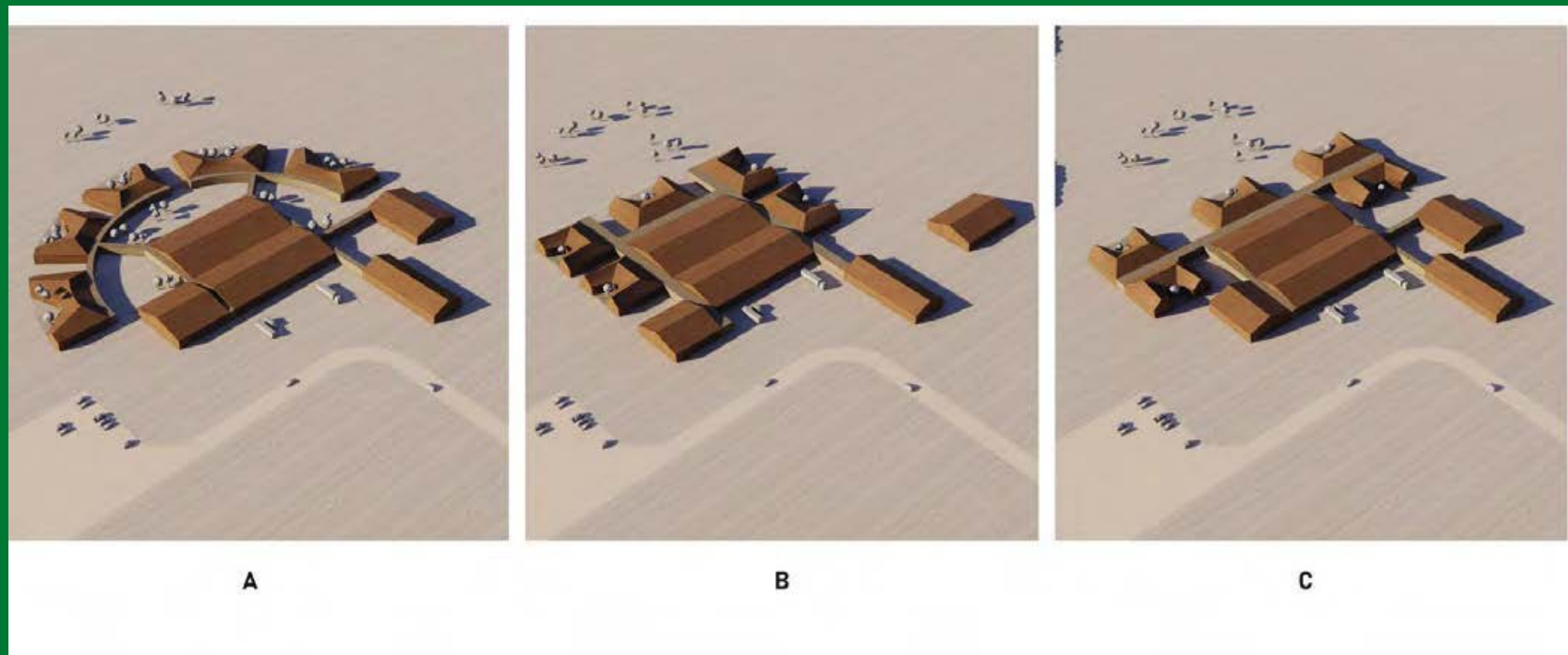
32 BED HOUSING UNIT	
SLEEPING ROOMS	2,457 SF
DAYROOM	5,241 SF
SUPPORT AREAS	1,325 SF
GROSS SQFT TOTAL	9,023 SF

+/- 7%
 GROSS SQUARE FOOTAGE
 INCREASE FOR 8 ADDITIONAL
 BEDS WITHIN A UNIT

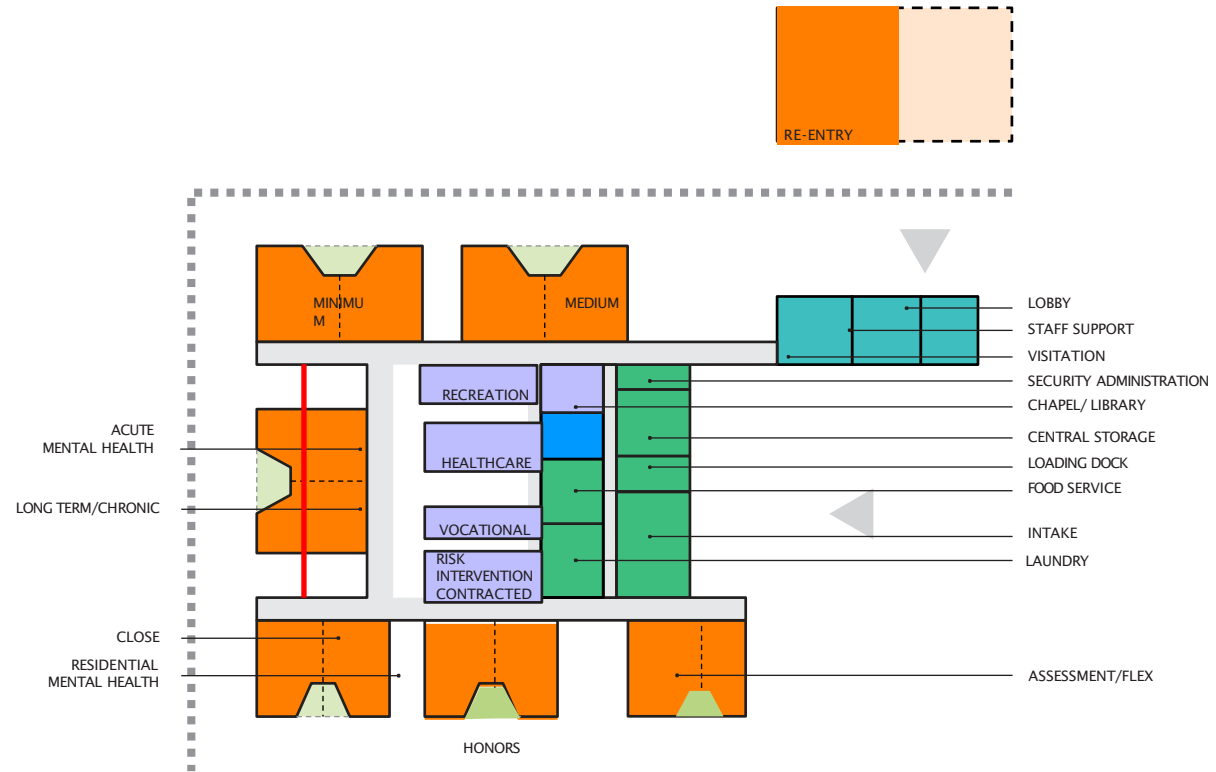
40 BED HOUSING UNIT	
SLEEPING ROOMS	3,071 SF
DAYROOM	5,241 SF
SUPPORT AREAS	1,325 SF
GROSS SQFT TOTAL	9,637 SF

COMPARISON OF 32 vs. 40 BED HOUSING UNIT

MASSING STUDIES



PROGRAM PLAN



- HOUSING
- "THERAPY" PROGRAMS
- DINING
- ADMIN PROGRAMS
- SUPPORT PROGRAMS



Site selection

Legislative approvals of site and scope

Schematic Design, Design Development and Construction Documentation

Permitting

Project Construction

Facility Training Period

Individuals transferred to new facility

CRCF Closure

NEXT STEPS