



STATE OF VERMONT
 Department of Buildings
 and General Services
 Agency of Administration
 Montpelier, Vermont



VERMONT PSYCHIATRIC CARE HOSPITAL
 BERLIN, VERMONT

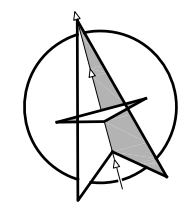
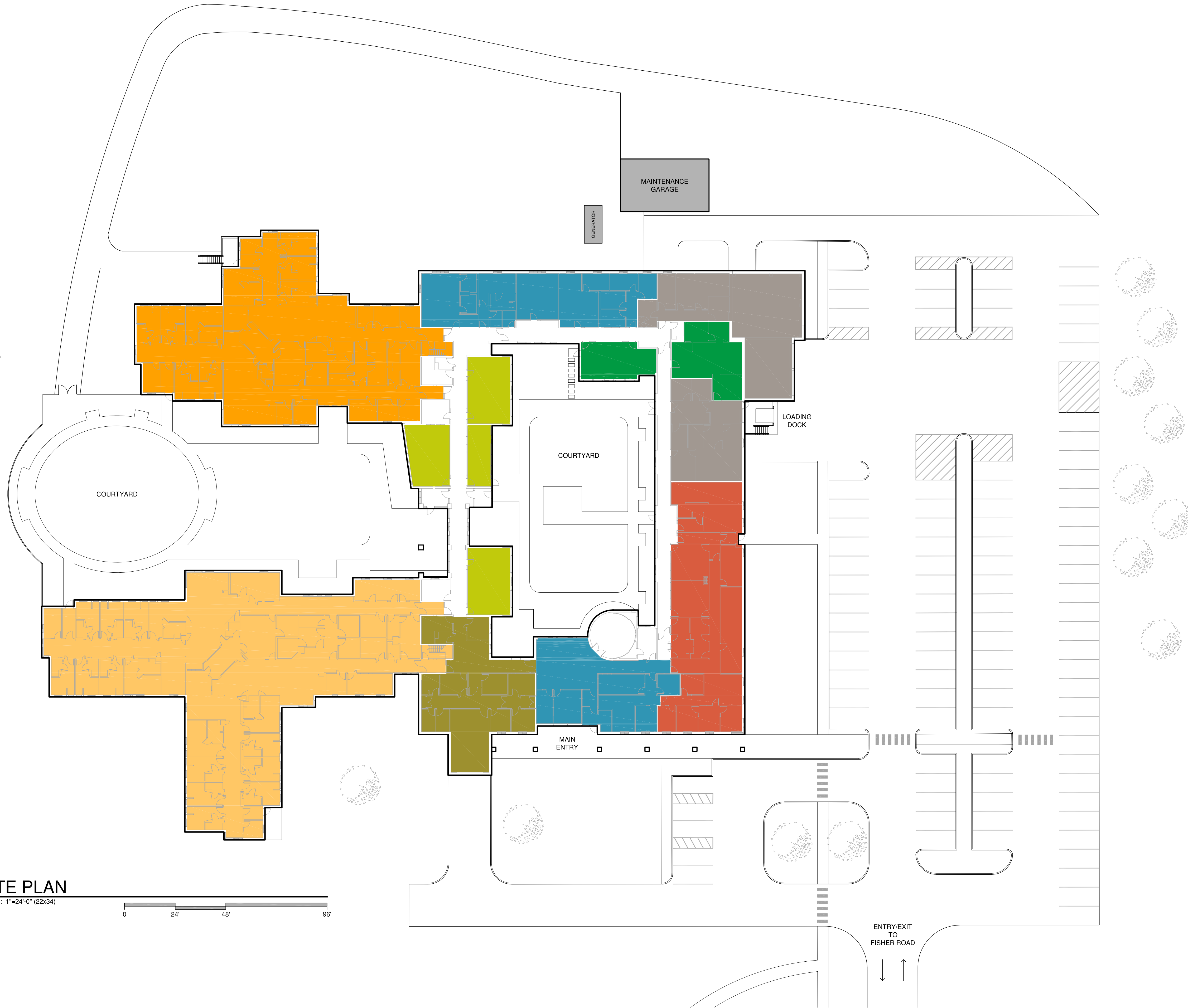
REVISION

SITE PLAN

ENG. JOB NO:
 BLDG. NO: 06091
 DATE: APRIL 2023
 SCALE: AS NOTED
 DRAWN BY: MDB
 APPROVED BY:

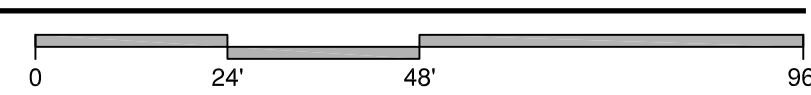
SHEET NUMBER

SK-1



SITE PLAN

SCALE: 1"=24'-0" (22x34)



ENTRY/EXIT
 TO
 FISHER ROAD
 ↓ ↑



VERMONT PSYCHIATRIC CARE HOSPITAL
BERLIN, VERMONT

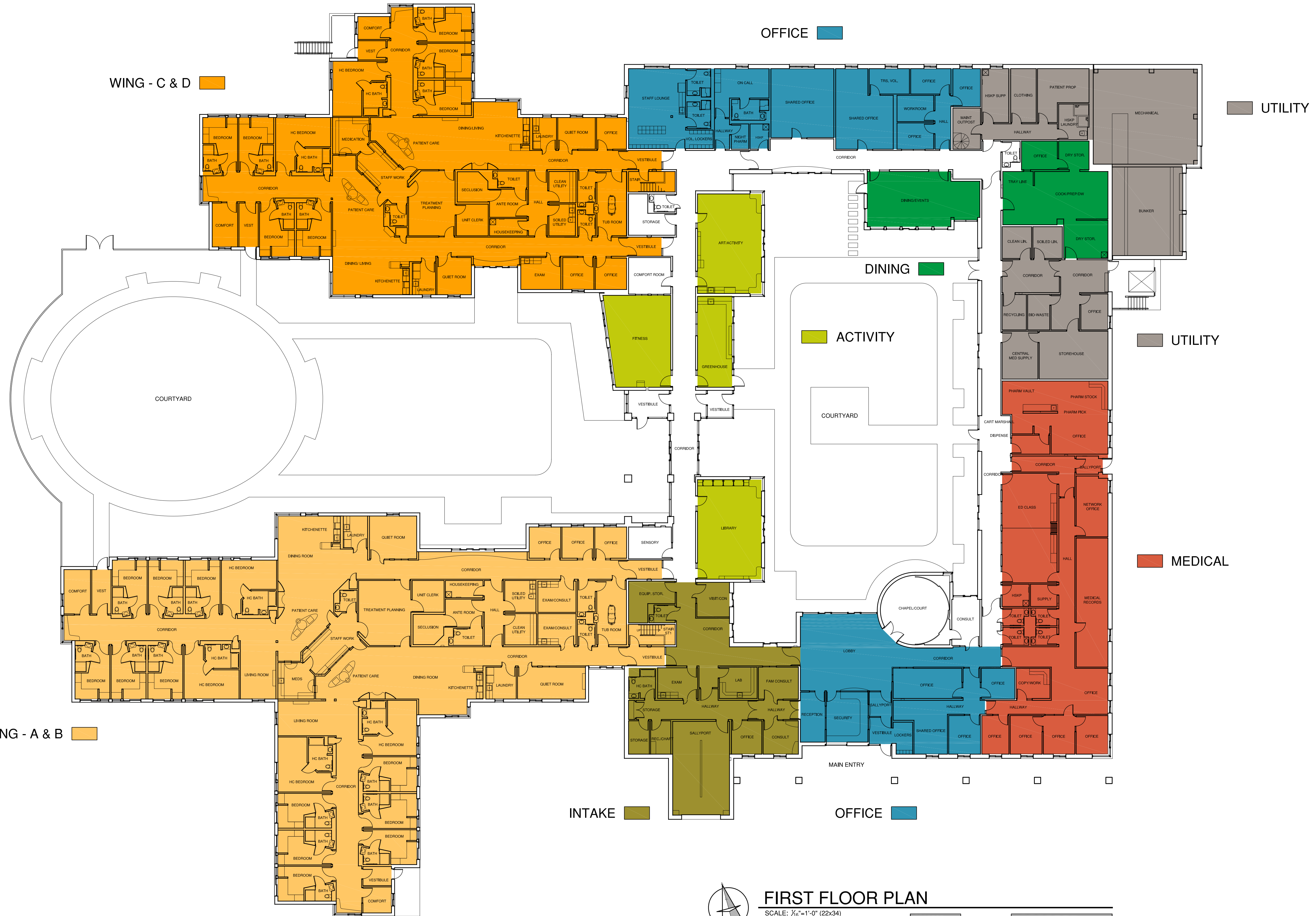
REVISION

FLOOR PLAN

ENG. JOB NO:
BLDG. NO.: 06091
DATE: APRIL 2023
SCALE: AS NOTED
DRAWN BY: MDB
APPROVED BY:

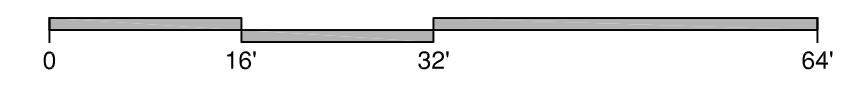
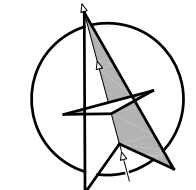
SHEET NUMBER

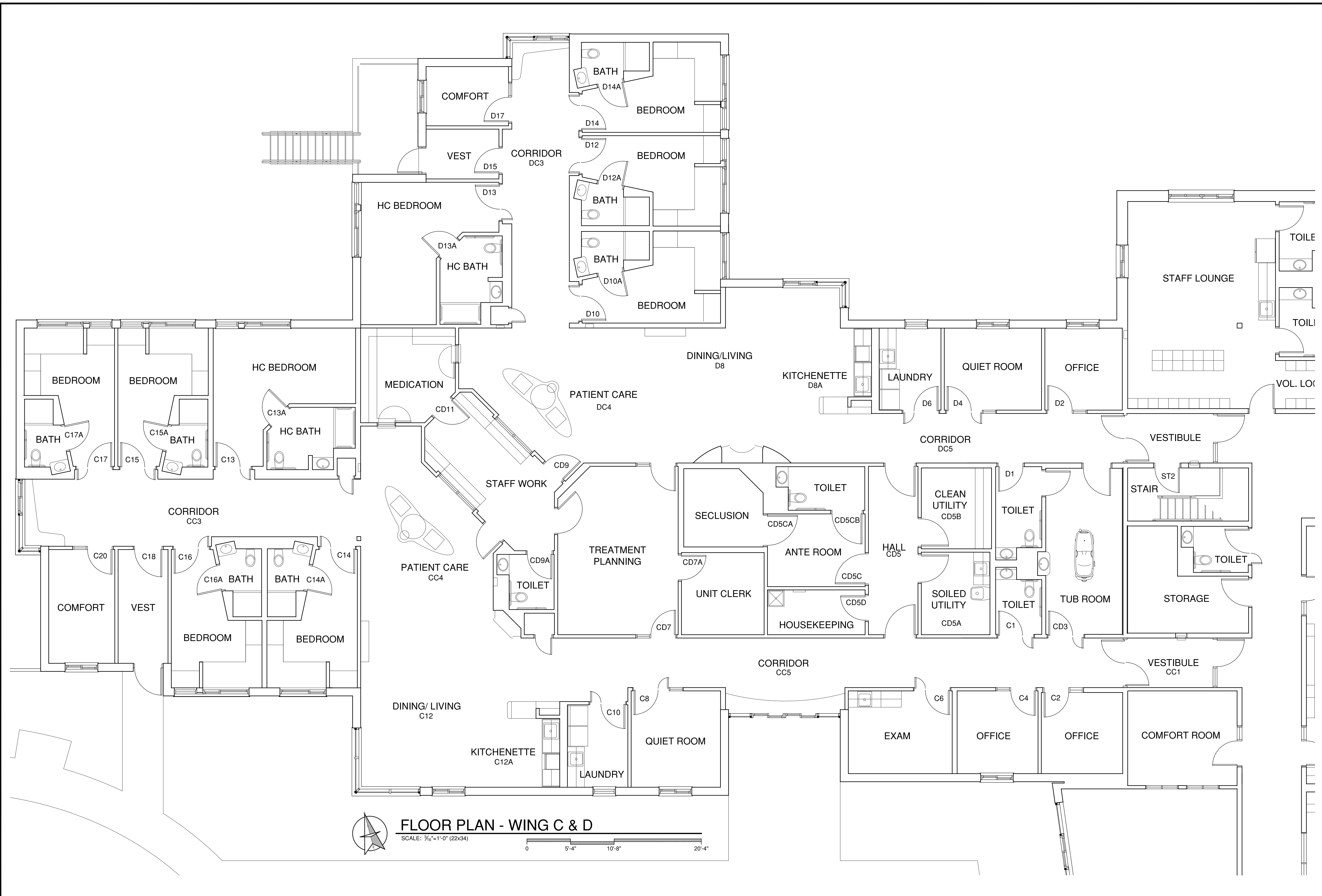
SK-2



FIRST FLOOR PLAN

SCALE: 1/16"=1'-0" (22x34)

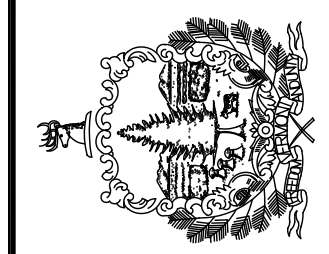




FLOOR PLAN - WING C & D
 SCALE: 3/16"=1'-0" (22x34)



STATE OF VERMONT
 Department of Buildings
 and General Services
 Agency of Administration
 Montpelier, Vermont



VERMONT PSYCHIATRIC CARE HOSPITAL
 BERLIN, VERMONT

REVISION

FLOOR PLAN
 WING C & D

ENG. JOB NO:
 BLDG. NO: 06091
 DATE: APRIL 2023
 SCALE: AS NOTED
 DRAWN BY: MDB
 APPROVED BY:

SHEET NUMBER

SK-3