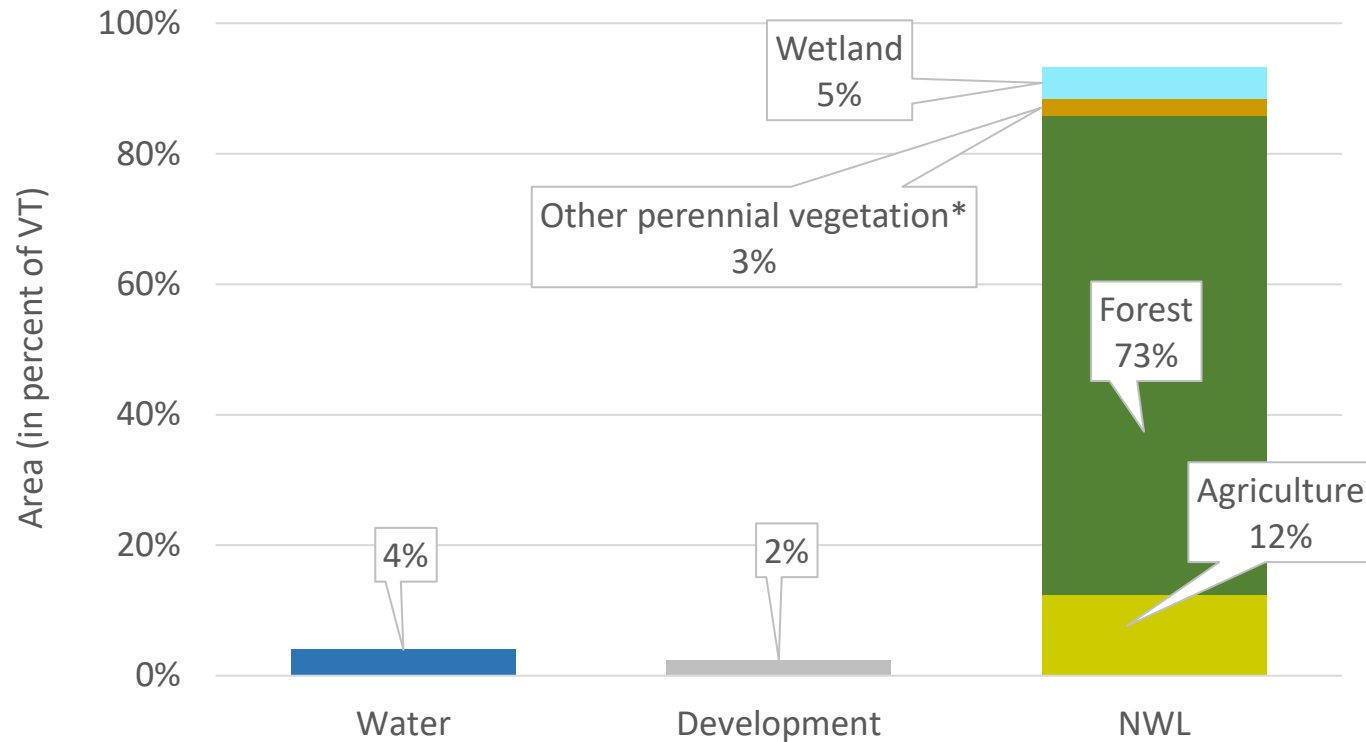


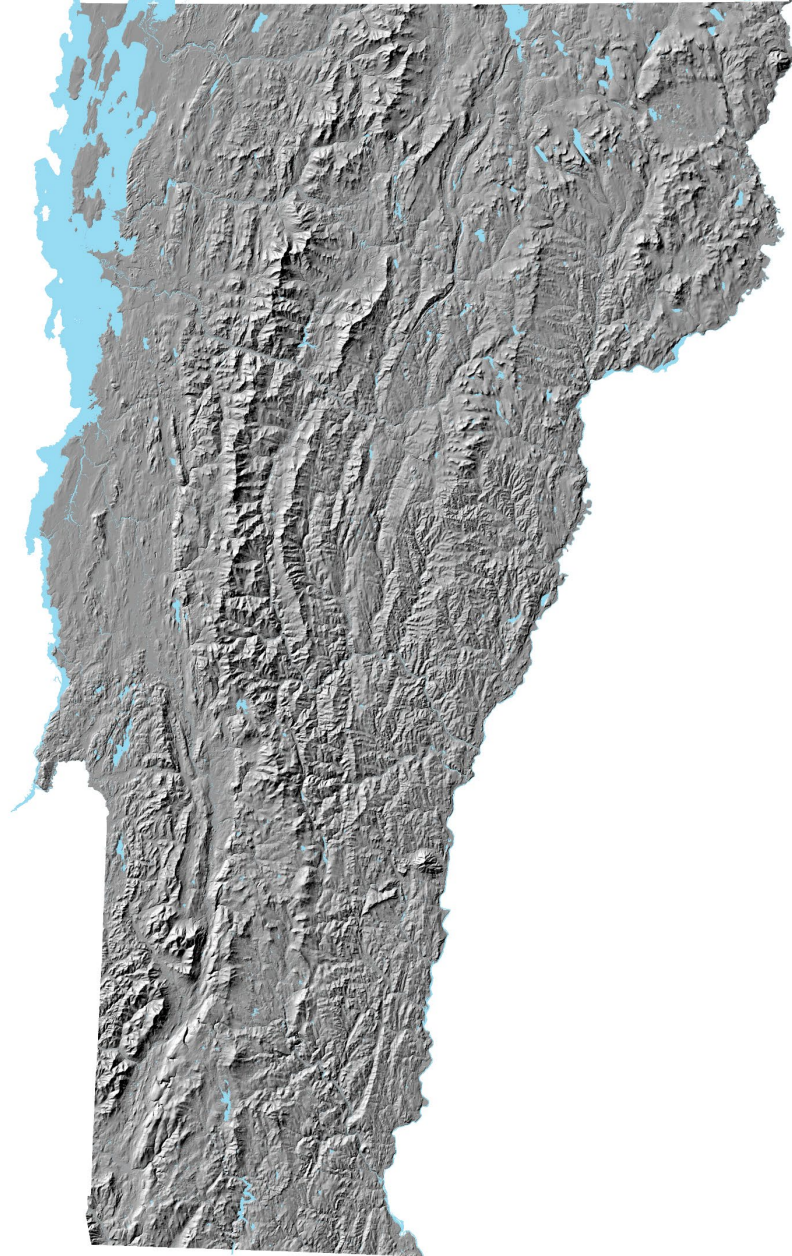
Agricultural Lands: Status and Trends

Ryan Patch
Agriculture Climate and Land Use Policy Manager
Vermont Agency of Agriculture, Food and Markets
Presentation to: House Committee on Agriculture, Food Resiliency, and Forestry
April 25, 2023

Natural & Working Lands (NWL) cover 94% of Vermont



*Other perennial vegetation includes grasslands, shrub/scrublands, and turf



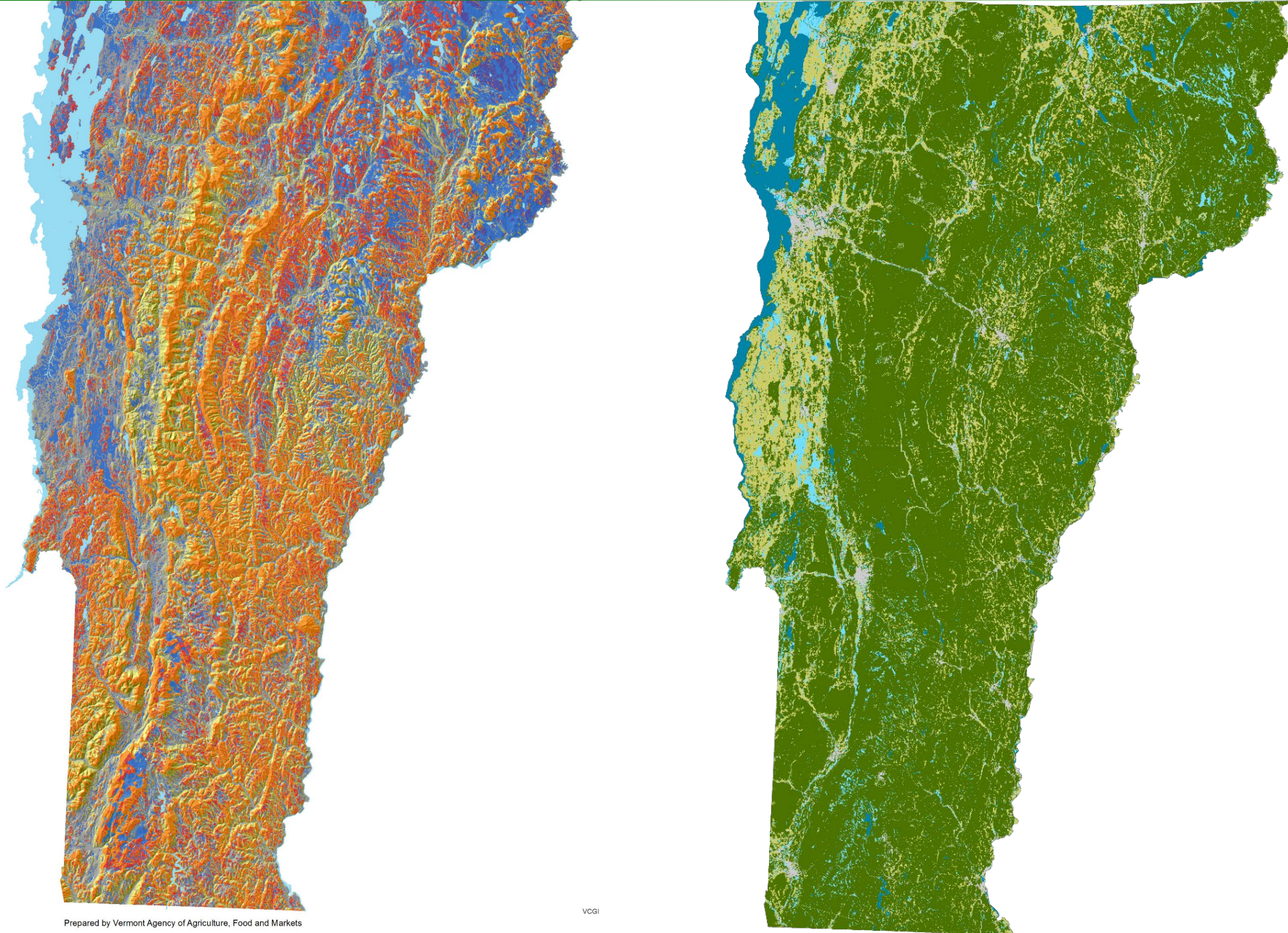
■ Mountainous



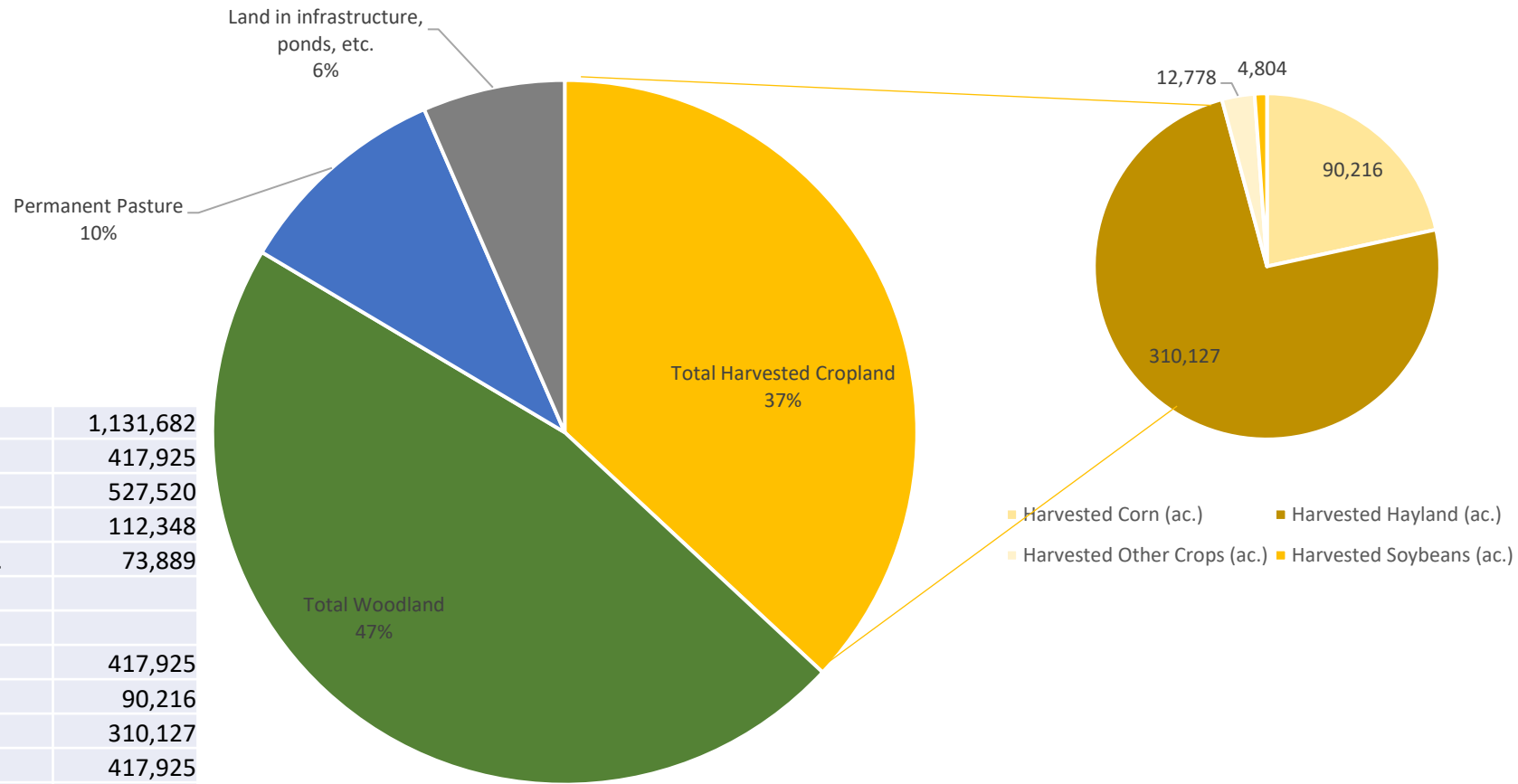
- Mountainous
- Steep (slope >15%)
- Shallow Depth to Bedrock (<20 in)



- Mountainous
- Steep (slope >15%)
- Shallow Depth to Bedrock (<20 in)
- Wet (wetlands & hydric soils)



Land managed by farms in Vermont, 2017



Land in Farms	1,131,682
Total Harvested Cropland	417,925
Total Woodland	527,520
Permanent Pasture	112,348
Land in infrastructure, ponds, etc.	73,889
Total Cropland Harvested	417,925
Total Corn in VT	90,216
Total Hayland in VT	310,127
Total Other in VT	417,925
Total Soybeans	4,804

Source: 2017 USDA NASS Ag Census

-32%

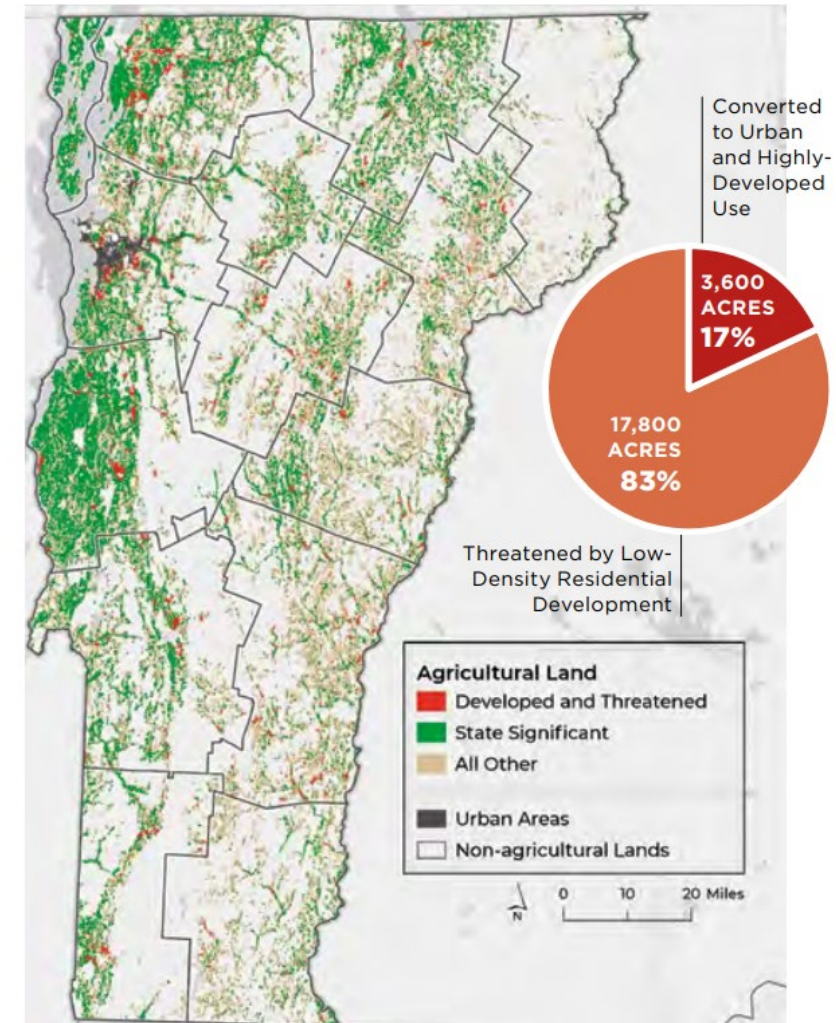
Percentage decrease in total cropland from 1987 to 2017

Since 1987, Vermont has lost
32% (or 228,290 ac.) of
cropland

Census Category	1987	2017
Farms	5,877	6,808
Acres Land Managed by Farms	1,407,868	1,193,437
Total Cropland	707,970	479,680

Trends 2001 - 2016

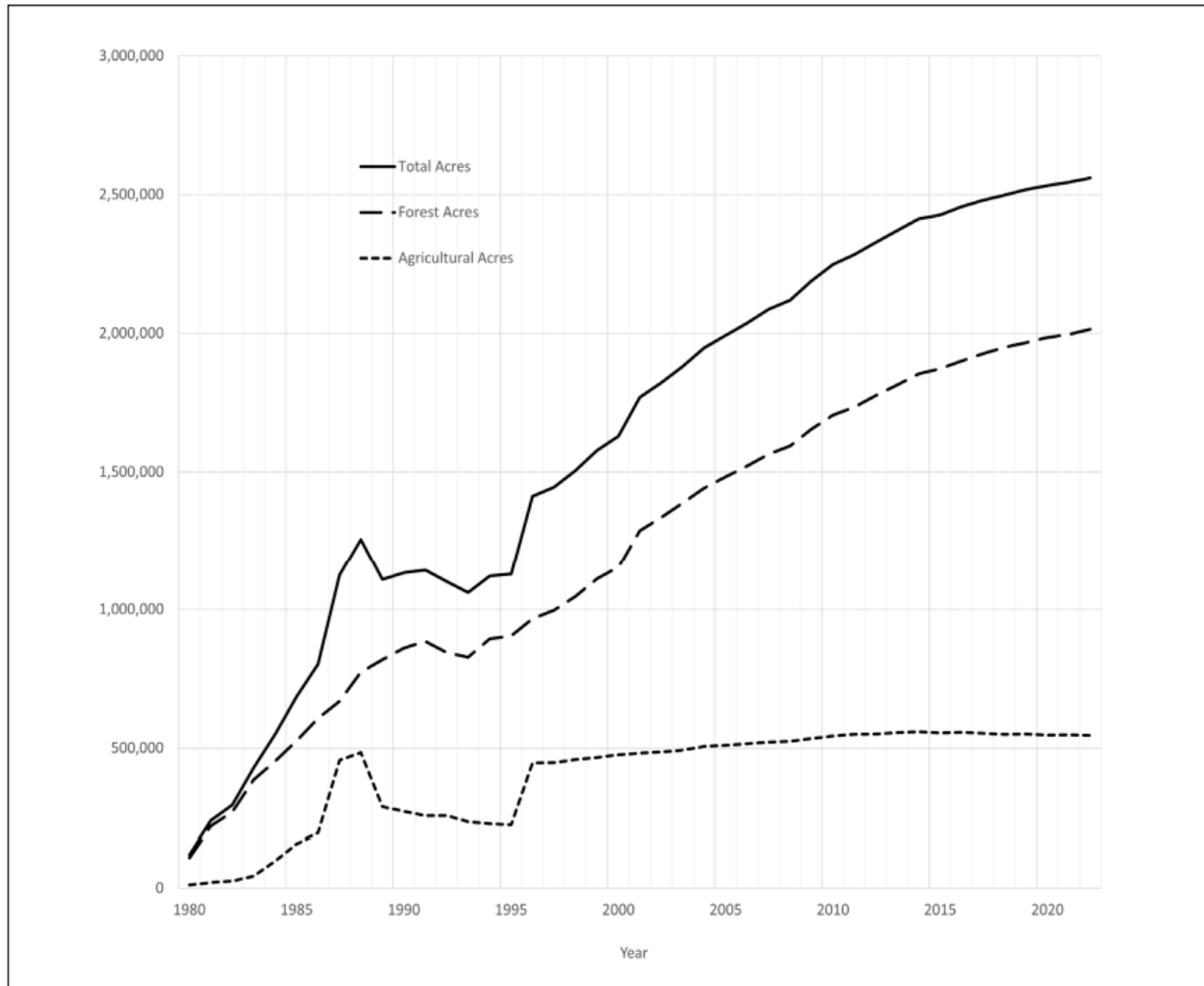
VERMONT



Source: 2017 USDA NASS Ag Census

Source: https://s30428.pcdn.co/wp-content/uploads/sites/2/2020/10/AFT_NE_FUT-10_14_20_rev.pdf

Figure 1: Acreage Enrolled in Current Use Program by Year



5,528 decrease in ag acres since 2012
238,010 increase in forest acres

Table 10: Annual Current Use Enrollment

Tax Year	Parcels	Owners	Agricultural Acres	Forest Acres	Total Acres
2022	19,535	15,954	545,477	2,014,163	2,559,641
2021	19,415	15,840	547,617	1,996,378	2,543,995
2020	19,258	15,669	547,019	1,984,714	2,531,733
2019	19,086	15,490	551,230	1,966,681	2,517,911
2018	18,910	15,307	549,319	1,949,198	2,498,517

Tax Year	Parcels	Owners	Agricultural Acres	Forest Acres	Total Acres
2017	18,723	15,147	553,372	1,926,499	2,479,871
2016	18,457	14,905	556,489	1,900,188	2,456,636
2015	18,154	14,653	554,078	1,872,070	2,426,149
2014	18,020	14,553	558,320	1,853,765	2,412,096
2013	17,647	14,246	555,234	1,814,585	2,369,819
2012	17,190	13,831	551,055	1,776,153	2,327,208

The underlying data for Figure 1 is included with the supplemental digital data provided with this report.

Ag Land Conservation Efforts

Farmland Conservation



CONSERVING VERMONT'S FUTURE



Agriculture plays a major role in shaping Vermont's economy, landscape, and rural character. The Vermont Farmland Conservation Program is focused on retaining the state's quality agricultural land base in strong farming regions of the state. Because of the Board's investment in conservation easements, matched by funding from the Natural Resources Conservation Service, some of Vermont's most productive farmland will remain undeveloped and available for farming in the future.

Since 1987, more 164,000 acres of agricultural land on 765 farms have been conserved with VHCB funds matched with federal funds provided through the Natural Resources Conservation Service.

Source: <https://vhcb.org/our-programs/conservation/farmland-conservation>

Source: https://www.nrcs.usda.gov/sites/default/files/2022-11/ALE_magazine_1.pdf



Agricultural Conservation Easement Program Agricultural Land Easements

Natural

Act 250 Criterion 9(B) Primary Agricultural Soils



Quantitative Summary Impacts and Mitigation 2015-2022



REPORT ON THE VERMONT AGENCY OF AGRICULTURE, FOOD & MARKETS' ASSESSMENT OF AGENCY EXPENSES FOR PUBLIC UTILITY COMMISSION SECTION 248 PROCEEDINGS SFY2022

Prepared for the Vermont General Assembly in Accordance with
30 V.S.A. § 21(e)

Submitted to the
Senate Committee on Natural Resources and Energy
House Committee on Environment and Energy
Senate Committee on Agriculture
House Committee on Agriculture, Food Resiliency, and Forestry

By the
Vermont Agency of Agriculture, Food and Markets