

Statehouse Legislative Advisory Committee

2022 SESSION SPACE USE OPTIONS

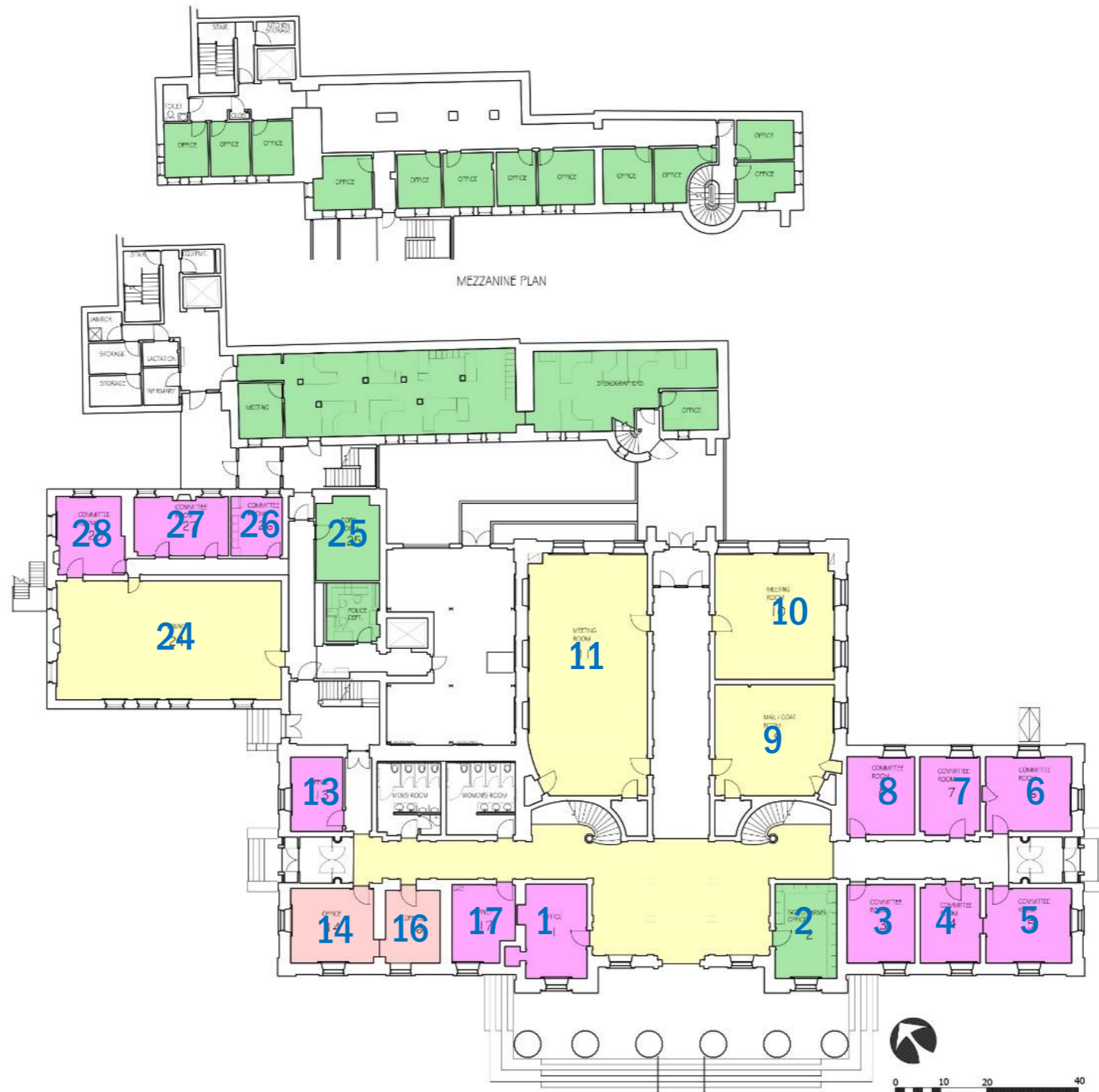
EXISTING USES AND ENHANCED AIRFLOW OCCUPANCY #'S

July 13, 2021



EXISTING SPACE USES

1ST FLOOR & MEZZANINE



EXISTING SPACE USES

1ST FLOOR & MEZZANINE
W/ENHANCED AIRFLOW

SPACE USE KEY

- LEG OPS
- HOUSE
- SENATE
- SHARED
- AOA

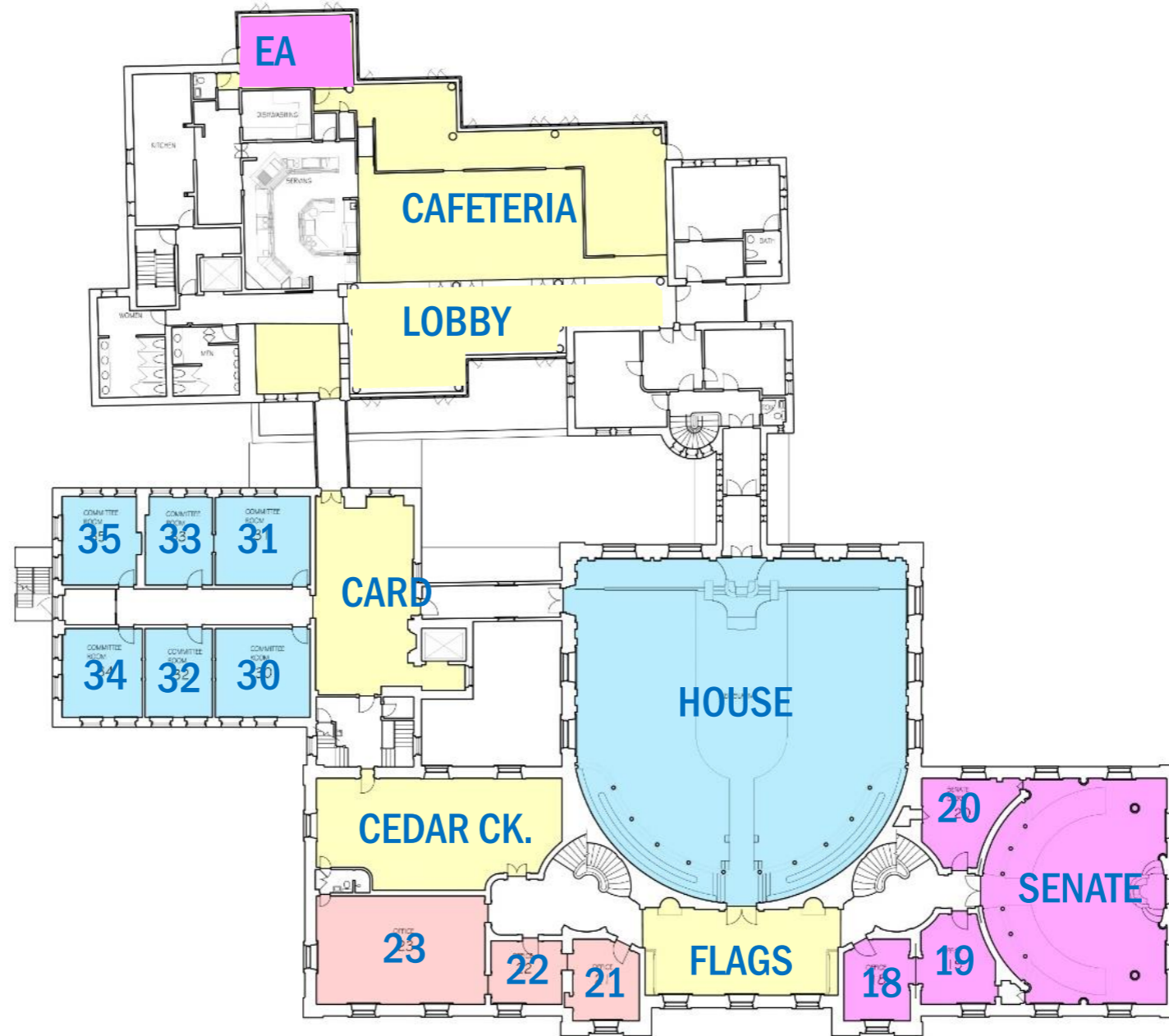
SEATING CAPACITY #
BASED ON AIR FLOW

SEATING CAPACITY #
BASED ON OVER-RIDES



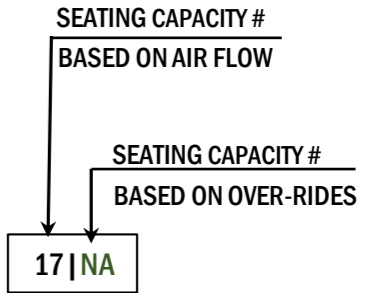
EXISTING SPACE USES

2ND FLOOR



SPACE USE KEY

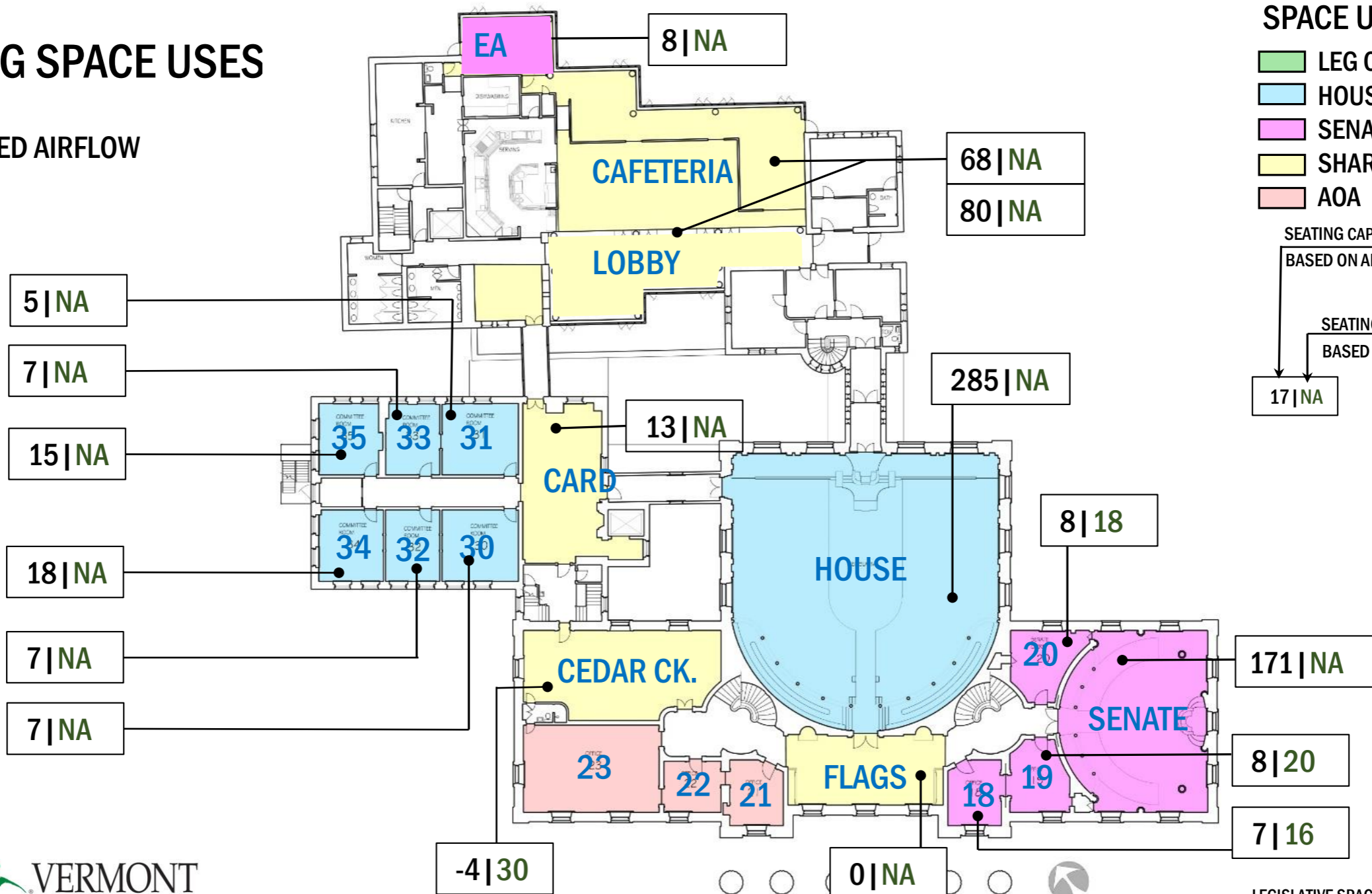
- LEG OPS
- HOUSE
- SENATE
- SHARED
- AOA



EXISTING SPACE USES

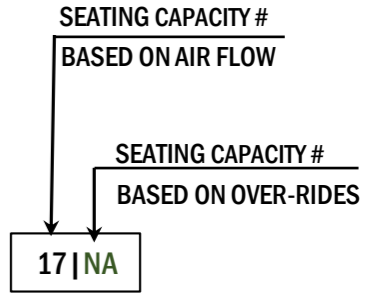
2ND FLOOR

W/ENHANCED AIRFLOW



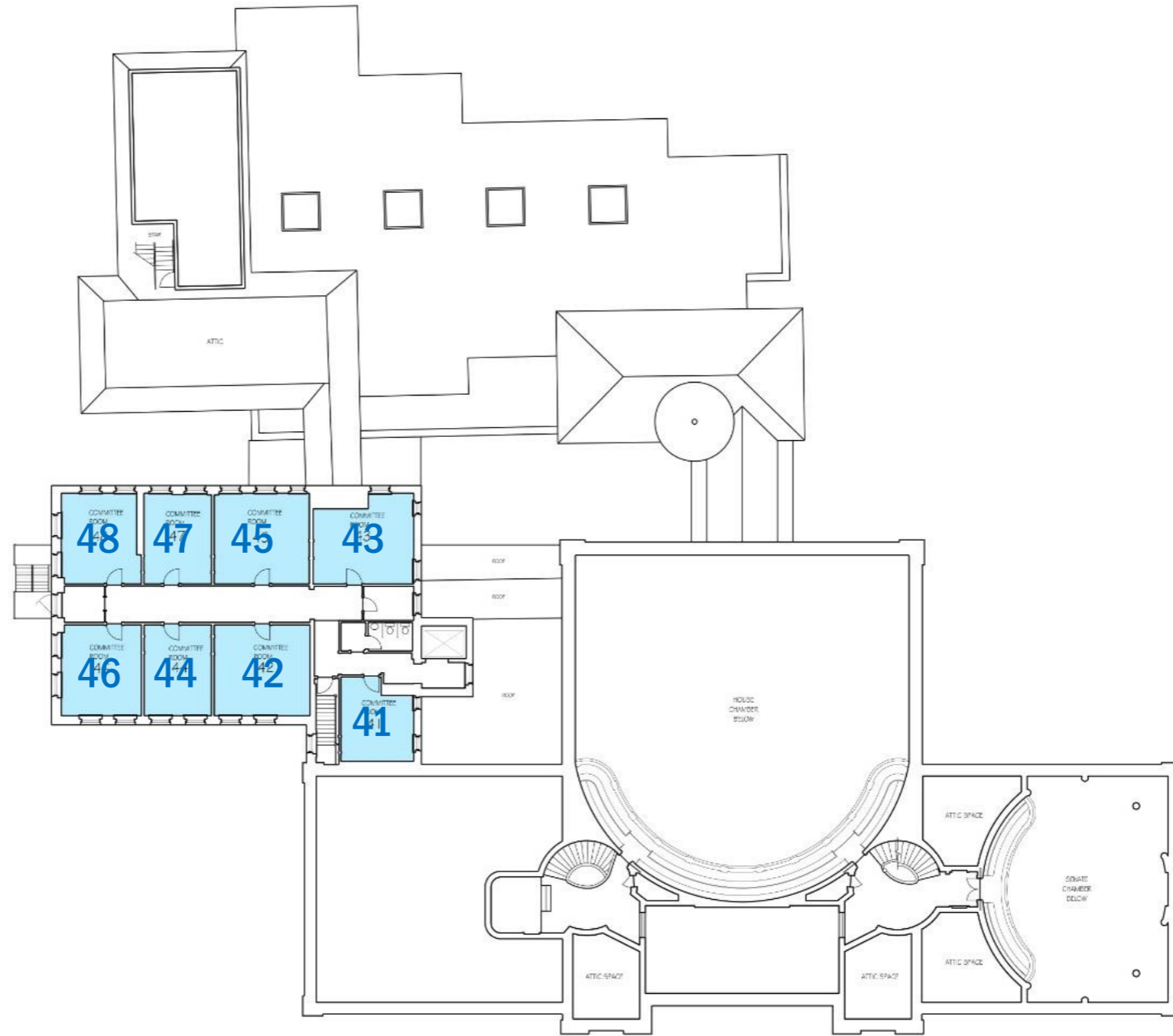
SPACE USE KEY

- LEG OPS
- HOUSE
- SENATE
- SHARED
- AOA



EXISTING SPACE USES

3RD FLOOR



SPACE USE KEY

- LEG OPS
- HOUSE
- SENATE
- SHARED
- AOA

SEATING CAPACITY #
BASED ON AIR FLOW

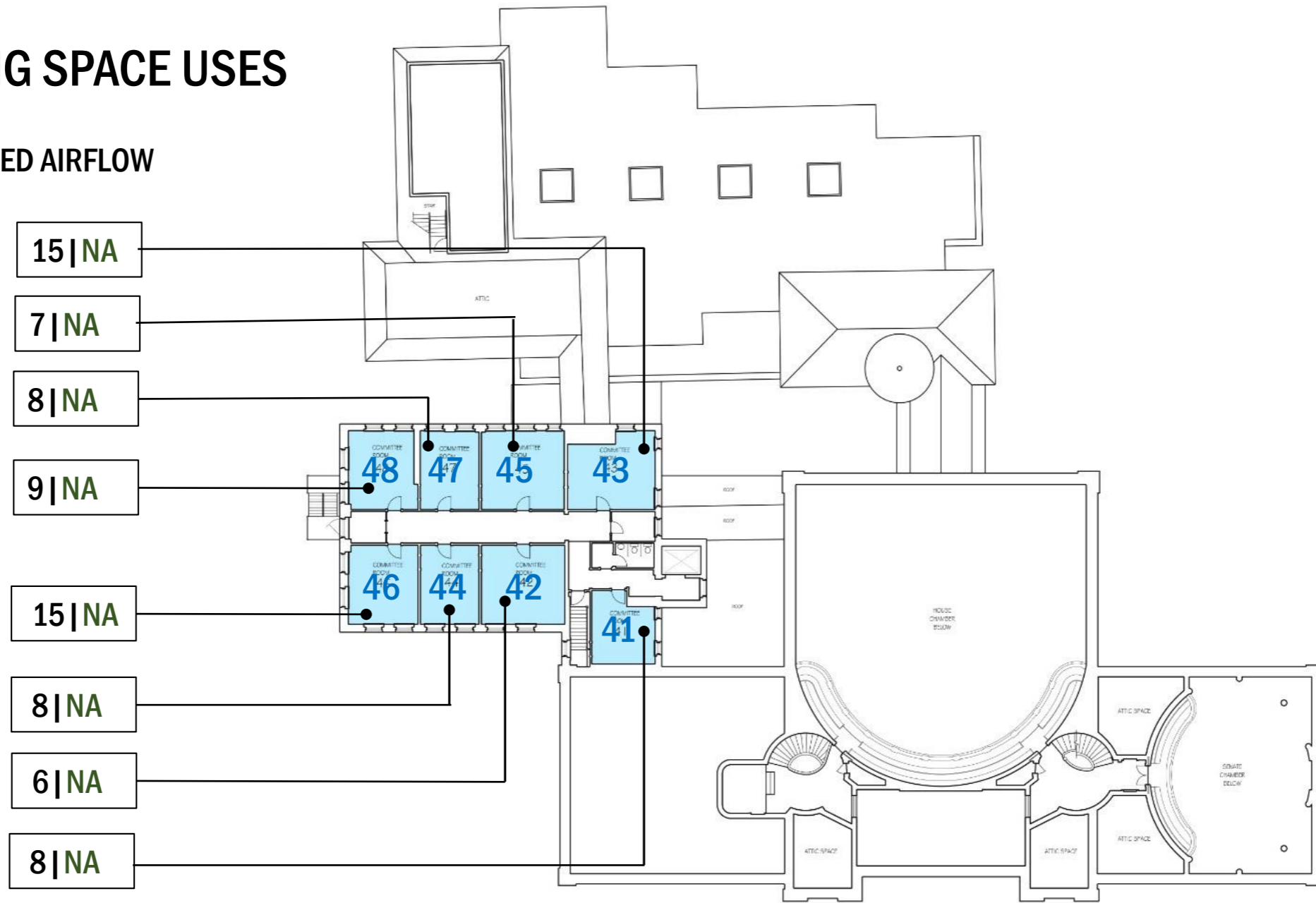
SEATING CAPACITY #
BASED ON OVER-RIDES

17 | NA

EXISTING SPACE USES

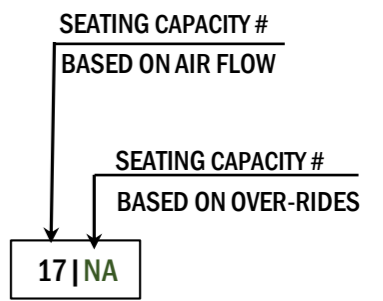
3RD FLOOR

W/ENHANCED AIRFLOW



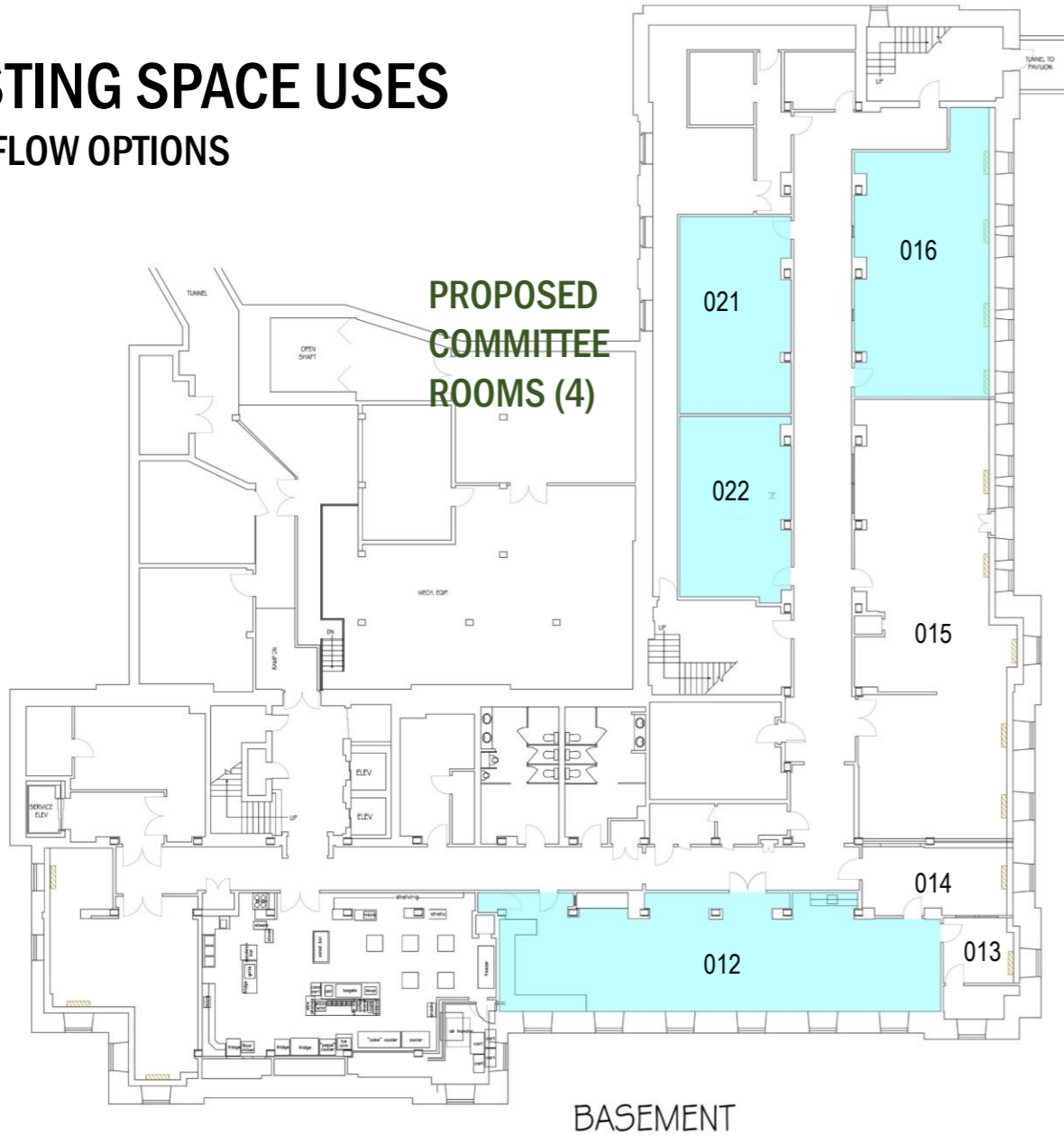
SPACE USE KEY

- LEG OPS
- HOUSE
- SENATE
- SHARED
- AOA

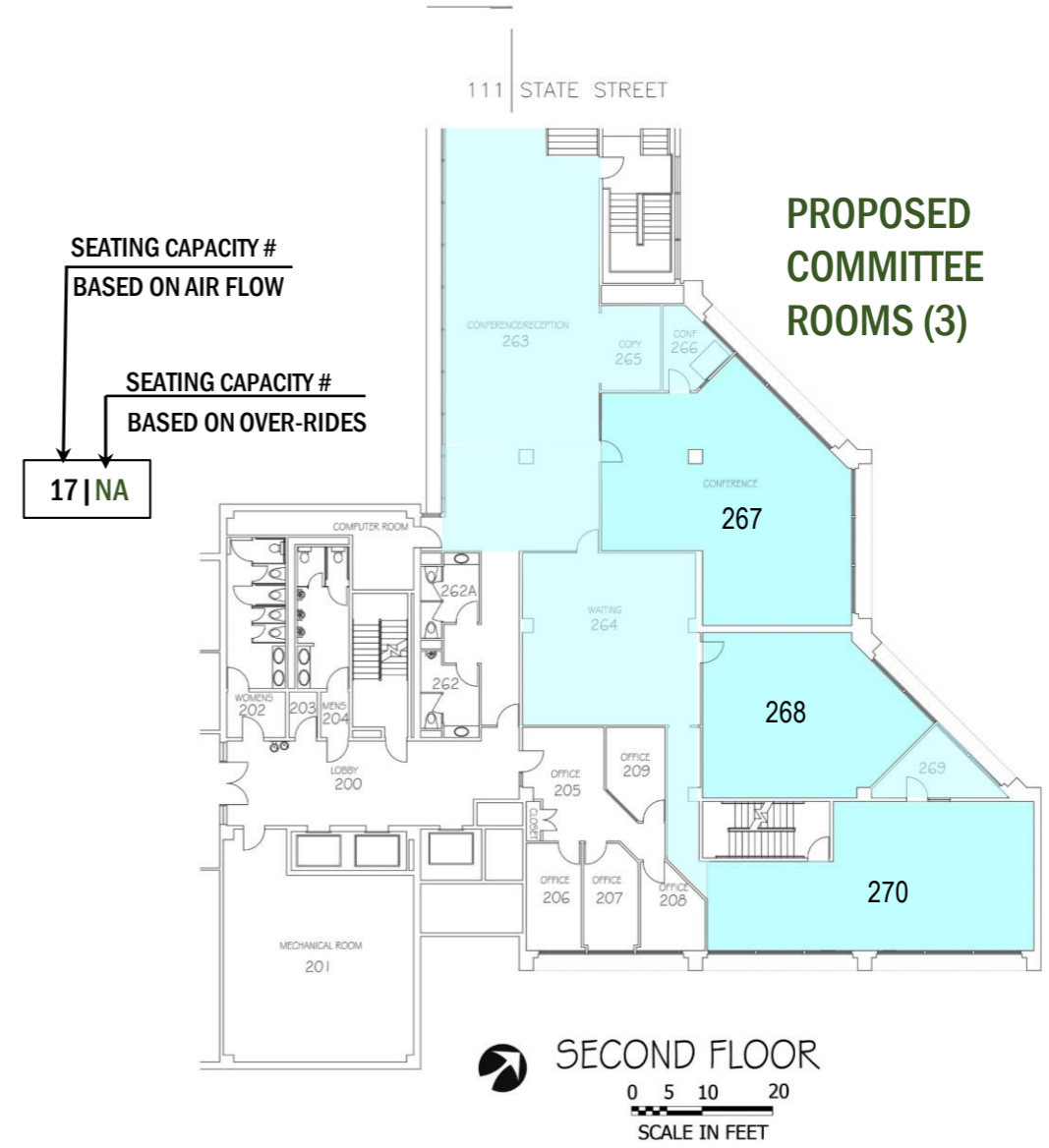


EXISTING SPACE USES

OVERFLOW OPTIONS



133 STATE STREET



109 STATE STREET LINK

EXISTING SPACE USES

OVERFLOW OPTIONS
W/ ENHANCED AIRFLOW

