

RG and PG Elements in Expanded Gambling

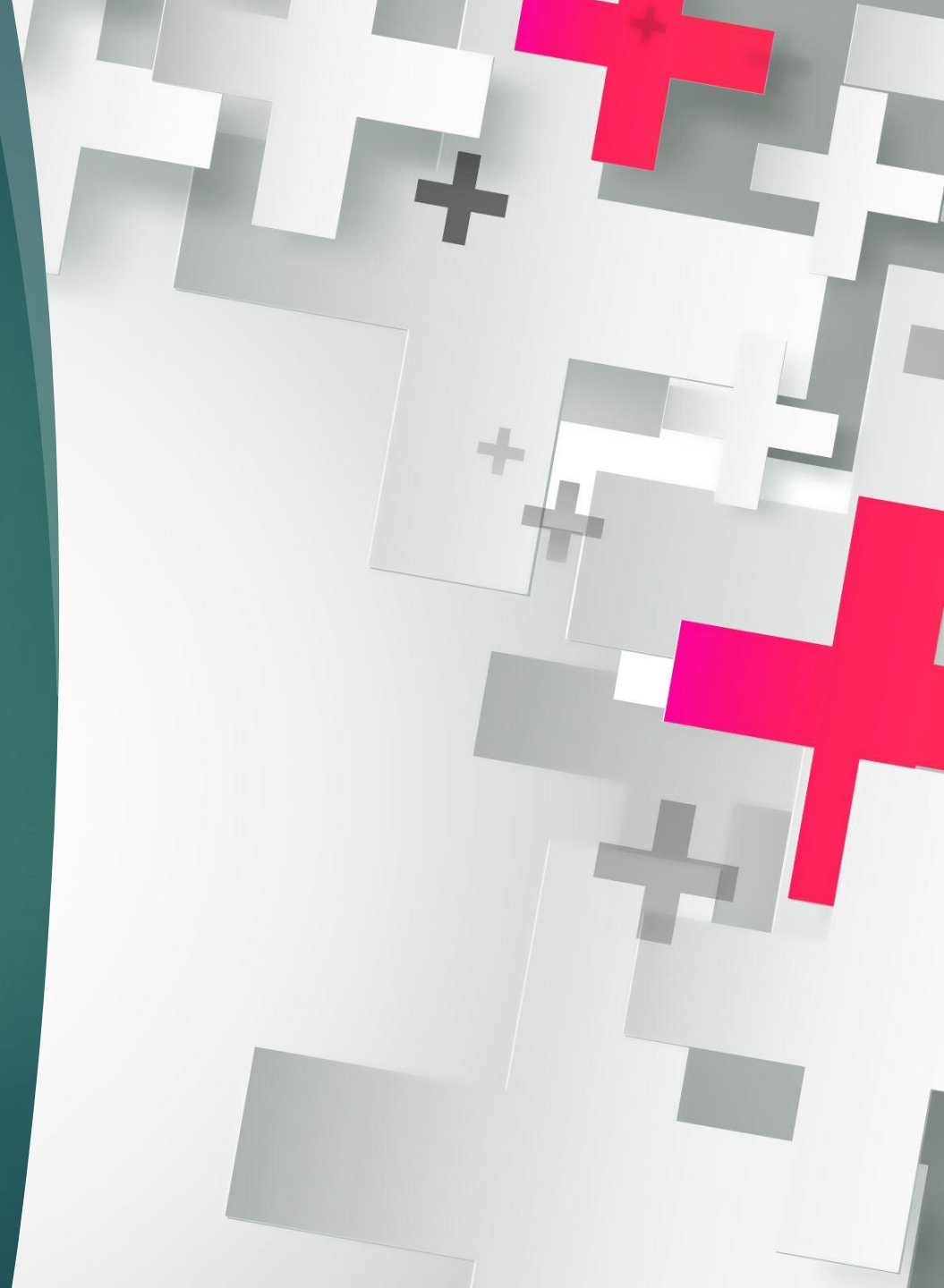
MARLENE D. WARNER

MARLENE@MACGH.ORG

MASSACHUSETTS COUNCIL ON GAMING AND
HEALTH (MACGH)

VT SPORTS BETTING STUDY COMMITTEE

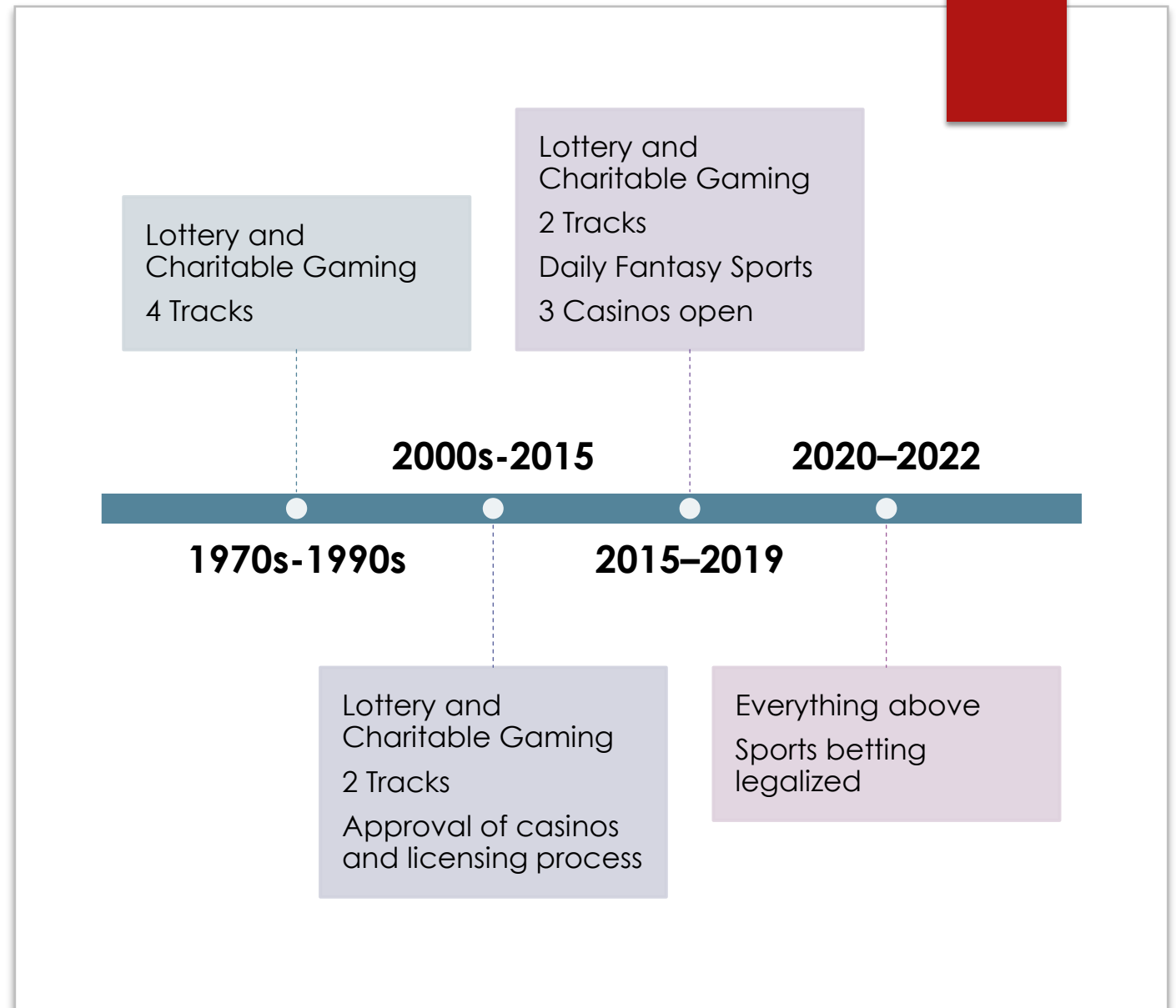
NOVEMBER 15, 2022



MACGH

- ▶ Established in 1983 by Tom Cummings
- ▶ Private, nonprofit, public health agency
- ▶ Neutral on Legalized Gambling
- ▶ Primarily funded by state contracts
- ▶ Operates out of Mass, but works in other states and countries
- ▶ Provides services and advocacy from primary prevention through long-term recovery

Massachusetts Gambling



Mass. RG and PG

- ▶ Budget line item from unclaimed prize winnings
- ▶ Prioritized funding from Racing Fund
- ▶ Assessment and % of tax on GGR go to Public Health Trust Fund

- ▶ Mass. DPH/OPGS
 - ▶ Primary Prevention
 - ▶ Treatment
 - ▶ Recovery

- ▶ Mass. Gaming Commission
 - ▶ Secondary and Tertiary Prevention
 - ▶ Intervention
 - ▶ Recovery

State Considerations

- Analysis of Current Services/Resources
 - ▶ What needs to be improved prior to expansion? Key stakeholders assembled?
- Gambling Regulator that has prioritized RG and PG
 - ▶ To whom do they report? Is there a mandate in this area?
- Funding for Prevention through Long-term Recovery Services
 - ▶ Is it in one fund? Does it come from taxes on GGR? How can it best represent both general population and community considerations?
- Commitment to Research and Efficacy of PG/RG Services
 - Annual or long-term commitment? How will data be used?

Operator Considerations

- RG Committee/Staffing
- RG Policies and Procedures
- KYC/Age Verification
- RG Messaging—Statewide
- Advertising Guidelines/Code
- Game Design Parameters
- Limit Setting Tools
- Informed-Decision Making Tools
- Harm-Reduction Tools
- Voluntary-Self Exclusion and Exclusion
- Problem Gambling Resources
- Financial Considerations and Payment Processing
- Venue/Environment