

NEW YORK

NEW HAMPSHIRE

MASSACHUSETTS

### VTrans Districts with Extensions

- Regional Boundaries
- District Headquarters

### Plow Routes

- D1
- D2
- D3
- D4
- D5
- D6
- D7
- D8
- D9

### Maintenance Districts

- 1 - Bennington
- 2 - Dummerston
- 3 - Rutland
- 4 - White River Junction
- 5 - Colchester
- 6 - Berlin / HQ
- 7 - St. Johnsbury
- 8 - St. Albans
- 9 - Derby

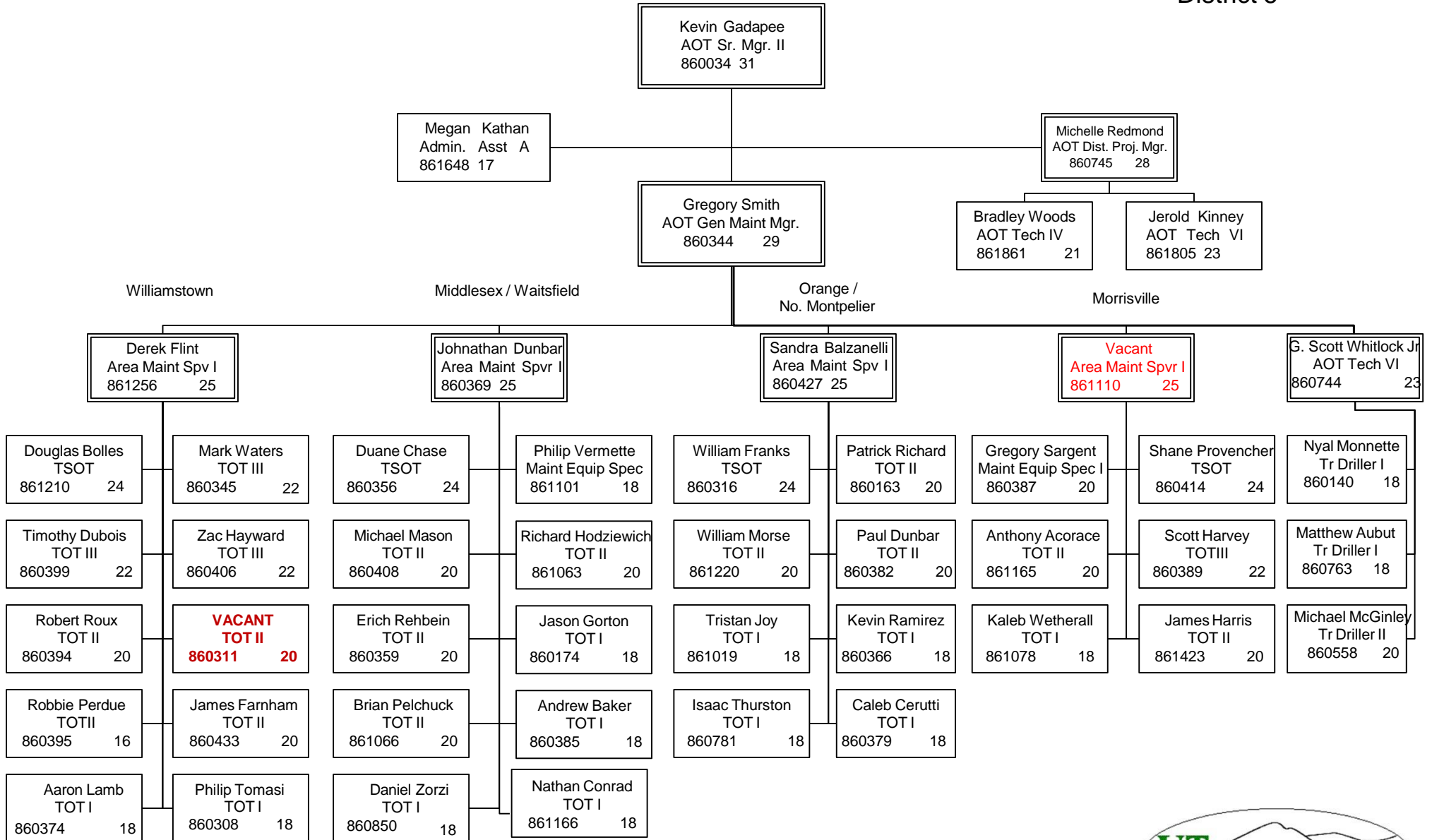
# Towns Served By District 6

- Barre City
- Barry Town
- Berlin
- Brookfield
- Cabot
- Calais
- Duxbury
- E. Montpelier
- Elmore
- Fayston
- Marshfield
- Middlesex
- Montpelier
- Moretown
- Morristown
- Northfield
- Orange
- Plainfield
- Roxbury
- Stowe
- Waitsfield
- Warren
- Washington
- Waterbury
- Williamstown
- Wolcott
- Woodbury
- Worcester

# Agency of Transportation

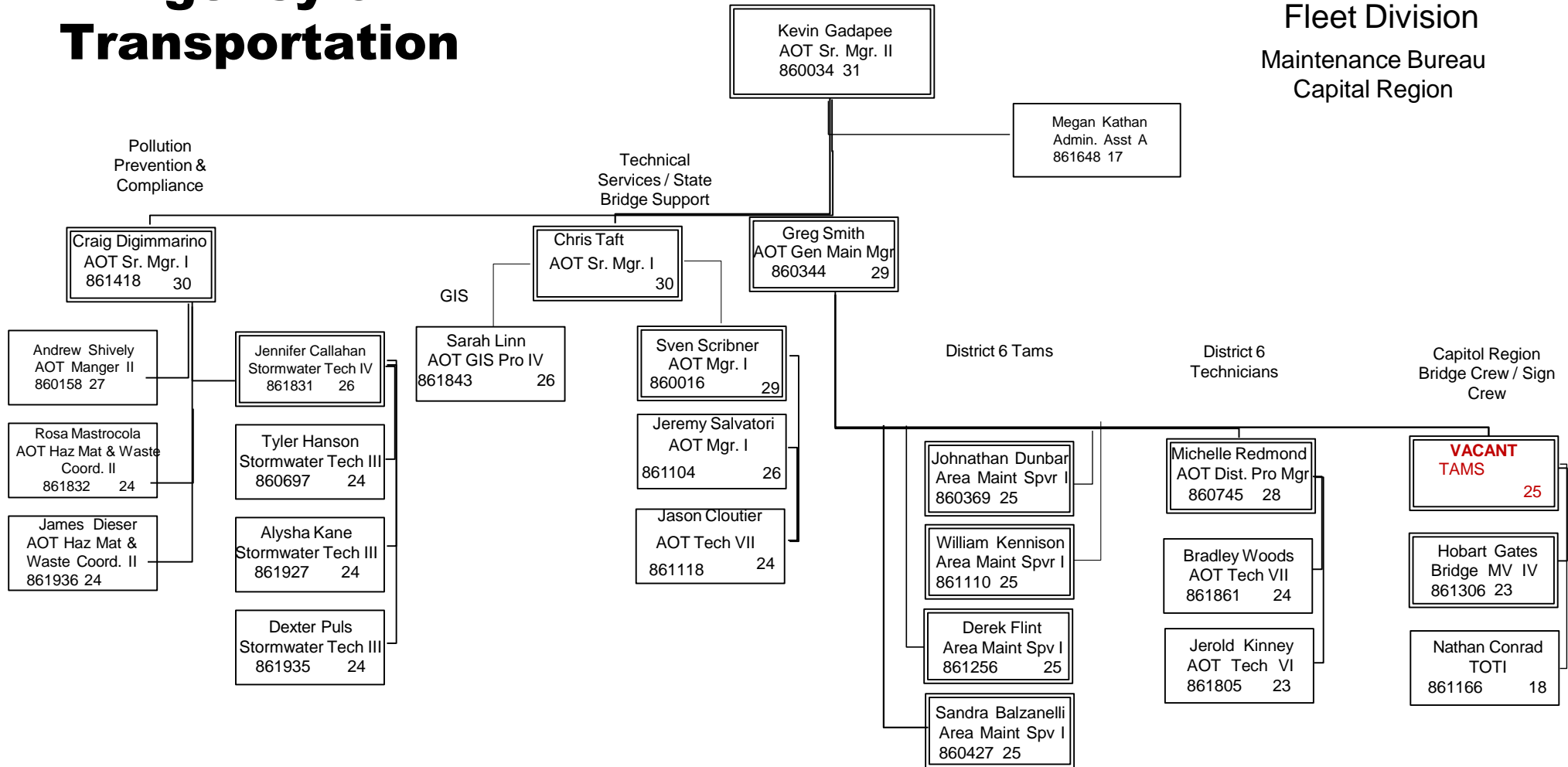
## District Maintenance & Fleet Division

### District 6



# Agency of Transportation

## District Maintenance & Fleet Division Maintenance Bureau Capital Region





# VERMONT AGENCY OF TRANSPORTATION

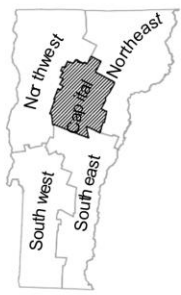
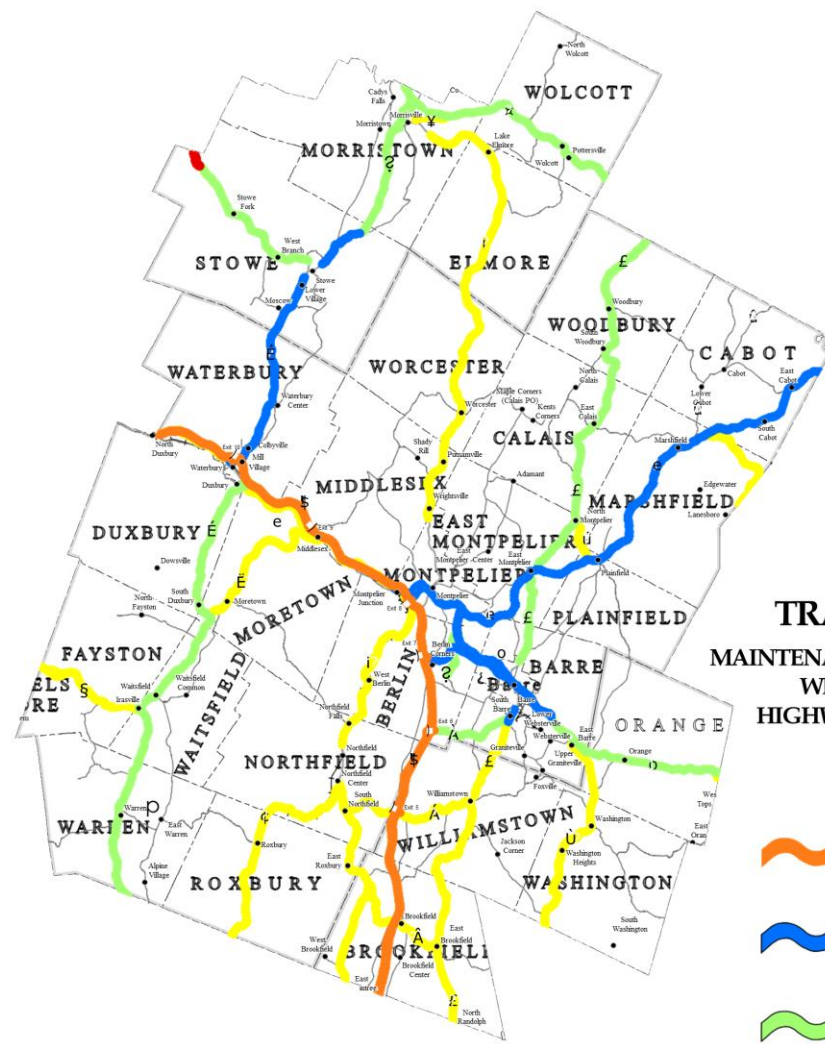
## MAINTENANCE & OPERATIONS BUREAU WINTER MAINTENANCE HIGHWAY CORRIDOR PRIORITY

### LEVEL OF SERVICE

-  FULL WIDTH BARE PAVEMENT TRAVEL LANES ON THESE ROADS BEFORE ALL OTHERS AS SOON AS PRACTICAL FOLLOWING STORM
-  FULL WIDTH BARE PAVEMENT AS SOON AS PRACTICAL FOLLOWING STORM
-  FULL WIDTH BARE PAVEMENT AS SOON AS PRACTICAL NEXT WORKING DAY FOLLOWING STORM
-  1/3 BARE PAVEMENT AS SOON AS PRACTICAL NEXT WORKING DAY FOLLOWING STORM
-  ROAD CLOSED IN WINTER

LOW SALT AND NO SALT ZONE ROADWAYS  
MAY BE SNOW COVERED AND ICY

MAP PRODUCED BY THE  
VT AGENCY OF TRANSPORTATION  
JANUARY 2022



Region Index