

S.148

Environmental Justice in Vermont

Transportation

MICHELE BOOMHOWER,

FEBRUARY 10, 2022

DIRECTOR OF POLICY, PLANNING AND INTERMODAL DEVELOPMENT

PRESENTATION TO SENATE NATURAL RESOURCES AND ENERGY





Equity, Inclusion
and
Environmental
Justice at AOT

AOT PUBLIC ENGAGEMENT: *AOT ENGAGING THE PUBLIC GUIDANCE (2017)*

TITLE VI PROGRAM INCLUDING LIMITED ENGLISH PROFICIENCY (LEP)

DEPARTMENT OF MOTOR VEHICLES (DMV) EQUITABLE ACCESS

PUBLIC TRANSIT PROGRAMMING FOR HEALTH CARE ACCESS

EMPLOYMENT DIVERSITY IN HIGHWAY CONSTRUCTION (EDHC)

DISADVANTAGED BUSINESS ENTERPRISE AND SMALL BUSINESS PROGRAMS

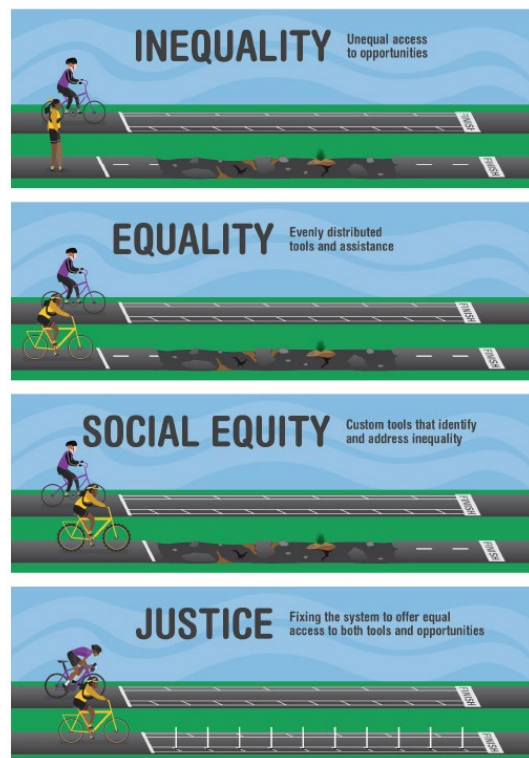
DIVERSITY, EQUITY AND INCLUSION AT AOT AND WITH CONTRACTORS AND SUBRECIPIENTS

VTRANS TRAINING CENTER (VTTC): EMPLOYEE TRAINING ON EQUITY, DIVERSITY & INCLUSION; NEW EMPLOYEE ORIENTATION

CURRENT EFFORT: TRANSPORTATION EQUITY FRAMEWORK & EQUITY IN PROJECT PRIORITIZATION



Presidential Executive Order 14008 (01/2021)



EQUITY VISUALIZED

The image illustrates different terms related to a Social Equity framework. In the first frame, “Inequality” shows that not everyone faces the same path ahead or has the same resources. “Equality” shows that even when given the same tools, in this case a bicycle, the obstacles each person faces are different. “Social Equity” recognizes inequalities, in this case a more obstructed path, and creates custom solutions—in this case, a bicycle with different tread designed to handle the terrain—but still the obstacles are present. “Social Equity” is on the path to “Justice”, which is the final goal of Social Equity, taking away the inequalities and creating the same opportunities for all.

State of Vermont Act No. 55 of 2021 (Transportation Equity Framework)

Interim guidance - <https://www.whitehouse.gov/wp-content/uploads/2021/07/M-21-28.pdf>

UPDATE: Transportation Equity Framework



PREPARED FOR

VERMONT AGENCY OF TRANSPORTATION -
POLICY, PLANNING AND
INTERMODAL DEVELOPMENT DIVISION (PPAID)

SUBMITTED BY



55 RAILROAD ROW
WHITE RIVER JUNCTION, VT 05001
802.295.4999
rsginc.com

IN COOPERATION WITH:

EBP | TOOLE DESIGN GROUP, LLC |
CHRIS COLE CONSULTING, LLC |
RIGHTS AND DEMOCRACY
INSTITUTE



VT Agency of Transportation Equity Framework

- Background and Context Setting: What does transportation equity look like? What is the state of transportation equity in Vermont?
- Task 2: Current Policies, Guidance, and Best Practices
- Task 3: Input from Vermonters
- Task 4: Equity Framework Structure – Gap and Needs Analysis
- Task 5: Data and Tools
- Task 6: Recommendations and Implementation Plan

Equity Framework Recommendations and Implementation

VISION	VISION STATEMENT (TO BE DEVELOPED)					
Goals	Inclusive Engagement		Equitable Investment and Action		Equitable Outcomes	
Objectives	Accurate Population Representation	Equitable Access to Decision-Making	Needs Fulfillment	Service Provision	Prioritization Process	Ongoing Performance Management
Actions	Recommend census or public datasets or develop custom dashboards	Develop robust and representative approaches to public engagement	Clarify set of performance standards to develop existing and historical gaps	Accessibility and equity audits	Develop scoring and weighting	Annual reporting on where and how much investment occurs to what population of concern
	Periodically validate accuracy of publicly available datasets	Maintain records and compare voices heard to those not explicitly heard	Create a transparent mapping or list of inequities and needs (historical, current, and forecast)	Funding resiliency and stability	Transparency in scoring and participation	Long-range planning informed from audits of past investment strategies
		Accessibility and equity audits				Develop long-range tracking of success

Equity Framework Timeline

Fall 2021 – RFP and consultant selection

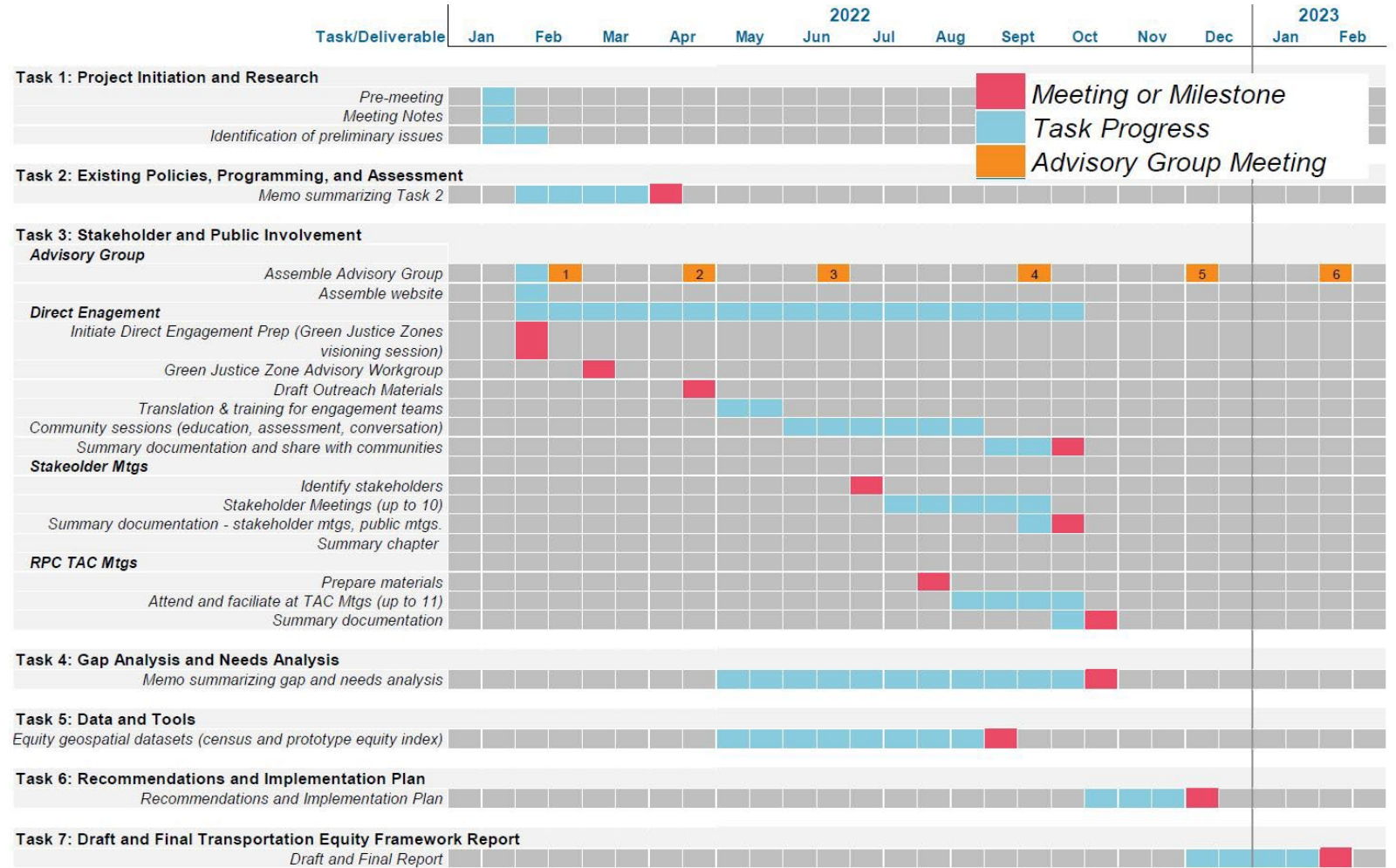
January 2022 - Kickoff

February - First Advisory Group Meeting

May thru September –
Community outreach,
Stakeholder engagement and
RPC TAC Meetings

October thru December –
Recommendations and
Implementation Plan

February 2023 – Delivery of
Final Transportation Equity
Framework Report





FINDINGS

CUMULATIVE ENVIRONMENTAL BURDEN AND BENEFITS

COMMUNITY ENGAGEMENT PLAN

TITLE VI COMPLIANCE

INVESTMENTS AND REPORTING

COUNCILS

RESOURCES

S.148

Questions/ Comments?

Contact

Michele Boomhower, AOT Division Director Policy, Planning & Intermodal Development

Michele.Boomhower@vermont.gov

(802) 505-3480