

# Residential Oversight and Child Protection

---

April 16, 2021

Jennifer Benedict, RLSI Director

Jennifer Myka, DCF General Counsel

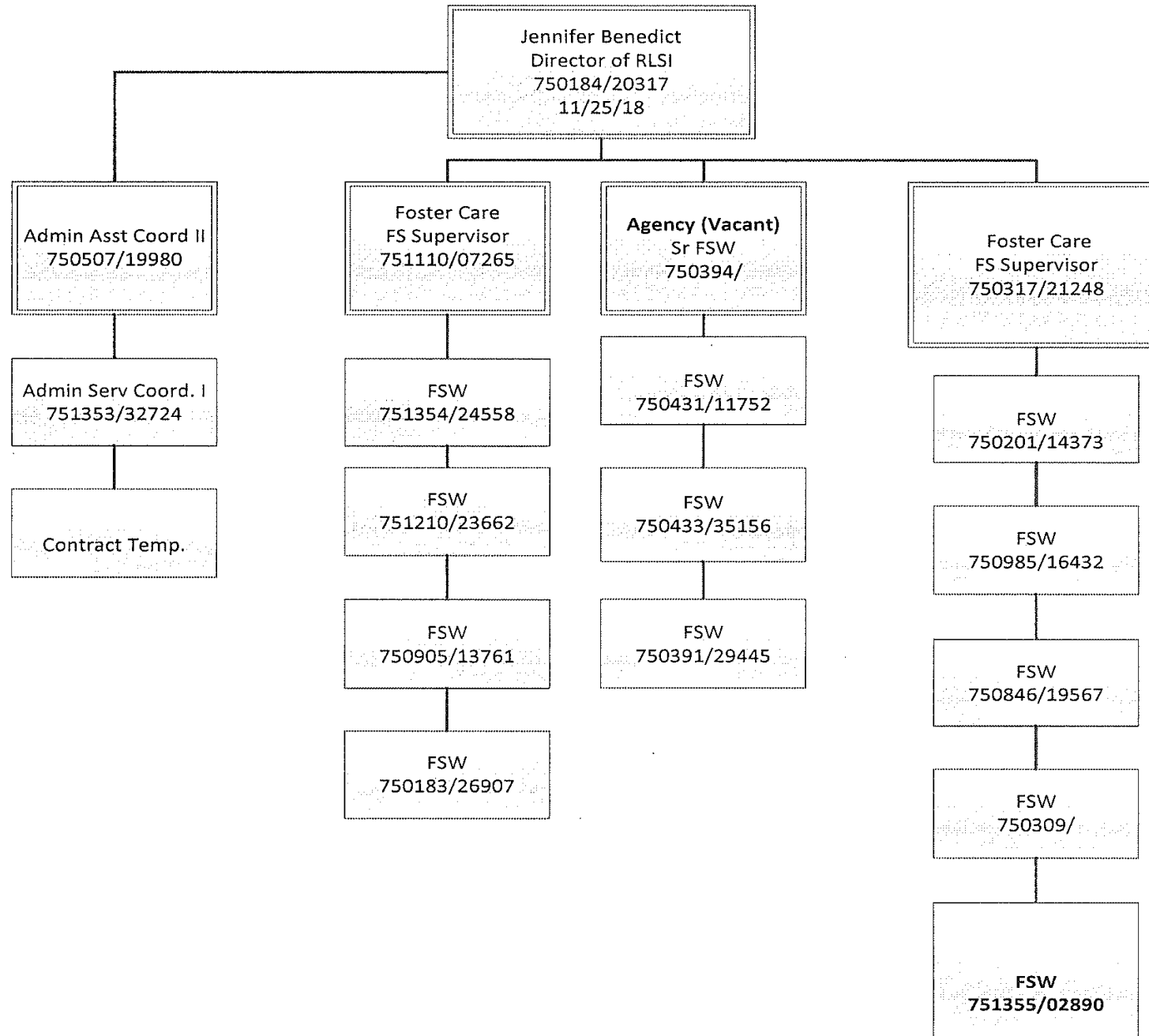


# Residential Licensing and Special Investigations

Two functions:

- License and Regulate:
  - Residential treatment programs
  - Foster/kin homes
  - Child placing agencies
  - Commissioner designated shelters (for youth)
- Special Investigations:
  - Child safety interventions (assessments and investigations)

# RLSI Org Chart



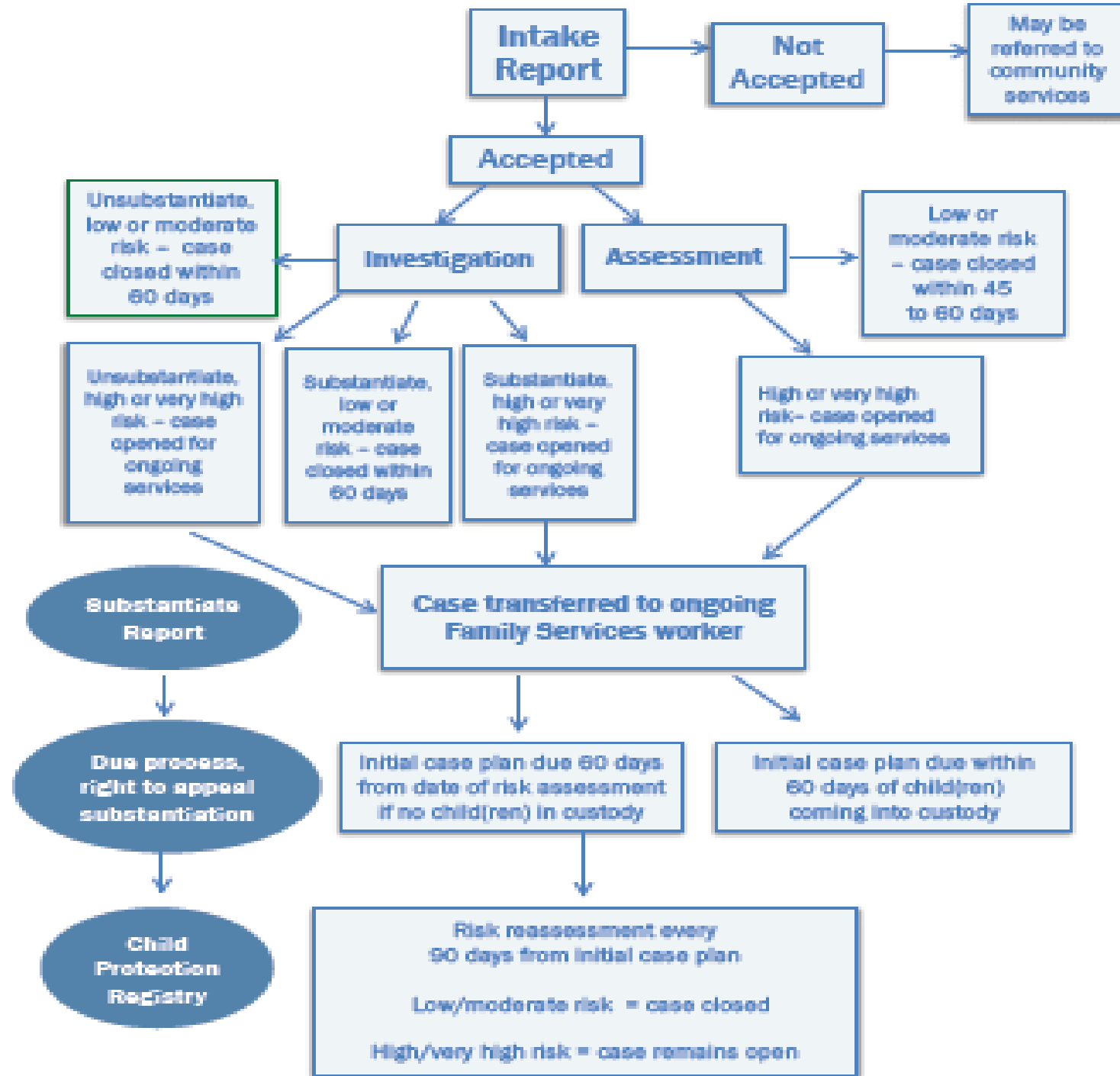
# RTP Application Process:

- Written application submitted which includes:
  - Program description and evaluation of services
  - Information on governing body, by-laws, meeting minutes
  - Org chart and qualifications of administrators, clinicians and staff
  - Direct care staff schedules
  - Program policies and procedures
  - De-escalation/restraint modalities
  - Fire inspection
- Site visit is scheduled and includes:
  - Meeting administrators and tour of space
  - Discussion of RTP regulations
  - Documentation review of policies, background checks, handbooks, etc.
- Decision is made with these possible outcomes:
  - Issue full license if in full compliance
  - Issue temporary license if in substantial compliance with timeline for full compliance
  - Deny application until full compliance is established

# RLSI Regulatory Process

- Complaint is received through the Central Intake and Emergency Services Unit (24hr hotline)
- Complaint is accepted or not depending on if there is enough information citing a regulatory violation
- If not accepted – no response
- If accepted, it is assigned to RLSI staff who:
  - Contact the program administrator about the concern
  - Interview youth involved when possible
  - Interview program staff
  - Review files and collateral information
- Decision is made with these possible outcomes:
  - Program is found to be in compliance – no violations
  - Program is not in compliance – clarify expectations, educate, violations cited and possible corrective action plan
  - Program is notified of findings verbally and in writing
- Regulatory interventions are reviewed at each licensing renewal

# Child Abuse Allegation Flow Chart



# Identified Gaps

The regulatory process aims to enhance care of children and youth through education of regulations and corrective action plans

- Regulatory oversight is limited – DCF can only close the licenses we issue
  - Issues with hybrid programs
- DCF can't provide concerning information to other national regulating/licensing entities based on statute
- DCF has not yet revoked a RTP license