



Alburgh Bluffs addition to Alburgh Dunes State Park

160 acres, Town of Alburgh, Grande Isle County, VT

Testimony to joint hearing of the House Corrections & Institutions and Senate Institutions committees
By Jon Binhammer, Director of Land Protection, The Nature Conservancy

Alburgh Bluffs

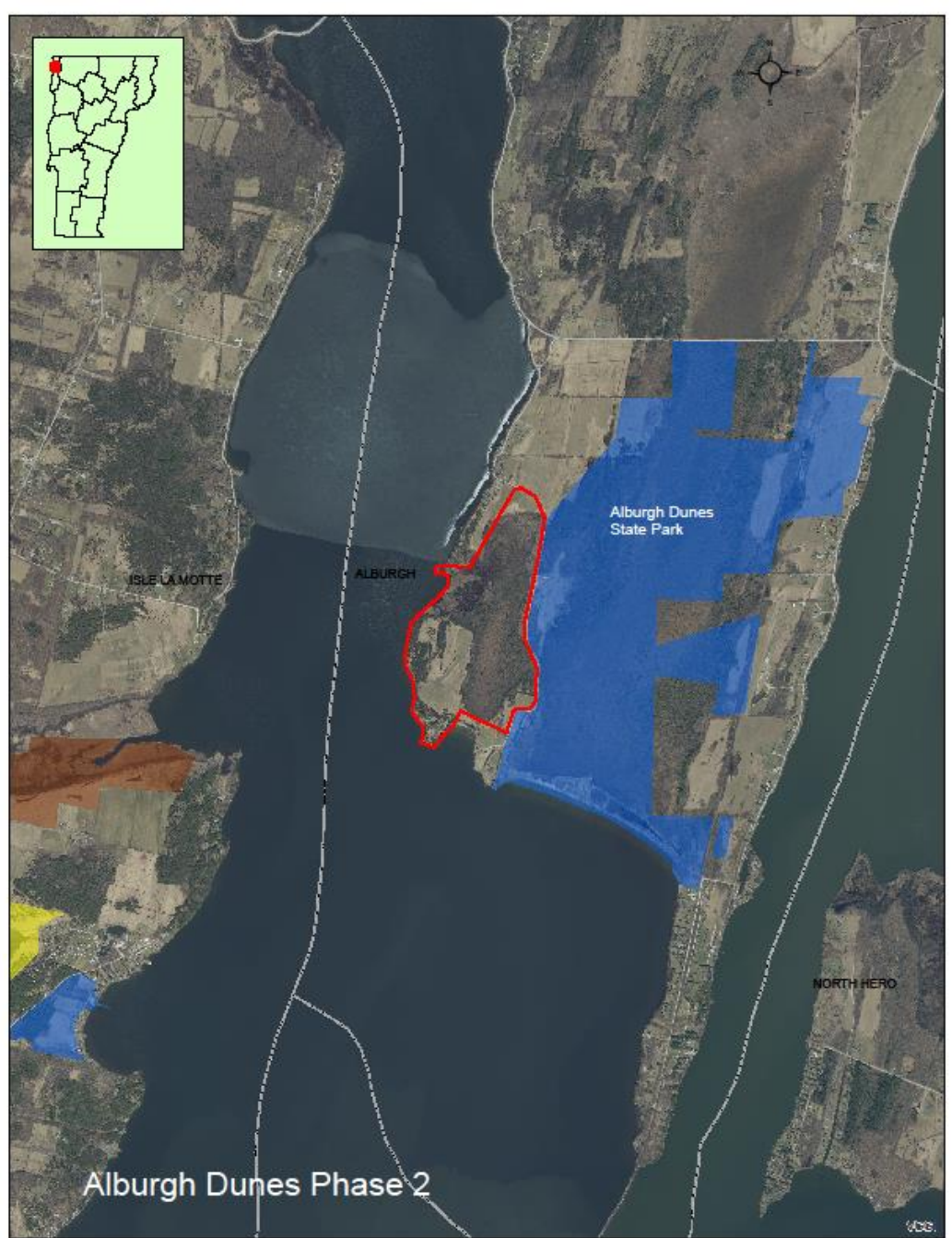
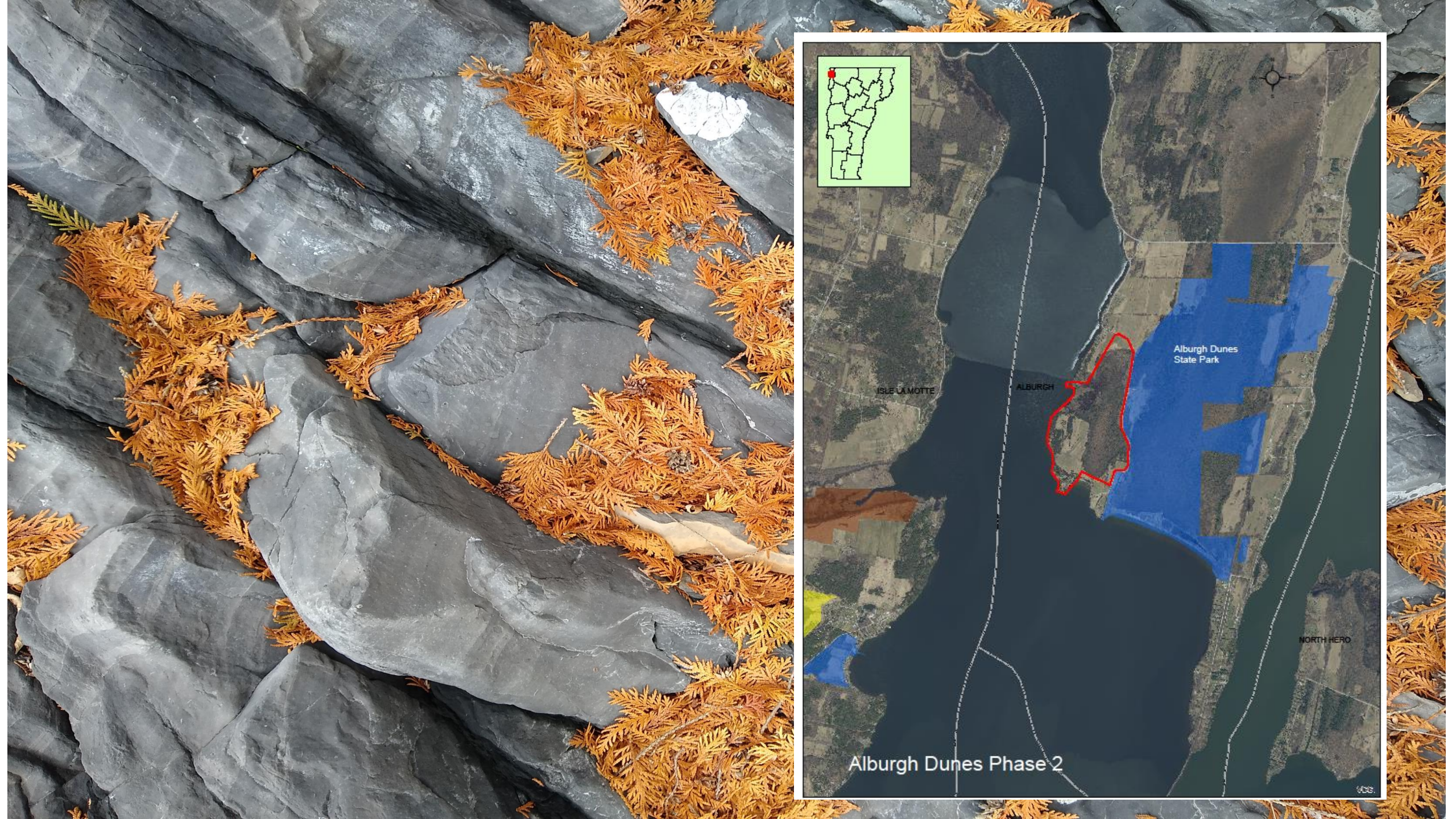
4,800 feet of frontage on Lake Champlain

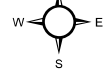
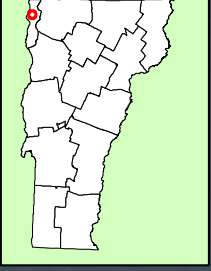
86 acres of wetlands

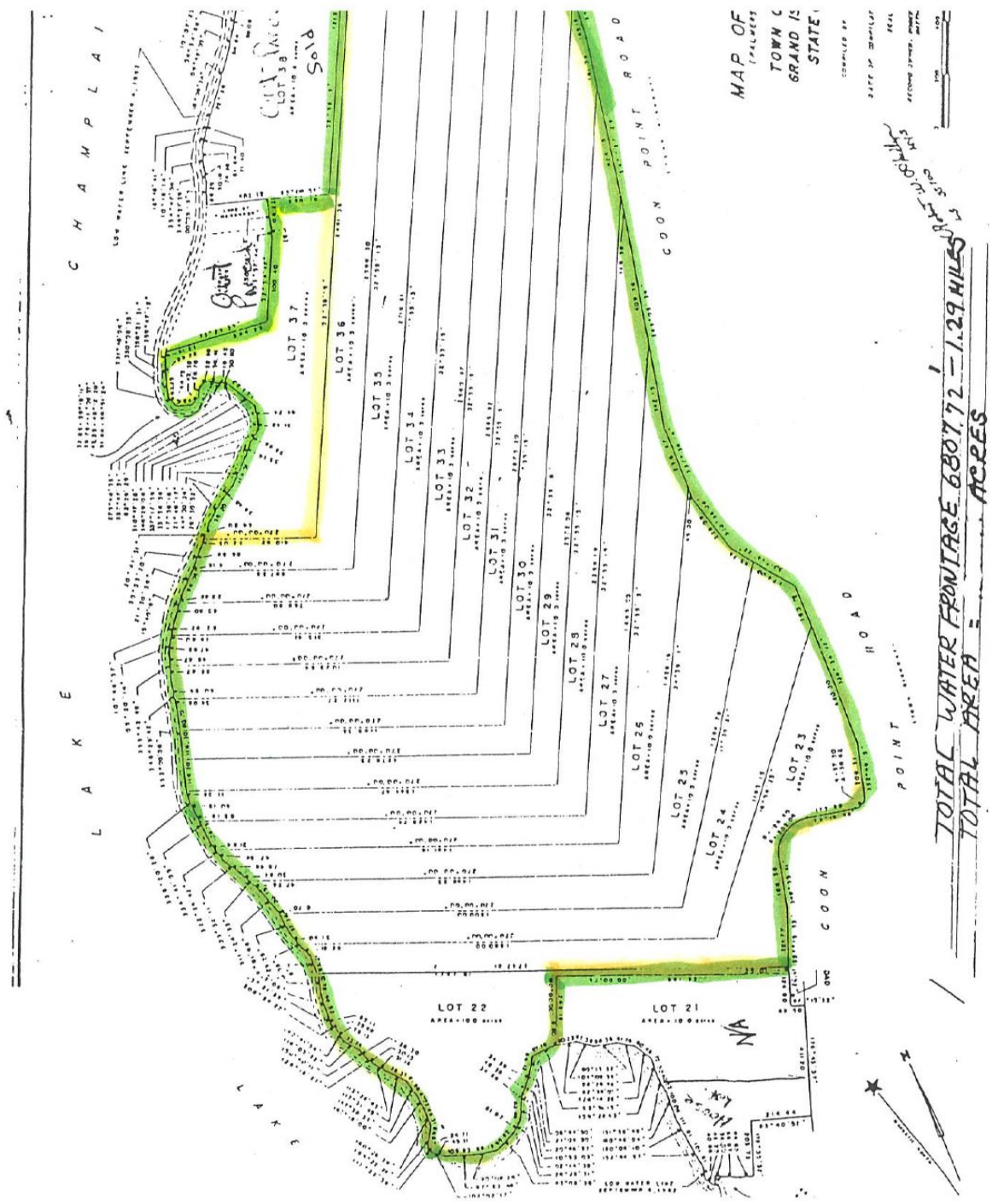
74 acres of uplands

Views of Green Mountains and Adirondacks



















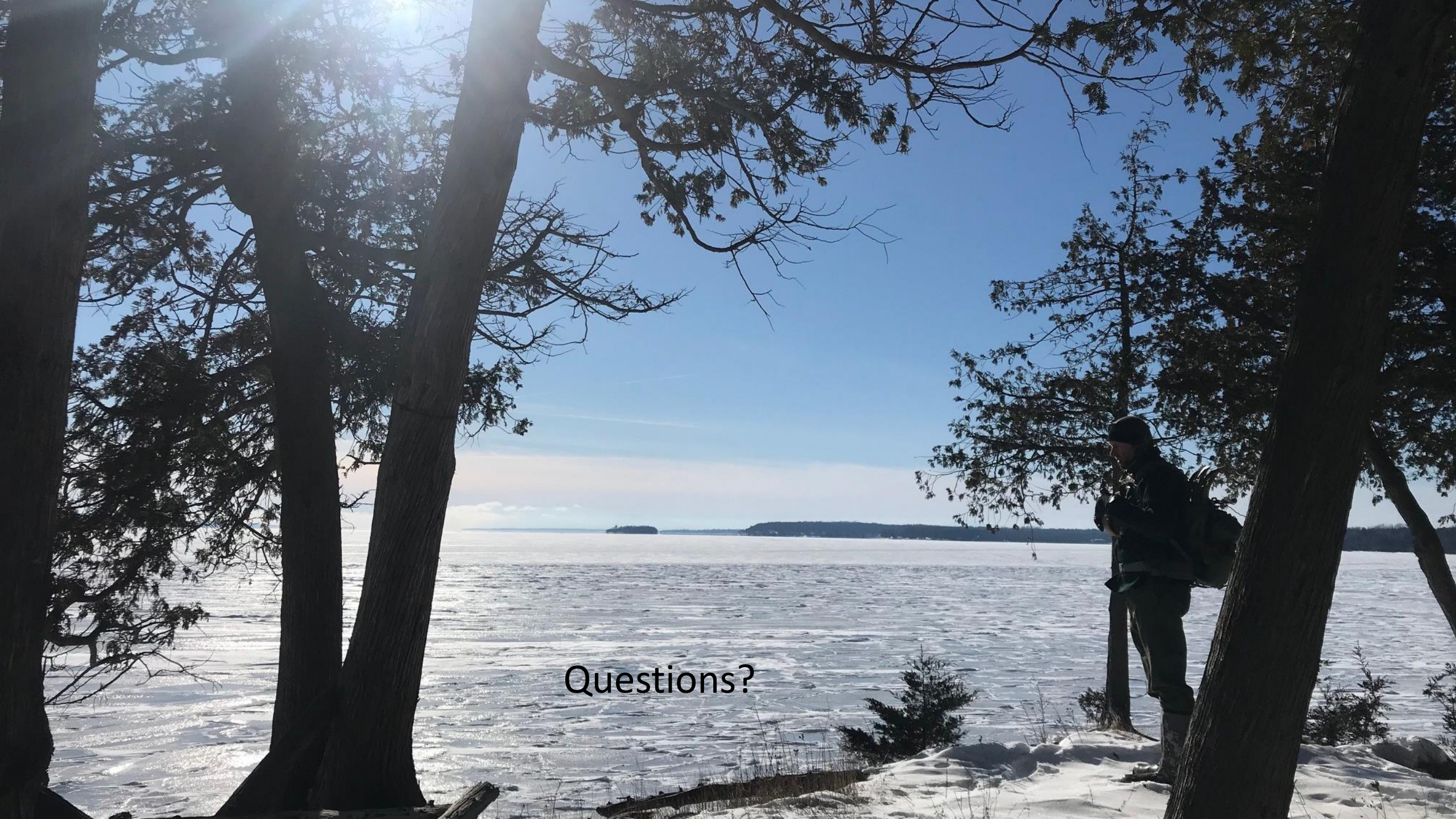
16 Natural Communities, 6 rare or very rare
27 rare, threatened or endangered species



Purchase Price: \$1,109,000

VHCB Investment: \$496,000

LWCF: \$554,500



Questions?