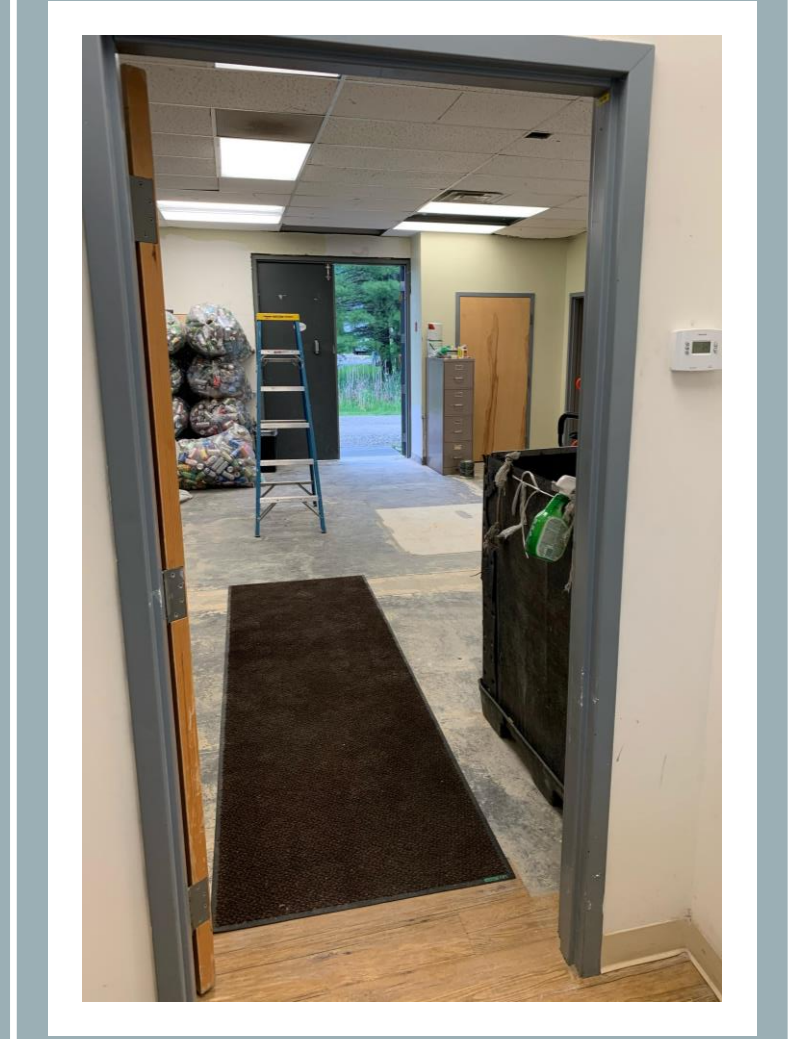


# MODERNIZE VERMONT'S BOTTLE BILL

Jacob and Kimberly Trombley – Vermont Redemption

802-458-5789

[Trombley.Kimberly@gmail.com](mailto:Trombley.Kimberly@gmail.com)



NIGHT OWL

04-30-2020 Thu 14:46:13 (S)





# Increasing the deposit

- Clean Water Fund/ Solid Waste Districts?
- Increases Redemption Rate

# Increase Handling Fee

- Increase Revenue = increased wages and investment into technology.

# Add Containers to the List!

- Increase in Volume
- Increase Revenue = increased wages and investment into technology.

# COMPARING DIFFERENT STATES BOTTLE BILLS

## Maine:

- 91% of single use beverage containers included in bill
- Handling Fee- 4.5 cents

## New York:

- 78% containers in bill
- Handling Fee- 3.5 cents

## Massachusetts:

- 42% containers in bill
- Handling Fee- 3.25 cents

Oregon and Michigan have 10 cent deposits and higher redemption rates.

## New Hampshire:

- Over the last 15 years bottle bills have been introduced a few times.
- 2014, 2009/2010, 2008, 2006



[https://www.bottlebill.org/images/PDF/Bottle%20Bill%2010%20states\\_Summary%201.11.21.pdf](https://www.bottlebill.org/images/PDF/Bottle%20Bill%2010%20states_Summary%201.11.21.pdf)

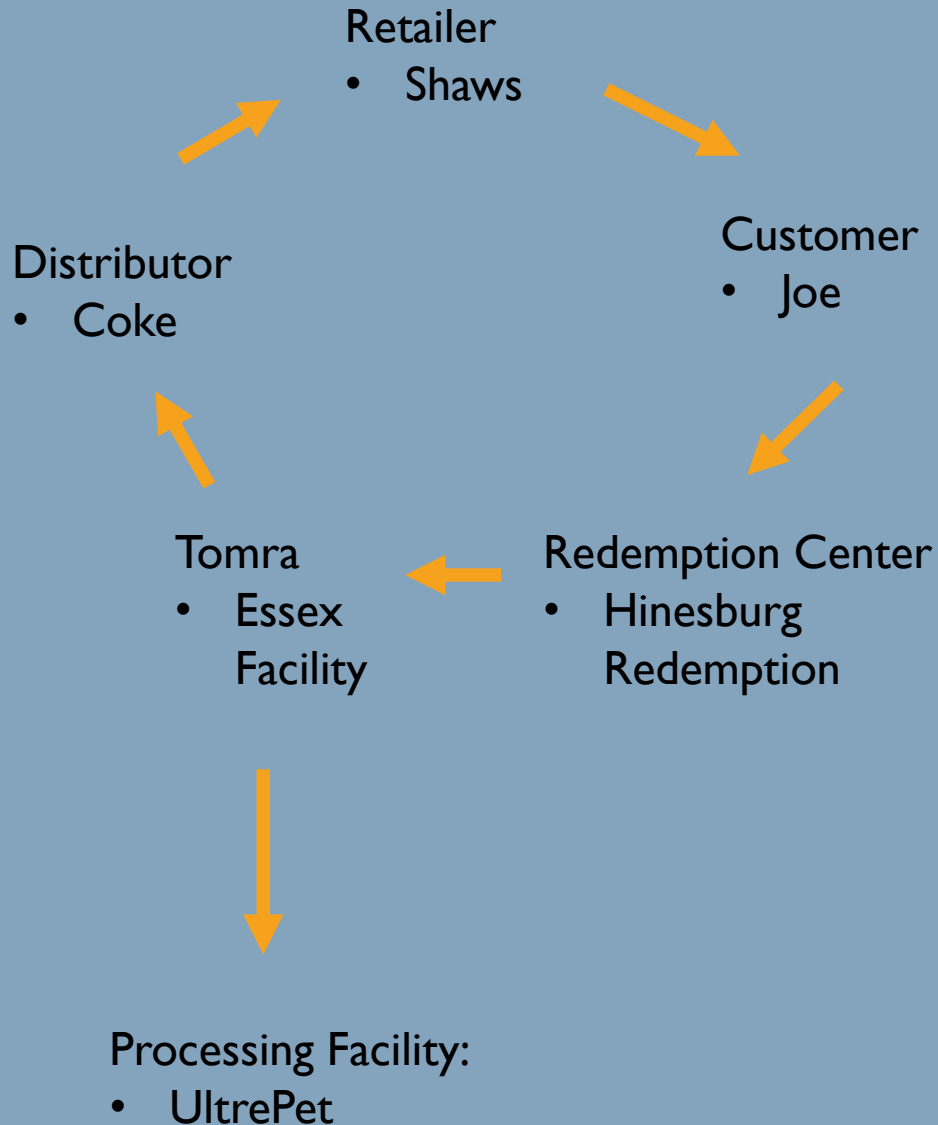
## Key Points:

Redemptions can handle more material.

Our employees deserve a decent raise.

If recycling is a priority to Vermont, then it needs to be done properly. The closed loop system outlined in the current Bottle Bill with amendments in bill H.175 accomplish that! ...But I would also add to increasing all handling fees to 4 cents.

## Joe's Coke Bottle Finds Redemption and Becomes a New Bottle



Coke Distributor sells a 20oz coke PETbottle to Shaws for \$1.00 and \$.05 deposit. Shaws sells the 20oz coke bottle to Joe for \$1.25 and \$.05 deposit. Joe drinks his coke and returns his container to Hinesburg Redemption. Hinesburg Redemption pays Joe \$.05 and then sorts the coke bottle per Tomra's sort list, which would be in 20oz PET commingle. Tomra picks up the coke bottle and pays Hinesburg Redemption the \$.05 deposit and \$.035 handling fee. Tomra sells the coke bottle (that is now bailed) to UltraPet in Albany NY. Large portion of commission goes to Tomra and a small portion back to Coke. Coke pays Tomra back the initial \$.05 deposit it collected from Shaws at the beginning of the process and pays Tomra a separate handling fee.

At the end of this process the hope is that the Coke company can now purchase their recycled material at a lower cost to make more bottles to hold coke beverages.



- The only reason I used Coke in this example is because their goal is to use 100% recycled material in their containers by 2025 and at least 50% recycled material for all packaging and containers by 2030.
- The bottle bill in essence is the ultimate EPR and the distributors already have a system set up to build upon to meet that goal!

