



# OFFICE OF HEAD START VERMONT STATE INFORMATION

*Report compiled from the following sources: FY19 Program  
Information Report (PIR); Head Start Enterprise System;  
and Head Start State Collaboration Offices*



## Funded enrollment

Funded Enrollment							
	Total	HS Fed	HS State	All HS	EHS Fed	EHS State	All EHS
<b>Slots</b>	<b>1,392</b>	861	0	<b>861</b>	531	0	<b>531</b>
<p><i>EHS Federal Slots include <b>116</b> awarded in <b>3</b> EHS-CC Partnership/Expansion grants:  <b>84</b> Partnership and <b>32</b> Expansion</i></p>							
	Total	HS only	EHS Only	HS/EHS	<p><b>7 Grantees: 4 CAP Agencies;                  2 Non-Profits; 1 School System</b></p>		
<b>Grants</b>	<b>10</b>	3	3	4			

This slide reflects data from the Head Start Enterprise System as of October 1, 2020.



## Funding

<b>Federal Funding (includes final COLA and Quality funds awarded in FY20)</b>			
<b>Total</b>	<b>Head Start</b>	<b>Early Head Start*</b>	<b>State Supplement (non-federal)</b>
<b>\$23,354,893</b>	\$13,627,129	\$9,727,764	\$0
<i>(Also received \$332,899 for training/technical assistance)</i> <i>*EHS includes \$2,482,158 for EHS-CC Partnership/Expansion Grants</i>			

<b>New FY20 Funding Breakout: COLA, Quality Improvement, and COVID</b>		
<b>COLA</b>	<b>QI</b>	<b>COVID (One-Time)</b>
\$446,680	\$574,196	\$1,271,633

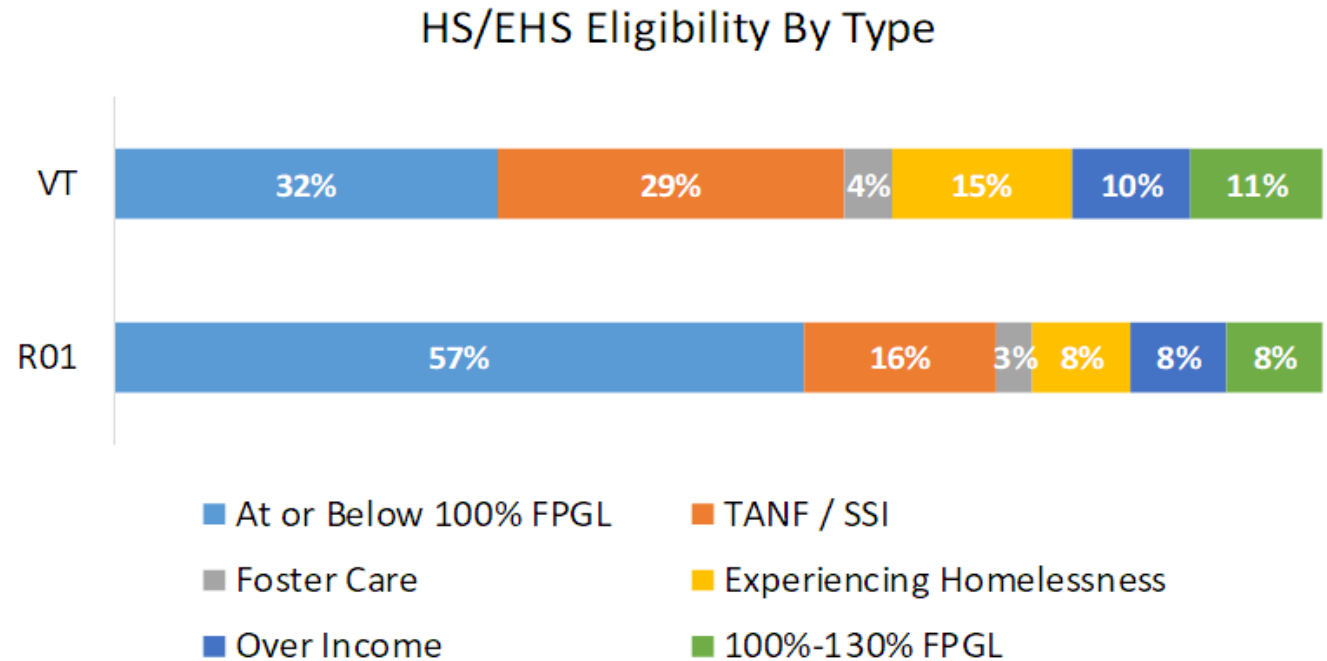
*This slide reflects data from the Head Start Enterprise System as of October 1, 2020.*



## Cumulative enrollment

<b><u>Total cumulative enrollment</u></b>	<b>1,844</b>
<b><u>Head Start children</u></b>	<b>1,100 (60%)</b>
<b><u>Early Head Start children</u></b>	<b>686 (37%)</b>
<b><u>Early Head Start pregnant women</u></b>	<b>58 (3%)</b>

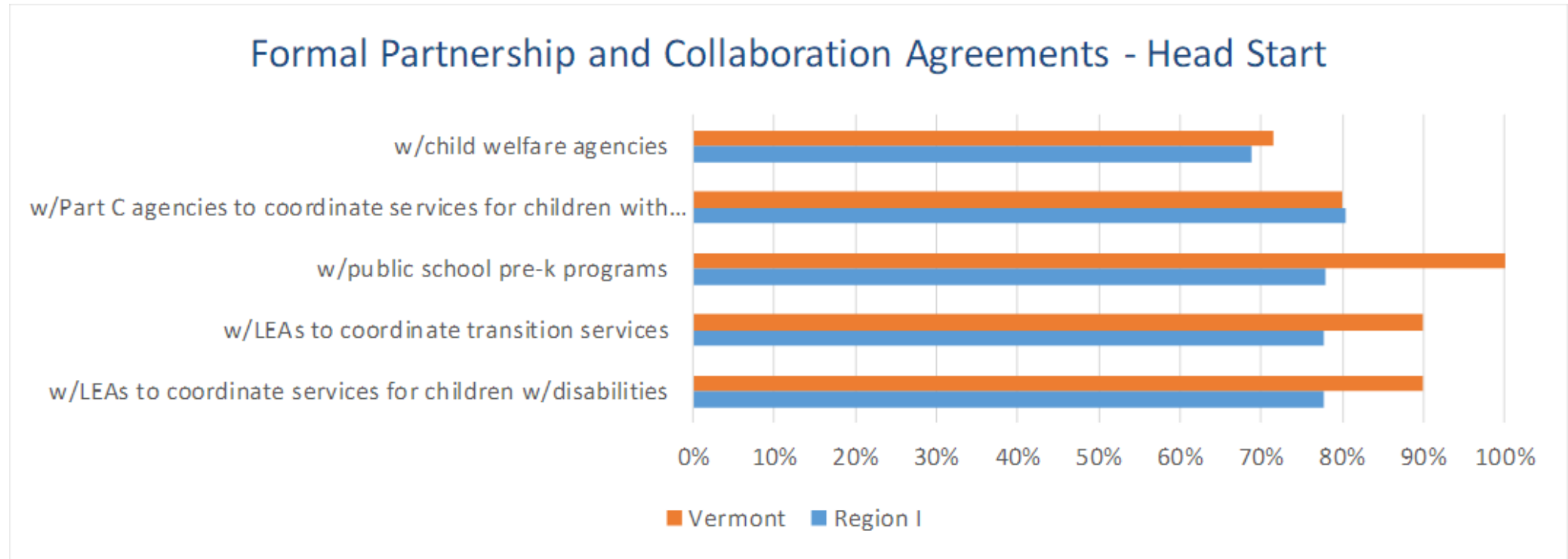
Percentage of children w/disabilities (IEP/IFSP)	Head Start	Early Head Start
	23%	21%
receiving child care subsidies	44%	40%



Data from 2018-2019 (FY19) Program Information Report (PIR) except where otherwise noted.



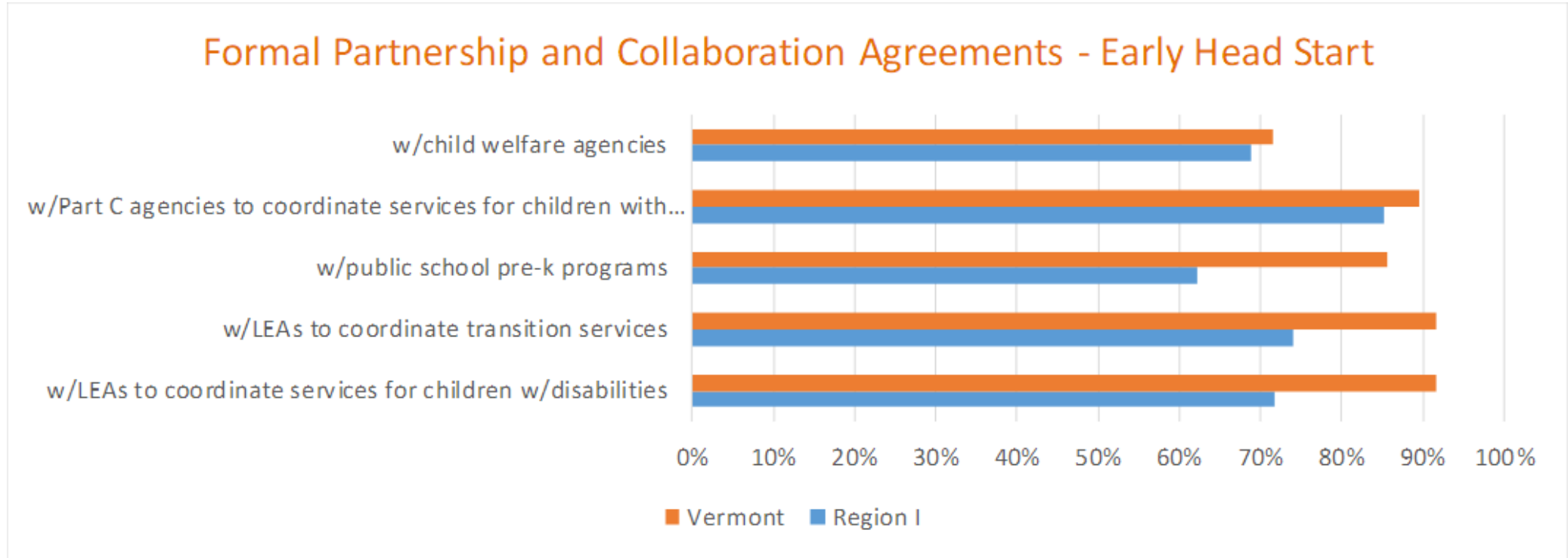
## Collaboration agreements/community engagement



Data from 2018-2019 (FY19) Program Information Report (PIR) except where otherwise noted.



## Collaboration agreements/community engagement



Data from 2018-2019 (FY19) Program Information Report (PIR) except where otherwise noted.



## Mental health: EHS/HS children

### Vermont

17% of EHS/HS children had a mental health professional consult with **program staff**.

- *44% of those children had 3 or more of those consultations.*

15% of EHS/HS children had a mental health professional consult with their **family**.

- *51% of those children had 3 or more of those consultations.*

5% of children were **referred** for mental health services outside of their EHS/HS program.

- *80% of those children **received** mental health services.*

### Region 1

15% of EHS/HS children had a mental health professional consult with **program staff**.

- *47% of those children had 3 or more of those consultations.*

8% of EHS/HS children had a mental health professional consult with their **family**.

- *40% of those children had 3 or more of those consultations.*

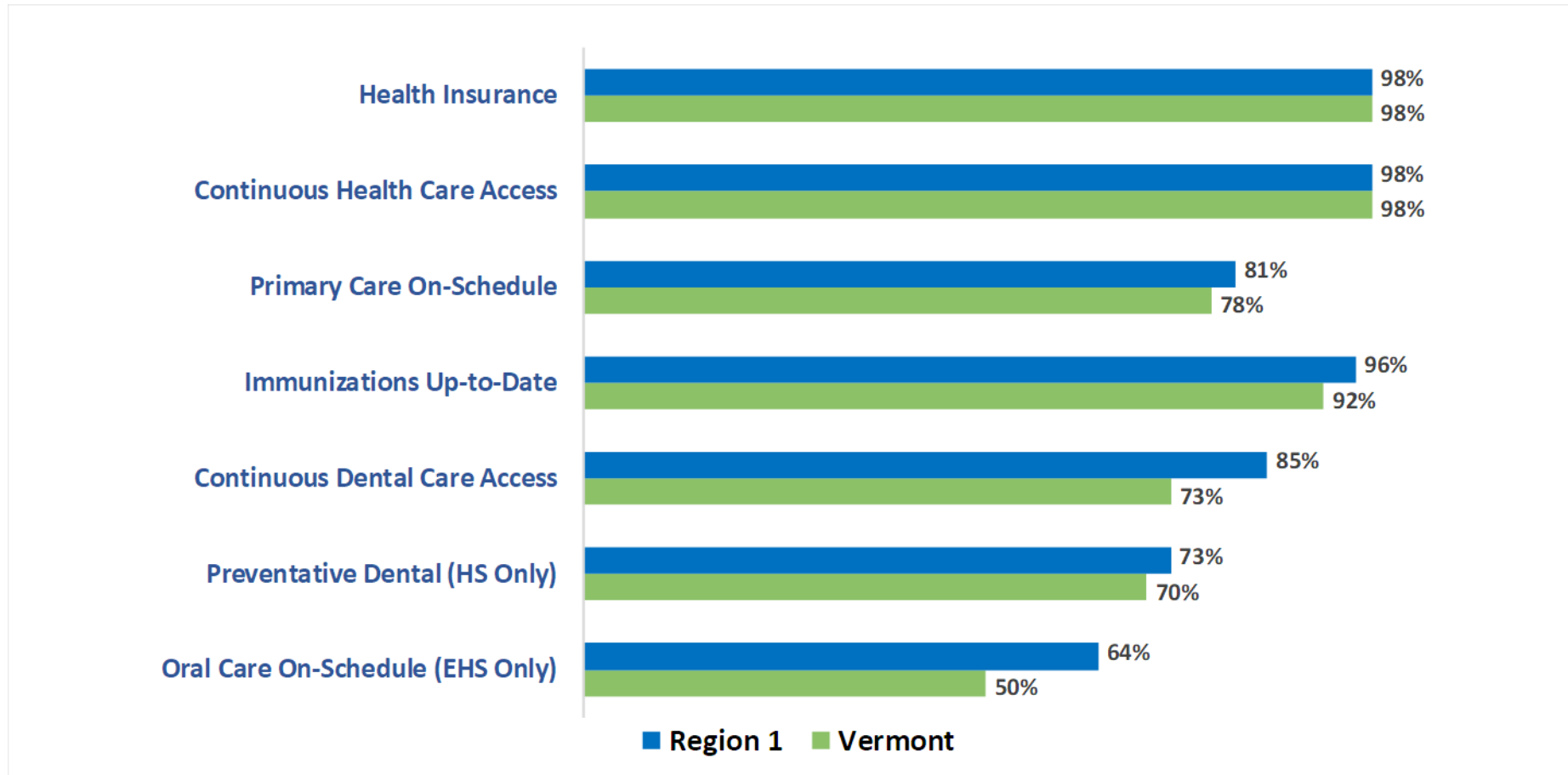
5% of children were **referred** for mental health services outside of their EHS/HS program.

- *71% of those children **received** mental health services.*





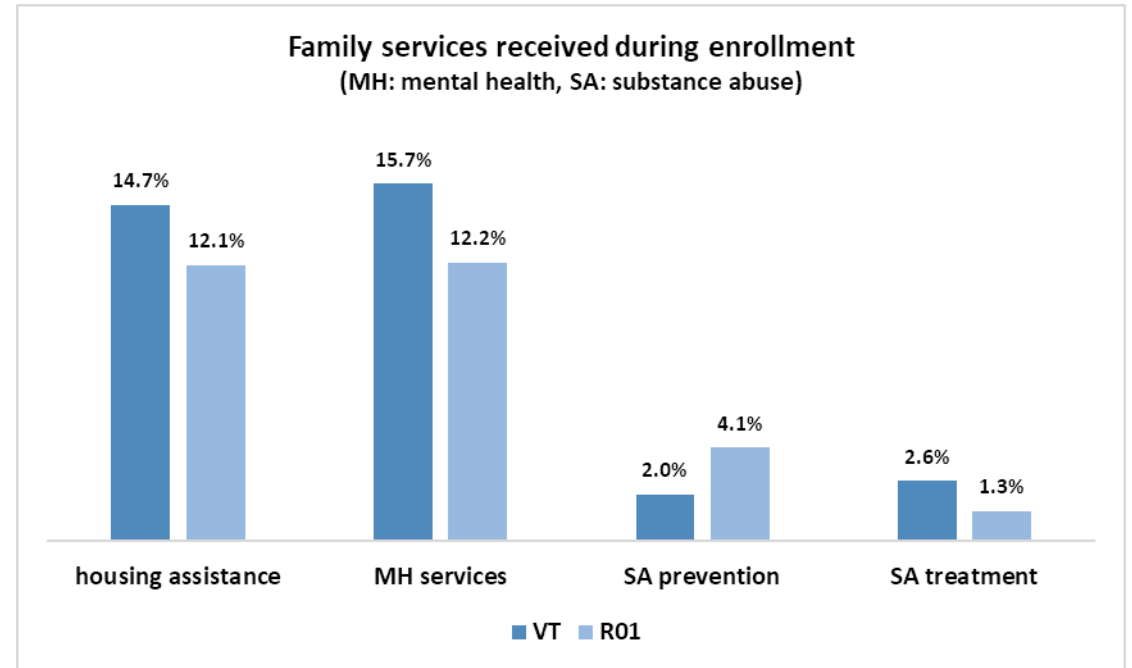
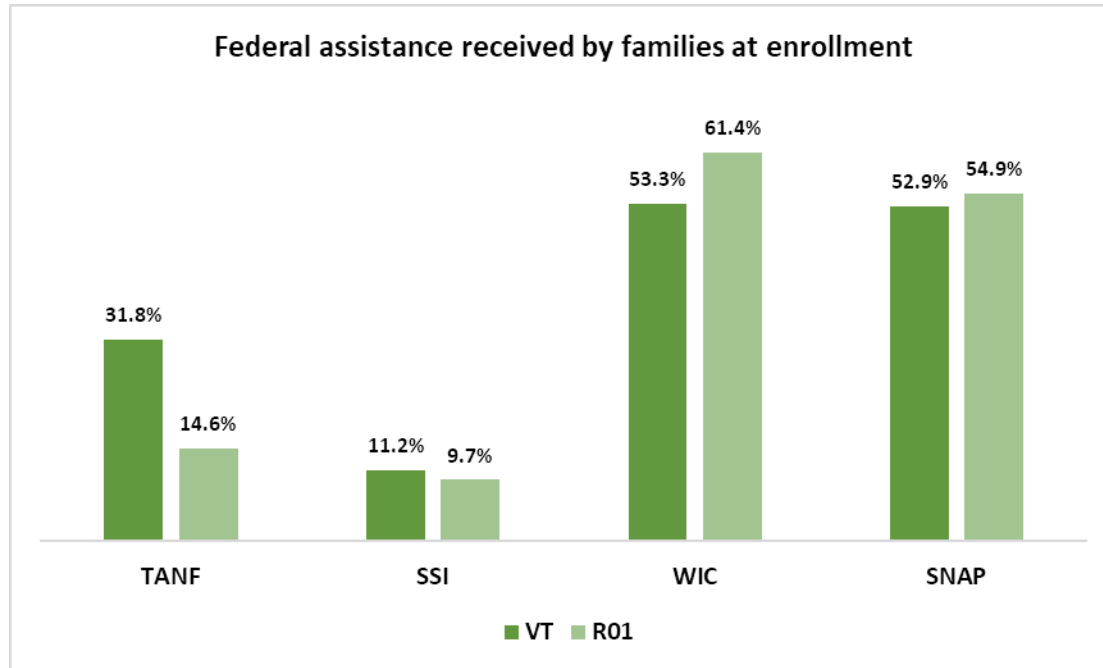
## Child health & dental data



Data from 2018-2019 (FY19) Program Information Report (PIR) except where otherwise noted.



## Family services (EHS/HS)



76% (1,235) of HS/EHS families received at least one family service from their program. Of family services received, the top three for VT program families were **health education**, **parenting education**, and **emergency or crisis intervention**.

306 (19%) of HS/EHS families experienced homelessness during the enrollment year; of these families, 131 (43%) later found housing that year.



## Teacher turnover

### Vermont

#### Total HS Teachers: 116

14% (16) of HS teachers left during program year; of those teachers:

- *38% (6) Vacancies unfilled for 3+ months*
- *69% (11) Were filled during program year*

#### Total EHS Teachers: 96

12% (11) of EHS teachers left during program year; of those teachers:

- *36% (4) Vacancies unfilled for 3+ months*
- *27% (3) Were filled during program year*

### Region 1

#### Total HS Teachers: 1,551

17% (270) of HS teachers left during program year; of those teachers:

- *19% (50) Vacancies unfilled for 3+ months*
- *65% (176) Were filled during program year*

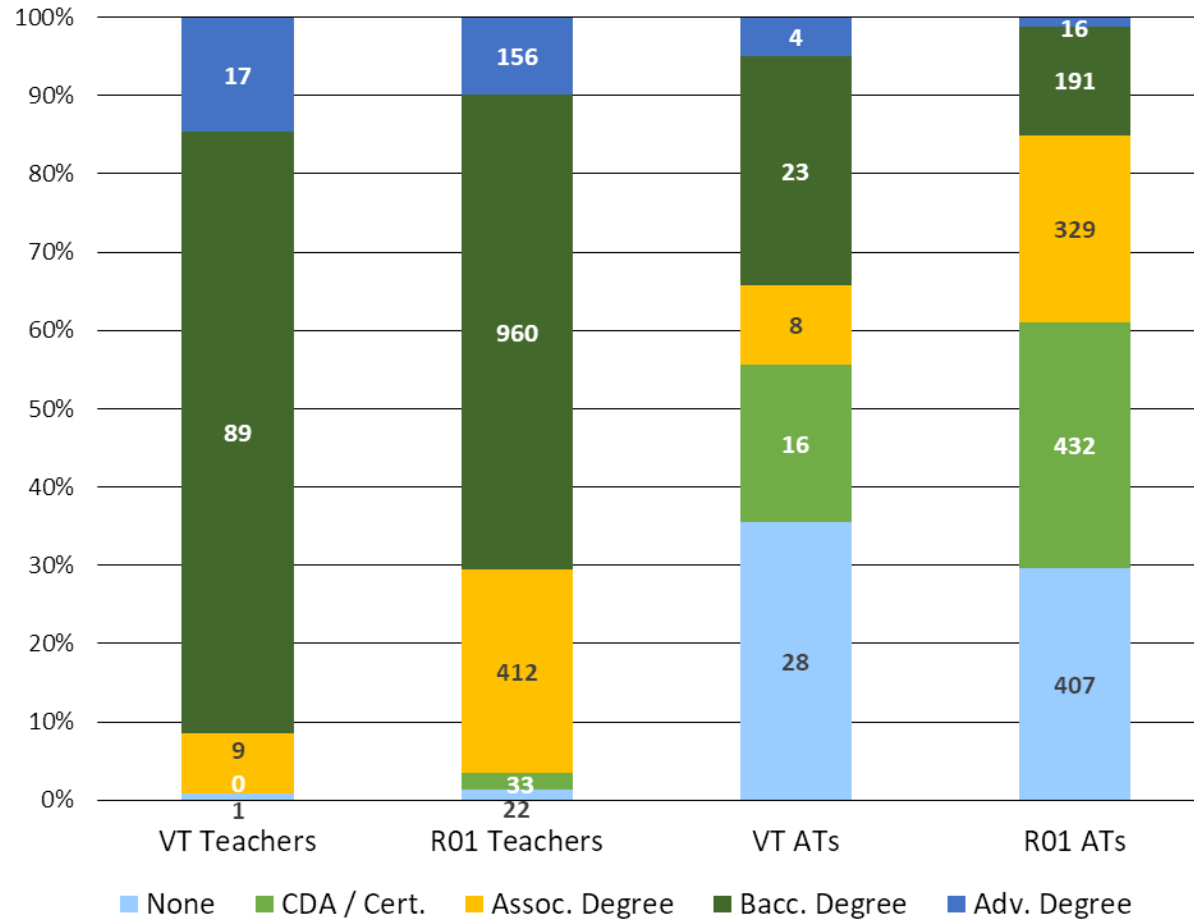
#### Total EHS Teachers: 874

16% (141) of EHS teachers left during program year; of those teachers:

- *23% (33) Vacancies unfilled for 3+ months*
- *66% (93) Were filled during program year*



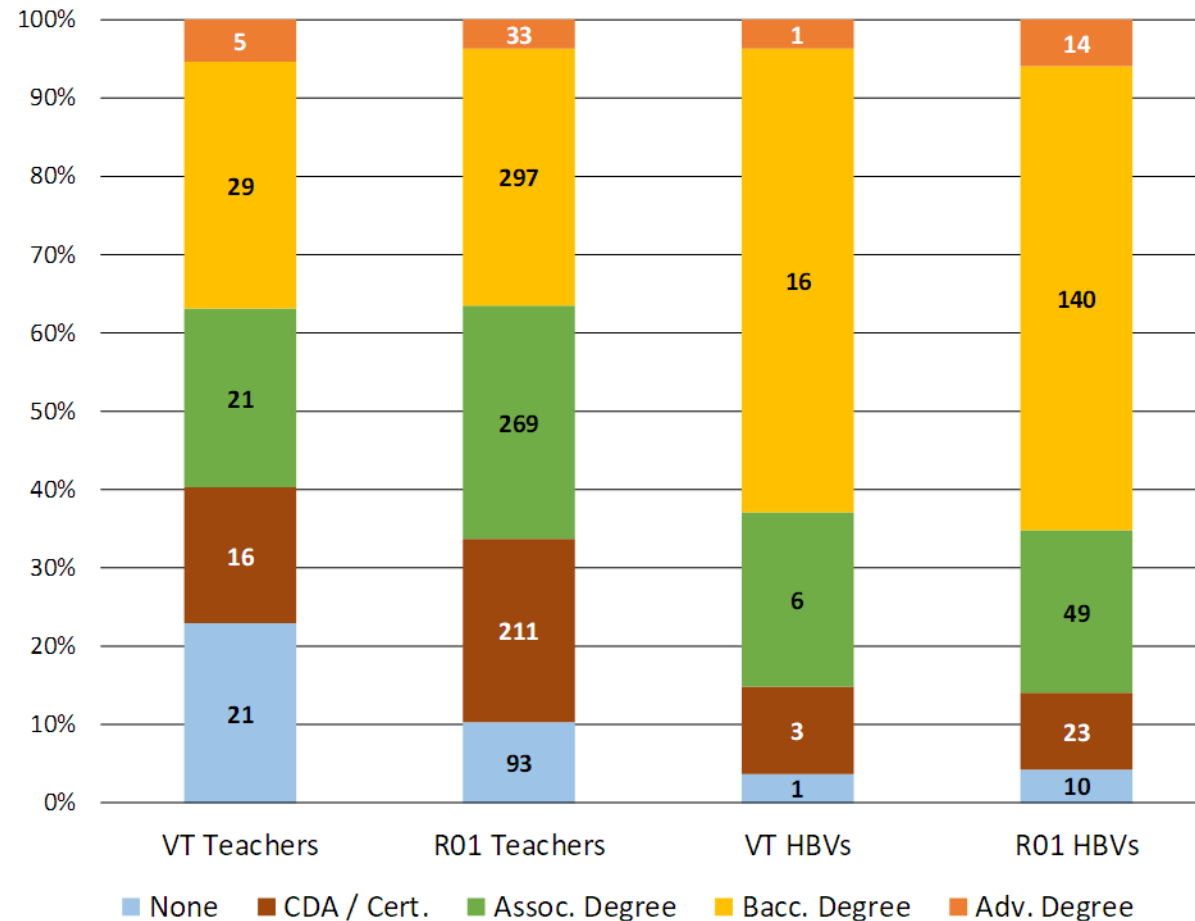
## HS teacher qualifications



Data from 2018-2019 (FY19) Program Information Report (PIR) except where otherwise noted.



## EHS teacher/home visitor qualifications



Data from 2018-2019 (FY19) Program Information Report (PIR) except where otherwise noted.

