

NJORTH COUNTRY SUPERVISORY UNION

ESTIMATED IMPACT OF FY2023 IMPLEMENTATION OF THE CENSUS BLOCK GRANT

As our analysis of FY2019 demonstrated, the implementation of the Census Block Grant without supplemental aid or weighting factors will be detrimental to a significant number of school districts. The following analysis uses the Agency of Education information in the workbook, FY2023 Census Block Grant Estimator, of October 2021.

The analysis requires estimating the FY2027 Uniform Base Amount. From the estimator workbook, we used the information on the worksheet OutYears:

Uniform Base Amount		
	Appropriations	
FY2018	164,832,965	
FY2019	173,489,311	
FY2020	180,339,450	
Average	172,887,242	
	NIPA annual % Amount	
FY2021	2.006%	176,355,360
FY2022	1.060%	178,224,727
FY2023	4.696%	186,594,160
Average	2.587%	
	NIPA avg %	
FY2024	2.587%	191,421,351
FY2025	2.587%	196,373,421
FY2026	2.587%	201,453,601

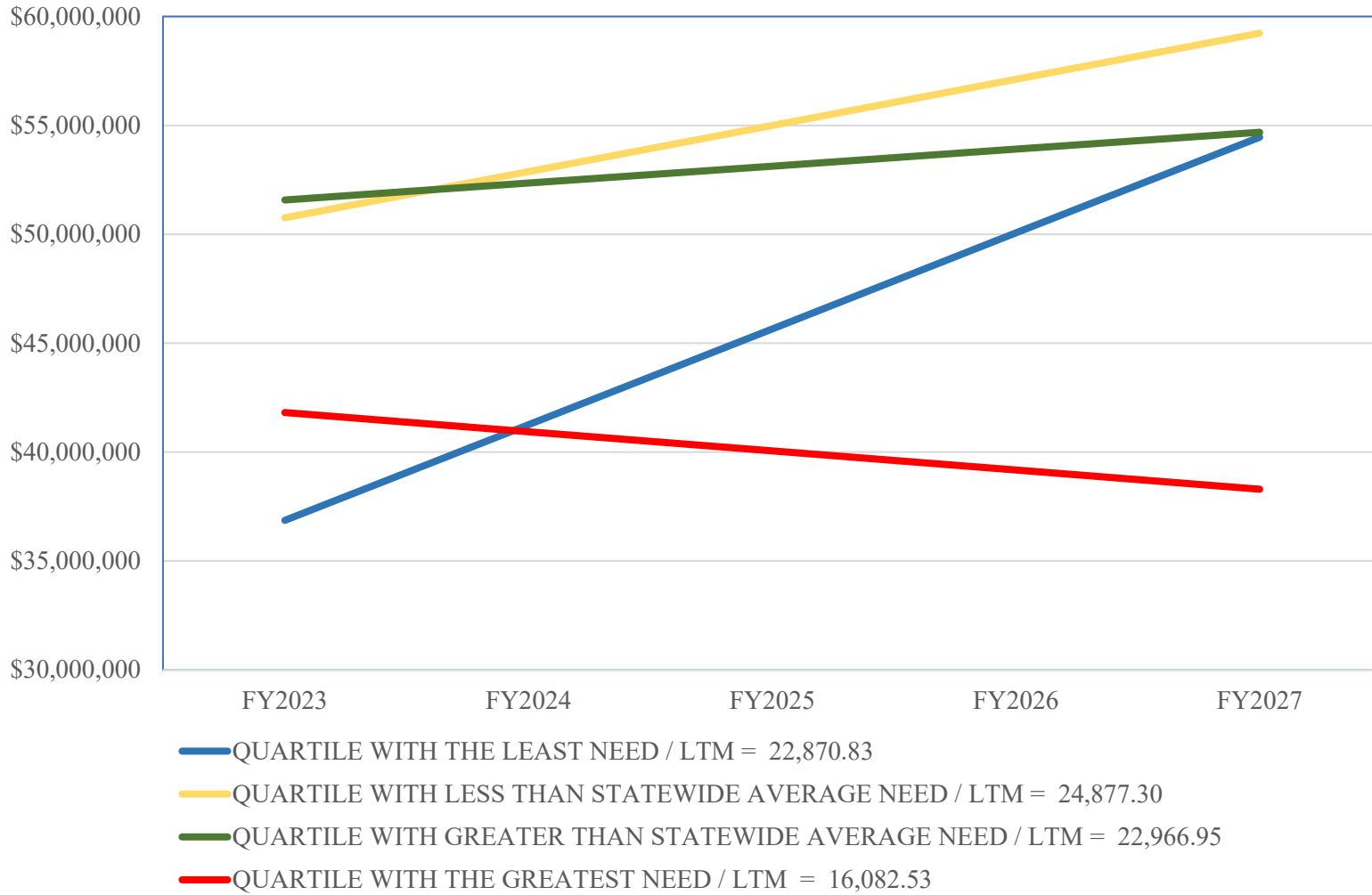
The worksheet does not provide the FY2027 grant as the calculation factors are currently unknown. The AoE will use three years of the National Income and Product Accounts (NIPA), but the years are not known. We’re using the 2.587% average. We could use almost any reasonable value, and it would only slightly modify the slope of the graph. We’re also using the current Long Term Membership, statewide and per district.

	NIPA avg %	Estimated Grant	LTM	Census Block Grant Per Student
FY2027	2.587%	\$ 206,665,206	86,797.61	\$ 2,381.00

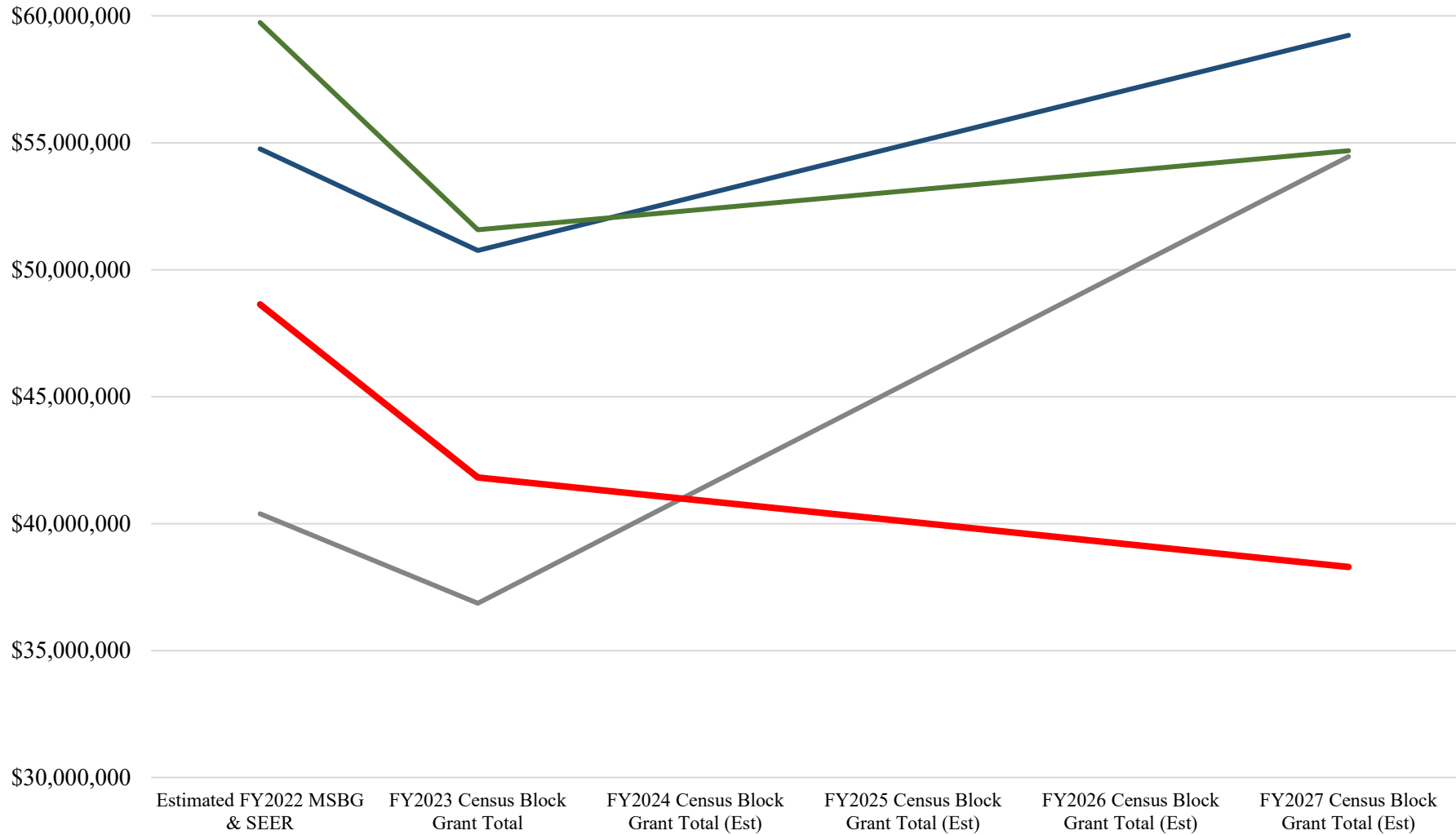
As the chart below indicates, the districts with the least need will see extraordinary increases in available funding, while those with the greatest need will see reductions in funding. The districts with greater than statewide average need will see modest increases, unlikely to keep pace with the annual increases in education spending, while those with less than average need will see significant increases in funding.

			ESTIMATED CENSUS BLOCK GRANT FY2023-FY2027						
Data reflect the FY2022 governance structure.			ESTIMATED CENSUS BLOCK GRANT PER STUDENT FY2023-FY2027						
Changes in districts and SUs from FY2018 and FY2019 were accounted for.									
LTM - long-term membership, average of ADM for the most recent three years.									
LTM - long-term membership, average of ADM for the most recent three years.			FY18-20 Average Funding	LTM ADM Average	FY2023 Census Block Grant Per Student	FY2023 Census Block Grant Total	FY2027 SU Census grant per student	FY2027 Census Block Grant Total	Census Block Grant Total Variance
S id	Payee	SU list	172,887,240	86,797.61	\$ 2,085.38	181,006,025	\$ 2,381.00	206,665,109	25,659,084
S022	S022	Franklin West SU	2,368,435	2,018.31	1,228.58	2,479,657	\$ 2,381.00	4,805,596	2,325,939
S003	U055	Addison Central SD	2,174,113	1,761.97	1,291.85	2,276,209	\$ 2,381.00	4,195,251	1,919,042
S055	T145	Dresden Interstate SD	813,487	620.85	1,371.81	851,688	\$ 2,381.00	1,478,244	626,556
S020	S020	Franklin Northeast SU	2,853,705	1,986.31	1,504.15	2,987,715	\$ 2,381.00	4,729,404	1,741,689
S069	U071	Montpelier Roxbury SD	1,872,076	1,258.67	1,557.19	1,959,989	\$ 2,381.00	2,996,893	1,036,904
S001	U061	Mt. Abraham USD	2,218,683	1,483.12	1,566.21	2,322,872	\$ 2,381.00	3,531,309	1,208,437
S066	S066	Greater Rutland County SU	2,806,133	1,854.05	1,584.59	2,937,909	\$ 2,381.00	4,414,493	1,476,584
S028	U059	Orange Southwest UUSD	1,362,193	877.94	1,624.44	1,426,162	\$ 2,381.00	2,090,375	664,213
S051	S051	Windsor Central SU	1,545,090	987.24	1,638.55	1,617,647	\$ 2,381.00	2,350,618	732,971
S014	U056	Champlain Valley SD	6,932,519	4,278.42	1,696.44	7,258,070	\$ 2,381.00	10,186,918	2,928,848
S026	U090	Lamoille South UUSD	2,831,707	1,639.73	1,808.03	2,964,684	\$ 2,381.00	3,904,197	939,513
S025	S025	Lamoille North SU	3,189,464	1,775.67	1,880.55	3,339,241	\$ 2,381.00	4,227,870	888,629
S007	T050	Colchester SD	4,241,464	2,328.55	1,907.04	4,440,643	\$ 2,381.00	5,544,278	1,103,635
QUARTILE WITH THE LEAST NEED				22,870.83	1,611.77	36,862,486	\$ 2,381.00	54,455,446	17,592,960
S036	S036	Rutland Northeast SU	2,871,581	1,575.66	1,908.04	3,006,430	\$ 2,381.00	3,751,646	745,216
S067	U064	Kingdom East SD	3,383,558	1,825.86	1,940.15	3,542,450	\$ 2,381.00	4,347,373	804,923
S042	U060	Harwood UUSD	3,412,470	1,830.82	1,951.43	3,572,720	\$ 2,381.00	4,359,182	786,462
S012	U401	Mt. Mansfield UUSD	4,950,507	2,349.47	1,963.65	5,182,983	\$ 2,381.00	6,284,578	1,101,595
S004	U062	Slate Valley UUSD	2,395,441	1,272.55	1,970.79	2,507,931	\$ 2,381.00	3,029,942	522,011
S016	T191	South Burlington SD	4,860,347	2,580.33	1,972.07	5,088,589	\$ 2,381.00	6,143,766	1,055,177
S030	S030	White River Valley SU	3,132,369	1,643.21	1,995.77	3,279,465	\$ 2,381.00	3,912,483	633,018
S006	S006	Bennington-Rutland SU	4,498,756	2,245.79	2,097.27	4,710,018	\$ 2,381.00	5,347,226	637,208
S027	S027	Orange East SU	3,718,034	1,840.29	2,115.23	3,892,633	\$ 2,381.00	4,381,730	489,097
S068	S068	Central Vermont SU	2,738,543	1,335.64	2,146.65	2,867,145	\$ 2,381.00	3,180,159	313,014
S032	U092	Washington Central UUSD	3,021,964	1,471.64	2,149.90	3,163,875	\$ 2,381.00	3,503,975	340,100
S015	T037	Burlington SD	7,879,647	3,830.41	2,153.73	8,249,675	\$ 2,381.00	9,120,206	870,531
S033	U052	Mill River UUSD	1,616,937	785.63	2,154.79	1,692,868	\$ 2,381.00	1,870,585	177,717
QUARTILE WITH LESS THAN STATEWIDE AVERAGE NEED				24,877.30	2,039.96	50,756,782	\$ 2,381.00	59,232,851	8,476,069
S005	S005	Southwest Vermont SU	7,264,825	3,527.60	2,156.13	7,605,981	\$ 2,381.00	8,399,216	793,235
S024	S024	Grand Isle SU	1,920,533	930.09	2,161.86	2,010,721	\$ 2,381.00	2,214,544	203,823
S034	S034	Orleans Central SU	2,256,675	1,083.08	2,181.42	2,362,648	\$ 2,381.00	2,578,813	216,165
S035	S035	Orleans Southwest SU	2,278,269	1,074.61	2,219.65	2,385,257	\$ 2,381.00	2,558,646	173,389
S048	S048	Windham Southeast SU	5,464,029	2,567.56	2,228.04	5,720,620	\$ 2,381.00	6,113,360	392,740
S023	U057	Maple Run USD	5,449,338	2,546.10	2,240.78	5,705,239	\$ 2,381.00	6,062,264	357,025
S021	U089	Missisquoi Valley SD	3,979,211	1,843.00	2,260.49	4,166,075	\$ 2,381.00	4,388,183	222,108
S019	S019	Essex North SU	884,543	409.23	2,262.98	926,081	\$ 2,381.00	974,377	48,296
S009	S009	Caledonia Central SU	3,325,460	1,526.54	2,280.73	3,481,624	\$ 2,381.00	3,634,692	153,068
S002	U054	Addison Northwest SD	2,067,389	945.62	2,288.95	2,164,474	\$ 2,381.00	2,251,521	87,047
S031	S031	North Country SU	5,936,764	2,703.93	2,298.71	6,215,554	\$ 2,381.00	6,438,057	222,503
S065	U051	Essex Westford ECUUSD	8,433,095	3,809.59	2,317.60	8,829,113	\$ 2,381.00	9,070,634	241,521
QUARTILE WITH GREATER THAN STATEWIDE AVERAGE NEED				22,966.95	2,241.45	51,573,387	\$ 2,381.00	54,684,308	3,110,921
S011	T179	St. Johnsbury SD	2,480,486	1,111.08	2,337.34	2,596,970	\$ 2,381.00	2,645,481	48,511
S049	S049	Windham Southwest SU	1,667,612	711.57	2,453.62	1,745,923	\$ 2,381.00	1,694,248	(51,675)
S052	S052	Windsor Southeast SU	3,327,017	1,389.48	2,506.88	3,483,254	\$ 2,381.00	3,308,352	(174,902)
S054	T093	Hartford SD	3,334,133	1,384.25	2,521.73	3,490,704	\$ 2,381.00	3,295,899	(194,805)
S056	T193	Springfield SD	2,991,517	1,232.63	2,540.91	3,131,999	\$ 2,381.00	2,934,892	(197,107)
S046	S046	Windham Central SU	2,475,736	1,015.00	2,553.69	2,591,997	\$ 2,381.00	2,416,715	(175,282)
S061	U097	Barre UUSD	5,788,919	2,363.03	2,564.83	6,060,767	\$ 2,381.00	5,626,374	(434,393)
S010	T126	Milton SD	4,026,284	1,604.59	2,627.06	4,215,358	\$ 2,381.00	3,820,529	(394,829)
S063	S063	Two Rivers SU	2,644,064	1,031.93	2,682.57	2,768,229	\$ 2,381.00	2,457,025	(311,204)
S064	U146	Rivendell Interstate SD	794,510	307.44	2,705.63	831,820	\$ 2,381.00	732,015	(99,805)
S040	T173	Rutland City SD	4,852,312	1,876.80	2,706.83	5,080,177	\$ 2,381.00	4,468,661	(611,516)
S017	T249	Winooski SD	2,240,448	849.85	2,760.09	2,345,659	\$ 2,381.00	2,623,493	(322,166)
S047	S047	Windham Northeast SU	3,314,848	1,204.88	2,880.38	3,470,513	\$ 2,381.00	2,868,819	(601,694)
QUARTILE WITH THE GREATEST NEED				16,082.53	2,603.20	41,813,370	\$ 2,381.00	38,292,504	(3,520,866)
Z999	Z999	Statewide	172,887,240	86,797.61	\$ 2,085.38	181,006,025	\$ 2,381.00	206,665,109	25,659,084

ESTIMATED CHANGE IN CENSUS GRANT BY QUARTILE

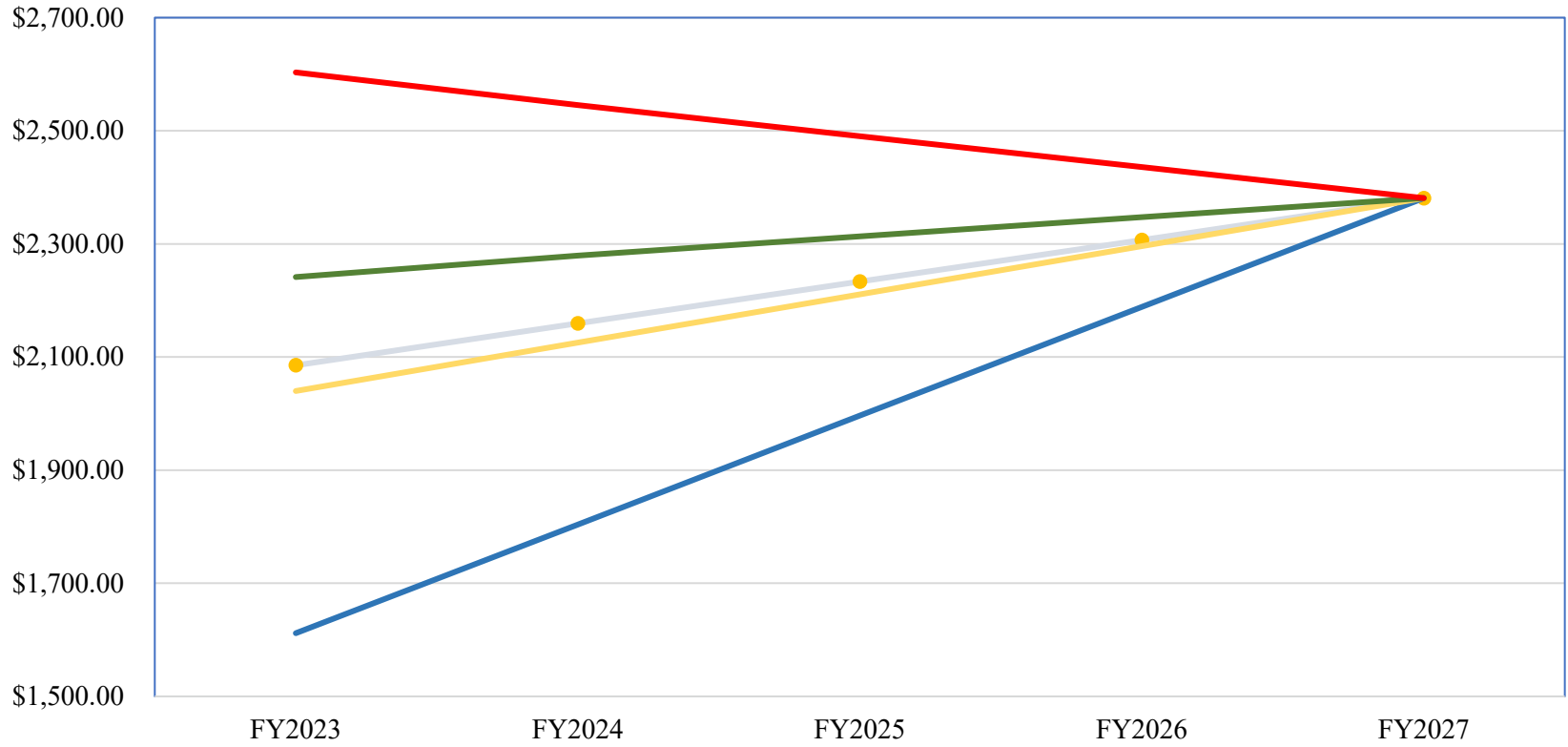


ESTIMATED CHANGE IN CENSUS GRANT BY QUARTILE



- QUARTILE WITH THE LEAST NEED
- QUARTILE WITH LESS THAN STATEWIDE AVERAGE NEED
- QUARTILE WITH GREATER THAN STATEWIDE AVERAGE NEED
- QUARTILE WITH THE GREATEST NEED

ESTIMATED CHANGE IN CENSUS GRANT PER STUDENT



- STATEWIDE AVERAGE CENSUS BLOCK GRANT PER STUDENT -
- QUARTILE WITH THE LEAST NEED / LTM = 22,870.83
- QUARTILE WITH LESS THAN STATEWIDE AVERAGE NEED / LTM = 24,877.30
- QUARTILE WITH GREATER THAN STATEWIDE AVERAGE NEED / LTM = 22,966.95
- QUARTILE WITH THE GREATEST NEED / LTM = 16,082.53

