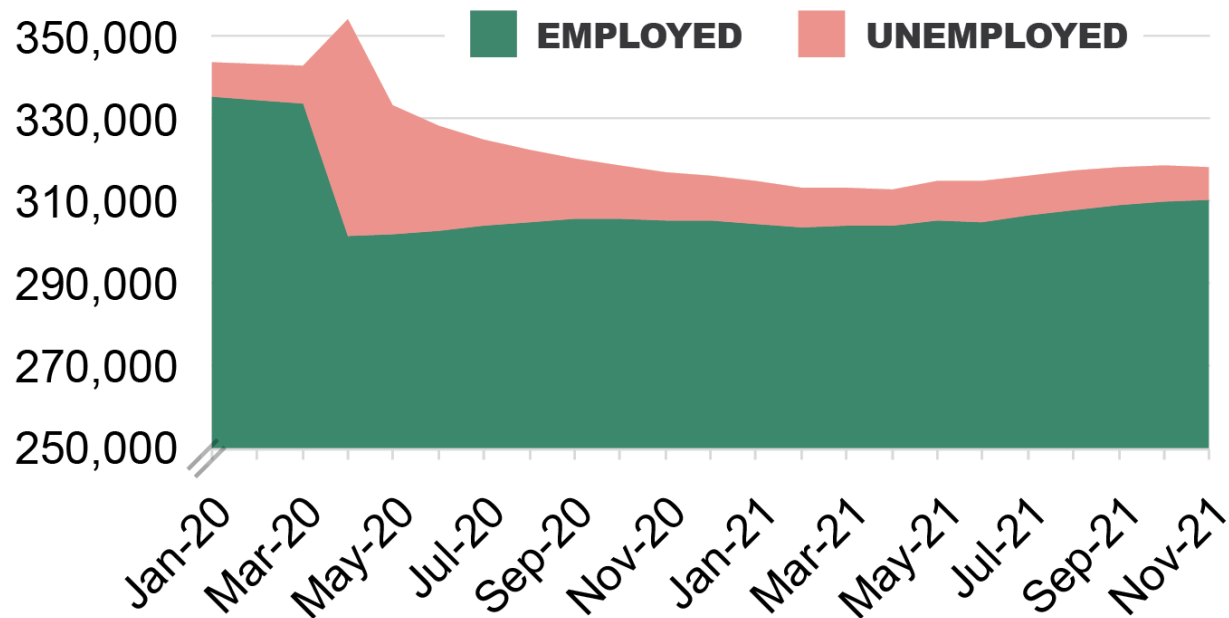


Stephanie Yu
Public Assets Institute
House Committee on Commerce and Economic Development
January 18, 2022

The labor force dropped 25,000 from Jan 2020 to Nov 2021

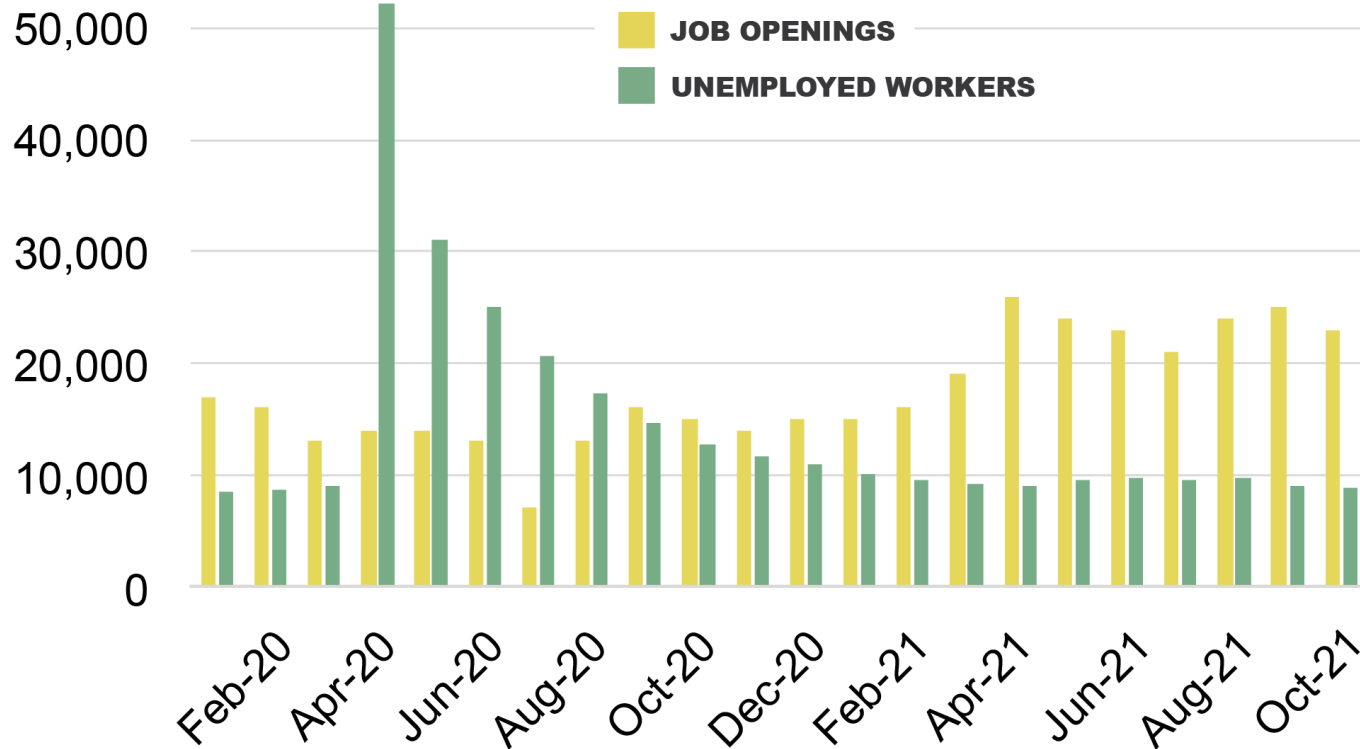
Employed and unemployed Vermonters, by month, Jan 2020-Nov 2021, seasonally adjusted



Data source: Vermont Department of Labor
 ©2021 Public Assets Institute

In 2021 job openings far outnumbered available workers

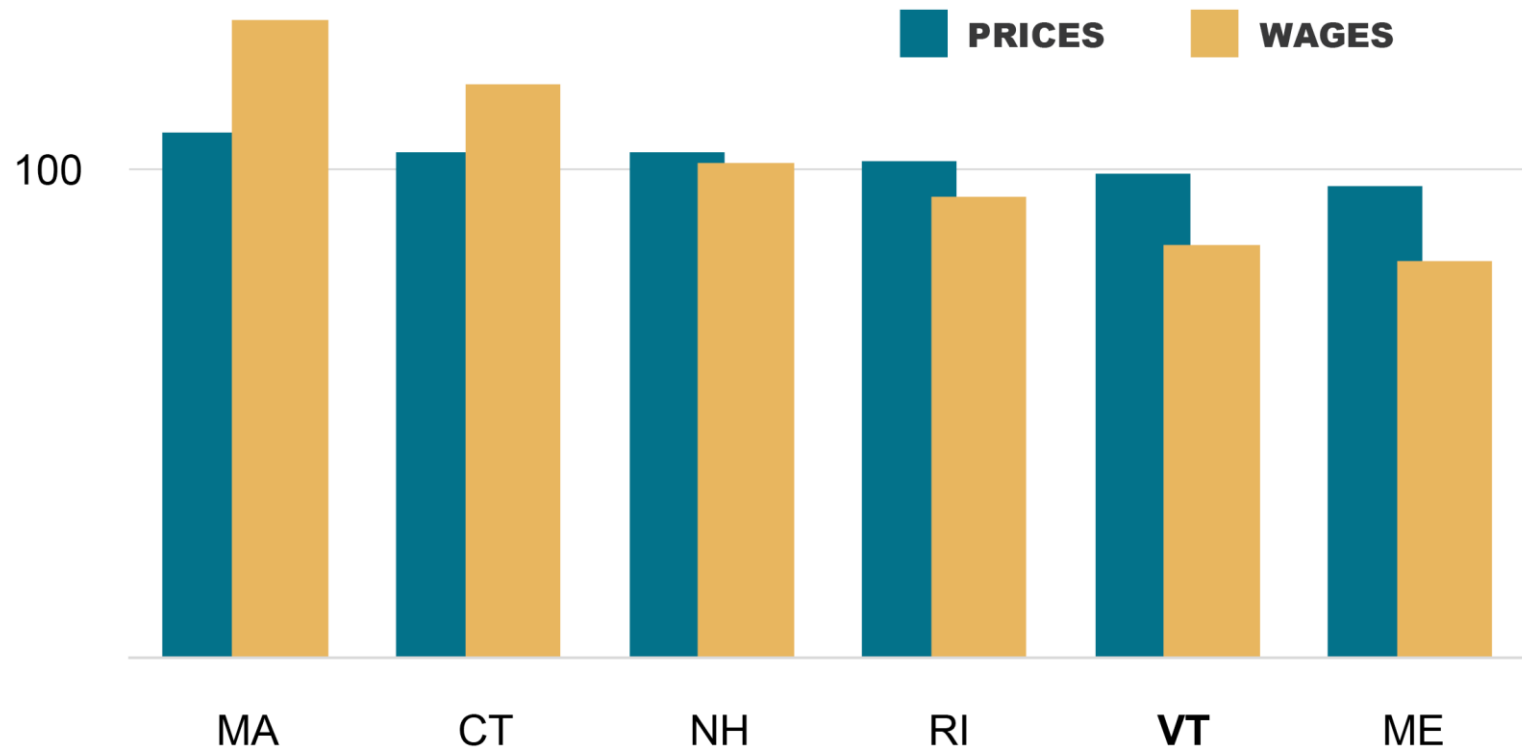
Job openings and unemployed workers by month, seasonally adjusted, 2020-2021



Data sources: Vermont Department of Labor, U.S. Bureau of Labor Statistics
 ©2021 Public Assets Institute

Prices are average, but Vermont wages are low

Index of regional prices and wages, 2020, U.S. = 100

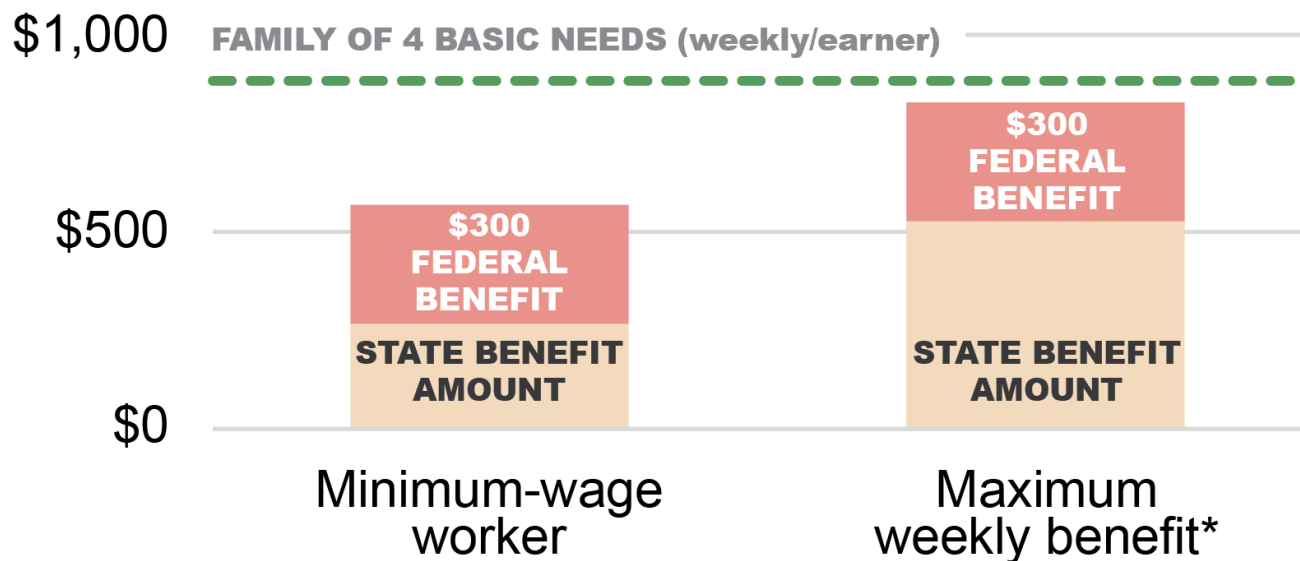


Data sources: U.S. Bureau of Economic Analysis; U.S. Bureau of Labor Statistics

©2021 Public Assets Institute

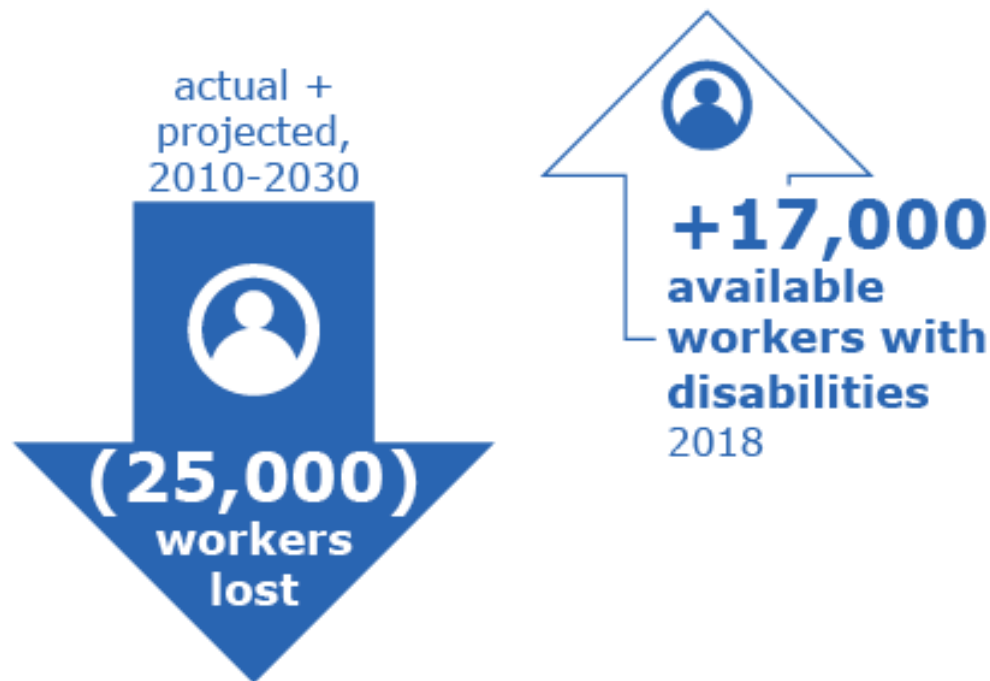
Unemployment benefits plus \$300 left some families short

Estimated weekly unemployment benefits for selected full-time workers, Dec 2020-Sep 2021, cost of basic needs for a family of 4, 2020



*Paid to workers earning Vermont's average weekly wage or higher
 Data sources: Vermont Department of Labor, Joint Fiscal Office

Workers with disabilities could help replenish Vermont's labor force



Data sources: Vermont Department of Labor and IPUMS-USA, University of Minnesota, www.ipums.org, 2014-2018 5-yr. samples
©2020 Public Assets Institute

Questions?

Stephanie Yu

www.publicassets.org

steph@publicassets.org

@PAISteph