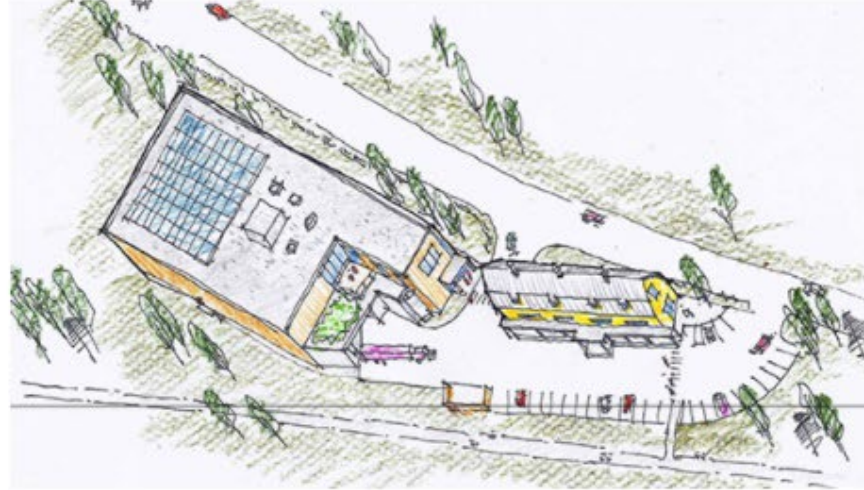


Brownfields

RPCs provided Brownfields assistance in 46 communities.

Environmental site assessments and remediation planning allow properties to be sold or re-developed to benefit the local and state economy, improve public health, facilitate development in designated Downtown and Village Centers, create or protect jobs and increase housing opportunities.



The Yellow Barn in Hardwick

RPCs have assessment grants from EPA, manage 3 revolving loan funds for clean-up, and are utilizing the \$1 million assessment fund allocation from FY 21



Bennington County RPC

Bennington County Regional Commission has continued to integrate land use planning and economic development work through a series of site assessment and reuse studies focusing on brownfield remediation, housing needs and opportunities, commercial and institutional uses, and public outdoor recreation. Two key sites include the former Southern Vermont College campus and the recently idled Energizer Battery manufacturing complex that is adjacent to Bennington's downtown.

Watershed Planning and Project Development

RPCs assisted with clean water activities in 175 communities.

The Municipal Roads Grants-in-Aid Program is a Vermont Agency of Transportation program supported by RPCs. The program provides funding for municipalities to construct Best Management Practices on municipal roads to implement the state Municipal Road General Permit. Last year, 141 municipalities constructed water quality improvements on more than 650 local road segments (approximately 40 miles); in FY 22, we anticipate 230 municipalities to participate.



Infrastructure resiliency project in Thetford



Mount Ascutney RC

Mount Ascutney Regional Commission continued to expand its water quality program. continued to expand its water quality program. The Commission is administering the second round of clean water projects under the Design/Implementation Block Grant of \$1,500,000 from the Vermont Agency of Natural Resources which, to-date, has awarded 44 projects throughout the state.

Economic Development and Community

RPC staff helped 139 communities write and administer grants.

Economic growth is supported best when development efforts are partnered with solid land use planning. The community infrastructure and development patterns that RPCs help plan for and create provide the foundation and public support for private economic development.

RPCs work with municipalities and in partnership with local and Regional Development Corporations in several ways, including creating economic development sections in town and regional plans, helping municipalities plan for and develop critical infrastructure, and developing comprehensive strategies that will help to position Vermont for long-term economic prosperity.



Middlesex Village Development



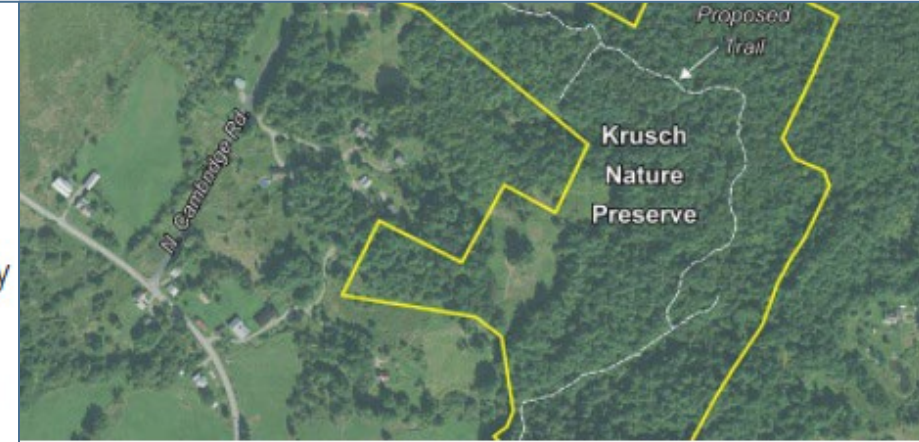
Rutland Regional PC

Rutland Regional Planning Commission continued to grow its economic development planning programs with work on initiatives such as the re-design of Center Street in Rutland City, Otter Creek Communications Union District administration, brownfields redevelopment planning at five new sites, work on the West-Central Economic Development Strategy, enrollment of two new municipalities in the State of Vermont Village Center Program, broadband feasibility and deployment planning, and continued operation of the Rutland Region Workforce Investment Board.

Municipal Planning and Implementation

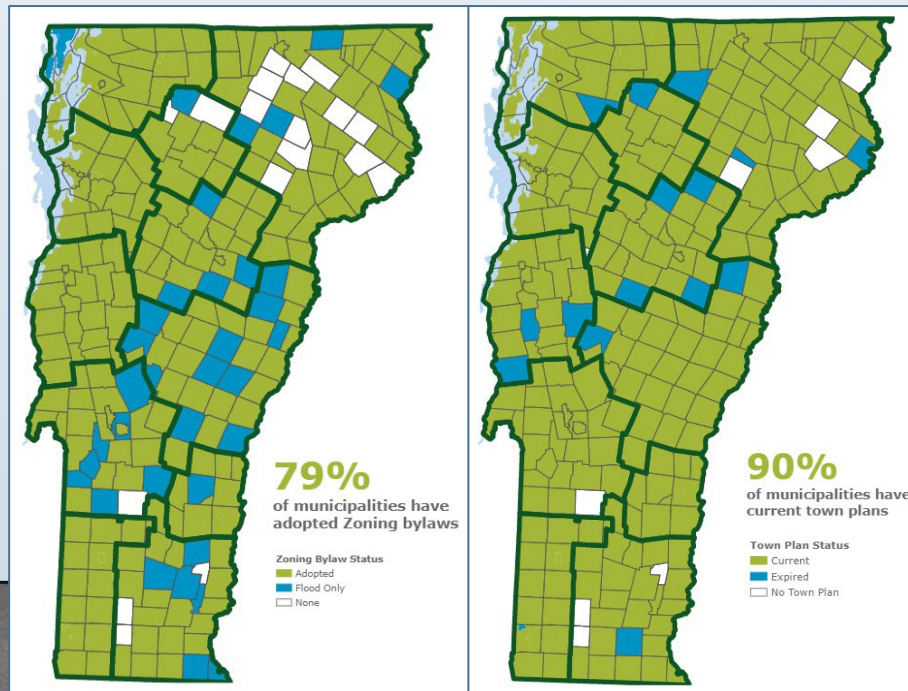
RPCs provided 186 municipalities with planning and bylaw assistance.

Regional Planning Commissions serve as cost-effective professional planning staff for many of Vermont's municipalities and help communities improve town plans and bylaws through education and technical assistance. RPCs have helped municipalities modernize bylaws and implement economic development, flood resiliency planning, energy and forest resources planning initiatives. Current and clear plans and bylaws create a vision for the community and guide smooth local and state permitting.



Lamoille County PC

Lamoille County Planning Commission helped the Town of Cambridge secure a MPG Municipal Planning Grant for the recently acquired Krusch Nature Preserve: 51 acres of mixed forest, meadow, and wetland that gives access to the Cambridge State Forest. The MPG will help the Town develop a Management Plan for the Preserve, as well as interpretive signs to help visitors appreciate the varied landscape of the area. The Preserve is currently open to visitors, although some construction is needed before the official opening.



Geographic Information System Services

RPC staff provided mapping services to 170 communities.

In addition to enhancing the RPC work, RPCs provide municipalities, state agencies, private entities and non-profits with mapping and data analysis in support of their projects.



Translate Page



802-846-4490

OUR WORK

OUR COMMUNITIES

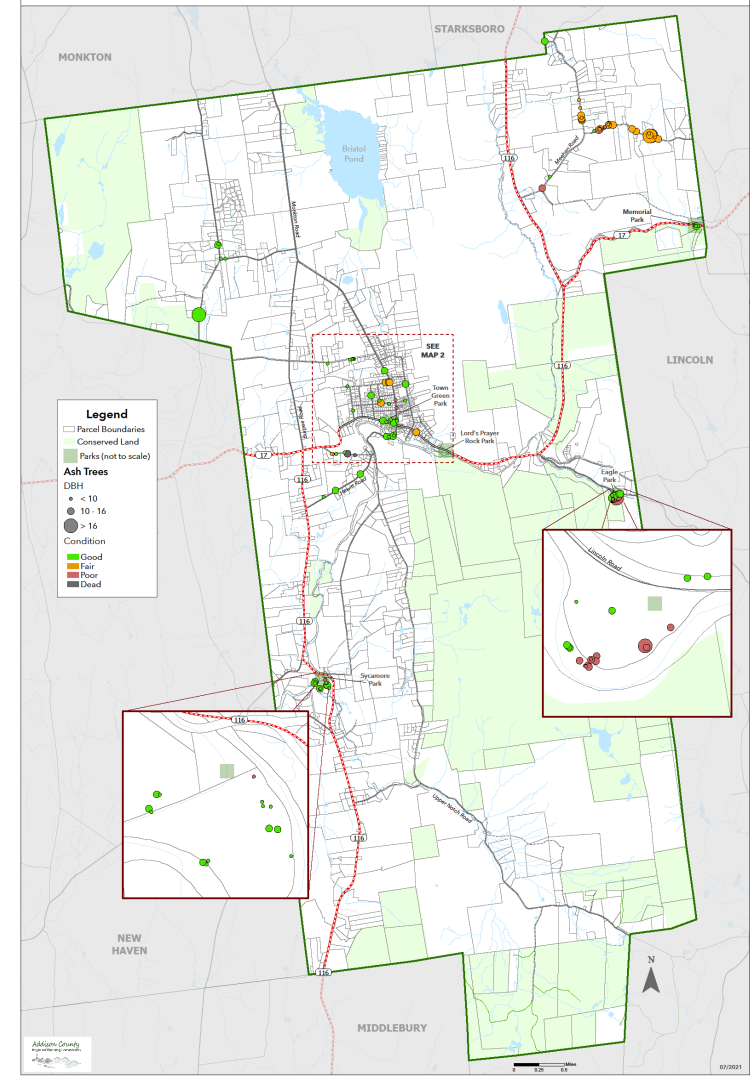
RESOURCES

ABOUT US

GeoHub for Chittenden County

Connecting people with information

Map 1: Emerald Ash Borer Inventory: Bristol, Vermont (2021)



Transportation Planning

RPC staff assisted 153 municipalities with traffic counts, culvert and erosion point inventories and other transportation planning assistance.

Through a contract with Vermont's Agency of Transportation (VTrans), RPCs coordinate the Transportation Planning Initiative (TPI). This effort is a statewide framework for public involvement in planning improvements to Vermont's transportation system and land use patterns, with local communities represented through regional Transportation Advisory Committees (TACs).

Each regional TAC prioritizes projects, identifies local and regional transportation needs, and provides the platform for public involvement in the planning and development of the state's transportation system. RPCs serve as the point of delivery for the statewide transportation planning process to support the local, regional, state and federal transportation network.



Sidewalk construction in Underhill



Northwest Regional PC

Northwest Regional Planning Commission

supported the region's recreational trail economy through implementation of the Missisquoi Valley Rail Trail Marketing and Wayfinding Plan. This included installation of new trail kiosks with interpretive panels, signage, trail markers, two bike fixit stations with air pumps and two bike racks, all funded by a Vermont Outdoor Recreation Economic Collaborative grant. With support from a Northern Border Regional Commission grant, NRPC assisted the Rail Trail Council with developing trail marketing materials.

Emergency Preparedness and Disaster Resiliency

RPCs assisted with emergency planning in 259 municipalities.

RPCs play key roles in the mitigation and preparedness phases of emergency management in partnership with Vermont Emergency Management, VTTrans, and the Agency of Natural Resources. RPCs provide staff to the State Emergency Operations Center, support to local emergency management directors and coordinators, Local Emergency Management Plan assistance, and coordination among responders and planners throughout the State's Public Safety Districts. RPCs also help update floodplain and river corridor bylaws and FEMA-required hazard mitigation plans, arrange trainings and assist municipalities during disaster events.



Storm damage assessment in Cabot

Windham Regional Commission Announces Federal Funding to Support Resiliency Zones in Partnership with Green Mountain Power

Grafton, Athens, Brookline, Rockingham, Brattleboro, Townshend, and Putney



Energy Conservation and Development

RPCs assisted with the creation of enhanced energy plans in 83 communities.

A focus on clean, renewable, sustainable and affordable energy presents Vermont with great opportunity and significant challenges. RPCs integrate energy planning with land use, transportation and natural resources efforts, and work with municipalities to assist with project planning and implementation. RPCs participate in Section 248 proceedings and support comprehensive planning at the local and regional level to guide the permitting process.



Solar panels behind the Shelburne Museum

With special funding in FY21, RPCs expanded capacity in Climate and Energy work, in many cases hiring new staff to support municipal implementation of the state's Climate Action Plan and Energy Plan.

PLANNING for EQUITY

VIRTUAL SUMMIT

Building Toward Racial
and Economic Justice in
Chittenden County

Chittenden County Regional Planning Commission

Chittenden County Regional Planning Commission outlined its commitment to racial equity and dismantling systemic racism in its work. Efforts included signing on to the community declaration of racism as a public health emergency; assisting VTrans with a RAISE grant application to develop a transportation equity framework; working with VTrans to revamp its annual project selection and prioritization process to incorporate equity criteria; and, together with a VT-based equity consultant, undertaking an organizational equity audit, planning a regional summit, and working with municipalities, partners, and formal and informal community leaders to advance anti-racist practices.



Central Vermont RPC

Central Vermont Regional Planning Commission facilitated the *Greater Barre Working Communities* planning effort to create a nimble workforce development system that achieves economic stability and improved quality of life for single moms. The multi-sector team framed changes it could implement to modernize the workforce development system and support employers and employees. CVRPC then authored a successful grant application, resulting in a \$300k award to implement the team's ideas.

Let's do the
numbers...

Who did ReVTA
support?



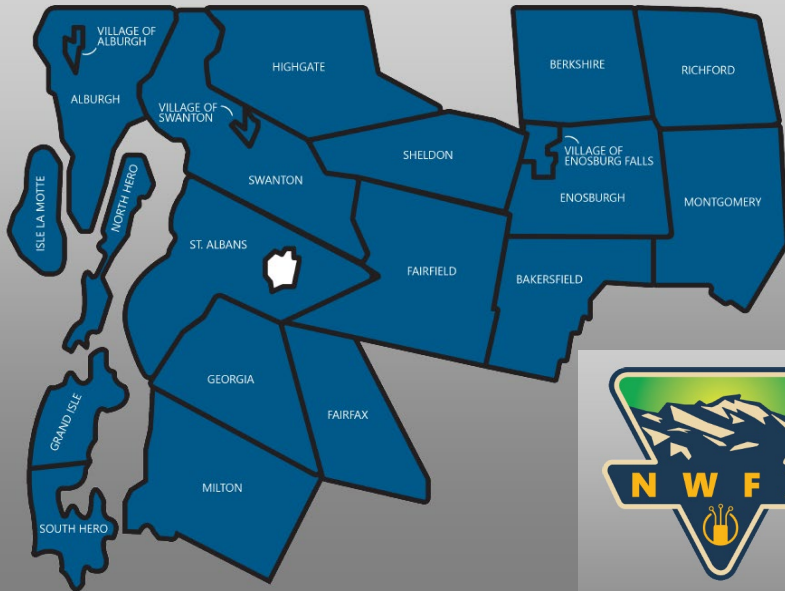
Northeastern Vermont Dev. Association

Northeastern Vermont Development Association received a \$600k EPA Assessment Coalition Grant. Coalition partners are the Towns of Lyndon and St. Johnsbury, and the City of Newport. We will inventory and prioritize sites, conduct Phase 1 and 2 environmental site assessments, and prepare cleanup and re-use plans. NVDA also obtained a \$1M grant from the Northern Border Regional Commission to close a pandemic-related budget gap in the Hardwick Yellow Barn. NVDA participated in the Restart Vermont Technical Assistance Program and provided more than \$80k in technical assistance to 32 NEK businesses.

New Initiatives

Communications Union District Support

Member Communities



AMERICAN RESCUE PLAN ACT OF 2021

Addison County
REGIONAL PLANNING COMMISSION



Clean Water Service Provider

Funding opportunities for projects that improve
water quality in the Otter Creek Basin



Presented by:

Tasha Wallis, Lamoille County Planning Commission

Catherine Dimitruk, Northwest Regional Planning Commission

Peter Gregory, Two Rivers-Ottauquechee Regional Commission

For More Information:

www.vapda.org

