

# Policy, Planning & Intermodal Development Division

## Overview Presentation

---

MICHELE BOOMHOWER, DIRECTOR  
JANUARY 17, 2019

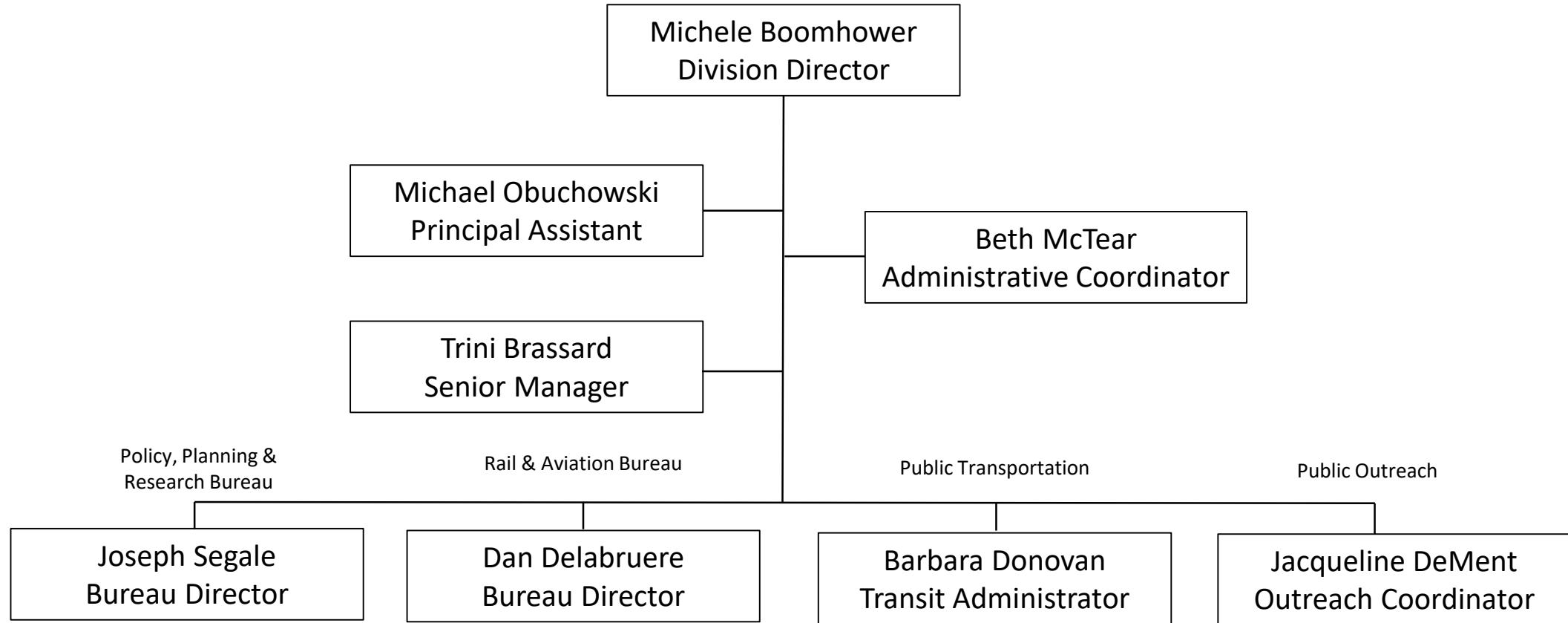
SENATE TRANSPORTATION COMMITTEE





# Agency of Transportation

## Policy, Planning, & Intermodal Development Division



# Priority Focal Areas

## 1. Growing the Vermont Economy

- Coordinating with Agency of Commerce and Community Development and the Public Service Department to lease state-owned transportation Rights-of-Way at competitive rates to facilitate the continued expansion of solar and broadband.
- Making strategic investments in rail and aviation transportation facilities to recruit new businesses and help expand existing ones.

## 2. Making Vermont Affordable

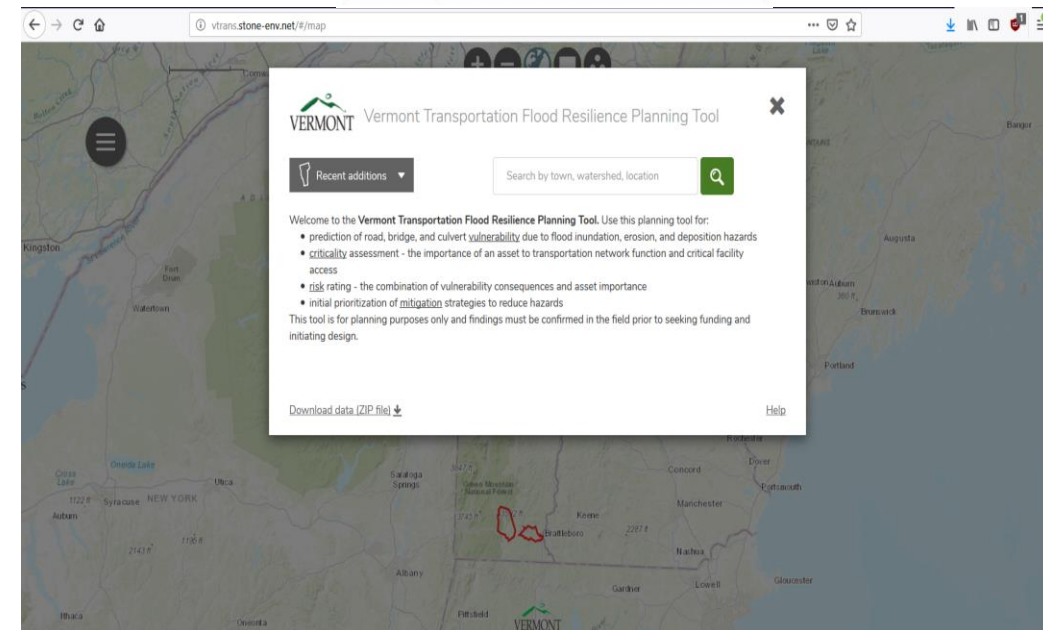
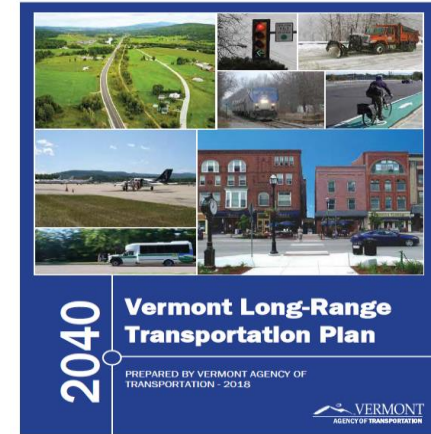
- Making strategic investments in electric vehicle, public transit and park and ride infrastructure to lower household transportation costs.
- Balancing transportation revenue generation while providing a quality system.

## 3. Protecting our Vulnerable Population

- Assuring vulnerable populations have access to transportation services.
- Use of new and advancing technologies to expand transportation service options.

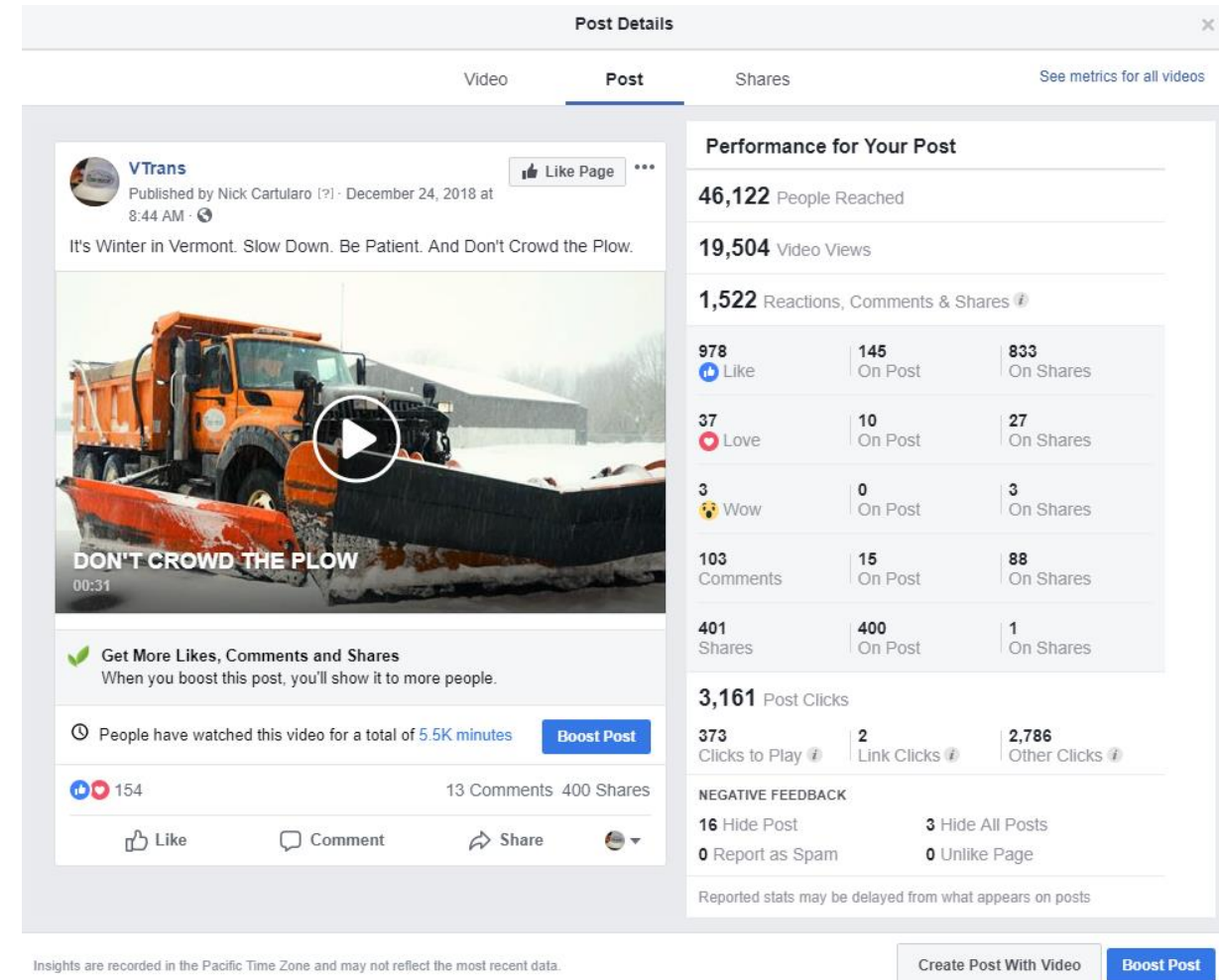
# Policy, Planning & Research Major Accomplishments

- Completed 2040 Vermont Long Range Transportation Plan
- Completed Transportation Resilience Planning Tool
- VW Settlement Collaboration on Electric Vehicle Charging Station Grants and Electric Buses
- Design of Electric Vehicle Incentive Program
- Undertook Research Projects related to workforce, materials, asset management and the environment, and held major Research Symposium
- Drafted Automated Vehicle Testing Legislation & Collaborated with New England States to Develop a Roadmap for Implementing Cross-State AV Initiatives



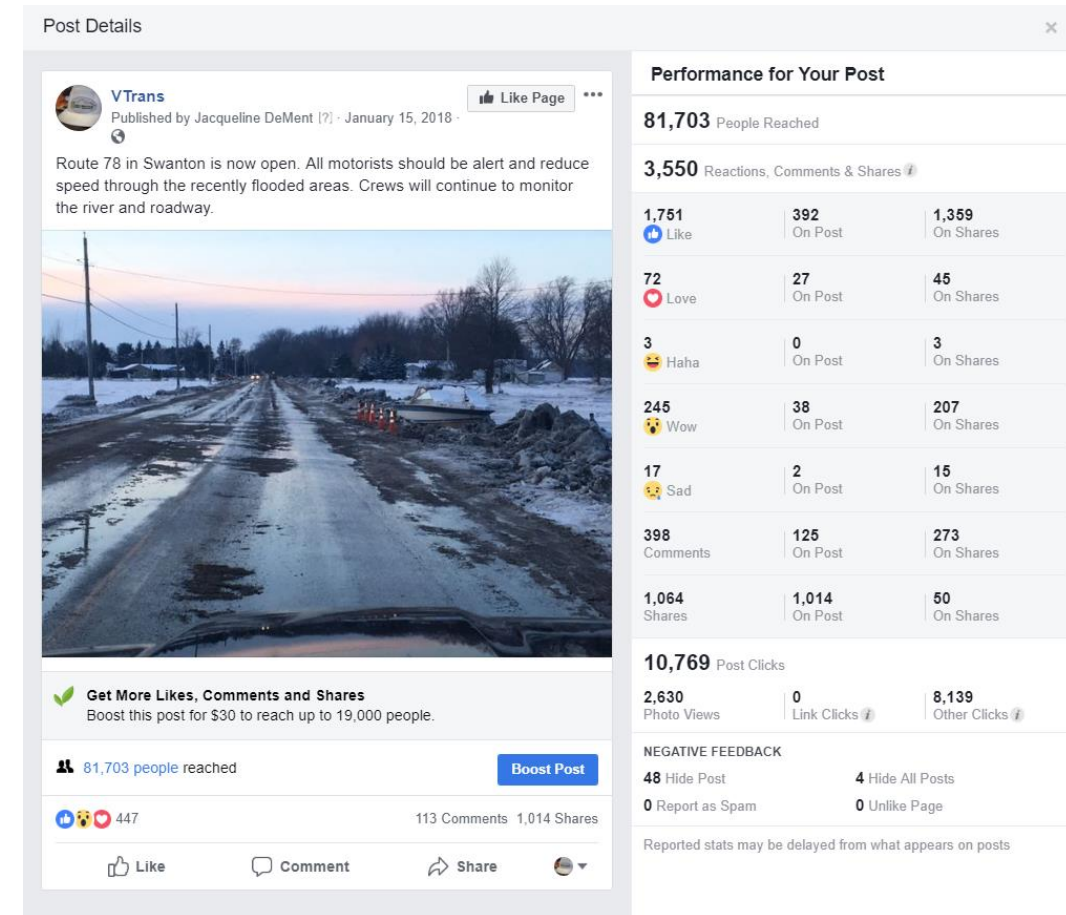
# Public Outreach Major Accomplishments

- Managed new consolidated contract for outreach services that is used for large or impactful infrastructure projects - will allow for increased oversight of public outreach consultants and a more consistent communication experience for Agency customers.
- Expanded the Agency's ability to communicate with and to educate customers on social media, through the creation of an Instagram and general Twitter account. This is in addition to the Agency's Facebook page, which has over 20,000 followers, and the 511-based Twitter account.



# Public Outreach Major Accomplishments

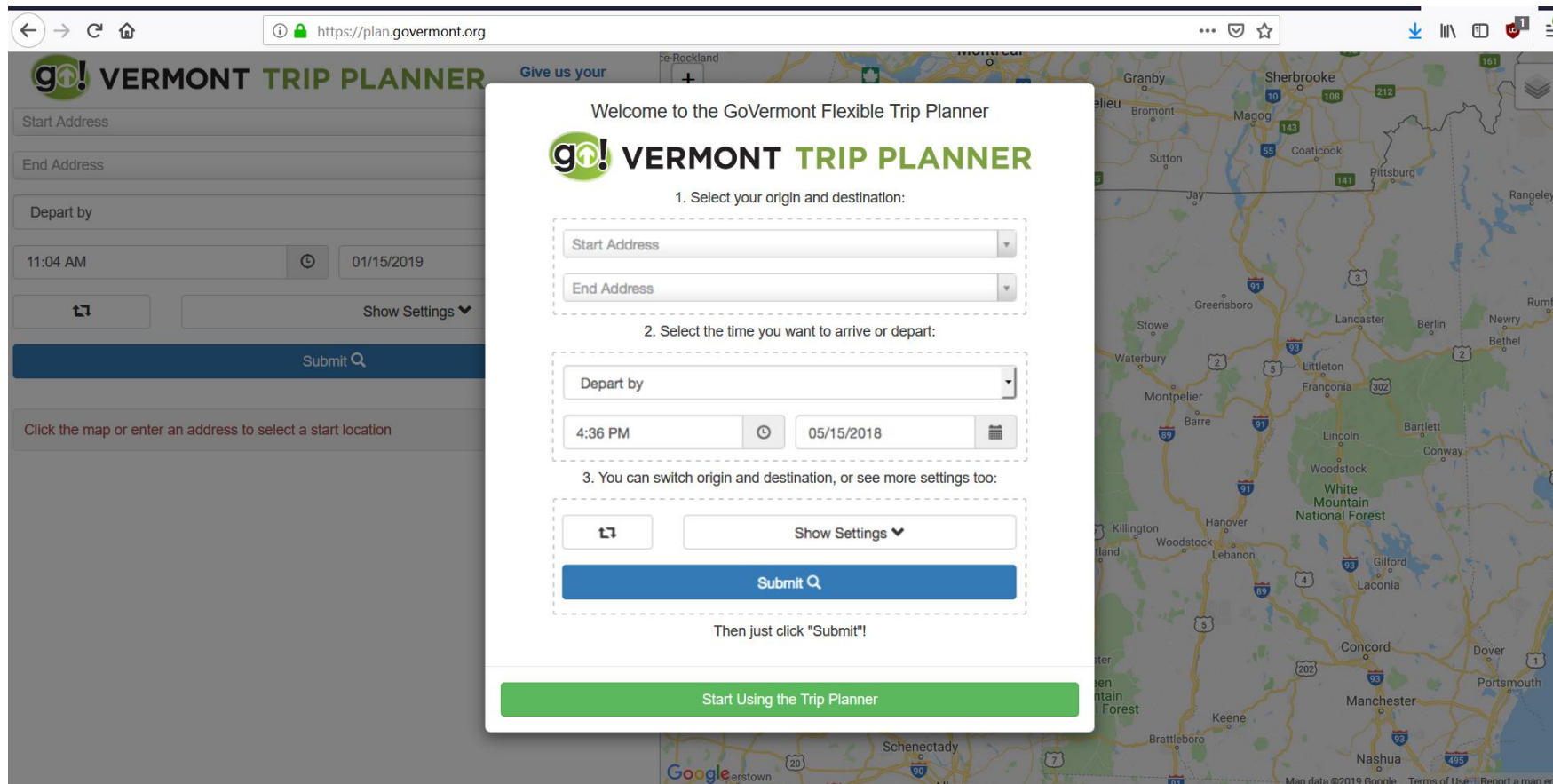
- Continued data automation efforts to the Agency's Fact Book, which will save staff time and improve accuracy.
- Created a new in-house TV and radio PSA for winter safety, saving the Agency tens of thousands of dollars that otherwise would be spent on consultant creative development.
- Coordinated media experts from AASHTO to deliver a media training to Agency leaders. Approximately 35 staff members were trained.
- The On The Road program continues to successfully inform and engage motorists about construction activities and other transportation topics. The column is a favorite in many of the State's daily newspaper columns, and receives accolades from readers every week.





# Public Transit Major Accomplishments

- **Innovation** – Launched the first of it's kind flexible trip planner showing rural transit options currently unavailable through major trip planners such as Google Maps.



The image shows a screenshot of a web browser displaying the Vermont Trip Planner website. A modal window is open in the center, titled "Welcome to the GoVermont Flexible Trip Planner". The modal contains the following steps and fields:

1. Select your origin and destination:  
Start Address:   
End Address:
2. Select the time you want to arrive or depart:  
Depart by:   
4:36 PM  05/15/2018
3. You can switch origin and destination, or see more settings too:

Then just click "Submit"!

The background of the website shows a map of Vermont with various towns and roads labeled. The browser's address bar shows "https://plan.vermont.org".

# Public Transit Major Accomplishments

- **Intercity Bus Services** – Ridership continued its steady increase on existing VT Routes 4 & 7 and more slowly on the Greyhound service between WRJ and Springfield, MA. The new Vermont Shires service between Manchester and Albany has shown growth.
- **Capital Shuttle** - Year Round Service between Downtown – Dept. of Labor – National Life.
- **Expanded Resort Service, Stowe** – Increased shuttle service in support of Vail investments at Stowe Mountain Resort.

**Mountain Road Shuttle**

**FREE!**

**Track The Bus!**  
Download FREE GPS APP "Ride Systems" & select GMTA as your agency.

For more information on Stowe area resources, visit [gostowe.com](http://gostowe.com)  
Please call 223-7287 to verify the early season schedule.

The map displays the Mountain Road Shuttle route in Stowe, Vermont, with 11 numbered stops. Key locations include Spruce Peak Base/Performing Arts Center, Mansfield Base, Stowe Mountain Resort, Topnotch, Edson Hill Road at Rt. 108, Stoweflake, Village Green, Town & Country Resort, Town Hall, and Commodores Inn. The Stowe Vermont logo is also visible on the map.



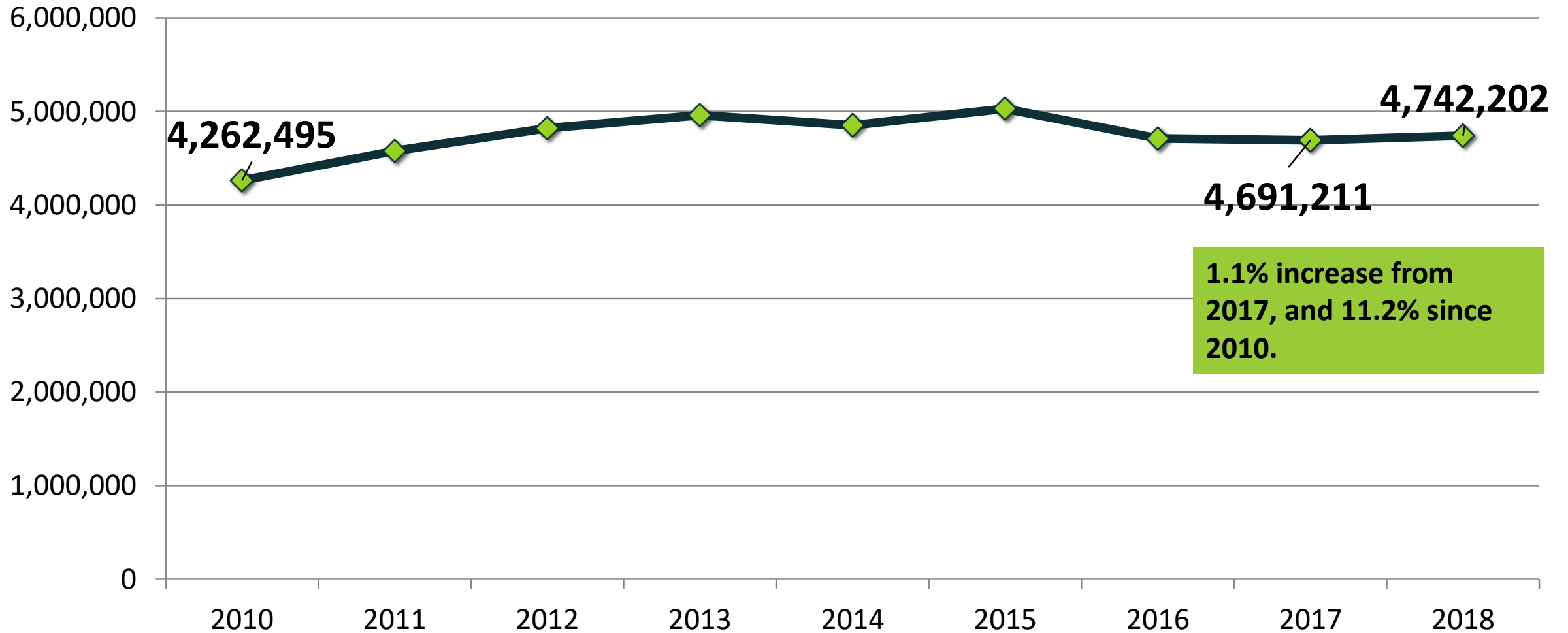
# Public Transit Major Accomplishments

- **Transit Facilities** – Awarded a \$2 million FTA competitive grant for bus facility in Bradford.
- **Electric Transit Buses** - Awarded a \$400,000 FTA competitive grant to purchase 2 small electric buses for Green Mountain Transit to use in the capital area in collaboration with BGS and Green Mountain Power.



# Public Transit Major Accomplishments

## Public Transit Ridership by Federal Fiscal Year



# Aviation Major Accomplishments

- **Morse Airport Bennington** – Rehabilitated entire 3,704 ft of runway 13-31, and added 2,500 feet of new parallel taxiway.
- **Rutland Airport** - Added 2,520 ft of 50 ft wide parallel taxiway to runway 1-19. Total taxiway length is now 4,320.
- **Middlebury Airport** - Added 5,145 ft of new perimeter fencing. The entire airport is now fenced in.





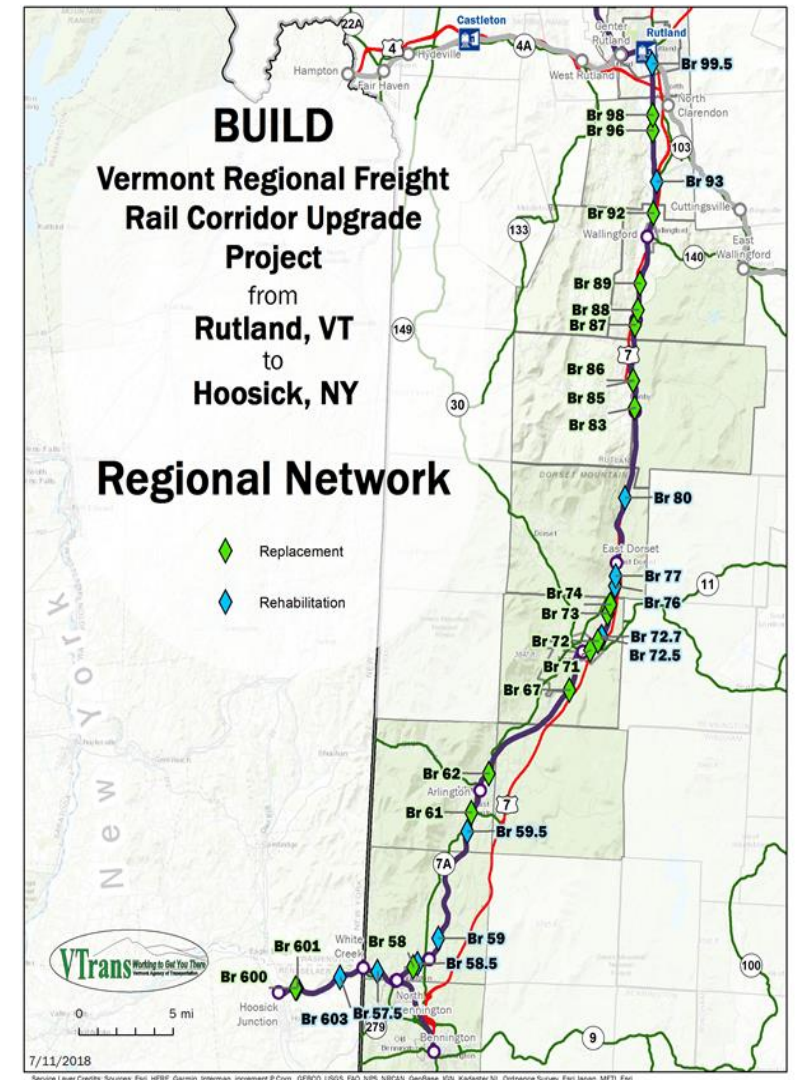
# Rail Major Accomplishments

- **Amtrak Service to Burlington** - The final crossings and bridges to accommodate Ethan Allen Amtrak service are currently under construction contracts, or in active design.
- **Amtrak Service to Montreal** - Continuing to work on the agreement for Customs and Border Protection at the Montreal rail station.



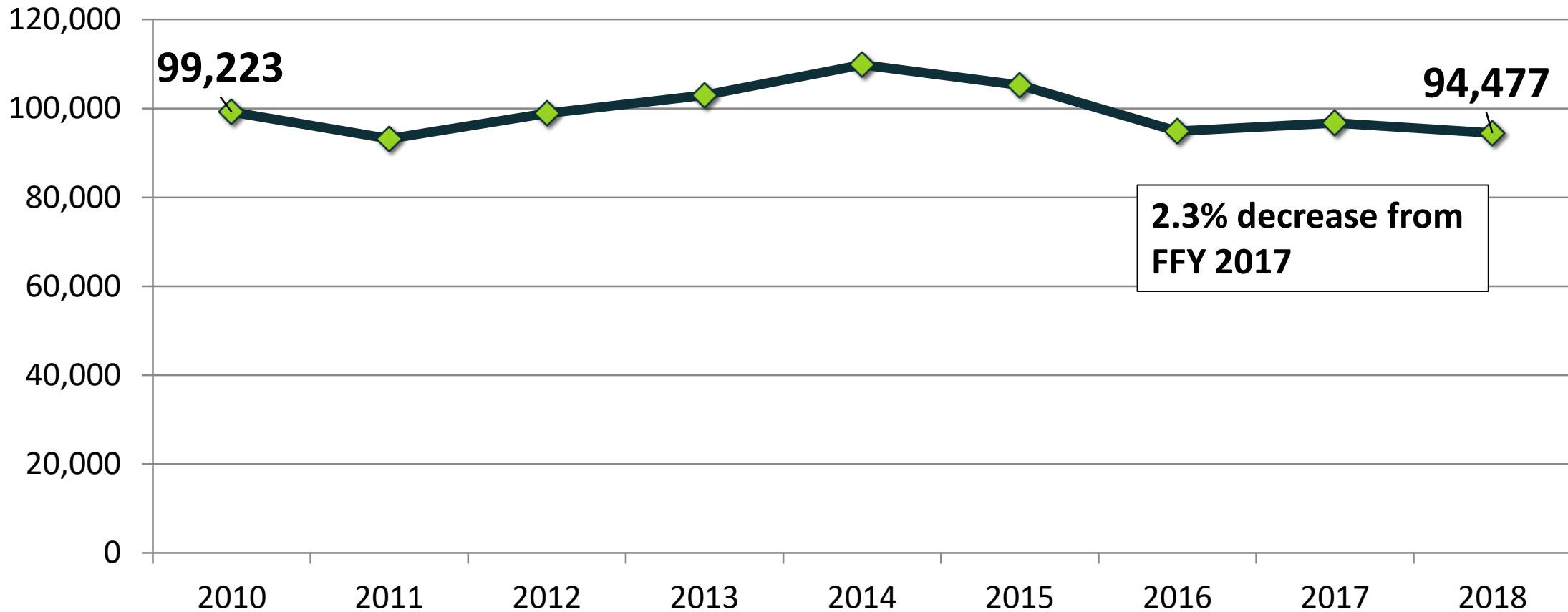
# Rail Major Accomplishments

- **Bridge Replacements** - Replaced bridges 63 (71ft) and 64 (163 ft) in Sunderland on the Vermont Railway B&R. This brings the capacity of these two bridges beyond 286,000lbs.
- **Rail Bridge Load Ratings** - All rail bridges under state jurisdiction (174) were load rated as of 09/17 to meet FRA requirements: 135 (78%) have the capacity to carry 286,000lb rail cars; 39 (22%) do not.
- **BUILD Grant** - awarded a \$20 million USDOT grant to rehabilitate and upgrade 31 rail bridges along the western corridor between Rutland and Hoosick, NY to the 286,000lbs standard. Total project cost is \$31.8 million over 5 years.





# Passenger Rail Ridership by Federal Fiscal Year



# Policy, Planning & Intermodal Development Division Overview Presentation

**Questions / Comments?**