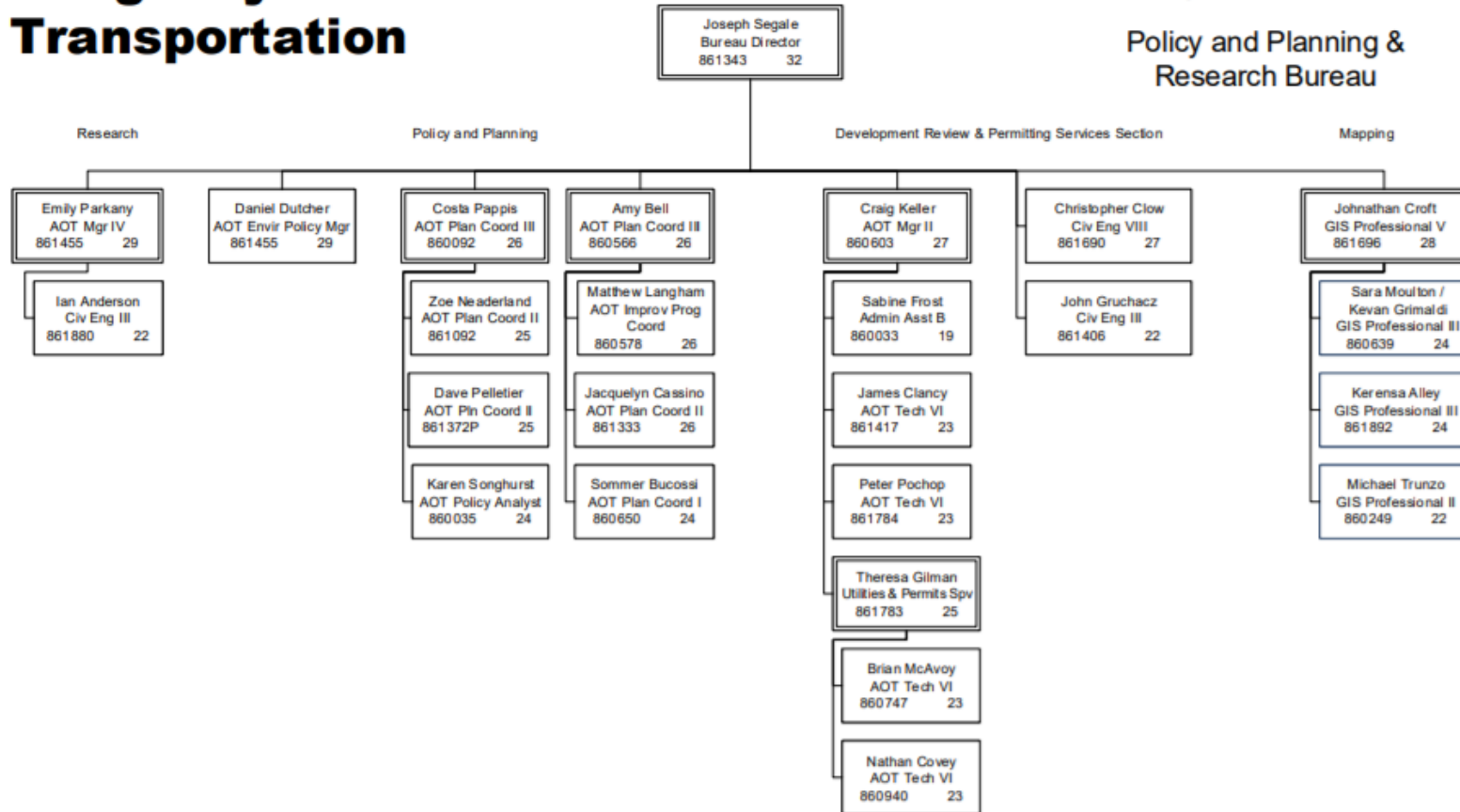




Agency of Transportation

Policy, Planning, & Intermodal Development Division

Policy and Planning & Research Bureau



FY19
Updated 09 07 2018

POLICY & PLANNING SECTION

- Flood Vulnerability and Risk Tool complete and expanding
- 2040 Long Range Transportation Plan complete
- Automated Vehicles Testing Draft Legislation and Multi-State Coordination
- Modal Plans (Freight Plan, Aviation Plan, Transit Plan underway, Bike-Ped Plan coming up)
- Federal Grant Applications (Awarded \$20M - Vermont Regional Freight Rail Corridor Upgrade Project and \$2 M - Vermonter Amtrak Safety Project. Pending - Vermont Rural Bridges and VT Route 9 Flood Mitigation Project)
- Corridor Planning (VT 100-108 complete. US 7 Georgia and VT 30 underway)
- MAP-21/FAST Act Rule Making Monitoring and Implementation
- Environmental Policy Management (Energy Profile, EVs, Climate Change, Water Quality, Air Quality, Wildlife)
- Legislative Report – Feasibility Evaluation of Electric Vehicle Charging Stations, Electric Aircraft Charging Stations, and Renewable Energy Generating Plants at State-Owned Airports
- National and International Coordination, State Interagency Coordination
- STIP Management
- [Better Connections Grant](#) (9 projects completed since 2015, 3 underway in Danville, Enosburg Falls and Hyde Park)

TRANSPORTATION PLANNING INITIATIVE & MPO COORDINATION

- Funding to 10 Regional Planning Commissions and the Chittenden County RPC/MPO
- Cooperation and coordination between VTrans, RPCs and Municipalities
- Regional input to project prioritization
- Local transportation planning and technical assistance
- Road, bridge and culvert inventories, Municipal Roads General Permit support

TRANSPORTATION PLANNING INITIATIVE ACCOMPLISHMENTS				
Enhance cooperation and coordination between Agency, RPCs and municipalities	Better connect Federal, regional and statewide transportation planning	Provide technical assistance to municipalities	Advance Agency Strategic and Long-Range Transportation Plans	Provide a mechanism for improved public outreach and education
234 Municipalities actively engaged in regional transportation planning	11 Current regional transportation plans	43% Transportation budget spent on municipal technical assistance.	341 Data collection activities conducted for Agency	152 Municipalities assisted with transportation related grants

MAPPING SECTION

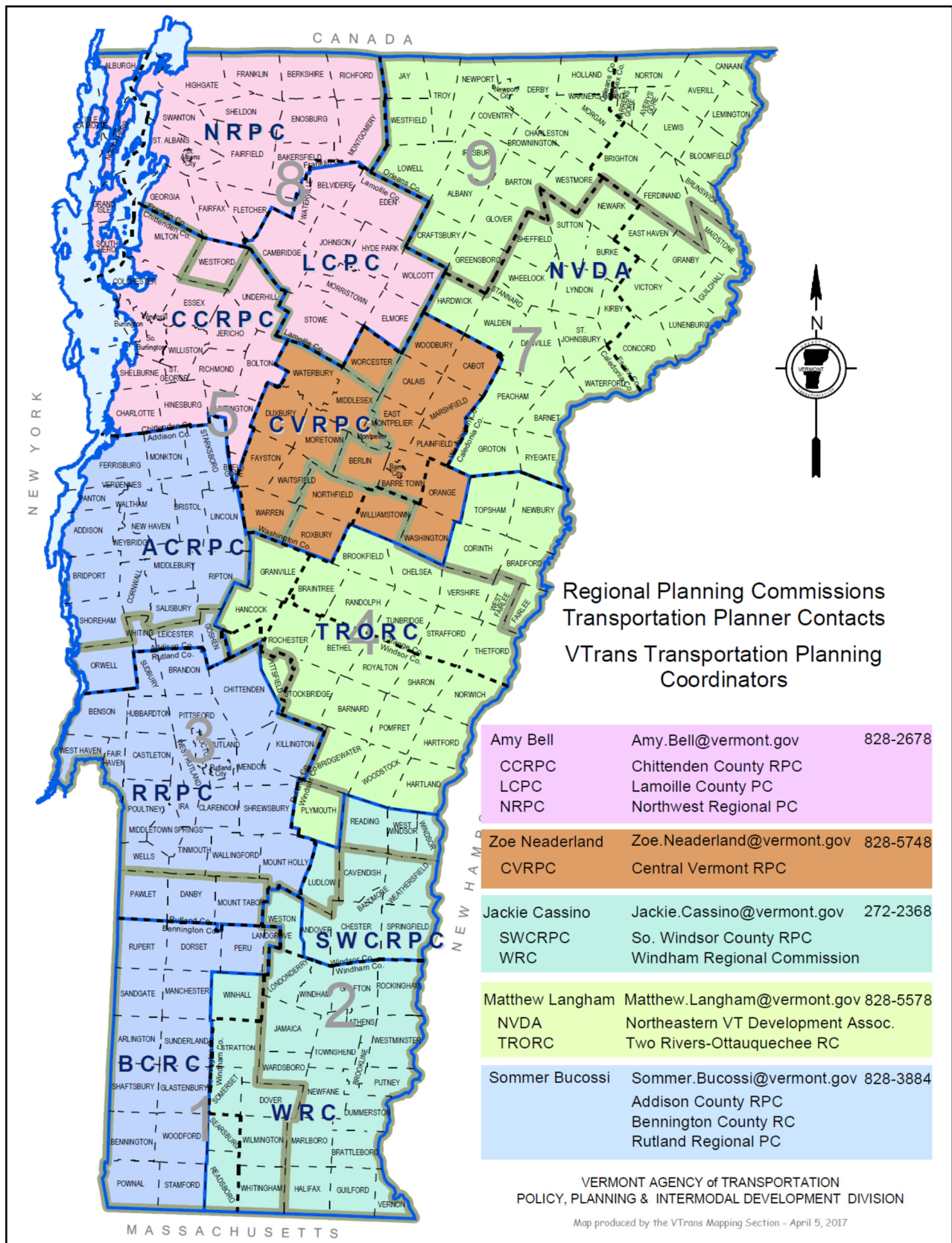
- Town Highway Maps and Mileage Certifications (71 of 316 TH Maps updated)
- Federal Highway and National Highway System Data Management and Classification
- Cartography and GIS Spatial Analysis Services
- Town highway reclassification review

RESEARCH SECTION

- Eight research projects completed (accelerated bridge construction, workforce retention, strategies to reduce wildlife mortality on highways and unmanned aircraft systems)
- VTrans Research Symposium (28 projects)
- VTrans-UVM Transportation Research Collaborative
- New England Transportation Consortium, TRB and AASHTO participation

PERMITTING SERVICES: ACT 250 AND SECTION 1111 COMMERCIAL PERMITS

- 250-300 Commercial and 400 Utility/Misc. Section 1111 Permits Annually
- Review and comment on Act 250 permits & Act 145-Transportation Impact Fee Management



Policy, Planning and Research Bureau Contacts

Contact	Topics
<p>Joe Segale, P.E./PTP Policy, Planning and Research Bureau Director 802-477-2365 Joe.segale@vermont.gov</p>	<ul style="list-style-type: none"> • Bureau Management • Flood resilience • Corridor Planning • Automated Vehicles
<p>Costa Pappis, CPM, AICP CTP Policy & Planning Manager 802-828-5790 costa.pppis@vermont.gov</p>	<ul style="list-style-type: none"> • Statewide Transportation Planning • Modal Plans • Grants • National & International Policy Coordination
<p>Amy Bell Planning Coordinator 802-828-2678 Amy.bell@vermont.gov</p>	<ul style="list-style-type: none"> • Transportation Planning Initiative • Chittenden County RPC and Metropolitan Planning Organization Representative • State Transportation Improvement Program
<p>Daniel D. Dutcher Environmental Policy Manager 802-498-4540 daniel.dutcher@vermont.gov</p>	<ul style="list-style-type: none"> • Climate Change • Electric Vehicles • Wildlife • Water Quality • Air Quality
<p>Johnathan Croft Mapping Section Chief 802-828-2600 johnathan.croft@vermont.gov</p>	<ul style="list-style-type: none"> • Town highway maps and mileage certification • Roadway re-classification • GIS for Transportation
<p>Craig S. Keller, P.E. Chief of Permitting Services 802-279-1152 craig.keller@vermont.gov</p>	<ul style="list-style-type: none"> • Permits to Work in State ROW (Section 1111 Permit)
<p>Christopher Clow, P.E. Transportation Engineer 802-828-0513 christopher.clow@vermont.gov</p>	<ul style="list-style-type: none"> • Act 250 Traffic Impact Study Review • Act 145 Transportation Impact Fees
<p>Dr. Emily Parkany, P.E. Research Manager 802-272-6862 emily.parkany@vermont.gov</p>	<ul style="list-style-type: none"> • Agency research projects • UVM Research Project Management • Northeast and US National Research Programs