

## Support Services Bureau Overview



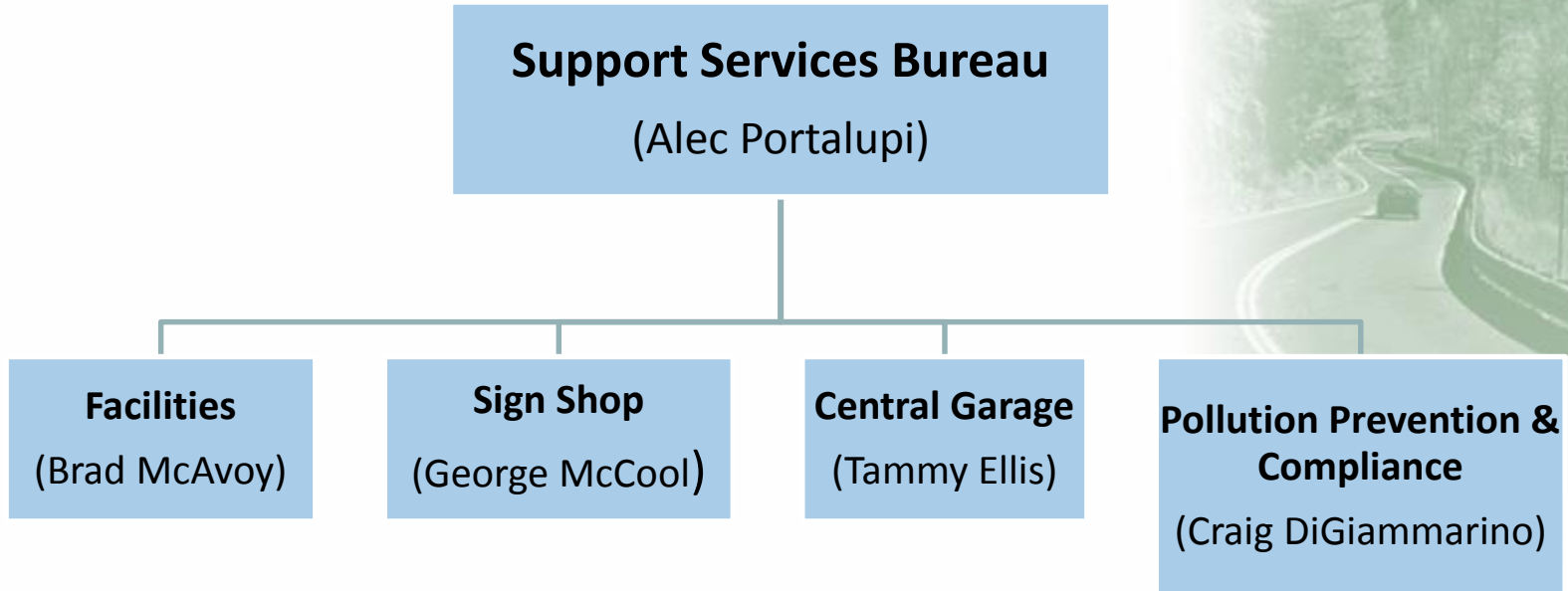
**Presented on:** January 23, 2019

**Presented by:**

Alec Portalupi

Director, Support Services Bureau

# Support Services Bureau



## Facilities Section:

- Staff: 4
- Facilities: 64
- Buildings: +/- 400
  - Garages
  - Offices
  - Cold storage
  - Tempered heat storage



## Facilities Section:

- 50 to 75 projects annually
- 50 facilities retainer contracts
- 10 to 12 engineering contracts

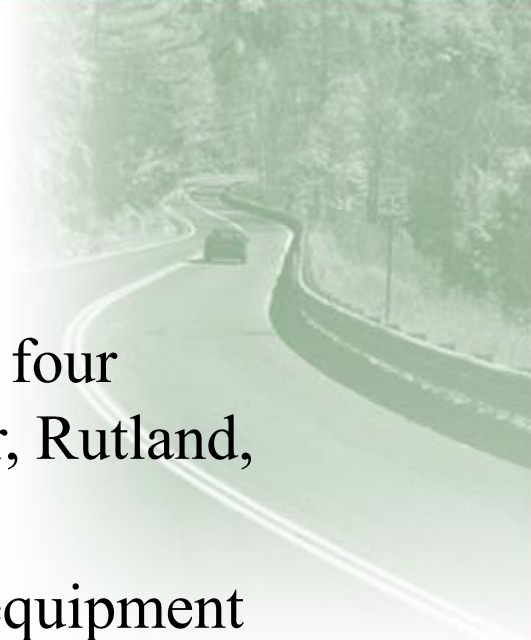


## Sign Shop:

- Staff: 3
- Fabrication, reconditioning/salvage, installation, procurement of various types of roadside signs.
- Generally install the larger (Type B) signs, while the regional sign shops install the smaller (Type A) signs.

## Central Garage:

- Staff: 51
- Facilities: Central Garage (Berlin), plus four regional mechanics facilities (Colchester, Rutland, Lyndonville, WRJct.)
- Manage Agency's fleet of vehicles and equipment (250 plow trucks, ~ 200 pickups, loaders, graders, etc.).



## Pollution Prevention & Compliance Section:

- Staff: 8
- Water Quality / Stormwater Unit:
  - Stormwater permitting and compliance management on VTrans roads and facilities.
  - Manage pesticide spray program.
- Hazardous Materials & Waste Mgt Unit:
  - Fuel storage tank program, hazardous site management, water supply operations, HazMat spill response.
  - Lead & Asbestos exposure review.
  - HazMat & Waste training for VTrans employees.



## **Other Responsibilities:**

The Support Services Bureau director is currently responsible for the following programs, which will transition to other bureaus over the next few months.

- Town Highway Grants:
  - Class 2 Town Highway
  - Town Highway Structures
  - Town Highway Emergency
- FEMA Public Assistance Program (older disasters)
- FHWA Emergency Relief Program