

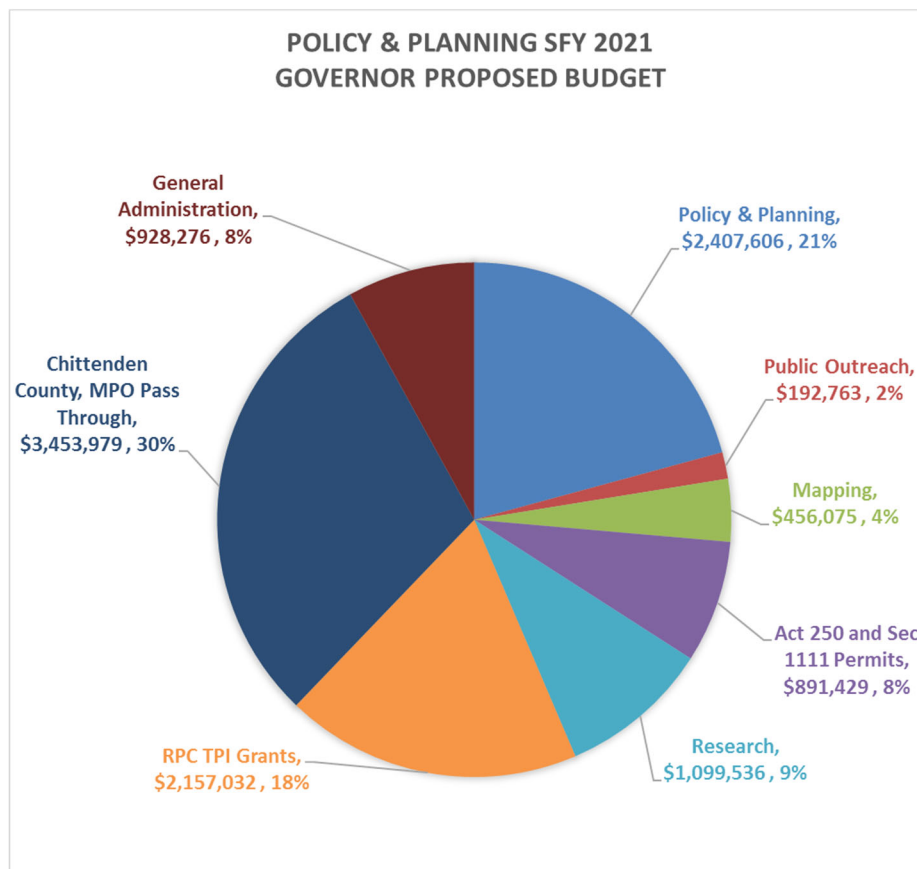
# Policy & Planning

## SFY 2021 Proposed Budget



Expenditures	SFY 2020 As	SFY 2021 Budget	Change
	Passed	Target	
Personal Services	4,274,546	4,227,395	-1.1%
Operating	\$ 902,092	\$ 1,000,651	10.9%
Grants	\$ 6,015,583	\$ 6,358,650	5.7%
<b>Totals</b>	<b>\$ 11,192,221</b>	<b>\$ 11,586,696</b>	<b>3.5%</b>

Funding Sources	SFY 2020 As	SFY 2021 Budget	Change
	Passed	Target	
State Transportation Fund	\$ 2,921,480	3,039,596	4.0%
Federal Funds	\$ 8,238,741	8,529,250	3.5%
Interdepartmental Transfers	\$ 32,000	17,850	-44.2%
<b>Totals</b>	<b>\$ 11,192,221</b>	<b>\$ 11,586,696</b>	<b>3.5%</b>



---

**POLICY PLANNING & INTERMODAL DEVELOPMENT DIVISION ADMINISTRATION (4 FTE)**

---

- Division Director's Office and Administrative Support
  - Operational costs
- 

**POLICY & PLANNING SECTION (7 FTE)**

---

- Legislative Support
  - Strategic Plan and 2040 Long Range Transportation Plan
  - Flood Vulnerability and Risk Planning
  - Better Connections Program
  - Automated Vehicles Testing Act Implementation and Multi-State Coordination
  - Modal Plans (Rail Plan, Freight Plan, Aviation Plan, Transit Plan, Bike-Ped Plan)
  - Federal Grant Applications
  - Corridor Planning (VT 30 Wrapping up, VT 9 and US 4 next)
  - MAP-21/FAST Act Reauthorization Monitoring and Implementation
  - Electric Vehicle Initiatives (PEV Incentive Program, Fast Charge Grants, EV User Fees)
  - Environmental Policy Management (TCI Participation, High MPG/Emission Repair, Energy Profile, Climate Change, Water Quality, Air Quality, Wildlife, Smart Growth, Permit Efficiency)
  - Legislative Reports – Feebate, Weight Based Registration Fees, Rail Master Licensing Agreements, Transit Optimization
  - National and International Coordination, State Interagency Coordination
- 

**TRANSPORTATION PLANNING INITIATIVE & MPO COORDINATION (2 FTE)**

---

- Funding to 10 Regional Planning Commissions and the Chittenden County RPC/MPO
  - Cooperation and coordination between VTrans, RPCs and Municipalities
  - Regional input to project prioritization
  - Local transportation planning and technical assistance
  - Road, bridge and culvert inventories, Municipal Roads General Permit support
  - State Transportation Improvement Program management
- 

**PUBLIC OUTREACH (2 FTE)**

---

- VTrans Fact Book and Annual Report
  - Social Media and Media Management, VTransparency, VTrans Website
  - Public outreach during construction and year-round public education
- 

**MAPPING SECTION (5 FTE)**

---

- Town Highway Maps and Mileage Certifications (41 of 316 TH Maps updated)
  - Federal Highway and National Highway System Data Management and Classification
  - Cartography and GIS Spatial Analysis Services
  - Town highway additions, reclassification and discontinuance review
- 

**RESEARCH SECTION (2 FTE)**

---

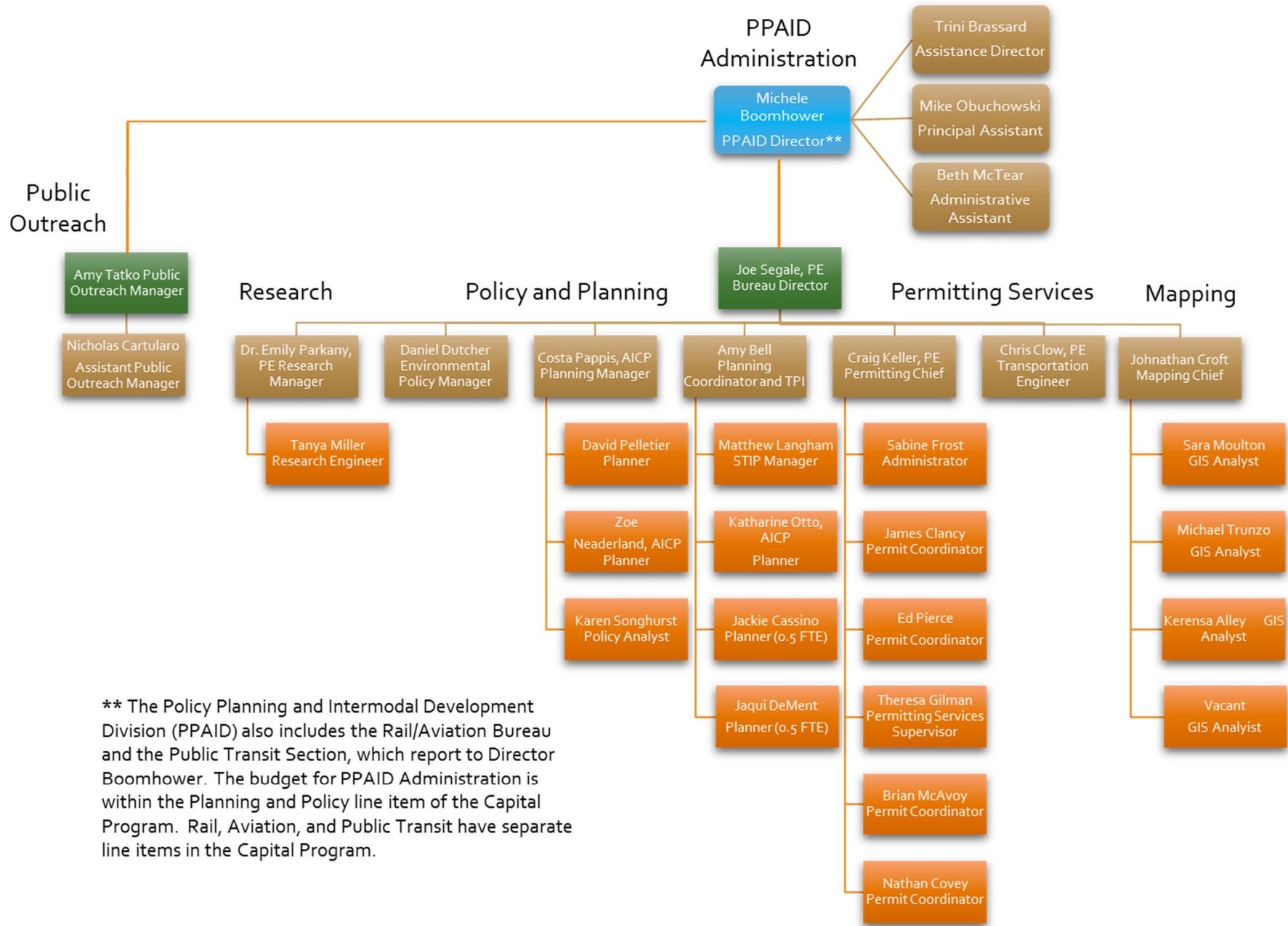
- Example Projects: Quantifying Nutrient Pollution Reductions Achieved by Erosion Remediation Projects on Vermont's Roads, Reclaimed Stabilized Base, and Enhancements of Low-Cost Culvert Explorer
  - VTrans Research Showcase in September (24 projects)
  - VTrans-UVM Transportation Research Collaborative, expanding to additional VT Institutions of Higher Ed.
  - New England Transportation Consortium, TRB/NCHRP and AASHTO participation
- 

**PERMITTING SERVICES: ACT 250 AND SECTION 1111 COMMERCIAL PERMITS (8 FTE)**

---

- 414 State Highway ROW Work and Access Permits in 2019 (384 issued, 28 withdrawn, 2 denied)
  - Review and comment on Act 250 permits & Act 145-Transportation Impact Fee Management
-

# Policy and Planning Organization Chart



\*\* The Policy Planning and Intermodal Development Division (PPAID) also includes the Rail/Aviation Bureau and the Public Transit Section, which report to Director Boomhower. The budget for PPAID Administration is within the Planning and Policy line item of the Capital Program. Rail, Aviation, and Public Transit have separate line items in the Capital Program.

Contact	Topics
<p><b>Joe Segale, P.E./PTP</b>  <b>Policy, Planning and Research Bureau Director</b>  802-477-2365  <a href="mailto:Joe.segale@vermont.gov">Joe.segale@vermont.gov</a></p>	<ul style="list-style-type: none"> <li>• Bureau Management</li> <li>• Flood resilience</li> <li>• Corridor Planning</li> <li>• Automated Vehicles</li> </ul>
<p><b>Amy Tatko</b>  <b>Public Outreach Manager</b>  802-498-8025  <a href="mailto:Amy.Tatko@Vermont.gov">Amy.Tatko@Vermont.gov</a></p>	<ul style="list-style-type: none"> <li>• Social Media and Media Management, VTransparency, VTrans Website</li> <li>• Public outreach during construction and year-round public education</li> <li>• VTrans Fact Book and Annual Report</li> </ul>
<p><b>Costa Pappis, CPM, AICP CTP</b>  <b>Policy &amp; Planning Manager</b>  802-793-5049  <a href="mailto:costa.pppis@vermont.gov">costa.pppis@vermont.gov</a></p>	<ul style="list-style-type: none"> <li>• Statewide Transportation Planning</li> <li>• Modal Plans</li> <li>• Grants</li> <li>• National &amp; International Policy Coordination</li> </ul>
<p><b>Amy Bell</b>  <b>Planning Manager</b>  802-279-0783  <a href="mailto:Amy.bell@vermont.gov">Amy.bell@vermont.gov</a></p>	<ul style="list-style-type: none"> <li>• Transportation Planning Initiative</li> <li>• Chittenden County RPC and Metropolitan Planning Organization Representative</li> <li>• State Transportation Improvement Program</li> </ul>
<p><b>Daniel D. Dutcher, J.D., Ph.D.</b>  <b>Environmental Policy Manager</b>  802-498-4540  <a href="mailto:daniel.dutcher@vermont.gov">daniel.dutcher@vermont.gov</a></p>	<ul style="list-style-type: none"> <li>• Climate Change</li> <li>• Electric Vehicles</li> <li>• Wildlife</li> <li>• Water Quality</li> <li>• Air Quality</li> </ul>
<p><b>Johnathan Croft</b>  <b>Mapping Section Chief</b>  802-828-2600  <a href="mailto:johnathan.croft@vermont.gov">johnathan.croft@vermont.gov</a></p>	<ul style="list-style-type: none"> <li>• Town highway maps and mileage certification</li> <li>• Roadway re-classification</li> <li>• GIS for Transportation</li> </ul>
<p><b>Craig S. Keller, P.E.</b>  <b>Chief of Permitting Services</b>  802-279-1152  <a href="mailto:craig.keller@vermont.gov">craig.keller@vermont.gov</a></p>	<ul style="list-style-type: none"> <li>• Permits to Work in State ROW (Section 1111 Permit)</li> </ul>
<p><b>Christopher Clow, P.E.</b>  <b>Transportation Engineer</b>  802-522-4901  <a href="mailto:christopher.clow@vermont.gov">christopher.clow@vermont.gov</a></p>	<ul style="list-style-type: none"> <li>• Act 250 Traffic Impact Study Review</li> <li>• Act 145 Transportation Impact Fees</li> </ul>
<p><b>Dr. Emily Parkany, P.E.</b>  <b>Research Manager</b>  802-272-6862  <a href="mailto:emily.parkany@vermont.gov">emily.parkany@vermont.gov</a></p>	<ul style="list-style-type: none"> <li>• Agency research projects</li> <li>• External Research Project Management</li> <li>• Northeast and US National Research Programs</li> </ul>

## 2019 Transportation Planning Initiative Goals and Performance Measures

