

# Unlock the potential of Scrag Forest...

...let's protect and improve  
our town forest  
for current and future generations.

Many of us in The Valley have long enjoyed the incredibly diverse recreational opportunities, such as hiking, bird-watching, snowshoeing, backcountry skiing, and hunting, in Waitsfield's Scrag Town Forest. Located 10 minutes from the Waitsfield Village, the 640-acre property includes unbroken forestland, pristine streams, waterfalls, a high elevation beaver pond, habitat for a vast array of wildlife and plants, productive timberland, and more than one mile of undeveloped ridgeline along the Northfield Mountains.

**We now have a now or never opportunity to acquire and permanently protect a 110-acre forested parcel that is a critical gateway to the Town Forest.**

This land is currently privately owned and adjoins the southerly boundary of the Scrag Forest. The parcel provides the only legal way to get to the otherwise inaccessible Town Forest. While the Town currently has limited rights-of-way over the parcel for logging and public access, these are inadequate for meeting the public's needs.

**Let's act today to prevent its sale for development.  
Let's protect and improve our town forest for current and future generations.**



## Our Economy

This forest will...

- enhance the attractiveness of Waitsfield to visitors and bolster our local economy, by providing expanded opportunities for outdoor recreation
- increase access and the town's sustainable management for timber and wildlife habitat
- support the local forest economy and provide revenue for the Town through sustainable forest management, maple sugaring, and timber harvests.

## Our Environment

This forest will...

- protect sensitive headwater streams that are critical to water quality and flood resilience
- sustain intact habitat for wildlife and plants, and connectivity with adjoining forestlands.
- provide a scenic forested backdrop to our town along the Northfield Mountain range.

## Our Quality of Life

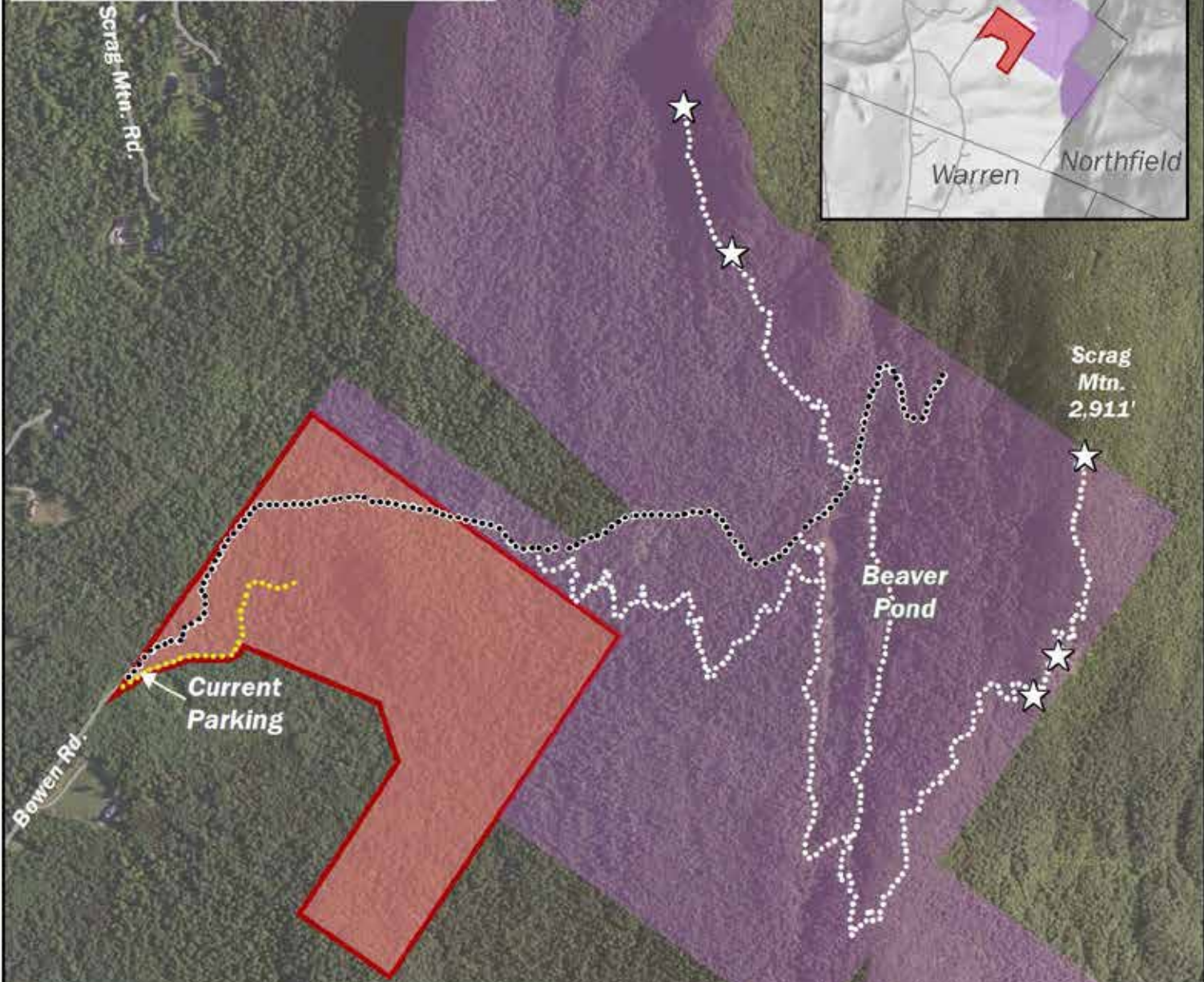
This forest will...







- have an improved parking lot and trailhead, and a new pedestrian trail network.
- provide an expanded area for four-season recreation, such as hiking, snowshoeing, and hunting.
- increase educational and experiential opportunities for local schools.

## Why now?

If this land is sold for development, current informal access over this land will end, and the Town will be forever limited in its access to the town forest.

# Scrag Forest Gateway Project



-  Addition to Town Forest
-  Town Forest
-  Existing Trails
-  Proposed Trails
-  Interior Driveway
-  Scenic Overlook





## More than 77% of the land's total cost has already been raised!

- The US Forest Service has committed \$256,500 in a competitive grant
- The Vermont Housing and Conservation Board committed \$125,000
- The landowner is generously selling the property for approximately \$200,000 less than its full value
- Request of funding pending from the Town of Waitsfield's Restroom, Recreation and Conservation Fund: \$40,000
- We still need charitable contributions from community members for \$75,000 to acquire and protect the land.
- We are also seeking an additional \$50,000 in private donations to help create a network of trails in the expanded Scrag Forest.

This combination of federal, state, municipal, and private funding will enable Waitsfield to seize this now-or-never opportunity to secure the gateway to its cherished Scrag Forest, ensuring it serves the landscape and communities in the Mad River Valley and the State of Vermont for generations to come.

For more information, please visit: [www.waitsfieldvt.us](http://www.waitsfieldvt.us)  
To make a gift online go to: [www.vlt.org/scragforest](http://www.vlt.org/scragforest)

**For more information,  
please contact:**

**Liza Walker**  
Vermont Land Trust  
[liza@vlt.org](mailto:liza@vlt.org)  
(802) 496-3690

**Phil Huffman**  
Waitsfield Conservation  
Commission Chair  
[phil@madriver.com](mailto:phil@madriver.com)  
(802) 496-3490

**Cindy Carr**  
Community Member  
(802) 229-8495



# Vermont Land Trust

CONSERVING LAND FOR THE FUTURE OF VERMONT