

VERMONT POPULATION, LABOR FORCE AND EDUCATION DEMOGRAPHICS

Governor Phil Scott | 2020 Legislative Priorities
January 9, 2020



VERMONT POPULATION BY AGE

Age	2018	2017	2010	2000	2018	2017	2010	2000
0-4	28,810	30,096	31,952	33,989	4.6%	4.8%	5.1%	5.6%
5-14	65,957	66,810	72,291	86,498	10.5%	10.7%	11.6%	14.2%
15-19	42,229	40,017	46,012	45,770	6.7%	6.4%	7.4%	7.5%
20-34	118,537	121,331	113,473	112,419	18.9%	19.5%	18.1%	18.5%
35-54	150,808	152,012	180,962	195,721	24.1%	24.4%	28.9%	32.1%
55-64	96,083	96,241	89,973	56,920	15.3%	15.4%	14.4%	9.3%
65+	123,875	117,150	91,078	77,510	19.8%	18.8%	14.6%	12.7%
Total	626,299	623,657	625,741	608,827				

Source: 2017 & 2018 American Communities Survey (1-year estimates); 2000 & 2010 Decennial Census

65+ POPULATION BY COUNTY

County	Population 65+
Chittenden	14.1%
Franklin	14.9%
Lamoille	16.1%
Vermont	18.2%
Washington	18.5%
Addison	18.5%
Caledonia	19.3%
Grand Isle	19.4%
Orange	19.6%
Rutland	20.7%
Windham	21.0%
Orleans	21.7%
Windsor	22.0%
Bennington	22.0%
Essex	24.6%

Source: 2014-2018 American Communities Survey (5-year estimates)

LABOR FORCE & POPULATION

Year	Labor Force	Population	Ratio
2000	331,404	609,618	54.4%
2001	337,065	612,223	55.1%
2002	343,139	615,442	55.8%
2003	345,971	617,858	56.0%
2004	347,673	619,920	56.1%
2005	350,766	621,215	56.5%
2006	357,007	622,892	57.3%
2007	353,739	623,481	56.7%
2008	354,899	624,151	56.9%
2009	359,836	624,817	57.6%
2010	359,402	625,880	57.4%
2011	358,108	626,979	57.1%
2012	354,857	626,063	56.7%
2013	350,447	626,212	56.0%
2014	347,058	625,218	55.5%
2015	344,627	625,197	55.1%
2016	344,807	623,644	55.3%
2017	346,135	624,525	55.4%
2018	346,061	626,299	55.3%

 = Peak Labor Force

LABOR FORCE PARTICIPATION BY COUNTY

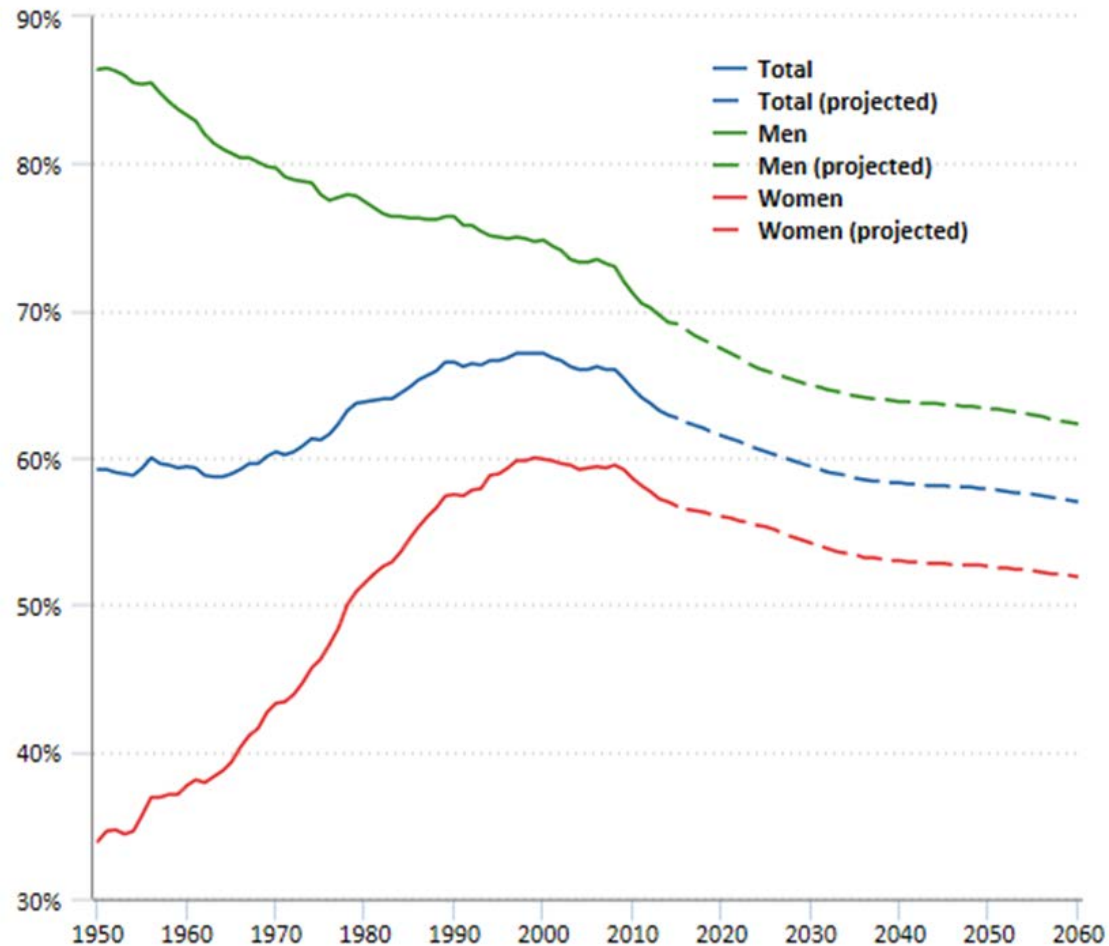
County	Labor Force Participation Rate
Essex	55.4
Orleans	57.5
Caledonia	60.3
Bennington	61.4
Rutland	62.6
Windham	63.7
Windsor	63.8
Vermont	65.8
Grand Isle	65.8
Orange	66.9
Addison	66.9
Washington	67.1
Lamoille	68.5
Franklin	69.2
Chittenden	69.5

Labor force participation rate is the percent of the population 16 years and older that is in the labor force (either employed or unemployed)

Source: 2014-2018 American Communities Survey (5-year estimates)

THE GENERAL TREND

Labor force participation rates are projected to decline

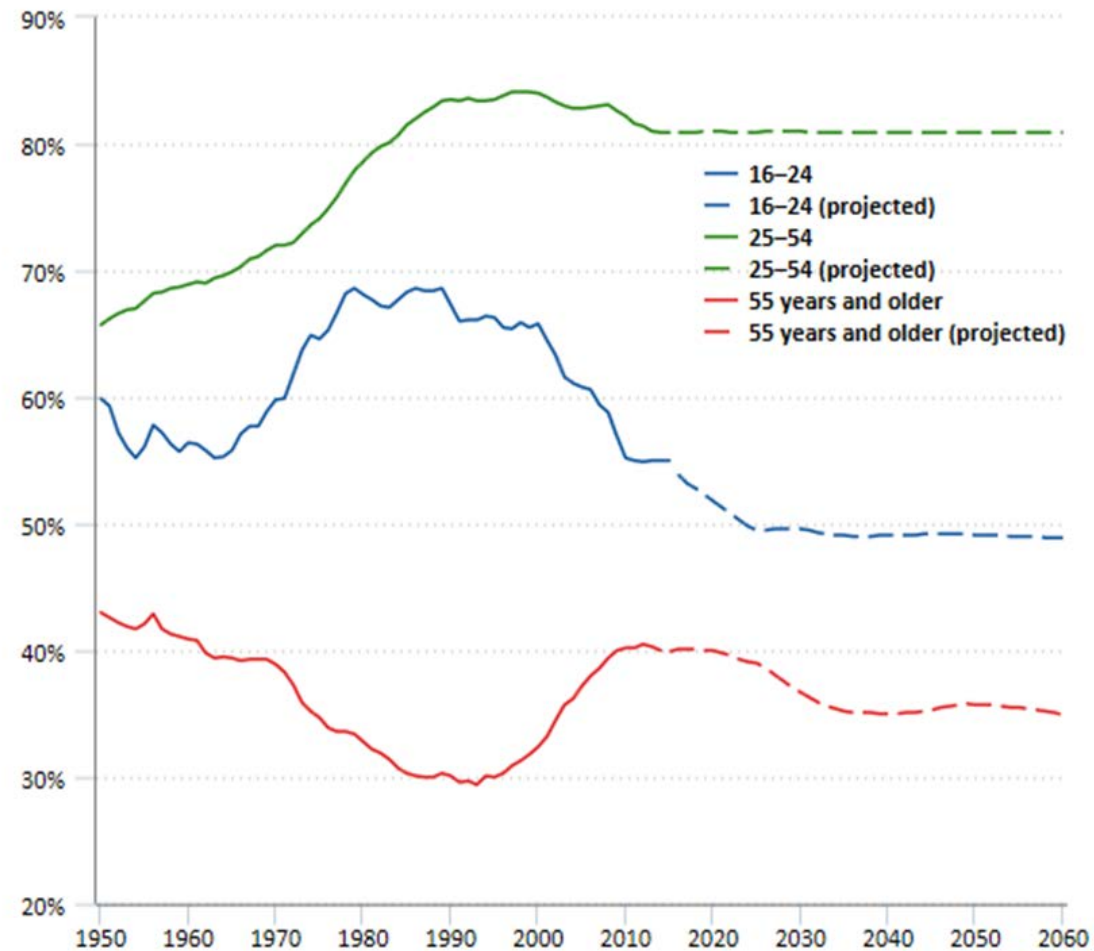


Click legend items to change data display. Hover over chart to view data.
Source: U.S. Bureau of Labor Statistics



THE GENERAL TREND: AGE

Labor force participation rates of all age groups are projected to decline



Click legend items to change data display. Hover over chart to view data.
Source: U.S. Bureau of Labor Statistics

UNEMPLOYMENT BY COUNTY

County	Unemployment Rate
Chittenden	2.1%
Windsor	2.3%
Franklin	2.5%
Washington	2.6%
Addison	2.6%
Vermont	2.7%
Orange	2.7%
Windham	2.9%
Rutland	3.1%
Bennington	3.1%
Grand Isle	3.2%
Caledonia	3.3%
Lamoille	3.5%
Essex	3.6%
Orleans	4.4%

Unemployment rate is the percent of the labor force 16 years and older that is not currently working and is actively seeking work (labor force does not include people who are not working and not seeking work)

Source: Vermont Economic & Labor Market Information Local Area Unemployment Statistics (2018 annual averages)

LABOR FORCE BY COUNTY (2000 - 2018)

	Addison	Bennington	Caledonia	Chittenden	Essex	Franklin	Grand Isle	Lamoille	Orange	Orleans	Rutland	Washington	Windham	Windsor
2018	20,782	18,308	14,770	96,716	2,698	27,610	4,054	14,071	15,980	13,612	31,142	34,497	22,643	29,178
2017	20,793	18,293	14,716	96,879	2,698	27,665	4,065	14,093	15,952	13,620	31,136	34,298	22,849	29,079
2016	20,858	18,451	14,907	95,242	2,701	27,364	3,977	13,926	15,902	13,541	31,467	33,910	23,225	29,337
2015	20,688	18,570	15,077	94,808	2,756	27,290	3,935	13,773	15,890	13,589	31,264	34,050	23,449	29,458
2014	20,815	18,669	15,271	95,549	2,769	27,466	4,067	13,753	15,891	13,614	31,762	34,253	23,511	29,695
2013	20,786	19,275	15,757	95,084	2,841	27,490	4,054	13,883	16,176	13,824	32,280	34,583	24,092	30,322
2012	20,868	19,663	16,137	95,835	2,933	27,854	4,132	14,041	16,450	14,120	32,799	34,630	24,668	30,725
2011	21,098	19,961	16,597	95,502	3,059	27,902	4,167	14,552	16,597	14,169	33,287	34,863	24,980	31,373
2010	21,241	20,339	16,785	94,581	3,171	27,686	4,134	14,496	16,725	14,213	33,590	35,117	25,435	31,889
2009	21,909	20,622	16,778	90,375	3,318	26,617	4,262	15,694	16,638	14,587	35,660	34,838	25,259	33,304
2008	21,667	20,536	16,816	88,974	3,260	25,996	4,271	15,140	16,312	14,244	35,725	34,349	24,819	32,782
2007	21,557	20,477	16,729	88,330	3,264	25,965	4,197	15,112	16,481	14,364	35,702	34,153	24,701	32,699
2006	21,898	20,675	16,945	88,480	3,290	26,432	4,326	15,152	16,673	14,568	36,110	34,540	24,887	33,021
2005	21,560	20,089	16,451	87,236	3,222	25,936	4,248	14,587	16,158	14,087	35,775	34,179	24,992	32,241
2004	20,997	19,774	16,381	87,043	3,242	25,732	4,187	14,320	16,162	13,973	35,108	33,898	24,720	32,134
2003	21,036	19,951	16,280	86,525	3,244	25,470	4,116	14,012	16,271	13,828	34,671	33,896	24,702	31,968
2002	20,757	20,168	15,954	86,110	3,286	25,102	3,985	13,810	16,134	13,567	34,535	33,464	24,705	31,546
2001	20,427	20,013	15,633	85,086	3,251	24,676	3,858	13,427	15,686	13,279	33,952	32,640	24,073	31,052
2000	19,571	19,677	15,289	84,114	3,224	24,212	3,737	13,188	15,339	12,781	33,166	32,417	24,074	30,600
LSP	-1,127	-2,367	-2,175	-163	-620	-292	-272	-1,623	-745	-975	-4,968	-620	-2,792	-4,126

■ = Peak Labor Force

Source: Vermont Economic & Labor Market Information

EMPLOYED PERSONS BY COUNTY (2000 - 2018)

	Addison	Bennington	Caledonia	Chittenden	Essex	Franklin	Grand Isle	Lamoille	Orange	Orleans	Rutland	Washington	Windham	Windsor
2018	20,248	17,732	14,289	94,732	2,600	26,913	3,925	13,576	15,554	13,008	30,167	33,601	21,997	28,496
2017	20,214	17,635	14,177	94,715	2,575	26,832	3,925	13,537	15,467	12,931	30,056	33,300	22,150	28,341
2016	20,238	17,756	14,285	92,859	2,566	26,513	3,828	13,334	15,407	12,829	30,278	32,827	22,451	28,475
2015	19,973	17,791	14,377	92,270	2,597	26,320	3,778	13,136	15,346	12,834	29,939	32,865	22,615	28,514
2014	20,045	17,815	14,537	92,639	2,606	26,386	3,886	13,049	15,285	12,770	30,269	32,933	22,555	28,606
2013	19,928	18,271	14,921	91,824	2,649	26,340	3,872	13,094	15,512	12,881	30,562	33,092	22,966	29,054
2012	19,926	18,506	15,130	92,217	2,697	26,607	3,909	13,148	15,676	13,028	30,755	32,998	23,393	29,295
2011	20,057	18,687	15,551	91,483	2,803	26,462	3,901	13,541	15,711	12,973	31,025	33,028	23,580	29,660
2010	20,005	18,932	15,649	90,040	2,855	26,107	3,848	13,392	15,743	12,948	31,105	33,049	23,873	29,942
2009	20,568	19,046	15,476	85,311	3,022	24,876	3,931	14,507	15,605	13,250	32,831	32,645	23,672	31,379
2008	20,706	19,549	15,943	85,422	3,059	24,715	4,012	14,315	15,591	13,256	33,764	32,724	23,689	31,539
2007	20,726	19,650	15,982	85,355	3,092	24,842	3,968	14,395	15,866	13,489	34,142	32,760	23,696	31,596
2006	21,176	19,925	16,249	85,605	3,161	25,334	4,101	14,524	16,115	13,788	34,684	33,218	23,953	32,032
2005	20,856	19,361	15,817	84,544	3,101	24,955	4,035	14,019	15,634	13,374	34,466	32,960	24,153	31,280
2004	20,267	18,989	15,690	84,276	3,112	24,696	3,990	13,732	15,611	13,260	33,692	32,617	23,860	31,103
2003	20,216	19,003	15,458	83,243	3,085	24,269	3,888	13,339	15,647	12,973	33,053	32,413	23,749	30,783
2002	20,015	19,227	15,165	83,091	3,105	24,042	3,790	13,230	15,531	12,739	33,128	32,054	23,874	30,437
2001	19,800	19,252	15,014	82,694	3,112	23,784	3,699	12,947	15,243	12,594	32,758	31,547	23,301	30,141
2000	19,057	19,096	14,776	82,190	3,095	23,494	3,591	12,767	14,964	12,219	32,119	31,536	23,394	29,831
LSP	-928	-2,193	-1,960	0	-561	0	-176	-948	-561	-780	-4,517	0	-2,156	-3,536

■ = Peak Employment

Source: Vermont Economic & Labor Market Information Local Area Unemployment Statistics

STATEWIDE EDUCATION ENROLLMENT

Academic Year	PK-12	K-12
2018-2019	83,710	75,116
2017-2018	84,404	75,589
2016-2017	84,433	76,318
2015-2016	84,446	77,145
2014-2015	84,546	78,333
2013-2014	85,359	79,542
2012-2013	86,119	80,444
2011-2012	86,784	81,268
2010-2011	87,750	82,555
2009-2010	88,589	83,760
2008-2009	89,776	85,081
2007-2008	91,458	86,878
2006-2007	92,716	88,398
2005-2006	93,925	89,877
2004-2005	93,813	90,235
2003-2004	95,526	92,132

Source: Vermont Agency of Education

EDUCATION ENROLLMENT BY COUNTY

(2003/04 – 2018/19)

PK - 12	Addison	Bennington	Caledonia	Chittenden	Essex	Franklin	Grand Isle	Lamoille	Orange	Orleans	Rutland	Washington	Windham	Windsor
2018-19	4,545	4,249	3,105	22,324	559	8,329	601	3,690	3,852	3,920	7,617	8,216	5,470	7,032
2003-04	5,738	4,916	3,606	23,458	910	7,958	806	3,878	4,570	4,544	9,818	9,538	6,562	8,895
Change	-1,193	-667	-501	-1,134	-351	371	-205	-188	-718	-624	-2,201	-1,322	-1,092	-1,863
% Change	-20.79%	-13.57%	13.89%	-4.83%	-38.57	4.66%	-25.43%	-4.85%	-15.71%	-13.73%	-22.42%	-13.86%	-16.64%	-20.94%
K-12	Addison	Bennington	Caledonia	Chittenden	Essex	Franklin	Grand Isle	Lamoille	Orange	Orleans	Rutland	Washington	Windham	Windsor
2018-19	4,101	3,745	2,733	19,942	506	7,443	551	3,330	3,480	3549	6,889	7,347	4,868	6,431
2003-04	5,624	4,811	3,337	22,729	851	7,642	731	3,746	4,435	4,326	9,403	9,148	6341	8,689
Change	-1,523	-1,066	-604	2,787	-345	-199	-180	-416	-955	-777	-2,514	-1,801	-1,473	-2,258
% Change	-27.08%	-22.16%	-18.10%	-12.26%	-40.54%	-2.60%	-24.62%	-11.11%	-21.53%	-17.96%	-26.74%	-19.69%	-23.23%	-25.99%

Source: Vermont Agency of Education

K-12 ENROLLMENT BY COUNTY

PERCENT CHANGE SINCE 2003/04

County	Percent Change
Essex	-40.54%
Addison	-27.08%
Rutland	-26.74%
Windsor	-25.99%
Grand Isle	-24.62%
Windham	-23.23%
Bennington	-22.16%
Orange	-21.53%
Washington	-19.69%
Orleans	-17.96%
Caledonia	-18.10%
Chittenden	-12.26%
Lamoille	-11.11%
Franklin	-2.60%

HIGH SCHOOL GRADUATION BY COUNTY

County	High School Graduates
Essex	85.8%
Orleans	87.6%
Franklin	90.8%
Caledonia	90.9%
Orange	91.8%
Bennington	91.9%
Rutland	92.3%
Lamoille	92.6%
Vermont	92.6%
Addison	92.9%
Windsor	93.2%
Windham	93.4%
Washington	93.4%
Chittenden	94.1%
Grand Isle	94.3%

Percent of the population
25 years and older that
has graduated from high
school (including
equivalents such as GED)

Source: 2014-2018 American Communities Survey (5-year estimates)

HIGHER EDUCATION ATTAINMENT BY COUNTY

County	Bachelor's Degree or Higher
Essex	15.6%
Orleans	21.6%
Franklin	23.7%
Caledonia	28.1%
Orange	29.1%
Rutland	30.3%
Bennington	35.7%
Windsor	36.3%
Addison	36.7%
Vermont	37.3%
Lamoille	37.3%
Windham	38.6%
Grand Isle	39.2%
Washington	41.5%
Chittenden	50.7%

Percent of the
population 25 years and
older with a bachelor's
degree or higher

Source: 2014-2018 American Communities Survey (5-year estimates)

GROSS DOMESTIC PRODUCT BY COUNTY

County	GDP
Essex	\$153,000
Grand Isle	\$173,785
Orange	\$844,280
Orleans	\$1,078,806
Caledonia	\$1,157,675
Lamoille	\$1,263,039
Addison	\$1,649,080
Bennington	\$1,716,444
Franklin	\$1,909,422
Windham	\$2,484,152
Windsor	\$2,644,860
Rutland	\$2,786,045
Washington	\$3,825,047
Chittenden	\$11,570,630
Vermont	\$33,256,268

Gross domestic product
(GDP) in thousands of
dollars (all industries total)

MEDIAN HOUSEHOLD INCOME BY COUNTY

County	Median Household Income
Essex	\$41,045
Orleans	\$47,915
Caledonia	\$49,348
Windham	\$52,659
Bennington	\$53,040
Rutland	\$54,973
Windsor	\$58,303
Vermont	\$60,076
Orange	\$60,159
Lamoille	\$60,365
Washington	\$62,108
Franklin	\$64,258
Addison	\$65,093
Grand Isle	\$69,583
Chittenden	\$69,896

Median annual income
of households

Source: 2014-2018 American Communities Survey (5-year estimates)

AVERAGE ANNUAL WAGE BY COUNTY

County	Average Wage
Grand Isle	\$35,739
Essex	\$37,312
Orleans	\$37,613
Lamoille	\$40,161
Orange	\$40,676
Caledonia	\$40,970
Windham	\$42,094
Bennington	\$42,969
Rutland	\$44,167
Windsor	\$45,794
Franklin	\$47,574
Vermont	\$47,639
Addison	\$48,013
Washington	\$50,971
Chittenden	\$54,048

Average annual
industry wage for all
employment covered
by unemployment
benefits

Source: Vermont Economic & Labor Market Information Quarterly
Census of Employment and Wages (2018 annual averages)

POVERTY BY COUNTY

County	Percent Below Poverty Level
Grand Isle	7.6%
Franklin	7.7%
Addison	7.7%
Windsor	10.0%
Rutland	10.7%
Orange	10.8%
Vermont	11.2%
Bennington	11.3%
Washington	11.4%
Chittenden	11.8%
Caledonia	12.3%
Windham	13.4%
Orleans	14.0%
Lamoille	14.5%
Essex	14.6%

Percent of the
population with
incomes below the
poverty level

Source: 2014-2018 American Communities Survey (5-year estimates)

SNAP RECIPIENTS BY COUNTY

County	SNAP Recipients
Grand Isle	7.7%
Chittenden	9.4%
Addison	10.1%
Rutland	11.3%
Windsor	11.6%
Washington	11.9%
Orange	11.9%
Vermont	12.0%
Lamoille	12.7%
Franklin	13.2%
Bennington	14.6%
Caledonia	15.3%
Orleans	15.7%
Windham	15.8%
Essex	16.2%

Percent of households receiving Supplemental Nutrition Assistance Program (SNAP) benefits

Source: 2014-2018 American Communities Survey (5-year estimates)

RENTERS BY COUNTY

County	Renters
Grand Isle	17.6%
Orange	19.1%
Essex	19.8%
Orleans	23.0%
Franklin	25.5%
Addison	25.9%
Bennington	26.7%
Windsor	26.8%
Lamoille	27.5%
Rutland	27.5%
Caledonia	27.8%
Washington	29.2%
Vermont	29.3%
Windham	32.2%
Chittenden	37.0%

Percent of occupied housing units that are rented rather than occupied by the owner

Source: 2014-2018 American Communities Survey (5-year estimates)

HOMEOWNERS BY COUNTY

County	Homeowners
Chittenden	63.0%
Windham	67.8%
Vermont	70.7%
Washington	70.8%
Caledonia	72.2%
Rutland	72.5%
Lamoille	72.5%
Windsor	73.2%
Bennington	73.3%
Addison	74.1%
Franklin	74.5%
Orleans	77.0%
Essex	80.2%
Orange	80.9%
Grand Isle	82.4%

Percent of occupied housing units that are occupied by the owner (not rented)

Source: 2014-2018 American Communities Survey (5-year estimates)

HOME PRICE BY COUNTY

County	Home Price
Essex	\$112,000
Caledonia	\$149,000
Rutland	\$150,000
Orleans	\$152,450
Orange	\$179,000
Windsor	\$181,500
Windham	\$188,500
Bennington	\$195,123
Washington	\$200,515
Franklin	\$204,000
Vermont	\$215,000
Lamoille	\$215,000
Grand Isle	\$225,000
Addison	\$240,000
Chittenden	\$304,000

Median price of home sales
(primary homes only, does
not include second homes)

Source: Vermont Housing Finance Agency (2018 estimates)