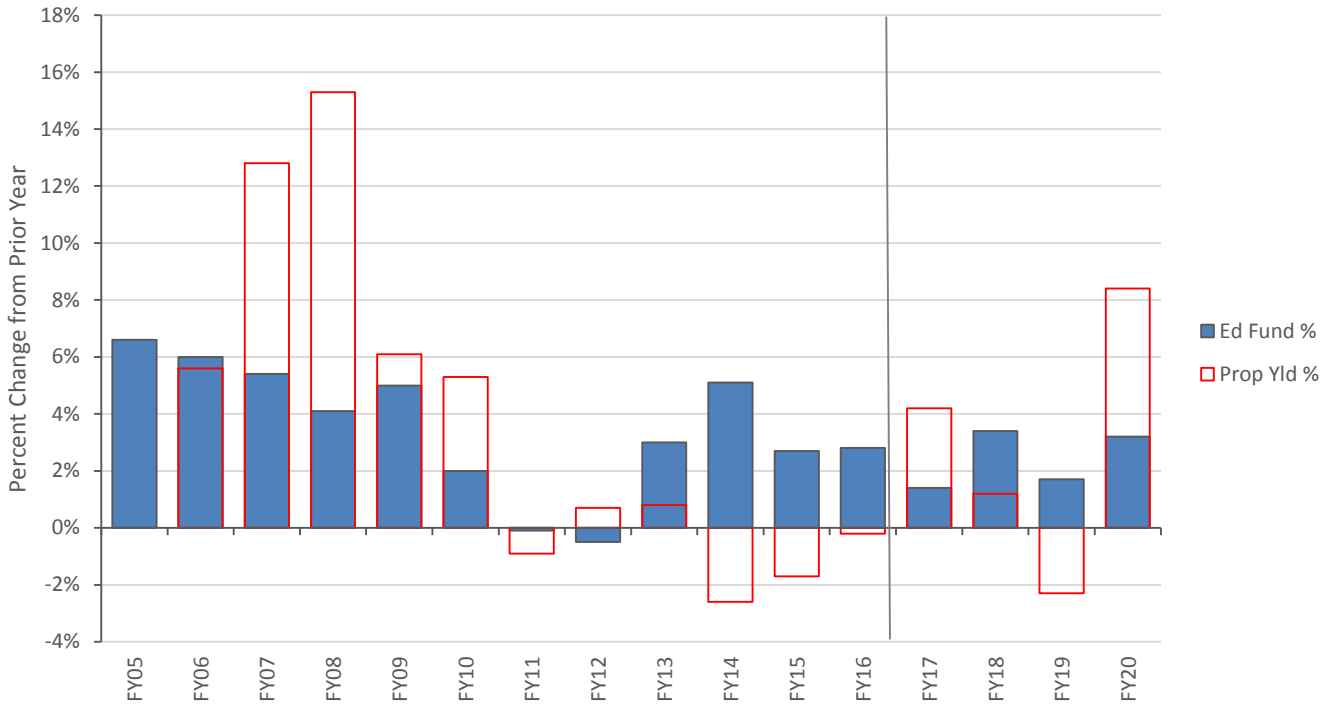


Percentage Change of Education Fund and Property Yields as Recommended in the December 1 Tax Commissioner Letter



	Ed Spending	% change	(Eff) Yld	Prop Yld %	
FY2005	908,604,879	6.6%	6,476		
FY2006	962,976,995	6.0%	6,838	5.6%	Act 68
FY2007	1,015,048,578	5.4%	7,715	12.8%	
FY2008	1,056,563,162	4.1%	8,892	15.3%	
FY2009	1,109,754,777	5.0%	9,437	6.1%	
FY2010	1,132,474,781	2.0%	9,935	5.3%	
FY2011	1,130,803,523	-0.1%	9,841	-0.9%	
FY2012	1,125,189,915	-0.5%	9,906	0.7%	
FY2013	1,158,735,333	3.0%	9,990	0.8%	
FY2014	1,217,808,313	5.1%	9,735	-2.6%	Act 130 and on
FY2015	1,250,342,064	2.7%	9,573	-1.7%	
FY2016	1,285,834,776	2.8%	9,555	-0.2%	
FY2017	1,304,289,466	1.4%	9,955	4.2%	Property Yields
FY2018	1,348,459,844	3.4%	10,076	1.2%	
FY2019	1,371,380,462	1.7%	9,842	-2.3%	
FY20 proj	1,415,865,471	3.2%	10,666	8.4%	

Effective property yields were calculated by dividing the base education amount by the base homestead rate.