

VTrans Highway Division

Maintenance Bureau Overview

Presented on: January 17, 2019

Presented by:

Todd C. Law, PE

Director, Maintenance Bureau

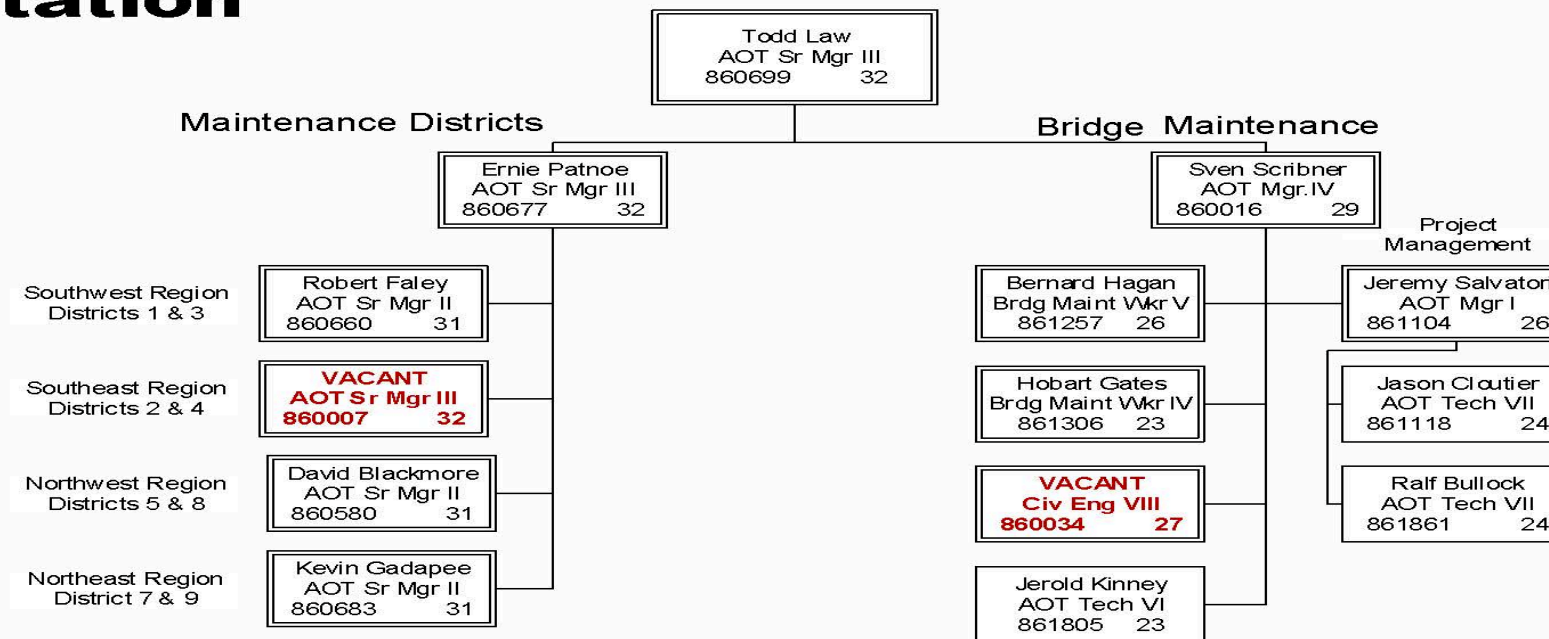
Who are we?



Agency of Transportation

Highway Division

Maintenance Bureau

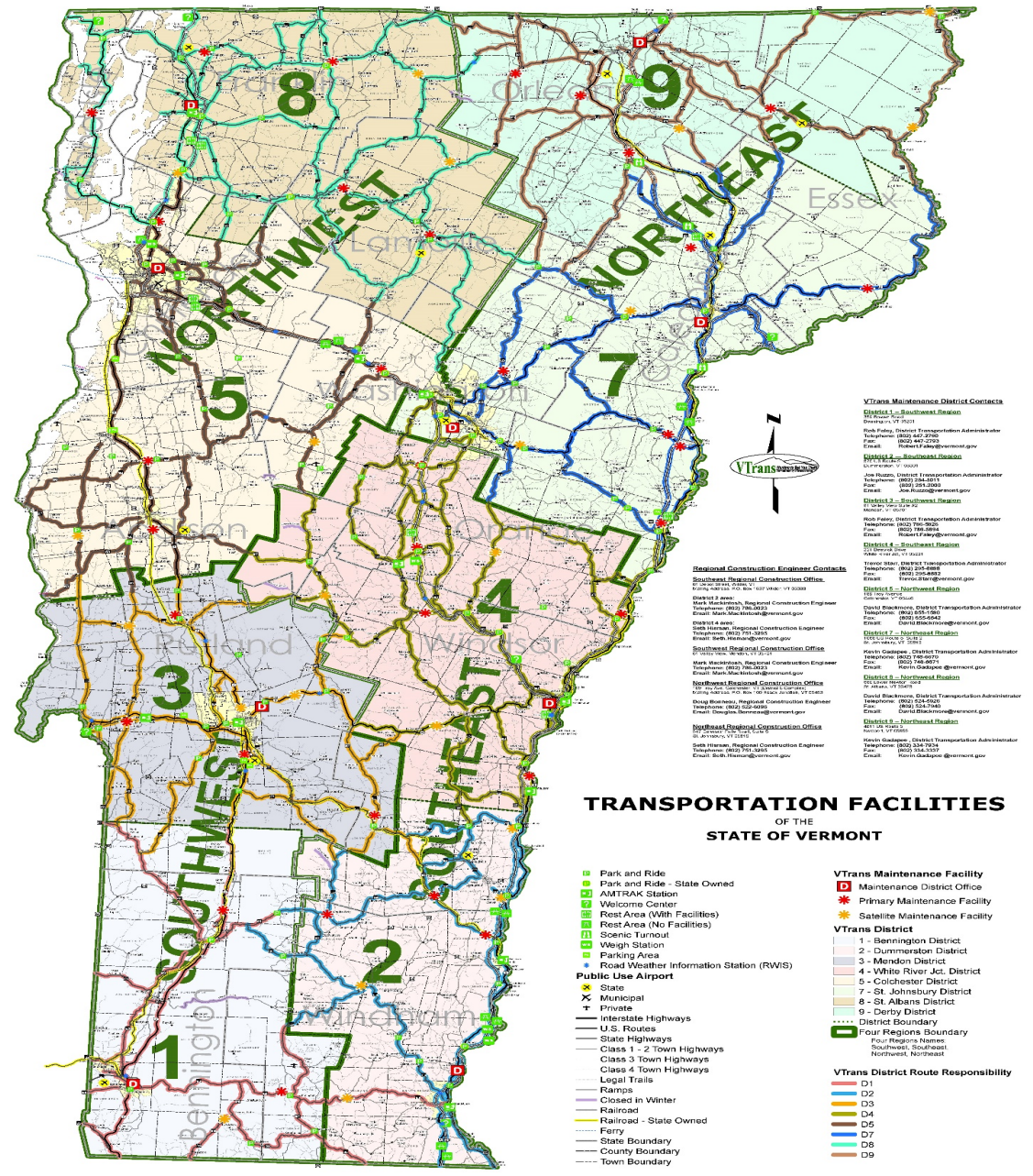


MAINTENANCE BUREAU

- ***Mission Statement:***
- ***VTrans Maintenance Bureau will work together to get you there on a safe, reliable infrastructure, through hard work and dedication.***



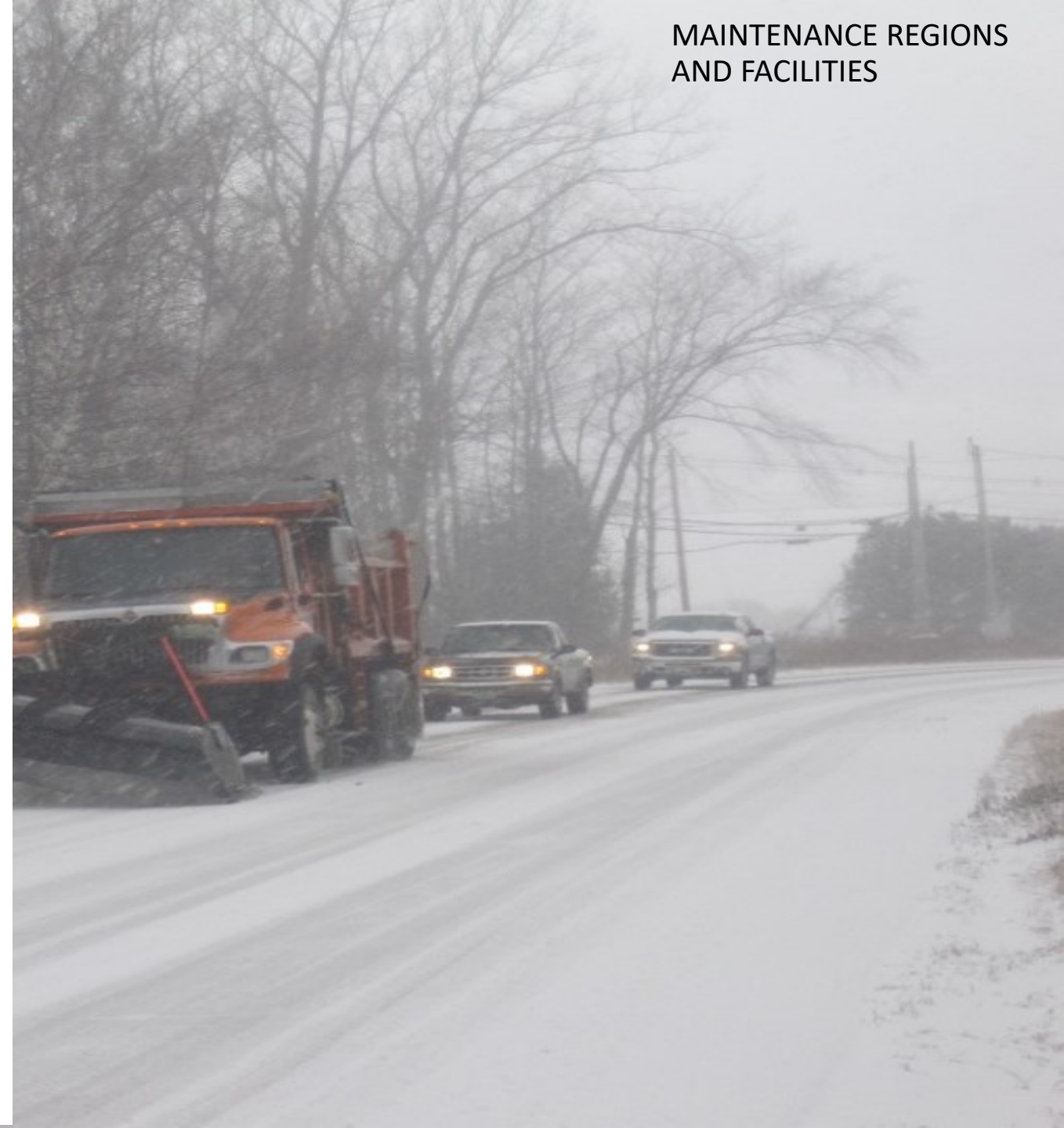
MAINTENANCE REGIONS AND FACILITIES



- VTrans Maintenance District Contacts**
- District 1 - Southwest Region**
 District Manager: VT 02021
 Heidi Baker, District Transportation Administrator
 Telephone: (802) 447-2700
 Email: Heidi.Baker@vermont.gov
- District 2 - Southwest Region**
 District Manager: VT 02021
 Heidi Baker, District Transportation Administrator
 Telephone: (802) 264-4343
 Email: Heidi.Baker@vermont.gov
- District 3 - Southwest Region**
 District Manager: VT 02021
 Heidi Baker, District Transportation Administrator
 Telephone: (802) 746-2625
 Email: Heidi.Baker@vermont.gov
- District 4 - Southwest Region**
 District Manager: VT 02021
 Heidi Baker, District Transportation Administrator
 Telephone: (802) 264-4343
 Email: Heidi.Baker@vermont.gov
- District 5 - Northwest Region**
 District Manager: VT 02021
 Heidi Baker, District Transportation Administrator
 Telephone: (802) 264-4343
 Email: Heidi.Baker@vermont.gov
- District 6 - Northwest Region**
 District Manager: VT 02021
 Heidi Baker, District Transportation Administrator
 Telephone: (802) 264-4343
 Email: Heidi.Baker@vermont.gov
- District 7 - Northwest Region**
 District Manager: VT 02021
 Heidi Baker, District Transportation Administrator
 Telephone: (802) 264-4343
 Email: Heidi.Baker@vermont.gov
- District 8 - Northwest Region**
 District Manager: VT 02021
 Heidi Baker, District Transportation Administrator
 Telephone: (802) 264-4343
 Email: Heidi.Baker@vermont.gov
- District 9 - Northwest Region**
 District Manager: VT 02021
 Heidi Baker, District Transportation Administrator
 Telephone: (802) 264-4343
 Email: Heidi.Baker@vermont.gov

TRANSPORTATION FACILITIES OF THE STATE OF VERMONT

- Legend:**
- Park and Ride
 - Park and Ride - State Owned
 - AMTRAK Station
 - Welcome Center
 - Rest Area (With Facilities)
 - Rest Area (No Facilities)
 - Scenic Turnout
 - Weigh Station
 - Parking Area
 - Road Weather Information Station (RWIS)
- Public Use Airport**
- State
 - Municipal
 - Private
- Highways**
- Interstate Highways
 - U.S. Routes
 - State Highways
 - Class 1 - 2 Town Highways
 - Class 3 Town Highways
 - Class 4 Town Highways
 - Legal Trails
 - Ramps
 - Closed in Winter
 - Railroad
 - Railroad - State Owned
 - Ferry
 - State Boundary
 - County Boundary
 - Town Boundary
- VTrans Maintenance Facility**
- Maintenance District Office
 - Primary Maintenance Facility
 - Satellite Maintenance Facility
- VTrans District**
- 1 - Bennington District
 - 2 - Dummerston District
 - 3 - Mendon District
 - 4 - White River Act. District
 - 5 - Colchester District
 - 7 - St. Johnsbury District
 - 8 - St. Albans District
 - 9 - Derby District
- District Boundary**
- Four Regions Boundary
 - Four Regions Names: Southwest, Southeast, Northwest, Northeast
- VTrans District Route Responsibility**
- D1
 - D2
 - D3
 - D4
 - D5
 - D7
 - D8
 - D9



What do we do?

- SOME OF THE SIGNIFICANT ACTIVITIES WE PERFORM:
 - WINTER MAINTENANCE
 - PICKING LITTER
 - SWEEPING
 - MOWING
 - POTHOLE PATCHING
 - BRIDGE WASHING, REPAIRS AND PROJECTS
 - GUARDRAIL REPAIRS
 - CULVERT REPAIRS AND REHABILITATION
 - MINOR EQUIPMENT REPAIRS
 - CULVERT MAINTENANCE, REPAIR AND REHABILITATION



MAINTENANCE DISTRICT LABOR AND EQUIPMENT NUMBERS



- Maintenance
- 445 Employees
- 274 Dump Trucks with Plows and Wings
 - 72 Pickups with Plows
- 374 Licensed CDL Drivers
 - 64 Garages

Bridge Maintenance Program

- **The state of Vermont has 2351 bridges (structures larger than 6 feet)**
- **33 Bridge Inspection Findings were issued in 2016**
- **32 Bridge Inspection Findings were issued in 2017**
- **38 Bridge Inspection Findings were issued in 2018**

Temporary Bridge

- The Agency uses both the Acrow 700XS Modular Bridging System and Mabey Compact 200 Bridge System.
- These systems are not interchangeable so they are housed in different locations. Acrow inventory is located at the District Garages in Springfield and Dorset. Mabey inventory is located at the District Garage in Middlesex.
- Currently there are 12 temporary bridges in service totaling 1060 lineal feet. Many of those have been in service for five or more years and will require repair or replacement of parts.

Sheldon VT105 BR10

Description of Work: Full removal of existing paint system, primed and greased all beams

Contractor: Catamount

Contact Amount: \$218,859.00 to date



Before



During

Bridge Maintenance Projects

Calendar Year	Number of Projects	State Programs*	Federal Programs**	Total
2016	32	\$977,129.30	\$6,559,522.00	\$7,536,651.30
2017	18	\$1,456,472.15	\$829,532.31	\$2,286,004.46
2018	20	\$1,869,945.40	\$1,933,21.60	\$3,803,221.60

Ferrisburgh BM19502

Description of Work: Installed culvert liner with new headwall at inlet and cradlewall at outlet

Contractor: Engineers Construction, Inc.

Contact Amount: \$294,852.00



Inlet Before



Outlet Before



Inlet After



Outlet After



Castleton VT915 BR2

Description of Work: Contractor replaced bearing pedestals at Pier #3, concrete repairs of pier caps at piers #2 and #3. Bridge Crew greased bearings at Pier #3.

Contractor: Cold River Bridges

Contact Amount: \$83,986

BIF Issued: June 15, 2017

Project Completed: November 30, 2017



Pier #2 - After



Pier #3- After



Pier #2 - Before



Pier #3 - Before



Groton US302 BR30

Description of Work: Wing wall reconstruction, concrete repairs and slope stability

Contractor: RC Contractors

Contact Amount: \$132,000.00



Before



After

